

# Hard Copy Proofing Sample

This tutorial addresses all :APOGEE Prepress features related to hard copy proofing. The exercises concern all types of proof creation features, from high quality contract proofs with certification validation on Agfa proofers to content proofs on a third-party proofer.

**Duration:** You will need 1 whole day to complete the lessons in this Advanced Tutorial.

▶ Advanced Tutorial Objectives .....	2
▶ Before You Begin .....	3
▶ Arranging Windows to Monitor Jobs in Progress .....	5
▶ Contact Us .....	6
▶ Lesson 1: Working with Pages .....	7
▶ Lesson 2: Certified Proofing .....	16
▶ Lesson 3: Working with Flats (Imposition Proofing) .....	61
▶ Lesson 4: Remote Proofing .....	84
▶ Lesson 5: GDI Proofing .....	103
▶ Lesson 6: SherpaDot (Dot for Dot) .....	117
▶ Lesson 7: Digital Film Proof Options .....	148



**This tutorial is only a preview of the full advanced tutorial.**

If you would like to obtain the full version of this tutorial or a training on this subject, please contact your local Agfa sales or service representative.

Worldwide addresses of our local Agfa representatives can be found on our Agfa Graphics website:

[http://www.agfagraphics.com/global/en/mainings/about\\_us/worldwide/index.jsp](http://www.agfagraphics.com/global/en/mainings/about_us/worldwide/index.jsp)

More tutorials are available on [www.apogee.agfa.net](http://www.apogee.agfa.net)

# Advanced Tutorial Objectives

In this Advanced Tutorial you will learn about:

- Proofing with sheets, rolls, ganging
- Certified proofing (or contract proofing)
  - QMS: calibration and characterization with Closed Loop Profile Optimization
  - Certified Proofing Toolkit
  - Epson X900 with automatic report generation
- Imposition proofing
  - Working with flats
  - Create double-sided proofs
  - Create proofs from digital film
  - QuickProof
- Remote Proofing
- GDI Proofing: driving third-party proofers
- SherpaDot: create screened proofs with true dot-for-dot
- Additional Digital Film Proof feature: digital overlay and speed or quality improvement

## Before You Begin

Before you start the lessons in this Advanced Tutorial, make sure that you are logged on to the :APOGEE Prepress System with Administrator access level.

Most of the exercises in this tutorial are written for the Epson 7880 proofer, although others will be mentioned. Feel free to replace this proofer by another as long as it can match the desired quality.

You will also need the following sample files and tickets which are bundled together with this Advanced Tutorial PDF file (or are already available in the ...\\SupportFiles\\SampleFiles folder):

- Sample PDF files
  - PDF\_colormangement.pdf
  - altona\_visual)1v2a\_x3.pdf
  - Bruges.pdf
- PJTF files
  - A4 Tutorial PB 4Pages WT.pjtf
  - A4 Tutorial PB 2x8Pages SW.pjtf
- Folders with PDF files
  - 2up Perfecting folder
  - 2up Sheetwise folder
  - 2up Work&Tumble folder
  - 2up Work&Turn folder
- Certification Strips
  - DTP70 ISO Strip Generic.pdf
  - DTP ISO Strip Generic.pdf
  - EyeOne ISO Strip Generic.pdf
  - EyeOneIO ISO Strip Generic.pdf

- iSis ISO Strip Generic.pdf
- SpectroScan ISO Strip Generic.pdf
- Tickets
  - studentname-hardcopyproof-0001.ajt
  - studentname-hardcopyproof-0002.ajt
  - studentname-hardcopyproof-0003.aht
  - studentname-hardcopyproof-0004-Epson7900.aht
  - studentname-hardcopyproof-0004-Epson9900.aht
  - studentname-hardcopyproof-0005.ajt
  - studentname-hardcopyproof-0006.aht
  - studentname-hardcopyproof-0007.aht
  - studentname-hardcopyproof-0008.ajt
  - studentname-hardcopyproof-0009.aht
  - studentname-hardcopyproof-0010.aht
  - studentname-hardcopyproof-0011.aht
  - studentname-hardcopyproof-0012.aht
  - studentname-hardcopyproof-0013.aht
  - studentname-hardcopyproof-0014aht

These files are provided in a single ZIP file, which is available for downloading from the Graphics Portal - Services Library website.

---

**NOTE:** You will need to copy the sample PJTF files to the following folder located on the :APOGEE Prepress System:

```
..\<Servername>\SupportFiles\SampleFiles\PJTF files
```

---

---

**NOTE:** While working through the lessons in this Advanced Tutorial, do not forget to replace **studentname** with your own name in the Administration tab.

---

## Arranging Windows to Monitor Jobs in Progress

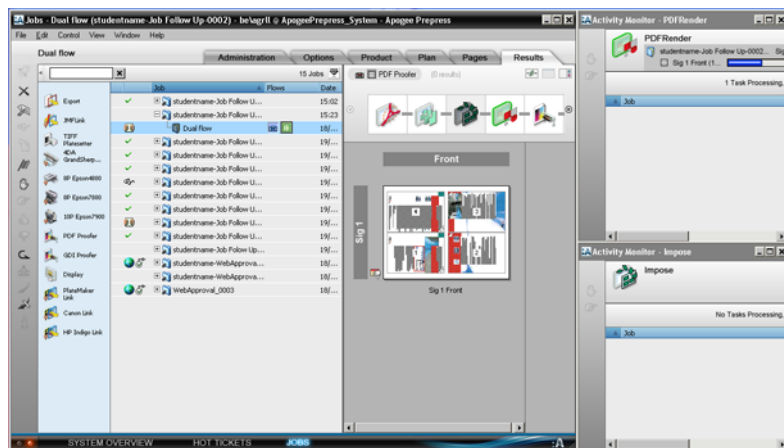
In this tutorial, you will generally proceed as follows:

- 1 Create and edit jobs and/or tickets.
- 2 Submit the changes.
- 3 Monitor how jobs are processed.

Sometimes, however, jobs will be processed so fast that you hardly have the time to open and resize the necessary windows to monitor the processing. Therefore, you may want to prepare the :APOGEE Prepress user interface in advance, so that you can easily monitor jobs in progress.

### ▷ To arrange windows to monitor jobs in progress

- 1 Go to the **System Overview**.
- 2 Double-click one or more Task Processors to open the respective **Activity Monitors**.
- 3 Resize the **Activity Monitors** and arrange them next to the **Jobs** window so that you can monitor all jobs and processes at a glance.



- 4 Observe the following when jobs are being processed:
  - In the **Results** pane, you will see a preview and the status of the pages and flats.
  - In the **Activity Monitors**, you will see tasks which are in progress and tasks which are waiting at the respective Task Processor.

## Contact Us

Agfa welcomes your suggestions, questions or comments about this documentation. You can send e-mail feedback to: [Apogee@agfa.com](mailto:Apogee@agfa.com)

## LESSON 1: Working with Pages (Fully included)

A *page proof* allows you to check the content and color reproduction of specific pages. Color proofs should closely match the expected press print output. Each page is printed separately.

In this lesson you will learn how pages can be processed in :APOGEE Prepress. Certain proofers can print on sheet media, while ganging can be used in combination with roll media to reduce media waste.

### Using Sheet Media on Proofers

In this lesson you will learn how to handle the tray functionality for proofers. Trays improve the ease-of-use of sheet media on certain proofers.

The tray is described in the data created by :APOGEE Prepress and transferred to the proofer. The proofer uses the selected tray or generates a warning to load another tray before continuing the task (proofers cannot change trays automatically).

:APOGEE Prepress Proofer Task Processors may have one, two or three media trays depending on the type of proofer. These trays are:

- Automatic tray: The proofer will use the loaded sheets from the front tray (only available on the Epson table models 4000, 4400, 4800 and 4880, and only for sheet media).
- Manual sheet: The proofer will use a manually loaded media size. This tray can only be used for sheet media. Consult the setup guide of your proofer on how to load cut sheet media.
- Roll media: The proofer will use the roll-loaded media.

**TIP:** GDI driven third-party proofers may also have multiple trays including an automatic tray. The tray selection for these proofers is not performed in :APOGEE Prepress but in the proofer spooler/driver for these proofers.

Proofers with only one tray do not have a specific tray name. There is no limitation to loaded sheet or roll media. However, remember to switch off auto cut after each job when you load or use sheet media on auto-cut proofers, otherwise the proofer will cut through the sheet when the proofer finishes printing.

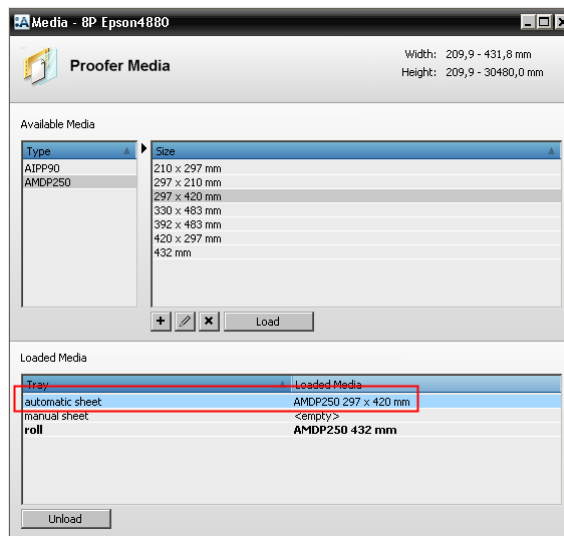
Three tray engines:	Two tray engines:
<ul style="list-style-type: none"> <li>• 8P Epson 4880</li> <li>• 8P Epson 4800</li> <li>• 7P Epson 4000</li> <li>• 4P Epson 4400</li> </ul>	<ul style="list-style-type: none"> <li>• 6D Sherpa 24m/44m</li> <li>• 7P Sherpa 24m/44m</li> <li>• 8P Epson 7800/9800</li> <li>• 8P Epson 7880/9880/11880</li> <li>• 10P Epson 7900/9900</li> <li>• 10P HP Z3100/Z3200</li> <li>• 4P Epson 7400/9400</li> </ul>

In this lesson, you will learn how to use the Automatic Tray of an Epson 4880. You will proof an A3-size document with Joblog Strip and page rule-ups on a A3-sized media.

**NOTE:** Be sure to put A3-sized AMDP media inside the automatic sheet media cassette of the Epson 4880.

▷ **To load media for the Epson 4880**

- 1 In the **System Overview** window click the **Epson 4880**.
- 2 Double-click the **Media** Resource.
- 3 In the Available Media pane, select the **AMDP250** as Type, and **297 x 420 mm** as size.
- 4 In the Loaded Media pane click **automatic sheet**.
- 5 Click **Load**.



- 6 Close the Media window.

▷ **To create a parameter set for your proofer**

- 1 In the **System Overview** window select your proofer.
- 2 Double-click the **Parameter Sets** Resource.
- 3 In the Parameter Sets window click the **Image** Operation.
- 4 Click **New**.



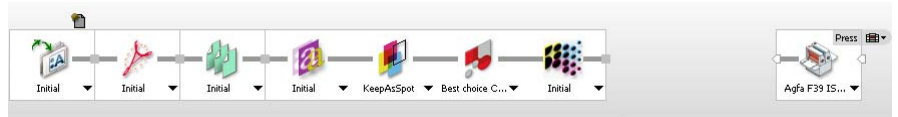
- 5 Name the Parameter Set **Ganging**.
- 6 Select the **Image** tab.
- 7 Select the **Apply Ganging** check box.

- 8 Click **OK**.
- 9 Close the **Parameter Sets** window.

▷ **To build the Production Plan**

- 1 In the **Job Tickets** window, open the **studentname-hardcopyproof-0001.ajt** sample Job Ticket.
- 2 Click the **Plan** tab.

Notice that there is a blank space in the plan. This is where you need to insert the specific proofer that you want to use for this exercise.



- 3 Select your **Proofer** component, and drag it to the blank space in the plan.  
For this exercise, we are using the 8P Epson 4880.



### ▶ To configure the Production Plan components

- 1 Select the **Ganging** parameter set for the **Imaging** operation of the Epson 4880.
- 2 Select the **8P-AMDP250-UHQ-720-cert** Parameter Set for the Output Operation of the Epson 4880.
- 3 Unlock the settings for the Epson 4880 **Output** operation, and in the Media pane choose:
  - Tray
  - automatic sheet
- 4 Select the **Image** Operation of the Epson 4880, and unlock the settings.
- 5 Select the **Image** tab, and select the following:
  - Border: Sherpa-JobLogStrip.
- 6 Select the **Rule-up** tab, and select the following:
  - Pages: select the **Trimbox** check box (with Blue 1pts dashed).
- 7 **Submit** the job.

The **studentname-hardcopyproof-0001** Job Ticket is added to the Job List.

### ▶ To process a document

- 1 Copy the **Apogee Manage 4Pages.pdf** sample file to the studentname-proofing-0001 job.
- 2 In the **Results** tab monitor the processing of the job.

- 3 In the **Pages** tab place all pages of the Apogee Manage 4Pages.pdf document in the Run List.
- 4 **Submit** your changes.

All pages are normalized, rendered, ganged and printed separately on the Epson4880 on A3-sized pages.

## Creating a Page Proof using Ganging

In this lesson you will learn how to create and print a Page Proof and how to use ganging. Ganging means that the pages of one job will be printed next to each other in order to fill the media width.

There are two Ganging options:

- **Across Jobs is selected:** Different jobs are combined into one row if the jobs have the same quality settings. Printing starts when the media width is filled.
- **Across Jobs is not selected:** The pages of one job are ganged and continued when a row of media is filled. The last page is always continued once the rendering is completed no matter the amount of space left in the row.

Finally you will learn how to print the same job on sheet media. In this lesson we will use the **manual sheet** mode of the 8P Epson 7880. You can also use one of the following proofers:

- 6D Sherpa 24m/44m
- 7P Sherpa 24m/44m
- 8P Epson 4800/4880/7800/7880/9800/9880/11880
- 4P Epson 4400/7400/9400
- 7P Epson 4000
- 10P Epson 7900/9900
- 10P HP Designjet Z3100/Z3200

---

**NOTE:** The table model proofers (Epson 4000, 4400, 4800 and 4880) also have an automatic sheet tray.

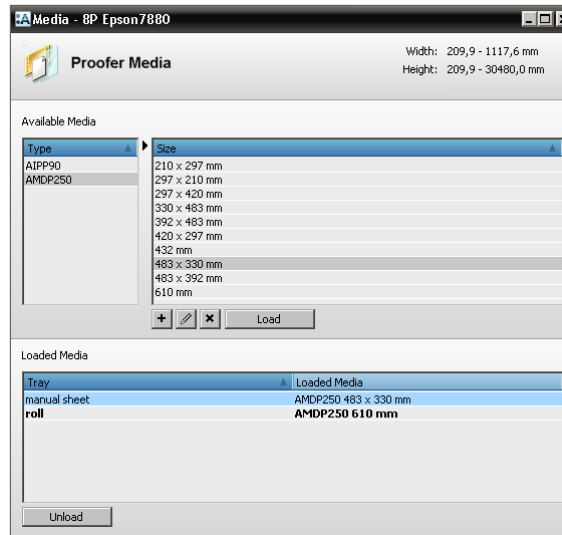
---

### ▷ To load media for your proofer

- 1 In the System Overview window, select your proofer.

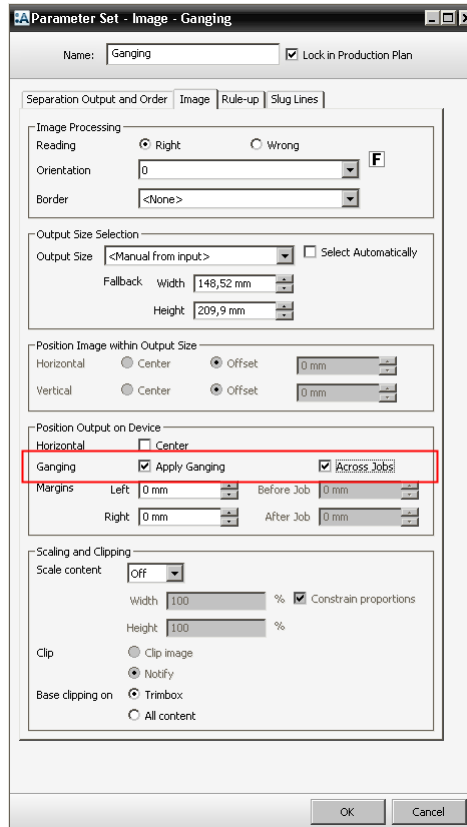
For this exercise, we are using an **8P Epson 7880** proofer.

- 2 Double-click the **Media** Resource.
- 3 In the **Available Media** pane, select **AMDP250** and **483 x 330 mm** as size.
  - If the sheet size is not available, select **AMDP250** and click the **Add (+)** button.
  - In the new window, click to clear the **Roll Media** check box.
  - Specify the width (483 mm) and height (330 mm).
  - Click **OK** to add the media size to the **Available Media** list.
- 4 In the **Loaded Media** pane, select **manual sheet**.



- 5 Click **Load**.
  - 6 Close the **Media** window.
- ▷ **To create a parameter set for your proofer**
- 1 In the **System Overview** window, select your proofer.
  - 2 Double-click the **Parameter Sets** Resource.
  - 3 Click the **Image** Operation.
  - 4 Click **New**.
  - 5 Name the Parameter Set **Ganging**.

- 6 Select the **Image** tab.
- 7 Select the **Apply Ganging** and **Across Jobs** check boxes.

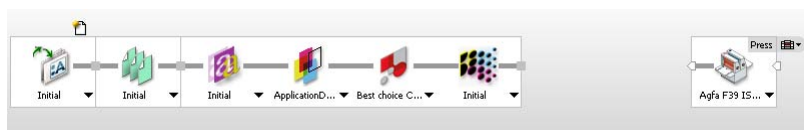


- 8 Click **OK**.
- 9 Close the Parameter Set window.

▷ **To build the Production Plan**

- 1 In the **Job Tickets** window, open the **studentname-hardcopyproof-0002.ajt** sample Job Ticket.
- 2 Click the **Plan** tab.

Notice that there is a blank space in the plan. This is where you need to insert the specific proofer that you want to use for this exercise.



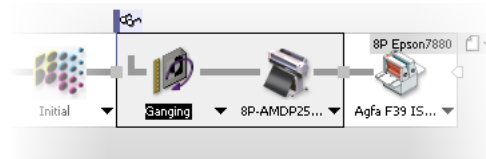
- 3 Select your **Proofer**, and drag it to the blank space in the plan.

For this exercise, we are using the 8P Epson 7880.



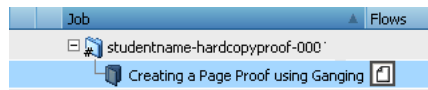
### ▷ To configure the Production Plan components

- 1 Select the **Ganging** Parameter Set for the Image Operation of the 8P Epson 7880.
- 2 Select the **8P-AMDP250-UHQ-720-cert** Parameter Set for the Output Operation of the 8P Epson 7880.



- 3 Unlock the settings and select the **AMDP250** media with **AMDP250 483x330** media size.
- 4 Click the **Run List** and check that the Number of pages is set to **6**.
- 5 **Submit** your job.

The studentname-hardcopyproof-0002 Job Ticket is added to the Job List.

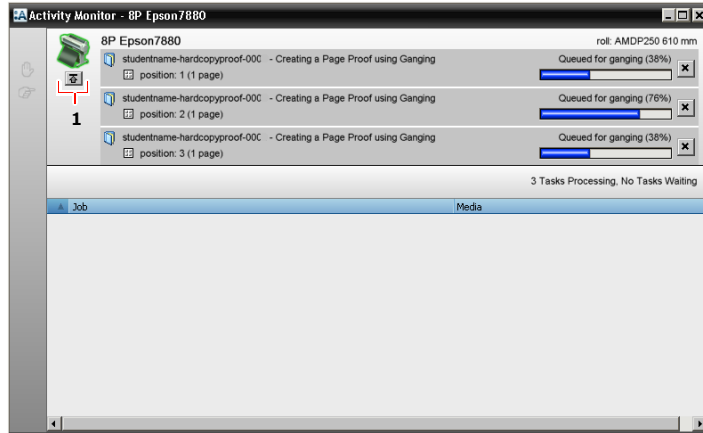


### ▷ To process a document

- 1 Copy the **Apogee Proof 6Pages.pdf** sample file to the **ganging-pages** job.
  - 2 In the **Results** tab monitor the processing of the job.
  - 3 In the **Pages** tab, place all pages of the **Apogee Proof 6Pages.pdf** document in the Run List.
  - 4 **Submit** your changes.
- The processing of the **Apogee Proof 6Pages.pdf** document continues.
- 5 In the Activity pane double-click the **8P Epson 7880** Plan Component.

The **8P Epson 7880** Activity window appears. You will see that two pages are ganged on one sheet. In total, 2 sheets will be printed automatically. The last

sheet with pages 5 and 6 are put on hold until a following page needs to be imaged or when the pages are continued manually by clicking the flush button.



- 1 Flush button
- 6 Look at the proof results.

---

**NOTE:** When using the Across Jobs ganging option, the pages will be queued for ganging until the media width is filled. If you want to force the queued pages to be printed, even when the row is not filled yet, click **Flush**. This is the button under the **8P Epson 7880** icon in the Activity window.

---

## LESSON 2: Certified Proofing

### About Certified Proofing

A contract proof needs to predict the color when a job is printed. It is important that the colors are "perfectly matched" and certified with a report since a contract proof is a "sign-off" for platemaking and printing. Once the proof is signed, the press operator needs to print in accordance with the colors of the proof. So the colors used for the proof need to be realistic.



Today, proofs are not always created by the printing company. It is not always known in advance which press will be used. Therefore, the graphic arts industry is moving to standardized proofing and printing. ISO standards have been created for several printing conditions (ISO12647-2 for offset) and reference proofing (ISO12647-7). These ISO standards are translated by certification institutions (e.g. Fogra and IDEAlliance) for practical usage. This means that the press behavior (combination technique/media/ink) is written (standardized) in a data set: the press profile. This press profile can be used for contract proofing. A control strip can be measured on the proof to check whether this proof matches the press condition. Agfa has achieved official Fogra certifications for its :APOGEE Prepress system with the latest generation of Epson proofers. A Certified Proofing Toolkit is available with more detailed information (and resources) on a wide variety of press conditions (commercial offset, newspaper,



**This tutorial is only a preview of the full advanced tutorial.**

If you would like to obtain the full version of this tutorial or a training on this subject, please contact your local Agfa sales or service representative.

Worldwide addresses of our local Agfa representatives can be found on our Agfa Graphics website:

[http://www.agfagraphics.com/global/en/maings/about\\_us/worldwide/index.jsp](http://www.agfagraphics.com/global/en/maings/about_us/worldwide/index.jsp)

More tutorials are available on [www.apogee.agfa.net](http://www.apogee.agfa.net)

- QMS: How to calibrate but also how to create custom profiles with Closed Loop Profile Optimization.