



THIS UNSPORTING LIFE

Race Horse Deaths in British Racing

An Animal Aid Investigation

Researched, compiled and written by Dene Stansall

Edited by Andrew Tyler

www.animalaid.org.uk/racing

Published: March 2005 ISBN 0-9545115-8-1



Contents



Summary and Sources	1
Introduction	3
Jockey Club - Welfare	5
Deaths on JC Courses	
Breeding Industry	7
Number of horses bred	
Physiology	8
The Race Horse – An Athlete from an Early Age	8
Structure and Objectives of the Racing Calendar	9
Races	
Unequal distribution of prize money	
Common Fatal Injuries Relating to Racing	10
National Hunt Racing	11
Ill-equipped for the task	
The obstacles and the hazards they present	
Ground Conditions	14
Falls Do Not Just Affect the Fallen	14
A welfare and financial problem for the industry	
Form Book Comments	14
Conclusion - All facts on death, injury and sickness must be made public	15
Tables	16
Data relating to horse deaths between 2000 and 2004	

This entire report is available online.

THIS UNSPO

Summary

- The horse racing industry has always concealed from the public, and even from racing correspondents, the number of horses raced to death every year. Information on mortality is becoming more, rather than less, difficult to obtain.
- Animal Aid has conducted a study of available evidence – including 15,000 pages of race results – to produce the most comprehensive survey of Thoroughbred racing fatalities ever to have been made public.
- Previous estimates – even by animal protection groups such as Animal Aid – have suggested a maximum figure of 300 annual equine deaths. Our new investigation shows that around 375 horses who are entered into races each season die from their injuries; or they are killed because they are considered of no further commercial value, even though they are young enough to continue racing. However, this total is almost certainly short of the true figure. This is because our data is drawn from the *Official Form Book*, which does not list all deaths.
- Reasons for horses being destroyed include broken legs, back, neck and pelvis; fatal spinal injuries, exhaustion, heart attack, and burst blood vessels in the lungs.
- To the 375 racing casualties must be added the far larger, but unrecorded, number of ‘inferior specimens’ who are disposed of annually before they ever get to race – and the animals who are killed at the end of their racing careers, instead of receiving a properly-funded retirement. These victims probably total several thousand annually.
- This report concentrates on the racing casualties. About 30% of the 375 annual victims die on the racecourse itself. This is an extraordinarily high figure given that the 59 British courses each stage, on average, a mere 12 racing days every year.
- While some 30% of annual fatalities occur during, or immediately after a race, the remainder are killed because of injuries received in training, or after being assessed by their owners as no-hopers.
- The four most hazardous of all the country’s courses are run by racing’s own governing body, the Jockey Club. These are Cheltenham, Aintree, Warwick and Carlisle. From just 54 days racing at Cheltenham, there were no fewer than 21 on-course deaths.
- Every year, many more Thoroughbred foals are produced than the racing calendar can accommodate. But such is the number of animals rated in the bottom third of the ability range that their owners often enter them into poorly-organised, under-funded events, where the going might be dangerously firm. This is in a desperate attempt to recoup their costs. Equine deaths come frequently on such occasions.
- It is not unusual for two horses to die in a single race. Three fatalities at a single meeting is also common. 16 horses died on-course during just 16 days (from March 9 to March 24, 2004) – yet no formal action was taken. Nor was there any official response to 10 on-course dead in just 8 days – from March 30 to April 6, 2002.
- The majority of fatalities occur in jump racing. Horses used to be selectively bred for this sector. They were heavier-boned and more robust than the faster animals racing on the flat. Because of the increasing emphasis on speed in all racing sectors, horses entered into jump races are now more often ‘cast-offs’ from the flat. Deaths, as a consequence, are more common.

- Downhill fences are especially dangerous because of the difficulty in resisting the immense gravitational pressures.
- Another acute hazard are fences positioned too close to the start.
- Subjecting novice horses to the same testing jumping conditions as experienced animals, will inevitably result in high rates of injury and death.
- Aintree's Grand National course remains uniquely challenging and horses continue routinely to die on it.

Source Material

- *Raceform Official Form Books: NH Chaseforms & Flat Annuals 1999 to 2004*
- *Raceform Horses In Training 1999 to 2004*
- *Raceform Update*
- *Racing Post*
- *Racing Post Website*
- *Racing Post Weekender*
- *Running For Their Lives – Animal Aid Report*
- *Riding For A Fall – Animal Aid Report*
- *A Hiding to Nothing – Animal Aid Report*
- *Stud Adventures In Breeding – Kevin Conley*
- *Summerhays' Encyclopaedia for Horsemen revised edition*
- *The Racegoers' Encyclopedia – John White*
- *The Racehorse Conformation and Action – Lt.Col. P.E. Ricketts DSO., MVO.*
- *The Rider's Handbook – Angela Sayer*
- *Jockey Club Website*
- *Weatherbys*

© PA PHOTOS



Introduction

Among the best kept secrets in British sport is the scandalously high number of racing-age Thoroughbred horses who die every year. They die as a result of injury, heart attack or some other performance-related condition – or they are killed simply because they no longer make the commercial grade. Previous estimates – even by animal protection groups such as Animal Aid – have suggested a maximum figure of 300 annual casualties. This was based on the limited information available through official and unofficial industry sources. In the five years since Animal Aid has been compiling an ongoing audit of racing's animal victims, published data has become even more scarce.



Undeterred, we have spent more than six months conducting an analysis of literally thousands of racing results going back four seasons. We have also scrutinised thousands of races broadcast on television. What emerges is a far more depressing picture than was previously imagined. Around 375 horses who are entered into races each season die, or are killed by the end of it. This is in addition to the far larger, but unknown, number of 'inferior specimens' who are disposed of annually before they ever get to race - and the animals who receive a bullet through the head at the end of their racing careers, instead of a properly-funded retirement. These victims probably total several thousand per year.

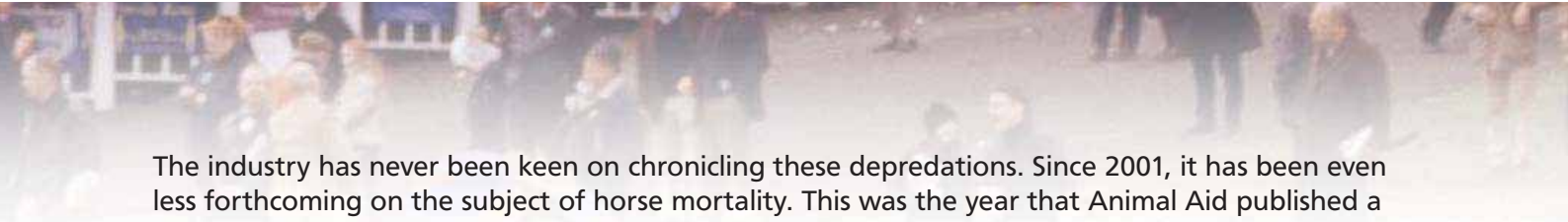
This report concentrates on the racing casualties. Of the 375 who perish annually, about 115 – or 30% of the total – die on the racecourse itself. This is an extraordinarily high figure given that the 59 British racecourses each stage, on average, a mere 12 racing days every year.

Incredibly, our survey indicates that the four most hazardous of all the country's courses are run by racing's governing body, the Jockey Club. These are Cheltenham, Aintree, Warwick and Carlisle. From just 54 days' racing at Cheltenham, there were no fewer than 21 on-course deaths.

While some 30% of annual fatalities occur during, or immediately after a race, the remainder are killed because of injuries received in training, or after being assessed by their owners as no-hopers.

The image of the race horse that the industry wishes to promote is of a cherished and cosseted animal. What is concealed from the public – whether they be armchair television viewers or champagne-sipping habitués of the growing number of on-course hospitality tents – is that the life of a Thoroughbred racer is a series of unremitting challenges.

It starts in the sale ring; followed by the demands of a strict training regime; the race course debut; the requirement to perform for years at a consistent level; the uncertainty of retirement; and, eventually, a date with the knacker or slaughterer – that is if the horse has not already met a premature end somewhere along the line. Animals selected for breeding face another daunting set of challenges. At the top end of the business, the reproductive potential of both males and females is ruthlessly exploited. This is done, typically, through the use of drugs, oppressive artificial daylight regimes and, for the 'high quality' males, punishing trips to the other side of the world to impregnate females who are hormonally receptive when mares in the northern hemisphere are 'idling'.



The industry has never been keen on chronicling these depredations. Since 2001, it has been even less forthcoming on the subject of horse mortality. This was the year that Animal Aid published a report called **'Running For Their Lives'**, which revealed that 247 horses had been raced to death during the 1999/2000 jump (National Hunt) season. Each horse victim was named and a breakdown was given as to whether he or she died on course (91 victims), or off.

(For more information, see **'Running For Their Lives'** www.animalaid.org.uk/racing)

Information on horse casualties is no longer available through official 'Scratchings – Dead' reports that were regularly published in the racing press. These identified animals who had died on the racecourse. They also included animals who died or were destroyed off course due to a persisting race injury, a training accident, or because they were no longer viable racing machines.

One of the few remaining sources of information about racecourse deaths is the *The Official Form Book* (incorporating the *Racing Post Form Book*). This annual volume, however, is primarily produced as a betting tool for horse racing punters. The structure and layout are designed to identify future prospective winners. It is written by a dozen race readers, each with his or her own perspective on the merits of individual horses, and it is for them to decide whether or not the fate of an injured or fallen horse is reported. While their reports are accurate assessments on the running of the races, the writers are not charged with investigating and recounting the fate of every horse. That responsibility must lie with the racecourses, the vets and the stewards of the Jockey Club, and with racing's promoting body, the British Horseracing Board (BHB).

Weatherbys is the industry body that supplies bloodstock information to breeders, through its publication, *The General Stud Book*. It also keeps information on dead horses under a contract with the BHB. It is understood that these records are comprehensive – covering both on and off course deaths of all horses 'in training'. Animal Aid has made repeated requests for this information from Weatherbys but, promises of assistance notwithstanding, no data had been provided at the time of writing.

What becomes clear from Animal Aid's comprehensive analysis of racing is that it is today thoroughly 'breeder driven'. A hunger for profits has resulted in a mass output of foals that, in Britain and Ireland alone, totals some 16,000 animals annually. Of these, somewhere between one third and one half may ultimately make a racecourse debut. The remainder are essentially a waste by-product. They are killed for pet food, fed to hunting hounds, used for other equestrian events, or sold from owner to owner in a downward spiral of neglect.

On the back of the breeding industry ride a number of financially powerful, multi-national companies. In Britain, the 'big three' bookmakers – Ladbrokes, Coral and William Hill – control the punters' money. However, the new kid on the block, Betting Exchanges, now terrifies the big three, not least because it has torn up the rulebook by taking bets on horses to lose races. Press and television companies also often have a major financial stake in racing, with the line between editorial and advertising frequently difficult to detect, especially in relation to the promotion of the major events.

Most racecourses themselves are today owned by a small number of big businesses. The exceptions are the smaller courses – particularly National Hunt (jump) tracks in the far-flung corners of Britain. These are maintained on a shoestring and offer basic facilities for both horse and human.

At the centre of the whole edifice is the 250-year-old ruling body, The Jockey Club, whose stated function is to oversee key aspects of the business and deal with problems such as race-fixing and the use of performance-enhancing drugs and horse welfare. Such is its inability to maintain control of a fast-evolving industry that – sometime in 2005 - its official functions will be given over to a new body called the Horseracing Regulatory Authority (HRA). However, the HRA will employ many of the same Jockey Club staff in similar positions. Little looks set to change in regard to horse welfare.

The Jockey Club – Welfare

It is not uncommon to see two or three deaths in one day at courses around the country, or even multiple fatalities at a single course. Injuries – some of which subsequently prove fatal – are also daily occurrences.

While researching this report, Animal Aid made a formal request to the Jockey Club for data on horse deaths. At the time of writing – several weeks after asking – no response has been forthcoming. This tight-lipped approach extends to racing correspondents. They are provided with no data on the nature of injuries suffered by horses who die or are destroyed on racecourses – let alone details about deaths during training.



Animal Aid searched the JC website during February 2005 and found confident claims about the organisation's alleged proactive welfare role. The pronouncements appear not to have been updated since the year 2000 – a matter of some significance given that Animal Aid's research shows that there has been no improvement in the lamentable rate of death and injury to racehorses since we first began our detailed research some five years ago.

Taken from the Jockey Club Website (www.thejockeyclub.co.uk) are the following comments:

'No issue has a higher priority for the Jockey Club than the safety and welfare of the horse.'

'An invaluable tool in expanding the welfare role has been the introduction of a veterinary database. The lameness and injury data collection scheme improves racehorse safety because it monitors the return to racing by horses who have been off the course through injury. The database also allows structured analysis of all injury data to help identify possible factors increasing the risk of injury. Jockey Club Veterinary Officers are responsible for all data recording to maintain consistency.'

The website goes on to refer to a number of ongoing studies of risk factors associated with horse injury and death. It also boasts of having devised improved specifications for horse ambulances. Structured analyses, ongoing studies and better ways to carry off the dead and injured are all very well but what is missing from the JC's approach is any meaningful effort to address known, avoidable causes of injury and death. Some obvious ways would be to remove downhill fences and to prevent novice horses from being subjected to the same testing racing conditions as experienced animals. The implementation of just these two steps would produce a dramatic reduction in injuries and deaths.



Among the most deceptive statements on the JC website is the following:

'Fatal injuries in racing are relatively uncommon but, as in any sport, there is an element of risk for the participants.'

As this report highlights, one racing-age horse dies, on average, every day of the year. The Jockey Club knows this. It also knows that the equine participants have no choice but to race, and that their riders will invariably lash them en route to the finishing line with a narrow plastic rod, the 'whip'. (For further information, see '**A Hiding To Nothing**', a 2004 Animal Aid report on use of the whip in racing. www.animalaid.org.uk/racing)

Deaths on Jockey Club courses

The Jockey Club is well-placed to know all about on-course equine fatalities, given the number of animals who perish at the 13 racecourses it operates through the Racecourse Holdings Trust. Its estate is as shown left.

7 large courses:

Aintree NH
 Cheltenham NH
 Epsom Flat
 Haydock Park NH/Flat
 Kempton Park NH/Flat
 Newmarket Flat
 Sandown Park NH/Flat

6 smaller courses:

Carlisle NH/Flat
 Huntingdon NH
 Market Rasen NH
 Nottingham Flat
 Warwick NH/Flat
 Wincanton NH

This report demonstrates that – during our study period – not only were the most dangerous of Britain's 59 racecourses all JC-owned, but that Jockey Club courses scooped more than one top place in the mortality leagues – particularly where jump racing is concerned. During the 2001/2002 NH season, Aintree and Haydock were first and third on the

list. The following year, Carlisle, Cheltenham and Aintree filled the top three spots. In NH season 2003/2004, Cheltenham, Warwick and Carlisle were the deadliest. Cheltenham alone, saw 21 deaths in just 54 days' racing.

Market Rasen and Huntingdon also had depressingly high numbers of dead horses on their consciences. In all, 104 fatalities occurred on JC courses over the study period.

Breeding Industry

Number of Horses Bred

The British and Irish breeding industries are closely linked and together produce thousands of foals annually.

The steady annual increase prompts an important question: Is the racing industry in the 21st Century, 'Breeding to Race', or 'Racing to Breed'. The latter formulation would be hot favourite with any bookie.

Foals Registered at Weatherbys

2003	2002	2001	2000	1999
16,003	15,368	14,177	13,985	13,480

If you have a Classic-winning three-year-old Thoroughbred, the temptation is to rush off to stud – and most do.

The world's current most fashionable – and highly lucrative – stallions are all descendants from the late 20th Century sire Northern Dancer. They are Saddlers Wells, Storm Cat and, more recently, Giant's Causeway. In a single season, one sire can be used to impregnate 100 mares. The offspring are themselves then nurtured as prospective breeders, with the owners looking to get a result from them in a Classic or other Group race so that the animal's status is assured and the money-driven breeding cycle can start again.

The new progeny are soon in the Foal and Yearling Sale Rings, where the big money is to be earned. Tattersalls, Goffs, Doncaster and Ascot are some of the high-status salerooms in Europe, whilst Keeneland in Kentucky is the world market leader. Storm Cat's offspring averaged \$1.68 million at the 2001 yearling sales.

© BRIAN MOODY



Physiology

A horse's development takes five years from birth to maturity. The shape and structure of the body go through many changes during this period, with animals more or less vulnerable at different times in terms of their bone and cartilage development. Among the problems faced by modern race horses is that no proper account is taken of these vulnerabilities. To require four year olds, for instance, to jump stiff 4ft 6in. chase fences is to expose them to an unacceptable risk. Our report bears out this point with depressing clarity.

Equally, the close bloodlines of the breeding industry have given rise to equine health problems that are increasing over time. The loss of bone strength in favour of speed is all too apparent in the number of casualties that are highlighted in this report.

(See also Animal Aid's '**Riding For A Fall – The Genetic Time Bomb at the Heart of Racing**' www.animalaid.org.uk/racing)

The Race Horse An Athlete from an Early Age

© BRIAN MOODY



The majority of Thoroughbred race horses are born between January and June but all are given an official first birthday of January 1 of the following year. They can start to race from the March of their second birthday, even though, as individuals, horses develop at different rates.

Requiring horses to perform to constant standards during their growth years is unreasonable. The harsh training regime and the demands of race-day will sooner or later adversely affect their well-being. Top-rated young colts and fillies can burn out very quickly – failing to procure for their 'connections' the anticipated 'Classic' win by the age of three. A recent example of stress-related early burn-out – compounded by extreme in-breeding – is the top rated two year old Irish-trained, American-bred colt, called One Cool Cat. Another is the French-trained, American-bred, Denebola. Both highly-inbred animals displayed performance setbacks and One Cool Cat retired to stud, aged three, before he even reached maturity. It is not uncommon to see a 100,000 guineas saleroom star fallen by the wayside, trying to jump hurdles on a windswept National Hunt racecourse instead of racing on the usually more lucrative flat.

Animal Aid has found that of the 127 on and off course fatalities that occurred during the 2000 flat season, no fewer than 76 of the horses (nearly 60% of the total) were younger than five years. Heart failure, bone breaks and fractures were the common causes.

Structure and Objectives of the Racing Calendar

Races

The calendar of annual racing events is orchestrated by the British Horseracing Board. The programme is based on established races and meetings, and new initiatives that the BHB believes will benefit racing as a whole. However, with an escalating number of horses being bred every year, owners and trainers are often so desperate to enter their animals for a run that they will opt for events where the race conditions are ill-suited to their horse's needs. It is animals with the lowest rating – i.e. those with the least running ability – who suffer most. In the hope of picking up small amounts of prize money, such horses, in one year, might be entered into a stressful combination of All Weather, Turf Flat, Hurdles, Chase fences or even in Point-to-Points.

In an effort to provide races for these horses at the bottom of the handicap, 'Banded' races were introduced in January 2004 on All Weather courses. However, such are the numbers of animals rated in the bottom third of the ability range that hundreds still cannot be accommodated. These poorly-organised and grossly under-funded races have been crudely described by television pundit, James Willoughby, as 'meatball racing', such is the respect accorded to horses in this category.

National Hunt (jump) racing also tries to accommodate low-ability horses – by staging events in which only unpromising prospects can take part. They are known as 'selling' races and, as the name suggests, the equine participants are offered for sale at the end of the proceedings, even though, in reality, only those who perform well are likely to attract a bid. The problem with 'sellers' is that owners – who may simply have entered a horse hoping to win a little prize money and who do not wish to part with their animal - have to respond to bids. Either they sell or attempt to outbid any competition and retain their own horse. Through this process, horses can pass from owner to owner, with serious welfare problems resulting.

Unequal Distribution of Prize Money

The amounts of money to be won by owners of winning animals vary dramatically. Flat racing takes the dominant share, with Group and Listed races offering huge sums to the winners. More significantly, post-retirement stud fees accruing to the winners of such races provide even greater rewards to owners. At the other end of the scale, Selling and Banded races offer one or two thousand pounds to the winner and a couple of hundred for a placed horse. This means that less able horses must run more races in often extremely challenging conditions in order to try to cover training and vet costs. Towards the same end, the owners and trainers of such horses will often place bets on their animals – a situation that gives rise to suspicions of race-fixing when betting odds change dramatically as a result of sudden influxes of money.

Two extreme examples of the variable value of horses are as follows:

- **2003 Epsom Derby** £852,600 went to the winner. Even the third place horse won £161,700. Potential Stud Fees are £50,000 for each mare 'covered'. If 150 such coverings are made in a year, total stud earnings would be £7.5 million.
- **2003 a Market Rasen Selling Hurdle** Win Prize Money: £1,810 – 3rd Place: £259. There was no bid for the winner – 9 year old Count Tony. Hopefully, his owners will give him a decent retirement in the not-too-distant future.

Common Fatal Injuries Related to Racing



Horses are destroyed due to:

- Broken legs from the shoulder to the coronet
- Tendon and ligament injuries
- Deep tissue damage, after being 'struck-into' by another horse
- Damage caused by back hooves striking front legs – known as over-reach
- Broken necks
- Broken backs
- Broken pelvis
- Fatal spinal injuries
- Exhaustion
- Heart attacks
- Internal injuries – e.g. burst blood vessels in the lungs

National Hunt Racing

Ill-equipped for the task

Until 30 or so years ago, horses destined for jumps were given time to mature – typically, in an Irish field – ready to begin racing at the age of five. No longer is such growing time commonly allowed. And there are other important recent changes in the shape of the National Hunt sector. These specialist animals were once ‘custom-made’ for the task. They were selectively bred to be larger, more robust and with greater bone strength than their faster, sleeker counterparts racing on the flat. Notable sires of the jumping breed included Deep Run, Strong Gale, Menelek and Pongee. Today, with the emphasis in every part of the industry on speed, a large percentage of NH horses are simply cast-offs from the flat – animals who failed to make the top grade in that more profitable discipline. The planet is scoured for horses just below ‘Group’ ability who may give their owners an edge. French and German horses are popular. Horses from Australia, New Zealand and Argentina are also seen on British jumping courses.

The Obstacles

There is a formidable range of obstacles confronting animals racing over jumps:

- **Hurdles**

Hurdles are 3 ft 6 in. high when slanted, and have a relatively small spread compared with a fence. Their comparatively modest size belies the danger. Hurdles are jumped at greater speed than fences. Fallers are frequently killed, while other horses who are unable to react quickly enough in order to escape the falling animal, are brought down, with often fatal consequences.

- **Fixed Brush Hurdle**

Based on the French hurdle design, these obstacles are similar to plain fences but lower in height. Unlike the traditional hurdle they are very rigid in construction.

- **Chase (Or Plain) Fences**

The plain fence is made from compacted birch cuttings, bound and placed in a rigid frame. The density of the birch governs the fence’s ‘give’ and ‘stiffness’. Many courses, such as Cheltenham, Aintree and Warwick, have stiff fences, which means horses cannot brush through the top and are very likely to fall if they make contact with it. The fence has a standard height of 4 ft 6 in. with a spread of 8ft.

- **Open Ditch Fence**

The open ditch is similar to a plain fence but its spread is 11ft. This extra spread is due to an open ditch on the take-off side.

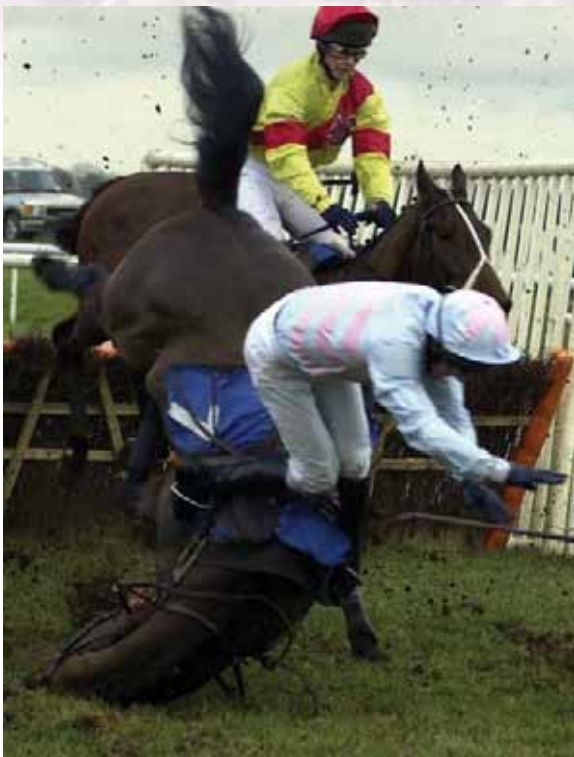
- **Water Jump**

The fence itself is 3 ft high and it has a 2 ft spread. It also features a shallow water pool, giving a total spread of 11 ft. Though comparatively small, water jumps kill two or three horses each season.

Two courses present a set of obstacles that break with the traditional format: Aintree’s Grand National Fences and Cheltenham’s Cross-country course.

The Grand National Course

The Grand National’s fences are of variable height, with the most imposing being an open ditch known as The Chair. It is some 5 ft 2in. high and has a huge ditch and spread unmatched on any other racecourse around the world. However, there are other daunting fences to be jumped, including the infamous Becher’s Brook that has claimed many horses’ lives. On approach, Becher’s



seems like a typical National fence but the catch is on the landing side. Here, not only does the ground drop away so that it is lower than the point from which the horse takes off, but it drops lower on the side nearest the rail – the territory some jockeys would try to claim for the shortest route round. In addition, a water filled ditch lies at the foot of the fence, into which fallen horses have sometimes rolled back. Alterations over recent years have reduced the chances of 'roll-back' and the ditch is itself more shallow than in the past. These changes were made after a fatally injured horse, called Brown Trix, had to have his head held out of the water to save him from drowning, in a year when another horse was killed at the fence. But Becher's remains a very dangerous obstacle. The Canal Turn is another major hazard. On its other side, the course turns 90 degrees. This leads to most jockeys opting for an inside berth, causing horses to bunch and many to fall. The outstanding 'Roll A Joint' died at this fence.

Cheltenham's Cross-Country Course

Cheltenham's Cross-country course is a relatively new innovation. Inspired by equestrian events and the more variable layout of European courses, it is, in parts, without the standard running rail to guide the riders around. In fact, many riders have been suspended for taking the wrong route! It is relatively unsuccessful in racing terms due to its lack of pace. It serves purely as an eye-catching, incident-packed feature for specialist horses that has little appeal to owners and trainers other than the decent prize money on offer.

Positioning of Obstacles

Favourable positioning of fences and hurdles is crucial to the safety of the race horse. There are many obstacles, however, that are deliberately set to catch out horse and jockey. These are described as 'trappy'.

Downhill fences

Downhill obstacles are particularly nasty and cause many equine fatalities. This is due chiefly to the momentum gained as the animals approach the jumps and the difficulty they have of resisting the gravitational pull that makes jumping itself difficult. Even if they clear the fence rather than running into it, gravity can tend to bring them headfirst to the ground upon landing. The schooling of horses for such obstacles must be difficult, if not impossible, for many trainers – the high number of novice deaths at downhill jumps bears testimony to this. Cheltenham's downhills are notorious and over many decades have killed seasoned and novice horses alike. There was no sadder sight than that of Tardar, at the 2004 Festival meeting, who lay fatally injured, trying to lift his head, his ears twitching, as the other horses galloped away. His death was unseen by the roaring, excited crowds, having happened out in the 'country', and it received barely any mention by race commentators. Tardar's jockey was also seriously injured, and could have easily suffered the same fate as the horse.

Jumping too young

Another unpalatable feature of the racing calendar is the staging of chase events for four year olds. There is an argument that says the younger a horse starts jumping the better he or she will be. This is based on studies of European race horses. The Europeans, however, have brush-through

fences and a mix of obstacles that 'school' the horse. They do not just drop animals in at the deep end.

The worst example of four year olds coming to grief during this report's study period, was at Warwick on November 23, 2003, in the Highflyer Bloodstock Four Year Old Novice Chase. The event was over two miles on fast ground. Six horses started, one was killed at the first fence; one blundered badly at the second, unshipping his experienced jockey; and a third horse took a very nasty fall at the last fence. Only three completed the course – the last horse trailing some distance behind the winner.

Too close too the start

Fences positioned too close to the start of a race can also be a problem. The Thoroughbred is known for nervousness and can take time to settle. If a novice is not settled at the first obstacle, and is fighting the bit, taking a pull, or if his eye is not in on the short approach, then danger looms quickly. Deaths are common at first flights. Red Halo at Warwick and Great Oaks at Plumpton are two examples from our study period.

Too close together

Similarly, if fences come quickly after each other - particularly in the home straight when the race is on, and exhausted horses are being pushed to their limit – then disaster is almost inevitable. From our study, Ludlow must be highlighted for its four fences in the straight after the home turn. The fourth last fence - known to jockeys as 'Tricky Trevor' – was moved off the bend because of complaints by the riders that it was a seriously dangerous obstacle. However, instead of being removed altogether, it has been squeezed into the straight, giving a daunting line of four for the horses to face. The consequences of this realignment were all too apparent with the death of two horses in a three horse race. The novices Sharp Steel and Occam were killed at these Ludlow fences on November 13, 2003.

Sanded roads over courses also frequently serve as obstacles, and at least one such fatality occurred during the study period. The victim was a young horse who tried to jump the road and broke a leg in the process.

The problem with visors

The use of visors may also have contributed to the annual death toll in jump racing. Animals wearing them for the first time are particularly vulnerable. Horses with visors run at increased pace, maybe through fear of not being able to see what is behind them. They may also have an obstructed view from the visor as they approach the obstacle. A fatal fall from increased speed and poor visibility can be the result.

Stiff fences

Horses also pay with their lives when falling at stiff fences. Many race professionals would argue against this comment, but the facts speak for themselves. The highly talented Behrajan suffered awful neck injuries and died at the same stiff fence at Warwick racecourse that killed the novice Red Halo.

The Grand National course at Aintree with its stiff fences has killed many, many horses over the years. Less well known to the public are the Mildmay fences situated inside the National course. These too are stiff. The great Desert Orchid was brought down to the ground here, and the top horse of the 1990s, One Man, died at a Mildmay fence that crashed him into the Aintree turf.



Stiffness of fences is variable. Fences are usually rebuilt every two seasons. When first constructed, the birch is compact and, if little leaf is left on the twigs, then there is hardly any 'give'. With time, the birch gets kicked out during races and the fence becomes a little 'easier', though repair is often required to maintain shape and size. Some racecourses, such as Doncaster, have fences that are portable and can be moved to better ground to suit the prevailing conditions.

Ground Conditions

Many trainers are reluctant to run their horses on Firm, or Good to Firm ground because of the hazards such conditions present. Where horses are required to race on such ground, many will hold back, since jarring can give rise to injuries. Horses who fall on this ground commonly die. Thus, while small fields of horses line up on firm ground, there is a greater than average opportunity for their owners and trainers to earn prize money. If just three horses start, providing they jump all the way round on NH courses, or pass the finishing post on the flat, they are guaranteed a financial return. The Ludlow race mentioned earlier, where Sharp Steel and Occam both died in a three horse race, was a typical example of horses of limited ability being forced to take chances and paying with their lives. Owners, trainers, jockeys, the racecourse, the veterinary profession and the Jockey Club are all answerable.

Falls Do Not Just Affect the Fallen A Welfare & Financial Problem

The falls of horses can cause chaos in a race and hamper other runners. Frequently, other horses are brought down and some are fatally injured.

Welfare problems aside, injuries are financially extremely costly to race horse owners and trainers. Our study has found that, in the 2003/2004 NH Season, no fewer than 454 horses who fell, or were brought down, did not race again that season.

Form Book Comments



The Form Book race readers sometimes register their own reaction to the pain and suffering of race horses, through the terms they use to describe falls. They include: Horrific, Heavy, Nasty, Ugly, Awful, Awkward, Crashing. On the result of the fall, they write of the potential 'loss of confidence' and 'mental scarring' that will affect performance in future races.



Conclusion

All facts on death, injury and sickness must be made public

Through painstaking research of available data, Animal Aid demonstrates in this report that around 375 horses are raced to death every year. Most die young from broken necks, legs, backs, or from heart attacks. Even larger numbers are killed because they fail to make the commercial grade or because they have come to the end of their exhausting racing careers. All these victims are individuals in their own right. We name many of them in our tables. Earlier Animal Aid reports revealed extremely high levels of stress-related equine injury and disease – notably, gastric ulcers and bleeding lungs. Collectively, our evidence points to an inherently exploitative industry that has little regard for the Thoroughbred workhorse on whom profits and glory depend. Animal Aid argue that it is an industry undeserving of the massive public support that comes its way through betting and racecourse attendance revenues. Nor should the industry, in our view, be allowed to regulate itself through the Jockey Club, or what looks set to be an equally unaccountable successor body, the Horseracing Regulatory Authority.

Are we right to argue that racing is intrinsically exploitative? How can the public make a judgement if the full facts about equine disease, neglect, injury, death and abandonment are concealed from them? We have worked hard to assemble and reveal what exists in the public domain. We call upon the Jockey Club to offer up for public consumption the complete truth. If the JC is so confident that racing can defend its reputation on the basis of proper disclosure, then, we say, put that confidence to the test.

In response to a written request for hard mortality data, Animal Aid received no answer. In fact, not even racing commentators are given such information. This is despite the JC's fondness for spinning out fine-sounding rhetoric: 'No issue', it likes to declare, 'has a higher priority for the Jockey Club than the safety and welfare of the horse.'

The truth has a way of leaking out. We have revealed a good deal of it in this report. The JC knows more. We say: it's time to come clean and let the public decide.

Tables

Data Relating to Horse Deaths 2000 - 2004



Report Scope, Terms and Criteria16

Key to Layout and Abbreviations.....17

Number of Horses Killed.....17

Totals for all seasons covered by the report including NH 1999/2000 *

* taken from Animal Aid's previous report '*Running for Their Lives*'

Names and Numbers of Horses Killed.....18

On & Off Course Race Horse Deaths Flat/AW Season 2000
 On Course Race Horse Deaths Flat/AW Season 2001
 On Course Race Horse Deaths Flat/AW Season 2002
 On Course Race Horse Deaths Flat/AW Season 2003
 On Course Race Horse Deaths National Hunt 2000/2001
 On Course Race Horse Deaths National Hunt 2001/2002
 On Course Race Horse Deaths National Hunt 2002/2003
 On Course Race Horse Deaths National Hunt 2003/2004
 National Hunt Deaths – Breakdown of Race Types/Seasons

National Hunt Racecourses Where Deaths Occurred.....24

NH Season 2000/2001
 NH Season 2001/2002
 NH Season 2002/2003
 NH Season 2003/2004

Graphs: Horse Death Numbers; Mean Deaths to Days Racing

Combined List of Seasons/Racecourses with Mean Deaths to Days Racing

Report Scope, Terms and Criteria

This report into race horse deaths was compiled during 2004/2005. The principle source was *The Raceform Official Form Book*, which does not list all equine fatalities. The true figures will therefore be higher.

All three British horse racing disciplines were covered:
 Flat & All Weather (grouped together) and National Hunt (NH)

Data was collected to cover Flat & All Weather Seasons' races: 2000; 2001; 2002; 2003
 and National Hunt Seasons' races: 2000/2001; 2001/2002; 2002/2003; 2003/2004

For Flat and All Weather Horse Deaths, horses were named with age and sex given. They were then totalled.

All National Hunt races were included: Chases; Novice Chases; Hurdles; Novice Hurdles;
 NH Flat Races

British horses killed abroad were noted, as were foreign horses killed in Britain.

Individual 'National Hunt Racecourses Where Horse Deaths Occurred' charts highlight each NH Season of the study. They display the number of horse deaths at each racecourse for that particular season and show, alongside, the number of days racing that season at that racecourse. Total figures are shown and a mean figure is given at the foot of the table specifying the number of horse deaths per hundred days racing. This allows for season-to-season comparisons.

A chart combining the overall study period of NH deaths at individual racecourses displays a mean figure that gives the number of horse deaths per hundred days racing. This allows individual racecourses to be compared, rather than just comparing the total number of horses killed on a year-by-year basis. This gives a more accurate and reliable assessment of the racecourse's record over a number of seasons. The tally includes the total number of racing days at all courses – not just those courses that suffered deaths. Lingfield is not included, as it did not have consistent NH racing over four seasons, with only seven days NH racing in total.



The two graphs cover the same period of NH horse deaths. The first graph totals the deaths for each season. The second graph shows the mean number of horse deaths per hundred days racing assessed from the total days racing from courses where deaths occurred. This gives a more accurate and reliable assessment of each season, particularly in view of the six month foot and mouth outbreak in 2001 that resulted in many NH race meetings being cancelled. This, in turn, reduced the number of horse deaths that season. However, when the reduced number of racing days was taken into account, the death toll was consistent with the other seasons that were studied.

Key to Layout and Abbreviations

National Hunt Layout

Tally • Name of Horse • Type of Race & Class of Race • Distance of Race • Number of Obstacles Jumped • Racecourse • Date • Cause of Injury • Jockey • Trainer • Number of Horses in Race • Ground Conditions (Going) • Age of Horse • Weight Carried by Horse • Horse's Official BHB Rating • Position in Race when Injury Occurred • Reason for Death.

National Hunt Abbreviations

NH = National Hunt (Jump Racing); **Nov** = Novice

A-W / OR = Age of Horse – Weight Carried by Horse / Horse's Official BHB Rating (Ability Rating)

Class of Race = 'A' top rated race though to 'H' lowest rated race

Dist. = Distance of the Race; **m** = distance of the race in miles to the nearest half mile.

m f = miles and furlongs re: NH Flat Races; **f** = furlong (eight to a mile)

Ob. = Total Number of Obstacles to be Jumped in the Race either fences or hurdles

fncs or fnc = fences; **hdls or hdl** = hurdles

Fell (1st, etc.) = the fence or hurdle at which the horse fell

BD = Horse was Brought Down by a fallen horse; **UR** = Unseated the Rider (Jockey)

PU = Horse was Pulled Up and stops racing

Blnd = Blundered at a fence or hurdle; **Mistk** = Mistake at a fence or hurdle;

Hmpd or Hp = Hampered by another horse; **rmt** = Jockey remounted horse after falling

Inj. = Injured; **S.I.H.** = Horse struck into himself (back legs struck front legs)

Flat / AW (All Weather) Layout

Tally • Name of Horse • Age of Horse • Sex of Horse • *Horses Killed on a Racecourse.

Flat / AW Abbreviations

c = colt (male horse under 5 years old); **h** = horse (male horse aged 5 years or older);

f = filly (female horse under 5 years old); **m** = mare (female horse aged 5 years or older);

g = gelding (castrated male horse that can be of any age)

Number of Horses Killed

Flat & All Weather Season 2000

Total Horse Deaths exposed: 127

Total Horse Deaths on Racecourses: 23

Flat & All Weather Season 2001

Total Horse Deaths: projected 106

Total Horse Deaths on Racecourses: 19

Flat & All Weather Season 2002

Total Horse Deaths: projected 139

Total Horse Deaths on Racecourses: 25

Flat & All Weather Season 2003

Total Horse Deaths: projected 100

Total Horse Deaths on Racecourses: 18

National Hunt Season 1999/2000

Total Horse Deaths exposed by Animal Aid: 247

Total Horse Deaths on Racecourses: 91

National Hunt Season 2000/2001

Total Horse Deaths: projected 132

Total Horse Deaths on Racecourses: 49

National Hunt Season 2001/2002

Total Horse Deaths: projected 259

Total Horse Deaths on Racecourses: 96

National Hunt Season 2002/2003

Total Horse Deaths: projected 205

Total Horse Deaths on Racecourses: 76

National Hunt Season 2003/2004

Total Horse Deaths: projected 227

Total Horse Deaths on Racecourses: 84

All Years Total Horse Deaths On Racecourses: 481.

This total includes NH 1999/2000 deaths, as revealed in the Animal Aid report, *Running For Their Lives*.

N.B. The projected figures in the tables above are arrived at as follows: An Animal Aid survey of the 1999/2000 NH season and of the 2000 Flat season found a total on and off course death tally of 374. Thirty per cent of these casualties arose on the courses themselves, while the remainder died or were killed subsequently during those seasons as a result of training injuries, or because the animals were considered to be of no further commercial utility. Because on course deaths have been consistent since 2000, we can reasonably assume that the off course death tally also remained consistent. By these calculations, the projected total death figures, as shown above, are deduced. Equally, we also arrive at an annual average total death figure of 375. This annual total is reliable, despite some of the data above suggesting a lower yearly total. The reduced figures above result from the foot and mouth outbreak and from the extensive number of waterlogged courses that severely curtailed racing during 2001.



Names and Number of Horses Killed

Race Horse Deaths Flat/AW Season 2000

Combining Horses That Died On And Off The Racecourse

Horse	Age/Sex	*Killed On Racecourse	Horse	Age/Sex	*Killed On Racecourse
1 Adirpour	6g		65 Lite A Candle	3f	
2 Agua Caballo	3g		66 Love Lady	2f	
3 Aiwin	3c		67 Lullaby	3f	
4 Albaneck	2g		68 Makati	6g	
5 Alfini	3c	*	69 Margarita	2f	
6 All Mine	3g		70 Markellis	4g	*
7 Alright Pops	4f		71 Marshall St. Cyr	3g	
8 Aristocrat	3c		72 Mephitis	6g	
9 At Large	6g		73 Midyan Blue	10g	*
10 Baillieston	2g		74 Mukhles	7g	*
11 Big Al	4g		75 Natural Eight	6g	
12 Bonifacio	4c		76 Neervam Star	2c	
13 Boulder	3c		77 Netta Rufina	5g	
14 Bread Winner	4g		78 Ollie's Chuckle	5g	
15 Capercaillie	5g		79 Onka Paringa	2f	*
16 Centre Stage	3c		80 Oregon Flight	2f	
17 Central Coast	4c	*	81 Palacegate Jack	9g	
18 Changing Scene	2c		82 Peaceful Promise	3c	
19 Cheek To Cheek	6m		83 Pearl Button	2f	
20 Chemcast	7g		84 Penny Lass	4f	
21 Chist	5h		85 Perpetual Pride	3c	
22 Civil Liberty	7g	*	86 Perugino Pearl	3f	
23 Chocolate Ice	7g		87 Pine Ridge Lad	10g	
24 Condor Hero	3g		88 Pips Star	3f	
25 Da Boss	5g		89 Polo Venture	5g	
26 Dark Menace	8g		90 Portland	3c	*
27 Daunting Assembly	5m		91 Present Laughter	4c	
28 Days Of Thunder	12g		92 Prince Danzig	8g	
29 Desert North	3g		93 Princess Kali	4f	
30 Diamond Murphy	2f		94 Principle Account	3c	
31 Distinctly Chic	2f	*	95 Royal Fusilier	4g	*
32 Dive	3g		96 Rule Of Thumb	3g	
33 Dobaandi	4g		97 Running Bear	6g	
34 Double Banger	3c		98 Russian Music	7g	*
35 Double Rush	8g		99 Saligo	5m	
36 Double Vision	3c		100 Sand Bankes	2c	
37 Eastern Rainbow	4g		101 Scotty Guest	3c	
38 Eastwell Minstrel	5g		102 Service Star	3c	
39 Eshtiaal	6h		103 Shapour	3c	
40 Eurolink Moussaka	5g		104 Shotley Marie	5m	
41 Fast Buck	2c		105 Sign the Truce	2c	
42 Flying Officer	4g	*	106 Space Race	6g	*
43 Forest Friendly	3f		107 Spartan Heartbeat	7g	
44 Frisky Fox	6m		108 Spring Anchor	5g	
45 Full Circuit	4c		109 Sticks	2f	*
46 Get It Sorted	2f		110 Striding King	5g	*
47 Gibney's Flyer	2f		111 Sunset Shore	2f	*
48 Groesfaen	4f		112 Supreme Maimoon	6h	
49 Gutteridge	10g		113 Sure To Dream	7m	*
50 Happy Hooligan	3c		114 Swagger	4g	
51 Heritage Park	3g		115 Tambourinaire	3g	
52 High Carry	5m		116 Tiler	8g	
53 Importune	2c		117 Toposhees	3c	
54 Inca Star	3c		118 To The Roof	8g	*
55 Inch Pincher	3c		119 Touch The Sky	3f	*
56 Insightful	3g	*	120 Vanborough Lad	11g	*
57 I Recall	9g		121 Vannucci	3g	
58 Jonathan's Girl	5m		122 Venture Capitalist	11g	*
59 Katiymann	8g	*	123 Warrior King	6g	
60 Keen Dancer	6g		124 Wild Flight	3g	
61 King Of Truth	2g		125 Wild Thing	4c	*
62 Krantor	3c		126 Woody's Boy	6g	
63 Lanntansa	3c		127 Wurzel	3c	
64 Legal Issue	8h				

* 23 Total

Race Horse Deaths Flat/AW Season 2001

Killed On Racecourse Data Only – Total Season Deaths Unavailable

Horse	Age/Sex	Horse	Age/Sex
1 Blue Forest	3c	11 Jackerin	6g
2 Bodfari Anna	5m	12 Lord Harley	3g
3 Brainwave	3f	13 Misty Boy	4g
4 Court Express	7g	14 Out Of Sight	7g
5 Daramsan	4g	15 Secret Drop	4f
6 Flavia	3f	16 Shontaine	8g
7 Force Of Destiny	3g	17 Solar Colours	3g
8 Game Pie	3f	18 Vicious Circle	7g
9 Gold Blade	12g	19 York White	3f
10 Hoh Gem	5g		

Race Horse Deaths Flat/AW Season 2002

Killed On Racecourse Data Only – Total Season Deaths Unavailable

Horse	Age/Sex	Horse	Age/Sex
1 Applehayes	3f	14 Mental Pressure	9g
2 Black Weasel	7g	15 Mind The Silver	5g
3 Coshocton	3c	16 Premier Baron	7g
4 Dandilum	5g	17 Robandela	5g
5 Ellendune Girl	4f	18 Sandown Aratino	3g
6 Euro News	4c	19 Sarangani	6g
7 Givre	4g	20 Seignosse	4g
8 Glowing	6m	21 Thundering Falls	3f
9 Happy Guest	3g	22 Time Machine	3g
10 Honduras	3f	23 Tinsel Moon	5m
11 Houston Park	3c	24 Welcome Gift	6g
12 In Disguise	3g	25 Zartzella	3f
13 Landrfun	7g		

Race Horse Deaths Flat/AW Season 2003

Killed On Racecourse Data Only – Total Season Deaths Unavailable

Horse	Age/Sex	Horse	Age/Sex
1 Akebono	7g	10 Look First	5g
2 Athenian	4g	11 Princess Tavery	2f
3 Beauchamp Rose	3f	12 Romantic Liason	3f
4 Bedazzled	3f	13 Royal Insult	5g
5 Curlew River	3g	14 Sun Of Speed	2c
6 Effervesce	5m	15 Tzar	4g
7 Ginger Jack	3g	16 Warm Hill	2c
8 Golden Brief	5g	17 Weet A Mo	3g
9 Guns At Dawn	2c	18 Ynysmon	5g

Race Horse Deaths National Hunt NH Season 2000/2001

Racecourses highlighted in **bold** are where more than one horse was killed on the same day or at the same meeting

Horse	Discipline	Dist./Ob.	Course	Date	Cause/Death	
Jockey	Trainer	No.Runners	Going	A-W / OR	Pos. in race	
1 Tappeto	NovChase D	2.5m / 16 fnc	NewtonAbb.	1-Jun-00	Fell 5th	Fatal Fall
W Marston	DJ Wintle	7 ran	Good (G/S)	8-11-0 / -	Prominent	Fatal Fall
2 Flying Gilda	NovChase E	2m / 11 fncs	Folkestone	7-Jun-00	UR 3rd	?
JA McCarthy	Lady Herries	6 ran	Good	5-10-8 / -	?	?
3 Cherokee Charlie	NovHurdle E	2m / 8 hdls	Worcester	11-Jun-00	Fell Last	Destroyed
J Tizzard	NR Mitchell	20 ran	G/F (Good)	6-10-7 / 80	Weakening	Destroyed
4 Captain Dee Cee	Hurdle B	2m / 8 hdls	Worcester	11-Jun-00	Behind	Broke Leg
TJ Murphy	S Sherwood	14 ran	G/F (Good)	6-11-3 / 125	Inj. On Line	Broke Leg
5 Combe Springs	Hurdle G	2m / 8 hdls	MarketRasen	24-Jun-00	Finished 5th	Broke Leg
N Smith	R Craggs	12 ran	Good / Firm	5-12-0 / 90	Collapsed	Heart Attack
6 Fortynineplus	Hurdle F	3m / 10 hdls	NewtonAbb.	1-Jul-00	Won	Heart Attack
P Flynn	CR Barwell	10 ran	G/F (Good)	7-10-11 / 80	Collapsed	Heart Attack
7 Curragh Peter	Chase F	2.5m / 15 fnc	Woverhamp.	7-Jul-00	Won	Heart Attack
S Wynne	P Bickerton	6 ran	G/S (Soft)	13-10-1 / 64	Fell 4th	Fatal Fall
8 Fortynineplus	Chase F	2m / 12 fncs	NewtonAbb.	17-Jul-00	Prominent	Fatal Fall
J Mogford	DJ Wintle	8 ran	Good / Firm	9-11-11 / 98	Fell after 7th	Broke Leg
9 Choir Belle	NovHurdle E	2.5m / 10 hdl	Sedgefield	20-Jul-00	Leading	Broke Leg
G Lake	C Grant	8 ran	Firm	5-11-2 / 96	Fell 7th	Fatal Fall
10 Ivorian	Hurdle E	2.5m / 11hdl	Bangor	4-Aug-00	Prominent	Fatal Fall
JP McNamara	CN Kellett	7 ran	Good	5-11-7 / 108	Mistk14th PU	Broke Leg
11 Castle Red	Chase F	3.5m / 20 fnc	NewtonAbb.	15-Aug-00	Prominent	Broke Leg
Dr P Pritchard	Dr Pritchard	6 ran	Good (G/S)	9-11-3 / 67	PU after 4th	Broke Leg
12 Polo Venture	Hurdle G	2m / 8 Hdls	Perth	23-Aug-00	Prominent	Broke Leg
B Harding	M Hammond	7 ran	Good (G/F)	5-11-2 / 97	Fell 5th	Fatal Fall
13 Our Joe	Hurdle G	3m / 11 hdls	Cartmel	26-Aug-00	Held Up	Fatal Fall
MA Fitzgerald	JJ O'Neill	11 ran	Good (G/S)	6-11-0 / 76	Lame	Sev. Tendon
14 Eastwell Minstrel	NovHurdle E	2.5m / 10 hdl	Sedgefield	1-Sep-00	Finished 2nd	Sev. Tendon
J Crowley	A Lockwood	6 ran	Good	5-10-12 / 67	PU after 11th	?
15 Doctor Rose	NovHurdle E	3m / 12 hdls	Worcester	8-Sep-00	Prominent	?
JR Kavanagh	RH Buckler	11 ran	Good / Firm	6-10-6 / 72	PU after 7th	?
16 Well Appointed	Hurdle D	2.5m / 10 hdl	Sedgefield	12-Sep-00	Tailed Off	?
B Gibson	Mactaggart	9 ran	Good	11-10-5 / 101	Inj. after Line	Broke Leg
17 Royal Mascot	NH Flat H	1m 5.5f	MarketRasen	23-Sep-00	Finished 9th	Broke Leg
L Corcoran	BG Powell	11 ran	G/F (Good)	5-10-13 / -	PU after 2nd	?
18 Makati	NovHurdle E	3m / 12 hdls	MarketRasen	1-Oct-00	Mid-Division	?
W Marston	JGM O'Shea	7 ran	Good (G/F)	6-10-12 / -	Blnd 1st PU	?
19 Eshtial	Hurdle D	2m / 9 hdls	Ludlow	19-Oct-00	Prominent	Heart Attack
M Batchelor	K Marks	10 ran	G/F (Good)	6-10-8 / 99	Collapsed7th	Heart Attack
20 Impetus	NovHurdle E	2.5m / 9 hdl	Southwell	21-Oct-00	Prominent	Heart Attack
L Cooper	JJ O'Neill	14 ran	Soft	6-10-9 / 94	Fell 17th	Destroyed
21 Dom Beltrano	Chase E	3m / 19 fncs	Cheltenham	24-Oct-00	Challenging	Destroyed
Mr F Windsor Clive	N Twiston-D	10 ran	Good (G/F)	8-10-12 / 107	Fell 2nd	Broke Leg
22 Shopaholic	Chase 0-110	3m / 17fncs	Leicester	13-Nov-00	?	Broke Leg
H Oliver	S Sherwood	7 ran	Good / Soft	7-11-8 / 106	PU bef 3 out	?
23 Northday	Chase	2.5m / ?fncs	Down Royal	18-Nov-00	Tailed Off	?
DJ Casey	D Wachman	5 ran	Good / Yeild	5-10-13 / -	Fell 16th	Destroyed
24 Swanbister	Chase E	3.5m / 24 fnc	Ayr	4-Dec-00	Leading	Destroyed
A Dobbin	L Lungo	8 ran	Soft (Heavy)	10-12-0 / 105	Fell 19th	Fatal Fall
25 Anna Karnali	NovChase C	3m / 21fncs	Cheltenham	8-Dec-00	Challenging	Fatal Injury
AP McCoy	MC Pipe	6 ran	Soft	7-11-1 / -	PU after10th	Fatal Injury
26 Star Of Dungannon	NovChase E	2m / 12 fncs	Fakenham	18-Dec-00	Prominent	Fatal Fall
N Williamson	V Williams	5 ran	G/S (Soft)	7-11-1 / -	HmpdFell14th	Broke Leg
27 Bright Hour Lad	NovChase E	3m / 19 fncs	MarketRasen	26-Dec-00	Prominent	Fatal Fall
JA McCarthy	PR Webber	10 ran	Soft (Heavy)	6-11-2 / 91	HmpdFell13th	Fatal Fall
28 Papo Kharisma	Chase A	3.5m / 22 fnc	Chepstow	27-Dec-00	Prominent	Fatal Fall
R Bellamy	PJ Hobbs	19 ran	Soft (Heavy)	10-10-5 / 129	PU after15th	?
29 Hit The Canvas	NovChase E	3m / 19 fncs	Ayr	2-Jan-01	Weakening	?
P Niven	M Reveley	6 ran	Soft (G/S)	10-11-0 / 85	Blnd. Fell 5th	Broke Leg
30 Royal Pot Black	Chase G	2.5m / 15 fnc	Folkestone	2-Jan-01	Held Up	Broke Leg
Dr P Pritchard	Dr Pritchard	9 ran	Soft	10-10-2 / 67	Fell 8th	Fatal Fall
31 N'insitez Pas	NovChase D	3m / 17 fncs	Haydock	6-Jan-01	Prominent	Fatal Fall
B Storey	A Parker	6 ran	Soft (Heavy)	7-11-9 / 105	PU after 5th	Broke Pelvis
32 Silent Warning	NovHurdle D	2m / 8 hdls	Kempton	10-Jan-01	Prominent	Broke Pelvis
MA Fitzgerald	Henderson	18 ran	Soft	6-10-12 / -	UR 12th	?
33 Kaygebe	NovChase C	2.5m / 17 fnc	Warwick	13-Jan-01	Prominent	?
JP Byrne	PR Webber	10 ran	Soft	8-10-11 / 107	Fell 4th	Fatal Fall
34 Master Rastus	Hurdle B	3m / 11 hdls	Warwick	13-Jan-01	Prominent	Fatal Fall
A Thornton	SD Willaims	18 ran	Soft	8-11-2 / 135	Fell 1f out	Broke Leg
35 Conlor	NH Flat H	2m	Musselburgh	14-Feb-01	Weakening	Broke Leg
L Cooper	FP Murtagh	14 ran	Good (G/S)	4-10-1 / -	Finish Lame	Destroyed
36 Joli Flyers	Hurdle G	2m / 9 hdls	Taunton	15-Feb-01	Won	Destroyed
Mr A Honeyball	RJ Hodges	12 ran	Heavy (Soft)	7-10-8 / 93	AlwaysRear	?
37 Park Royal	Hurdle G	2m / 9hdls	Fakenham	16-Feb-01	Finished11th	?
TJ Murphy	P Butler	15 ran	Soft	6-10-11 / 68		

Race Horse Deaths National Hunt NH Season 2000/2001 cont

38 High Topper	NovHurdle E	2.5m / 10hdl	Doncaster	21-Feb-01	Fell 3rd	Fatal Fall
R Greene	Brookhouse	14 ran	Good	4-10-12 / -	?	Fatal Fall
39 Golden Eagle	NovChase E	2.5m / 17 fnc	Ludlow	21-Feb-01	Fell 14th	Destroyed
R Widdiger	PR Chamings	10 ran	Good	9-11-2 / -	Mid-Division	Destroyed
40 Cavalero	Chase H	3.5m / 20 fnc	Warwick	23-Feb-01	Fell 15th	Fatal Fall
Mr A Charles-Jones	HJ Manners	12 ran	Soft	12-12-8 / -	Challenging	Fatal Fall
41 Young Kenny	Chase A	3.5m / 22 fnc	Haydock	24-Feb-01	PU after12th	Lame
R Garrity	P Beaumont	18 ran	Soft	10-11-10/150	Prominent	Lame
42 Corporation Pop	NovHurdle D	2.5m / 12 hdl	Uttoxeter	24-Feb-01	PU after10th	Pelvic Injury
G Lee	J Jefferson	6 ran	Soft (Heavy)	7-11-7 / -	Leading	Pelvic Injury
43 Dixie River	Chase F	2.5m / 15 fnc	Leicester	27-Feb-01	PU after14th	Br. Hind Leg
A Thornton	RH Alner	9 ran	Soft	7-11-6 / 96	Collapsed	Br. Hind Leg
44 Bucksid	NovChase E	2.5m / 16 fnc	Huntingdon	14-Mar-01	Collapsed	Br. Hind Leg
MA Fitzgerald	Henderson	10 ran	Soft	9-11-2 / -	Finished 5th	Heart Attack
45 Tundra Spring	NH Flat H	2m 1f	Musselburgh	3-Apr-01	PU 3f Out	Heart Attack
P Niven	M Reveley	13 ran	G/F (Good)	4-10-12 / -	Mid-Division	Broke Leg
46 The Outback Way	Chase B	2.5m / 18 fnc	Aintree GN	6-Apr-01	HpUR/BD7th	Broke Leg
N Williamson	V Williams	24 ran	Soft (Heavy)	11-12-0 / 147	Prominent	?
47 Carraignamon	NovChase D	2m / 12 fncs	Huntingdon	16-Apr-01	PU after10th	?
R Thornton	KC Bailey	7 ran	Soft	8-10-8 / 92	Behind	?
48 Sporting Way	NovHurdle D	2.5m / 10 hdl	Taunton	20-Apr-01	PU after 5th	?
S Curran	KM George	12 ran	Good / Firm	6-10-5 / 80	Leading	Broke Leg
49 Cashew Crisis	NH Flat H	2m 1f	Taunton	20-Apr-01	PU after 7 f	Broke Leg
Mr A Honeyball	PF Nicholls	10 ran	Good / Firm	6-10-11 / -	Prominent	Broke Leg

NB. The Season 2000/2001 was severely affected by the foot and mouth disease outbreak. Many meetings in the National Hunt Racing Calendar were cancelled including the Cheltenham Festival. This accounts for the drop in death figures. However, in relation to the amount of days racing held, the toll was consistent with other seasons.

© BRIAN WOODY



Race Horse Deaths National Hunt NH Season 2001/2002

Racecourses highlighted in **bold** are where more than one horse was killed on the same day or at the same meeting

Horse	Trainer	Dist./Ob.	Course	Date	Cause of Death	Result
Jockey		No. Runners	Going	A-W / OR	in race	
1 Derrymore Mist	Chase F	3.5m / 17fnc	Sedgefield	4-May-01	Fell 11th	
J Tizzard	PF Nicholls	13 ran	Good	9-12-0 / 106	Prominent	Fatal Fall
2 Bring Sweets	Hurdle A	2m / 8 hdl	Haydock	5-May-01	Fell 7th	
VT Keane	B Ellison	23 ran	Good	5-11-5 / 141	Leading	Died Night
3 Spontaneity	Hurdle G	2m / 9 hdl	Hereford	5-May-01	PU after 4th	
Anthony Evans	PD Evans	18 ran	Good (G/F)	5-10-12 / 88	Mid-Division	?
4 Master Rocky	Chase H	3m / 18 fnc	Wetherby	9-May-01	Fell 11th	
Mr M Clayton	WT Reed	24 ran	Good (G/F)	9-11-7 / -	Behind	Fatal Fall
5 Have A Break	Chase H	3m / 18 fnc	Stratford	14-May-01	BD 9th	
Mr M Wall	J White	16 ran	Good / Firm	6-11-7 / -	Prominent	Fatal Injury
6 Miss Alicia	Hurdle E	2m / 8 hdl	Folkestone	23-May-01	PU after 7th	
T Scudamore	N Twiston-D	13 ran	Good / Firm	4-10-2 / -	Weakening	Broke Leg
7 Stately Home	Chase D	2.5m / 15fnc	Folkestone	23-May-01	Fell 13th	
AP McCoy	P Bowen	4 ran	Good / Firm	10-11-11 / 117	Last	Fatal Fall
8 Zolaran	NH Flat H	2m 1.5f	Folkestone	23-May-01	Fell 2f Out	
R Studholme	M Bradstock	18 ran	Good / Firm	5-10-10 / -	Prominent	Broke Leg
9 Second Helping	Chase F	2m / 13 fnc	MarketRasen	26-May-01	Fell 9th	
R Forristal	JR Best	16 ran	Good	7-11-4 / 93	Prominent	Fatal Fall
10 Polar Peer	Chase E	2.5m / 16 fnc	Huntingdon	28-May-01	PU after 14th	
N Fahilly	CJ Mann	5 ran	G/F (Firm)	7-11-0 / -	Leading	Br. Off Hind
11 Our Ghillie	Chase D	3.5m / 21fnc	Stratford	1-Jun-01	Fell 4th	
D Gallagher	PR Webber	12 ran	G/F (Good)	8-10-0 / 90	Behind	Fatal Fall
12 Pekan Heights	Hurdle C	2m / 9 hdl	Stratford	2-Jun-01	Fell Last	
Anthony Evans	PD Evans	14 ran	Good / Firm	5-10-11 / 116	Behind	Fatal Fall
13 Royal Then	Hurdle F	2.5m / 10 hdl	Stratford	2-Jun-01	Fell Last	
B Hitchcott	J Neville	16 ran	Good / Firm	8-10-13 / 94	Weakening	Fatal Fall
14 Little Notice	NovHurdle F	3m / 12 hdl	Worcester	9-Jun-01	Fell 6th	
R Johnson	HD Daly	17 ran	Good	10-11-10 / 94	Mid-Division	Fatal Fall
15 Chase Night	NovHurdle D	2m / 8 hdl	Hexham	22-Jun-01	PU after 4th	
J Jardine	DW Whillans	9 ran	Good (G/F)	8-10-9 / -	?	Broke Leg
16 Ahraydoubleyou	NovChase D	2.5m / 16fnc	Stratford	1-Jul-01	Fell Last	
D Elsworth	Mrs S Smith	10 ran	Good / Firm	8-10-11 / 96	Challenged	Broke Leg
17 Lutine Bell	NovHurdle E	2m / 9 hdl	Stratford	1-Jul-01	Fell 5th	
A Maguire	Collingridge	16 ran	Good / Firm	6-10-0 / 81	Leading	Fatal Fall
18 General Gleeson	NovHurdle F	3m / 12 hdl	Worcester	11-Jul-01	Collapsed	
O McPhail	JF Panvert	17 ran	Good (G/F)	9-10-7 / 81	Finished 3rd	Heart Attack
19 Eagle Canyon	Hurdle G	2.5m / 10 hdl	Worcester	18-Jul-01	PU after 4th	
C Llewellyn	DM Lloyd	15 ran	Soft	8-11-0 / 75	Prominent	Broke Leg
20 Albright	NH Flat H	2m 1f	Sedgefield	26-Jul-01	PU/Collapsed	
AP McCoy	C Thornton	6 ran	G/F (Firm)	5-10-11 / -	Reached 6f	Heart Attack
21 Chergale	Chase F	3m / 18 fnc	Stratford	11-Aug-01	PU after 3rd	
R Thornton	MJ Ryan	11 ran	Good (G/S)	9-10-0 / 75	Prominent	Broke Leg
22 Southampton	Chase F	3m / 18 fnc	Stratford	11-Aug-01	Fell 17th	
F Keniry	GB Balding	11 ran	Good (G/S)	11-10-1 / 79	Behind	Fatal Fall
23 Raymond's Lad	NovChase E	3m / 19 fnc	Southwell	13-Aug-01	Distressed	
J Tizzard	PF Nicholls	9 ran	Good / Firm	10-11-6 / 116	Won	Died ?
24 Mr Bombastique	Hurdle D	3m / 10 hdl	NewtonAbb.	14-Aug-01	Lame 7th	
AP McCoy	P Bowen	8 ran	G/F (Good)	7-10-4 / 95	Prominent	?
25 Atlantic Charter	NovHurdle E	2.5m / 10 hdl	Perth	18-Aug-01	Struck-Self	
A Dobbin	JJ O'Neill	7 ran	Good (G/F)	5-10-12 / -	Won	Sev. Tendon
26 Mr Bruno	NovHurdle E	3m / 12 hdl	Perth	18-Aug-01	PU/Collapsed	
J Crowley	MA Barnes	9 ran	Good (G/F)	8-10-5 / 72	Tailed Off	Heart Attack
27 Barton Heights	Hurdle F	2m / 7 hdl	NewtonAbb.	27-Aug-01	Fell 1st	
PJ Brennan	MissM Bragg	15 ran	Good / Firm	9-9-9 / 80	?	Fatal fall
28 Frontier Flight	Hurdle F	2.5m / 11 hdl	Southwell	27-Aug-01	PU after 9th	
J Bosley	PW Haitt	6 ran	Good / Firm	11-9-10 / 76	WellPlaced?	?
29 Lynton Lad	NovHurdle E	2.5m / 10 hdl	MarketRasen	1-Sep-01	Behind	Broke Leg
S Fox	MJ Gingell	16 ran	G/F (Firm)	9-10-12 / -	PU after 5th	
30 Allten Grazed	NovHurdle E	2m / 8 hdl	Sedgefield	7-Sep-01	PU after 5th	
C McCormack	C Grant	10 ran	Good / Firm	5-10-7 / -	?	
31 Ascot Boy	NovHurdle E	2.5m / 9 hdl	Worcester	14-Sep-01	Blnd. PU 4th	
X Aizpuru	Graeme Roe	9 ran	G/F (Good)	6-10-12 / -	Held Up	Broke Leg
32 Common Man	Hurdle E	2.5m / 10 hdl	MarketRasen	29-Sep-01	Collapsed	
G Lake	O Brennan	12 ran	Soft	8-11-3 / 109	Finished 9th	Heart Attack
33 Caledonian Express	Hurdle G	2.5m / 12 hdl	Plumpton	29-Sep-01	Fell 4th	
R Forristal	JR Best	17 ran	G/S (Good)	6-10-7 / 76	?	Fatal Fall
34 Mountain Flyer	NovChase E	2m / 12 fnc	Plumpton	29-Sep-01	Fell 10th	
R Greene	JW Mullins	7 ran	G/S (Good)	6-11-1 / 87	Behind	Broke Leg
35 Major Lando	Hurdle B	2m / 8 hdl	Chepstow	6-Oct-01	Br.LegFin.+	
AP McCoy	MC Pipe	9 ran	Good	4-11-1 / 119	Finished 2nd	Broke Leg
36 Doctor Goddard	NovChase C	2.5m / 16 fnc	Chepstow	6-Oct-01	NovChase C	
R Johnson	PJ Hobbs	8 ran	Good	6-11-0 / -	Fell 11th	Fatal Fall
37 Solitary	NovHurdle E	3m / 12 hdl	MarketRasen	7-Oct-01	Weakening	Fatal Fall
J Tizzard	JG Given	11 ran	G/S (Good)	4-10-11 / -	StruckSelfPU	Behind

Race Horse Deaths National Hunt NH Season 2001/2002 cont

38 Moonlight Invader	NovChase E	2.5m / 15 fnc	Huntingdon	12-Oct-01	Fell 5th	
R Wakley	JG Portman	9 ran	Good	7-10-0 / 76	Held Up	Fatal Fall
39 Final Settlement	Hurdle C	2m / 8 hdl	Huntingdon	12-Oct-01	PU after 5th	
AP McCoy	JR Jenkins	5 ran	Good	6-11-5 / 117	Prominent	Fatal Injury
40 Hariymi	Hurdle C	2m / 8 hdl	Huntingdon	12-Oct-01	PU after 5th	
B Fenton	R Rowe	5 ran	Good	6-11-7 / 119	Prominent	Fatal Injury
41 Ilico li	NovChase D	2m / 12 fnc	Exeter	23-Oct-01	Fell 4th	
R Johnson	PJ Hobbs	7 ran	Good	5-11-0 / -	Prominent	Fatal Fall
42 Polar Star	Hurdle D	2m / 9 hdl	Ludlow	25-Oct-01	Fell 7th	
AP McCoy	MC Pipe	10 ran	G/F (Good)	4-11-2 / 97	Prominent	Broke Leg
43 Relaxation	Chase E	3m / 19 fnc	Cheltenham	30-Oct-01	Fell 18th	
Mr R Burton	HD Daly	10 ran	Good (G/F)	9-12-0 / 123	Staying On	Fatal Fall
44 Minioso	Chase D	3m / 17 fnc	Kelso	3-Nov-01	Fell 15th	
D Elsworth	Mrs S Smith	8 ran	Good	7-10-7 / 100	Prominent	Fatal Fall
45 Samba Sharply	NovHurdle F	2m / 9 hdl	Plumpton	5-Nov-01	PU after 6th	
C Llewellyn	RM Flower	16 ran	G/S (Good)	10-11-0 / 91	Weakening	?
46 Leila	NovChase D	3.5m / 18 fnc	Plumpton	5-Nov-01	PU after 4th	
L Cummins	EC Lavelle	8 ran	G/S (Good)	6-10-0 / 81	?	?
47 Son Gancho	Hurdle G	2m / 8 hdl	NewtonAbb.	7-Nov-01	Fell Last	
Mr N Harris	Miss D Cole	18 ran	Soft	5-10-12 / 66	Prominent	Fatal Fall
48 Thanks Keith	NovChase C	3m / 17 fnc	Haydock	18-Nov-01	PU after 8th	
AS Smith	FP Murtagh	6 ran	Good	6-11-9 / 104	Prominent	?
49 Blue Music	Hurdle C	2m / 9 hdl	Ascot	23-Nov-01	Fell 3rd	
R Wakley	RG Frost	8 ran	Good (G/F)	6-11-4 / 118	Leading vsp	Fatal Fall
50 Kaizen	NH Flat H	2m 1f	Aintree	25-Nov-01	Collapsed	
G Lee	A Turnell	21 ran	Good / Soft	4-11-4 / -	Finished 8th	Heart Attack
51 Hal Hoo Yaroom	NovChase D	2.5m / 16 fnc	Fakenham	25-Nov-01	Fell 7th	
R Thornton	JR Jenkins	6 ran	Soft	8-10-12 / -	Prominent	Fatal Fall
52 Smackwater Jack	NovChase E	3m / 19 fnc	Hereford	4-Dec-01	Collapsed	
JP McNamara	RH Alner	6 ran	Soft	8-10-12 / -	Finished 2nd	Heart Attack
53 Robzelda	NovHurdle D	2m / 8 hdl	Hexham	12-Dec-01	Collapsed	
G Lee	KA Ryan	12 ran	Soft (Heavy)	5-10-12 / -	Finished 3rd	Heart Attack
54 Ice	NovHurdle E	2m / 9 hdl	Bangor	19-Dec-01	Fell 7th	
L Cooper	S Kettlewell	12 ran	Good / Soft	5-11-9 / 110	Prominent	Fatal Fall
55 Pedro Pete	Hurdle B	2m / 9 hdl	Ascot	22-Dec-01	Fract. Pelvis	
M Foley	Henderson	16 ran	Good (G/S)	4-10-0 / 126	Finished 12th	PD Next Day
56 Earls Seat	NovHurdle D	2.5m / 10 hdl	Haydock	28-Dec-01	Fell 2nd	
M Bradburne	JJA Charlton	15 ran	Heavy (Soft)	6-10-12 / -	Held Up	
57 Joking Aside	Hurdle E	2m / 9 hdl	Fakenham	7-Jan-02	PU after 8th	Fatal Fall
Miss V Haigh	MissV Haigh	10 ran	Soft	10-11-4 / 95	Mid-Division	?
58 Gold Statuette	NovHurdle E	2m / 8 hdl	Newbury	9-Jan-02	Fell Last	
R Thornton	T McGovern	17 ran	Good / Soft	4-10-12 / -	Mid-Division	Fatal Fall
59 Raise A Prince	NovHurdle E	2m / 8 hdl	Huntingdon	16-Jan-02	UR 2nd	
P Hide	SPC Woods	17 ran	G/S (Soft)	9-11-2 / 113	Leading	Broke Leg
60 Bobstown	NH Flat H	2m	Ludlow	17-Jan-02	PU 8f	
L Barber	F Murphy	18 ran	Good (G/S)	5-10-13 / -	Weakening	Broke Leg
61 Beggars Balm	NH Flat H	2m 1f	Taunton	17-Jan-02	PU 1f out	
D Pebody	PR Webber	14 ran	Soft	6-11-0 / -	Tailed Off	?
62 Phil Sanders	NovChase C	3m / 19 fnc	Kempton	19-Jan-02	Fell 12th	
B Hitchcott	B Sanders	5 ran	Good (G/S)	8-11-0 / -	Behind	Fatal Fall
63 Kurakka	Chase B	2.5m / 17 fnc	Kempton	19-Jan-02	Fell Last	
R Thornton	Noel Chance	7 ran	Good (G/S)	9-10-5 / 115	Prominent	Broke Neck
64 Sunshade	Hurdle D	2.5m / 10 hdl	Wetherby	21-Jan-02	PU Collapsed	
T Doyle	G Swinbank	11 ran	Good / Soft	6-10-11 / 94	Behind	Heart Attack
65 Little Pippin	Hurdle D	2.5m / 9 hdl	Fontwell	22-Jan-02	Fell 8th	
F Keniry	GB Balding	8 ran	Soft	6-11-2 / 111	Challenged	
66 Renacyn	NovHurdle E	2.5m / 8 hdl	Sedgefield	23-Jan-02	3rd Fence ?	Fatal Fall
B Harding	FP Murtagh	11 ran	Soft (Heavy)	7-11-2 / -	?	Broke Leg
67 Red Imp	Chase D	2m / 12 fnc	MarketRasen	5-Feb-02	Fell 2nd	
Richard Guest	NB Mason	8 ran	Soft (Heavy)	6-11-8 / 109	?	Fatal Fall
68 Cash Account	NovChase H	3m / 15 fnc	Huntingdon	7-Feb-02	Collapsed	
Mr P Hewitt	R Harvey	9 ran	Soft (Heavy)	9-11-7 / -	Held Up	Heart Attack
69 Supreme Bramble	NovHurdle E	2.5m / 11 hdl	Newcastle	16-Feb-02	Fell 10th	
A Ross	M Reveley	22 ran	Soft (Heavy)	6-10-11 / -	PU Run-in	Fatal Fall
70 Firebird Girl	Hurdle E	2m / 6 hdl	Sedgefield	19-Feb-02	PU Run-in	
Richard Guest	DM Forster	15 ran	Soft.Hy.runin	8-11-0 / 91	In 3rd Place	Fatal Injury
71 Trump Apeal	NovHurdle E	2m / 6 hdl	Warwick	22-Feb-02	Fell 3rd	
N Fahilly	JG Portman	19 ran	Heavy	4-10-12 / -	Held Up	Fatal Fall
72 Artist's Model	NovChase D	2.5m / 17 fnc	Ludlow	28-Feb-02	Fell 15th	
M Bradburne	HD Daly	8 ran	G/S (Soft)	7-10-10 / -	Behind	Fatal Fall
73 Misty Path	NH Flat H	2m	Ludlow	28-Feb-02	PU 3f Out	
G Lee	D McCain	16 ran	Good (G/S)	6-11-2 / -	Mid-Division	?
74 Pat's Gesture	NovChase C	2m / 11 fnc	Sedgefield	5-Mar-02	Fell 7th	
JP Byrne	F Murphy	8 ran	Soft (Heavy)	8-10-11 / 85	Behind	Fatal Fall
75 Pur Tresor	Hurdle F	2.5m / 9 hdl	Catterick	6-Mar-02	Fell 5th	
R Garrity	GM Moore	18 ran	G/S (Good)	5-11-13 / 95	Behind	Fatal Fall
76 Knight Nite	NovChase D	3m / 16 fnc	Towcester	7-Mar-02	Fell 8th	
L Cooper	JJ O'Neill	8 ran	Soft (G/S)	6-11-0 / -	Held Up	Fatal Fall

Race Horse Deaths National Hunt NH Season 2001/2002 *cont*

77	Leonato J Goldstein	NovHurdle E 10 ran	3m / 11hds 10 ran	Warwick G/S (Soft)	9-Mar-02 10-11-1 / -	?	Finished 7th	Broke Leg
78	Valiramix AP McCoy	Hurdle A 15 ran	2m / 8 hds 15 ran	Cheltenham. G/S (Good)	12-Mar-02 6-12-0 / 167		Stb.after6th	Br. Shoulder
79	Rouble L Aspell	Hurdle A 27 ran	2.5m / 10 hdl 27 ran	Cheltenham. Good / Soft	13-Mar-02 6-11-7 / -		Slip?after3rd	Broke Leg
80	Tapping Tam Mr R Biddlecombe	NovChase B Twiston-D.	4m / 24 fncs 26 ran	Cheltenham. Good / Soft	13-Mar-02 6-10-7 / 80		PU after 17th	?
81	Dancing Shiva N Williamson	Hurdle D Simon Earle	3m / 11 hds 16 ran	Exeter Good (G/S)	28-Mar-02 7-10-0 / 95		PU lame 5th	?
82	Too Cool P Aspell	NovHurdle E 15 ran	2.5m / 11 hdl 15 ran	Carlisle Good / Soft	30-Mar-02 6-9-9 / 76		PU after 7th	Struck-Into
83	Orsuno N Williamson	Hurdle C V Williams	3m / 12 hds 6 ran	Haydock Good	30-Mar-02 8-10-13 / 118		PU after 9th	Sev. Tendon
84	Single Currency Mr R Lucey-Butler	NovChase E P Butler	2m / 11fncs 8 ran	Plumpton GoodG/FG/S	30-Mar-02 6-10-7 / -		Fell 6th	Fatal Fall
85	Bell Bird JA McCarthy	Hurdle E P Robeson	2.5m / 11 hdl 9 ran	Fakenham Good (G/F)	1-Apr-02 6-10-2 / 78		Leading	Broke Leg
86	Primitive Herb A Ross	Chase D M Reveley	2m / 13 fncs 10 ran	MarketRasen Good (G/S)	1-Apr-02 6-10-6 / 90		Fell 5th	Fatal Fall
87	On Air DR Dennis	NovHurdle E Ian Williams	2.5m / 9 hds 15 ran	Warwick G/F (Good)	2-Apr-02 6-11-0 / -		Mid-Division	Fatal Fall
88	Desert Mountain MA Fitzgerald	Chase A PF Nicholls	2m / 12 fncs 15 ran	Aintree Good	4-Apr-02 9-11-10 / 149		Fell 9th	Fatal Fall
89	Anubis Quercus Mr L Stephens	Chase B GC Evans	2.5m / 18 fnc 30 ran	Aintree GN Good (G/S)	4-Apr-02 9-12-0 / -		In Touch	Fatal Fall
90	Manx Magic G Supple	Chase A MC Pipe	4.5m / 30 fnc 40 ran	Aintree GN Good	6-Apr-02 9-10-7 / 139		Fell 20th	Fatal Fall
91	The Last Fling R McGerard	Chase A Mrs S Smith	4.5m / 30 fnc 40 ran	Aintree GN Good	6-Apr-02 12-10-6 / 138		Tailed Off	Fatal Fall
92	Buddy Marvel P Carberry	Hurdle B M Reveley	3m / 12 hds 8 ran	Ayr Good	19-Apr-02 8-10-0 / 122		Weakening	Broke Leg
93	Wishbone Mr P Robeson	Chase A Twiston-D.	4m / 26 fncs 18 ran	Ayr Good	20-Apr-02 9-9-7 / 134		Prominent	Fatal Fall
94	Pinouli Mr JR Barlow	Chase H DE Nicholls	3m / 18 fncs 12 ran	Bangor Good (G/F)	20-Apr-02 8-11-2 / -		Fell 16th	Fatal Fall
95	Teen Desert A Dempsey	NovChase E J Wade	2.5m / 15 fnc 7 ran	Wetherby Good / Firm	23-Apr-02 6-10-12 / -		Leading	Fatal Fall
96	Stormin' Native A Thornton	NovChase C A Crook	3m / 17 fncs 11 ran	Perth Good (G/S)	24-Apr-02 7-11-11 / 125		Fell 8th	Broke Knee

Race Horse Deaths National Hunt NH Season 2002/2003

Racecourses highlighted in **bold** are where more than one horse was killed on the same day or at the same meeting

	Horse Jockey	Discipline Trainer	Dist./Ob. No.Runners	Course Going	Date W / OR	Cause/Death Pos. in race
1	Silent Hunter E Babington	NovChase E MJ Ryan	3.5m/17 fnc 7 ran	Plumpton Good (G/F)	29-Apr-02 6-10-9 / 62	Fell 12th Weakening Fatal Fall
2	Colette C Honour	Hurdle G ST Lewis	2.5m / 11 hdl 18 ran	Bangor Good	3-May-02 5-10-11 / 84	PU after 5th Weakening Broke Leg
3	Just Lizzie N Dowling	Hurdle B R Nixon	3m / 11 hds 11 ran	Haydock Good	4-May-02 9-9-11 / 128	Fell 5th Prominent Fatal Fall
4	Polydamas Dr P Pritchard	Hurdle E Dr Pritchard	3m / 12 hds 16 ran	Chepstow G/F (Good)	8-May-02 10-10-6 / 95	Collapsed8th Behind t/off Heart Attack
5	Dandonell R Wakley	Chase D JC Tuck	3m / 18 fncs 9 ran	Exeter Good (G/F)	15-May-02 8-10-0 / 87	Fell 13th Weakening Fatal Fall
6	Native Affair A Dobbins	Hurdle E L Lungo	2.5m / 10 hdl 10 ran	Perth G/F (Good)	15-May-02 8-11-2 / 103	Fell 7th Prominent Broke Leg
7	Forty Love Miss T Clark	NovChase H MissJ Fisher	2.5m / 15fnc 10 ran	Perth Good / Firm	16-May-02 7-11-5 / -	Fell bef.12th Leading Br.Shoulder
8	Dream Of Nurmi J Crowley	Chase C Mrs S Smith	3m / 18 fncs 6 ran	Stratford Good / Firm	17-May-02 8-10-8 / 113	PU after 16th Weakening Broke Leg
9	Fiftysevenchannels Miss A Armitage	Chase H Ms Armitage	3.5m / 18 fnc 11 ran	Cartmel G/S (Heavy)	5-Jun-02 13-11-6 / -	PU after 14th Weakening Broke Leg
10	Spirit Of Love G Lee	NovHurdle E EW Tuer	3m / 12 hds 5 ran	MrktRasen G/F (Good)	12-Jun-02 7-11-6 / 94	Fell 11th Prominent Fatal Fall
11	Magical Knight A Evans	NovHurdle E RT Phillips	2m / 8 hds 15 ran	MrktRasen G/F (Good)	12-Jun-02 4-10-8 / -	Fell 1st Prominent Fatal Fall
12	Cootehill Boy G Lee	Chase D W Storey	2.5m / 15fnc 10 ran	Hexham Good (G/S)	15-Jun-02 8-10-9 / 84	Fell 12th Prominent Broke Leg
13	Knockfiarne Magic E Husband	Hurdle D BP Baugh	2.5m / 12 hdl 13 ran	Uttoxeter G/F (Firm)	30-Jun-02 10-11-2 / -	PU after 7th Behind Broke Leg
14	Call The Shots J Crowley	Chase E J Wade	3m / 15 fncs 13 ran	MrktRasen Good (G/F)	7-Jul-02 13-10-11 / 84	PU after 8th Behind Broke Leg
15	Sunuvugun A Scholes	Chase E D Thomson	3m / 15 fncs 13 ran	MrktRasen Good (G/F)	7-Jul-02 10-10-0 / 73	PU after 13th Behind Broke Leg
16	Mr Lamb P Flynn	NovChase D S Dow	2.5m / 15 fnc 6 ran	Stratford G/F (Good)	7-Sep-02 7-10-10 / -	Fell 7th Held Up Fatal Fall
17	Moor Hall Rock R Greene	Chase E Brookhouse	2.5m / 15 fnc 9 ran	Southwell Good (G/F)	13-Sep-02 7-11-0 / 69	Fell 4th Prominent Fatal Fall
18	Piccadilly D Gallagher	Chase E Ms K Milligan	3.5m / 21 fnc 4 ran	Southwell Good (G/F)	13-Sep-02 7-11-1 / 79	Fell Last Challenging Fatal Fall
19	Super Gran K Johnson	NH Flat H R Johnson	2m 12 ran	Hexham Good / Firm	15-Sep-02 4-10-13 / -	PU 4f out Behind Destroyed
20	Windy Valley F Keniry	Hurdle F Ham.Fairley	3m / 12 hds 16 ran	Worcester Good	15-Sep-02 9-11-2 / 93	PU after 6th Prominent Broke Leg
21	Storm Tiger A Thornton	Chase D CG Cox	2m / 12 fncs 8 ran	Hereford Good / Firm	3-Oct-02 11-10-9 / 95	Fell 6th Prominent Fatal Fall
22	Rosidavis P Aspell	Chase D NH Flat H	2m 10 ran	Hexham G/F (Good)	4-Oct-02 4-10-13 / -	PU 4f out Prominent ?
23	Special Present AP McCoy	NovHurdle E L Wells	2.5m / 9 hds 10 ran	Fontwell Good (G/F)	6-Oct-02 4-11-5 / -	Lame run-in Won Fatal Injury
24	Belle D'Orsini S Durack	Hurdle C JJ O'Neill	2.5m / 8 hds 9 ran	Stratford Good (G/F)	19-Oct-02 7-11-1 / 122	Fell 6th Challenging Fatal Fall
25	Miner's Gamble T Doyle	NovChase D AP Jones	2m / 12 fncs 6 ran	Plumpton Good	21-Oct-02 5-10-0 / 77	Fell 2nd ?
26	Mutasarrif D Flavin	Chase G Miss L Davis	2m / 13 fncs 8 ran	Ludlow Firm (G/F)	24-Oct-02 9-10-10 / 78	Fell 8th Prominent Fatal Fall
27	My Baton R Garrity	NovChase D P Beaumont	2.5m / 16 fnc 11 ran	Carlisle Soft (Heavy)	26-Oct-02 7-11-5 / 102	UR 14th Challenging ?
28	Susan Wintour M Bradburne	NovHurdle D HD Daly	2.5m / 10 hdl 12 ran	Bangor Soft	28-Oct-02 5-10-12 / -	HpPUaft2nd ?
29	Charter Ridge JR Kavanagh	Chase B JJ O'Neill	3m / 20 fncs 9 ran	Ascot Good / Soft	2-Nov-02 9-10-11 / 121	HpPUaft13th Prominent ?
30	Kirdford A Honeyball	Hurdle E RH Buckler	3m / 11 hds 9 ran	Sandown G/S (Good)	9-Nov-02 8-10-13 / 87	Collapsed9th Behind Heart Attack
31	Ballygarvan JM Maguire	Chase A TR George	3m / 21 fncs 12 ran	Wincanton Good	9-Nov-02 7-10-3 / 122	Fell 15th Prominent Fatal Fall
32	Its Time For A Win R Walsh	Chase A WP Mullins	2.5m / 15fnc 15 ran	Cheltenham G/S (Good)	16-Nov-02 10-10-9 / 140	Fell 13th Mid-Division Fatal Injury
33	Silver Socks R McGrath	NovChase D MW Easterb.	2m / 12 fncs 4 ran	Wetherby Heavy	16-Nov-02 5-11-12 / 110	Blind 11th PU Prominent Broke Leg
34	Littleton Boreas JR Kavanagh	NovHurdle D T Naughton	2m / 9 hds 12 ran	Fakenham Good / Soft	24-Nov-02 3-10-12 / -	Blind 6th PU Behind ?
35	Mister Wellard R Walsh	NovHurdle E PF Nicholls	2m / 8 hds 12 ran	Exeter Soft (Heavy)	6-Dec-02 5-11-0 / -	PU after 5th Prominent Broke Leg
36	Beethoven S Durack	Hurdle B Noel Chance	2.5m / 11 hdl 10 ran	Chepstow Soft (Heavy)	7-Dec-02 6-11-3 / 123	Collapsed Finished 5th Heart Attack
37	Bneya A Dempsey	NovHurdle D M Reveley	3m / 12 hds 8 ran	Wetherby G/S (Soft)	7-Dec-02 5-10-7 / -	PU after 4th Prominent ?



© BRIAN MOODY

Race Horse Deaths National Hunt NH Season 2002/2003 cont

38	Darapour L Cooper	Hurdle B JJ O'Neill	3m / 12 hds 14 ran	Cheltenham Good (G/S)	13-Dec-02 8-11-2 / 124	BD 9th Held Up	Fatal Injury
39	Audacter A Thornton	Chase D L Wells	2.5m / 15 fnc 7 ran	Folkstone Soft	17-Dec-02 9-11-12 / 119	Fell 5th Prominent	Fatal Injury
40	Le Cabro D'Or P Flynn	Chase C JR Upson	3m / 19 fncs 8 ran	Exeter G/S (Good)	19-Dec-02 8-11-3 / 124	PU after 11th Leading	?
41	Get Real MA Fitzgerald	Chase B Henderson	2m / 12 fncs 7 ran	Ascot Soft	21-Dec-02 11-10-12 / 140	Fell 11th Challenging	Fatal Fall
42	Le Sauvignon R Walsh	NovChase A PF Nicholls	3m / 19 fncs 7 ran	NovHurdle Soft	26-Dec-02 8-11-7 / -	Collapsed Finished 2nd	Heart Attack
43	Could Be Anything W Marston	Hurdle E RT Phillips	2.5m / 11 hdl 18 ran	Ludlow Soft (G/S)	16-Jan-03 6-11-5 / -	Hmpd Fell 7th Behind	Fatal Fall
44	Aussi Don A Honeyball	NovHurdle E PF Nicholls	2m / 9 hds 14 ran	NovHurdle Soft (G/S)	16-Jan-03 7-10-13 / -	BD 6th Behind	Fatal Fall
45	Royal Ceti AP McCoy	NovHurdle E MC Pipe	2m / 9 hds 14 ran	NovHurdle Soft (G/S)	16-Jan-03 6-11-11 / -	Fell 8th Weakening	Fatal Fall
46	Shaluji DC Costello	NH Flat H M Reveley	2m 20 ran	NH Flat H Catterick	18-Jan-03 6-10-9 / -	PU 2f out Challenging	Broke Leg
47	Bolt Action TJ Murphy	Hurdle D PF Nicholls	3m / 11 hds 14 ran	Wincanton G/S (Good)	18-Jan-03 7-11-12 / 115	PU after 9th Prominent	Broke Leg
48	Montalcino AP McCoy	NovChase E MC Pipe	2m / 12 fncs 5 ran	NovChase Soft (Heavy)	23-Jan-03 7-11-7 / 148	PU after 5th Prominent	Br.NearHind
49	Bacchanal R Walsh	Chase A NovHurdle C	3m / 21 fncs 6 ran	Cheltenham G/S (Soft)	25-Jan-03 9-11-10 / 165	Fell 8th Prominent	Br. Hind Leg
50	Tunstall R Garrity	NovHurdle C TD Easterby	2m / 8 hds 14 ran	NovHurdle Good / Soft	25-Jan-03 4-11-6 / 117	Fell Last Collapsed	Fatal Fall
51	Maybe The Business J Tizzard	NovHurdle A NH Flat H	3m / 11 hds 8 ran	NovHurdle Good / Soft	25-Jan-03 7-11-4 / -	Collapsed Collapsed	Heart Attack
52	Carlton Climber Mr A Tinkler	Mrs S Smith NovChase E	14 ran 3.5m / 19 fnc	Heavy (Soft) Fontwell	5-10-11 / - 3-Feb-03	Won Fell 16 rmt PU	Heart Attack
53	Hansbury R Walsh	NovChase E PF Nicholls	5 ran 3m / 11 hds	Soft (Heavy) Wincanton	7-11-2 / - 6-Feb-03	Challenging Fell 4th	Shoulder Inj.
54	Mincarlo F Keniry	NovHurdle D GB Balding	16 ran 2m / 8 hds	G/S (Good) Sandown	7-11-1 / - 13-Feb-03	Prominent Fell Last	Broke Leg
55	Serotonin L Cooper	NovHurdle D JJ O'Neill	11 ran 2.5m / 10 hdl	Heavy (Soft) Catterick	4-10-10 / - 25-Feb-03	Weakening Fell 6th	Fatal Injury
56	Lady Jones S Durack	Hurdle G PL Gilligan	16 ran 2m / 9 hds	Good (G/S) Carlisle	6-10-10 / 72 2-Mar-03	Leading PU 4th	Fatal Fall
57	Tenacious Star DN Russell	NovHurdle E F Murphy	17 ran 2.5m / 15 fnc	G/S (Soft) Carlisle	5-11-0 / - 2-Mar-03	Behind Fell 14th	Broke Leg
58	Flat Mate W Marston	NovChase E Mrs S Smith	12 ran 2.5m / 11 hdl	Soft (Heavy) Carlisle	6-11-2 / - 2-Mar-03	Weakening PU after 2nd	Fatal Fall
59	Shoshoni Warrior L Cooper	NovHurdle D JJ O'Neill	13 ran 2.5m / 8 hds	G/S (Soft) Fontwell	7-11-10 / 95 2-Mar-03	Held Up Fell 5th	?
60	Teddy Mac M Batchelor	NovHurdle E C Weedon	12 ran 3m / 11 hds	Soft Fontwell	6-11-2 / - 3-Mar-03	Mid-Division Fell 7th	Fatal Fall
61	Exterior Profiles RP McNally	Hurdle G KM George	11 ran 3.5m / 19 fnc	Soft Warwick	13-11-1 / 80 8-Mar-03	Leading Fell 9th	Fatal Injury
62	Misti Hunter Miss C Hurley	Chase H Mrs C Ford	7 ran 2m / 8 hds	Good / Soft Cheltenham	14-11-7 / - 13-Mar-03	Behind Fell 6th	Fatal Fall
63	Old California R Greene	Hurdle A MC Pipe	27 ran 3.5m / 22fnc	Good (G/S) Cheltenham	4-11-0 / 128 13-Mar-03	Challenging Fell 2nd	Fatal Fall
64	Dorans Pride Mr RO Harding	Chase B M Hourigan	24 ran 2m / 8 hds	Good (G/S) Cheltenham	14-12-0 / - 13-Mar-03	Prominent Fell 3rd	Fatal Fall
65	Comex Flyer R Walsh	Hurdle A PF Nicholls	28 ran 2.5m / 9 hds	Good (G/S) Fontwell	6-11-2 / 135 17-Mar-03	Behind Fell 3rd	Fatal Fall
66	Half The Pot L Cummins	Hurdle D R Rowe	10 ran 2.5m / 7 hds	Good (G/F) Exeter	8-11-6 / 109 27-Mar-03	Prominent PU after 5th	Fatal Fall
67	Oakfords Lad A Thornton	NovHurdle E RH Alner	6 ran 2.5m / 13 fnc	Firm (G/F) Plumpton	9-11-0 / - 31-Mar-03	Challenging PU after 6th	Br. Hind Leg
68	Granby Bell B Fenton	Chase E EC Lavelle	10 ran 2.5m / 11 hdl	G/F (Good) Aintree	12-112 / 110 3-Apr-03	Behind Fell 9th	?
69	Coolnagorna BJ Geraghty	NovHurdle A JJ O'Neill	15 ran 4.5m / 30fnc	Good (G/S) Aintree GN	6-11-8 / 148 5-Apr-03	Leading UR 19th	Fatal Fall
70	Goguenard W Marston	Chase A Mrs S Smith	40 ran 2.5m / 8 hdl	Good Exeter	9-10-2 / 134 8-Apr-03	Behind Fell 3rd	?
71	Colside Bonnie James Davies	NovHurdle D BG Powell	7 ran 2.5m / 10 hdl	G/F (Firm) Cheltenham	5-10-11 / 88 16-Apr-03	Leading Fell 2nd	Fatal Fall
72	Holborn Hill R Thornton	Hurdle B A King	9 ran 2m / 8 hds	Good (G/F) NewtonAbb.	11-10-2 / 122 19-Apr-03	? Fell 7th	Fatal Fall
73	Kilney AP McCoy	Hurdle E MC Pipe	13 ran 2m / 9 hds	G/F (Good) Stratford	5-10-12 / 90 19-Apr-03	Leading Fell 6th	Fatal Fall
74	Tissifer R Johnson	Hurdle D M Reveley	7 ran 3m / 11 hds	G/F (Good) MarketRasen	7-10-13 / 109 26-Apr-03	Behind S.I.H. PU4th	Broke Leg
75	Ross Will DR Dennis	NovHurdle E Ian Williams	15 ran 2m / 7 hds	Good (G/F) Sedgefield	9-10-4 / 75 26-Apr-03	Prominent Fell 3rd	Put Down
76	Princess Sophie M Deady	NovHurdle E KW Hogg	9 ran	Good / Firm	5-10-4 / 82	?	Fatal Fall

Race Horse Deaths National Hunt NH Season 2003/2004

Racecourses highlighted in **bold** are where more than one horse was killed on the same day or at the same meeting

Horse Jockey	Discipline Trainer	Dist./Ob. No.Runners	Course Going	Date A-W / OR	Cause/Death Pos. in race		
1	The Kings Doctor H Oliver	Chase F JD Frost	2m / 12 fncs 9 ran	Worcester Good (G/S)	2-May-03 9-11-2 / 84	PU 7th Prominent	Broke Leg
2	Marabout B Harding	NovChase E Sir J Barlow	2m / 12 fncs 7 ran	Kelso Good	7-May-03 6-11-0 / -	Fell 2nd Start of race	Fatal Fall
3	State Express Mr M Walford	NovChase H H Oxendale	3m / 17 fncs 7 ran	Huntingdon Good / Firm	10-May-03 12-11-2 / -	UR 8th Challenging	Fatal Injury
4	Salgrado L Cooper	NovHurdle E JJ O'Neill	2m / 8 hds 17 ran	Worcester Good (G/F)	21-May-03 7-11-0 / -	Slipped up Behind	Fatal Injury
5	Nickel Sun D Elsworth	Hurdle B Mrs S Smith	3m / 9 hds 9 ran	Kelso Good	22-May-03 7-10-6 / 121	Fell 7th Prominent	Fatal Fall
6	Four To Win M Ahern	Chase E JS Doyle	2m / 12 fncs 11 ran	Huntingdon Good (G/F)	26-May-03 7-10-7 / 86	Fell 1st Start of race	Fatal Fall
7	No Fear W Marston	NovHurdle D Mrs S Smith	2.5m / 10hds 4 ran	Wetherby Good (G/F)	29-May-03 7-11-0 / -	Prominent Blind 8th PU	Broke Leg
8	Scottish Song F King	NovHurdle E M Reveley	3m / 12 hds 8 ran	MarketRasen Good	11-Jun-03 10-10-9 / 85	Prominent Fell 12th	Fatal Injury
9	Solway Plain B Harding	Chase E L Harrison	2.5m / 15fnc 8 ran	Hexham G/F (Good)	14-Jun-03 9-10-0 / 80	Leading Fell 13th	Fatal Fall
10	Bit O Magic DN Russell	Chase E F Murphy	2.5m / 15fnc 8 ran	Hexham G/F (Good)	14-Jun-03 11-11-6 / 100	Challenging Slipped Up	Fatal Fall
11	Kymerlya AP McCoy	Hurdle E MC Pipe	2.5m / 10hds 13 ran	Worcester G/F (Good)	18-Jun-03 5-11-12 / 110	Challenging PU 8th	Br.Shoulder
12	Tuned Out Nice R Garrity	NovHurdle D P Beaumont	12 ran 3m / 12 hds	Good (G/F) Uttoxeter	5-10-11 / 91 29-Jun-03	Prominent Fell 7th	Broke Leg
13	Theicreemman Mr M Smith	Hurdle G Proddromou	15 ran 2m	Firm Perth	6-10-9 / 86 3-Jul-03	Prominent Fell 1f out	Broke Leg
14	Mini Str B Gibson	NH Flat H JB Walton	9 ran 3m / 12 hds	Good MarketRasen	5-10-7 / - 6-Jul-03	Behind Stumble Last	Broke Leg
15	Over The Hill T Siddall	Hurdle G JA Pickering	10 ran 2m / 13 fncs	Good NewtonAbb.	11-11-9 / 94 14-Jul-03	Staying On Stumble 7th	Fatal Injury
16	North Of Kala P Hider	Chase F GL Moore	8 ran 2m / 8 hds	Good / Firm Worcester	10-11-12 / 94 16-Jul-03	Leading Blind 5th PU	BrokeFetlock
17	Roller V Slattery	Hurdle E JM Bradley	13 ran 2m / 8 hds	Good Cartmel	7-11-2 / 81 17-Jul-03	Weakening PU 3rd	Broke Leg
18	Johnny Oscar BJ Crowley	Hurdle E V Williams	14 ran 3.5m / 16fnc	G/F (Good) Cartmel	6-10-12 / - 17-Jul-03	Track Lead PU Run-In	Lame
19	Blue Irish DN Russell	Chase E F Murphy	12 ran 3.5m / 15fnc	G/F (Good) NovChase E	12-11-5 / 96 22-Jul-03	Challenging PU 12th	Hind Leg Inj.
20	Frankie Anson K Renwick	NovChase E M Hammond	9 ran 2m / 11 fncs	Good / Firm NewtonAbb.	6-11-1 / 81 4-Aug-03	Prominent Fell 3rd	Broke Leg
21	Queensway D Crosse	Chase E RM Carson	6 ran 2.5m / 10hdl	Good (G) Worcester	11-9-11 / 74 8-Aug-03	Prominent Collapsed	Fatal Fall
22	Henbridge Mr R Stephens	NovHurdle F SM Johnson	7 ran 2m / 8 hds	Good / Firm Worcester	7-10-1 / 75 8-Aug-03	Finished 3rd Fell 6th	Heart Attack
23	Carroll's Gold D Crosse	Hurdle E EL James	10 ran 2.5m / 13fnc	Good / Firm Fontwell	5-10-13 / - 22-Aug-03	Mid-Division Fell 2nd	Broke Leg
24	Smetherds Tom Mr O Nelmes	Chase F NR Mitchell	8 ran 2.5m / 10hdl	G/F (Firm) Sedgefield	9-9-7 / 64 5-Sep-03	Behind PU 4th	BrokeHindleg
25	Red Square Man A Thornton	NovHurdle E M Williamson	6 ran 2m / 8 hds	Good (G) Worcester	8-10-12 / 73 7-Sep-03	? Fell 4th	?
26	Gondola H Oliver	Hurdle F S Sherwood	18 ran 2m / 13 fncs	Good / Firm Southwell	7-11-2 / - 12-Sep-03	Prominent Fell 11th	Fatal Fall
27	Megazine A Thornton	NovChase F JD Frost	10 ran 2m / 8 hds	G/F (Good) Worcester	9-10-10 / 76 13-Sep-03	Challenging Fell Last	Fatal Fall
28	Alpha Noble AP McCoy	Hurdle E V Williams	13 ran 3m / 2fncs	Good (G) Listowel	6-11-2 / - 17-Sep-03	Weakening Fell 3 Out	Broke Elbow
29	Putsomethby* L Cooper	Chase A JJ O'Neill	17 ran 2m / 7 hds	Good (G/F) Plumpton	7-10-1 / 125 27-Sep-03	Prominent PU 2nd	Fatal Fall
30	Trump Card** N Fehily	Hurdle D CJ Mann	14 ran 2.5m / 14 fnc	Good / Firm Huntingdon	6-10-11 / 103 9-Oct-03	Held Up Fell 7th	Broke Down
31	Shahboor J Tizzard	Chase E P Robeson	9 ran 2.5m / 17fnc	Good / Firm Ludlow	9-11-12 / 110 9-Oct-03	Prominent Blind UR 12th	Broke Leg
32	Beedulup W Marston	NovChase E P Wegmann	5 ran 2m / 9 hds	Good / Firm Carlisle	8-11-0 / 75 10-Oct-03	Prominent PU 3rd	?
33	In Extremis Li B Orde-Powlett	Hurdle E GM Moore	6 ran 2m / 8 hds	Good / Firm Kelso	7-10-12 / 95 18-Oct-03	Leading Slipped Up	?
34	Picquet Officer A Dobbin	NovHurdle E SE Forster	6 ran 2.5m / 10 hdl	Good (Firm) Cheltenham	5-10-12 / - 29-Oct-03	Challenging PU 8th	Destroyed
35	Acamani*** AP McCoy	NovHurdle C VDer Recke	9 ran 3m / 11 hds	Good / Firm Wincanton	6-10-12 / - 8-Nov-03	Mid-Division Fell Last	Lame
36	Dizzy Tart P Holley	Hurdle B PN Dutfield	8 ran 2m / 8 hds	Good / Firm Huntingdon	4-10-1 / 110 11-Nov-03	Challenging Collapsed3rd	Fatal Fall
37	Tareno P Moloney	NovHurdle E BJ Curley	14 ran	G/F (Good)	5-10-12 / -	Leading	Heart Attack

Race Horse Deaths National Hunt NH Season 2003/2004 *cont*

38	Scotmail Park J Crowley	NovHurdle E GM Moore	2m / 7 hdl 15 ran	Sedgefield G/F (Good)	11-Nov-03 4-10-12 / -	Fell 2nd Behind	Fatal Fall
39	Sharp Steel N Fahily	NovChase D SJ Wilton	2m / 13 fncs 3 ran	Ludlow Firm (G/F)	13-Nov-03 8-11-12 / 92	Fell 12th Challenging	Fatal Fall
40	Occam B Fenton	NovChase D A Bailey	2m / 13 fncs 3 ran	Ludlow Firm (G/F)	13-Nov-03 9-10-11 / 77	Fell Last Fell Last	Fatal Fall
41	Brother Joe R Johnson	NovChase B PJ Hobbs	2.5m / 15 fnc 4 ran	Cheltenham Good (G/F)	15-Nov-03 9-11-7 / 143	Fell 14th Prominent	Br.Shoulder
42	Poliantas R Walsh	Chase A PF Nicholls	2.5m / 15 fnc 9 ran	Cheltenham Good (G/F)	15-Nov-03 6-11-0 / 151	Collapsed Finished 2nd	Heart Attack
43	Formal Bid N Fahily	NovChase C CC Bealby	3m / 17 fncs 5 ran	Haydock G/S (Good)	16-Nov-03 6-11-0 / -	Fell 13th Prom. Killed	Runn. Loose
44	Kippanour J Tizzard	Hurdle E AG Hobbs	3.5m / 11hdl 11 ran	Huntingdon Good / Soft	22-Nov-03 11-11-1 / 99	PU 5th Behind	Broke Leg
45	Red Halo S Durack	NovChase C S Kirk	2m / 11fncs 6 ran	Warwick G/F (Good)	25-Nov-03 4-10-10 / -	Fell 1st Leading	Fatal Fall
46	Intelligent RM Power	Chase B Harrington	3m / 22 fncs 4 ran	Sandown Good (G/F)	5-Dec-03 7-11-10 / -	Fell 11th Prominent	Fatal Fall
47	Max Pride B Hitchcott	Chase D R Dickinson	3.5m / 22 fnc 4 ran	Warwick Good (G/F)	6-Dec-03 8-11-12 / 116	Fell 16th Leading	Br. Hind Leg
48	Goodtime George TJ Murphy	NovChase B M Pitman	3m / 19 fncs 9 ran	Cheltenham Good	12-Dec-03 10-11-5 / -	Blind 8th PU Prominent	?
49	Majority Verdict R Johnson	NovChase B HD Daly	2.5m / 15 fnc 10 ran	Cheltenham Good / Soft	13-Dec-03 7-11-5 / -	Fell 12th Challenging	Fatal Fall
50	Xtra L Aspell	NovHurdle A JAB Old	2m / 9hdl 10 ran	Ascot Good (G/F)	19-Dec-03 5-11-0 / -	PU 2nd ?	?
51	Lozy Lee T Scudamore	NovHurdle E M Scudam.	2.5m / 10hdl 15 ran	Hereford G/S (Soft)	20-Dec-03 5-11-0 / -	Fell 6th Prominent	Fatal Fall
52	Mohawk Brave JP McNamara	NovHurdle E KC Bailey	3.5m / 12 hdl 13 ran	Huntingdon Good / Soft	26-Dec-03 5-10-12 / -	Fell 11th Weakening	Fatal Fall
53	Easy Tiger S Durack	Hurdle G JJ O'Neill	2m / 10 hdl 10 ran	Uttoxeter G/S (Soft)	26-Dec-03 5-10-12 / -	PU 5th Held Up	Broke Leg
54	Sloane Street K Prendergast	Hurdle E M Scudam.	3m / 12 hdl 14 ran	Haydock Good / Soft	29-Dec-03 4-10-7 / 100	PU 6th Prominent	?
55	Take Control P Moloney	Chase A MC Pipe	3.5m / 22 fnc 12 ran	Warwick Good / Soft	10-Jan-04 10-10-3 / 135	Fell 6th? Behind	?
56	Behrajan BJ Byrne	Chase A HD Daly	3.5m / 22 fnc 12 ran	Warwick Good / Soft	10-Jan-04 9-11-9 / 158	Fell 21st 3rd Weakng.	Broke Neck
57	Sheer Genius S Durack	NovChase C M Pitman	3m / 19 fncs 5 ran	Kempton Good (G/S)	17-Jan-04 8-11-3 / -	PU 9th Prominent	?
58	Jazz Duke PJ Brennan	Chase F MJ Weeden	3.5m / 15 fnc 13 ran	Plumpton Soft (Heavy)	19-Jan-04 11-10-2 / 69	Collapsed Won Race	Exhaustion
59	Dextra Lighting J Tizzard	Hurdle F CL Tizzard	3m / 12 hdl 11 ran	Chepstow Soft	23-Jan-04 5-11-4 / -	Fell Last Challenging	Died Later
60	Gunner Dream R McGrath	NovChase D C Grant	3m / 18 fncs 5 ran	Carlisle Heavy (Soft)	11-Feb-04 8-10-10 / 76	PU Halfway ?	?
61	Angelena Ballerina T Greenway	NovChase E H Dalton	3m / 18 fncs 13 ran	Towcaster G/S (Heavy)	22-Feb-04 6-10-8 / 75	Fell 2nd ?	Fatal Fall
62	Another Moose B Fenton	Hurdle A EC Lavelle	3m / 11 hdl 8 ran	Kempton Good	28-Feb-04 9-11-4 / 120	Fell 6th Prominent	Died Later
63	Shooting Light AP McCoy	Chase A MC Pipe	3m / 19 fncs 11 ran	Kempton Good	28-Feb-04 11-11-12 / 150	PU 17th Mid-Division	Broke Down
64	Miss Cool AP McCoy	NovChase D MC Pipe	2.5m / 17 fnc 7 ran	Ludlow Good (G/F)	4-Mar-04 8-11-2 / -	Fell 12th Leading	Br.Shoulder
65	Premier Generation O Dayman	Chase E Dr Pritchard	2m / 12 fncs 5 ran	Hereford G/F (Firm)	9-Mar-04 11-9-6 / 86	Collapsed Finish. Last	Heart Attack
66	Elvis Miss C Milne	Hurdle G L Wells	2m / 7 hdl 17 ran	Chepstow G/F (Good)	10-Mar-04 11-11-4 / 89	BD 1st Behind	BD Fatally
67	Yorkshire D Crosse	Hurdle D DL Williams	2m / 8 hdl 6 ran	Chepstow G/F (Good)	10-Mar-04 10-11-9 / 117	Fell 3rd Leading	Fatal Fall
68	Benbecula JA McCarthy	NovChase D PR Webber	2.5m / 16 fnc 12 ran	Carlisle G(S)/G(F)	11-Mar-04 7-11-2 / 111	Fell 10th Prominent	Fatal Fall
69	Sumthyme Special L Berridge	Hurdle F L Lungo	2.5m / 11 hdl 12 ran	Carlisle G(S)/G(F)	11-Mar-04 12-10-6 / 120	Collapsed Finished 4th	Heart Attack
70	Badger Beer Mr N Mitchell	Chase H JW Dufosse	3m / 20 fncs 6 ran	Wincanton G/F (Good)	11-Mar-04 12-11-11 / 86	Fell 8th Prominent	Fatal fall
71	Eye Of The Tiger B Harding	NovChase E S Kirk	2.5m / 17 fnc 3 ran	Ayr G/F (Good)	12-Mar-04 8-11-0 / -	Fell Last Prominent	Fatal Fall
72	Tardar E Cooper	Hurdle A JJ O'Neill	3m / 13 hdl 24 ran	Cheltenham Good	16-Mar-04 8-11-5 / 146	Fell 11th Staying On	Fatal Fall
73	Atlastaboy Mr G Elliott	Chase B TR George	4m / 24fncs 22 ran	Cheltenham Good	17-Mar-04 8-11-11 / 120	Blind 10th UR Prominent	?
74	Magic Bailiwick MrGShenkin	Chase B MC Pipe	4m / 24fncs 22 ran	Cheltenham Good	17-Mar-04 6-10-12 / 71	Fell 17th Weakening	Fatal Fall
75	El Hombre W Marston	Chase F CC Bealby	3m / 19fncs 10 ran	Huntingdon Good (G/S)	17-Mar-04 8-12-0 / 125	Fell Last Challenging	Fatal Fall
76	Remembrance D Flavin	Hurdle E MJ Gingell	2m / 8 hdl 12 ran	Fakenham Good / Soft	19-Mar-04 4-10-9 / -	Fell 3rd Held Up	Fatal Fall

Race Horse Deaths National Hunt NH Season 2003/2004 *cont*

77	Tiger Tops Brian Murphy	Hurdle E JA Supple	2m / 8 hdl 12 ran	Fakenham Good / Soft	19-Mar-04 5-11-2 / -	PU 4th Held Up	Broke Down
78	Cool Investment A Honeyball	Hurdle E RM Stronge	3.5m / 13 hdl 11 ran	Hereford Good / Soft	22-Mar-04 7-11-7 / 103	PU 11th Prominent	Fatal Injury
79	The Proof T Best	Hurdle E GB Balding	2m / 6 hdl 17 ran	Exeter G/S (Good)	23-Mar-04 7-9-13 / 83	Fell 4th Held Up	Broke Leg
80	Dealer Del MA Fitzgerald	Chase E CJ Down	3m / 17 fncs 6 ran	Towcaster G/S (Good)	24-Mar-04 10-11-3 / 99	Fell 1st ?	Fatal Fall
81	Dionn Righ G Lee	Chase E J H Johnson	3.5m / 21 fnc 10 ran	Sedgefield G(S)/G(F)	30-Mar-04 9-11-5 / 100	Fell 1st ?	Fatal Fall
82	Marmaduke TJ Murphy	Hurdle D M Pitman	2m / 9 hdl 10 ran	Ludlow Good	8-Apr-04 8-11-4 / 115	Fell 8th Prominent	Fatal Fall
83	Solvay Breeze F King	Chase F L Harrison	3.5m / 19 fnc 14 ran	Carlisle Good / Soft	18-Apr-04 11-10-3 / 76	PU 15th Struggling	Broke Down
84	Under The Sand TJ Murphy	NovChase E PJ Hobbs	3m / 16 fncs 7 ran	Fontwell Good	22-Apr-04 7-11-7 / 110	Collapsed Finished 2nd	Rup.Bl.Vesl.

* Trained in England, ran and killed in Ireland
 ** Ran under the name 'Investment Force'
 *** Trained in Germany, ran and killed in England

National Hunt Deaths - Breakdown of Race Types/Seasons

	Season 2000/2001	Season 2001/2002	Season 2002/2003	Season 2003/2004	Seasons Total
National Hunt Flat:	4	6	4	1	15
Novice Hurdle:	10	22	20	12	64
Hurdle:	11	29	21	27	88
Novice Chase:	11	19	10	19	59
Chase:	13	20	21	25	79
Totals:	49	96	76	84	305



National Hunt Racecourses Where Deaths Occurred

Listed in order of most dangerous for each season.

NH Season 2000/2001 26 Courses where deaths occurred

Course	Horse Deaths	Days racing	Course	Horse Deaths	Days racing
1 Ayr	2	7	16 Aintree	1	6
2 Musselburgh	2	7	17 Doncaster	1	6
3 Taunton	3	11	18 Huntingdon	2	14
4 Warwick	3	11	19 Bangor	1	8
5 Newton Abbot	4	15	20 Chepstow	1	8
6 Leicester	2	8	21 Southwell	1	8
7 Sedgefield	3	12	22 Kempton	1	10
8 Market Rasen	4	17	23 Perth	1	10
9 Cheltenham	2	9	24 Uttoxeter	1	15
10 Fakenham	2	9	25 Down Royal*	1	1
11 Ludlow	2	9	26 Wolverhampton**	1	1
12 Worcester	3	14			
13 Cartmel	1	5		49	243
14 Haydock	2	10		Mean Deaths to Days Racing: 20.2	
15 Folkestone	2	11		* Information unavailable on all meetings	
				** No longer a National Hunt course	

NH Season 2001/2002 33 Courses where deaths occurred

Course	Horse Deaths	Days racing	Course	Horse Deaths	Days racing
1 Aintree	5	6	19 Chepstow	2	10
2 Stratford	8	17	20 Hexham	2	10
3 Haydock	4	9	21 Kempton	2	10
4 Fakenham	3	8	22 Catterick	1	6
5 Huntingdon	6	18	23 Newton Abbot	3	18
6 Market Rasen	6	18	24 Southwell	2	13
7 Worcester	4	12	25 Exeter	2	14
8 Sedgefield	6	19	26 Carlisle	1	8
9 Plumpton	5	16	27 Hereford	2	16
10 Cheltenham	4	13	28 Kelso	1	8
11 Ludlow	4	13	29 Newcastle	1	10
12 Folkestone	3	10	30 Towcester	1	10
13 Warwick	3	11	31 Newbury	1	11
14 Perth	3	12	32 Taunton	1	12
15 Ascot	2	9	33 Fontwell	1	15
16 Bangor	2	9		96	395
17 Wetherby	3	14		Mean Deaths to Days Racing: 24.3	
18 Ayr	2	10			

NH Season 2002/2003 33 Racecourses where deaths occurred

Course	Horse Deaths	Days racing	Course	Horse Deaths	Days racing
1 Carlisle	4	9	19 Southwell	2	12
2 Cheltenham	7	16	20 Bangor	2	13
3 Aintree	2	6	21 Ludlow	2	13
4 Catterick	2	6	22 Taunton	2	13
5 Exeter	5	16	23 Wetherby	2	16
6 Doncaster	2	7	24 Fakenham	1	9
7 Fontwell	5	18	25 Fokestone	1	10
8 Market Rasen	5	18	26 Kempton	1	10
9 Ascot	2	8	27 Newcastle	1	10
10 Stratford	4	16	28 Haydock	1	11
11 Wincanton	3	13	29 Worcester	1	14
12 Warwick	2	9	30 Hereford	1	17
13 Cartmel	1	5	31 Newton Abbot	1	17
14 Hexham	3	15	32 Uttoxeter	1	19
15 Plumpton	3	15	33 Sedgefield	1	20
16 Sandown	2	10		76	415
17 Chepstow	2	12		Mean Deaths to Days Racing: 18.3	
18 Perth	2	12			

NH Season 2003/2004 30 Racecourses where deaths occurred

Course	Horse Deaths	Days racing	Course	Horse Deaths	Days racing
1 Cheltenham	8	16	18 Hexham	2	15
2 Warwick	4	8	19 Wincanton	2	15
3 Carlisle	5	11	20 Market Rasen	2	17
4 Worcester	8	18	21 Newton Abbot	2	17
5 Huntingdon	7	19	22 Fontwell	2	18
6 Ludlow	5	14	23 Uttoxeter	2	18
7 Cartmel	2	6	24 Ascot	1	10
8 Kempton	3	11	25 Sandown	1	11
9 Chepstow	3	13	26 Southwell	1	11
10 Fakenham	2	9	27 Ayr	1	12
11 Sedgefield	4	18	28 Exeter	1	16
12 Kelso	3	14	29 Wetherby	1	16
13 Hereford	3	15	30 Other*	1	1
14 Haydock	2	11		84	402
15 Perth	2	14		Mean Deaths to Days Racing: 20.9	
16 Plumpton	2	14		* British Trained Horse Killed Abroad	
17 Towcester	2	14			

Deaths to Days Racing NH Seasons 2000/2001 through to 2003/2004:

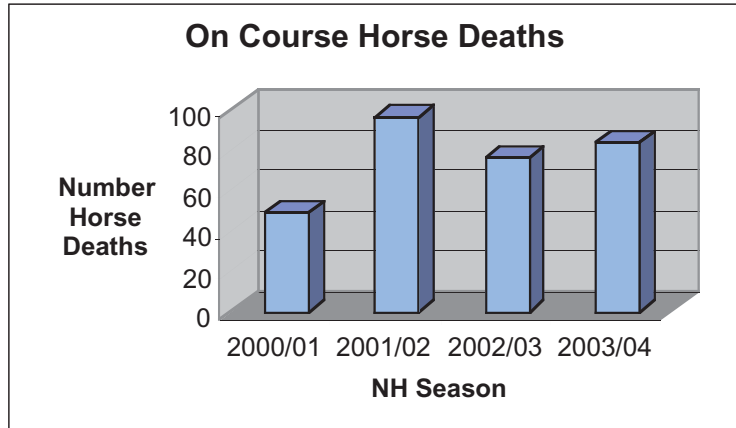
Horses:	305
Days Racing	1455
Total Mean	20.9

It can be seen from comparing the Total Mean figure with the 2003/2004 Season Mean figure that deaths are consistent and not reducing on British Racecourses.

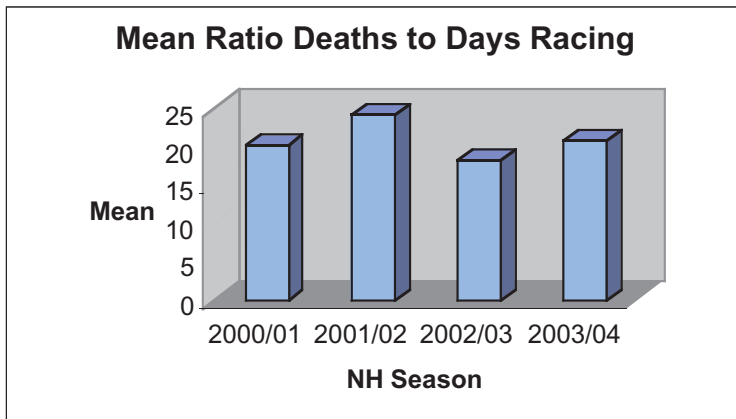


Graphs displaying On Course Horse Deaths as Numbers and as a Mean in relation to Deaths to Number of Days Racing

Season	2000/01	2001/02	2002/03	2003/04
Deaths	49	96	76	84



Season	2000/01	2001/02	2002/03	2003/04
Mean	20.2	24.3	18.3	20.9



The Mean Ratio Deaths to Days Racing graph indicates the consistency of deaths over the past four seasons. This highlights that nothing relevant is being done by the racing industry to lower the death rate of horses on British racecourses.

NH Racecourses that have killed Horses in relation to total days racing from Seasons 2000/2001 to 2003/2004

Courses are listed according to how dangerous they are, with the most hazardous first.

	Course	Horse Deaths	Days racing	Deaths per 100 days racing
1	Cheltenham	21	54	38.89
2	Aintree	8	25	32
3	Warwick	12	39	30.77
4	Carlisle	10	34	29.41
5	Worcester	16	58	27.59
6	Ludlow	13	49	26.58
7	Market Rasen	17	70	24.29
8	Fakenham	8	35	22.86
9	Huntingdon	15	66	22.73
10	Cartmel	4	18	22.22
11	Haydock	9	41	21.95
12	Sedgefield	14	69	20.29
13	Stratford	12	61	19.67
14	Chepstow	8	43	18.6
15	Plumpton	10	56	17.86
16	Kempton	7	41	17.07
17	Perth	8	48	16.67
18	Folkestone	6	40	15
19	Newton Abbot	10	67	14.93
20	Ascot	5	34	14.71
21	Hexham	7	48	14.58
22	Southwell	6	44	13.64
23	Exeter	8	59	13.56
24	Ayr	5	37	13.5
25	Taunton	6	46	13.04
26	Catterick	3	24	12.5
27	Fontwell	8	65	12.31
28	Bangor	5	39	11.63
29	Doncaster	3	28	10.71
30	Wetherby	6	58	10.34
31	Hereford	6	59	10.17
32	Kelso	4	43	9.3
33	Wincanton	5	55	9.09
34	Sandown	3	36	8.33
35	Musselburgh	2	25	8
36	Towcester	3	38	7.89
37	Leicester	2	34	5.88
37	Uttoxeter	4	68	5.88
39	Newcastle	2	37	5.41
40	Newbury	1	38	2.63
Total & Mean		302	1829	16.51

There are currently 41 National Hunt courses. Lingfield has been omitted from this list due to not racing through four seasons, with only seven days racing in total. Therefore, accurate analysis of the course cannot be made. However, deaths do occur there, with Felixrdotcom being a recent example.

Horse Deaths Range: 20
Deaths/100 Days Racing Range: 36.26

The wide numerical range clearly indicates the extremes that horses face at different racecourses. Any mathematical data with similar range from a mere sample of 40 (in this case the number of courses) shows instability and problems with the structure where the ultimate goal would be zero in deaths and range. Clearly, the courses at the top of the list would benefit, from a best practice point of view, by looking at those at the lower end. Those at the bottom should, in turn, look to achieve a zero rating.



**Animal Aid exposes
and campaigns
peacefully against
all animal abuse,
and promotes a
cruelty-free lifestyle**

Published by Animal Aid

The Old Chapel Bradford Street Tonbridge Kent TN9 1AW

Tel: 01732 364546 Fax: 01732 366533 info@animalaid.org.uk

www.animalaid.org.uk

