

Suginami City Flood Hazard Map

About the Flood Hazard Map

- This map shows predicted inundation areas, inundation depth, and evacuation centers in case of flooding caused by overflowing rivers due to heavy rains. This revision of the flood hazard map is based on the status of river development, flood retention basins, and the status of development of the sewerage system, which are used in the Kanda River flood forecast map (partially amended in July 2003), published by the Tokyo metropolitan government in August 2001, and simulates the flooding predicted for Suginami City in case of heavy rains comparable to the Tokai heavy rain in September 2000 and the severe rainfall on September 4, 2005, in the entire area of Suginami City. This map provides wider ranges deeper levels of inundation based on the simulation of the above two rainfalls.
 - Predicted flooded areas and the degrees of flooding vary depending on how rain falls, changes in the land, and the status of development of the rivers and the sewer system.
 - This map indicates areas expected to be flooded to a depth of 20 cm and more. Thus, areas that are not highlighted may also be flooded.
 - Areas enclosed in black diagonal lines indicate the areas where flooding occurred in the past. Please pay extra attention in case of rain.
 - People living in Suginami are encouraged to learn of the possibility of flooding to prepare for flood damage on a daily basis, as well as to plan for evacuation and other events.
- Preparation : March 2006
 Target rivers : Arakawa Kanda River (Kanda River, Zenpukuji River, and Myoshoji River)
 Target rainfalls : Tokai heavy rain, September 2000 (Total rainfall: 589 mm, max. hourly rainfall: 114 mm)
 Severe rainfall, September 4, 2005 (Total rainfall: 264 mm, max. hourly rainfall: 112 mm)
- ※Locations flooded in the past are based on previous flood damage up to the end of 2010.

Map Legend

Points for reading the map

Since the areas along rivers are low lying in general, precautions are necessary because the level of inundation may increase. In addition, please note that the blue and green areas may also be inundated extensively even when you are away from rivers.

- The areas highlighted in the belt-like distribution are lower in elevation because there were rivers flowing through the area (pedestrian path today).
- The areas highlighted locally are lower in elevation because there were ponds in the area.

Predicted water depth in case of flooding (estimate)

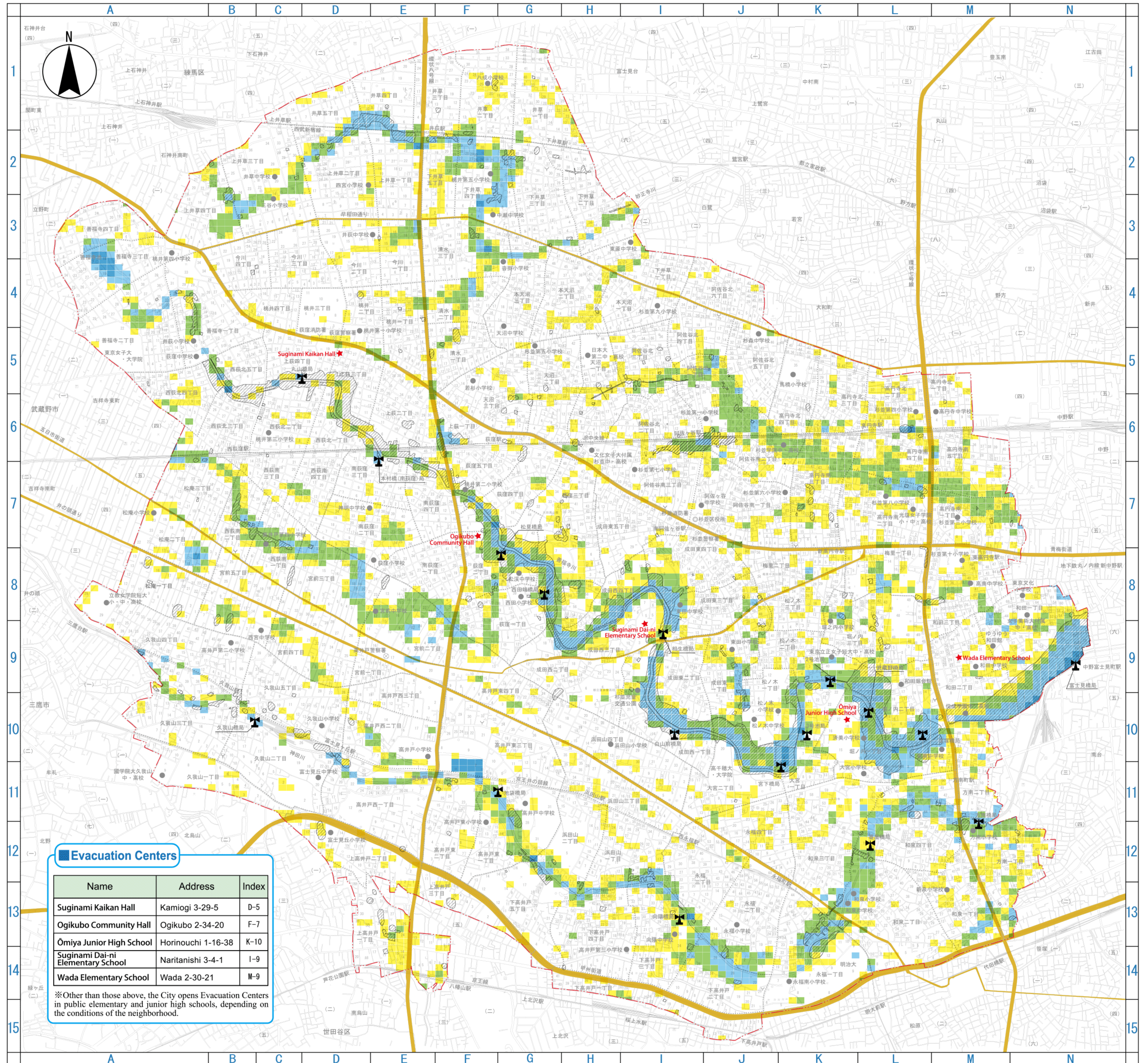
	More than 0.2 m and less than 0.5 m (up to an adult's knees)
	More than 0.5 m and less than 1.0 m (up to an adult's waist)
	More than 1.0 m and less than 2.0 m (up to the space under the eaves on the 1st floor of a house)
	More than 2.0 m and less than 5.0 m (up to space under the eaves on the 2nd floor of a house)
	Areas that were flooded in the past (1981-2010)

	City and ward boundary
	Section boundary
	Major road
	City office
	River-level alarm system
	Fire department
	Police station
	Evacuation Centers
	Elementary and junior high schools, etc.

Evacuation Centers

Name	Address	Index
Suginami Kaikan Hall	Kamiogi 3-29-5	D-5
Ogikubo Community Hall	Ogikubo 2-34-20	F-7
Ōmiya Junior High School	Horinouchi 1-16-38	K-10
Suginami Dai-ni Elementary School	Naritanishi 3-4-1	I-9
Wada Elementary School	Wada 2-30-21	M-9

※Other than those above, the City opens Evacuation Centers in public elementary and junior high schools, depending on the conditions of the neighborhood.



1:28,000

500 0 500 1000 1500m