

Births: Final Data for 2021

by Michelle J.K. Osterman, M.H.S., Brady E. Hamilton, Ph.D., Joyce A. Martin, M.P.H., Anne K. Driscoll, Ph.D., and Claudia P. Valenzuela, M.P.H., Division of Vital Statistics

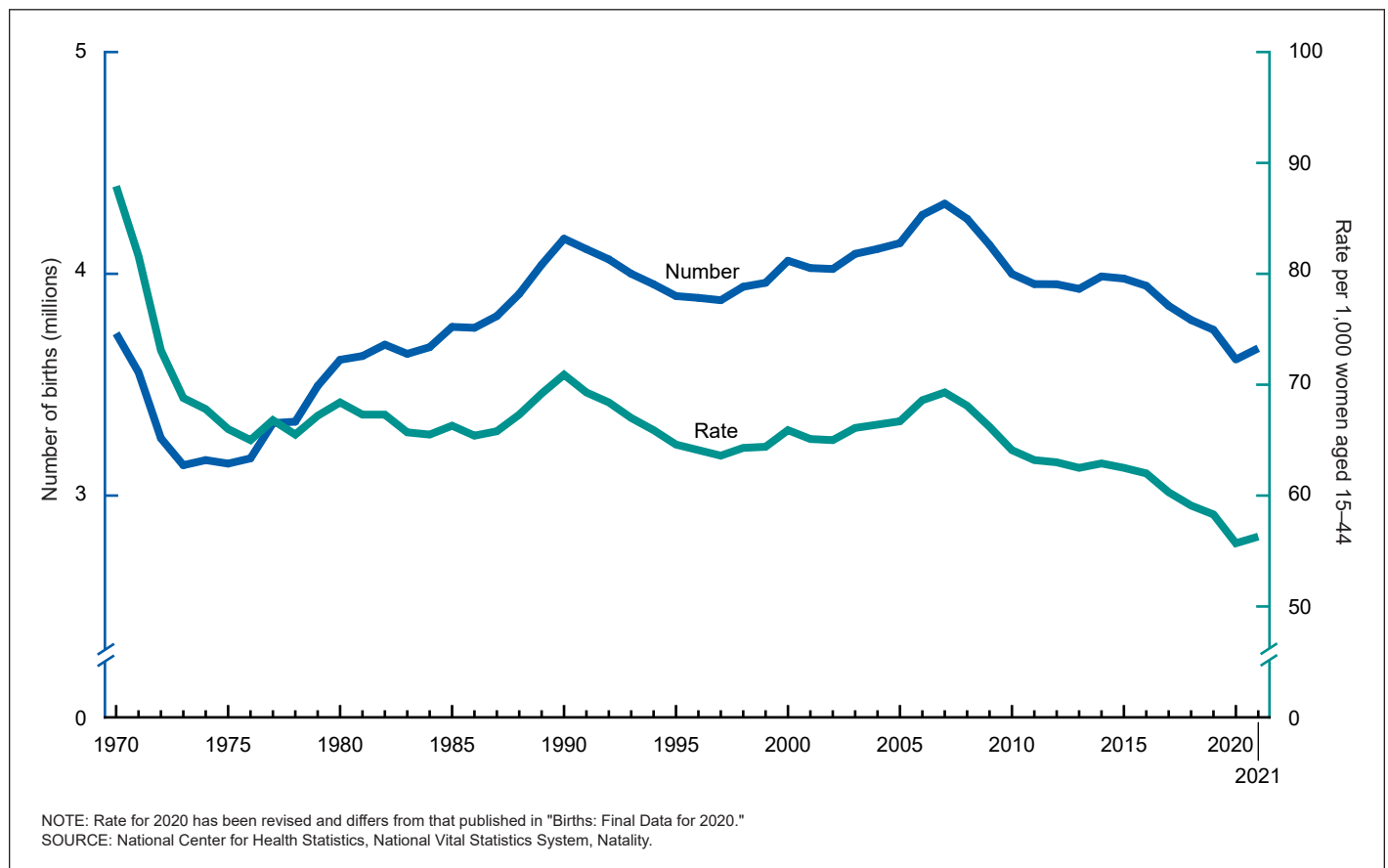
Abstract

Objectives—This report presents 2021 data on U.S. births according to a variety of characteristics. Trends in fertility patterns and maternal and infant characteristics are described and interpreted.

Methods—Descriptive tabulations of data reported on the birth certificates of the 3.66 million births that occurred in 2021

are presented. Data are presented for maternal age, live-birth order, race and Hispanic origin, marital status, tobacco use, prenatal care, source of payment for the delivery, method of delivery, gestational age, birthweight, and plurality. Selected data by mother's state of residence and birth rates by age also are shown. Trend data for 2010 to 2021 are presented for selected items and by race and Hispanic origin for 2016–2021.

Figure 1. Live births and general fertility rates: United States, 1970–2021



Results—A total of 3,664,292 births were registered in the United States in 2021, up 1% from 2020. The general fertility rate rose 1% from 2020 to 56.3 births per 1,000 women aged 15–44 in 2021. The birth rate for females aged 15–19 fell 7% between 2020 and 2021; birth rates declined 3% for women aged 20–24 and rose 2% to 5% for women aged 25–44. The total fertility rate rose 1% to 1,664.0 births per 1,000 women in 2021. Birth rates declined for unmarried women but increased for married women from 2020 to 2021. Prenatal care beginning in the first trimester rose to 78.3% in 2021; the percentage of women who smoked during pregnancy declined to 4.6%. The cesarean delivery rate increased to 32.1% in 2021; Medicaid was the source of payment for 41.0% of births. The preterm birth rate rose 4% to 10.49%; the low birthweight rate also rose (to 8.52%). Increases in the twin birth rate (31.2 per 1,000 births in 2021) and the triplet and higher-order multiple birth rate (80.0 per 100,000 births) were not significant.

Keywords: birth certificate • maternal and infant health • birth rates • maternal characteristics • National Vital Statistics System

Introduction

This report presents detailed data on numbers and characteristics of births in 2021, birth and fertility rates, maternal demographic and health characteristics, medical and health care utilization, source of payment for the delivery, and infant health characteristics. Reports of provisional birth statistics for 2021 presented overall and monthly data on selected topics are based on a sample of nearly all (99.94%) 2021 births (1–3); a National Center for Health Statistics *Data Brief* presented selected characteristics based on final data for 2021 births (4).

In addition to the tabulations included in this report, more detailed analysis is possible by using the annual natality public-use file. The data file may be downloaded from: https://www.cdc.gov/nchs/data_access/Vitalstatsonline.htm (5). The public-use file does not include geographic detail; a file with this information may be available by request (6). Birth data may also be accessed through the Centers for Disease Control and Prevention's (CDC) Wide-ranging Online Data for Epidemiologic Research (WONDER). WONDER is a user-friendly, web-based data query system that makes several CDC information resources available to public health professionals and the public (7).

2003 revision of U.S. Standard Certificate of Live Birth

Starting in 2016, all 50 states, the District of Columbia (D.C.), Puerto Rico, Guam, Commonwealth of the Northern Marianas, and U.S. Virgin Islands reported data based on the 2003 U.S. Certificate of Live Birth. American Samoa continued to report based on the 1989 birth certificate revision.

Detailed tables of many topics are included in this report. Internet-only tables on a number of additional topics, such as births by attendant and place and delivery, mean age of mother by live-birth order, maternal prepregnancy body mass index,

infections during pregnancy, and maternal morbidity, are also available; see [List of Internet Tables](#). For information on data quality, see reports that assessed the quality of selected medical and health data from the 2003 revised birth certificate and the "User Guide to the 2021 Natality Public Use File" (8–10).

Methods

Data shown in this report are based on 100% of the birth certificates registered in all states and D.C. More than 99% of births occurring in the United States are registered (10). Tables showing data by state also provide separate information for Puerto Rico, Guam, U.S. Virgin Islands, and Commonwealth of the Northern Marianas. These areas, however, are not included in totals for the United States. Data for American Samoa were not available for 2021.

The 2003 revision of the U.S. Standard Certificate of Live Birth allows the reporting of more than one race (multiple races) for each parent (11), according to the revised standards issued by the Office of Management and Budget (OMB) in 1997 (12). Starting in 2016, all 50 states, D.C., Puerto Rico, Guam, Northern Marianas, and U.S. Virgin Islands reported race data according to these 1997 OMB standards that allow for the reporting of a minimum of five race categories either by single race (reported alone) or in combination (more than one race or multiple races) (12). The race and Hispanic-origin groups shown in this report follow the 1997 standards and differ from the bridged-race categories shown in most previous reports that are based on data from 2015 and earlier. (13). The categories are non-Hispanic single-race White, non-Hispanic single-race Black or African American, non-Hispanic single-race American Indian or Alaska Native (AIAN), non-Hispanic single-race Asian, non-Hispanic single-race Native Hawaiian or Other Pacific Islander (NHOPI), and Hispanic; for brevity, text references to non-Hispanic White or non-Hispanic Black women omit the term "single-race." Because single-race data are not available for the entire United States before 2016, only race data for 2016–2021 are shown in this report. For more information on differences between single- and bridged-race groups, see "Births: Final Data for 2016" (14).

Race and Hispanic origin are reported independently on the birth certificate and reporting of Hispanic-origin ethnicity was not affected by the change to the 1997 OMB standards. Most tables in this report show data for the categories non-Hispanic single-race White, non-Hispanic single-race Black, and Hispanic. Selected tables also include data for the categories non-Hispanic single-race AIAN, non-Hispanic single-race Asian, and non-Hispanic single-race NHOPI. Data are also presented in some tables for specific Hispanic groups: Mexican, Puerto Rican, Cuban, Dominican, Central and South American, and Other and unknown Hispanic (includes Hispanic origins not categorized, including Spaniards). Before 2018, data for the Dominican subgroup had been included in the category "Other and unknown Hispanic."

Trend tables included in the detailed tables for this report include the years 2010–2021; see [List of Detailed Tables](#). Longer-term trends previously shown in this report series can be found in earlier-year reports (for example, "Births: Final Data for 2015") (13).

In this report, the total number of births includes births to women up to age 64. In tables that include age of mother, the oldest age groups shown (40–54, 45–49, 45–54, or 50–54) include births to mothers up to age 64 (births to mothers 55–64 are included in the 50–54 age group).

For information on levels of incomplete reporting by state, see the 2021 User Guide (10). For information on the measurement of data items shown in this report, and the Internet Tables, imputation techniques used, computation of derived statistics, and definitions of terms, see the 2021 User Guide (10).

Birth and fertility rates for 2020 shown in this report have been revised and may differ from those published in “Births: Final Data for 2020” and elsewhere (1,15). Previously published birth and fertility rates for 2020 were based on postcensal population estimates derived from the 2010 census. The revised rates shown here are based on revised population estimates consistent with the 2020 census, as of April 1.

Demographic Characteristics (Tables 1–12)

Births and birth rates

Number of births

In 2021, 3,664,292 births were registered in the United States, up 1% (or 50,645) from 2020, following a decline of 4% from 2019 to 2020 (Table 1, Figure 1). For 2014–2019, the number of births had declined by an average of 1% per year. Previously, the number of births declined by an average of 2% per year from 2007 to 2013 and increased 1% in 2014 (13). Despite the increase from 2020 to 2021, the number of births in 2021 remained lower than the number in 2019.

Among the race and Hispanic-origin groups, the number of births rose 2% for non-Hispanic White and Hispanic women from 2020 to 2021, and declined 2% for non-Hispanic Black and non-Hispanic Asian women and 3% for non-Hispanic AIAN women (Tables 1, 3, and 6). The decline in the number of births for non-Hispanic NHOPI women (1%) was not significant. Among the specified Hispanic groups, births rose 1% for Mexican and Puerto Rican women, 3% for Other and unknown Hispanic origin women, 5% for Cuban and Central and South American women, and 6% for Dominican women (Tables 4 and 7).

Fertility rate

The **general fertility rate** (GFR) for the United States in 2021 was 56.3 births per 1,000 women aged 15–44, up 1% from 2020 (55.7) (Table 1). This is the first increase in the GFR since 2014; the rate declined 4% from 2019 to 2020 and by an average of 2% per year from 2014 to 2019. From 2007 to 2013, the GFR declined steadily by an average of 2% per year and then increased 1% between 2013 and 2014 (13).

Among the race and Hispanic-origin groups, the GFR rose 1% for Hispanic and 3% for non-Hispanic White women from 2020 to 2021 and declined 2% for non-Hispanic Asian and 3% for non-Hispanic Black and non-Hispanic AIAN women. The

decline in the rate for non-Hispanic NHOPI women (1%) was not significant.

Age of mother

Birth rates declined for women in age groups 15–24, rose for women aged 25–44, and were unchanged for the youngest (10–14) and the oldest (45–49) women from 2020 to 2021.

Teenagers—The birth rate for females aged 15–19 in the United States in 2021 was 13.9 births per 1,000 females, down 7% from 2020 (15.0) and another record low (Table 2, Figure 2) (13,16,17). Since 2009, the teen birth rate has fallen to a new low each year. The rate for this group has declined 67% since 2007 (41.5), the most recent high, and 78% since the 1991 high (61.8). The number of births to teenagers aged 15–19 was 146,973 in 2021, down 7% from 2020 (158,043) (15).

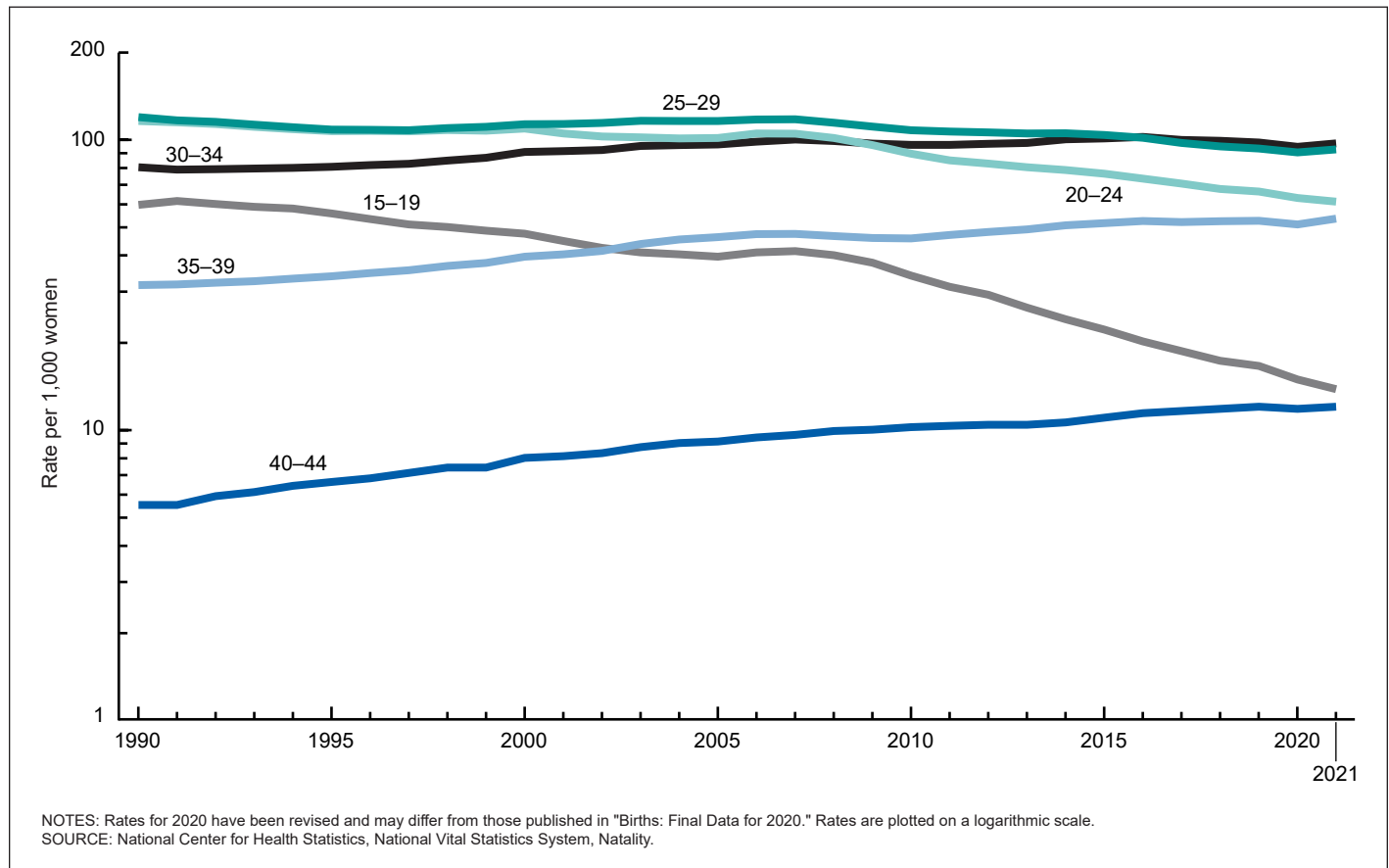
The 2021 birth rates for teenagers aged 15–17 and 18–19 were 5.6 and 26.6 births, respectively, down 8% and 6% from 2020, record lows for both groups. Rates for these age groups have fallen 74% and 63%, respectively, since 2007, and by 85% and 72% since 1991. The birth rate for females aged 10–14 was unchanged in 2021 at 0.2 births per 1,000 females.

Among race and Hispanic-origin groups, the birth rates for teenagers aged 15–19 declined for most groups, down 7% for non-Hispanic White, 8% for non-Hispanic Black and Hispanic, and 9% for non-Hispanic Asian females from 2020 to 2021. The declines in rates for non-Hispanic NHOPI (1%) and non-Hispanic AIAN (4%) females were not significant.

Women in their 20s—The birth rate for women aged 20–24 was 61.5 births per 1,000 women in 2021, down 3% from 2020 (63.3), and another record low (Table 2) (13,16). The rate for women in this age group has declined since 2006. The number of births to women in their early 20s also declined 3% from 2020 (15). The rate for women aged 25–29 was 93.0 births, up 2% from 2020 (90.9). The rate for women in this age group has declined for all but one year from 2007 to 2020 (13). The number of births to women aged 25–29 was essentially unchanged from 2020 to 2021 (see Tables 3 and 4 for 2020 data) (15).

Women in their 30s—The birth rate for women aged 30–34 was 97.6 births per 1,000 women in 2021, up 3% from 2020 (94.9); this follows an annual decline in the rate from 2017 to 2020 (13,16). The 2021 rate for women aged 30–34 was higher than the rate for women aged 25–29 for the sixth consecutive year since reliable national records were available (1940) (13,16). The number of births to women aged 30–34 rose 4% from 2020 to 2021. The birth rate for women aged 35–39 was 53.7 births in 2021, up 5% from 2020 (51.3) (Table 2). The number of births to women aged 35–39 rose 5% in 2021 (see Tables 3 and 4 for 2020 data) (15).

Women in their 40s—The birth rate for women aged 40–44 was 12.0 births per 1,000 women in 2021, up 2% from 2020 (11.8) (Table 2); this increase follows a decline in the rate for this group in 2020, the first since 1981 (13,16). The number of births to women in their early 40s rose 5% from 2020 to 2021. The birth rate for women aged 45–49 (includes births to women aged 50 and over) was 0.9 births in 2021, unchanged from 2020. The number of births to women aged 45 and over was essentially unchanged from 2020 to 2021.

Figure 2. Birth rates, by selected age of mother: United States, 1990–2021

Women aged 50 and over—The birth rate for women aged 50–54 was unchanged at 1.0 births per 10,000 women in 2021. Because of the small number of births to women in this age group, the birth rate for women aged 50–54 is expressed per 10,000 women. For rates shown elsewhere in this report, births to women aged 50 and over are included with births to women aged 45–49 when computing birth rates by age of mother (the denominator for the rate is women aged 45–49). There were 1,041 births to women aged 50 and over in 2021, up from 995 in 2020, a nonsignificant increase (Table 3) (15). The number of births to women in this age group has generally increased since 1997 (when 144 births were reported).

Live-birth order

The first-birth rate for the United States was 21.5 births per 1,000 women aged 15–44 in 2021, up 1% from 2020 (21.3) (see Tables 3 and 4 for the number of births and Table 5 for birth rates). First-birth rates declined for females in their teens (7% for females aged 15–19) and early 20s (2% for women aged 20–24) and rose for women in their late 20s (4% for women aged 25–29), 30s (4% for women aged 30–34 and 5% for women aged 35–39), and early 40s (4% for women aged 40–44). The rate rose from 0.2 to 0.3 for women aged 45–49. The first-birth rate for females aged 10–14 was unchanged in 2021 (0.2) (15).

Mean age of mother

In 2021, the mean age of mothers at first birth was 27.3 years, an increase from 27.1 in 2020, and another record high for the nation (Tables 11, 12, and I–6) (13,16). The mean age at first birth is the arithmetic average of the age of mothers at the time of birth and is computed directly from the frequency of first births by age of mother. The increase in the mean age in 2021 reflects, in part, the decline in the number of first births to women in their teens and early 20s and the concurrent rise in first births to women in their late 20s, 30s, and 40s (15).

Mean age at first birth increased for nearly all race and Hispanic-origin groups in 2021, rising to 25.5 years for Hispanic and non-Hispanic Black, 28.1 for non-Hispanic White, and 31.2 for non-Hispanic Asian women (15). The increases in the average age at first birth for non-Hispanic AIAN women, to 23.9 in 2021, and non-Hispanic NHOPI women, 25.2, were not significant. Among the specified Hispanic groups, average ages increased to 25.0 for Mexican, 25.6 for Puerto Rican, 26.4 for Dominican, and 28.5 for Cuban women (15). The age at first birth for Central and South American women was unchanged in 2021 at 26.3.

Total fertility rate

The **total fertility rate** (TFR) for the United States in 2021 was 1,664.0 births per 1,000 women, up 1% from 2020 (1,641.5) (Table 2). This is the first increase in the TFR since 2014 (up by less than 1% between 2013 and 2014). Although it follows

a 4% decline from 2019 to 2020, the rate had declined by an average of 2% per year from 2014 to 2019 and by an average of 2% per year from 2007 to 2013. The TFR estimates the number of births that a hypothetical group of 1,000 women would have over their lifetimes, based on age-specific birth rates in a given year. Because it is calculated from age-specific birth rates, TFR is age adjusted and can be compared for populations across time, population groups, and geographic areas.

Among the race and Hispanic-origin groups, the TFR rose 1% for Hispanic and 3% for non-Hispanic White women from 2020 to 2021 and declined 2% for non-Hispanic Black and non-Hispanic Asian and 3% for non-Hispanic AIAN women. The decline in the rate for non-Hispanic NHOPI women (less than 1%) was not significant.

The TFR for the nation in 2021 remained below “replacement,” the level at which a given generation can exactly replace itself (generally considered to be 2,100 births per 1,000 women). The U.S. TFR has generally been below replacement since 1971 and has consistently been below replacement since 2008 (13,16). The TFR was below replacement for all race and Hispanic-origin groups in 2021, except for non-Hispanic NHOPI women (2,131.0 births) (Table 2).

Births and birth rates by state

The GFR, the number of births per 1,000 women aged 15–44, rose in 16 states from 2020 to 2021 and declined in 1 state, New Mexico. Increases of 1% to 2% were reported in 10 states (California, Colorado, Florida, Minnesota, North Carolina, Oregon, Pennsylvania, Tennessee, Virginia, and Wisconsin), of 3% to 4% in 3 states (New Jersey, New York, and Rhode Island), and of 5% to 6% in 3 states (Connecticut, Massachusetts, and New Hampshire). GFRs were essentially unchanged in the remaining 33 states and D.C. Rates among the states ranged from 44.9 births per 1,000 women aged 15–44 in Vermont to 68.6 in South Dakota. (See Tables 6 and 7 for the number of births and Table 8 for birth rates). Among the U.S. territories, the GFR declined in Guam; declines in Puerto Rico, U.S. Virgin Islands, and Northern Marianas were not significant. For the number of births by state in 2021, see Tables 6 and 7.

Birth rates for teenagers by state

In 2021, the birth rate for teenagers aged 15–19 declined in 29 states (Arizona, California, Colorado, Florida, Georgia, Idaho, Illinois, Indiana, Kansas, Maine, Maryland, Michigan, Mississippi, Missouri, Nevada, New Hampshire, New Jersey, New Mexico, New York, North Carolina, Ohio, Pennsylvania, South Carolina, Tennessee, Texas, Utah, Virginia, Washington, and Wisconsin), with declines ranging from 3% for New York to 24% for Maine. Rates were essentially unchanged in the remaining 21 states and D.C. Rates among the states ranged from 5.4 births per 1,000 in New Hampshire to 26.5 in Arkansas (Table 8). The wide range in state-specific teen birth rates is consistent with patterns observed in previous analyses (17,18). Teen birth rates declined for Puerto Rico and Guam and were essentially unchanged for the U.S. Virgin Islands and Northern Marianas. Rates among the territories ranged from 13.2 births per 1,000 teenagers in Puerto Rico to 23.8 in Guam.

Births to unmarried women

The birth rate for unmarried women was 37.8 births per 1,000 unmarried women aged 15–44 in 2021, down 2% from 2020 (38.4) (Table 10). The 2021 nonmarital birth rate was 27% lower than the peak of 51.8 in 2007 and 2008 (13). (See Technical Notes for a description of the adjustments to calculations of rates by marital status beginning with 2017).

The birth rate for married women increased in 2021, up 3% to 83.6 per 1,000 married women aged 15–44, from 80.8 in 2020. The marital birth rate declined 4% over the period 2005–2010 but rose 6% from 2010 to 2016 before declining 6% through 2020 (13).

The percentage of all births to unmarried women was 40.0% in 2021, down 1% from 2020 (40.5%) (Table 9) (15). The percentage of all births to unmarried women peaked in 2009 at 41.0% (13,15).

The percentage of nonmarital births in 2021 increased from 2020 for non-Hispanic Asian (12.6% in 2021) and Hispanic (53.2%) women. The percentage decreased for non-Hispanic White (27.5%), non-Hispanic Black (70.1%), and non-Hispanic AIAN (68.5%) women. The percentage was unchanged for non-Hispanic NHOPI women (51.8%). The number of nonmarital births was essentially unchanged from 2020 (1,464,121) to 2021 (1,464,455) (15).

Nonmarital birth rates declined from 2020 to 2021 for women in age groups under 30, with the rate for teenagers aged 15–19 dropping 7% (to 13.0 per 1,000 in 2021), and the rate for females aged 15–17 declining to another all-time low (5.6). Conversely, the nonmarital birth rate reached a historic peak of 38.2 for women aged 35–39. The rates were essentially unchanged for women aged 30–34 (58.5) and 40–44 (11.4).

Compositional differences by race and Hispanic origin and maternal age among states are major contributing factors to the geographic variation in the percentage of births to unmarried mothers (Table 1–7). In 2021, the percentages of unmarried births ranged from about one in five births in Utah (19.5%) to more than one in two births in Louisiana (54.5%), Mississippi (54.8%), and New Mexico (52.4%).

Cigarette Smoking Before and During Pregnancy (Tables 13–15)

Of the women who gave birth in 2021, 4.6% reported smoking cigarettes (tobacco only) at any time while pregnant, a 16% decline from 2020 (5.5%) (Table 15) (15). Cigarette smoking was most common earlier in pregnancy: 4.5% of women smoked in their first trimester, 3.9% in their second, and 3.7% in their third. Of the 5.9% of women who reported smoking in the 3 months before becoming pregnant, 23.3% quit smoking before pregnancy.

By race and Hispanic origin, 6.7% of non-Hispanic White women reported smoking any time during pregnancy, down 17% from 2020; 3.8% of non-Hispanic Black women reported smoking any time during pregnancy, down 16%; 1.2% of Hispanic women reported smoking during pregnancy, down 14% from 2020. See Tables 13 and 14 for 2021 smoking levels among

other race and Hispanic-origin groups. Rates of quitting smoking before pregnancy also varied by race and Hispanic origin: 21.5% of non-Hispanic White, 24.1% of non-Hispanic Black, and 36.8% of Hispanic women who smoked during the 3 months before pregnancy did not smoke while pregnant.

By maternal age, smoking rates during pregnancy were highest among women aged 20–24 (6.0%), women aged 25–29 (5.2%), and women under age 20 (4.5%). Tobacco use during pregnancy was less common among older women, with 3.3% of women aged 40–54 and 3.6% of women aged 35–39 reporting smoking during pregnancy (Table 15).

Medical and Health Services Utilization and Source of Payment for the Delivery (Tables 13–19)

Use and timing of prenatal care

Among women who gave birth in 2021, 78.3% began prenatal care in the first trimester of pregnancy, up from 77.7% in 2020. Late (beginning in the third trimester) or no prenatal care increased in 2021 to 6.3%, from 6.2% in 2020 (Table 16) (15).

Prenatal care beginning in the first trimester increased for the three largest race and Hispanic-origin groups: non-Hispanic White (from 82.8% in 2020 to 83.2% in 2021), non-Hispanic Black (from 68.4% to 69.7%), and Hispanic (from 72.3% to 72.5%) (Table 16) (15). Late or no prenatal care increased for non-Hispanic White (4.5% to 4.6%) and Hispanic (7.9% to 8.4%) women and was unchanged for non-Hispanic Black women (9.1%). Timing of prenatal care continued to vary by race and Hispanic origin in 2021. First trimester care ranged from 51.5% for non-Hispanic NHOPI women to 83.5% for non-Hispanic Asian women; late or no prenatal care ranged from 4.1% for non-Hispanic Asian women to 21.0% for non-Hispanic NHOPI women (Table 13).

Initiation of prenatal care in the first trimester was higher in 2021 than in 2020 for women in all age groups, increasing from 61.5% to 61.6% (change was not significant) for women under age 20, from 71.4% to 72.3% for women aged 20–24, and from 77.9% to 78.6% for women aged 25–29. For women in age groups over 30, first trimester care increased from 82.0% to 82.2% for women aged 30–34, from 81.4% to 81.7% for women aged 35–39, and from 77.6% to 78.0% for women aged 40 and over (Table 16) (15).

Method of delivery

Cesarean delivery

In 2021, the cesarean delivery rate increased 1% to 32.1%, from 31.8% in 2020; this is the second increase in a row after the rate had declined in 2018 and 2019 (Table 17). The cesarean delivery rate peaked in 2009 at 32.9%, after increasing every year since 1996 (20.7%) (13).

The cesarean delivery rate increased 1% for each of the three largest race and Hispanic-origin groups, from 30.8% in 2020 to 31.0% in 2021 for non-Hispanic White women, from 36.3% to 36.8% for non-Hispanic Black women, and from 31.4% to 31.6% for Hispanic women. Non-Hispanic Black women continued to have the highest cesarean delivery rate (36.8%) in 2021. Tables 13 and 14 show cesarean delivery rates for more detailed race and Hispanic-origin groups.

Changes from 2020 to 2021 in cesarean delivery rates varied by maternal age group (Table 18). Women aged 20–24 and in their 30s were more likely to have a cesarean delivery in 2021 than in 2020 (25.3% to 25.4% for women aged 20–24, 33.7% to 33.8% for women aged 30–34, and 39.7% to 39.9% for women aged 35–39). Rates for other age groups were essentially unchanged. Cesarean delivery continued to be higher among older women compared with younger mothers; women aged 40 and over were more than twice as likely to deliver by cesarean section (47.5%) than women under age 20 (19.4%).

Low-risk cesarean delivery—The low-risk cesarean delivery rate increased 2% in 2021, from 25.9% (2020) to 26.3%. The low-risk cesarean delivery rate is cesarean delivery among nulliparous (first birth), term (37 or more completed weeks based on the obstetric estimate), singleton (one fetus), and cephalic (head-first) births. See Tables 13, 14, 17, and 18 for details by age and race and Hispanic origin of the mother.

Primary cesarean delivery—In 2021, the primary cesarean delivery rate, which measures cesarean deliveries among women who have not had a previous cesarean delivery, was 22.3%, up 2% from 21.9% in 2020 (Tables 17 and 18). A recent report describes recent trends in primary and repeat cesarean delivery (19).

Vaginal birth after previous cesarean delivery (VBAC)—The VBAC rate measures vaginal births among women with a previous cesarean delivery. In 2021, 14.2% of women with a previous cesarean delivered vaginally, up 2% from 13.9% in 2020; the rate has increased every year since 2016, when national data became available. See a recent report for changes in VBAC by race and Hispanic origin and see Tables 17 and 18 for details (4).

Source of payment for the delivery

The principal source of payment for the delivery of most births in 2021 continued to be either private insurance or Medicaid; however, the percentage of births covered by private insurance increased from 2020 (from 50.6% to 51.7%), and the percentage of births covered by Medicaid declined (from 42.0% to 41.0%). The category “self-pay,” generally considered to indicate uninsured deliveries, accounted for 3.9% of 2021 births, unchanged from 2020. The remainder of births were covered by other insurance (3.4% of births, down from 3.5% in 2020); other insurance includes Indian Health Service, CHAMPUS or TRICARE, other government (federal, state, or local), or charity (Table 19) (15).

The percentage of births covered by private insurance increased from 2020 to 2021 for each of the three largest race and Hispanic-origin groups (15). In 2021, the percentage of mothers using private insurance was 30.8% for non-Hispanic Black women and 32.1% for Hispanic women, compared with 65.0% for non-Hispanic White women. The percentage of births

covered by Medicaid decreased from 2020 to 2021 for each of the three largest race and Hispanic-origin groups (15). In 2021, Medicaid coverage ranged from 28.1% for non-Hispanic White women to 58.1% for Hispanic women and 64.0% for non-Hispanic Black women. See [Tables 13 and 14](#) for information for additional race and Hispanic-origin groups.

By age of mother, Medicaid as the source of payment increased for women under 20 (78.4% to 78.8%); decreased for women aged 25–29 (44.7% to 43.9%), aged 30–34 (29.9% to 29.4%), aged 35–39 (27.6% to 26.8%), and aged 40–54 (30.6% to 30.0%); it remained unchanged for women aged 20–24 between 2020 and 2021 (15). The percentages of births with Medicaid as the source of payment ranged from 26.8% for women aged 35–39 to 78.8% for women under age 20. Private insurance as the source of payment for the delivery increased in 2020 for women aged 20–54. Percentages with private insurance ranged from 14.7% for women under age 20 to 66.3% for women aged 35–39.

Infant Health Characteristics (Tables 20–25)

Period of gestation

The U.S. **preterm birth rate** rose 4% in 2021 to 10.49%, the highest level reported since at least 2007. (National data based on the obstetric estimate of gestation are available only from 2007 [20]; see Technical Notes.) The preterm birth rate (percentage of all births delivered at less than 37 completed weeks of gestation) declined steadily from 2007 (10.44%) to 2014 (9.57%) (13), rose 7% through 2019 and then declined 1% between 2019 (10.23%) and 2020 (10.09%) ([Table 20](#)) (21).

Increases of 4% between 2020 and 2021 were seen among infants born **early preterm** (less than 34 weeks), up from 2.70% to 2.81%, and **late preterm** (34–36 weeks), from 7.40% to 7.67%. The early preterm rate is the highest reported since 2012; the late preterm birth rate is the highest since comparable data have been available (2007) (13,20).

Changes in the distribution of births delivered at **term and later** (37 weeks and higher) were also observed from 2020

to 2021. Following trends generally observed since 2014, the percentage of infants born early term (37–38 weeks) rose by 4% in 2021, from 27.78% to 28.76%, whereas full-term births (39–40 weeks) declined by 2% (from 57.00% to 55.90%) and late-term births (41 weeks) by 6% (4.88% to 4.61%). From 2007 to 2014, the early-term birth rate had generally declined, and the full-term rate had increased (13). The percentage of post-term (42 weeks and higher) births generally declined from 2007 to 2019 but has been unchanged at 0.25% for 2019–2021 ([Table 20](#)). Increases in early-term and declines in full- and late-term births were seen for the three largest race and Hispanic-origin groups for 2020–2021.

Preterm birth rates rose by 3%–4% for births to non-Hispanic White mothers (from 9.10% to 9.50%), non-Hispanic Black mothers (14.36% to 14.75%), and Hispanic mothers (9.84% to 10.23%) between 2020 and 2021 ([Table 20](#)). For 2021, preterm birth rates for the race and Hispanic-origin groups ranged from a high of 14.75% for births to non-Hispanic Black mothers to a low of 9.23% among non-Hispanic Asian mothers ([Table 13](#)). Preterm levels for the Hispanic subgroups ranged from 9.78% (Central and South American) to 11.55% (Puerto Rican) ([Table 14](#)).

It can also be important to analyze births in singleton deliveries separately from all births because of the shorter average gestations of multiple births and their accordant potential influence on preterm birth rates (also see “Multiple births” in this report). The 2021 **preterm birth rate for singleton births only** was 8.76%, up 4% from the 2020 level of 8.42%. From 2007 to 2014, the singleton preterm rate declined from 8.59% to 7.74% but then rose 8% from 2015 (7.82%) to 2019 (8.47%) (see [Table](#) for 2021 data) (13,15).

Increases in preterm birth rates were observed in 26 states between 2020 and 2021. Nonsignificant increases were reported for an additional 20 states and D.C and nonsignificant declines were reported in 4 states; see [Figure 3](#) and [Table I–19](#) for 2021 data.

Birthweight

The percentage of infants born low birthweight (LBW; less than 2,500 grams or 5 pounds, 8 ounces) rose 3% in 2021 to 8.52%, from 8.24% in 2020. The LBW rate had declined from

Table. Gestational age and birthweight characteristics, by plurality: United States, 2021

Plurality	Number of births	Early preterm ¹	Preterm ²	Percent	
				Very low birthweight ³	Low birthweight ⁴
All births	3,664,292	2.81	10.49	1.38	8.52
Singletons	3,547,198	2.20	8.76	1.09	6.93
Twins	114,161	20.28	62.05	9.44	55.92
Triplets	2,785	65.61	98.60	34.91	95.36
Quadruplets	133	97.74	99.25	69.92	99.25
Quintuplets and higher-order multiples	15	100.00	100.00	73.33	100.00

¹Less than 34 completed weeks of gestation.

²Less than 37 completed weeks of gestation.

³Less than 1,500 grams.

⁴Less than 2,500 grams.

2019 (8.31%) to 2020. The LBW rate had risen nearly 20% from 1990 to 2006, declined from 2007 to 2012, and rose 4% from 2014 (8.00%) to 2019 (Tables 22 and 23) (13).

The **very low birthweight** (VLBW; less than 1,500 grams) rate rose to 1.38% in 2021 after declining to 1.34% in 2020, returning to levels reported for 2018 and 2019. These VLBW rates are down from the high of 1.49% for 2005–2007 (13). The percentage of **moderately low birthweight** infants (1,500–2,499 grams) increased 3% in 2021 to 7.14% from 6.90% in 2020; moderately low birthweight levels for 2016–2021 have matched or surpassed the peak reported for 2006 (6.77%) (Table 22) (13).

Between 2019 and 2020, LBW rates rose among births to each of the largest race and Hispanic-origin groups: non-Hispanic White (6.84% to 7.03%), non-Hispanic Black (14.19% to 14.66%), and Hispanic (7.40% to 7.82%) women. Since 2016, LBW rates have fluctuated for all groups but have increased a total of 1% for non-Hispanic White women (from 6.97%) and 7% for non-Hispanic Black (from 13.68%) and Hispanic (7.32%) women (Table 22). See Tables 13, 14, I–21, and I–22 for 2020 VLBW and LBW rates by state and by race and Hispanic origin.

The LBW rate among **singleton births only** increased 4%, from 6.68% in 2020 to 6.93% in 2021 (15); see Table for 2021 data. It can be informative to examine births in singleton deliveries separately because multiple births tend to be born smaller than singleton births, and changes in multiple-birth incidence can influence overall LBW levels.

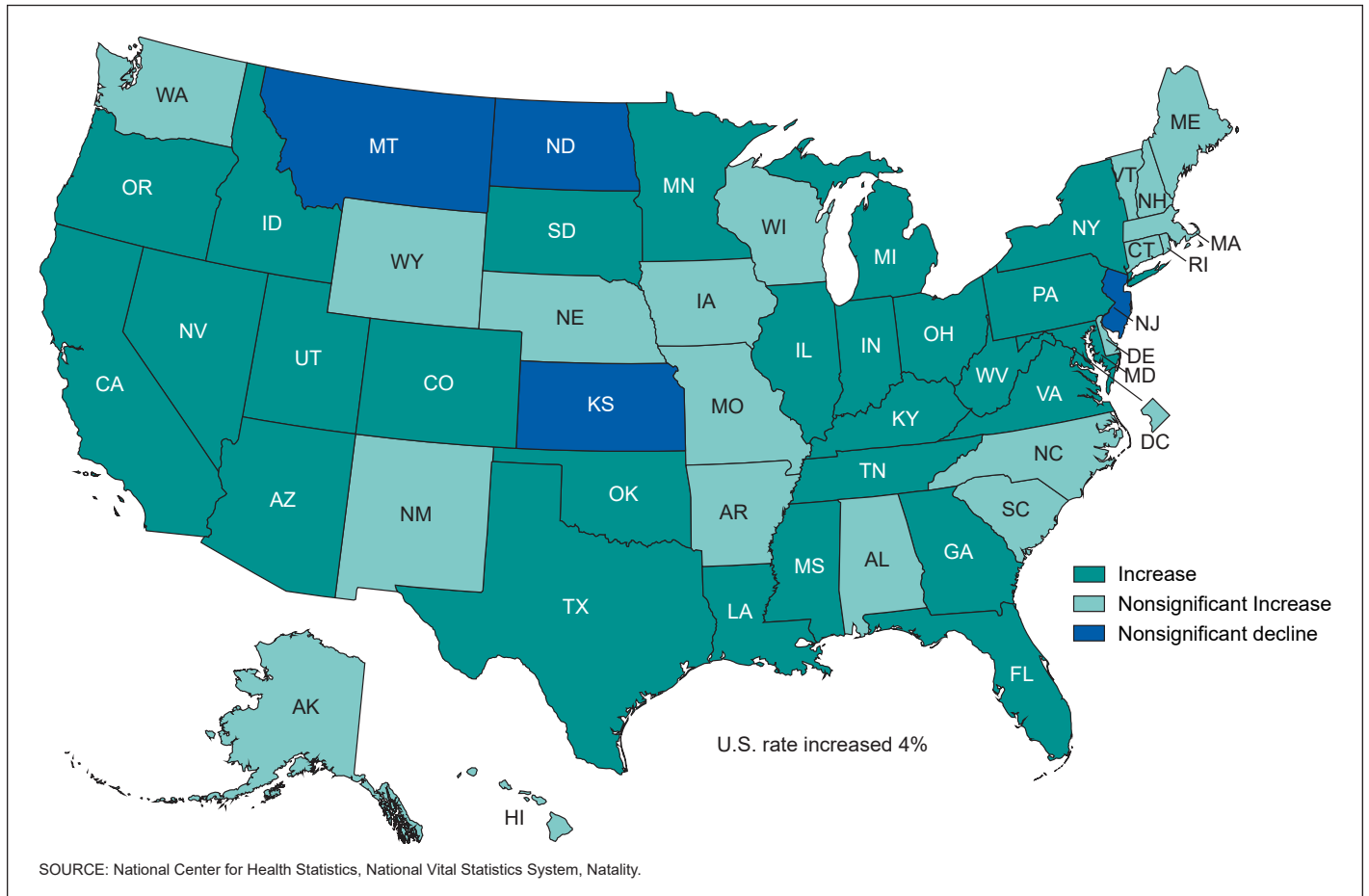
Multiple births

The 2021 **twin birth rate** was 31.2 twins per 1,000 births, a nonsignificant increase from the 2020 rate of 31.1 (Tables 24 and 25). The twinning rate (births in twin deliveries per 1,000 total births) rose 76% from 1980 to 2009 (from 18.9 to 33.2 per 1,000), was generally stable from 2009 to 2012, and then rose for 2013 and 2014 before declining 8% from 2014 to 2020. The 2020 and 2021 rates are the lowest in almost 2 decades (13).

The **triplet and higher-order multiple birth rate** (triplet/+) was 80.0 per 100,000 births for 2021, a nonsignificant increase from 2020 (79.6). The 2021 rate of triplet/+ births is down 59% from the 1998 peak (193.5) (13). The triplet/+ birth rate (number of triplets, quadruplets, and quintuplets and other higher-order multiples per 100,000 births) rose more than 400% from 1980 to 1998 (Tables 24 and 25) (13).

There were 114,161 **infants born in twin deliveries** in 2021, an increase of 2% from the number in 2020 (Table 25). The number of triplet/+ infants born in 2021 also rose by 2% from 2020 to 2,933. The **number of triplet/+ births** is down 62% since the 2003 high when 7,663 triplet/+ births were reported (13). The 2021 number included 2,785 triplets, 133 quadruplets, and 15 quintuplet and higher-order multiple births. See Table for the number of births and percentages of preterm and LBW births by specified plurality.

Figure 3. Change in preterm birth rates, by state: United States, 2020 and 2021



Twin birth rates were essentially unchanged for the largest race and Hispanic-origin groups from 2020 to 2021: non-Hispanic White (from 32.6 to 32.5 per 1,000), non-Hispanic Black (40.7 to 40.6), and Hispanic (23.9 to 24.2) women. Triplet/+ birth rates remained essentially unchanged for non-Hispanic White (90.3 to 93.3 per 100,000) and Hispanic (56.3 to 62.5) women and declined for non-Hispanic Black women (98.3 to 81.9) (Table 24; also see Tables 13 and 14 for 2021 twin and triplet/+ rates for additional race and Hispanic-origin groups). For state-specific twin and triplet/+ rates, see Table I–23.

References

- Hamilton BE, Martin JA, Osterman MJK. Births: Provisional data for 2021. *Vital Statistics Rapid Release*; no 20. Hyattsville, MD: National Center for Health Statistics. May 2022. DOI: <https://dx.doi.org/10.15620/cdc:116027>.
- Hamilton BE, Osterman MJK, Martin JA. Changes in births by month: United States, 2021. *Vital Statistics Rapid Release*; no 22. Hyattsville, MD: National Center for Health Statistics. July 2022.
- National Center for Health Statistics. Provisional estimates for selected maternal and infant outcomes by month, 2019–2022. Available from: <https://www.cdc.gov/nchs/covid19/technical-notes-outcomes.htm>.
- Martin JA, Hamilton BE, Osterman MJK. Births in the United States, 2021. *NCHS Data Brief*, no 442. Hyattsville, MD: National Center for Health Statistics. 2022.
- National Center for Health Statistics. Vital statistics online data portal. Birth data files. Available from: https://www.cdc.gov/nchs/data_access/VitalStatsOnline.htm.
- National Center for Health Statistics. Data release policy for vital statistics micro-data files. Available from: https://www.cdc.gov/nchs/nvss/dvs_data_release.htm.
- Centers for Disease Control and Prevention. CDC WONDER. Natality information: Live births. Available from: <https://wonder.cdc.gov/Natality.html>.
- Martin JA, Wilson EC, Osterman MJK, Saadi EW, Sutton SR, Hamilton BE. Assessing the quality of medical and health data from the 2003 birth certificate revision: Results from two states. *National Vital Statistics Reports*; vol 62 no 2. Hyattsville, MD: National Center for Health Statistics. 2013.
- Gregory ECW, Martin JA, Argov EL, Osterman MJK. Assessing the quality of medical and health data from the 2003 birth certificate revision: Results from New York City. *National Vital Statistics Reports*; vol 68 no 8. Hyattsville, MD: National Center for Health Statistics. 2019.
- National Center for Health Statistics. User guide to the 2021 natality public use file. Available from: https://ftp.cdc.gov/pub/Health_Statistics/NCHS/Dataset_Documentation/DVS/natality/UserGuide2021.pdf.
- National Center for Health Statistics. 2003 revisions of the U.S. Standard Certificates of Live Birth, Death, and Fetal Death. Available from: https://www.cdc.gov/nchs/nvss/vital_certificate_revisions.htm.
- Office of Management and Budget. Revisions to the standards for the classification of federal data on race and ethnicity. *Fed Regist* 62(210):58782–90. 1997.
- Martin JA, Hamilton BE, Osterman MJK, Driscoll AK, Mathews TJ. Births: Final data for 2015. *National Vital Statistics Reports*; vol 66 no 1. Hyattsville, MD: National Center for Health Statistics. 2017. Available from: https://www.cdc.gov/nchs/data/nvsr/nvsr66/nvsr66_01.pdf.
- Martin JA, Hamilton BE, Osterman MJK, Driscoll AK, Drake P. Births: Final data for 2016. *National Vital Statistics Reports*; vol 67 no 1. Hyattsville, MD: National Center for Health Statistics. 2018. Available from: https://www.cdc.gov/nchs/data/nvsr/nvsr67/nvsr67_01.pdf.
- Osterman MJK, Hamilton BE, Martin JA, Driscoll AK, Valenzuela CP. Births: Final data for 2020. *National Vital Statistics Reports*; vol 70 no 17. Hyattsville, MD: National Center for Health Statistics. 2022. DOI: <https://dx.doi.org/10.15620/cdc:112078>.
- National Center for Health Statistics. Vital statistics of the United States, 2003, Volume I, Natality. Available from: https://www.cdc.gov/nchs/products/vsus/vsus_1980_2003.htm.
- Ventura SJ, Hamilton BE, Mathews TJ. National and state patterns of teen births in the United States, 1940–2013. *National Vital Statistics Reports*; vol 63 no 4. Hyattsville, MD: National Center for Health Statistics. 2014. Available from: https://www.cdc.gov/nchs/data/nvsr/nvsr63/nvsr63_04.pdf.
- Hamilton BE, Rossen LM, Branum AM. Teen birth rates for urban and rural areas in the United States, 2007–2015. *NCHS Data Brief*, no 264. Hyattsville, MD: National Center for Health Statistics. 2016. Available from: <https://www.cdc.gov/nchs/data/databriefs/db264.pdf>.
- Osterman MJK. Changes in primary and repeat cesarean delivery: United States, 2016–2021. *Vital Statistics Rapid Release*; no 21. Hyattsville, MD: National Center for Health Statistics. July 2022.
- Martin JA, Osterman MJK, Kirmeyer SE, Gregory ECW. Measuring gestational age in vital statistics data: Transitioning to the obstetric estimate. *National Vital Statistics Reports*; vol 64 no 5. Hyattsville, MD: National Center for Health Statistics. 2015.
- Martin JA, Osterman MJK. Exploring the decline in the singleton preterm birth rate in the United States, 2019–2022. *NCHS Data Brief*, no 430. Hyattsville, MD: National Center for Health Statistics. 2022. DOI: <https://dx.doi.org/10.15620/cdc:112969>.
- National Center for Health Statistics. Report of the Panel to Evaluate the U.S. Standard Certificates. 2000.
- Ramirez RR, Ennis SR. Item nonresponse, allocation, and data editing of the question on Hispanic origin in the American Community Survey (ACS): 2000 to 2007. U.S. Census Bureau, Population Division. Working Paper no 86. 2010.
- U.S. Census Bureau. 2021 population estimates. Annual state resident population estimates for 6 race groups (5 race alone groups and two or more races) by age, sex, and Hispanic origin: April 1, 2020 to July 1, 2021 (SC-EST2021-ALLDATA6). 2022. Available from: <https://www2.census.gov/programs-surveys/popest/datasets/2020-2021/state/asrh/sc-est2021-alldata6.csv>.
- U.S. Census Bureau. International data base. Population by single years of age and sex, 2021. 2022. Available from: https://www.census.gov/data-tools/demo/idb/#/country?COUNTRY_YEAR=2021&COUNTRY_YR_ANIM=2021.
- U.S. Census Bureau. 2021 population estimates. Annual estimates of the resident population by single year of age and sex for Puerto Rico Commonwealth: April 1, 2020, to July 1, 2021. 2022. Available from: <https://www2.census.gov/programs-surveys/popest/tables/2020-2021/puerto-rico/asrh/prc-est2021-syases.xlsx>.
- U.S. Census Bureau. Microdata access. 2020 CPS annual social and economic (March) supplement. 2020. Available from: <https://data.census.gov/mdat/#/>.
- U.S. Census Bureau. Microdata access. 2021 CPS annual social and economic (March) supplement. 2022. Available from: <https://data.census.gov/mdat/#/>.

29. Ventura SJ, Bachrach CA. Nonmarital childbearing in the United States, 1940–99. National Vital Statistics Reports; vol 48 no 16. Hyattsville, MD: National Center for Health Statistics. 2000.
30. U.S. Census Bureau. American Community Survey (ACS), 2021 1-year estimates (st31002_2021_010_flags), by sex, age, nativity, and Hispanic origin. Population estimates for 2021 based on unpublished tabulations. [Forthcoming].
31. Parker JD, Taliq M, Malec DJ, Beresovsky V, Carroll M, Gonzalez Jr JF, et al. National Center for Health Statistics data presentation standards for proportions. National Center for Health Statistics. Vital Health Stat 2(175). 2017. Available from: https://www.cdc.gov/nchs/data/series/sr_02/sr02_175.pdf.
32. National Center for Health Statistics. User guide to the 2010 natality public use file. Available from: https://ftp.cdc.gov/pub/Health_Statistics/NCHS/Dataset_Documentation/DVS/natality/UserGuide2010.pdf.
33. National Center for Health Statistics. Guide to completing the facility worksheets for the certificate of live birth and report of fetal death (2003 revision). 2022 update. Available from: <https://www.cdc.gov/nchs/data/dvs/GuidetoCompleteFacilityWks.pdf>.

List of Detailed Tables

Report tables

1. Births and birth rates: United States, 2010–2021, and by race and Hispanic origin: United States, 2016–2021	12
2. Birth rates, by age of mother: United States, 2010–2021, and by age and race and Hispanic origin of mother: United States, 2016–2021	13
3. Births, by age of mother, live-birth order, and race and Hispanic origin of mother: United States, 2021	15
4. Births, by age of mother, live-birth order, and Hispanic origin of mother: United States, 2021	17
5. Birth rates, by age of mother, live-birth order, and race and Hispanic origin of mother: United States, 2021	19
6. Births, by race and Hispanic origin of mother: United States, each state and territory, 2021	21
7. Births, by Hispanic origin of mother: United States, each state and territory, 2021	23
8. Birth rates, by age of mother: United States, each state and territory, 2021	25
9. Births to unmarried women, by age and race and Hispanic origin of mother: United States, 2021	27
10. Birth rates for unmarried women: United States, 2010–2021, and by age and race and Hispanic origin of mother: United States, 2016–2021	28
11. Selected demographic characteristics of births, by race and Hispanic origin of mother: United States, 2021	29
12. Selected demographic characteristics of births, by Hispanic origin of mother: United States, 2021	30
13. Selected medical and health characteristics of births, by race and Hispanic origin of mother: United States, 2021	31
14. Selected medical and health characteristics of births, by Hispanic origin of mother: United States, 2021	32
15. Mothers who smoked for the 3 months before pregnancy and anytime during pregnancy and those who quit before and during pregnancy, by age and race and Hispanic origin of mother: United States, 2021	33
16. Trimester prenatal care began, by age and race and Hispanic origin of mother: United States, 2021	35
17. Births, by method of delivery: United States, 2010–2021, and by race and Hispanic origin of mother: United States, 2016–2021	36
18. Births, by method of delivery and age and race and Hispanic origin of mother: United States, 2021	38
19. Principal source of payment for the delivery, by age and race and Hispanic origin of mother: United States, 2021	39
20. Births, by gestational age: United States, 2010–2021, and by race and Hispanic origin of mother: United States, 2016–2021	40
21. Births, by gestational age and age and race and Hispanic origin of mother: United States, 2021	42
22. Births, by birthweight: United States, 2010–2021, and by race and Hispanic origin of mother: United States, 2016–2021	44
23. Births, by birthweight and age and race and Hispanic origin of mother: United States, 2021	46
24. Twin, triplet, and higher-order multiple births: United States, 2010–2021, and by race and Hispanic origin of mother: United States, 2016–2021	48
25. Births, by plurality and age and race and Hispanic origin of mother: United States, 2021	49

List of Internet Tables

(Available from: <https://www.cdc.gov/nchs/data/nvsr/nvsr72/nvsr72-01-tables.pdf>.)

I–1. Time of birth, by day of week of birth and race and Hispanic origin of mother: United States, 2021
I–2. Births and seasonally adjusted birth rates, by month: United States, 2021
I–3. Births, by day of week and method of delivery: United States, 2021
I–4. Births, by attendant, place of delivery, and race and Hispanic origin of mother: United States, 2021
I–5. Births occurring at home, by state: United States and each state, 2021
I–6. Mean age of mother, by live-birth order: United States, 2010–2021, and by race and Hispanic origin of mother: United States, 2016–2021
I–7. Births to unmarried women, by race and Hispanic origin of mother: United States, each state and territory, 2021
I–8. Educational attainment of mother, by age and race and Hispanic origin of mother: United States, 2021
I–9. Maternal prepregnancy body mass index, by age and race and Hispanic origin of mother: United States, 2021
I–10. Live births by interval since last live birth, by age and race and Hispanic origin of mother: United States, 2021
I–11. Mother received WIC food for herself during this pregnancy and infant was being breastfed at discharge, by age and race and Hispanic origin of mother: United States, 2021
I–12. Pregnancy risk factors, by age and race and Hispanic origin of mother: United States, 2021
I–13. Infections present or treated during this pregnancy, by age and race and Hispanic origin of mother: United States, 2021
I–14. External cephalic version, by age and race and Hispanic origin of mother: United States, 2021
I–15. Characteristics of labor and delivery, by age and race and Hispanic origin of mother: United States, 2021
I–16. Total cesarean delivery and low-risk cesarean delivery, by race and Hispanic origin of mother: United States, each state and territory, 2021
I–17. Method of delivery, by age and race and Hispanic origin of mother: United States, 2021
I–18. Maternal morbidity, by age and race and Hispanic origin of mother: United States, 2021
I–19. Preterm births, by race and Hispanic origin of mother: United States, each state and territory, 2021
I–20. Late preterm births, by race and Hispanic origin of mother: United States, each state and territory, 2021
I–21. Low birthweight births, by race and Hispanic origin of mother: United States, each state and territory, 2021
I–22. Very low birthweight births, by race and Hispanic origin of mother: United States, each state and territory, 2021
I–23. Twin, triplet, or higher-order multiple births, by state: United States and each state, 2019–2021
I–24. Abnormal conditions of the newborn, by age and race and Hispanic origin of mother: United States, 2021
I–25. Congenital anomalies of the newborn, by age of mother: United States, 2021

Table 1. Births and birth rates: United States, 2010–2021, and by race and Hispanic origin: United States, 2016–2021

[Birth rates are births per 1,000 population in specified group. Fertility rates are births per 1,000 women aged 15–44 in specified group. Populations based on counts enumerated as of April 1 for census year and estimated as of July 1 for all other years]

Race and Hispanic origin and year	Number	Birth rate	Fertility rate
All races and origins ¹			
2021.....	3,664,292	11.0	56.3
2020.....	3,613,647	10.9	55.7
2019.....	3,747,540	11.4	58.3
2018.....	3,791,712	11.6	59.1
2017.....	3,855,500	11.8	60.3
2016.....	3,945,875	12.2	62.0
2015.....	3,978,497	12.4	62.5
2014.....	3,988,076	12.5	62.9
2013.....	3,932,181	12.4	62.5
2012.....	3,952,841	12.6	63.0
2011.....	3,953,590	12.7	63.2
2010.....	3,999,386	13.0	64.1
Non-Hispanic, single race ²			
White:			
2021.....	1,887,656	9.7	54.4
2020.....	1,843,432	9.4	53.0
2019.....	1,915,912	9.8	55.3
2018.....	1,956,413	10.0	56.3
2017.....	1,992,461	10.2	57.2
2016.....	2,056,332	10.5	58.8
Black:			
2021.....	517,889	12.5	57.4
2020.....	529,811	12.8	58.9
2019.....	548,075	13.4	61.4
2018.....	552,029	13.6	62.0
2017.....	560,715	13.9	63.1
2016.....	558,622	14.0	63.3
American Indian or Alaska Native:			
2021.....	26,124	10.8	50.8
2020.....	26,813	11.1	52.6
2019.....	28,450	11.9	56.2
2018.....	29,092	12.2	57.7
2017.....	29,957	12.6	59.5
2016.....	31,452	13.3	62.7
Asian:			
2021.....	213,813	11.2	49.6
2020.....	219,068	11.6	50.4
2019.....	238,769	13.0	55.3
2018.....	240,798	13.2	55.6
2017.....	249,250	13.8	58.0
2016.....	254,471	14.6	61.1
Native Hawaiian or Other Pacific Islander:			
2021.....	9,531	15.8	71.5
2020.....	9,626	16.1	72.5
2019.....	9,770	17.0	74.9
2018.....	9,476	16.6	73.0
2017.....	9,426	16.7	72.8
2016.....	9,342	16.8	72.9
Hispanic ³			
2021.....	885,916	14.1	63.4
2020.....	866,713	14.0	62.9
2019.....	886,467	14.6	65.3
2018.....	886,210	14.8	65.9
2017.....	898,764	15.2	67.6
2016.....	918,447	16.0	70.6

¹Includes births to race and origin groups not shown separately, such as Hispanic single-race White, Hispanic single-race Black, and non-Hispanic multiple-race women, and births with origin not stated.

²Race and Hispanic origin are reported separately on birth certificates; people of Hispanic origin may be of any race. In this table, non-Hispanic women are classified by race. Race categories are consistent with the 1997 Office of Management and Budget standards; see Technical Notes in this report. Single race is defined as only one race reported on the birth certificate.

³Includes all people of Hispanic origin of any race; see Technical Notes.

NOTE: Rates for 2020 have been revised and may differ from those published in "Births: Final Data for 2020"; see Technical Notes.

SOURCE: National Center for Health Statistics, National Vital Statistics System, Natality.

Table 2. Birth rates, by age of mother: United States, 2010–2021, and by age and race and Hispanic origin of mother: United States, 2016–2021

[Total fertility rates are sums of birth rates for 5-year age groups multiplied by 5. Birth rates are births per 1,000 women in specified group. Populations based on counts enumerated as of April 1 for census years and estimated as of July 1 for all other years]

Race and Hispanic origin and year	Total fertility rate	Age of mother									
		10–14	15–19			20–24	25–29	30–34	35–39	40–44	45–49 ¹
			Total	15–17	18–19						
All races and origins²											
2021.....	1,664.0	0.2	13.9	5.6	26.6	61.5	93.0	97.6	53.7	12.0	0.9
2020.....	1,641.5	0.2	15.0	6.1	28.2	63.3	90.9	94.9	51.3	11.8	0.9
2019.....	1,706.0	0.2	16.7	6.7	31.1	66.6	93.7	98.3	52.8	12.0	0.9
2018.....	1,729.5	0.2	17.4	7.2	32.3	68.0	95.3	99.7	52.6	11.8	0.9
2017.....	1,765.5	0.2	18.8	7.9	35.1	71.0	98.0	100.3	52.3	11.6	0.9
2016.....	1,820.5	0.2	20.3	8.8	37.5	73.8	102.1	102.7	52.7	11.4	0.9
2015.....	1,843.5	0.2	22.3	9.9	40.7	76.8	104.3	101.5	51.8	11.0	0.8
2014.....	1,862.5	0.3	24.2	10.9	43.8	79.0	105.8	100.8	51.0	10.6	0.8
2013.....	1,857.5	0.3	26.5	12.3	47.1	80.7	105.5	98.0	49.3	10.4	0.8
2012.....	1,880.5	0.4	29.4	14.1	51.4	83.1	106.5	97.3	48.3	10.4	0.7
2011.....	1,894.5	0.4	31.3	15.4	54.1	85.3	107.2	96.5	47.2	10.3	0.7
2010.....	1,931.0	0.4	34.2	17.3	58.2	90.0	108.3	96.5	45.9	10.2	0.7
Non-Hispanic, single race³											
White:											
2021.....	1,598.5	0.1	9.4	3.2	18.7	52.0	91.8	102.3	52.8	10.5	0.8
2020.....	1,551.0	0.1	10.1	3.4	19.9	53.1	88.2	98.2	49.7	10.1	0.7
2019.....	1,610.5	0.1	11.4	3.8	22.3	56.1	90.8	101.5	51.1	10.3	0.8
2018.....	1,640.0	0.1	12.1	4.1	23.6	57.8	92.9	103.1	51.1	10.2	0.7
2017.....	1,666.5	0.1	13.2	4.6	26.0	59.8	95.3	103.7	50.6	9.9	0.7
2016.....	1,719.0	0.1	14.3	5.2	27.7	62.4	99.3	106.2	51.1	9.7	0.7
Black:											
2021.....	1,675.0	0.3	21.8	9.3	40.6	79.1	91.9	79.7	48.2	12.8	1.2
2020.....	1,713.5	0.3	23.7	10.5	42.7	84.0	93.4	80.4	47.1	12.7	1.1
2019.....	1,775.5	0.4	25.8	11.1	46.4	88.3	96.4	82.9	47.6	12.6	1.1
2018.....	1,792.0	0.4	26.3	11.9	46.9	90.0	97.1	84.1	47.1	12.3	1.1
2017.....	1,824.5	0.4	27.5	12.5	49.8	94.2	99.5	84.5	46.1	11.7	1.0
2016.....	1,832.5	0.5	29.3	13.7	52.5	95.8	100.8	83.0	45.0	11.1	1.0
American Indian or Alaska Native:											
2021.....	1,477.0	0.3	24.2	11.3	44.1	78.7	81.9	66.1	36.2	7.5	0.5
2020.....	1,520.5	0.4	25.2	11.0	46.3	82.2	83.2	68.8	35.9	8.1	0.3
2019.....	1,611.5	0.3	29.2	13.5	51.8	86.7	89.1	72.0	36.6	8.0	0.4
2018.....	1,650.5	0.2	29.7	13.5	52.9	87.7	94.4	73.2	36.1	8.3	0.5
2017.....	1,702.0	0.5	32.9	15.7	58.1	93.6	96.4	72.1	36.3	8.2	0.4
2016.....	1,794.5	0.5	35.1	16.8	62.6	97.2	103.4	77.1	37.1	8.2	0.3
Asian:											
2021.....	1,351.5	*	2.0	0.7	3.8	17.7	60.4	105.0	67.9	15.8	1.5
2020.....	1,379.0	*	2.2	0.8	4.3	20.4	63.9	105.5	66.6	15.5	1.7
2019.....	1,511.0	*	2.7	0.9	5.2	23.1	71.4	115.6	71.0	16.5	1.9
2018.....	1,525.0	*	2.8	1.0	5.4	24.1	73.0	116.5	70.7	16.1	1.8
2017.....	1,597.0	*	3.3	1.1	6.5	26.6	79.6	120.1	71.5	16.5	1.8
2016.....	1,690.5	*	3.9	1.4	7.5	28.9	87.0	127.4	72.8	16.4	1.7
Native Hawaiian or Other Pacific Islander:											
2021.....	2,131.0	*	21.9	7.3	44.6	116.1	124.7	95.8	51.2	15.0	1.3
2020.....	2,134.5	*	22.2	7.7	44.5	120.5	125.3	91.6	51.5	14.6	*
2019.....	2,178.0	*	26.2	7.7	53.8	121.4	123.5	95.3	54.1	14.2	*
2018.....	2,106.5	*	26.5	8.2	53.7	118.5	118.9	91.9	49.2	15.4	*
2017.....	2,085.5	*	25.5	8.7	50.6	113.3	115.7	94.0	54.6	13.1	*
2016.....	2,076.5	*	28.6	11.0	55.3	109.5	115.5	96.0	49.9	14.7	*

Table 2. Birth rates, by age of mother: United States, 2010–2021, and by age and race and Hispanic origin of mother: United States, 2016–2021—Con.

[Total fertility rates are sums of birth rates for 5-year age groups multiplied by 5. Birth rates are births per 1,000 women in specified group. Populations based on counts enumerated as of April 1 for census years and estimated as of July 1 for all other years]

Race and Hispanic origin and year	Total fertility rate	Age of mother									
		10–14	15–19			20–24	25–29	30–34	35–39	40–44	45–49 ¹
			Total	15–17	18–19						
Hispanic ⁴											
2021.....	1,899.0	0.3	21.1	9.3	39.8	82.3	108.3	97.5	54.9	14.4	1.0
2020.....	1,879.5	0.3	23.0	10.3	42.5	83.8	105.8	94.4	53.4	14.2	1.0
2019.....	1,940.0	0.3	25.3	11.5	46.2	88.0	108.0	96.3	54.6	14.5	1.0
2018.....	1,959.0	0.3	26.7	12.4	48.5	89.3	108.9	96.6	54.5	14.5	1.0
2017.....	2,006.5	0.3	28.9	13.6	52.7	93.8	111.8	96.4	54.6	14.5	1.0
2016.....	2,092.5	0.4	31.9	15.6	57.3	98.4	117.4	99.2	55.8	14.5	0.9

* Estimate does not meet National Center for Health Statistics standards of reliability.

¹Birth rates computed by relating births to women aged 45 and over to women aged 45–49; see Technical Notes in this report.

²Includes births to race and origin groups not shown separately, such as Hispanic single-race White, Hispanic single-race Black, and non-Hispanic multiple-race women, and births with origin not stated.

³Race and Hispanic origin are reported separately on birth certificates; people of Hispanic origin may be of any race. In this table, non-Hispanic women are classified by race. Race categories are consistent with the 1997 Office of Management and Budget standards; see Technical Notes. Single race is defined as only one race reported on the birth certificate.

⁴Includes all people of Hispanic origin of any race; see Technical Notes.

NOTE: Rates for 2020 have been revised and may differ from those published in "Births: Final Data for 2020"; see Technical Notes.

SOURCE: National Center for Health Statistics, National Vital Statistics System, Natality.

Table 3. Births, by age of mother, live-birth order, and race and Hispanic origin of mother: United States, 2021

[Live-birth order refers to number of children born alive to mother]

Race and Hispanic origin of mother and live-birth order	All ages	Under 15	15-19						20-24	25-29	30-34	35-39	40-44	45-49	50-54
			Total	15	16	17	18	19							
All races and origins¹															
Total	3,664,292	1,877	146,973	4,471	10,298	20,773	40,169	71,262	648,484	1,023,989	1,115,055	592,179	126,332	8,362	1,041
1st child	1,392,468	1,840	124,844	4,344	9,782	18,949	34,552	57,217	356,752	394,903	348,964	136,628	25,996	2,240	301
2nd child	1,172,716	27	19,459	119	484	1,694	5,062	12,100	202,388	339,249	378,183	195,552	35,409	2,146	303
3rd child	615,617	5	2,110	1	14	82	433	1,580	66,032	178,299	213,749	128,383	25,493	1,373	173
4th child	271,216	-	210	1	1	3	30	175	16,744	71,728	98,956	66,111	16,444	914	109
5th child	108,719	-	22	-	1	-	6	15	3,608	24,243	40,294	30,792	9,100	592	68
6th child	46,810	-	5	-	-	1	2	2	719	8,162	17,394	15,041	5,110	342	37
7th child	21,343	-	2	-	-	-	1	1	173	2,614	7,726	7,736	2,872	206	14
8th child and over	23,256	-	5	-	-	-	-	5	233	1,497	6,033	9,609	5,358	492	29
Not stated	12,147	5	316	6	16	44	83	167	1,835	3,294	3,756	2,327	550	57	7
Non-Hispanic, single race²															
White	1,887,656	449	50,203	1,177	2,762	6,191	13,672	26,401	286,140	532,001	633,212	321,036	60,388	3,803	424
1st child	740,517	441	43,228	1,150	2,643	5,742	12,009	21,684	161,653	226,581	213,600	79,802	13,957	1,127	128
2nd child	632,451	5	6,210	22	112	411	1,510	4,155	88,803	177,571	226,812	113,212	18,602	1,105	131
3rd child	303,919	1	595	-	1	21	105	468	27,184	82,377	113,862	67,927	11,360	540	73
4th child	120,071	-	56	1	-	3	11	41	6,242	30,367	46,137	30,508	6,407	315	39
5th child	44,426	-	6	-	1	-	2	3	1,162	9,386	17,383	12,943	3,336	187	23
6th child	19,293	-	3	-	-	1	1	1	203	2,920	7,589	6,517	1,933	115	13
7th child	9,227	-	-	-	-	-	-	-	53	819	3,397	3,638	1,236	80	4
8th child and over	12,162	-	-	-	-	-	-	-	105	527	2,615	5,306	3,295	303	11
Not stated	5,590	2	105	4	5	13	34	49	735	1,453	1,817	1,183	262	31	2
Black	517,889	506	31,231	1,107	2,341	4,547	8,498	14,738	117,698	148,309	130,788	70,073	17,802	1,283	199
1st child	181,525	493	26,253	1,069	2,209	4,113	7,208	11,654	63,951	45,885	28,683	12,696	3,153	345	66
2nd child	147,847	11	4,291	38	123	406	1,136	2,588	34,955	47,369	38,072	18,562	4,229	293	65
3rd child	94,078	1	541	-	5	20	125	391	12,970	29,833	30,023	16,701	3,762	217	30
4th child	48,907	-	70	-	-	-	9	61	4,122	14,574	17,127	10,160	2,710	135	9
5th child	22,773	-	6	-	-	-	1	5	1,047	6,257	8,468	5,314	1,569	103	9
6th child	10,619	-	-	-	-	-	-	-	235	2,422	4,119	2,843	933	60	7
7th child	5,085	-	-	-	-	-	-	-	63	928	2,010	1,517	525	40	2
8th child and over	5,187	-	1	-	-	-	-	1	49	497	1,736	1,965	844	84	11
Not stated	1,868	1	69	-	4	8	19	38	306	544	550	315	77	6	-
American Indian or															
Alaska Native	26,124	26	2,117	88	160	353	572	944	6,939	7,537	5,987	2,925	562	25	6
1st child	8,051	26	1,753	84	153	308	487	721	3,247	1,727	870	362	65	1	-
2nd child	7,067	-	323	4	6	38	82	193	2,363	2,352	1,398	543	84	2	2
3rd child	4,737	-	26	-	-	3	2	21	934	1,767	1,318	574	110	7	1
4th child	2,827	-	2	-	-	-	-	2	279	941	1,023	487	90	5	-
5th child	1,627	-	1	-	-	-	-	1	65	446	655	371	85	2	2
6th child	822	-	-	-	-	-	-	-	11	187	341	238	43	1	1
7th child	462	-	-	-	-	-	-	-	4	53	213	153	35	4	-
8th child and over	399	-	-	-	-	-	-	-	4	20	137	188	47	3	-
Not stated	132	-	12	-	1	4	1	6	32	44	32	9	3	-	-

See footnotes at end of table.

Table 3. Births, by age of mother, live-birth order, and race and Hispanic origin of mother: United States, 2021—Con.

[Live-birth order refers to number of children born alive to mother]

Race and Hispanic origin of mother and live-birth order	All ages	Under 15	15–19						20–24	25–29	30–34	35–39	40–44	45–49	50–54
			Total	15	16	17	18	19							
Non-Hispanic, single race²—Con.															
Asian	213,813	12	971	17	57	130	232	535	10,166	42,848	88,988	57,569	12,218	907	134
1st child	94,850	12	828	16	54	118	200	440	6,517	24,602	41,526	17,627	3,375	311	52
2nd child	79,940	–	118	1	3	11	25	78	2,677	12,633	34,135	25,497	4,572	270	38
3rd child	25,702	–	19	–	–	1	6	12	711	3,732	8,945	9,573	2,540	161	21
4th child	8,250	–	2	–	–	–	–	2	177	1,217	2,719	3,029	1,011	81	14
5th child	2,643	–	–	–	–	–	–	–	39	350	861	964	382	43	4
6th child	966	–	–	–	–	–	–	–	8	105	284	388	157	22	2
7th child	363	–	–	–	–	–	–	–	1	30	112	145	68	7	–
8th child and over	363	–	–	–	–	–	–	–	1	28	111	137	74	10	2
Not stated	736	–	4	–	–	–	1	3	35	151	295	209	39	2	1
Native Hawaiian or Other Pacific Islander	9,531	5	447	4	28	59	106	250	2,337	2,810	2,383	1,218	306	22	3
1st child	2,644	5	352	4	26	50	86	186	1,046	667	385	153	32	3	1
2nd child	2,430	–	83	–	2	9	18	54	774	810	499	219	41	3	1
3rd child	1,685	–	8	–	–	–	2	6	334	598	504	190	48	3	–
4th child	1,190	–	–	–	–	–	–	–	107	396	416	217	50	3	1
5th child	669	–	–	–	–	–	–	–	27	179	259	159	42	3	–
6th child	395	–	–	–	–	–	–	–	10	84	155	110	35	1	–
7th child	209	–	1	–	–	–	–	1	2	24	88	71	22	1	–
8th child and over	187	–	–	–	–	–	–	–	–	14	49	85	34	5	–
Not stated	122	–	3	–	–	–	–	3	37	38	28	14	2	–	–
Hispanic³															
Total	885,916	770	55,263	1,851	4,447	8,496	15,252	25,217	199,773	256,844	220,530	120,329	30,464	1,803	140
1st child	315,479	754	46,722	1,797	4,223	7,705	12,997	20,000	106,467	83,074	52,933	20,783	4,367	343	36
2nd child	266,357	11	7,542	51	213	743	2,050	4,485	65,058	87,926	67,125	31,637	6,648	369	41
3rd child	166,123	3	828	1	7	34	174	612	21,238	53,943	53,184	29,776	6,800	333	18
4th child	80,781	–	73	–	1	–	8	64	5,134	21,554	28,350	19,763	5,596	292	19
5th child	32,710	–	8	–	–	–	3	5	1,103	6,671	11,273	10,051	3,383	209	12
6th child	12,940	–	2	–	–	–	1	1	220	2,085	4,272	4,420	1,815	118	8
7th child	5,219	–	1	–	–	–	1	–	47	647	1,614	1,964	877	67	2
8th child and over	4,172	–	4	–	–	–	–	4	63	357	1,193	1,600	888	66	1
Not stated	2,135	2	83	2	3	14	18	46	443	587	586	335	90	6	3

– Quantity zero.

¹Includes births to race and origin groups not shown separately, such as Hispanic single-race White, Hispanic single-race Black, and non-Hispanic multiple-race women, and births with origin not stated.

²Race and Hispanic origin are reported separately on birth certificates; people of Hispanic origin may be of any race. In this table, non-Hispanic women are classified by race. Race categories are consistent with the 1997 Office of Management and Budget standards; see Technical Notes in this report. Single race is defined as only one race reported on the birth certificate.

³Includes all people of Hispanic origin of any race; see Technical Notes.

SOURCE: National Center for Health Statistics, National Vital Statistics System, Natality.

Table 4. Births, by age of mother, live-birth order, and Hispanic origin of mother: United States, 2021

[Live-birth order refers to number of children born alive to mother. Includes births with stated origin of mother only]

Origin of mother and live-birth order	All ages	Under 15	15–19						20–24	25–29	30–34	35–39	40–44	45–49	50–54
			Total	15	16	17	18	19							
Hispanic															
Total	885,916	770	55,263	1,851	4,447	8,496	15,252	25,217	199,773	256,844	220,530	120,329	30,464	1,803	140
1st child	315,479	754	46,722	1,797	4,223	7,705	12,997	20,000	106,467	83,074	52,933	20,783	4,367	343	36
2nd child	266,357	11	7,542	51	213	743	2,050	4,485	65,058	87,926	67,125	31,637	6,648	369	41
3rd child	166,123	3	828	1	7	34	174	612	21,238	53,943	53,184	29,776	6,800	333	18
4th child	80,781	–	73	–	1	–	8	64	5,134	21,554	28,350	19,763	5,596	292	19
5th child	32,710	–	8	–	–	–	3	5	1,103	6,671	11,273	10,051	3,383	209	12
6th child	12,940	–	2	–	–	–	1	1	220	2,085	4,272	4,420	1,815	118	8
7th child	5,219	–	1	–	–	–	1	–	47	647	1,614	1,964	877	67	2
8th child and over	4,172	–	4	–	–	–	–	4	63	357	1,193	1,600	888	66	1
Not stated	2,135	2	83	2	3	14	18	46	443	587	586	335	90	6	3
Mexican	485,127	373	31,391	981	2,460	4,838	8,597	14,515	115,837	145,546	114,584	61,159	15,325	878	34
1st child	167,562	368	26,432	953	2,334	4,391	7,321	11,433	61,486	44,751	23,928	8,709	1,751	128	9
2nd child	139,214	3	4,366	26	123	417	1,161	2,639	37,646	48,742	32,005	13,664	2,645	134	9
3rd child	93,874	1	501	1	2	25	100	373	12,601	32,207	29,605	15,491	3,310	156	2
4th child	49,090	–	49	–	1	–	5	43	3,073	13,382	17,336	11,812	3,265	167	6
5th child	20,530	–	–	–	–	–	–	–	661	4,249	7,053	6,340	2,092	131	4
6th child	8,146	–	1	–	–	–	–	1	139	1,336	2,637	2,800	1,157	74	2
7th child	3,284	–	1	–	–	–	1	–	24	424	1,036	1,232	524	43	–
8th child and over	2,611	–	4	–	–	–	–	4	43	219	763	991	549	42	–
Not stated	816	1	37	1	–	5	9	22	164	236	221	120	32	3	2
Puerto Rican	70,729	44	4,218	106	272	582	1,184	2,074	17,871	21,081	17,285	8,168	1,935	114	13
1st child	27,267	44	3,636	104	253	534	1,043	1,702	9,712	7,133	4,592	1,753	364	30	3
2nd child	21,703	–	499	2	14	45	127	311	5,582	7,055	5,561	2,431	544	30	1
3rd child	11,940	–	66	–	3	–	8	55	1,832	4,071	3,732	1,825	393	17	4
4th child	5,440	–	2	–	–	–	–	2	473	1,770	1,857	1,062	259	13	4
5th child	2,180	–	1	–	–	–	1	–	108	563	814	541	145	7	1
6th child	939	–	–	–	–	–	–	–	16	214	338	264	99	8	–
7th child	382	–	–	–	–	–	–	–	12	77	129	107	53	4	–
8th child and over	357	–	–	–	–	–	–	–	5	39	124	125	59	5	–
Not stated	521	–	14	–	2	3	5	4	131	159	138	60	19	–	–
Cuban	24,437	6	565	10	23	66	183	283	3,653	6,623	8,495	4,290	736	60	9
1st child	11,323	6	513	10	22	66	165	250	2,446	3,379	3,422	1,300	233	22	2
2nd child	8,756	–	45	–	1	–	18	26	927	2,293	3,416	1,792	262	18	3
3rd child	3,041	–	5	–	–	–	–	5	223	695	1,137	820	148	13	–
4th child	793	–	1	–	–	–	–	1	38	158	314	233	44	4	1
5th child	271	–	–	–	–	–	–	–	7	45	124	68	24	2	1
6th child	99	–	–	–	–	–	–	–	1	22	35	32	8	–	1
7th child	48	–	–	–	–	–	–	–	–	8	18	12	9	–	1
8th child and over	45	–	–	–	–	–	–	–	–	8	11	18	8	–	–
Not stated	61	–	1	–	–	–	–	1	11	15	18	15	–	1	–

See footnotes at end of table.

Table 4. Births, by age of mother, live-birth order, and Hispanic origin of mother: United States, 2021—Con.

[Live-birth order refers to number of children born alive to mother. Includes births with stated origin of mother only]

Origin of mother and live-birth order	All ages	Under 15	15–19						20–24	25–29	30–34	35–39	40–44	45–49	50–54
			Total	15	16	17	18	19							
Hispanic—Con.															
Dominican	33,373	9	1,351	29	76	178	371	697	6,378	9,855	9,479	4,925	1,288	75	13
1st child	12,943	9	1,201	29	74	166	329	603	4,050	3,984	2,614	881	187	16	1
2nd child	11,444	—	135	—	2	10	37	86	1,811	3,666	3,626	1,771	413	16	6
3rd child	6,065	—	10	—	—	1	2	7	409	1,616	2,217	1,397	395	19	2
4th child	1,978	—	—	—	—	—	—	—	70	423	725	561	186	13	—
5th child	541	—	1	—	—	—	1	—	11	106	178	184	52	7	2
6th child	179	—	—	—	—	—	—	—	4	24	53	66	28	3	1
7th child	57	—	—	—	—	—	—	—	—	5	19	24	9	—	—
8th child and over	58	—	—	—	—	—	—	—	1	7	18	15	16	1	—
Not stated	108	—	4	—	—	1	2	1	22	24	29	26	2	—	1
Central and South American	178,067	239	11,264	491	1,022	1,813	3,182	4,756	33,801	46,490	47,794	29,736	8,210	488	45
1st child	61,560	231	9,512	474	966	1,635	2,680	3,757	17,207	14,911	12,552	5,723	1,302	104	18
2nd child	56,765	5	1,579	16	54	169	459	881	11,755	17,104	15,536	8,609	2,035	127	15
3rd child	34,436	2	138	—	2	6	38	92	3,760	9,677	11,342	7,508	1,913	91	5
4th child	15,353	—	11	—	—	—	2	9	798	3,448	5,296	4,329	1,397	70	4
5th child	5,849	—	5	—	—	—	1	4	166	908	1,942	2,000	779	49	—
6th child	2,235	—	1	—	—	—	1	—	25	248	687	858	393	21	2
7th child	858	—	—	—	—	—	—	—	6	61	200	378	200	13	—
8th child and over	614	—	—	—	—	—	—	—	9	43	130	253	167	11	1
Not stated	397	1	18	1	—	3	1	13	75	90	109	78	24	2	—
Other and unknown Hispanic	94,183	99	6,474	234	594	1,019	1,735	2,892	22,233	27,249	22,893	12,051	2,970	188	26
1st child	34,824	96	5,428	227	574	913	1,459	2,255	11,566	8,916	5,825	2,417	530	43	3
2nd child	28,475	3	918	7	19	102	248	542	7,337	9,066	6,981	3,370	749	44	7
3rd child	16,767	—	108	—	—	2	26	80	2,413	5,677	5,151	2,735	641	37	5
4th child	8,127	—	10	—	—	—	1	9	682	2,373	2,822	1,766	445	25	4
5th child	3,339	—	1	—	—	—	—	1	150	800	1,162	918	291	13	4
6th child	1,342	—	—	—	—	—	—	—	35	241	522	400	130	12	2
7th child	590	—	—	—	—	—	—	—	5	72	212	211	82	7	1
8th child and over	487	—	—	—	—	—	—	—	5	41	147	198	89	7	—
Not stated	232	—	9	—	1	2	1	5	40	63	71	36	13	—	—

— Quantity zero.

NOTES: In this table, Hispanic women are classified only by place of origin; non-Hispanic women are not shown. Other and unknown Hispanic includes origins not otherwise classified, including Spaniards. See Technical Notes in this report.

SOURCE: National Center for Health Statistics, National Vital Statistics System, Natality.

Table 5. Birth rates, by age of mother, live-birth order, and race and Hispanic origin of mother: United States, 2021

[Rates are births per 1,000 women in specified age and race and Hispanic-origin group. Fertility rate computed by relating total births, regardless of age of mother, to women aged 15–44. Populations estimated as of July 1. Live-birth order refers to number of children born alive to mother. Figures for live-birth order not stated are distributed]

Race and Hispanic origin of mother and live-birth order	Fertility rate	Age of mother									
		10–14	15–19			20–24	25–29	30–34	35–39	40–44	45–49 ¹
			Total	15–17	18–19						
All races and origins²											
Total	56.3	0.2	13.9	5.6	26.6	61.5	93.0	97.6	53.7	12.0	0.9
1st child	21.5	0.2	11.9	5.2	22.0	33.9	36.0	30.6	12.4	2.5	0.3
2nd child	18.1	0.0	1.8	0.4	4.1	19.2	30.9	33.2	17.8	3.4	0.2
3rd child	9.5	*	0.2	0.0	0.5	6.3	16.2	18.8	11.7	2.4	0.2
4th child	4.2	*	0.0	*	0.0	1.6	6.5	8.7	6.0	1.6	0.1
5th child	1.7	*	0.0	*	0.0	0.3	2.2	3.5	2.8	0.9	0.1
6th and 7th child	1.1	*	*	*	*	0.1	1.0	2.2	2.1	0.8	0.1
8th child and over	0.4	*	*	*	*	0.0	0.1	0.5	0.9	0.5	0.1
Non-Hispanic, single race³											
White	54.4	0.1	9.4	3.2	18.7	52.0	91.8	102.3	52.8	10.5	0.8
1st child	21.4	0.1	8.1	3.0	15.7	29.5	39.2	34.6	13.2	2.4	0.2
2nd child	18.2	*	1.2	0.2	2.6	16.2	30.7	36.7	18.7	3.2	0.2
3rd child	8.8	*	0.1	0.0	0.3	5.0	14.3	18.4	11.2	2.0	0.1
4th child	3.5	*	0.0	*	0.0	1.1	5.3	7.5	5.0	1.1	0.1
5th child	1.3	*	*	*	*	0.2	1.6	2.8	2.1	0.6	0.0
6th and 7th child	0.8	*	*	*	*	0.0	0.7	1.8	1.7	0.6	0.0
8th child and over	0.4	*	*	*	*	0.0	0.1	0.4	0.9	0.6	0.1
Black	57.4	0.3	21.8	9.3	40.6	79.1	91.9	79.7	48.2	12.8	1.2
1st child	20.2	0.3	18.3	8.6	33.0	43.1	28.6	17.7	8.8	2.3	0.3
2nd child	16.4	*	3.0	0.7	6.5	23.5	29.4	23.3	12.8	3.1	0.3
3rd child	10.5	*	0.4	0.0	0.9	8.7	18.5	18.3	11.5	2.7	0.2
4th child	5.4	*	0.0	*	0.1	2.8	9.0	10.5	7.0	2.0	0.1
5th child	2.5	*	*	*	*	0.7	3.9	5.2	3.7	1.1	0.1
6th and 7th child	1.7	*	*	*	*	0.2	2.1	3.7	3.0	1.1	0.1
8th child and over	0.6	*	*	*	*	0.0	0.3	1.1	1.4	0.6	0.1
American Indian or Alaska Native	50.8	0.3	24.2	11.3	44.1	78.7	81.9	66.1	36.2	7.5	0.5
1st child	15.8	0.3	20.1	10.4	35.3	37.1	18.9	9.9	4.6	0.9	*
2nd child	13.8	*	3.7	0.9	8.1	26.9	25.8	15.5	6.8	1.2	*
3rd child	9.2	*	0.3	*	0.7	10.6	19.2	14.5	7.1	1.5	*
4th child	5.5	*	*	*	*	3.2	10.2	11.3	6.1	1.2	*
5th child	3.2	*	*	*	*	0.7	4.9	7.2	4.6	1.1	*
6th and 7th child	2.5	*	*	*	*	*	2.6	6.1	4.8	1.0	*
8th child and over	0.8	*	*	*	*	*	0.2	1.6	2.3	0.6	*
Asian	49.6	*	2.0	0.7	3.8	17.7	60.4	105.0	67.9	15.8	1.5
1st child	22.0	*	1.7	0.6	3.2	11.4	34.6	49.0	20.9	4.4	0.5
2nd child	18.5	*	0.2	*	0.5	4.7	17.9	40.2	30.0	5.8	0.4
3rd child	6.0	*	*	*	*	1.3	5.4	10.8	11.3	3.3	0.3
4th child	2.0	*	*	*	*	0.3	1.8	3.3	3.6	1.3	0.2
5th child	0.6	*	*	*	*	0.1	0.5	1.1	1.2	0.5	0.1
6th and 7th child	0.3	*	*	*	*	*	0.2	0.5	0.7	0.3	0.1
8th child and over	0.1	*	*	*	*	*	0.0	0.1	0.2	0.1	*
Native Hawaiian or Other Pacific Islander	71.5	*	21.9	7.3	44.6	116.1	124.7	95.8	51.2	15.0	1.3
1st child	20.4	*	17.6	6.4	34.7	53.2	30.3	16.4	6.8	1.7	*
2nd child	18.4	*	4.0	*	8.8	38.9	36.2	20.5	9.7	1.9	*
3rd child	12.8	*	*	*	*	16.7	26.9	20.1	8.3	2.4	*
4th child	9.0	*	*	*	*	5.3	17.9	16.7	8.9	2.5	*
5th child	5.1	*	*	*	*	1.3	8.1	10.5	6.5	2.0	*
6th and 7th child	4.5	*	*	*	*	*	4.7	9.6	7.5	2.8	*
8th child and over	1.4	*	*	*	*	*	*	1.9	3.4	1.5	*

Table 5. Birth rates, by age of mother, live-birth order, and race and Hispanic origin of mother: United States, 2021—Con.

[Rates are births per 1,000 women in specified age and race and Hispanic-origin group. Fertility rate computed by relating total births, regardless of age of mother, to women aged 15–44. Populations estimated as of July 1. Live-birth order refers to number of children born alive to mother. Figures for live-birth order not stated are distributed]

Race and Hispanic origin of mother and live-birth order	Fertility rate	Age of mother									
		10–14	15–19			20–24	25–29	30–34	35–39	40–44	45–49 ¹
			Total	15–17	18–19						
Hispanic ⁴											
Total	63.4	0.3	21.1	9.3	39.8	82.3	108.3	97.5	54.9	14.4	1.0
1st child	22.6	0.3	17.9	8.6	32.5	43.9	35.1	23.5	9.5	2.1	0.2
2nd child	19.1	*	2.9	0.6	6.4	26.9	37.1	29.8	14.5	3.2	0.2
3rd child	11.9	*	0.3	0.0	0.8	8.8	22.8	23.6	13.6	3.2	0.2
4th child	5.8	*	0.0	*	0.1	2.1	9.1	12.6	9.0	2.7	0.2
5th child	2.3	*	*	*	*	0.5	2.8	5.0	4.6	1.6	0.1
6th and 7th child	1.3	*	*	*	*	0.1	1.2	2.6	2.9	1.3	0.1
8th child and over	0.3	*	*	*	*	0.0	0.2	0.5	0.7	0.4	0.0

0.0 Quantity more than zero but less than 0.05.

* Estimate does not meet National Center for Health Statistics standards of reliability.

¹Birth rates computed by relating births to women aged 45 and over to women aged 45–49; see Technical Notes in this report.

²Includes births to race and origin groups not shown separately, such as Hispanic single-race White, Hispanic single-race Black, and non-Hispanic multiple-race women, and births with origin not stated.

³Race and Hispanic origin are reported separately on birth certificates; people of Hispanic origin may be of any race. In this table, non-Hispanic women are classified by race. Race categories are consistent with the 1997 Office of Management and Budget standards; see Technical Notes. Single race is defined as only one race reported on the birth certificate.

⁴Includes all people of Hispanic origin of any race; see Technical Notes.

SOURCE: National Center for Health Statistics, National Vital Statistics System, Natality.

Table 6. Births, by race and Hispanic origin of mother: United States, each state and territory, 2021

[By place of residence]

Area	All races and origins ²	Non-Hispanic, single race ¹						Hispanic ³
		White	Black	American Indian or Alaska Native	Asian	Native Hawaiian or Other Pacific Islander		
United States ⁴	3,664,292	1,887,656	517,889	26,124	213,813	9,531	885,916	
Alabama	58,054	33,775	16,511	155	852	51	5,648	
Alaska	9,367	4,695	243	1,730	505	295	798	
Arizona	77,916	31,488	4,403	3,362	2,592	231	33,475	
Arkansas	35,965	22,862	6,661	217	815	522	4,069	
California	420,608	115,845	21,287	1,316	55,777	1,619	196,077	
Colorado	62,949	36,334	2,988	323	2,490	202	18,362	
Connecticut	35,670	19,136	4,357	33	1,921	10	9,482	
Delaware	10,482	5,042	2,711	12	538	1	1,826	
District of Columbia	8,660	2,959	3,591	14	402	4	1,341	
Florida	216,260	91,223	45,710	227	6,506	151	69,375	
Georgia	124,073	53,675	41,887	123	5,432	118	19,480	
Hawaii	15,620	3,018	342	23	3,851	1,371	2,661	
Idaho	22,427	17,039	271	232	380	60	3,887	
Illinois	132,189	71,482	20,779	86	8,338	32	28,546	
Indiana	79,946	56,839	9,991	76	2,295	53	8,826	
Iowa	36,835	28,167	2,567	129	1,055	291	3,903	
Kansas	34,705	24,056	2,316	183	1,031	69	6,122	
Kentucky	52,214	41,061	5,124	43	1,058	82	3,737	
Louisiana	57,437	29,100	20,958	262	1,011	32	5,267	
Maine	12,006	10,619	551	71	197	6	305	
Maryland	68,285	28,193	20,449	83	4,431	31	13,164	
Massachusetts	69,137	39,817	6,674	63	5,471	12	14,551	
Michigan	104,980	72,108	18,288	429	4,050	37	7,075	
Minnesota	64,425	43,535	7,721	792	4,849	69	5,487	
Mississippi	35,156	17,818	14,619	227	404	17	1,756	
Missouri	69,453	50,705	9,443	184	1,625	246	4,606	
Montana	11,231	9,101	71	939	105	12	648	
Nebraska	24,609	16,767	1,533	248	861	40	4,440	
Nevada	33,686	11,800	4,457	239	2,372	331	12,842	
New Hampshire	12,625	10,848	274	8	432	4	860	
New Jersey	101,497	47,318	12,822	45	10,281	30	28,143	
New Mexico	21,391	5,754	372	2,152	351	19	12,354	
New York	210,742	106,679	28,946	330	20,463	61	48,984	
North Carolina	120,466	63,239	27,028	1,407	4,684	126	20,613	
North Dakota	10,112	7,407	595	685	199	31	671	
Ohio	129,791	92,761	20,748	107	3,862	118	8,228	
Oklahoma	48,410	26,522	3,826	4,566	1,203	245	8,135	
Oregon	40,914	26,662	1,065	378	2,106	337	8,334	
Pennsylvania	132,622	88,168	16,748	88	5,980	44	17,163	
Rhode Island	10,464	5,871	839	35	463	2	2,931	
South Carolina	57,185	31,841	16,009	122	1,167	64	6,386	
South Dakota	11,369	8,111	385	1,525	202	9	695	
Tennessee	81,717	53,340	15,204	65	1,760	81	9,451	
Texas	373,594	123,452	46,371	610	19,424	571	177,386	
Utah	46,712	33,789	594	360	1,187	475	8,358	
Vermont	5,384	4,863	137	13	122	1	147	
Virginia	95,825	52,069	19,170	134	6,956	103	15,044	
Washington	83,911	46,187	3,698	928	8,817	1,181	16,260	
West Virginia	17,198	15,643	543	20	181	4	345	
Wisconsin	61,781	43,991	5,964	546	2,692	24	6,923	
Wyoming	6,237	4,882	48	179	67	6	749	

See footnotes at end of table.

Table 6. Births, by race and Hispanic origin of mother: United States, each state and territory, 2021—Con.

[By place of residence]

Area	All races and origins ²	Non-Hispanic, single race ¹					Hispanic ³
		White	Black	American Indian or Alaska Native	Asian	Native Hawaiian or Other Pacific Islander	
Puerto Rico	19,304	377	47	2	30	1	18,833
U.S. Virgin Islands	903	76	504	2	6	—	206
Guam	2,623	165	20	5	602	1,702	23
American Samoa	---	---	---	---	---	---	---
Northern Marianas	570	9	—	—	218	314	—

— Quantity zero.

--- Data not available.

¹Race and Hispanic origin are reported separately on birth certificates; people of Hispanic origin may be of any race. In this table, non-Hispanic women are classified by race. Race categories are consistent with the 1997 Office of Management and Budget standards; see Technical Notes in this report. Single race is defined as only one race reported on the birth certificate.

²Includes births to race and origin groups not shown separately, such as Hispanic single-race White, Hispanic single-race Black, and non-Hispanic multiple-race women, and births with origin not stated.

³Includes all people of Hispanic origin of any race; see Technical Notes.

⁴Excludes data for the territories.

SOURCE: National Center for Health Statistics, National Vital Statistics System, Natality.

Table 7. Births, by Hispanic origin of mother: United States, each state and territory, 2021

[By place of residence]

Area	Total	Mexican	Puerto Rican	Cuban	Dominican	Central and South American	Other and unknown Hispanic
United States ¹	885,916	485,127	70,729	24,437	33,373	178,067	94,183
Alabama	5,648	2,837	272	74	38	2,346	81
Alaska	798	415	108	19	38	105	113
Arizona	33,475	28,761	604	242	76	1,511	2,281
Arkansas	4,069	2,692	145	31	13	821	367
California	196,077	141,892	2,051	771	214	29,953	21,196
Colorado	18,362	12,377	551	204	64	1,893	3,273
Connecticut	9,482	785	4,311	149	1,028	2,717	492
Delaware	1,826	602	415	32	69	569	139
District of Columbia	1,341	147	50	32	56	873	183
Florida	69,375	11,158	13,369	15,115	3,422	23,742	2,569
Georgia	19,480	10,990	1,445	422	383	5,304	936
Hawaii	2,661	758	927	28	28	169	751
Idaho	3,887	2,830	78	20	11	260	688
Illinois	28,546	22,564	2,072	213	155	2,822	720
Indiana	8,826	5,281	561	80	89	1,874	941
Iowa	3,903	2,702	145	55	17	793	191
Kansas	6,122	4,502	187	50	12	956	415
Kentucky	3,737	1,556	275	416	29	1,109	352
Louisiana	5,267	1,156	215	130	123	2,921	722
Maine	305	91	83	11	12	87	21
Maryland	13,164	1,487	784	155	410	9,238	1,090
Massachusetts	14,551	573	4,403	151	3,084	4,175	2,165
Michigan	7,075	5,081	475	142	59	769	549
Minnesota	5,487	3,486	255	48	56	1,324	318
Mississippi	1,756	756	115	28	19	612	226
Missouri	4,606	2,594	276	89	23	1,069	555
Montana	648	427	33	6	4	58	120
Nebraska	4,440	2,836	87	113	14	1,180	210
Nevada	12,842	9,354	461	454	50	1,556	967
New Hampshire	860	94	206	17	169	191	183
New Jersey	28,143	3,831	5,851	707	5,494	10,818	1,442
New Mexico	12,354	6,152	103	63	5	194	5,837
New York	48,984	5,938	9,892	674	11,825	16,795	3,860
North Carolina	20,613	9,608	1,940	400	638	6,880	1,147
North Dakota	671	471	71	11	4	52	62
Ohio	8,228	3,172	1,984	117	262	2,180	513
Oklahoma	8,135	5,813	285	52	21	1,182	782
Oregon	8,334	6,838	194	86	23	886	307
Pennsylvania	17,163	2,145	7,399	314	3,266	2,787	1,252
Rhode Island	2,931	158	663	25	1,004	953	128
South Carolina	6,386	2,710	693	133	130	2,249	471
South Dakota	695	368	48	12	8	194	65
Tennessee	9,451	4,055	511	164	86	4,040	595
Texas	177,386	127,301	2,842	1,855	466	18,649	26,273
Utah	8,358	5,457	165	40	55	1,647	994
Vermont	147	42	34	7	9	32	23
Virginia	15,044	3,151	1,365	237	201	4,837	5,253
Washington	16,260	12,017	521	161	50	1,765	1,746
West Virginia	345	136	62	11	10	88	38
Wisconsin	6,923	4,494	1,123	69	49	784	404
Wyoming	749	486	24	2	2	58	177

Table 7. Births, by Hispanic origin of mother: United States, each state and territory, 2021—Con.

[By place of residence]

Area	Total	Mexican	Puerto Rican	Cuban	Dominican	Central and South American	Other and unknown Hispanic
Puerto Rico	18,833	35	18,276	18	388	110	6
U.S. Virgin Islands	206	—	23	—	79	4	100
Guam	23	9	9	—	—	4	1
American Samoa	---	---	---	---	---	---	---
Northern Marianas	—	—	—	—	—	—	—

— Quantity zero.

--- Data not available.

!Excludes data for the territories.

NOTES: In this table, Hispanic women are classified only by place of origin; non-Hispanic women are not shown. Other and unknown Hispanic includes origins not otherwise classified, including Spaniards. See Technical Notes in this report.

SOURCE: National Center for Health Statistics, National Vital Statistics System, Natality.

Table 8. Birth rates, by age of mother: United States, each state and territory, 2021

[By place of residence. Fertility rates are births per 1,000 women aged 15–44; total fertility rates are sums of birth rates for 5-year age groups multiplied by 5; birth rates by age are births per 1,000 women in specified age group estimated in each area. Populations estimated as of July 1]

Area	Birth rate	Fertility rate	Total fertility rate	Age of mother									
				10–14	15–19			20–24	25–29	30–34	35–39	40–44	45–49 ¹
					Total	15–17	18–19						
United States ²	11.0	56.3	1,664.0	0.2	13.9	5.6	26.6	61.5	93.0	97.6	53.7	12.0	0.9
Alabama	11.5	59.5	1,765.0	0.4	22.9	9.7	42.9	87.2	111.5	85.2	38.1	7.3	0.4
Alaska	12.8	64.9	1,886.0	*	17.5	6.8	37.4	90.3	108.0	94.2	53.1	13.3	*
Arizona	10.7	55.5	1,636.0	0.2	15.1	6.2	28.4	65.8	97.5	90.6	46.8	10.5	0.7
Arkansas	11.9	61.7	1,836.0	0.3	26.5	10.2	52.5	99.5	112.7	83.9	36.6	7.5	0.2
California	10.7	52.8	1,536.5	0.1	9.9	3.9	19.2	47.4	76.3	93.1	62.9	16.0	1.6
Colorado	10.8	52.5	1,517.5	0.2	11.4	4.8	21.4	53.5	77.3	92.7	55.2	12.2	1.0
Connecticut	9.9	52.1	1,576.0	*	7.1	2.9	12.9	33.3	75.0	117.5	67.7	13.3	1.2
Delaware	10.4	56.5	1,678.0	*	13.5	4.5	26.2	64.6	95.0	95.7	54.5	11.6	*
District of Columbia	12.9	48.7	1,340.0	*	13.9	8.0	18.1	42.3	42.5	70.5	72.1	24.2	2.2
Florida	9.9	54.9	1,621.5	0.2	13.5	5.2	26.7	60.1	91.0	93.3	53.0	12.3	0.9
Georgia	11.5	55.9	1,667.5	0.2	16.6	6.9	31.5	70.6	96.2	90.5	47.6	11.0	0.8
Hawaii	10.8	59.2	1,726.5	*	12.3	3.8	26.2	65.3	90.6	97.4	61.9	16.5	1.2
Idaho	11.8	60.7	1,846.5	*	12.0	4.3	25.0	83.3	123.0	96.2	44.0	10.0	0.7
Illinois	10.4	53.0	1,574.5	0.1	11.1	4.4	21.6	50.1	82.7	101.6	56.6	11.8	0.9
Indiana	11.7	60.2	1,793.5	0.2	17.0	6.8	32.5	76.1	114.7	98.0	43.5	8.6	0.6
Iowa	11.5	60.8	1,851.5	*	12.7	4.7	24.2	59.6	124.3	116.8	47.2	9.0	0.5
Kansas	11.8	61.0	1,840.0	*	16.3	5.8	32.2	68.9	116.6	108.7	48.2	8.7	0.5
Kentucky	11.6	60.8	1,812.5	0.3	22.3	7.9	44.6	88.8	112.9	89.5	40.4	7.8	0.5
Louisiana	12.4	62.7	1,866.5	0.5	24.5	10.6	47.4	93.7	113.4	89.1	42.8	8.8	0.5
Maine	8.7	49.9	1,476.0	*	7.8	3.2	14.5	52.3	86.4	91.3	47.5	9.2	0.6
Maryland	11.1	56.4	1,664.5	0.2	11.3	4.5	21.5	49.8	85.5	106.8	62.6	15.3	1.4
Massachusetts	9.9	49.0	1,434.0	*	5.7	2.6	9.4	27.3	60.0	107.8	69.4	15.4	1.1
Michigan	10.4	55.4	1,636.5	0.2	12.2	4.7	23.6	54.9	98.5	103.0	48.4	9.4	0.7
Minnesota	11.3	58.6	1,749.0	0.1	8.5	3.7	16.2	44.9	100.6	124.0	59.3	11.5	0.9
Mississippi	11.9	60.7	1,818.0	0.5	25.6	11.0	48.6	98.3	116.7	81.4	33.6	7.2	0.3
Missouri	11.3	58.4	1,731.0	0.2	17.1	6.6	33.6	72.7	107.6	95.8	43.6	8.7	0.5
Montana	10.2	54.8	1,620.0	*	13.6	5.2	26.8	59.0	99.8	97.3	44.6	8.9	*
Nebraska	12.5	64.4	1,954.0	*	14.0	6.1	25.6	63.5	125.7	124.4	52.3	10.3	0.5
Nevada	10.7	54.8	1,606.0	*	15.1	5.0	33.5	70.4	93.3	83.1	46.9	11.4	0.9
New Hampshire	9.1	49.9	1,476.0	*	5.4	2.1	9.7	33.2	83.8	108.7	52.3	10.9	0.8
New Jersey	11.0	58.0	1,723.5	0.1	7.9	2.9	16.3	42.5	79.7	122.6	73.6	17.0	1.3
New Mexico	10.1	52.9	1,575.5	*	19.0	8.1	36.0	74.1	94.8	76.7	40.9	8.8	0.6
New York	10.6	54.1	1,563.5	0.1	9.1	3.5	16.9	46.7	72.8	98.4	66.4	17.5	1.7
North Carolina	11.4	58.1	1,725.0	0.2	16.0	6.5	29.5	69.7	98.7	98.1	51.0	10.6	0.7
North Dakota	13.0	66.7	1,939.0	*	12.9	4.9	24.3	58.8	130.8	123.5	50.8	10.1	*
Ohio	11.0	57.9	1,715.0	0.3	15.5	6.1	29.8	70.8	103.1	97.6	46.4	8.7	0.6
Oklahoma	12.1	61.5	1,828.5	0.3	24.1	8.8	48.2	91.9	115.2	87.2	38.9	7.7	0.4
Oregon	9.6	48.9	1,431.0	*	9.5	3.3	19.1	51.6	79.1	84.6	49.1	11.4	0.8
Pennsylvania	10.2	54.7	1,612.0	0.1	11.5	4.9	20.7	52.9	90.4	101.9	54.1	10.8	0.7
Rhode Island	9.6	48.3	1,421.0	*	7.8	3.6	12.2	38.1	74.0	95.5	54.9	12.7	1.0

See footnotes at end of table.

Table 8. Birth rates, by age of mother: United States, each state and territory, 2021—Con.

[By place of residence. Fertility rates are births per 1,000 women aged 15–44; total fertility rates are sums of birth rates for 5-year age groups multiplied by 5; birth rates by age are births per 1,000 women in specified age group estimated in each area. Populations estimated as of July 1]

Area	Birth rate	Fertility rate	Total fertility rate	Age of mother									
				10–14	15–19			20–24	25–29	30–34	35–39	40–44	45–49 ¹
					Total	15–17	18–19						
South Carolina	11.0	57.5	1,707.5	0.3	18.3	7.7	34.0	73.8	102.5	90.4	45.9	9.7	0.6
South Dakota	12.7	68.6	2,067.0	*	17.0	8.5	30.1	74.0	138.6	122.3	51.6	8.8	0.9
Tennessee	11.7	59.8	1,751.5	0.3	21.5	8.0	43.4	82.7	101.9	90.0	44.3	9.1	0.5
Texas	12.7	60.7	1,809.0	0.2	20.3	8.7	38.9	78.3	105.2	96.1	49.7	11.2	0.8
Utah	14.0	63.6	1,918.5	*	9.7	3.5	19.7	67.0	133.6	110.7	51.1	10.7	0.9
Vermont	8.3	44.9	1,370.5	*	6.4	3.1	9.9	31.4	73.5	98.4	53.0	10.2	1.2
Virginia	11.1	56.1	1,660.0	0.1	11.7	4.6	21.9	54.2	90.0	103.6	58.1	13.2	1.1
Washington	10.8	54.2	1,558.5	0.1	10.1	3.7	20.5	54.8	83.9	93.3	55.9	12.6	1.0
West Virginia	9.6	54.7	1,650.5	*	20.9	7.3	41.7	89.3	103.8	76.2	32.8	6.4	0.5
Wisconsin	10.5	55.7	1,688.5	0.1	10.1	3.8	19.2	49.5	103.3	115.6	48.8	9.7	0.6
Wyoming	10.8	57.5	1,746.0	*	16.0	5.3	34.1	80.1	114.7	89.7	39.5	8.7	*
Puerto Rico	5.9	30.8	907.0	*	13.2	5.3	24.7	54.5	51.8	36.6	20.7	4.2	0.3
U.S. Virgin Islands	8.5	48.4	1,457.5	*	18.5	*	35.5	76.7	77.3	63.4	40.9	14.1	*
Guam	15.5	80.1	2,355.0	*	23.8	11.7	42.7	96.7	130.3	122.4	75.2	20.6	*
American Samoa	---	---	---	---	---	---	---	---	---	---	---	---	---
Northern Marianas	11.0	62.8	2,204.5	*	14.0	*	*	55.3	108.5	162.6	82.6	16.4	*

* Estimate does not meet National Center for Health Statistics standards of reliability.

--- Data not available.

¹Birth rates computed by relating births to women aged 45 and over to women aged 45–49; see Technical Notes in this report.

²Excludes data for the territories.

NOTES: Population data for computing birth rates were provided by the U.S. Census Bureau. Rates by state may differ from rates computed on the basis of other population estimates.

SOURCE: National Center for Health Statistics, National Vital Statistics System, Natality.

Table 9. Births to unmarried women, by age and race and Hispanic origin of mother: United States, 2021

Age of mother	Non-Hispanic, single race ¹						
	All races and origins ²	White	Black	American Indian or Alaska Native	Asian	Native Hawaiian or Other Pacific Islander	Hispanic ³
				Number			
All ages	1,464,455	519,822	362,840	17,890	26,993	4,936	471,730
Under 15	1,871	449	504	26	10	5	767
15–19	135,040	44,138	30,719	2,028	714	402	50,628
15–17	34,900	9,851	7,976	597	174	88	14,500
18–19	100,140	34,287	22,743	1,431	540	314	36,128
20–24	441,780	161,215	106,008	5,584	4,039	1,636	144,130
25–29	419,627	147,263	109,481	4,907	7,383	1,443	132,072
30–34	287,957	102,207	75,140	3,463	7,969	926	87,461
35–39	140,539	51,231	32,808	1,587	5,188	422	44,141
40 and over	37,641	13,319	8,180	295	1,690	102	12,531
				Percent			
All ages	40.0	27.5	70.1	68.5	12.6	51.8	53.2
Under 15	99.7	100.0	99.6	100.0	*	*	99.6
15–19	91.9	87.9	98.4	95.8	73.5	89.9	91.6
15–17	98.2	97.2	99.8	99.3	85.3	96.7	98.0
18–19	89.9	85.6	97.9	94.4	70.4	88.2	89.3
20–24	68.1	56.3	90.1	80.5	39.7	70.0	72.1
25–29	41.0	27.7	73.8	65.1	17.2	51.4	51.4
30–34	25.8	16.1	57.5	57.8	9.0	38.9	39.7
35–39	23.7	16.0	46.8	54.3	9.0	34.6	36.7
40 and over	27.7	20.6	42.4	49.7	12.7	30.8	38.7

* Estimate does not meet National Center for Health Statistics standards of reliability.

¹Race and Hispanic origin are reported separately on birth certificates; people of Hispanic origin may be of any race. In this table, non-Hispanic women are classified by race. Race categories are consistent with the 1997 Office of Management and Budget standards; see Technical Notes in this report. Single race is defined as only one race reported on the birth certificate.

²Includes births to race and origin groups not shown separately, such as Hispanic single-race White, Hispanic single-race Black, and non-Hispanic multiple-race women, and births with origin not stated.

³Includes all people of Hispanic origin of any race; see Technical Notes.

NOTE: For New York, mother's marital status is inferred; see reference 10 in this report.

SOURCE: National Center for Health Statistics, National Vital Statistics System, Natality.

Table 10. Birth rates for unmarried women: United States, 2010–2021, and by age and race and Hispanic origin of mother: United States, 2016–2021

[Rates are births to unmarried women per 1,000 unmarried women. Populations estimated as of July 1 for all years]

Race and Hispanic origin and year	Fertility rate ¹	Age of mother							
		15–19			20–24	25–29	30–34	35–39	40–44 ²
		Total	15–17	18–19					
All races and origins³									
2021.....	37.8	13.0	5.6	24.4	47.4	58.7	58.5	38.2	11.4
2020.....	38.4	14.0	6.1	26.0	49.2	59.9	58.3	36.9	11.3
2019.....	39.9	15.4	6.6	28.3	51.6	61.5	60.6	36.0	11.1
2018.....	40.1	16.0	7.1	29.2	52.2	62.8	59.5	35.2	10.6
2017.....	41.0	17.1	7.7	31.4	54.2	64.4	57.9	36.0	10.1
2016.....	42.4	18.5	8.6	33.5	56.6	65.8	59.2	35.6	10.0
2015.....	43.4	20.2	9.6	36.5	59.7	66.9	60.3	34.1	9.0
2014.....	43.9	22.0	10.6	39.4	61.6	67.6	58.1	33.4	8.5
2013.....	44.3	24.0	11.9	42.1	63.1	66.7	56.6	31.8	8.3
2012.....	45.3	26.7	13.7	45.8	64.7	67.2	56.3	30.9	8.5
2011.....	46.0	28.4	14.9	48.2	66.7	67.8	56.2	29.9	8.2
2010.....	47.5	31.1	16.8	52.0	70.0	69.2	56.3	29.6	8.0
Non-Hispanic, single race⁴									
White:									
2021.....	27.0	8.4	3.1	16.3	33.8	42.1	45.2	29.3	8.1
2020.....	27.5	9.0	3.3	17.5	35.1	42.8	45.1	27.8	8.2
2019.....	28.6	10.0	3.7	19.3	36.7	44.8	45.7	27.0	7.9
2018.....	28.8	10.6	4.0	20.3	37.6	45.7	43.9	25.9	7.5
2017.....	29.2	11.5	4.4	22.1	38.9	46.2	41.9	25.3	7.2
2016.....	30.3	12.4	5.0	23.5	40.9	47.3	43.0	25.2	6.8
Black:									
2021.....	52.1	21.8	9.4	40.8	76.8	82.9	63.9	36.7	10.7
2020.....	54.6	23.7	10.6	43.2	80.8	88.3	65.1	37.0	10.4
2019.....	56.7	25.7	11.3	46.2	83.5	87.4	68.4	37.5	10.5
2018.....	56.4	26.1	12.0	46.1	85.0	85.9	68.2	35.6	9.7
2017.....	57.5	27.3	12.6	48.7	88.8	89.3	66.2	35.1	8.9
2016.....	57.9	29.0	13.9	51.2	90.0	89.6	64.4	33.8	8.9
Hispanic⁵									
2021.....	55.7	19.7	9.2	36.4	68.0	87.0	88.7	61.9	21.4
2020.....	55.5	21.2	10.1	38.7	69.3	87.9	84.8	59.4	20.2
2019.....	57.9	23.2	11.3	41.5	73.8	90.6	91.5	55.8	20.0
2018.....	59.5	24.4	12.2	43.4	74.6	95.7	96.1	57.4	20.0
2017.....	62.5	26.3	13.3	47.0	78.6	102.3	98.7	64.2	18.7
2016.....	66.0	29.2	15.1	51.2	83.1	106.4	103.6	65.0	19.3

¹Rates computed by relating total births to unmarried mothers, regardless of age of mother, to unmarried women aged 15–44.²Birth rates computed by relating births to unmarried women aged 40 and over to unmarried women aged 40–44; see Technical Notes in this report.³Includes births to race and origin groups not shown separately, such as Hispanic single-race White, Hispanic single-race Black, and non-Hispanic multiple-race women, and births with origin not stated.⁴Race and Hispanic origin are reported separately on birth certificates; people of Hispanic origin may be of any race. In this table, non-Hispanic women are classified by race. Race categories are consistent with the 1997 Office of Management and Budget standards. Single race is defined as only one race reported on the birth certificate.⁵Includes all people of Hispanic origin of any race; see Technical Notes.

NOTES: Rates for 2020 have been revised and may differ from those published in "Births: Final Data for 2020"; see Technical Notes. For New York, mother's marital status is inferred; see reference 10 in this report.

SOURCE: National Center for Health Statistics, National Vital Statistics System, Natality.

Table 11. Selected demographic characteristics of births, by race and Hispanic origin of mother: United States, 2021

[Birth rates are births per 1,000 population. Fertility rates are computed by relating total births, regardless of age of mother, to women aged 15–44. Total fertility rates are sums of birth rates for 5-year age groups multiplied by 5. Unmarried rates are births to unmarried women per 1,000 unmarried women. Populations estimated as of July 1. Mean age at first birth is the arithmetic average of the age of mothers at the time of birth, computed directly from the frequency of first births by age of mother]

Characteristic	All races and origins ²	Non-Hispanic, single race ¹					
		White	Black	American Indian or Alaska Native	Asian	Native Hawaiian or Other Pacific Islander	Hispanic ³
				Number			
Births	3,664,292	1,887,656	517,889	26,124	213,813	9,531	885,916
				Rate			
Birth rate	11.0	9.7	12.5	10.8	11.2	15.8	14.1
Fertility rate	56.3	54.4	57.4	50.8	49.6	71.5	63.4
Total fertility rate	1,664.0	1,598.5	1,675.0	1,477.0	1,351.5	2,131.0	1,899.0
Unmarried rate	37.8	27.0	52.1	52.5	13.5	58.9	55.7
				Ratio			
Sex ratio ⁴	1,046	1,053	1,029	1,044	1,061	1,046	1,036
				Percent			
Births to mothers under age 20	4.1	2.7	6.1	8.2	0.5	4.7	6.3
4th- and higher-order births ⁵	12.9	10.9	17.9	23.6	5.9	28.2	15.4
Births to unmarried mothers	40.0	27.5	70.1	68.5	12.6	51.8	53.2
Mothers born in the 50 states or District of Columbia	78.7	93.6	83.7	98.6	23.9	36.6	55.8
Educational attainment of mother:							
High school diploma or higher	88.9	93.7	88.9	80.9	94.8	78.7	77.6
Bachelor's degree or higher	35.6	45.8	19.6	11.0	67.9	10.0	17.0
				Mean			
Age of mother at first birth	27.3	28.1	25.5	23.9	31.2	25.2	25.5

¹Race and Hispanic origin are reported separately on birth certificates; people of Hispanic origin may be of any race. In this table, non-Hispanic women are classified by race. Race categories are consistent with the 1997 Office of Management and Budget standards; see Technical Notes in this report. Single race is defined as only one race reported on the birth certificate.

²Includes births to race and origin groups not shown separately, such as Hispanic single-race White, Hispanic single-race Black, and non-Hispanic multiple-race women, and births with origin not stated.

³Includes all people of Hispanic origin of any race; see Technical Notes.

⁴Male births per 1,000 female births.

⁵Based on live-birth order.

SOURCE: National Center for Health Statistics, National Vital Statistics System, Natality.

Table 12. Selected demographic characteristics of births, by Hispanic origin of mother: United States, 2021

[Mean age at first birth is the arithmetic average of the age of mothers at the time of birth, computed directly from the frequency of first births by age of mother]

Characteristic	Total ¹	Mexican	Puerto Rican	Cuban	Dominican	Central and South American	Other and unknown Hispanic
				Number			
Births	885,916	485,127	70,729	24,437	33,373	178,067	94,183
				Ratio			
Sex ratio ²	1,036	1,036	1,035	1,029	1,047	1,033	1,041
				Percent			
Births to mothers under age 20	6.3	6.5	6.0	2.3	4.1	6.5	7.0
4th- and higher-order births ³	15.4	17.3	13.2	5.2	8.5	14.0	14.8
Mothers born in the 50 states or District of Columbia	55.8	64.5	72.1	44.0	32.1	21.2	75.8
Educational attainment of mother:							
High school diploma or higher	77.6	79.1	87.3	92.7	86.3	63.2	82.3
Bachelor's degree or higher	17.0	14.1	19.3	34.0	23.9	19.3	18.7
				Mean			
Age of mother at first birth	25.5	25.0	25.6	28.5	26.4	26.3	25.5

¹Includes origin not stated.²Male births per 1,000 female births.³Based on live-birth order.

NOTES: In this table, Hispanic women are classified only by place of origin; non-Hispanic women are not shown. Other and unknown Hispanic includes origins not otherwise classified, including Spaniards. See Technical Notes in this report.

SOURCE: National Center for Health Statistics, National Vital Statistics System, Natality.

Table 13. Selected medical and health characteristics of births, by race and Hispanic origin of mother: United States, 2021

Characteristic	All races and origins ²	Non-Hispanic, single race ¹					
		White	Black	American Indian or Alaska Native	Asian	Native Hawaiian or Other Pacific Islander	Hispanic ³
Percent							
Mother							
Prenatal care initiation:							
1st trimester	78.3	83.2	69.7	65.8	83.5	51.5	72.5
Late or no care	6.3	4.6	9.1	12.5	4.1	21.0	8.4
Smoked during pregnancy	4.6	6.7	3.8	12.7	0.3	2.9	1.2
Pregnancy resulted from infertility treatment	2.2	3.0	0.9	0.5	4.1	0.5	0.9
Mother received WIC food for herself during this pregnancy ⁴	29.9	19.0	45.6	43.1	16.4	31.6	46.7
Diabetes:							
Prepregnancy (diagnosis prior to this pregnancy)	1.1	0.9	1.5	2.9	1.3	2.1	1.2
Gestational (diagnosis in this pregnancy)	8.3	7.4	7.0	12.0	16.1	11.3	8.9
Overweight or obese (BMI of 25.0 or over) ⁵	58.3	54.2	67.9	69.3	38.0	77.2	65.8
Induction of labor	32.1	35.3	30.4	33.1	27.7	23.9	27.6
CNM delivery ⁶	10.7	11.2	9.5	19.4	8.9	10.2	10.1
Home births	1.4	2.1	0.8	0.9	0.4	0.8	0.5
Cesarean delivery (total)	32.1	31.0	36.8	29.2	33.1	32.5	31.6
Low-risk ⁷	26.3	25.2	31.2	23.0	28.4	29.8	25.5
Source of payment for the delivery:							
Medicaid	41.0	28.1	64.0	66.2	22.5	58.1	58.1
Private	51.7	65.0	30.8	23.2	72.7	28.9	32.1
Self-pay	3.9	3.5	2.1	1.8	1.9	6.4	6.5
Other ⁸	3.4	3.4	3.2	8.9	3.0	6.6	3.4
Infant was being breastfed at discharge ⁹	83.3	84.8	72.9	73.9	89.8	78.1	86.2
Infant							
Gestational age:							
Preterm ¹⁰	10.49	9.50	14.75	12.26	9.23	12.69	10.23
Early preterm ¹¹	2.81	2.31	4.95	3.08	2.33	3.55	2.67
Late preterm ¹²	7.67	7.18	9.80	9.18	6.90	9.14	7.57
Birthweight ¹³ :							
Very low birthweight ¹⁴	1.38	1.02	2.91	1.26	1.17	1.69	1.28
Low birthweight ¹⁵	8.52	7.03	14.66	8.11	9.24	9.29	7.82
Twin births ¹⁶	31.2	32.5	40.6	27.3	23.3	25.0	24.2
Triplet and higher-order births ¹⁷	80.0	93.3	81.9	11.5	42.1	—	62.5

— Quantity zero.

¹Race and Hispanic origin are reported separately on birth certificates; people of Hispanic origin may be of any race. In this table, non-Hispanic women are classified by race. Race categories are consistent with the 1997 Office of Management and Budget standards; see Technical Notes in this report. Single race is defined as only one race reported on the birth certificate.²Includes births to race and origin groups not shown separately, such as Hispanic single-race White, Hispanic single-race Black, and non-Hispanic multiple-race women, and births with origin not stated.³Includes all people of Hispanic origin of any race; see Technical Notes.⁴WIC is Special Supplemental Nutrition Program for Women, Infants, and Children.⁵BMI is body mass index.⁶Births delivered by certified nurse midwives.⁷Low-risk cesarean rate is the number of singleton, term (37 weeks or more of gestation based on the obstetric estimate), cephalic, cesarean deliveries to women having a first birth per 100 women delivering singleton, term, cephalic births.⁸Other includes Indian Health Service, CHAMPUS or TRICARE, other government (federal, state, or local), or charity.⁹Excludes data for California, which did not report if infant was being breastfed at discharge.¹⁰Born before 37 completed weeks of gestation based on the obstetric estimate; see Technical Notes.¹¹Born before 34 completed weeks of gestation based on the obstetric estimate; see Technical Notes.¹²Born between 34 and 36 completed weeks of gestation based on the obstetric estimate; see Technical Notes.¹³Equivalents of the gram weights in pounds are shown in the User Guide; see reference 10 in this report.¹⁴Less than 1,500 grams (3 lb. 4 oz.).¹⁵Less than 2,500 grams (5 lb. 8 oz.).¹⁶Live births in twin deliveries per 1,000 live births.¹⁷Live births in triplet and other higher-order multiple deliveries per 100,000 live births.

SOURCE: National Center for Health Statistics, National Vital Statistics System, Natality.

Table 14. Selected medical and health characteristics of births, by Hispanic origin of mother: United States, 2021

Characteristic	Total	Mexican	Puerto Rican	Cuban	Dominican	Central and South American	Other and unknown Hispanic
Mother							
				Percent			
Prenatal care initiation:							
1st trimester	72.5	73.8	76.6	81.6	72.8	65.1	74.1
Late or no care	8.4	7.7	6.4	5.4	7.7	11.7	7.7
Smoked during pregnancy	1.2	1.1	3.8	1.4	0.6	0.3	1.8
Pregnancy resulted from							
infertility treatment	0.9	0.7	1.4	1.6	1.2	0.9	1.1
Mother received WIC food for herself during this pregnancy ¹	46.7	46.7	45.7	41.2	49.9	47.3	46.3
Diabetes:							
Prepregnancy							
(diagnosis prior to this pregnancy)	1.2	1.4	1.3	0.8	1.1	0.9	1.3
Gestational							
(diagnosis in this pregnancy)	8.9	9.4	8.9	8.0	9.3	7.9	8.5
Overweight or obese							
(BMI of 25.0 or over) ²	65.8	68.2	64.8	57.5	63.1	61.2	65.7
Induction of labor	27.6	27.4	31.6	25.7	30.2	25.5	29.3
CNM delivery ³	10.1	9.7	13.2	6.7	9.5	11.4	8.9
Home births	0.5	0.5	0.9	0.7	0.5	0.5	0.7
Cesarean delivery (total)	31.6	30.3	33.3	44.6	40.6	30.5	32.3
Low-risk ⁴	25.5	24.2	27.4	37.8	29.7	25.0	25.9
Source of payment for the delivery:							
Medicaid	58.1	58.8	57.9	50.5	63.4	56.0	58.7
Private	32.1	32.0	36.2	45.2	30.4	28.0	34.1
Self-pay	6.5	6.0	1.3	2.0	2.8	12.6	3.9
Other ⁵	3.4	3.2	4.6	2.3	3.3	3.4	3.2
Infant was being breastfed at discharge ⁶	86.2	86.1	81.9	90.1	87.9	87.8	85.1
Infant							
Gestational age:							
Preterm ⁷	10.23	10.07	11.55	9.93	10.28	9.78	11.02
Early preterm ⁸	2.67	2.61	3.33	2.74	2.92	2.41	2.84
Late preterm ⁹	7.57	7.46	8.22	7.19	7.36	7.37	8.18
Birthweight¹⁰:							
Very low birthweight ¹¹	1.28	1.23	1.76	1.41	1.51	1.11	1.39
Low birthweight ¹²	7.82	7.54	9.79	7.41	8.60	7.34	8.52
Twin births ¹³	24.2	23.1	30.9	28.9	29.7	21.8	25.6
Triplet and higher-order births ¹⁴	62.5	64.1	69.3	110.5	116.9	41.0	58.4

¹WIC is Special Supplemental Nutrition Program for Women, Infants, and Children.²BMI is body mass index.³Births delivered by certified nurse midwives.⁴Low-risk cesarean rate is the number of singleton, term (37 weeks or more of gestation based on the obstetric estimate), cephalic, cesarean deliveries to women having a first birth per 100 women delivering singleton, term, cephalic births.⁵Other includes Indian Health Service, CHAMPUS or TRICARE, other government (federal, state, or local), or charity.⁶Excludes data for California, which did not report if infant was being breastfed at discharge.⁷Born before 37 completed weeks of gestation based on the obstetric estimate; see Technical Notes in this report.⁸Born before 34 completed weeks of gestation based on the obstetric estimate; see Technical Notes.⁹Born between 34 and 36 completed weeks of gestation based on the obstetric estimate; see Technical Notes.¹⁰Equivalents of the gram weights in pounds are shown in the User Guide; see reference 10 in this report.¹¹Less than 1,500 grams (3 lb. 4 oz.).¹²Less than 2,500 grams (5 lb. 8 oz.).¹³Live births in twin deliveries per 1,000 live births.¹⁴Live births in triplet and other higher-order multiple deliveries per 100,000 live births.

NOTES: Race and Hispanic origin are reported separately on birth certificates; people of Hispanic origin may be of any race. In this table, Hispanic women are classified only by place of origin. Other and unknown Hispanic includes origins not otherwise classified, including Spaniards. See Technical Notes in this report.

SOURCE: National Center for Health Statistics, National Vital Statistics System, Natality.

Table 15. Mothers who smoked for the 3 months before pregnancy and anytime during pregnancy and those who quit before and during pregnancy, by age and race and Hispanic origin of mother: United States, 2021.

Race and Hispanic origin and tobacco use	All ages	Under 20	20–24	25–29	30–34	35–39	40–54
All races and origins ¹				Percent			
3 months before	5.9	5.9	7.9	6.6	5.0	4.4	4.0
Anytime during pregnancy	4.6	4.5	6.0	5.2	4.0	3.6	3.3
First trimester	4.5	4.3	5.8	5.1	3.9	3.5	3.2
Second trimester	3.9	3.4	4.8	4.4	3.5	3.1	2.8
Third trimester	3.7	3.2	4.5	4.1	3.3	3.0	2.7
Quit before pregnancy ²	23.3	27.3	26.0	23.1	21.6	21.4	19.2
Quit during pregnancy ³	19.9	28.9	23.9	19.7	17.4	16.5	16.7
Non-Hispanic, single race ⁴							
White:							
3 months before	8.4	13.0	13.6	9.4	6.4	5.9	5.8
Anytime during pregnancy	6.7	10.0	10.6	7.5	5.2	4.8	4.8
First trimester	6.6	9.6	10.3	7.4	5.1	4.7	4.8
Second trimester	5.7	7.8	8.7	6.5	4.5	4.2	4.3
Third trimester	5.5	7.3	8.2	6.1	4.4	4.0	4.1
Quit before pregnancy ²	21.5	25.0	23.7	21.2	20.4	19.9	17.4
Quit during pregnancy ³	18.2	26.7	22.0	17.8	15.7	15.0	15.1
Black:							
3 months before	4.8	1.9	3.8	5.4	5.8	5.1	4.0
Anytime during pregnancy	3.8	1.5	2.8	4.2	4.7	4.1	3.3
First trimester	3.7	1.4	2.7	4.1	4.6	4.0	3.2
Second trimester	3.1	1.1	2.1	3.4	3.9	3.5	2.8
Third trimester	2.9	1.0	2.0	3.1	3.7	3.4	2.7
Quit before pregnancy ²	24.1	30.1	29.2	24.9	21.5	21.2	20.0
Quit during pregnancy ³	23.2	32.1	29.2	24.6	20.7	17.6	19.9
Hispanic ⁵							
3 months before	1.8	1.5	2.0	1.9	1.8	1.6	1.5
Anytime during pregnancy	1.2	0.9	1.2	1.2	1.3	1.1	1.1
First trimester	1.2	0.8	1.2	1.2	1.3	1.1	1.1
Second trimester	0.9	0.6	0.8	1.0	1.0	0.9	0.9
Third trimester	0.8	0.5	0.8	0.9	0.9	0.8	0.8
Quit before pregnancy ²	36.8	43.5	42.0	37.9	31.8	32.9	30.1
Quit during pregnancy ³	30.3	42.9	36.7	29.5	26.5	26.0	23.4
All races and origins ¹				Number			
Total	3,664,292	148,850	648,484	1,023,989	1,115,055	592,179	135,735
Not stated 3 months before	15,711	807	3,270	4,362	4,317	2,366	589
Not stated during pregnancy	15,541	775	3,209	4,340	4,277	2,362	578
Quit before pregnancy ² :							
Smoked before pregnancy	214,708	8,776	50,983	67,289	56,075	26,217	5,368
Unknown if quit	339	13	73	100	85	60	8
Quit during pregnancy ³ :							
Smoked before pregnancy	168,086	6,591	38,599	52,727	44,732	21,004	4,433
Unknown if quit	220	14	54	60	51	30	11
Non-Hispanic, single race ⁴							
White:							
Total	1,887,656	50,652	286,140	532,001	633,212	321,036	64,615
Not stated 3 months before	6,896	332	1,378	1,930	1,929	1,102	225
Not stated during pregnancy	6,808	322	1,346	1,913	1,908	1,101	218
Quit before pregnancy ² :							
Smoked before pregnancy	158,013	6,529	38,665	49,705	40,631	18,777	3,706
Unknown if quit	171	7	37	49	41	34	3
Quit during pregnancy ³ :							
Smoked before pregnancy	126,069	5,021	30,077	39,800	32,802	15,255	3,114
Unknown if quit	95	6	25	22	19	17	6

See footnotes at end of table.

Table 15. Mothers who smoked for the 3 months before pregnancy and anytime during pregnancy and those who quit before and during pregnancy, by age and race and Hispanic origin of mother: United States, 2021—Con.

Race and Hispanic origin and tobacco use	All ages	Under 20	20–24	25–29	30–34	35–39	40–54
Non-Hispanic, single race ⁴ —Con.				Number			
Black:							
Total	517,889	31,737	117,698	148,309	130,788	70,073	19,284
Not stated 3 months before	2,628	124	623	743	728	333	77
Not stated during pregnancy	2,593	116	616	736	719	331	75
Quit before pregnancy ² :							
Smoked before pregnancy	24,902	614	4,450	7,978	7,534	3,556	770
Unknown if quit	38	—	7	13	12	6	—
Quit during pregnancy ³ :							
Smoked before pregnancy	19,565	460	3,293	6,180	6,095	2,894	643
Unknown if quit	49	2	7	18	13	8	1
Hispanic⁵							
Total	885,916	56,033	199,773	256,844	220,530	120,329	32,407
Not stated 3 months before	2,571	202	651	700	586	328	104
Not stated during pregnancy	2,534	193	631	704	582	323	101
Quit before pregnancy ² :							
Smoked before pregnancy	16,281	824	4,004	4,957	4,047	1,968	481
Unknown if quit	57	1	11	17	18	8	2
Quit during pregnancy ³ :							
Smoked before pregnancy	10,658	498	2,415	3,179	2,835	1,378	353
Unknown if quit	31	1	13	8	4	3	2

— Quantity zero.

¹Includes births to race and origin groups not shown separately, such as Hispanic single-race White, Hispanic single-race Black, and non-Hispanic multiple-race women, and births with origin not stated.²Quit in the 3 months before pregnancy; births to women not reporting smoking during pregnancy per 100 women who smoked in the 3 months before pregnancy. See Technical Notes in this report.³Quit during pregnancy; births to women not reporting smoking in the third trimester of pregnancy per 100 women who smoked in either the first or second trimester. See Technical Notes.⁴Race and Hispanic origin are reported separately on birth certificates; people of Hispanic origin may be of any race. In this table, non-Hispanic women are classified by race. Race categories are consistent with the 1997 Office of Management and Budget standards; see Technical Notes. Single race is defined as only one race reported on the birth certificate.⁵Includes all people of Hispanic origin of any race; see Technical Notes.

SOURCE: National Center for Health Statistics, National Vital Statistics System, Natality.

Table 16. Trimester prenatal care began, by age and race and Hispanic origin of mother: United States, 2021

Race and Hispanic origin of mother and trimester care began	All ages	Under 20	20–24	25–29	30–34	35–39	40–54
All races and origins¹				Percent			
1st trimester	78.3	61.6	72.3	78.6	82.2	81.7	78.0
2nd trimester	15.4	25.6	19.4	15.3	12.8	13.3	16.2
Late or no care	6.3	12.7	8.3	6.2	5.0	5.0	5.9
3rd trimester	4.2	8.5	5.6	4.1	3.3	3.4	3.9
No care	2.1	4.2	2.7	2.0	1.7	1.7	1.9
				Number			
Total	3,664,292	148,850	648,484	1,023,989	1,115,055	592,179	135,735
Not stated	77,416	3,765	14,614	21,136	22,434	12,424	3,043
Non-Hispanic, single race²				Percent			
White:							
1st trimester	83.2	69.3	77.3	83.2	86.1	85.3	81.9
2nd trimester	12.2	22.0	16.5	12.3	10.1	10.7	13.2
Late or no care	4.6	8.7	6.2	4.5	3.8	4.0	4.8
3rd trimester	3.1	6.2	4.4	3.1	2.6	2.7	3.3
No care	1.4	2.6	1.8	1.4	1.2	1.3	1.5
				Number			
Total	1,887,656	50,652	286,140	532,001	633,212	321,036	64,615
Not stated	33,310	1,009	5,131	8,841	10,993	6,041	1,295
Black:							
				Percent			
1st trimester	69.7	58.2	66.9	70.2	72.5	73.0	71.5
2nd trimester	21.1	28.1	23.0	20.8	19.4	19.1	20.5
Late or no care	9.1	13.7	10.2	9.0	8.1	7.9	8.0
3rd trimester	5.6	8.5	6.2	5.5	5.0	5.0	5.1
No care	3.5	5.2	4.0	3.5	3.1	2.9	2.9
				Number			
Total	517,889	31,737	117,698	148,309	130,788	70,073	19,284
Not stated	13,434	896	3,152	3,859	3,332	1,734	461
Hispanic³				Percent			
1st trimester	72.5	56.8	68.8	74.2	76.3	75.4	72.0
2nd trimester	19.1	27.4	21.2	18.1	16.9	17.9	20.8
Late or no care	8.4	15.8	10.1	7.7	6.8	6.7	7.3
3rd trimester	5.7	10.7	6.8	5.2	4.6	4.5	5.0
No care	2.7	5.1	3.2	2.5	2.2	2.1	2.3
				Number			
Total	885,916	56,033	199,773	256,844	220,530	120,329	32,407
Not stated	20,034	1,530	4,810	5,779	4,627	2,560	728

¹Includes births to race and origin groups not shown separately, such as Hispanic single-race White, Hispanic single-race Black, and non-Hispanic multiple-race women, and births with origin not stated.

²Race and Hispanic origin are reported separately on birth certificates; people of Hispanic origin may be of any race. In this table, non-Hispanic women are classified by race. Race categories are consistent with the 1997 Office of Management and Budget standards; see Technical Notes in this report. Single race is defined as only one race reported on the birth certificate.

³Includes all people of Hispanic origin of any race; see Technical Notes.

SOURCE: National Center for Health Statistics, National Vital Statistics System, Natality.

Table 17. Births, by method of delivery: United States, 2010–2021, and by race and Hispanic origin of mother: United States, 2016–2021

Race and Hispanic origin and year	Vaginal			Cesarean			Cesarean			Vaginal birth after previous cesarean delivery ⁷	
	All births	Total ¹	After previous cesarean	Total ²	Primary	Low-risk ³	Not stated	Total ⁴	Primary ⁵		Low-risk ⁶
All races and origins ⁸	Number						Percent				
2021.....	3,664,292	2,486,856	79,555	1,174,545	691,550	316,349	2,891	32.1	22.3	26.3	14.2
2020.....	3,613,647	2,462,904	77,776	1,148,692	666,599	310,303	2,051	31.8	21.9	25.9	13.9
2019.....	3,747,540	2,558,882	80,140	1,186,397	683,900	314,016	2,261	31.7	21.6	25.6	13.8
2018.....	3,791,712	2,581,992	78,842	1,208,176	693,276	319,022	1,544	31.9	21.7	25.9	13.3
2017.....	3,855,500	2,621,010	76,301	1,232,339	710,963	325,086	2,151	32.0	21.9	26.0	12.8
2016.....	3,945,875	2,684,803	75,244	1,258,581	728,500	329,614	2,491	31.9	21.8	25.7	12.4
2015.....	3,978,497	2,703,504	---	1,272,503	---	331,982	2,490	32.0	---	25.8	---
2014.....	3,988,076	2,699,951	---	1,284,551	---	337,086	3,574	32.2	---	26.0	---
2013.....	3,932,181	2,642,892	---	1,284,339	---	344,405	4,950	32.7	---	26.8	---
2012.....	3,952,841	2,650,744	---	1,296,070	---	355,942	6,027	32.8	---	27.2	---
2011.....	3,953,590	2,651,428	---	1,293,267	---	359,669	8,895	32.8	---	27.2	---
2010.....	3,999,386	2,680,947	---	1,309,182	---	368,523	9,257	32.8	---	27.5	---
Non-Hispanic, single race ⁹											
White:											
2021.....	1,887,656	1,301,124	38,908	585,346	353,971	161,487	1,186	31.0	21.9	25.2	14.4
2020.....	1,843,432	1,275,917	36,967	566,811	339,770	157,635	704	30.8	21.5	24.9	14.0
2019.....	1,915,912	1,327,934	38,442	587,111	348,616	160,622	867	30.7	21.3	24.7	13.9
2018.....	1,956,413	1,353,424	38,345	602,361	356,796	164,087	628	30.8	21.4	24.9	13.5
2017.....	1,992,461	1,375,702	37,295	615,830	366,505	167,434	929	30.9	21.5	24.9	13.0
2016.....	2,056,332	1,419,788	37,442	635,588	379,240	172,006	956	30.9	21.5	24.7	12.8
Black:											
2021.....	517,889	327,049	12,687	190,500	111,166	47,977	340	36.8	26.2	31.2	13.8
2020.....	529,811	337,264	12,911	192,338	110,612	48,448	209	36.3	25.5	30.6	13.7
2019.....	548,075	351,191	13,159	196,672	113,001	48,481	212	35.9	25.1	30.0	13.6
2018.....	552,029	352,750	12,702	199,117	114,150	49,481	162	36.1	25.2	30.3	13.0
2017.....	560,715	358,467	12,457	201,991	117,054	50,217	257	36.0	25.3	30.4	12.8
2016.....	558,622	357,859	11,763	200,460	117,410	50,287	303	35.9	25.4	30.3	12.4
Hispanic ¹⁰											
2021.....	885,916	605,819	19,485	279,607	154,162	70,443	490	31.6	20.8	25.5	13.5
2020.....	866,713	594,463	19,469	271,865	145,786	67,517	385	31.4	20.2	25.1	13.4
2019.....	886,467	608,445	19,612	277,578	147,597	66,705	444	31.3	20.1	24.8	13.1
2018.....	886,210	605,674	19,371	280,386	147,149	67,040	150	31.6	20.1	25.4	12.7
2017.....	898,764	613,101	18,423	285,379	150,592	67,860	284	31.8	20.2	25.6	12.0
2016.....	918,447	627,095	17,847	290,832	153,462	67,278	520	31.7	20.1	25.1	11.5

See footnotes at end of table.

Table 17. Births, by method of delivery: United States, 2010–2021, and by race and Hispanic origin of mother: United States, 2016–2021—Con.

--- Comparable data were not available for the 50 states and the District of Columbia for 2010–2015 because not all reporting areas had adopted the 2003 U.S. Certificate of Live Birth.

¹Includes unknown type of vaginal delivery; see Technical Notes in this report.

²Includes unknown type of cesarean delivery; see Technical Notes.

³Low-risk cesarean is defined as singleton, term (37 or more completed weeks of gestation based on the obstetric estimate), cephalic, cesarean deliveries to women having a first birth.

⁴Percentage of all live births delivered by cesarean.

⁵Primary cesarean rate is the number of births to women having a cesarean delivery per 100 births to women without a previous cesarean.

⁶Low-risk cesarean rate is the number of singleton, term (37 or more completed weeks of gestation based on the obstetric estimate), cephalic, cesarean deliveries to women having a first birth per 100 women delivering singleton, term, cephalic, first births.

⁷Vaginal birth after cesarean delivery rate is the number of births to women having a vaginal delivery per 100 births to women with a previous cesarean delivery.

⁸Includes births to race and origin groups not shown separately, such as Hispanic single-race White, Hispanic single-race Black, and non-Hispanic multiple-race women, and births with origin not stated.

⁹Race and Hispanic origin are reported separately on birth certificates; people of Hispanic origin may be of any race. In this table, non-Hispanic women are classified by race. Race categories are consistent with the 1997 Office of Management and Budget standards; see Technical Notes. Single race is defined as only one race reported on the birth certificate.

¹⁰Includes all people of Hispanic origin of any race; see Technical Notes.

SOURCE: National Center for Health Statistics, National Vital Statistics System, Natality.

Table 18. Births, by method of delivery and age and race and Hispanic origin of mother: United States, 2021

Race and Hispanic origin and age of mother	Vaginal			Cesarean			Cesarean			Vaginal birth after previous cesarean delivery ⁷	
	All births	Total ¹	After previous cesarean	Total ²	Primary	Low-risk ³	Not stated	Total ⁴	Primary ⁵		Low-risk ⁶
All races and origins ⁸	Number							Percent			
All ages	3,664,292	2,486,856	79,555	1,174,545	691,550	316,349	2,891	32.1	22.3	26.3	14.2
Under 20	148,850	119,882	441	28,874	26,312	17,688	94	19.4	18.1	15.9	14.8
20-24	648,484	483,317	7,527	164,639	118,614	67,829	528	25.4	20.0	21.6	14.1
25-29	1,023,989	719,464	21,098	303,694	184,866	88,564	831	29.7	21.0	25.7	15.1
30-34	1,115,055	737,496	28,650	376,767	208,310	87,789	792	33.8	22.7	29.4	14.6
35-39	592,179	355,459	17,897	236,208	119,295	43,045	512	39.9	26.1	38.2	13.3
40-54	135,735	71,238	3,942	64,363	34,153	11,434	134	47.5	33.7	51.4	11.6
Non-Hispanic, single race ⁹											
White, all ages	1,887,656	1,301,124	38,908	585,346	353,971	161,487	1,186	31.0	21.9	25.2	14.4
Under 20	50,652	40,409	104	10,207	9,398	6,180	36	20.2	18.9	16.1	11.5
20-24	286,140	215,201	2,704	70,762	51,814	28,613	177	24.7	19.6	20.1	12.5
25-29	532,001	381,395	9,404	150,276	96,784	46,699	330	28.3	20.7	23.6	15.0
30-34	633,212	429,635	15,115	203,224	117,275	50,314	353	32.1	22.1	27.5	15.0
35-39	321,036	199,204	9,604	121,591	62,921	23,752	241	37.9	24.9	35.9	14.1
40-54	64,615	35,280	1,977	29,286	15,779	5,929	49	45.4	32.2	49.1	12.8
Black, all ages	517,889	327,049	12,687	190,500	111,166	47,977	340	36.8	26.2	31.2	13.8
Under 20	31,737	24,703	103	7,021	6,415	4,259	13	22.1	20.7	18.4	14.7
20-24	117,698	82,816	1,555	34,802	25,217	14,475	80	29.6	23.7	26.1	14.0
25-29	148,309	96,144	3,920	52,052	29,918	13,205	113	35.1	24.5	33.8	15.1
30-34	130,788	77,472	4,214	53,235	27,315	9,520	81	40.7	27.2	40.4	14.0
35-39	70,073	37,113	2,346	32,919	16,544	4,934	41	47.0	32.3	49.5	12.5
40-54	19,284	8,801	549	10,471	5,757	1,584	12	54.3	41.1	61.8	10.4
Hispanic ¹⁰											
All ages	885,916	605,819	19,485	279,607	154,162	70,443	490	31.6	20.8	25.5	13.5
Under 20	56,033	46,225	194	9,776	8,821	6,084	32	17.5	16.1	14.4	17.0
20-24	199,773	151,319	2,683	48,333	33,730	20,165	121	24.2	18.5	21.3	15.5
25-29	256,844	179,352	5,936	77,353	42,421	20,119	139	30.1	19.7	27.6	14.5
30-34	220,530	141,840	6,195	78,580	38,416	14,959	110	35.7	22.1	33.0	13.4
35-39	120,329	70,142	3,571	50,119	23,122	7,139	68	41.7	25.8	41.7	11.7
40-54	32,407	16,941	906	15,446	7,652	1,977	20	47.7	32.3	53.5	10.4

¹Includes unknown type of vaginal delivery; see Technical Notes in this report.

²Includes unknown type of cesarean delivery; see Technical Notes.

³Low-risk cesarean is defined as singleton, term (37 or more completed weeks of gestation based on the obstetric estimate), cephalic, cesarean deliveries to women having a first birth.

⁴Percentage of all live births delivered by cesarean.

⁵Primary cesarean rate is the number of births to women having a cesarean delivery per 100 births to women without a previous cesarean.

⁶Low-risk cesarean rate is the number of singleton, term (37 or more completed weeks of gestation based on the obstetric estimate), cephalic, cesarean deliveries to women having a first birth per 100 women delivering singleton, term, cephalic, first births.

⁷Vaginal birth after cesarean delivery rate is the number of births to women having a vaginal delivery per 100 births to women with a previous cesarean delivery.

⁸Includes births to race and origin groups not shown separately, such as Hispanic single-race White, Hispanic single-race Black, and non-Hispanic multiple-race women, and births with origin not stated.

⁹Race and Hispanic origin are reported separately on birth certificates; people of Hispanic origin may be of any race. In this table, non-Hispanic women are classified by race. Race categories are consistent with the 1997 Office of Management and Budget standards; see Technical Notes. Single race is defined as only one race reported on the birth certificate.

¹⁰Includes all people of Hispanic origin of any race; see Technical Notes.

SOURCE: National Center for Health Statistics, National Vital Statistics System, Natality.

Table 19. Principal source of payment for the delivery, by age and race and Hispanic origin of mother: United States, 2021

[Percentages are number of live births with specified source of payment per 100 live births in specified group]

Race and Hispanic origin of mother and source of payment	All ages	Under 20	20–24	25–29	30–34	35–39	40–54
All races and origins¹				Percent			
Total	100.0	100.0	100.0	100.0	100.0	100.0	100.0
Medicaid	41.0	78.8	63.0	43.9	29.4	26.8	30.0
Private insurance	51.7	14.7	28.9	48.4	63.9	66.3	62.1
Self-pay	3.9	3.8	3.9	4.0	3.6	4.0	5.0
Other ²	3.4	2.7	4.3	3.8	3.1	2.9	3.0
				Number			
Total	3,664,292	148,850	648,484	1,023,989	1,115,055	592,179	135,735
Not stated	28,050	1,175	5,749	8,285	7,720	4,155	966
Non-Hispanic, single race³				Percent			
White:							
Total	100.0	100.0	100.0	100.0	100.0	100.0	100.0
Medicaid	28.1	73.7	52.5	30.7	18.3	16.5	18.5
Private insurance	65.0	21.5	39.3	61.8	75.6	77.3	74.1
Self-pay	3.5	1.8	3.6	3.7	3.2	3.5	4.5
Other ²	3.4	3.0	4.7	3.9	3.0	2.7	2.9
				Number			
Total	1,887,656	50,652	286,140	532,001	633,212	321,036	64,615
Not stated	14,029	441	2,584	4,185	4,166	2,231	422
Black:							
Total	100.0	100.0	100.0	100.0	100.0	100.0	100.0
Medicaid	64.0	84.9	75.8	67.4	56.1	47.7	43.5
Private insurance	30.8	11.9	19.3	27.3	38.2	46.6	50.6
Self-pay	2.1	1.4	1.6	2.0	2.4	2.7	2.8
Other ²	3.2	1.9	3.3	3.3	3.2	3.1	3.1
				Number			
Total	517,889	31,737	117,698	148,309	130,788	70,073	19,284
Not stated	3,548	182	803	1,088	894	463	118
Hispanic⁴				Percent			
Total	100.0	100.0	100.0	100.0	100.0	100.0	100.0
Medicaid	58.1	80.0	70.3	58.2	48.7	47.1	50.0
Private insurance	32.1	9.9	19.7	32.3	41.8	42.7	38.8
Self-pay	6.5	7.4	6.0	6.0	6.5	7.3	8.4
Other ²	3.4	2.7	3.9	3.6	3.1	2.9	2.9
				Number			
Total	885,916	56,033	199,773	256,844	220,530	120,329	32,407
Not stated	6,336	388	1,681	1,850	1,410	776	231

¹Includes births to race and origin groups not shown separately, such as Hispanic single-race White, Hispanic single-race Black, and non-Hispanic multiple-race women, and births with origin not stated.²Other includes Indian Health Service, CHAMPUS or TRICARE, other government (federal, state, or local), or charity.³Race and Hispanic origin are reported separately on birth certificates; people of Hispanic origin may be of any race. In this table, non-Hispanic women are classified by race. Race categories are consistent with the 1997 Office of Management and Budget standards; see Technical Notes in this report. Single race is defined as only one race reported on the birth certificate.⁴Includes all people of Hispanic origin of any race.

SOURCE: National Center for Health Statistics, National Vital Statistics System, Natality.

Table 20. Births, by gestational age: United States, 2010–2021, and by race and Hispanic origin of mother: United States, 2016–2021

Race and Hispanic origin of mother and year	All births	Preterm ¹						Term ¹					Not stated
		Total under 37	Total under 34	Early			Late	Total 37–41	Early	Full	Late	Post term ¹ 42 and over	
				Under 28	28–31	32–33	34–36		37–38	39–40	41		
All races and origins ²	Number	Percent											Number
2021.....	3,664,292	10.49	2.81	0.64	0.95	1.22	7.67	89.27	28.76	55.90	4.61	0.25	2,992
2020.....	3,613,647	10.09	2.70	0.64	0.90	1.15	7.40	89.66	27.78	57.00	4.88	0.25	2,478
2019.....	3,747,540	10.23	2.77	0.66	0.93	1.18	7.46	89.52	27.31	57.02	5.19	0.25	2,406
2018.....	3,791,712	10.02	2.75	0.66	0.91	1.18	7.28	89.68	26.53	57.24	5.90	0.30	2,507
2017.....	3,855,500	9.93	2.76	0.67	0.92	1.17	7.17	89.74	26.00	57.49	6.25	0.33	2,759
2016.....	3,945,875	9.85	2.76	0.68	0.92	1.17	7.09	89.80	25.47	57.94	6.38	0.35	3,454
2015.....	3,978,497	9.63	2.76	0.68	0.91	1.17	6.87	89.98	24.99	58.47	6.51	0.40	2,926
2014.....	3,988,076	9.57	2.75	0.69	0.91	1.15	6.82	90.43	24.76	58.72	6.53	0.42	3,246
2013.....	3,932,181	9.62	2.79	0.70	0.92	1.17	6.83	90.38	24.81	58.85	6.31	0.41	7,467
2012.....	3,952,841	9.76	2.80	0.71	0.92	1.17	6.96	90.24	25.47	58.30	6.06	0.40	8,380
2011.....	3,953,590	9.81	2.81	0.70	0.93	1.18	6.99	90.19	26.09	57.51	6.16	0.43	9,290
2010.....	3,999,386	9.98	2.84	0.71	0.94	1.18	7.15	90.01	27.29	56.08	6.19	0.46	10,538
Non-Hispanic, single race ³													
White:													
2021.....	1,887,656	9.50	2.31	0.44	0.77	1.10	7.18	90.19	27.04	57.93	5.23	0.31	1,215
2020.....	1,843,432	9.10	2.21	0.44	0.74	1.03	6.90	90.58	25.98	59.08	5.53	0.32	1,001
2019.....	1,915,912	9.26	2.27	0.44	0.77	1.06	6.99	90.42	25.56	59.01	5.84	0.32	924
2018.....	1,956,413	9.09	2.26	0.44	0.76	1.07	6.83	90.53	24.68	59.16	6.70	0.37	924
2017.....	1,992,461	9.05	2.30	0.46	0.77	1.06	6.76	90.54	24.16	59.27	7.11	0.40	1,051
2016.....	2,056,332	9.04	2.33	0.48	0.78	1.07	6.72	90.53	23.64	59.61	7.28	0.43	1,409
Black:													
2021.....	517,889	14.75	4.95	1.44	1.67	1.85	9.80	85.04	32.27	49.28	3.49	0.21	391
2020.....	529,811	14.36	4.82	1.47	1.58	1.77	9.54	85.43	31.22	50.47	3.74	0.21	300
2019.....	548,075	14.39	4.94	1.52	1.63	1.79	9.45	85.39	30.40	50.93	4.06	0.21	326
2018.....	552,029	14.13	4.90	1.51	1.60	1.79	9.23	85.62	29.64	51.34	4.64	0.25	384
2017.....	560,715	13.93	4.87	1.53	1.62	1.72	9.06	85.79	28.93	51.90	4.96	0.28	445
2016.....	558,622	13.77	4.93	1.56	1.61	1.75	8.84	85.94	28.48	52.42	5.04	0.30	506
Hispanic ⁴													
2021.....	885,916	10.23	2.67	0.63	0.91	1.14	7.57	89.62	29.83	55.62	4.17	0.15	496
2020.....	866,713	9.84	2.52	0.60	0.84	1.07	7.32	90.01	29.00	56.61	4.41	0.15	348
2019.....	886,467	9.97	2.61	0.63	0.87	1.11	7.36	89.87	28.66	56.52	4.68	0.16	344
2018.....	886,210	9.73	2.56	0.62	0.84	1.09	7.17	90.07	28.05	56.83	5.19	0.20	382
2017.....	898,764	9.62	2.56	0.62	0.85	1.09	7.05	90.16	27.58	57.15	5.43	0.23	455
2016.....	918,447	9.45	2.98	0.62	0.84	1.08	6.92	90.30	27.02	57.85	5.43	0.25	676

See footnotes at end of table.

Table 20. Births, by gestational age: United States, 2010–2021, and by race and Hispanic origin of mother: United States, 2016–2021—Con.

Race and Hispanic origin of mother and year	All births	Preterm ¹						Term ¹				Post term ¹ 42 and over	Not stated	
		Total under 37	Total under 34	Early			Late	Total 37–41	Early 37–38	Full 39–40	Late 41			
All races and origins²														
							Number							
2021.....	3,664,292	383,979	103,004	23,527	34,731	44,746	280,975	3,268,342	1,052,935	2,046,786	168,621	8,979	2,992	
2020.....	3,613,647	364,487	97,420	23,286	32,463	41,671	267,067	3,237,819	1,003,260	2,058,396	176,163	8,863	2,478	
2019.....	3,747,540	383,061	103,759	24,758	34,748	44,253	279,302	3,352,638	1,022,874	2,135,518	194,246	9,435	2,406	
2018.....	3,791,712	379,777	104,031	24,945	34,386	44,700	275,746	3,398,110	1,005,405	2,169,016	223,689	11,318	2,507	
2017.....	3,855,500	382,726	106,417	25,913	35,476	45,028	276,309	3,457,455	1,001,601	2,214,983	240,871	12,560	2,759	
2016.....	3,945,875	388,218	108,836	26,618	36,239	45,979	279,382	3,540,290	1,004,224	2,284,399	251,667	13,913	3,454	
2015.....	3,978,497	382,786	109,660	26,996	36,149	46,515	273,126	3,577,072	993,599	2,324,474	258,999	15,713	2,926	
2014.....	3,988,076	381,321	109,474	27,320	36,245	45,909	271,847	3,586,933	986,745	2,339,796	260,392	19,822	3,246	
2013.....	3,932,181	377,655	109,435	27,550	36,096	45,789	268,220	3,283,457	973,569	2,309,888	247,476	16,126	7,467	
2012.....	3,952,841	385,082	110,444	28,004	36,366	46,074	274,638	3,304,365	1,004,750	2,299,615	239,148	15,866	8,380	
2011.....	3,953,590	386,855	111,002	27,737	36,758	46,507	275,853	3,297,649	1,029,157	2,268,492	242,999	16,797	9,290	
2010.....	3,999,386	398,402	113,131	28,437	37,435	47,259	285,271	3,325,476	1,088,564	2,236,912	246,768	18,413	10,538	
Non-Hispanic, single race³														
White:														
2021.....	1,887,656	179,123	43,671	8,223	14,603	20,845	135,452	1,701,379	510,021	1,092,775	98,583	5,939	1,215	
2020.....	1,843,432	167,679	40,638	8,043	13,681	18,914	127,041	1,668,915	478,611	1,088,456	101,848	5,837	1,001	
2019.....	1,915,912	177,339	43,532	8,487	14,735	20,310	133,807	1,731,535	489,542	1,130,124	111,869	6,114	924	
2018.....	1,956,413	177,842	44,287	8,665	14,764	20,858	133,555	1,770,366	482,550	1,156,775	131,041	7,281	924	
2017.....	1,992,461	180,322	45,761	9,200	15,429	21,132	134,561	1,803,063	481,048	1,180,394	141,621	8,025	1,051	
2016.....	2,056,332	185,854	47,823	9,766	16,101	21,956	138,031	1,860,243	485,846	1,224,872	149,525	8,826	1,409	
Black:														
2021.....	517,889	76,334	25,641	7,445	8,640	9,556	50,693	440,079	167,006	255,016	18,057	1,085	391	
2020.....	529,811	76,059	25,537	7,802	8,381	9,354	50,522	452,357	165,321	267,237	19,799	1,095	300	
2019.....	548,075	78,829	27,063	8,332	8,927	9,804	51,766	467,745	166,528	278,956	22,261	1,175	326	
2018.....	552,029	77,939	27,008	8,348	8,804	9,856	50,931	472,316	163,530	283,202	25,584	1,390	384	
2017.....	560,715	78,024	27,274	8,548	9,070	9,656	50,750	480,661	162,072	290,803	27,786	1,585	445	
2016.....	558,622	76,834	27,501	8,729	8,987	9,785	49,333	479,630	158,937	292,539	28,154	1,652	506	
Hispanic⁴														
2021.....	885,916	90,613	23,620	5,534	8,021	10,065	66,993	793,509	264,132	492,466	36,911	1,298	496	
2020.....	866,713	85,224	21,790	5,241	7,273	9,276	63,434	779,828	251,210	490,413	38,205	1,313	348	
2019.....	886,467	88,354	23,116	5,620	7,699	9,797	65,238	796,333	253,964	500,856	41,513	1,436	344	
2018.....	886,210	86,186	22,637	5,490	7,467	9,680	63,549	797,905	248,463	503,429	46,013	1,737	382	
2017.....	898,764	86,393	23,025	5,605	7,635	9,785	63,368	809,882	247,788	513,342	48,752	2,034	455	
2016.....	918,447	86,691	23,195	5,649	7,665	9,881	63,496	828,783	247,999	530,951	49,833	2,297	676	

¹Expressed in completed weeks based on the obstetric estimate of gestation; see Technical Notes in this report.

²Includes births to race and origin groups not shown separately, such as Hispanic single-race White, Hispanic single-race Black, and non-Hispanic multiple-race women, and births with origin not stated.

³Race and Hispanic origin are reported separately on birth certificates; people of Hispanic origin may be of any race. In this table, non-Hispanic women are classified by race. Race categories are consistent with the 1997 Office of Management and Budget standards; see Technical Notes. Single race is defined as only one race reported on the birth certificate.

⁴Includes all people of Hispanic origin of any race; see Technical Notes.

SOURCE: National Center for Health Statistics, National Vital Statistics System, Natality.

Table 21. Births, by gestational age and age and race and Hispanic origin of mother: United States, 2021

Race and Hispanic origin and age of mother	All births	Preterm ¹					Term ¹				Post term ¹ 42 and over	Not stated
		Total under 37	Early			Late 34–36	Total 37–41	Early 37–38	Full 39–40	Late 41		
			Under 28	28–31	32–33							
All races and origins ²	Number	Percent										Number
All ages	3,664,292	10.49	0.64	0.95	1.22	7.67	89.27	28.76	55.90	4.61	0.25	2,992
Under 15	1,877	14.81	1.77	2.09	1.77	9.17	85.03	31.17	49.41	4.45	0.16	13
15–19	146,973	10.62	0.86	0.96	1.27	7.53	89.22	28.48	55.94	4.80	0.16	132
20–24	648,484	10.07	0.69	0.93	1.13	7.31	89.72	28.73	56.30	4.69	0.21	515
25–29	1,023,989	9.82	0.60	0.87	1.13	7.22	89.94	28.23	56.89	4.81	0.24	884
30–34	1,115,055	10.10	0.59	0.90	1.19	7.43	89.64	28.07	56.56	5.01	0.26	843
35–39	592,179	11.78	0.67	1.07	1.40	8.64	87.95	30.00	54.02	3.92	0.27	476
40–44	126,332	14.49	0.83	1.38	1.75	10.52	85.25	33.09	50.02	2.14	0.26	118
45–54	9,403	20.60	1.19	2.64	2.70	14.07	79.12	36.12	41.63	1.37	0.28	11
Non-Hispanic, single race ³												
White, all ages	1,887,656	9.50	0.44	0.77	1.10	7.18	90.19	27.04	57.93	5.23	0.31	1,215
Under 15	449	12.16	1.58	1.35	2.03	7.21	87.61	32.66	48.87	6.08	0.23	5
15–19	50,203	10.54	0.75	0.85	1.31	7.62	89.30	27.23	57.53	4.54	0.17	43
20–24	286,140	9.51	0.51	0.83	1.08	7.10	90.21	27.56	57.73	4.93	0.28	160
25–29	532,001	8.99	0.41	0.73	1.04	6.80	90.71	26.74	58.64	5.34	0.29	355
30–34	633,212	9.01	0.39	0.71	1.05	6.85	90.66	26.21	58.65	5.80	0.33	374
35–39	321,036	10.41	0.43	0.82	1.22	7.94	89.23	27.86	56.60	4.77	0.36	226
40–44	60,388	12.54	0.52	1.07	1.47	9.49	87.07	30.81	53.41	2.85	0.38	50
45–54	4,227	18.79	0.78	2.30	2.32	13.40	80.83	34.39	44.76	1.68	0.38	2
Black, all ages	517,889	14.75	1.44	1.67	1.85	9.80	85.04	32.27	49.28	3.49	0.21	391
Under 15	506	17.10	2.98	3.58	1.59	8.95	82.70	31.81	48.71	2.19	0.20	3
15–19	31,231	12.99	1.39	1.44	1.70	8.46	86.85	31.16	51.73	3.96	0.16	28
20–24	117,698	13.22	1.35	1.51	1.61	8.75	86.63	31.39	51.55	3.69	0.15	84
25–29	148,309	13.98	1.37	1.51	1.71	9.39	85.79	31.53	50.60	3.67	0.22	120
30–34	130,788	15.28	1.47	1.77	1.91	10.14	84.48	32.20	48.67	3.61	0.24	99
35–39	70,073	17.25	1.58	1.99	2.22	11.45	82.51	34.40	45.28	2.84	0.24	48
40–44	17,802	19.54	1.76	2.33	2.63	12.82	80.23	37.81	40.72	1.70	0.23	8
45–54	1,482	26.94	2.43	3.51	4.12	16.88	72.65	39.50	31.94	1.22	0.41	1
Hispanic ⁴												
All ages	885,916	10.23	0.63	0.91	1.14	7.57	89.62	29.83	55.62	4.17	0.15	496
Under 15	770	14.60	0.91	1.56	1.43	10.69	85.40	30.64	50.20	4.56	*	3
15–19	55,263	9.34	0.65	0.82	0.99	6.88	90.50	28.10	56.99	5.41	0.16	43
20–24	199,773	9.01	0.56	0.74	0.94	6.77	90.85	28.77	57.19	4.88	0.14	121
25–29	256,844	9.29	0.55	0.80	1.00	6.94	90.55	29.16	56.94	4.45	0.15	148
30–34	220,530	10.51	0.63	0.94	1.21	7.73	89.33	30.04	55.27	4.02	0.15	101
35–39	120,329	12.68	0.78	1.20	1.48	9.22	87.19	32.07	52.28	2.83	0.13	59
40–44	30,464	15.32	0.92	1.51	1.81	11.08	84.57	34.74	48.46	1.37	0.10	17
45–54	1,943	21.30	1.44	2.68	2.89	14.29	78.60	36.82	40.74	1.03	0.10	4

See footnotes at end of table.

Table 21. Births, by gestational age and age and race and Hispanic origin of mother: United States, 2021—Con.

* Estimate does not meet National Center for Health Statistics standards of reliability.

¹Expressed in completed weeks based on the obstetric estimate of gestation; see Technical Notes in this report.

²Includes births to race and origin groups not shown separately, such as Hispanic single-race White, Hispanic single-race Black, and non-Hispanic multiple-race women, and births with origin not stated.

³Race and Hispanic origin are reported separately on birth certificates; people of Hispanic origin may be of any race. In this table, non-Hispanic women are classified by race. Race categories are consistent with the 1997 Office of Management and Budget standards; see Technical Notes. Single race is defined as only one race reported on the birth certificate.

⁴Includes all people of Hispanic origin of any race; see Technical Notes.

SOURCE: National Center for Health Statistics, National Vital Statistics System, Natality.

Table 22. Births, by birthweight: United States, 2010–2021, and by race and Hispanic origin of mother: United States, 2016–2021

Race and Hispanic origin of mother and year		Birthweight (grams) ¹													
		Low birthweight													
		All births	Very low birthweight					1,500–1,999	2,000–2,499	2,500–2,999	3,000–3,499	3,500–3,999	4,000–4,499	4,500–4,999	5,000 or more
Total under 2,500	Total under 1,500		Less than 500	500–999	1,000–1,499	Percent									
All races and origins ²	Number	Percent													Number
2021.....	3,664,292	8.52	1.38	0.13	0.51	0.75	1.68	5.46	19.25	38.85	25.93	6.47	0.87	0.10	3,331
2020.....	3,613,647	8.24	1.34	0.13	0.49	0.71	1.61	5.29	19.15	38.94	26.18	6.51	0.87	0.10	2,977
2019.....	3,747,540	8.31	1.38	0.14	0.50	0.74	1.63	5.30	19.07	39.07	26.09	6.49	0.87	0.10	3,668
2018.....	3,791,712	8.28	1.38	0.14	0.50	0.74	1.62	5.28	18.75	38.76	26.44	6.72	0.94	0.11	2,932
2017.....	3,855,500	8.28	1.41	0.14	0.52	0.74	1.63	5.25	18.72	38.76	26.44	6.75	0.95	0.11	3,002
2016.....	3,945,875	8.17	1.40	0.14	0.52	0.74	1.59	5.17	18.54	38.76	26.60	6.85	0.97	0.11	4,518
2015.....	3,978,497	8.07	1.40	0.15	0.52	0.73	1.58	5.09	18.36	38.84	26.73	6.90	0.98	0.12	3,621
2014.....	3,988,076	8.00	1.40	0.15	0.52	0.74	1.56	5.04	18.27	38.80	26.88	6.94	0.99	0.12	3,270
2013.....	3,932,181	8.02	1.41	0.15	0.53	0.73	1.56	5.05	18.22	38.93	26.85	6.86	0.99	0.11	4,452
2012.....	3,952,841	7.99	1.42	0.15	0.54	0.73	1.56	5.01	18.28	39.00	26.81	6.83	0.97	0.12	4,008
2011.....	3,953,590	8.10	1.44	0.15	0.54	0.75	1.58	5.08	18.44	39.13	26.56	6.71	0.95	0.11	4,570
2010.....	3,999,386	8.15	1.45	0.15	0.55	0.75	1.59	5.11	18.63	39.21	26.41	6.58	0.92	0.11	3,964
Non-Hispanic, single race ³															
White:															
2021.....	1,887,656	7.03	1.02	0.08	0.35	0.59	1.41	4.60	16.52	38.18	29.21	7.89	1.07	0.11	1,313
2020.....	1,843,432	6.84	0.99	0.08	0.34	0.56	1.35	4.50	16.37	38.18	29.46	7.96	1.07	0.12	1,144
2019.....	1,915,912	6.89	1.02	0.08	0.35	0.59	1.39	4.49	16.35	38.24	29.37	7.96	1.08	0.11	1,550
2018.....	1,956,413	6.91	1.02	0.09	0.34	0.58	1.38	4.52	16.01	37.80	29.74	8.25	1.16	0.12	1,259
2017.....	1,992,461	7.00	1.05	0.09	0.36	0.60	1.40	4.54	16.05	37.68	29.70	8.28	1.17	0.12	1,211
2016.....	2,056,332	6.97	1.07	0.09	0.37	0.61	1.39	4.51	15.88	37.59	29.82	8.39	1.21	0.12	2,212
Black:															
2021.....	517,889	14.66	2.91	0.32	1.15	1.44	2.91	8.84	26.08	37.38	17.74	3.58	0.49	0.06	580
2020.....	529,811	14.19	2.86	0.34	1.13	1.39	2.79	8.53	25.90	37.60	18.14	3.61	0.49	0.07	569
2019.....	548,075	14.15	2.94	0.36	1.15	1.43	2.79	8.43	25.75	37.96	18.01	3.59	0.47	0.06	688
2018.....	552,029	14.07	2.92	0.35	1.16	1.41	2.79	8.35	25.44	37.90	18.33	3.68	0.51	0.07	571
2017.....	560,715	13.89	2.95	0.36	1.18	1.41	2.72	8.22	25.44	37.96	18.37	3.76	0.51	0.07	642
2016.....	558,622	13.68	2.95	0.37	1.20	1.38	2.67	8.06	25.38	38.24	18.42	3.69	0.52	0.07	936
Hispanic ⁴															
2021.....	885,916	7.82	1.28	0.12	0.47	0.69	1.52	5.02	19.55	40.58	25.35	5.82	0.78	0.10	594
2020.....	866,713	7.40	1.19	0.12	0.45	0.63	1.43	4.77	19.41	40.63	25.74	5.92	0.79	0.11	436
2019.....	886,467	7.55	1.27	0.12	0.47	0.68	1.45	4.83	19.23	40.83	25.62	5.89	0.78	0.10	575
2018.....	886,210	7.49	1.24	0.12	0.46	0.66	1.43	4.81	19.01	40.64	25.90	6.02	0.83	0.11	381
2017.....	898,764	7.43	1.26	0.13	0.47	0.66	1.42	4.76	18.86	40.76	25.95	6.02	0.85	0.11	428
2016.....	918,447	7.32	1.24	0.13	0.46	0.65	1.41	4.68	18.76	40.79	26.06	6.10	0.85	0.12	556

See footnotes at end of table.

Table 22. Births, by birthweight: United States, 2010–2021, and by race and Hispanic origin of mother: United States, 2016–2021—Con.

Race and Hispanic origin of mother and year	Birthweight (grams) ¹														
	All births	Low birthweight													
		Total under 2,500	Total under 1,500	Very low birthweight		1,000– 1,499	1,500– 1,999	2,000– 2,499	2,500– 2,999	3,000– 3,499	3,500– 3,999	4,000– 4,499	4,500– 4,999	5,000 or more	Not stated
								Number							
All races and origins ²															
2021.....	3,664,292	311,932	50,551	4,629	18,512	27,410	61,585	199,796	704,766	1,422,368	949,323	236,987	31,964	3,621	3,331
2020.....	3,613,647	297,604	48,326	4,790	17,805	25,731	58,162	191,116	691,557	1,405,907	945,295	235,023	31,500	3,784	2,977
2019.....	3,747,540	311,245	51,733	5,189	18,839	27,705	61,205	198,307	713,859	1,462,658	976,609	243,153	32,694	3,654	3,668
2018.....	3,791,712	313,752	52,171	5,303	18,970	27,898	61,509	200,072	710,444	1,468,639	1,001,803	254,704	35,435	4,003	2,932
2017.....	3,855,500	318,873	54,135	5,470	19,979	28,686	62,605	202,133	721,165	1,493,081	1,018,613	260,042	36,493	4,231	3,002
2016.....	3,945,875	321,839	55,110	5,710	20,323	29,077	62,863	203,866	730,710	1,527,707	1,048,476	269,865	38,264	4,496	4,518
2015.....	3,978,497	320,869	55,592	5,863	20,689	29,040	62,862	202,415	729,673	1,544,024	1,062,456	274,404	38,796	4,654	3,621
2014.....	3,988,076	318,847	55,947	5,936	20,721	29,290	61,992	200,908	727,987	1,546,274	1,071,007	276,592	39,353	4,746	3,270
2013.....	3,932,181	315,099	55,458	5,945	20,866	28,647	61,238	198,403	715,764	1,529,258	1,054,767	269,594	38,834	4,413	4,452
2012.....	3,952,841	315,709	56,252	5,947	21,432	28,873	61,499	197,958	721,840	1,540,161	1,058,604	269,581	38,288	4,650	4,008
2011.....	3,953,590	319,711	56,754	5,942	21,289	29,523	62,504	200,453	728,201	1,545,355	1,048,902	265,040	37,475	4,336	4,570
2010.....	3,999,386	325,563	57,841	5,980	22,015	29,846	63,427	204,295	744,181	1,566,755	1,055,004	262,997	36,706	4,216	3,964
Non-Hispanic, single race ³															
White:															
2021.....	1,887,656	132,551	19,157	1,471	6,589	11,097	26,587	86,807	311,569	720,236	550,917	148,810	20,181	2,079	1,313
2020.....	1,843,432	126,034	18,182	1,521	6,263	10,398	24,881	82,971	301,674	703,331	542,775	146,626	19,719	2,129	1,144
2019.....	1,915,912	131,959	19,443	1,587	6,643	11,213	26,572	85,944	312,909	732,022	562,273	152,340	20,720	2,139	1,550
2018.....	1,956,413	135,185	19,872	1,721	6,719	11,432	26,964	88,349	313,105	739,031	581,499	161,395	22,645	2,294	1,259
2017.....	1,992,461	139,358	20,981	1,752	7,233	11,996	27,968	90,409	319,523	750,331	591,376	164,898	23,299	2,465	1,211
2016.....	2,056,332	143,254	21,979	1,888	7,565	12,526	28,578	92,697	326,279	772,165	612,641	172,434	24,781	2,566	2,212
Black:															
2021.....	517,889	75,837	15,036	1,639	5,958	7,439	15,068	45,733	134,892	193,393	91,772	18,543	2,540	332	580
2020.....	529,811	75,085	15,146	1,806	5,985	7,355	14,785	45,154	137,053	198,979	96,025	19,101	2,618	381	569
2019.....	548,075	77,475	16,089	1,954	6,315	7,820	15,261	46,125	140,963	207,795	98,585	19,641	2,593	335	688
2018.....	552,029	77,584	16,127	1,941	6,406	7,780	15,411	46,046	140,295	209,028	101,089	20,285	2,806	371	571
2017.....	560,715	77,815	16,544	2,024	6,597	7,923	15,228	46,043	142,459	212,599	102,878	21,065	2,854	403	642
2016.....	558,622	76,299	16,465	2,083	6,675	7,707	14,885	44,949	141,557	213,260	102,702	20,571	2,880	417	936
Hispanic ⁴															
2021.....	885,916	69,238	11,336	1,024	4,179	6,133	13,471	44,431	173,097	359,282	224,461	51,483	6,866	895	594
2020.....	866,713	64,092	10,344	998	3,890	5,456	12,394	41,354	168,111	351,994	223,005	51,290	6,857	928	436
2019.....	886,467	66,912	11,223	1,105	4,135	5,983	12,869	42,820	170,366	361,725	226,969	52,185	6,880	855	575
2018.....	886,210	66,310	11,006	1,084	4,040	5,882	12,706	42,598	168,418	359,966	229,450	53,359	7,358	968	381
2017.....	898,764	66,766	11,275	1,137	4,229	5,909	12,772	42,719	169,467	366,198	233,157	54,096	7,631	1,021	428
2016.....	918,447	67,210	11,378	1,175	4,237	5,966	12,910	42,922	172,171	374,434	239,210	55,983	7,770	1,113	556

¹Equivalents of gram weights in pounds and ounces are shown in the User Guide; see reference 10 in this report.

²Includes births to race and origin groups not shown separately, such as Hispanic single-race White, Hispanic single-race Black, and non-Hispanic multiple-race women, and births with origin not stated.

³Race and Hispanic origin are reported separately on birth certificates; people of Hispanic origin may be of any race. In this table, non-Hispanic women are classified by race. Race categories are consistent with the 1997 Office of Management and Budget standards; see Technical Notes. Single race is defined as only one race reported on the birth certificate.

⁴Includes all people of Hispanic origin of any race; see Technical Notes.

SOURCE: National Center for Health Statistics, National Vital Statistics System, Natality.

Table 23. Births, by birthweight and age and race and Hispanic origin of mother: United States, 2021

Race and Hispanic origin and age of mother		Birthweight (grams) ¹													
		Low birthweight													
		All births	Very low birthweight				1,000–1,499	1,500–1,999	2,000–2,499	2,500–2,999	3,000–3,499	3,500–3,999	4,000–4,499	4,500–4,999	5,000 or more
Total under 2,500	Total under 1,500		Less than 500	500–999											
All races and origins ²	Number	Percent													Number
All ages	3,664,292	8.52	1.38	0.13	0.51	0.75	1.68	5.46	19.25	38.85	25.93	6.47	0.87	0.10	3,331
Under 15	1,877	14.29	3.25	0.64	1.12	1.49	2.61	8.43	26.99	38.93	18.08	1.39	0.32	*	2
15–19	146,973	10.53	1.65	0.17	0.66	0.82	1.92	6.96	24.82	41.12	19.75	3.42	0.33	0.03	95
20–24	648,484	8.98	1.43	0.14	0.54	0.75	1.67	5.87	21.40	40.39	23.57	5.00	0.60	0.06	579
25–29	1,023,989	7.97	1.27	0.12	0.47	0.69	1.55	5.14	18.77	39.23	26.56	6.52	0.86	0.09	914
30–34	1,115,055	7.92	1.28	0.12	0.46	0.71	1.57	5.07	17.98	38.31	27.38	7.30	0.99	0.11	990
35–39	592,179	8.93	1.48	0.12	0.53	0.83	1.87	5.59	18.47	37.48	26.67	7.24	1.08	0.14	594
40–44	126,332	10.99	1.89	0.14	0.70	1.05	2.44	6.67	20.16	36.83	24.43	6.48	0.96	0.14	141
45–54	9,403	16.74	3.27	0.18	1.21	1.87	4.08	9.39	22.41	34.41	20.37	5.16	0.88	0.03	16
Non-Hispanic, single race ³															
White, all ages	1,887,656	7.03	1.02	0.08	0.35	0.59	1.41	4.60	16.52	38.18	29.21	7.89	1.07	0.11	1,313
Under 15	449	9.80	3.12	0.22	1.34	1.56	1.34	5.35	24.94	37.86	24.05	2.45	0.89	*	–
15–19	50,203	9.37	1.39	0.15	0.57	0.67	1.84	6.15	21.27	40.69	23.47	4.70	0.45	0.05	24
20–24	286,140	7.54	1.14	0.10	0.40	0.64	1.47	4.93	18.48	39.96	26.97	6.20	0.77	0.07	182
25–29	532,001	6.64	0.95	0.07	0.33	0.54	1.32	4.37	16.18	38.55	29.66	7.83	1.04	0.10	352
30–34	633,212	6.52	0.93	0.07	0.32	0.54	1.29	4.30	15.55	37.74	30.29	8.60	1.17	0.12	427
35–39	321,036	7.39	1.05	0.07	0.34	0.64	1.54	4.80	16.15	36.82	29.61	8.62	1.27	0.15	272
40–44	60,388	8.95	1.27	0.07	0.44	0.76	2.00	5.67	17.94	36.45	27.58	7.79	1.14	0.16	49
45–54	4,227	13.89	2.54	0.17	0.71	1.66	3.34	8.01	20.81	35.69	22.44	6.30	0.83	0.05	7
Black, all ages	517,889	14.66	2.91	0.32	1.15	1.44	2.91	8.84	26.08	37.38	17.74	3.58	0.49	0.06	580
Under 15	506	20.44	5.16	1.39	1.98	1.79	4.17	11.11	31.15	36.51	11.31	0.40	0.20	*	2
15–19	31,231	16.09	2.77	0.29	1.16	1.31	2.97	10.36	30.88	38.24	12.94	1.66	0.18	0.01	31
20–24	117,698	14.81	2.70	0.30	1.08	1.32	2.72	9.39	28.47	38.30	15.53	2.58	0.28	0.03	135
25–29	148,309	14.00	2.72	0.30	1.08	1.35	2.72	8.56	26.03	38.02	18.03	3.41	0.45	0.06	169
30–34	130,788	14.11	2.98	0.34	1.16	1.48	2.92	8.21	24.33	36.86	19.51	4.48	0.63	0.08	148
35–39	70,073	15.26	3.26	0.34	1.30	1.62	3.32	8.67	23.63	35.91	19.72	4.63	0.76	0.11	75
40–44	17,802	17.45	3.91	0.37	1.51	2.02	3.77	9.77	24.46	34.93	17.94	4.42	0.69	0.11	20
45–54	1,482	24.02	5.20	0.34	2.23	2.63	5.94	12.89	26.59	29.62	15.11	3.98	0.61	0.07	–
Hispanic ⁴															
All ages	885,916	7.82	1.28	0.12	0.47	0.69	1.52	5.02	19.55	40.58	25.35	5.82	0.78	0.10	594
Under 15	770	12.86	1.95	0.39	0.52	1.04	2.21	8.70	25.84	41.56	18.70	1.04	*	*	–
15–19	55,263	8.50	1.27	0.12	0.47	0.69	1.45	5.77	24.78	43.13	20.14	3.13	0.31	0.02	31
20–24	199,773	7.58	1.11	0.11	0.42	0.58	1.36	5.11	21.16	42.27	23.67	4.72	0.53	0.06	119
25–29	256,844	7.07	1.12	0.11	0.41	0.61	1.37	4.57	18.76	40.99	26.28	6.04	0.78	0.09	168
30–34	220,530	7.68	1.30	0.11	0.48	0.71	1.54	4.84	18.17	39.44	26.92	6.74	0.92	0.13	153
35–39	120,329	8.83	1.64	0.13	0.60	0.91	1.85	5.34	18.54	38.63	26.12	6.65	1.06	0.15	88
40–44	30,464	10.85	2.00	0.16	0.72	1.13	2.37	6.48	19.99	37.66	24.20	6.23	0.92	0.15	31
45–54	1,943	17.17	3.56	0.26	1.65	1.65	4.38	9.23	20.94	35.59	20.68	4.28	1.34	*	4

See footnotes at end of table.

Table 23. Births, by birthweight and age and race and Hispanic origin of mother: United States, 2021—Con.

* Estimate does not meet National Center for Health Statistics standards of reliability.

– Quantity zero.

¹Equivalents of gram weights in pounds and ounces are shown in the User Guide; see reference 10 in this report.

²Includes births to race and origin groups not shown separately, such as Hispanic single-race White, Hispanic single-race Black, and non-Hispanic multiple-race women, and births with origin not stated.

³Race and Hispanic origin are reported separately on birth certificates; people of Hispanic origin may be of any race. In this table, non-Hispanic women are classified by race. Race categories are consistent with the 1997 Office of Management and Budget standards; see Technical Notes. Single race is defined as only one race reported on the birth certificate.

⁴Includes all people of Hispanic origin of any race; see Technical Notes.

SOURCE: National Center for Health Statistics, National Vital Statistics System, Natality.

Table 24. Twin, triplet, and higher-order multiple births: United States, 2010–2021, and by race and Hispanic origin of mother: United States, 2016–2021

Race and Hispanic origin of mother and year	Total	Twins	Triplet and higher-order births ¹	Multiple birth rate	Twin birth rate	Triplet and higher-order birth rate ¹
						Rate per 100,000
		Number		Rate per 1,000		Rate per 100,000
All races and origins²						
2021.....	3,664,292	114,161	2,933	32.0	31.2	80.0
2020.....	3,613,647	112,437	2,875	31.9	31.1	79.6
2019.....	3,747,540	120,291	3,286	33.0	32.1	87.7
2018.....	3,791,712	123,536	3,525	33.5	32.6	93.0
2017.....	3,855,500	128,310	3,917	34.3	33.3	101.6
2016.....	3,945,875	131,723	4,003	34.4	33.4	101.4
2015.....	3,978,497	133,155	4,123	34.5	33.5	103.6
2014.....	3,988,076	135,336	4,526	35.1	33.9	113.5
2013.....	3,932,181	132,324	4,700	34.8	33.7	119.5
2012.....	3,952,841	131,024	4,919	34.4	33.1	124.4
2011.....	3,953,590	131,269	5,417	34.6	33.2	137.0
2010.....	3,999,386	132,562	5,503	34.5	33.1	137.6
Non-Hispanic, single race³						
White:						
2021.....	1,887,656	61,438	1,762	33.5	32.5	93.3
2020.....	1,843,432	60,082	1,664	33.5	32.6	90.3
2019.....	1,915,912	64,011	1,865	34.4	33.4	97.3
2018.....	1,956,413	67,203	1,996	35.4	34.4	102.0
2017.....	1,992,461	70,704	2,324	36.7	35.5	116.6
2016.....	2,056,332	73,425	2,502	36.9	35.7	121.7
Black:						
2021.....	517,889	21,047	424	41.5	40.6	81.9
2020.....	529,811	21,554	521	41.7	40.7	98.3
2019.....	548,075	22,397	589	41.9	40.9	107.5
2018.....	552,029	22,502	658	42.0	40.8	119.2
2017.....	560,715	22,982	671	42.2	41.0	119.7
2016.....	558,622	22,267	628	41.0	39.9	112.4
Hispanic⁴						
2021.....	885,916	21,401	554	24.8	24.2	62.5
2020.....	866,713	20,709	488	24.5	23.9	56.3
2019.....	886,467	21,811	590	25.3	24.6	66.6
2018.....	886,210	21,654	573	25.1	24.4	64.7
2017.....	898,764	22,041	614	25.2	24.5	68.3
2016.....	918,447	22,625	538	25.2	24.6	58.6

¹Triplet, quadruplet, quintuplet, and higher-order deliveries.²Includes births to race and origin groups not shown separately, such as Hispanic single-race White, Hispanic single-race Black, and non-Hispanic multiple-race women, and births with origin not stated.³Race and Hispanic origin are reported separately on birth certificates; people of Hispanic origin may be of any race. In this table, non-Hispanic women are classified by race. Race categories are consistent with the 1997 Office of Management and Budget standards; see Technical Notes in this report. Single race is defined as only one race reported on the birth certificate.⁴Includes all people of Hispanic origin of any race; see Technical Notes.

SOURCE: National Center for Health Statistics, National Vital Statistics System, Natality.

Table 25. Births, by plurality and age and race and Hispanic origin of mother: United States, 2021

Race and Hispanic origin and age of mother	Total	Singleton	Twins	Triplet and higher-order births ¹	Multiple birth rate		Triplet and higher-order birth rate ¹
					Twin birth rate		
	Number			Rate per 1,000		Rate per 100,000	
All races and origins²							
All ages	3,664,292	3,547,198	114,161	2,933	32.0	31.2	80.0
Under 15	1,877	1,858	19	–	10.1	10.1	0.0
15–19	146,973	144,787	2,177	9	14.9	14.8	6.1
15–17	35,542	35,084	455	3	12.9	12.8	8.4
18–19	111,431	109,703	1,722	6	15.5	15.5	5.4
20–24	648,484	632,852	15,411	221	24.1	23.8	34.1
25–29	1,023,989	993,079	30,176	734	30.2	29.5	71.7
30–34	1,115,055	1,075,543	38,349	1,163	35.4	34.4	104.3
35–39	592,179	568,854	22,731	594	39.4	38.4	100.3
40–44	126,332	121,616	4,550	166	37.3	36.0	131.4
45–54	9,403	8,609	748	46	84.4	79.5	489.2
Non-Hispanic, single race³							
White:							
All ages	1,887,656	1,824,456	61,438	1,762	33.5	32.5	93.3
Under 15	449	445	4	–	8.9	8.9	0.0
15–19	50,203	49,431	763	9	15.4	15.2	17.9
15–17	10,130	9,997	130	3	13.1	12.8	29.6
18–19	40,073	39,434	633	6	15.9	15.8	15.0
20–24	286,140	279,429	6,588	123	23.5	23.0	43.0
25–29	532,001	515,867	15,686	448	30.3	29.5	84.2
30–34	633,212	609,872	22,604	736	36.9	35.7	116.2
35–39	321,036	307,477	13,194	365	42.2	41.1	113.7
40–44	60,388	58,032	2,282	74	39.0	37.8	122.5
45–54	4,227	3,903	317	7	76.7	75.0	165.6
Black:							
All ages	517,889	496,418	21,047	424	41.5	40.6	81.9
Under 15	506	499	7	–	13.8	13.8	0.0
15–19	31,231	30,586	645	–	20.7	20.7	0.0
15–17	7,995	7,870	125	–	15.6	15.6	0.0
18–19	23,236	22,716	520	–	22.4	22.4	0.0
20–24	117,698	113,628	4,032	38	34.6	34.3	32.3
25–29	148,309	141,880	6,321	108	43.3	42.6	72.8
30–34	130,788	124,643	5,992	153	47.0	45.8	117.0
35–39	70,073	66,811	3,184	78	46.6	45.4	111.3
40–44	17,802	17,052	720	30	42.1	40.4	168.5
45–54	1,482	1,319	146	17	110.0	98.5	1,147.1
Hispanic⁴							
All ages	885,916	863,961	21,401	554	24.8	24.2	62.5
Under 15	770	762	8	–	10.4	10.4	0.0
15–19	55,263	54,612	651	–	11.8	11.8	0.0
15–17	14,794	14,621	173	–	11.7	11.7	0.0
18–19	40,469	39,991	478	–	11.8	11.8	0.0
20–24	199,773	196,000	3,728	45	18.9	18.7	22.5
25–29	256,844	250,763	5,937	144	23.7	23.1	56.1
30–34	220,530	214,166	6,170	194	28.9	28.0	88.0
35–39	120,329	116,407	3,814	108	32.6	31.7	89.8
40–44	30,464	29,486	934	44	32.1	30.7	144.4
45–54	1,943	1,765	159	19	91.6	81.8	977.9

– Quantity zero.

0.0 equals zero events in the numerator or percentage of less than 0.05.

¹Triplet, quadruplet, quintuplet, and higher-order deliveries.²Includes births to race and origin groups not shown separately, such as Hispanic single-race White, Hispanic single-race Black, and non-Hispanic multiple-race women, and births with origin not stated.³Race and Hispanic origin are reported separately on birth certificates; people of Hispanic origin may be of any race. In this table, non-Hispanic women are classified by race. Race categories are consistent with the 1997 Office of Management and Budget standards; see Technical Notes in this report. Single race is defined as only one race reported on the birth certificate.⁴Includes all people of Hispanic origin of any race.

SOURCE: National Center for Health Statistics, National Vital Statistics System, Natality.

Technical Notes

Data source

Data shown in this report for 2021 are based on 100% of the birth certificates filed in all states and the District of Columbia (D.C.). The data are provided to the National Center for Health Statistics (NCHS) through the Vital Statistics Cooperative Program. Information on the percentage of records with missing information for maternal and infant characteristics included in this report is shown by state in the "User Guide to the 2021 Natality Public Use File" (10); methodological and measurement information for these characteristics is also available in the 2021 User Guide.

2003 revision of U.S. Standard Certificate of Live Birth

Data for 2016–2021 presented in this report are based on the 2003 revision of the U.S. Standard Certificate of Live Birth; data for 2010–2015 are based on both the 1989 and the 2003 birth certificate revisions. The 2003 revision is described in detail elsewhere (22).

Age of mother

Age of mother is computed in most cases from the mother's and infant's dates of birth as reported on the birth certificate. Since 2007, age of mother has been imputed for ages 8 and under and 65 and over. Mothers aged 9 are recoded as aged 10. A review and verification of unedited data for several years including 2007 showed that most births reported as occurring to women aged 50 and over were to women aged 50–54. In this report, the final age group shown in the tables (45–49, 45–54, or 50–54) includes births to mothers up to age 64. For historical information on mother's age, see the 2021 User Guide (10).

Marital status

Due to state statutory restrictions, beginning in 2017, California no longer provides record-level data on the marital status of the mother for births occurring in, or to residents of, the state. Instead of record-level data, California provides counts of births by marital status category (married, unmarried, and unknown) by age and race and Hispanic origin of the mother according to the age and race and Hispanic-origin categories shown in this report to NCHS. For consistency with procedures for handling missing information for other jurisdictions, California's counts of birth by marital status were redistributed (proportionately) to the same maternal age, race, and marital status subgroups in the data set to obtain the national estimates by marital status. This approach is consistent with hot-deck procedures used for non-California records to impute for missing age, race, and marital status based on records for which these characteristics are known.

Hispanic origin and race

Hispanic origin

Hispanic origin and race are reported separately on the birth certificate. Data are shown in most cases for five specified Hispanic groups: Mexican, Puerto Rican, Cuban, Dominican, Central and South American, and Other and unknown Hispanic. Before 2018, data for the Dominican subgroup had been included in the category "Other and unknown Hispanic." In tabulations of birth data by race and Hispanic origin, data for people of Hispanic origin are not further classified by race because most births to Hispanic women are reported as White.

Items asking for the Hispanic origin of the mother (and the father) have been included on the birth certificates of all states, D.C., U.S. Virgin Islands, and Guam since 1993, and on the birth certificates of Puerto Rico starting in 2005 and Commonwealth of the Northern Marianas starting in 2010 (10,13). American Samoa does not collect information on Hispanic origin.

The Hispanic-origin question on the 2003 revision of the birth certificate asks respondents to select only one response. Occasionally, however, more than one Hispanic-origin response is given (that is, a specified Hispanic group [Mexican, Puerto Rican, Cuban, Dominican, or Central and South American] in combination with one or more other specified Hispanic group). From 2003 to 2012, respondents who selected more than one Hispanic origin on the birth certificate were classified as "Other Hispanic." Beginning with the 2013 data year, respondents who select more than one Hispanic origin are randomly assigned to a single Hispanic origin. This change was implemented to be consistent with the coding methods of the American Community Survey (23), on which the rates for the specified Hispanic groups from 2020 are based (see "Population estimates for specific Hispanic groups").

Race

This report presents data on race and Hispanic origin based on the 1997 Office of Management and Budget (OMB) standards (12). The 2003 revision of the U.S. Standard Certificate of Live Birth allows the reporting of the five race categories either alone (single race) or in combination (more than one race or multiple races) for each parent (11), according to the revised standards issued by OMB in 1997 (12). The five categories for race specified in the revised standards are: American Indian or Alaska Native, Asian, Black or African American, Native Hawaiian or Other Pacific Islander, and White; see the 2021 User Guide (10).

Beginning in 2016, all states and D.C., in addition to Puerto Rico, U.S. Virgin Islands, Guam, and Northern Marianas, were reporting race according to the 1997 revised OMB standards, with 2.6% of mothers in the United States reporting more than one race in 2021 (10). Before 2016, the multiple-race reporting states varied widely, increasing from 6 states in 2003 to the 50 states and D.C. and all territories except American Samoa in 2016.

Gestational age

Beginning with the 2014 data year, NCHS transitioned to a new standard for estimating the gestational age of the newborn. The new measure—the obstetric estimate of gestation at delivery (OE)—replaces the measure based on the date of the last normal menses (LMP) (20). National data based on the OE are available only from data year 2007 forward. Gestational age estimates differ somewhat between the OE- and LMP-based measures. Accordingly, gestational age data in this report are based on the OE. Information and discussion of the reasons for the change, and a detailed comparison of the two measures, are presented elsewhere (20).

Computations of percentages, percent distributions, and means

For information and discussion on computations of percentages, percent distributions, and means, see the 2021 User Guide (10).

Population denominators

The birth and fertility rates for 2021 shown in [Tables 1, 2, 5, 8, 10, 11](#), and [I–2](#) are based on populations estimated from the 2020 census as of July 1, 2021. These populations are shown in the 2021 User Guide (10). The population estimates have been provided by the U.S. Census Bureau (24) and are based on the 2020 census counts by age, sex, and race. The race categories are consistent with the revised 1997 OMB standards (12).

The birth and fertility rates by state shown in [Table 8](#) are based on state-level population counts, which are based on the 2020 census provided by the U.S. Census Bureau (24). Birth and fertility rates for the territories except Puerto Rico shown in [Table 8](#) are based on population estimates provided by the U.S. Census Bureau's International Data Base (25). Rates for Puerto Rico are based on population estimates from the 2020 census as of July 1, 2021, and are provided by the U.S. Census Bureau (26).

Rates by state and territory shown in this report may differ from rates computed based on other population estimates; rates for smaller population subgroups, such as those for teen mothers, may be particularly affected by differences in population estimates. Birth and fertility rates by month shown in [Table I–2](#) are based on monthly population estimates for 2021, which are also based on 2020 census estimates. For 2021, rates for unmarried women shown in [Tables 10](#) and [11](#) are based on distributions of the population by marital status averaged over a 2-year period for 2020–2021. These distributions were reported by the U.S. Census Bureau in the March Current Population Survey for each year (27,28) and have been adjusted to July 1, 2021 (2020 census), population levels (24) by NCHS' Division of Vital Statistics (29).

The population distributions by marital status are based on a 2-year average (of the current and previous year) from 2020 to 2021 (13). For earlier years, rates for unmarried women are based on distributions of the population by marital status averaged over a 3-year period (29).

Birth and fertility rates for 2020 have been revised and may differ from those published in “Births: Final Data for 2020” and elsewhere (1,15). Previously published birth and fertility rates for 2020 were based on postcensal population estimates derived from the 2010 census. The revised rates shown here are based on revised population estimates consistent with the 2020 census, as of April 1. When the intercensal population estimates for 2011–2019, based on the April 1, 2000 census, become available, revised birth and fertility rates for 2011–2019 will be presented in a separate report.

Population estimates for specific Hispanic groups

The 2021 population estimates for the specific Hispanic population groups were not available when this report was being prepared (30). Accordingly, birth and fertility rates for these groups for 2021 are not shown in this report. Once available, birth and fertility rates for the specific Hispanic population groups will be published.

Computation of rates and percentages

An asterisk (*) in the tables indicates that a rate or percentage does not meet NCHS standards of reliability. For population-based rates, an asterisk is shown in place of a rate based on fewer than 20 births in the numerator. For percentages, NCHS has adopted new standards and implemented them for natality data beginning with the 2017 data year. The new standard is based on denominator size and on the absolute or relative widths of the confidence interval of the proportion or percentage calculated using the Clopper–Pearson method. This compares with the previous standard for which, similar to the standard for population-based rates, an asterisk was used for percentages based on fewer than 20 births in the numerator. For detailed information on the 2017 standard, see the 2021 User Guide and “National Center for Health Statistics Data Presentation Standards for Proportions” (10,31).

Random variation and significance testing for natality data

For information and discussion on random variation and significance testing for natality data, see the 2010 User Guide (32).

For information and discussion on random variation and significance testing for birth and fertility rates for Mexican, Puerto Rican, Cuban, Dominican, Central and South American, and other Hispanic populations based on American Community Survey population estimates, see the 2021 User Guide (10).

Definitions of medical terms

For definitions and discussion of medical and health items presented in this report, see “Guide to Completing the Facility Worksheets for the Certificate of Live Birth and Report of Fetal Death” (33).

**U.S. DEPARTMENT OF
HEALTH & HUMAN SERVICES**

Centers for Disease Control and Prevention
National Center for Health Statistics
3311 Toledo Road, Room 4551
Hyattsville, MD 20782-2064

FIRST CLASS MAIL
POSTAGE & FEES PAID
CDC/NCHS
PERMIT NO. G-284

OFFICIAL BUSINESS
PENALTY FOR PRIVATE USE, \$300

For more NCHS NVSRs, visit:
<https://www.cdc.gov/nchs/products/nvsr.htm>.



National Vital Statistics Reports, Vol. 72, No. 1, January 31, 2023

Contents

Abstract 1
Introduction 2
 2003 revision of U.S. Standard Certificate of Live Birth 2
Methods 2
Demographic Characteristics
 (Tables 1–12) 3
 Births and birth rates 3
 Age of mother 3
 Live-birth order 4
 Total fertility rate 4
 Births and birth rates by state 5
 Birth rates for teenagers by state 5
 Births to unmarried women 5
Cigarette Smoking Before and During Pregnancy (Tables 13–15) 5
Medical and Health Services Utilization and Source
 of Payment for the Delivery (Tables 13–19) 6
 Use and timing of prenatal care 6
 Method of delivery 6
 Source of payment for the delivery 6
Infant Health Characteristics (Tables 20–25) 7
 Period of gestation 7
 Birthweight 7
 Multiple births 8

References 9
List of Detailed Tables 11
List of Internet Tables 11
Technical Notes 49

Acknowledgments

This report was prepared in the Division of Vital Statistics (DVS) under the general direction of DVS Director Steven Schwartz; Isabelle Horon, Chief, Reproductive Statistics Branch (RSB); and Joyce Martin, Team Leader, RSB Birth Team. Rajesh Virkar, Chief of the Systems, Programming, and Statistical Resources Branch (SPSRB), Steve J. Steimel (SPSRB), Annie S. Liu (SPSRB), and Jasmine N. Mickens provided computer programming support and statistical tables. Steve J. Steimel and Annie S. Liu also prepared the natality file. The Data Acquisition and Evaluation Branch staff of DVS evaluated the quality of and acceptance procedures for the state data files on which this report is based.

This report was edited and produced by NCHS Office of Information Services, Information Design and Publishing Staff: Jen Hurlburt edited the report, and typesetting and graphics were produced by Michael W. Jones (contractor).

Suggested citation

Osterman MJK, Hamilton BE, Martin JA, Driscoll AK, Valenzuela CP. Births: Final data for 2021. National Vital Statistics Reports; vol 72, no 1. Hyattsville, MD: National Center for Health Statistics. 2023. DOI: <https://dx.doi.org/10.15620/cdc:122047>.

Copyright information

All material appearing in this report is in the public domain and may be reproduced or copied without permission; citation as to source, however, is appreciated.

National Center for Health Statistics

Brian C. Moyer, Ph.D., *Director*
Amy M. Branum, Ph.D., *Associate Director for Science*

Division of Vital Statistics

Steven Schwartz, Ph.D., *Director*
Andrés A. Berruti, Ph.D., M.A., *Associate Director for Science*