



*Celebrating* **100** YEARS  
of Research for the *Growing World*

# BARC History: Bureau of Plant Industry

**Rob Griesbach**

**From 1862 to 1900, the primary mission of the USDA was to acquire & diffuse information.**

**Several new Divisions in plant sciences were established to facility the mission.**

**1868**

**Seed Division**

**Botany Division**

**1871**

**Microscopy Division**

**1876**

**Gardens & Grounds Division**

**1877**

**Forestry Division**

**1886**

**Pomology Division**

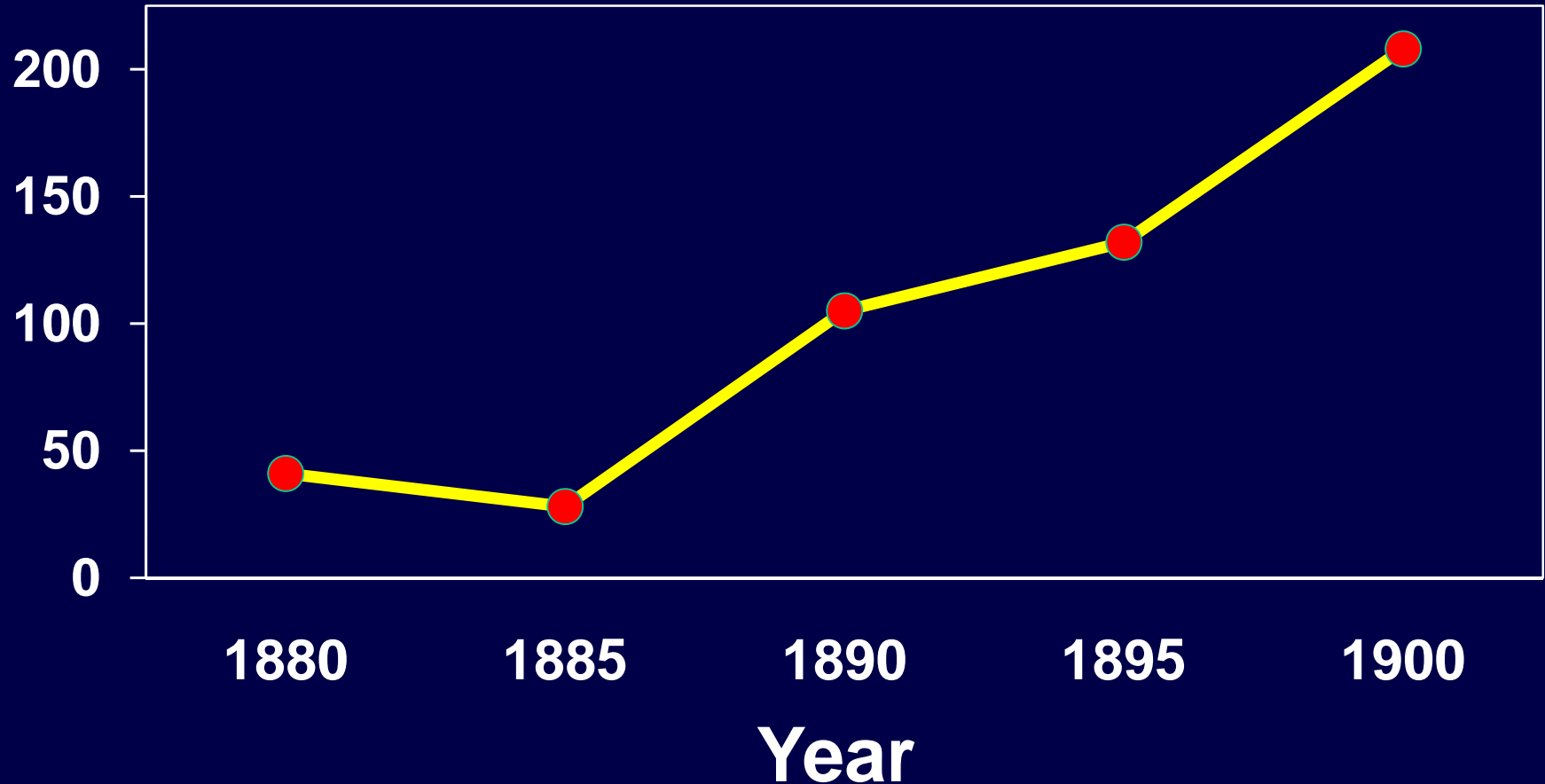
**Vegetable Pathology Division**

**1895**

**Agrostology Division**

**Vegetable Physiology & Pathology Division**

**With an expanded program,  
the number of employees involved  
in plant related activities grew**



# 1893 Researchers in Vegetable\* Physiology & Pathology Division



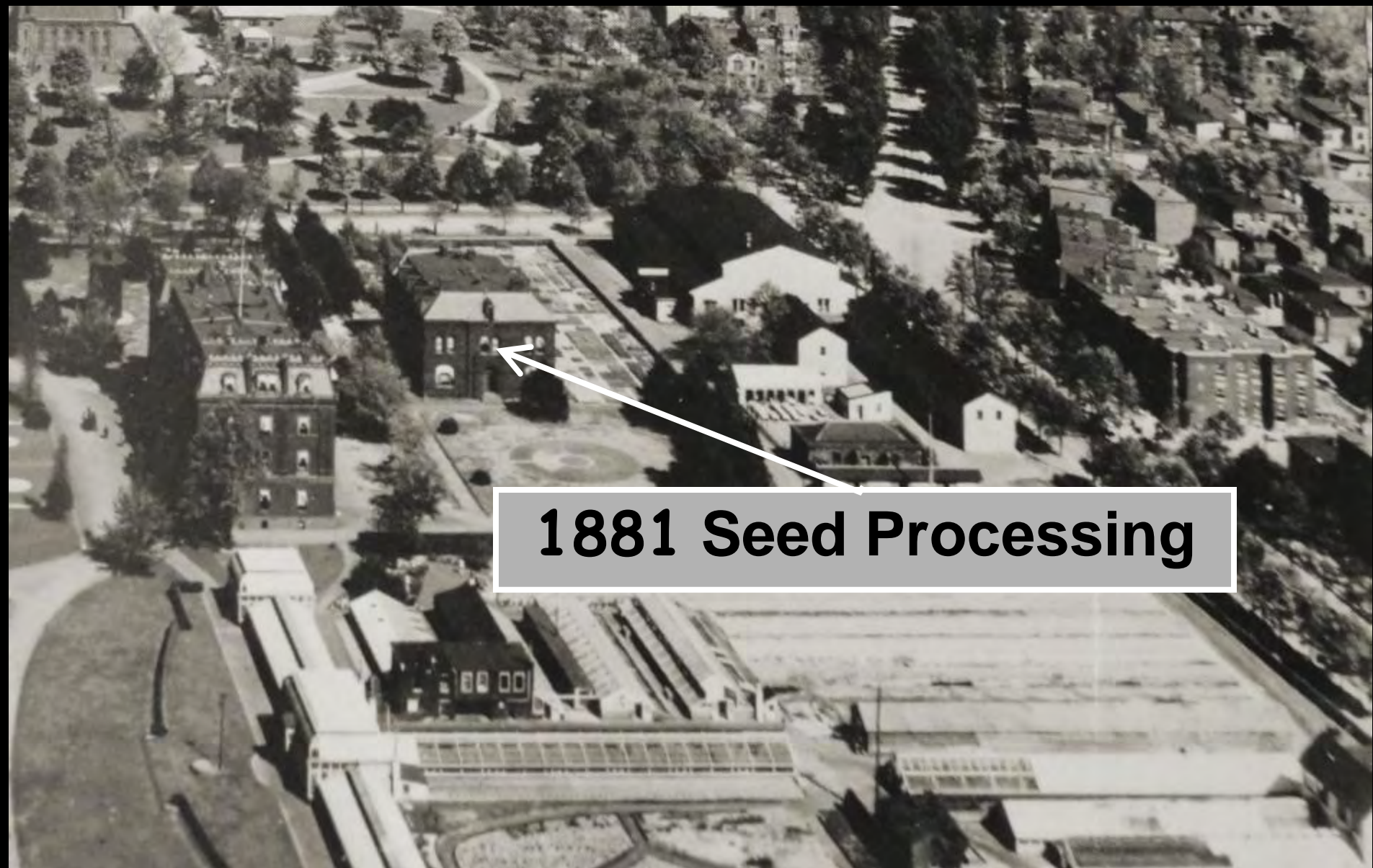
\* 'vegetable' meant 'plant'

**Program expansion  
also required  
facility expansion**

An aerial photograph of a city, likely Madison, Wisconsin, showing the State Capitol building in the upper left. A callout box with the text "1879 Stables" and an arrow points to a large, rectangular building complex in the lower right quadrant of the image. The surrounding area is densely wooded and contains various other buildings and structures.

**1879 Stables**





**1881 Seed Processing**







**1897 Library  
Fireproof**



An aerial photograph of a university campus. In the center, a large, light-colored rectangular area, possibly a sports field or a large open lot, is visible. To the left of this area, there are several long, low buildings. A white arrow points from a grey callout box to a small, dark building within this group. The rest of the campus is filled with various buildings, trees, and walkways. The overall scene is a dense urban environment with green spaces.

**1889 Laboratory Facilities**

1908





An aerial photograph of a city, likely from the late 19th century, showing a mix of residential buildings and industrial structures. A prominent feature is a large, long, rectangular building with a glass roof, identified as a greenhouse. A white arrow points from a text box to this building. The surrounding area includes various other buildings, streets, and green spaces.

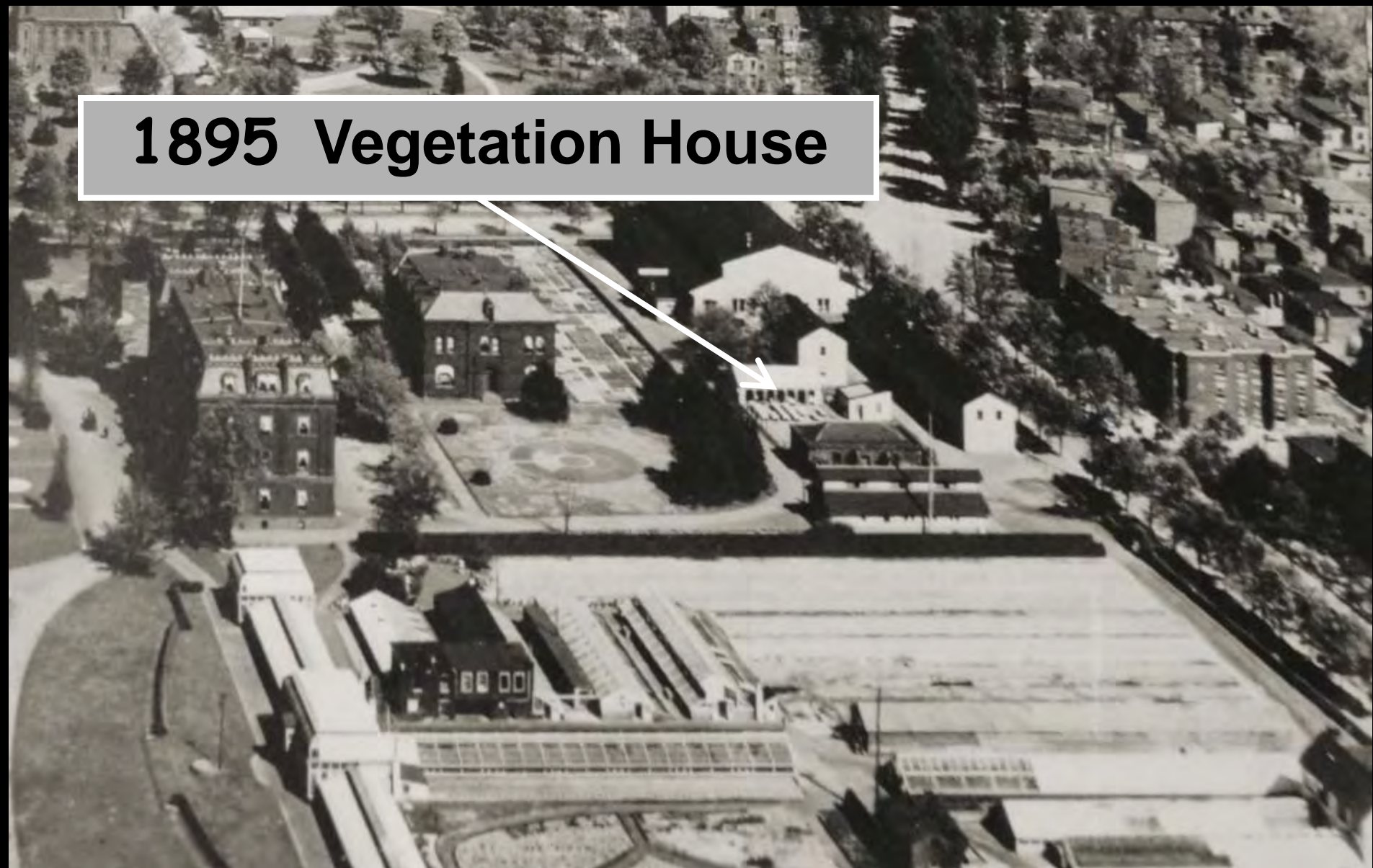
**1883 Greenhouse**







# 1895 Vegetation House





**Additional facilities  
were rented for  
offices & laboratories**

**Merton Waite's office/lab in Agriculture Building attic**





Pomology

Botany

Seed

Garden & Grounds

Forestry

Microscopy

Vegetable Physiology  
& Pathology

**Agriculture Building**

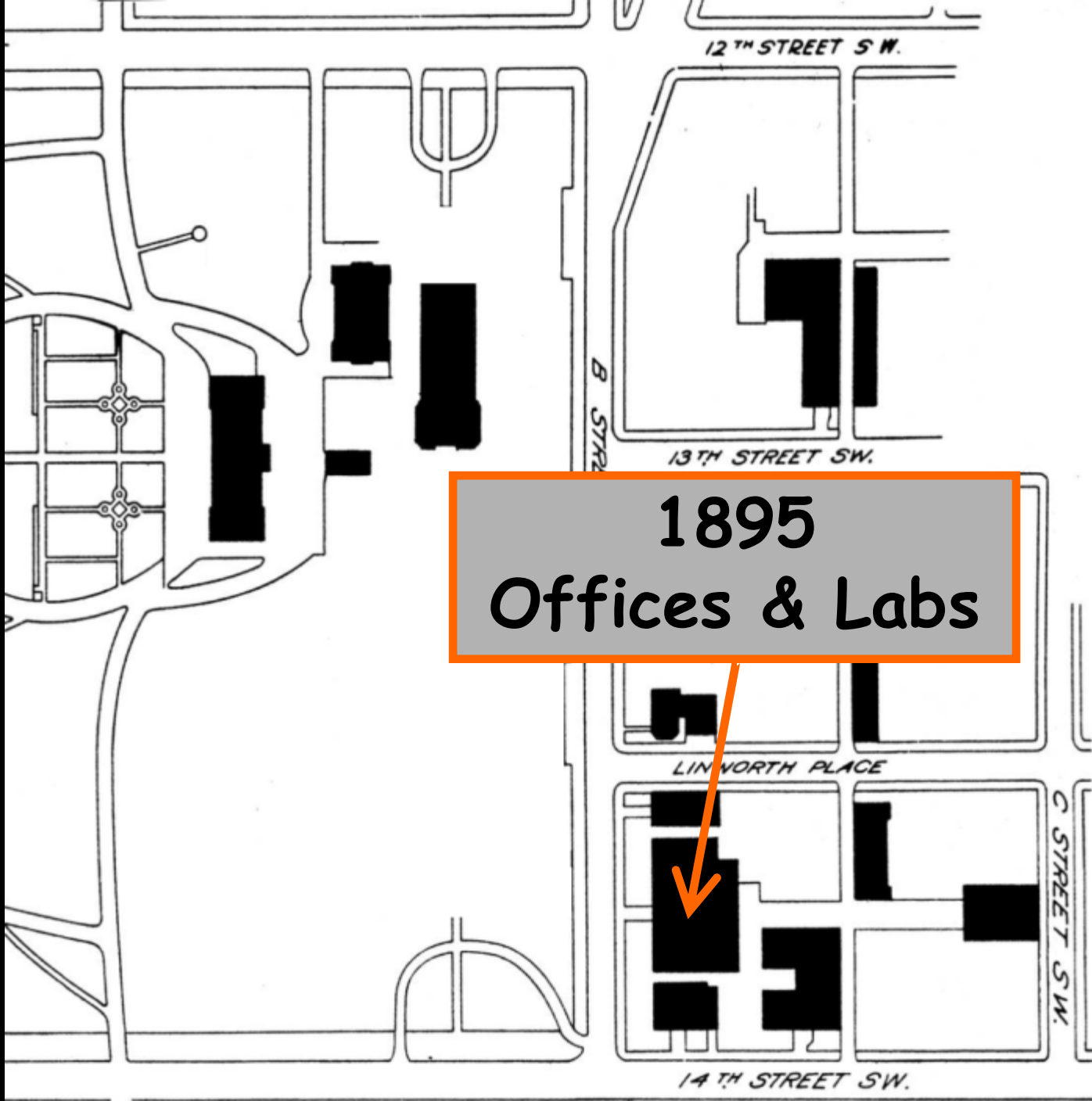
**1921 17<sup>th</sup> Street**

**308 2<sup>th</sup> Street**

**1603 3<sup>rd</sup> Street**

**1303 P Street**

**238 Massachusetts Avenue**



12<sup>TH</sup> STREET S W.

B STREET SW

13<sup>TH</sup> STREET SW.

**1895  
Offices & Labs**

LINWORTH PLACE

C STREET SW.

14<sup>TH</sup> STREET SW.





1895



U.S. DEPARTMENT OF AGRICULTURE.

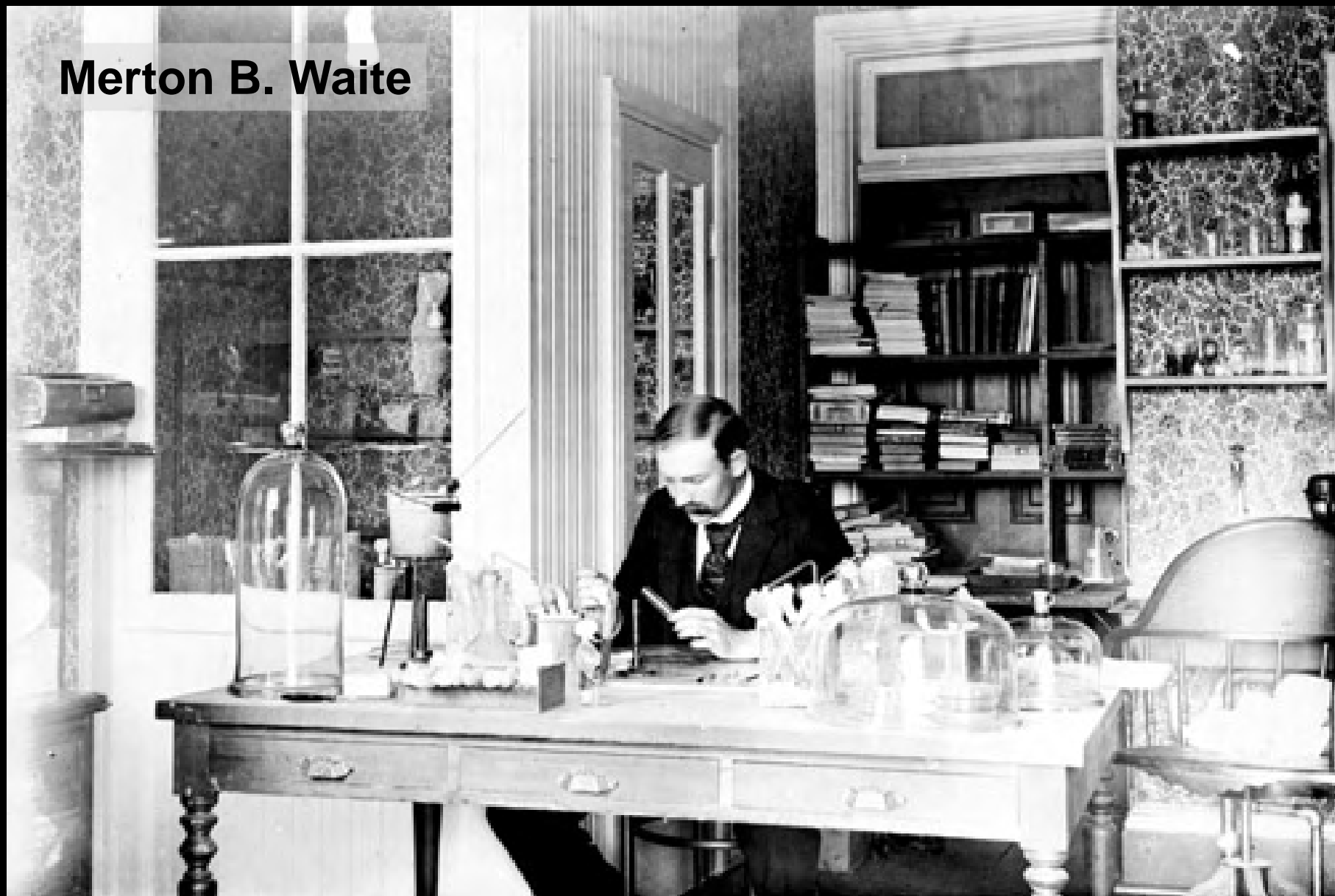
VEGETABLE PHYSIOLOGY & PATHOLOGY.

EXHIBIT SECTION

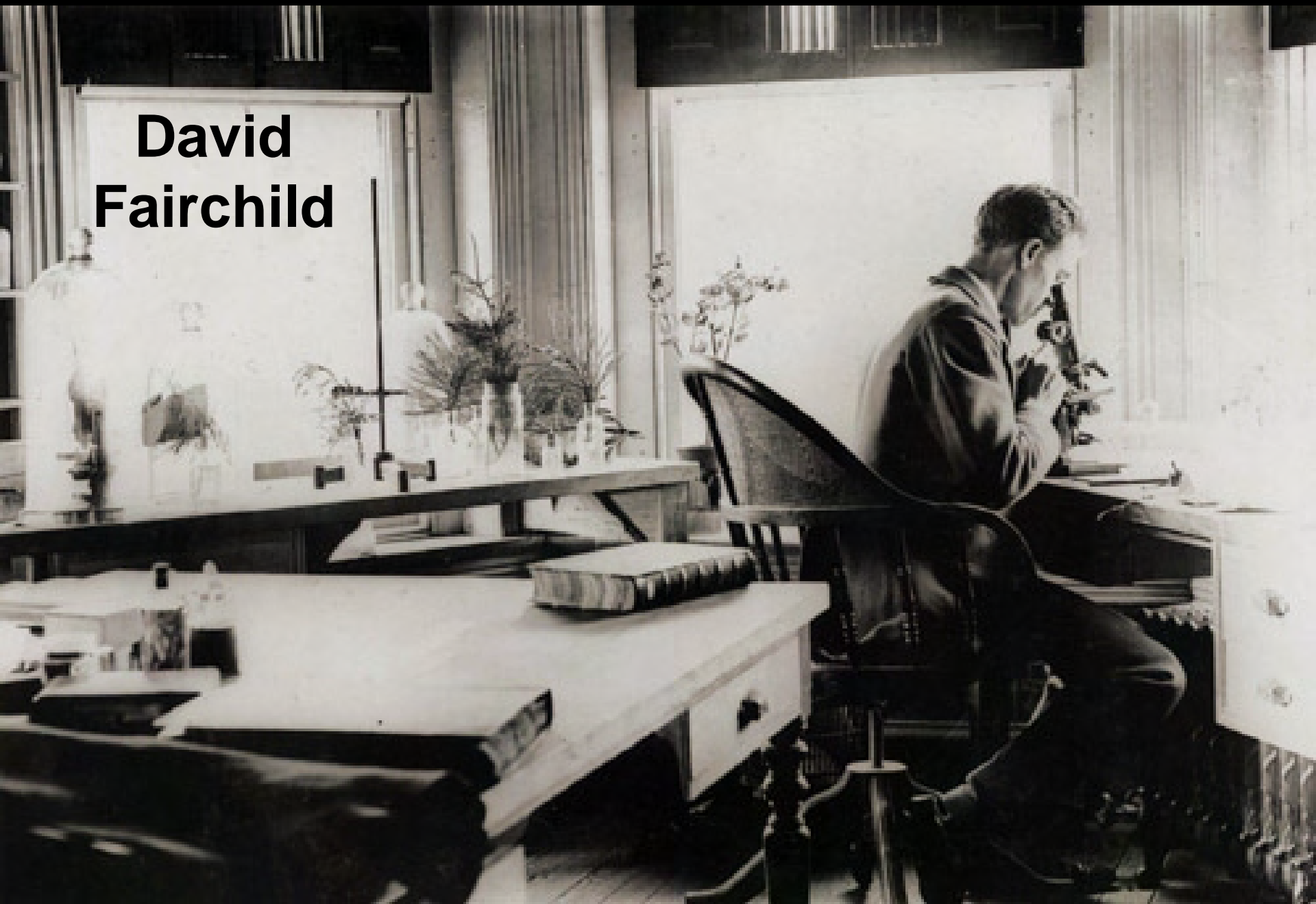




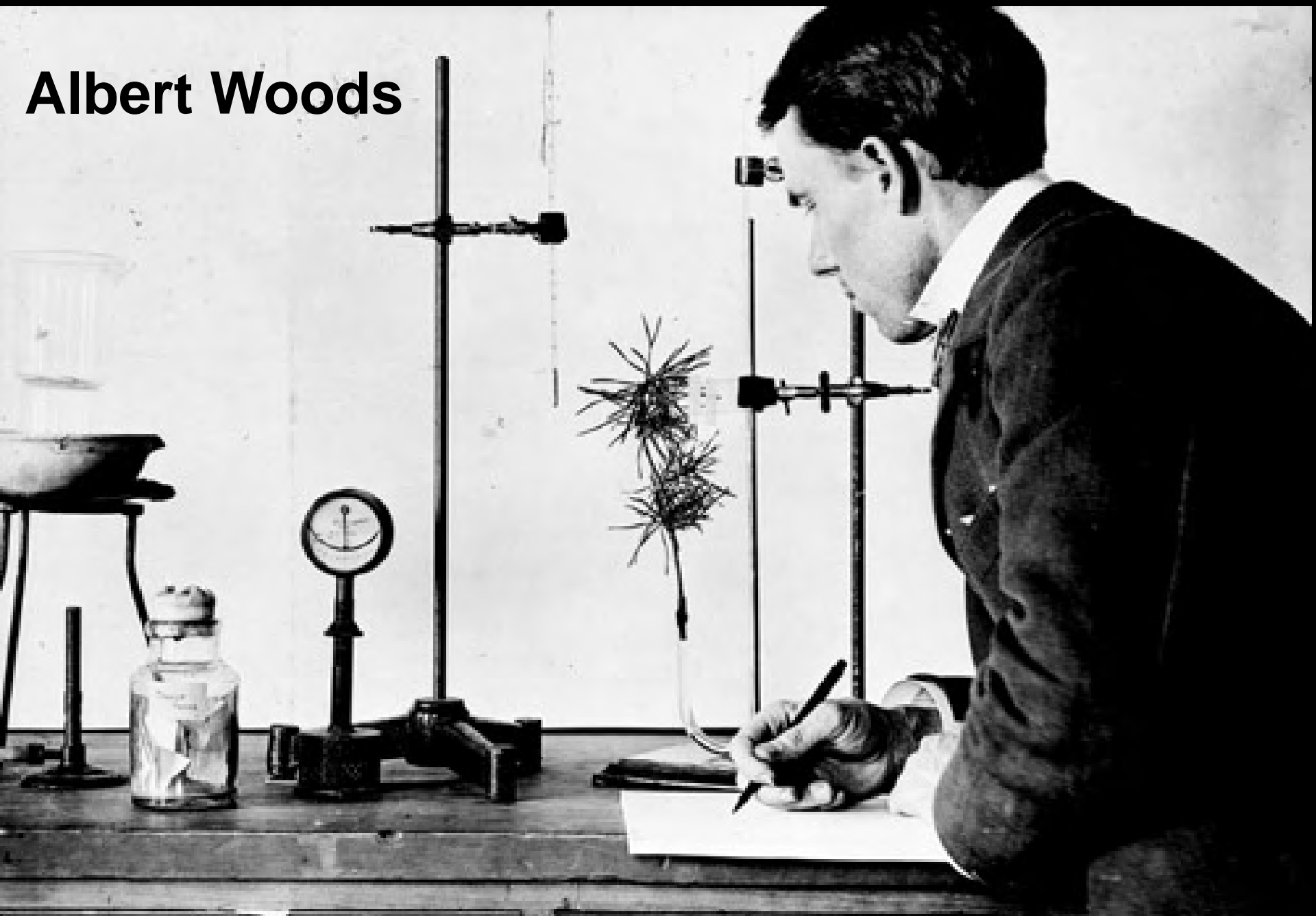
**Merton B. Waite**



# David Fairchild



# Albert Woods



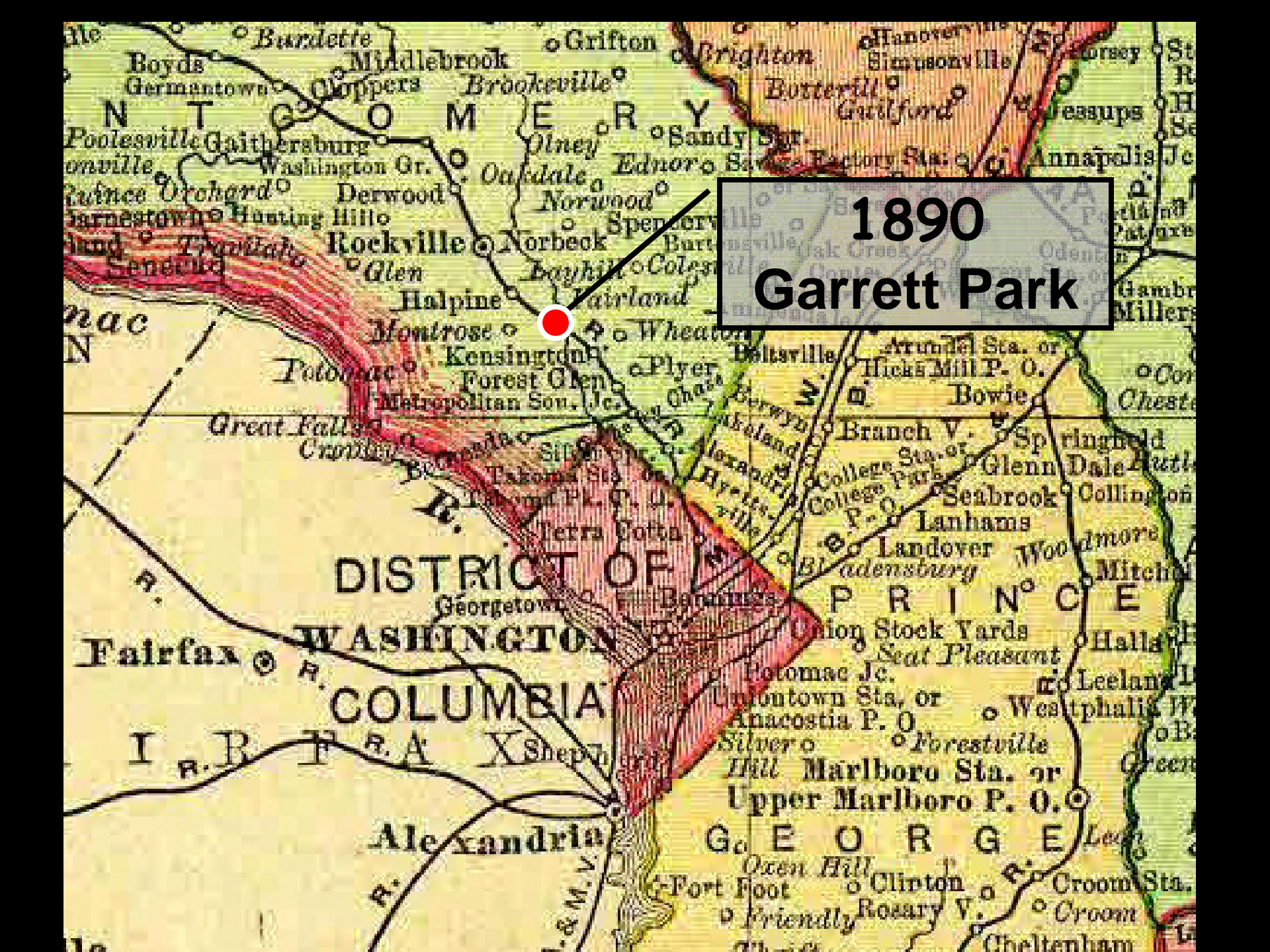
**Additional land  
needed for  
research**

**In 1890, Chief of Vegetable Physiology & Pathology began using his home in Garret Park as research station.**

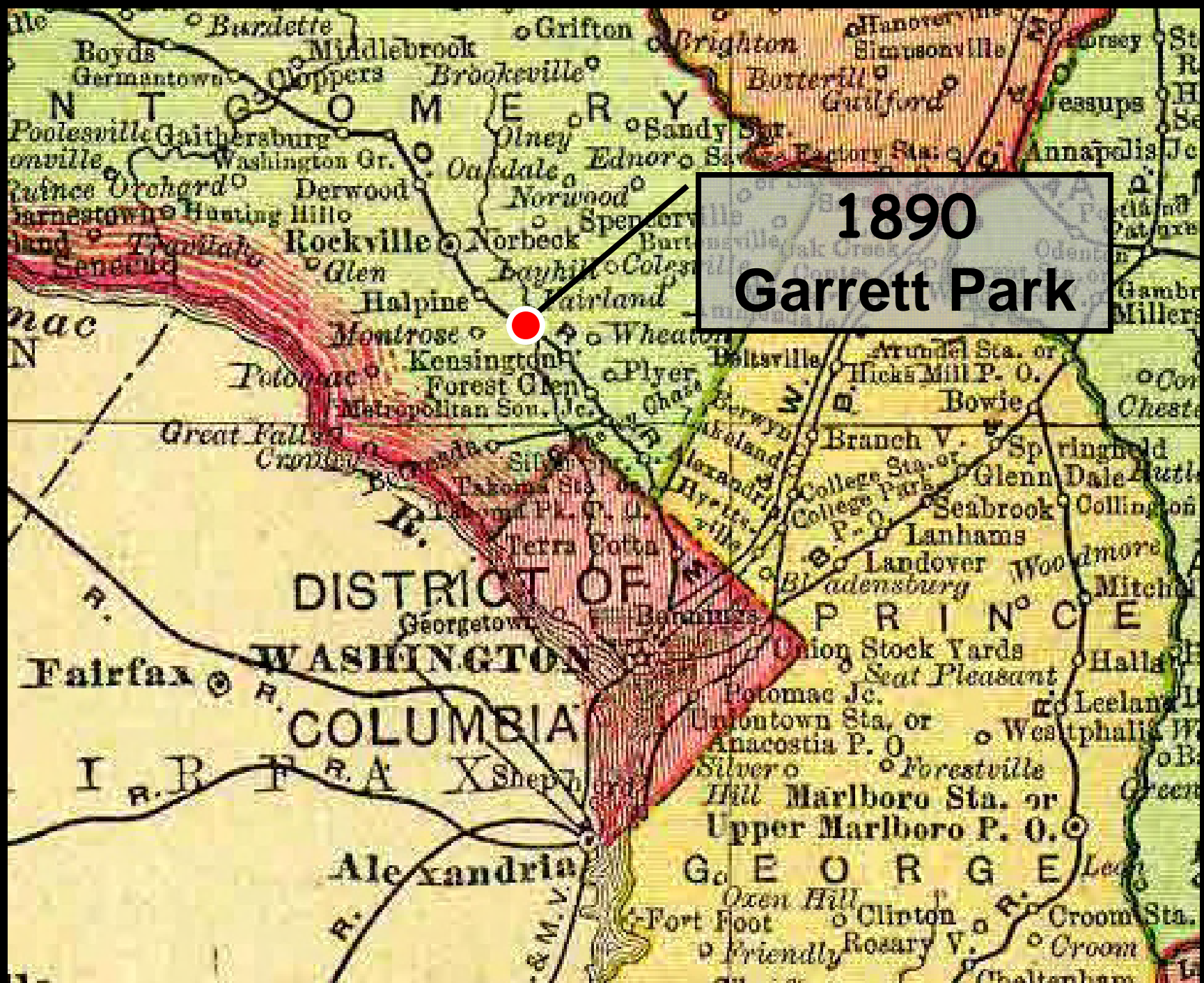
**Beverly Galloway**







**1890  
Garrett Park**



# Mark Carleton breeding wheat at Garrett Park



# Lettuce fertilizer experiments at Garrett Park

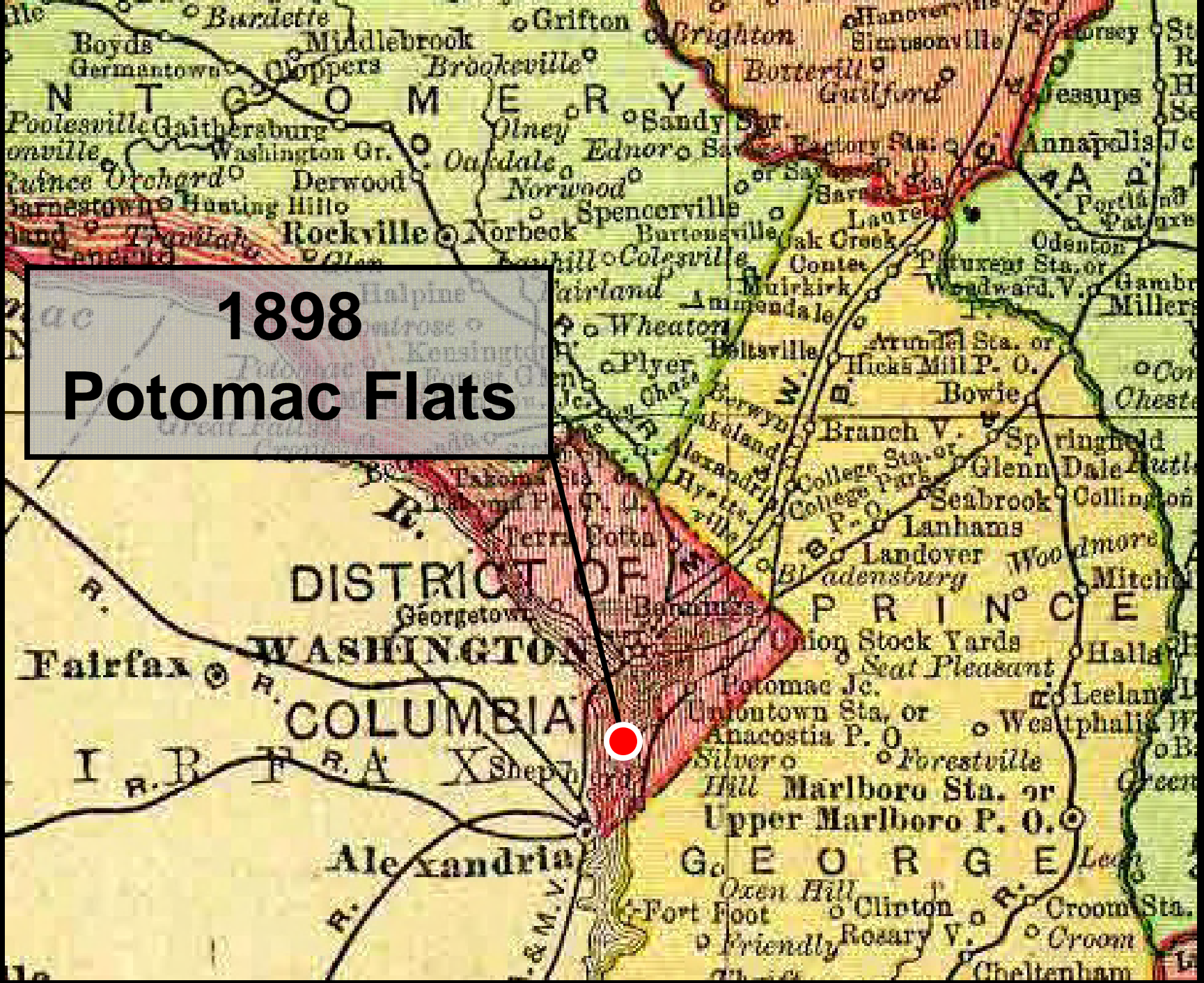
1893




**In 1898, Congress  
assigns public land  
on Potomac Flats  
to Vegetable  
Physiology &  
Pathology Division**



**1898**  
**Potomac Flats**



An aerial black and white photograph showing a large golf course situated on a peninsula or along a riverbank. The golf course is the central focus, with its fairways, greens, and sand traps clearly visible. A dense line of trees borders the course. In the background, a city is visible, with a prominent white tower. A white arrow points from the text box to a building in the city. To the right of the golf course, there is a large, multi-story building complex, possibly a university or government building, with a circular driveway. A bridge is visible on the left side of the image, crossing a body of water.

**Agriculture  
Building**



# Potomac Flats production evaluations

1905

