

# SLOANE SQUARE

ART \ CULTURE \ FASHION \ FOOD

SEPTEMBER 2020

## SOAKING UP SUMMER

LOCAL ESCAPES AND AL FRESCO DINING

### *Local heroes*

THE VOLUNTEERS WHO ARE GOING THE EXTRA MILE

### *Autumn fashion*

KEY LOOKS FOR THE SEASON FROM YOUR FAVOURITE BRANDS

### *Screen grab*

A REWIND THROUGH CHELSEA'S CINEMATIC HISTORY

*Ted's Grooming Room*





T E D B A K E R  
L O N D O N

*Ted's Grooming Room*

**£10 OFF**  
**TRIM OUT TO HELP OUT**

HAIR'S SOMETHING  
TO REMEMBER, TED'S  
EXCLUSIVE **£10 OFF\*** OFFER  
IN SEPTEMBER.



\*T&Cs VALID FROM 01.09.2020 £10 OFF IS REDEEMABLE ON ALL WALK-IN AND BOOKING SERVICES. THIS OFFER IS NOT TO BE USED IN CONJUNCTION WITH ANY OTHER OFFER AND IS ONLY VALID ON FULL-PRICE SERVICES. OFFER ENDS 30.09.2020

07 LEADER

It is great to see the area buzzing once again, with a hive of activity as we head into autumn

08 CALENDAR

A guide to local happenings

15 NEWS

All the latest goings-on in Chelsea

22 COMMUNITY NEWS

The stories that matter



20



46



38

27 TRENDING

Our top seasonal picks for men, women and children

33 IN DETAIL

What makes a Miista shoe so special?

COVER

Pavilion Road offers great al fresco dining options



34 FOOD NEWS

A taste of what's new on the food and drink scene

38 FOOD AL FRESCO

There is still time to enjoy all our glorious outdoor spaces

42 FOOD RECIPES

Delicious sweet treats to try at home

# Contents / September 2020



42

- 46 TOP 10**  
Spooky ideas for Halloween
- 48 ART NEWS**  
Dali sculptures among some of the exhibitions not to be missed
- 52 HOSPITALITY**  
Why go abroad when we have the best hotels on our doorstep?
- 56 CULTURE**  
A walk through Chelsea's cinematic history
- 61 CHELSEA AWARDS**  
Headline sponsor Knight Frank on the spirit of community and charitable giving
- 68 K+C FOUNDATION**  
Raising funds to help young people into employment is high on the list of priorities
- 70 LOCAL HEROES**  
The volunteers, who through CW+, are going above and beyond the call of duty
- 77 BEAUTY NEWS**  
Time to rescue those lockdown locks
- 80 FITNESS**  
As gyms reopen, there is no excuse not to get fit
- 82 MY CHELSEA**  
Meet Adam Handling, chef at the Belmond Cadogan Hotel

## SLOANE SQUARE

is produced for Cadogan by

### Publishing Business

3 Princes Street  
London  
W1B 2LD  
020 7259 1050

### Cadogan

10 Duke of York Square  
London  
SW3 4LY  
cadogan.co.uk

### Editor

Cally Squires  
020 7259 1058  
cally@pubbiz.com

### Writers

Sophia Charalambous  
Rey Day  
Charlotte Pasha

### Sub editor

Selma Day  
020 7259 1052  
selma@pubbiz.com

### Designer

Andy Lowe

### Advertisements

Bridget Rodricks  
020 7259 1059  
bridget@pubbiz.com

Richard Taylor  
07423 099 277  
richard@pubbiz.com

### Publisher

Adrian Day  
020 7259 1055  
day@pubbiz.com

Printed on ECF (Chlorine Free) paper using fibre sourced from well-managed forests. All inks vegetable based. Our printers are certified to ISO 14001 Environmental Management.



Publishing Business is a member of the Professional Publishers Association and observes the PPA Code of Publishing Practice.



@SloaneSquareMag  
@DOYSQ  
@SloaneStreetSW1  
@Pavilion\_road



@SloaneStreetSW1  
@PavilionRoad  
@dukeofyorksquare  
@SloaneSquareMag  
@Kingsroad.london



# Editor's letter / September

SLOANE SQUARE / SEPTEMBER 2020

**WELCOME BACK**  
Chelsea is springing back to life as our cultural hot spots, fitness studios and beauty salons reopen, alongside restaurants and shops. And don't forget our wonderful hotels if you're looking for a luxury staycation



A very warm welcome to the September issue of *Sloane Square* magazine, where we are thrilled to bring you news of museums and galleries springing back to life, our favourite fitness studios back open for business and, of course, some tips on the best of beauty treatments for top-to-toe pampering.

On the fashion front, we speak to Miista's Laura Villasenin to learn about the design and craftsmanship behind a shoe from the brand's AW20 collection, plus, as seasons shift, check out our Trending pages for back-to-school style inspiration.

In the spirit of keeping it local, we've got a guide for indulgent staycations at a couple of the area's fabulously chic hotels.

With Halloween at the end of October, our Top 10 tricks and treats, from sweets and chocolates to spooky decorations, can all be shopped locally. And, for an extra dose of sugar and spice, we've got tempting dessert recipes from baker Peggy Porschen and the Saatchi Brasserie's chef Philip Neil to satisfy the most sugary of cravings.

Finally, the ultimate foodie Adam Handling, chef of the Belmond Cadogan Hotel, shares his passions including his restaurant's commitment to reducing food waste. What's not to love?

As always, stay in touch with us and keep well,  
*Cally Squires, Editor*



TOP: A warm welcome awaits at the Belmond Cadogan Hotel  
ABOVE: Three of our favourite readers' tags from Instagram @sloanesquaremag



IMAGE: SASHA GUSOV

## SEPTEMBER 13-18

### FOCUS/20

Design Centre, Chelsea Harbour is presenting Focus/20 in a new format, rising above the obstacles presented by the pandemic.

Some 120 showrooms and 600 international brands will be presenting their latest collections, but this year will see a mix of physical and online events to a global audience.

Visits will largely be trade-focused, with design professionals able to explore collections first-hand; while a virtual programme of online talks, webinars and product launches will be available for London's design aficionados to enjoy.

The Conversations in Design series



will see leading international names in the world of design lead talks, workshops and tours, while explorations of new collections can be streamed online.

**Chelsea Harbour, Lots Road**



# Events SEPTEMBER & OCTOBER diary

## UNTIL SEPTEMBER 25

### A DAY IN YOUR LIFE

#### PHOTOGRAPHY COMPETITION

Chelsea-based artist Alison Jackson is running a photography competition, with applications closing on September 25.

The aim of the competition is to support young and aspiring photographers living in Kensington & Chelsea. 'A Day in Your Life' wants to see how you spent isolation during lockdown, and what your new normal looks like now. A winner will be selected weekly on social media before an exhibition scheduled for October. Prizes for winners include courses at UAL, cameras and new camera equipment and membership of the Royal Photographic Society.

Alison said: "There are many extremely talented people and I want to give them a chance."

**For information visit [dayinyourlife.co.uk](http://dayinyourlife.co.uk)**



JON REES



# Calendar

SLOANE SQUARE / SEPTEMBER 2020



## STREAMING SHOWS AT CADOGAN HALL

Cadogan Hall has become one of the first venues in the UK to reopen its doors to live performances since lockdown.

The venue is welcoming musicians back for a series of carefully-planned, live-streamed concerts and recording sessions over the coming weeks, adhering to strict government guidelines, of course..

Though Cadogan Hall cannot yet host performances with audiences, it has streaming shows lined up with the English Chamber Orchestra, Monty Python legend John Cleese, rehearsals and more, all of which audiences can tune into from the comfort of their own homes.

[www.cadoganhall.com](http://www.cadoganhall.com)



SECTION OF THE BERLIN WALL, 1989.  
INSCRIBED: 'DOWN'.

## SEPTEMBER 22-JULY 2021

### FOE TO FRIEND: THE BRITISH ARMY IN GERMANY SINCE 1945

The National Army Museum's latest exhibition will explore the stories and legacy of over a million British soldiers who have lived and served in Germany over the last 75 years.

Helping to rebuild the devastated German nation after the Second World War, while also helping protect Britain during the Cold War, the presence of British troops in Germany has been central in the recent history of the British Armed Forces.

The exhibition charts the changing relationship between the two countries, highlighting the contrasting feelings of deep suspicion, stories of espionage and heartache with everyday tales of friendship, family life and fun.

**Free admission. Royal Hospital Road**

## SEPTEMBER 17-27

### CHELSEA HISTORY FESTIVAL

This year's Chelsea History Festival will bring a mix of physical and digital events to the district, with a diverse programme of talks from world-renowned speakers, authors, thinkers and historians.

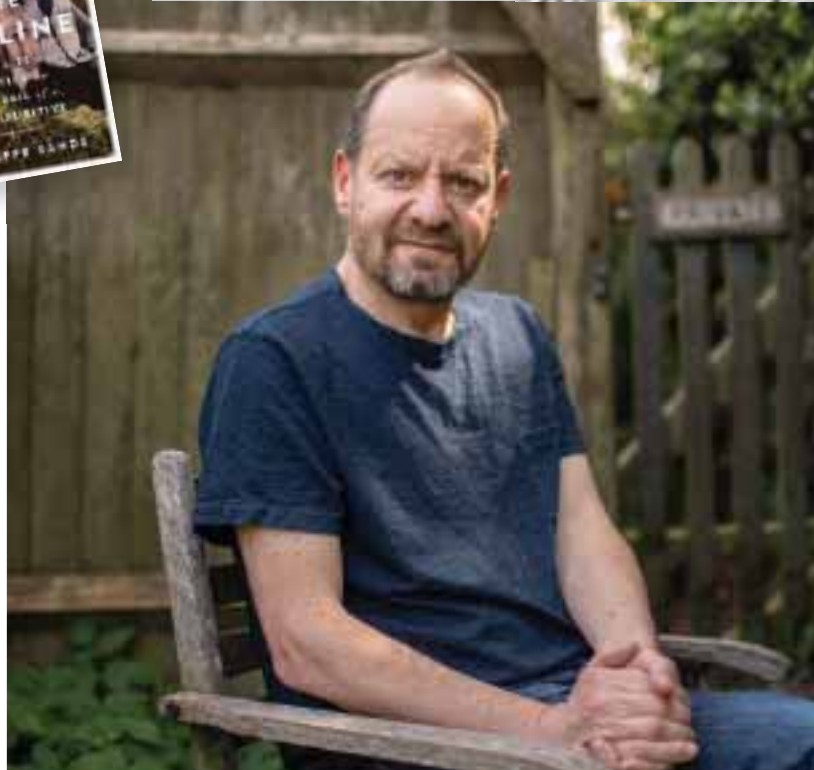
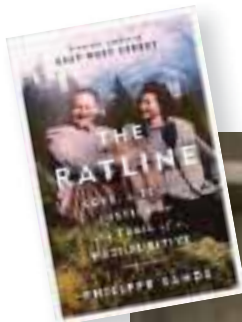
Co-founded by the National Army Museum, Royal Hospital Chelsea and Chelsea Physic Garden – and supported by Cadogan – the Chelsea History Festival will explore a huge range of historical events and the impact they have had on the world around us.

Speakers will include human rights lawyer and author, Philippe Sands, who will be discussing his new book on *The Ratline* – the escape routes used by Nazis and other fascists fleeing Europe during the aftermath of the Second World War.

Hallie Rubenhold, winner of the Baillie Gifford Prize for Non-Fiction 2019, will explore the lives of the five women killed by Jack the Ripper; Michael Morpurgo, writer of *War Horse* and former Children's Laureate, will talk about his experiences of lockdown and creating fiction from war; and Professor Olivette Otele will discuss the experience of Africans in Europe, ahead of the publication of her new book, *African Europeans: An Untold History*.

More names are due to be announced.

[chelseahistoryfestival.com](http://chelseahistoryfestival.com)



Above: Professor Olivette Otele  
Below: Philippe Sands  
Right: Catherine Eddowes and Elizabeth Stride – two of Jack the Ripper's victims  
Far right: Hallie Rubenhold



IMAGE © ADRIAN SHERRATT



IMAGE © SARAH BLAKE



## OCTOBER 2

### SLEEP OUT

Registration for the annual Sleep Out on Friday October 2 is now open. This year, Glass Door, which provides shelter and support services for homeless people, is offering the option of participating remotely by sleeping in – be it on a balcony, garden or even the living room floor. If government guidelines allow, there will also be an option to join in by sleeping out at Duke of York Square.

The night's line-up of activities also includes the bedtime story read by actor Jim Carter, who plays Mr Carson in *Downton Abbey*, a talk from sleep specialist Dr Kat Lederle and Nadia Mishchanka will host a rise-and-shine yoga class. Senior communications manager Melissa Kershcen said: "The important thing is that the community continues to come together to do what we can to support others out of homelessness."

[glassdoor.org.uk/Event/sleep-out-2020](https://glassdoor.org.uk/Event/sleep-out-2020)



**ANDREW MARTIN POP-UPS**  
Design veteran Andrew Martin has launched two new pop-up spaces on Sloane Avenue, to celebrate the company's most recent paint collection.

The first showroom is dedicated to the new luxury paint, which comprises a collection of 114 colours. Artwork and furniture makes up the second showroom, with over 260 pieces available ranging from photography to sculpture.

**60 Sloane Avenue**

## THE CHELSEA THEATRE

The Chelsea Theatre, which had just reopened after a major refurbishment before lockdown measures were implemented, is continuing its programme of free workshops and events for the local community – and as soon as it is safe to do so, classes will move from online to in-person.

The events are designed for those who live in the area to learn new skills – including exercise workouts, cooking classes and playing an instrument.

Those living on the World's End estate are able to access instruments free of charge if interested.

**7 World's End Place**



## Today, it's not an estate agent you need. It's a partner in property.

And nowadays, with so much at stake, it pays to choose that partner with great care.

Perhaps unsurprisingly, the name Knight Frank invariably appears at the top of most people's candidate list.

We are, after all, the world's largest independent property firm. With 500 offices across 60 territories worldwide.

But what also sets us apart is the fact that we operate as a *partnership*. Something no other major competitor can lay claim to.

### **The value of independence**

We are neither owned by a bank, nor are we beholden to shareholders.

We believe that makes a crucial difference to the quality and impartiality of the advice we can provide.

Indeed, this principle of partnership extends to our clients, too.

We have always prided ourselves on our tradition of nurturing long-standing relationships, many stretching back for decades.

### **A partner for life**

People tend to stick with us, because they trust us. Whether they are looking for a home to buy or rent, commercial property, expert mortgage advice, or even help with moving.

And now that we have invested over £5 million over the last four years in our professional training programme, we are gaining clients and market share at an ever increasing rate.

This may well explain the four Gold awards we won

at last year's UK Customer Experience Awards.

As one commercial property client recently told us, *"You are streets ahead of the competition, as you bring me relevant opportunities, aligned to my property strategy, with evidence and a recommendation"*.

### **Client satisfaction**

Or this, from a client in Notting Hill: *"It is reassuring to have such a vast range of expertise on hand through a single source"*.

If you would like to find out just how vast that range of expertise really is, may we invite you to pay us a visit at [knightfrank.co.uk](http://knightfrank.co.uk)

Or you can ring us on 020 4502 8869.

Your partners in property await you.



Your partners in property.



## ST PHILIP'S SCHOOL

An outstanding prep school for boys aged 7–13



Inspirational teaching in a warm and nurturing environment  
that delivers exceptional results

For admissions please contact Julia Ironside: [j.ironside@stpschool.co.uk](mailto:j.ironside@stpschool.co.uk)



**BOX GALLERIES** has spent the last year meeting and selecting new artists to join its existing stable of artists, and for the first time will be shining the spotlight on the very best of emerging artistic talent from the UK.

The first to show at the King's Road gallery will be **FAITH**, an exhibition of the darkly dynamic work of Tommy Fiendish.

Held from September 9-30, entry is open to the public and free of charge, featuring a set of exclusive original works and signed limited edition prints.

*402 King's Road*

JAMES BOND'S fictional home in Wellington Square is now available to rent for £3,250 a week, and is on the street where the 007 agent was said to have lived in Ian Fleming's books.

The property was pinpointed by William Boyd in his Bond continuation novel *Solo*, with reference to Fleming's line in the 1961 novel *Thunderball* which states that Bond drove out of the square into King's Road and then "fast up Sloane Street and into the (Hyde) Park."

At almost 3,000 square feet spread across five floors, the five-bedroom family house features a study, kitchen, roof terrace and private garden and is available unfurnished for a long let through estate agent Knight Frank.

Wellington Square was built in the early 1850s, coinciding with the death of the Duke of Wellington.

**THIS YEAR MARKS** a landmark decade of Annoushka, the luxury jewellery company founded by Annoushka Ducas MBE.

Widely referred to as the “queen of charms”, she founded Links of London before launching Annoushka.

As she celebrates 10 years, Annoushka has launched Lovelock and Lovelink and My Life in Seven Charms – both inspired by charms, and how they hold memory and meaning.

My Life in Seven Charms explores Annoushka’s own life story, designing unique pieces that include a diamond-encrusted paw to represent her love of dogs.

Lovelock and Lovelink reflect how touch and connection are such essential parts of living and the five 18ct gold Lovelocks, each set with precious stones to reflect a talismanic symbol, are designed to either fasten or connect to a striking cable chain.

The Lovelink clasp, which allows for any combination of Annoushka charms to slip easily on with a simple click, comes with a double tour leather bracelet in a choice of black, tan, green, red and cream and is Annoushka’s first unisex offering.

Speaking about what this anniversary means to her, Annoushka said: “While the world has changed immeasurably in the 10 years since launching Annoushka, I think our core values have remained constant and relevant.

“There’s a sense of protection and magic woven into all of my designs, that have always felt important, but never more so than living through a really uncertain time – I like to think of my charms as little talismans to hold close and connect the wearer to something joyful.”

*41 Cadogan Gardens*



**LOUISA RISCH'S** Nuance in Nature exhibition will be taking place this month.

The classically-trained portrait painter celebrates her love of still life and landscape painting in her work, using lively colours and dynamic light patterns, and experimenting with colour and light.

Louisa finds local, seasonal produce to paint, from flowers, fruit and vegetables and does this in an “alla prima” impressionist style, taking inspiration from Sorolla, Manet and Degas. The exhibition will take place from September 18 to 24. *Studio F, Chelsea Studios, 410-146 Fulham Road*



**JO MALONE** has unveiled its biggest fragrance launch of the year, *Lost In Wonder*. Consisting of two fragrances, *Fig & Lotus Flower* and *Cypress & Grapevine*, it is inspired by the ancient Hanging Gardens.

Celine Roux, global head of fragrance, said: "Back in 2016, I visited an incredible exhibition that showcased depictions of ancient fabled gardens throughout history.

"I loved this idea of fantasy and faraway lands, and I was captivated by one story in particular – that of the mythical Hanging Gardens.

"To truly capture the essence of these beautiful gardens we read many books and spoke to an archaeology professor from Oxford. We imagined the fresh, heady, spicy aromas that might have mingled in the air along the garden's shaded walkways and the



fruits and flowers beneath them, and we wanted to capture something along those lines."

*150 Sloane Street*

**CHELSEA PHYSIC GARDEN** has reopened following the easing of lockdown restrictions.

A host of talks, workshops, courses and activities are back on, and all taking into consideration government social distancing guidelines.

For those with younger families, the Garden will host a series of socially-distanced events, including Garden Safari, Dinner with Dinosaurs and Chocolate Tuesday.

A not-to-be-missed event for adult plant

enthusiasts is the Behind the Scenes Tour in October, where a senior member of the horticultural team will take you to areas of the garden, not usually open to the public.

Visitors will be able to find out more about the work involved in managing a botanical collection like this, which is the oldest in London, housing around 5,000 different medicinal, herbal, edible and useful plants.

*66 Royal Hospital Road*





SLOANE STREET is channelling summer vibes of the French Riviera right here in Chelsea, with the August opening of chic menswear brand Façonnable's first UK store. Combine a visit with Colbert's Pétanque in the Square pop-up, for a true touch of the South of France.  
*134 Sloane Street*



**ONE SERVICE** that has been forging ahead in recent months is the wedding service at Chelsea Old Town Hall.

In the first six weeks after reopening in early July, it conducted over 200 wedding and civil ceremonies.

Despite the restriction on the number of guests and social-distancing measures being in place, registrars say couples are getting creative, with personalised face masks and live streaming of the special day.

Safety is still a top priority and all the required measures – and more – are in place throughout.

Rich and Rachel Purdy got married there in July. Rachel said: “Around 10 days before we were due to say ‘I do’, we were informed that we were only allowed to have our parents at the ceremony – no reception, no singing or dancing! In the end, we managed to turn it into a very special, intimate wedding with our closest family. Sadly, Rich’s family couldn’t attend in person but were with us by FaceTime during the ceremony, which was so special.”

Along with weddings and civil ceremonies, the team at Chelsea Old Town Hall has also been working through a backlog of over 2,000 birth registrations since reopening the facility in June. The system allows four socially-distanced registrations to take place at the same time.



MIR AND MRS PURDY

**A PRIVATE** cognitive health centre is to open in Chelsea this October.

The Soke will combine reactive and preventative mental healthcare, with services including psychotherapy, psychiatry, counselling, and leadership development services.

It provides mental healthcare in a non-clinical environment, aiming to shift the image of therapy.

Features include low-lit Quiet Pods next to practice rooms, where

clients can relax and recharge.

Founder and CEO Maryam Meddin said: “We are all acutely aware of the need for stigmas around mental health to change but as long as service providers continue to adopt a clinical culture it will remain impossible for people to avoid self-diagnosing as ill and in need of “medical” intervention. The time to modernise the sector is long-overdue.”

241 Fulham Road

**JEWELLER ANABELA CHAN**, known for her one-of-a-kind, vibrant designs using laboratory-grown gemstones, has opened a flagship boutique in Sloane Street.

Inspired by the colours and geometries of nature, special features of the jewellery store include a hanging garden made up of over 1,500 stems of preserved natural flowers and foliage.

Designed by Anabela's architect husband, Jimmy Hung, the space perfectly reflects her ethereal jewellery.

Anabela said: "In times of challenge, it is both refreshing and a blessing to be able to bring positive news; a new opening to offer our clients and friends uplifting and joyful jewels in a newly-designed space that is not only safe, but offers a truly special, magical and personal experience that is worth venturing out for.

"We remain consciously confident with the tremendous support and love from our community, and I personally look forward to welcoming you safely soon."

*35B Sloane Street*



**ORIGINALLY PUBLISHED** in 2013, this revamped 2020 edition of *A Love For Food* from Daylesford founder Carole Bamford contains refreshed recipes as well as a new introduction from the pioneer herself. She said: "Growing and consuming food sustainably have never been so important and I hope that as you cook your way through the book, you will not only love the recipes; you will be inspired to play your own part in helping to preserve nature's larder for the generations that follow." The 150 recipes move through the seasons, from salads to stews and soups, and are family favourites passed down to her by her mother and grandmother.

Daylesford, 76-82 Sloane Avenue, [daylesford.com](http://daylesford.com), £30

# CASSANDRAGOAD



## OZYMANDIAS

Colourful stones  
with diamonds  
in yellow gold.  
Rings inspired by  
a tour of Egypt.



[cassandragoad.com](http://cassandragoad.com)

CHRISTIAN LAMB celebrated her 100th birthday with a cake made by Searcys, the same company that made her wedding cake in 1943. A WWII Women's Royal Naval Veteran, Christian worked on D Day Maps at Churchill's Secret Offices. It was her mother who asked the Sloane Square branch of Searcys to make her wedding cake during the war. She celebrated her birthday with her daughter and friends at a birthday tea party. Searcys MD, Paul Jackson, said: "Searcys has been honoured to be able to celebrate not one, but two special occasions in Christian's life – her wedding in 1943 and her 100th birthday. Our in-house baker Yvonne Graham has created the 100th birthday cake taking inspiration from Christian's passion for botany."



KHUSHNA SULAMAN-BUTT

**ART LOVERS WILL BE THRILLED** that the Saatchi Gallery in Duke of York Square reopened on September 3, with an exhibition called London Grads Now.

The thought-provoking exhibition showcases more than 200 works by graduating students from London's leading fine art schools including Chelsea College of Arts, the Royal College of Art, the Slade School of Art, Goldsmiths and Central Saint Martins.

Following the cancellation of graduation shows across London due to COVID-19, the Saatchi Gallery along with the Kristin Hjellegjerde Gallery, invited students and lecturers to organise an exhibition that would enable graduating students to showcase their works within international-quality gallery spaces.

There is a one-way route in place through the gallery's halls for safety, and face coverings must be worn inside.



CHRISTIAN LAMB ON HER WEDDING DAY

**INEOS OIL AND GAS** has donated £10,500 to the Kensington & Chelsea Foundation to help support vulnerable members of the community as well as providing essential food supplies over the course of the pandemic.

CEO David Brooks said: "INEOS is delighted to continue to support the K+C Foundation by means of a donation. The Foundation does some unique work in our community that in these difficult times is needed and appreciated more than ever."



BETTY LEUNG



INEOS CHAIRMAN SIR JIM RATCLIFFE



CLAUDIA SEBIRE, the destination boutique, that has curated a selection of luxury European fashion in the heart of Chelsea for 30 years, has donated 10 per cent of sales from an exclusive shopping event to the Kensington & Chelsea Foundation.

**THE FIRST PHASE** of a New Homes Programme to build over 600 new homes on council-owned land, including at least 300 at social rent, has been approved. The 97 applications approved will be across four developments on Kensal Road, Acklam Road, Hewer Street and St Helens Gardens, and will offer various tenures including 49 at social rent, 22 at intermediate



and 26 at market rent. Cllr Kim Taylor-Smith, Deputy Leader and Lead Member for Grenfell, Housing and Property, said: "Building new homes and maximising the number of affordable units in such an area of high land values is of paramount importance, and this planning application is an important first step. We have the

second highest level of homelessness in London and, although the council does not have enough land to build our way out of this crisis, these social homes will give some of our most vulnerable residents a secure, permanent home."

[rbkc.gov.uk/housing/new-homes-consultation/new-homes-consultation](http://rbkc.gov.uk/housing/new-homes-consultation/new-homes-consultation)





SENZAFINE NIGHT COLLECTION, DESIGN POLIFORM.

# Poliform

**Poliform UK**  
Wigmore Street, London  
King's Road, London  
[poliformuk.com](http://poliformuk.com)

[POLIFORM.IT](http://POLIFORM.IT)

# **KENSINGTON + CHELSEA ART WEEK**

## **A WORLD OF CULTURE IN WEST LONDON**

**1 – 11 OCTOBER  
2020**

Public Art Trail Across 8 Zones + Digital Culture Map  
+ Galleries + Museums + Science meets Art + Poetry  
+ Talks + Tours + Online Events + Murals + Windows  
Displays + Workshops + Much More...

ANNOUSHKA



*AUTUMN  
agenda*

A ROUND-UP OF  
WHAT'S NEW  
THIS SEASON



**WOLFORD**  
Classic black mask  
£20  
17 King's Road

**SUNSPEL X  
TROUBADOUR**  
Pathfinder  
Briefcase, £375  
73 Duke of York  
Square



**BRUNELLO  
CUCINELLI**  
Virgin wool single  
breasted suit, £5,090  
159 Sloane Street,  
8 Symons Street

SALVATORE FERRAGAMO



**CALVIN KLEIN**  
Shirt, £60  
Harvey Nichols,  
109-125 Knightsbridge

**JOHN LEWIS**  
Stripe linen  
cotton tie in  
green and  
white stripe,  
£25  
Peter Jones,  
Sloane Square



**BOSS**  
Zipped ankle boots in vegetable-  
tanned leather, £319  
35-38 Sloane Square

**HOBBS**

Annie  
Trousers in  
red and black,  
£89  
88 King's  
Road



**ANNOUSHKA**

The 18ct yellow gold  
Star Lovelock charm  
and chain, from  
£8,870  
41 Cadogan Gardens



**HERMÈS**

Gloves  
in glazed  
lambskin,  
£740  
1 Cadogan  
Place

JOSEPH



**CEFINN**

Heidi silk collarless  
blouse  
£260  
156 King's Road



**OLIVIA  
VON HALLE**

Aureta Edith  
Mid-Length  
Dress, £595  
190 Pavilion  
Road



**GU DE**

Milky crocodile-effect leather  
shoulder  
bag, £600  
Harvey Nichols, 109-125 Knightsbridge



**MIISTA**

Varuna Blanched  
Almond Woven Mules,  
£135  
41 Duke of York Square

# Fashion / Children

**KENZO**  
Kids' jacket, £156  
Harvey Nichols  
109-125 Knightsbridge



**AMAIA**  
Large hair bow, royal blue, £6  
14 Cale Street



BRORA



**COS**  
V-neck Merino Cardigan, £35  
19 Duke of York Square



**ZARA**  
Camel coat, £49.99  
Unit 65  
Duke of York Square



**HUNTER**  
Children's Original Wellington Boots in red, £45, Peter Jones, Sloane Square





**TROTTERS**  
Blafre Orange Small Backpack, £45  
34 King's Road

18ct Gold Lovelocks from £935



41 Cadogan Gardens  
Harrods • Liberty  
Harvey Nichols

 @annoushkajewellery

 07748 788641

[annoushka.com](http://annoushka.com)

*Annoushka*  
10 YEARS

**CHELSEA  
HISTORY  
FESTIVAL**

23-27  
SEPTEMBER 2020



# THE PLACE TO EXPLORE HISTORY

For updates and more information about virtual and physical events sign up at:

**[chelseahistoryfestival.com](https://chelseahistoryfestival.com)**

FOUNDING PARTNERS

NATIONAL  
**ARMY**  
MUSEUM



SPONSORED BY





“We design for people who not only see beautiful design, but also the craftsmanship that goes into it”



MIISTA FOUNDER  
LAURA VILASENIN  
ON CREATIVITY AND  
CRAFTSMANSHIP.  
AS TOLD TO  
CALLY SQUIRES

“I FOUNDED MIISTA IN 2010 and we opened our doors in Chelsea in 2018. The core of our vision is our craftswomen and men in Alicante, which is home to a skilled shoemaking community that has been upholding tradition since the 19th century.

The inspiration behind the design of Frostine comes from the overall theme of Miista AW20. We wanted to create volume, not only with foams but this time experimenting with stretch textiles in a different way. In this case, we are creating volume by adding foam to a satin fabric.

The design process normally takes around four months and we work in collaboration with the artisans in Spain, from initial concept boarding and sketching, to pattern cutting and sampling. The signature details of Frostine are the very squared insole shapes, featured in the last two seasons. The colour palette for AW is electric but, at the same time, awakes a homely and warm feeling with shades like this teak, that has a caramel undertone.

Frostine is a winter sandal and we envision wearing them with wintery socks, however, they can be worn barefoot too. For us, 8cm is a high heel, but the fact that we are using orthopaedic memory foams adds comfort and releases the pressure of the heel height. It almost feels like you are not wearing heels!

We design for people who not only see beautiful design, but also the craftsmanship that goes into it.”  
*41 Duke of York Square*



FROSTINE  
SHOE IN  
TEAK,  
£230



PAVILION WINE on Pavilion Road has recently launched an online shop, as well as the option to 'click and collect' from the store.

Customers can choose from a range of wines and deli bites, and can even order an 'aperitivo bundle' featuring cured meat, antipasti and wine.

The shop hopes to launch free delivery for locals soon.

*255 Pavilion Road*



**ARTISAN BAKERY** GAIL's has introduced hampers as part of its At Home range.

At the start of lockdown, the bakery offered home delivery and click and collect services for a range of its products, including hard-to-find baking ingredients such as yeast, flour and eggs. The hamper range consists of six gift boxes to suit different occasions or time of day. They include the Breakfast in Bed; Farmhouse Breakfast; Cookie Box; Cake Box; Cream Tea Box; and Sofa Picnic. Each box comes with a GAIL's tote bag.

*209 King's Road*





SOPHISTICATED RESTAURANT and bar Sumosan Twiga, which combines Italian and Japanese cuisine, is thrilled to introduce Friday night DJ nights, with the first hosted by DJ Carly Foxx.

Running weekly from 9pm until late, acclaimed DJ Foxx and her crew will bring an eclectic selection of sounds ranging from tropical house to latin beats and floorfillers, while guests dine on the full à la carte menu, featuring the likes of Alaskan marinated miso black cod and sushi, as well as seasonal wild mushroom risotto with black truffle and paccheri with lobster.

*165 Sloane Street*

**A NEW BAKERY** came to the King's Road at the end of August, when Fortitude Bakehouse opened at 55 King's Road. The artisan bakery's third site sells unique sourdough loaves, probiotic soda bread, beautiful loaf cakes, sticky buns and tasty dishes like an award-winning Berber omelette with harissa.

The eco-friendly bakehouse uses a power-saving coffee machine for making single origin Hasbean brews, electric vans for deliveries and has a no-waste policy in place.  
55 King's Road



VARDO (pictured) in Duke of York Square is Chelsea's first rooftop bar. There are now 500 alfresco seats for diners to choose from when eating out in the area.

**A MODERN** French bistro has landed on the King's Road, bringing another top dining option to the neighbourhood.

Be-stro is headed up by chef Francois Roldan who has worked alongside partner Jonathan Vercoutere in Dubai for the last decade. It will offer dishes such as saucisson served with cornichon; flamed beef carpaccio; polenta with padron peppers; sea bass ceviche; and a rich and decadent pasta dish served with Comté cheese, winter truffle and ham, named Grandma's coquillettes.  
386 King's Road

# BELMOND CADOGAN HOTEL LONDON

*We invite you to unwind at Belmond Cadogan Hotel in our healing retreat in partnership with British artisanal brand, Bamford. Choose from an exceptional menu of all-natural and organic therapies, including rejuvenating facials and specialist massages.*



# Open tables

THERE IS STILL PLENTY OF TIME TO ENJOY A SPOT OF AL FRESCO DINING AROUND CHELSEA. THE NEIGHBOURHOOD HAS TRANSFORMED ITS OUTDOOR SPACES TO ENSURE DINERS CAN SAFELY ENJOY INDIAN SUMMER NIGHTS IN THE FRESH AIR



STANLEY'S



PAVILION ROAD

## PAVILION ROAD

A real Smörgåsbord of delights awaits in Chelsea's open air food hall. Grab a cup of coffee, a pastry, or something more substantial in one of the many restaurants then shop for perfect picnic items in the artisan food shops whilst soaking up the vibrant atmosphere.

**Pavilion Road**



THE CHELSEA PHYSIC GARDEN

## STANLEY'S

A new addition to Chelsea, Hugh Stanley's debut restaurant Stanley's opened in July with an English country garden-inspired courtyard, which seats 60 people outside. Already a hit with locals, the seasonal British menu was created by head chef Olivia Burt, a finalist in last year's *MasterChef's The Professionals*. For those looking for an al fresco tipple at the bar, the wine list has been put together with one of Chelsea's oldest wine merchants, Lea and Sandeman.

**151 Sydney Street**

## THE CHELSEA PHYSIC GARDEN

Gardens don't get more exotic or intriguing than the Chelsea Physic Garden. The horticultural institution is back open with visitors able to pre-book 90-minute slots to roam the gardens. The Physic Garden Café is also open selling a selection of delicious takeaway cakes, pastries, ice-cream and drinks.

**66 Royal Hospital Road**



COURT ON THE SQUARE IMAGE: ROBERT SMAEL

## THE ROYAL COURT AND COLBERT IN THE SQUARE

Colbert has partnered with French aperitif brand Lillet to launch an open-air bar with guests able to enjoy a game of pétanque while sipping a Lillet spritz. Similarly, the Royal Court Theatre has created Court on the Square, an outdoor pop-up bar and café open from Tuesdays to Sundays, offering a menu of light bites to be enjoyed in sunshine from noon onwards.

**Sloane Square**







COLBERT, LILLET, PETANQUE... PERFECT IMAGE: DAVID LOFTUS



SAATCHI BRASSERIE

## DUKE OF YORK RUNNING TRACK

For the first time ever, the running track in front of the Saatchi Gallery is open to the public for visitors to enjoy a socially-distanced picnic. Specially-marked bubbles can be found on the grass to keep distancing easy. The track is open, on Saturdays only, from 10am to 6pm. It's the perfect spot to enjoy a takeaway from one of the artisans on Pavilion Road, or – at the weekend – a treat from the Fine Food Market, curated by Partridges. The market has over 20 stalls offering locally-produced meat, oysters, fish, bread, cakes, hot food and drinks.

*Duke of York Square*

## THE SAATCHI GALLERY BAR AND BRASSERIE BY SEARCYS

It is great to see the Saatchi Gallery restaurant open once again after all these months. Overlooking the blanket-adorned running track, it is the perfect spot for a touch of more formal dining. And, for those looking to recreate a touch of Searcys magic at home, see chef Philip Neil's recipe suggestion on page 43.

*Duke of York Square*

---

# Peggy Porschen

## PINK PAVLOVAS

Serves 6 to 8

### Ingredients

- 200g egg whites
- 200g caster sugar
- 200g icing sugar, sifted
- Pink food paste colouring
- 1 tbsp freeze-dried raspberries
- 120g fresh strawberries
- 1 sprig of fresh basil (optional)
- 200ml whipping cream
- Seeds of one vanilla pod
- Edible flowers, fresh berries or basil to garnish

### Method

Preheat the oven to 80 degrees celsius and line an oven tray with greaseproof paper. Draw six to eight round circles of about 12cm diameter onto the paper and turn it over before placing it onto the oven tray.

Place the caster sugar and egg whites into a metal or glass bowl and whisk together.

Place the bowl over a hot water bath and continue whisking until the meringue becomes white and fluffy and it reaches 55 degrees celsius.

Once the temperature is reached, place the meringue into the bowl of an electric mixer and whisk at medium speed until cool.

Once cool, gradually add the icing sugar and whisk until fully combined and stiff.

Mix one teaspoon of the meringue with a drop of pink food colour, and blend together with a palette knife until all the colour specs have dissolved.

Spread a thin line of the coloured meringue down the inside of the piping bag using the palette knife.

Fill the white meringue into the piping bag, about two thirds up, and twist the end of the bag to prevent the meringue from oozing out at the top.

Pipe the meringue in the circles on the paper, starting from the centre and keep piping around until you reach the edge of the circle.

Then pipe the meringue up the sides in rings, about 1.5 inches high. As you pipe, the pink colour should blend with the white meringue creating a pretty pink marbled effect.

Crush the freeze dried raspberries and sprinkle over the pavlovas.

Bake at 80 degrees celsius until the meringues come clean off the

tray and allow to cool.

To make the sauce, place the strawberries, one tablespoon of caster sugar, basil and one tablespoon of water into a sauce pan and bring to a boil.

Continue cooking until the strawberries have turned to mush and the caster sugar has dissolved, then remove the basil.

Crush the strawberries with a fork and pass them through a fine sieve to remove the pips.

Place the whipping cream and vanilla seeds into the bowl of an electric mixer and whisk until stiff.

Fill each pavlova with whipped cream and drizzle with strawberry and basil sauce.



219 King's Road

The Saatchi Gallery Bar  
Brasserie by Seareys

PHILIP NEIL'S  
EARL GREY  
PANNA COTTA

Serves 4

**Ingredients**

- 120ml whole milk
- 480ml double cream
- 50 grams granulated sugar
- 3 sheets of gelatine
- 2 vanilla pods
- 3 Earl Grey tea bags



# Sweet EATS!

THESE DELICIOUS DESSERTS  
WILL SATISFY THE SWEETEST  
TOOTH AND ARE DEFINITELY  
WORTH MAKING THE EFFORT  
TO CREATE AT HOME

**Method**

Place the milk and cream in a container with the Earl Grey tea bags, and allow to infuse overnight.

Soak the gelatine sheets in cold water until soft.

Remove the tea bags from the milk and cream. Add the liquid to a pan with the sugar and split vanilla pods. Stir on a low heat and stir until sugar has dissolved and then remove from heat.

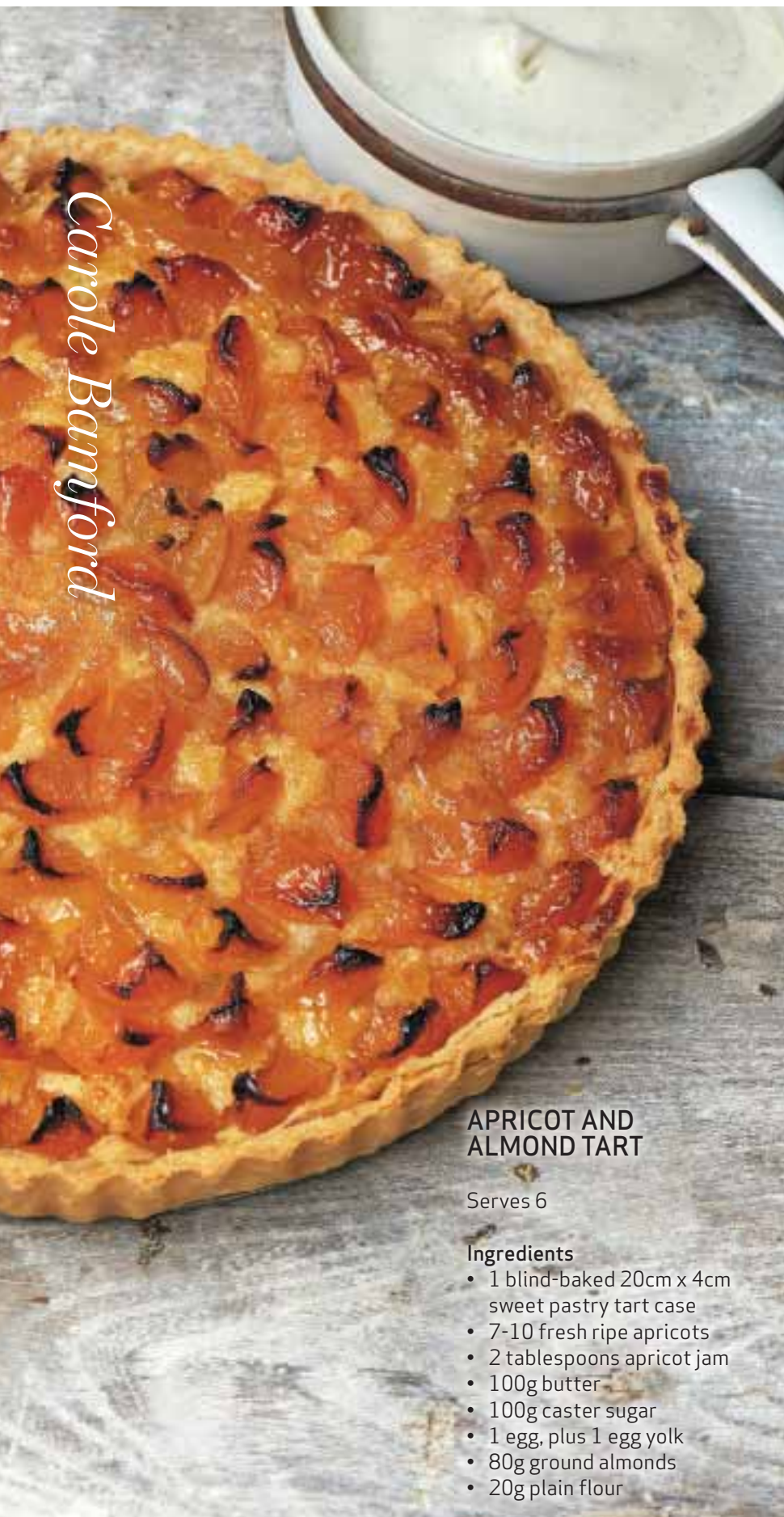
Squeeze the gelatine to remove any excess water, and add it to the pan. Stir constantly until the gelatine is melted, and allow the mixture to infuse for 10-15 minutes.

Strain the mixture through a fine sieve and pour evenly into prepared moulds. Refrigerate until set, for at least four hours or overnight.

To serve, dip each mould in warm water and gently turn out on to serving plates. We serve ours with seasonal berries and caramel sauce.

*Duke of York Square*

Carole Bamford



### APRICOT AND ALMOND TART

Serves 6

#### Ingredients

- 1 blind-baked 20cm x 4cm sweet pastry tart case
- 7-10 fresh ripe apricots
- 2 tablespoons apricot jam
- 100g butter
- 100g caster sugar
- 1 egg, plus 1 egg yolk
- 80g ground almonds
- 20g plain flour

#### Method

First make the frangipane by creaming the butter and sugar together until pale in colour, then add the egg and yolk gradually (you can also do this in a mixer). When all the egg is combined, stir in the ground almonds and the flour.

Put into the fridge for one or two hours to firm up, then spoon into the tart base, using the back of a spoon moistened with a little water to smooth the surface.

Preheat the oven to 170°C/ gas 3.

Cut the apricots in half, discarding the stones, then, depending on the size of the fruit, cut each half into two or three wedges. Starting at the outside of the tart, evenly space the apricots in a circular fashion, pushing each wedge halfway into the almond cream, and letting the other half protrude and point upwards. Repeat with more circles, working towards the centre, until all the apricots have been used up.

Place the tin on a baking tray and put into the oven for about 30 minutes, until the frangipane is golden brown and the apricots are nice and caramelised. Remove it from the oven and leave in the tin.

Meanwhile, put the apricot jam into a small pan with two tablespoons of water and leave it to bubble until you have a syrup. Brush the top of the tart with the syrup. Allow to cool slightly, then remove the tart from the tin and serve warm.

*A Love For Food, £30  
Daylesford,  
76-82 Sloane Avenue*



## *Sloane Gardens, SW1W*

**A Stunning First and Second Floor Maisonette just off Sloane Square. The Property occupies one of the prime spots at the quiet southerly end with views up the full length of this lovely tree lined street towards Sloane Square**

Large Reception 22' x 20' with high ceiling, wooden floor, floor to ceiling french windows, fabulous working fire and Balcony : Fully Fitted Kitchen with breakfast table : Master Bedroom with en-suite Bathroom and Dressing area: Second Double Bedroom : Second Full Bathroom

*Floorplan from [justin@proprium.co.uk](mailto:justin@proprium.co.uk)*

*Long Let £1750 per week*

[www.proprium.co.uk](http://www.proprium.co.uk)  
020 7589 6298  
[justin@proprium.co.uk](mailto:justin@proprium.co.uk)



**PROPRIUM**  
Established 1974



# *of the spookiest*



With Halloween stealthily creeping up on us, here are some ideas to bring out your inner ghoul

**AD HOC LONDON**  
Day of the Dead  
Headband and  
veil, £18,  
153 King's Road



**1** **TATEOSSIAN**  
Stainless steel cufflinks  
designed and made in  
collaboration with the  
band Grateful Dead.  
£320,  
55 Sloane Square

**THEO FENNEL**  
Silver Fez Skull Decanter  
Stopper  
£995  
169 Fulham Road



**3**



4



**PETER JONES**  
Vampire Boy  
Children's Costume,  
3-4 years  
£14.99 (various  
others available)  
Sloane Square

# Top 10 / Halloween hits

SLOANE SQUARE / SEPTEMBER 2020

5



**LAURENCE COSTE**  
Why should the black cats  
get all the action? Lottie  
earrings celebrate all the  
cool cats out there. £295,  
149 Sloane Street

6

**TASCHEN**  
640 pages of stylish  
scariness, £15,  
12 Duke of York Square



**JOHN  
SANDOE BOOKS**  
Board book  
version of a speech  
by Puck from  
*A Midsummer  
Night's Dream*.  
'Divine  
illustrations, dark  
and magical',  
£8.99,  
10 Blacklands  
Terrace

8

**NATOORA**  
Pumpkins? They've got 'em! Grown more  
for flavour than the look, but they do look  
wonderful in their own way. Choose from  
Delica, Violino, Napoletana, or Crown Prince.  
245 Pavilion Road



9



**BELMOND  
CADOGAN HOTEL**  
Why not try the  
Dead Oscar cocktail?  
Made with Krug  
Champagne, Star  
of Bombay gin and  
absinthe, £45,  
75 Sloane Street

10



**KATE SPADE**  
Any excuse for  
another little black  
dress... Ditsy begonia  
flutter-sleeve dress, £325,  
2 Symons Street



## JAPANESE PHOTOGRAPHY BREAKING BOUNDARIES

Jubilee Place gallery Michael Hoppen is exhibiting unique works by the late Japanese photographer Masahisa Fukase, until October 24.

*Private Scenes* features Fukase's signature 'Berobero' self-portraits, in which he touches tongues with friends and strangers, largely shot in bars around Tokyo's Shinjuku district.

Those who agreed to the shots with Fukase exhibit a range of reactions in the photographs, and the intimate act depicted in these works takes on deeper meaning in the context of social distancing.

The works show a concern with the boundaries between photographer, subject and identity – while other series on display including *Hibi* and *Private Scenes* see photographs adorned with watercolour paints and coloured ink.

**Michael Hoppen Gallery,**  
3 Jubilee Place  
T: 020 7352 3649,  
[michaelhoppengallery.com](http://michaelhoppengallery.com)

# Artistic *resurgence*

## A CHANCE TO SEE DALI'S ICONIC WORKS

Clarendon Fine Art has become the official UK gallery dealer for the Salvador Dali sculpture collections. Throughout September, the gallery will be hosting an exhibition of the iconic surrealist's sculptural works, many of which feature the world-famous symbols and imagery that have made Dali one of the best-loved artists of the 20th century.

**Clarendon Fine Art**  
131-133 King's Road  
T: 020 7349 9527,  
[clarendonfineart.com](http://clarendonfineart.com)



# Art / Round-up

SLOANE SQUARE / SEPTEMBER 2020



## CREATIVITY BORNE FROM BEIRUIT

Beirut-born, New York Academy of Art-trained painter Henry Jabbour is exhibiting works at Pontone Gallery until September 13.

His Fauvist-inspired, vividly-coloured and textural oil paintings of the human figure hint at the temporality of human experience, with amorphous forms moving across the linen canvas as if elusive and obscured.

**Pontone Gallery, 43 Cadogan Gardens**  
T: 020 7730 8777, [pontonegallery.art](http://pontonegallery.art)

### HIGHLIGHTING THE HISTORY OF THE KIMONO

The V&A is showcasing the beauty and cultural significance of the kimono in its exhibition, *Kimono: Kyoto to Catwalk*, running until October 25.

Exploring the garment's rich history – from the mid-1600s to its appearance in designer fashion shows – the exhibition features archetypal examples of its construction, artworks that place the garment front and centre, and references throughout pop culture.

Tickets are priced between £16 and £18.

**V&A, Cromwell Road**

**T: 020 7492 2000, [vam.ac.uk](http://vam.ac.uk)**



### BRUTALIST BUILDINGS

An upcoming collaborative exhibition at The Foundry sees artists Olivia Turner and William Braithwaite explore their relationship and response to the architectural legacy of Brutalism.

The artists will study the characteristics of Brutalist buildings, integrating these styles into their structural and geometric-inspired paintings and sculpture.

Turner's paintings, photographs and drawings focus on the compositional strength of Brutalism, layering structural elements to create works that put the spotlight on form.

Braithwaite's concrete sculptures explore ideas of scale and repetition, through modular, monolithic forms, with stairwells and staircases a particular point of reference throughout this current series.

Collaboratively, Brutalist buildings form the basis of a dialogue between the artists, melding two and three-dimensional viewpoints.

**The Foundry, 39 Old Church Street**

**T: 020 7351 5456, [thefoundrygallery.org](http://thefoundrygallery.org)**



## **19 West Eaton Place, Belgravia, London SW1**

A unique, self-contained office building approached through its own private gated Garden Courtyard, close to Sloane Square providing a safe and secure working environment.

**3,024 sq ft (280.9 sq m)**

TO BE LET

All Enquiries:

**mellersh  
& harding**

Jonathan Stern  
020 7522 8517  
jstern@mellersh.co.uk

Sammy Conway  
020 7522 8524  
sconway@mellersh.co.uk



*East,  
West*  
HOME'S

RECEPTION AT 11 CADOGAN GARDENS

SLOANE SQUARE / SEPTEMBER 2020



**BEST**

**WITH THESE INCREDIBLE HOTELS PROVIDING A LUXURY STAYCATION, AMAZING NEW OPENINGS SUCH AS HÔTEL COSTES IN THE PIPELINE, AND THE JUMEIRAH SOON TO REOPEN, WHY SPEND HOURS FLYING TO A FAR-FLUNG DESTINATION WHEN WE HAVE IT ALL ON OUR DOORSTEP?**

## 11 CADOGAN GARDENS

**SITUATED JUST BEHIND** the joy of artisanal delights that is Pavilion Road, 11 Cadogan Gardens is a discreet boutique hotel perfectly situated for exploring the heart of Chelsea on foot.

The hotel's restaurant Hans' Bar and Grill is the ideal spot for al fresco dining, from breakfast through to dinner, on the pedestrianised Pavilion Road, which has become a picturesque hub of café culture.

At the start of August the restaurant launched grill nights every Thursday and Friday evening from 6pm, replacing the normal à la carte menu with dishes such as prime aged steak fillet and seabass, along with vegetarian grills like cauliflower steak and grilled aubergine. Expect the sommelier to bring out some special bottles, to keep it fresh and interesting for regulars too.

To celebrate the reopening, the hotel has introduced a 'city centre sanctuary' package, where guests will be greeted with an immune-boosting green smoothie on arrival, and treated to a complimentary upgrade where available to a suite with a private entrance, making the hotel truly feel like a home from home.

Another perk of the package is access to the tranquil privacy of Cadogan Gardens over the road – normally exclusive to residents – where guests can exercise and read a book in the sunshine. Plus, all guests can take a complimentary class at KXU gym just off Pavilion Road, with options ranging from yoga and Paola's Body Barre to boxing and HIIT workouts.

*11cadogangardens.com*

### THE BELMOND CADOGAN

THE BELMOND CADOGAN at 75 Sloane Street reopened its doors at the start of August, at the same time welcoming a new general manager, Xavier Lablaude, from the brand's Cape Town hotel the Mount Nelson.

The decadent hotel where Oscar Wilde was famously arrested, which dates back to 1887, originally reopened under Belmond management after a multi-million pound refurbishment in February last year, with all 54 rooms finished to an incredibly high standard.

With luxury city staycations very much in mind after this summer's reopening, the hotel has launched a suite retreat package for those looking for a getaway without the stress of major travel.

Upon arrival, guests can expect to be greeted in the lobby with a Belmond-branded bag, handily filled with mini sanitiser, Bamford hand lotion and reusable mask – all of which are printed with a selection of illustrations designed by the owner's daughter, as an added personal touch.





RELAX IN THE BAR  
OR TAKE A STROLL  
IN CADOGAN PLACE  
GARDENS – THE  
BELMOND CADOGAN  
HAS SOMETHING  
FOR EVERYONE

In true suite retreat style, guests can really make the most of their spacious rooms with yoga mats provided for in-room sun salutations and Bamford amenities for taking a soak in the dreamy, freestanding tub. And as an extra bonus for those who love to bathe, each bath has a specially-designed champagne and book holder for some relaxation time with a book from the private libraries supplied by local bookseller, John Sandoe.

With buffets a thing of the past, breakfast is served al fresco on your private terrace, for those with a suite overlooking leafy Cadogan Place Gardens.

Dinner at Adam Handling Chelsea is a must, whether in the restaurant or slightly less formal surrounds of the bar and terrace. For something extra special, the team can arrange a picnic hamper to be taken across the road at Cadogan Place Gardens, where the coffee grounds from the hotel and other surrounding properties are used to fertilise the garden's stunning roses.

Or for those who fancy an exploratory stroll with some retail therapy down Sloane Street and through Duke of York Square, the picnic can also be enjoyed at Chelsea Physic Garden on Royal Hospital Road.

*belmond.com*

## *Other fabulous places to stay in Chelsea...*

**Bulgari**  
171 Knightsbridge

**The Draycott Hotel**  
22-26 Cadogan Gardens

**Hotel Costes**  
(coming in 2021)

**Jumeirah Carlton Tower**  
On Cadogan Place  
(reopens in December)

**Mandarin Oriental Hyde Park**  
66 Knightsbridge

**The Millennium Hotel**  
17 Sloane Street

**The Sloane Club**  
52 Lower Sloane Street

**The Sloane Square Hotel**  
7-12 Sloane Square

CHELSEA HAS ALWAYS ENJOYED A REPUTATION AS SOMETHING OF A MOVIE SET, WITH DIRECTORS MAKING THE MOST OF ITS CHARMING STREETS AND CHARACTERFUL HOUSES. CHARLOTTE PASHA AND ADRIAN DAY TAKE A LOOK THROUGH LOCAL CINEMATIC HISTORY

## 101 DALMATIANS

In the 1996 remake of Disney's classic starring Glenn Close as Ms DeVille, Roger and Anita get married at St Luke's Church in Sydney Street as a plethora of pups wait outside.

The church is no stranger to the silver screen, having also had a role in *Captain America: Civil War*.

## JAMES BOND

Ok, we don't know for sure, but 30 Wellington Square was where a friend of Ian Fleming, John Pearson, said James Bond lived. Fleming only refers to it as a 'little plane tree'd square off the King's Road,' but Fleming himself lived on Cheyne Walk and it was there that he started work on the first Bond novel, *Casino Royale*.

# Lights... sound... action!

## A CLOCKWORK ORANGE

A cult classic for Stanley Kubrick fans, it was at the Chelsea Drugstore – at 49 King's Road – where character Alex chatted up two girls in what was depicted to be a record store.

## A GOOD YEAR

Young Chelsea dwellers continue to flock to the Bluebird Café today, so will enjoy seeing its appearance in this Ridley Scott film.

## MATCH POINT

Not one of Woody Allen's best-known films, but in this movie starring Scarlett Johansson and Jonathan Rhys Meyers, the former, playing an actress, auditions for a role at Sloane Square's very own Royal Court Theatre.

## SKYFALL

James Bond theme composer, John Barry, lived at 82 Cadogan Square. As a nod to his contribution to the Bond legend, the home that M returns to to discover that Bond is still alive, is that same address. With Barry having died in 2011, the producers chose to honour him in this way.

## DOWNTON ABBEY

TV shows have flocked to Chelsea too. Parts of period drama *Downton Abbey* were filmed at the Royal Hospital Chelsea, for obvious reasons – its buildings and grounds are majestic. It's not the only show shot at the Royal Hospital – so were parts of *Churchill at War*, TV drama *The Split*, and even, bizarrely, a Compare the Market advert.





### WILDE

As we know, movies aren't always what they seem. Everyone knows of Oscar Wilde's connection to The Cadogan Hotel – but in the 1997 film *Wilde*, the hotel's facade was actually 2 South Audley Street.

### WITHNAIL AND I

Uncle Monty lives at 35 Glebe Place in this dark comedy, which was co-executive produced by Beatle George Harrison.

### ALEX RIDER: STORMBREAKER

Beloved by schoolboys everywhere, this film based on Anthony Horowitz's novel about a teenager working for MI6 shows protagonist Alex's house to be on St Leonard's Terrace.

### THE SERVANT

Dirk Bogarde gives a masterly performance as the sadistic servant of aristocrat Tony, played by James Fox.

Tony's house in the film is at 30 Royal Avenue, opposite the former home of Somerset Maugham.

In the opening shot, you can see the shop of 'Thomas Crapper, Sanitary Engineer', which was based on the King's Road opposite.

Thomas Crapper was a plumber specialising in toilets and bathroom fittings (plumbing fans will be delighted to know that he invented the ballcock).

REAL LIFE FILM STARS WHO  
HAVE PUT IN AN APPEARANCE



**PL Travers**

The author Helen Lyndon Goff (who was born in Queensland, Australia) gave us *Mary Poppins* and has a Blue Plaque to prove it at 50 Smith Street. The film *Saving Mr Banks* tells the story of her selling the rights for Walt Disney to make their famous film – so she could afford to stay in the house she loved.



**Sir Carol Reed**

The film director, best known for *The Third Man* and *Oliver!* Died at his home at 213 King's Road in 1976.



**Boris Karloff**

Famous for his *Frankenstein* portrayals in the early 1930s, Boris moved to 43 Cadogan Square in 1959 – the square was also to be home to that other master of the macabre, Sir Christopher Lee.



**Laurence Olivier**

Larry moved to 74 Cheyne Walk in 1933. He later lived at Durham Cottage, 4 Christchurch Street with Vivien Leigh. It was their London home until 1956.



**David Bowie**

The Man who fell to Earth lived at 89 Oakley Street when he was plain old Ziggy Stardust.



**Joseph Losey**

Blacklisted in the USA during the McCarthy era, the director and producer settled in Europe. Three films with screenplays by Harold Pinter: *The Servant*, *Accident* and *The Go-Between* which was awarded the Palme d'Or in 1971, are stone cold classics.



**Judy Garland**

Judy married her fifth husband Mickey Deans at the Chelsea Registry Office in 1969 and stayed for a while in Cadogan Lane until her untimely death there.



**Dirk Bogarde**

One of the world's finest film stars starred in films including *The Blue Lamp* in the early 1950s, before twice winning BAFTAs for Best Actor in a Leading Role (*The Servant* and *Darling*) in the Sixties. *Death in Venice* in 1971 was another highlight. His autobiographical book *A Short Walk From Harrods* tells of his final years living at 2 Cadogan Gardens.



**DNA**  
CINEMAS

# Experience films like never before

Professional standard home cinemas bring a whole new level of excitement, intensity and luxury to watching films, gaming and sport.

Enjoy the unique experience of perfect sound and vision that takes cinema to the very limits for the whole family to enjoy the full intensity of the immersive experience. We offer the full design and build service to transform a room into a finished home cinema.

**DNA Cinemas**

Creating unique home entertainment spaces

23 Berkeley Square, Mayfair, London W1J 6HE

[www.dnacinemas.com](http://www.dnacinemas.com)

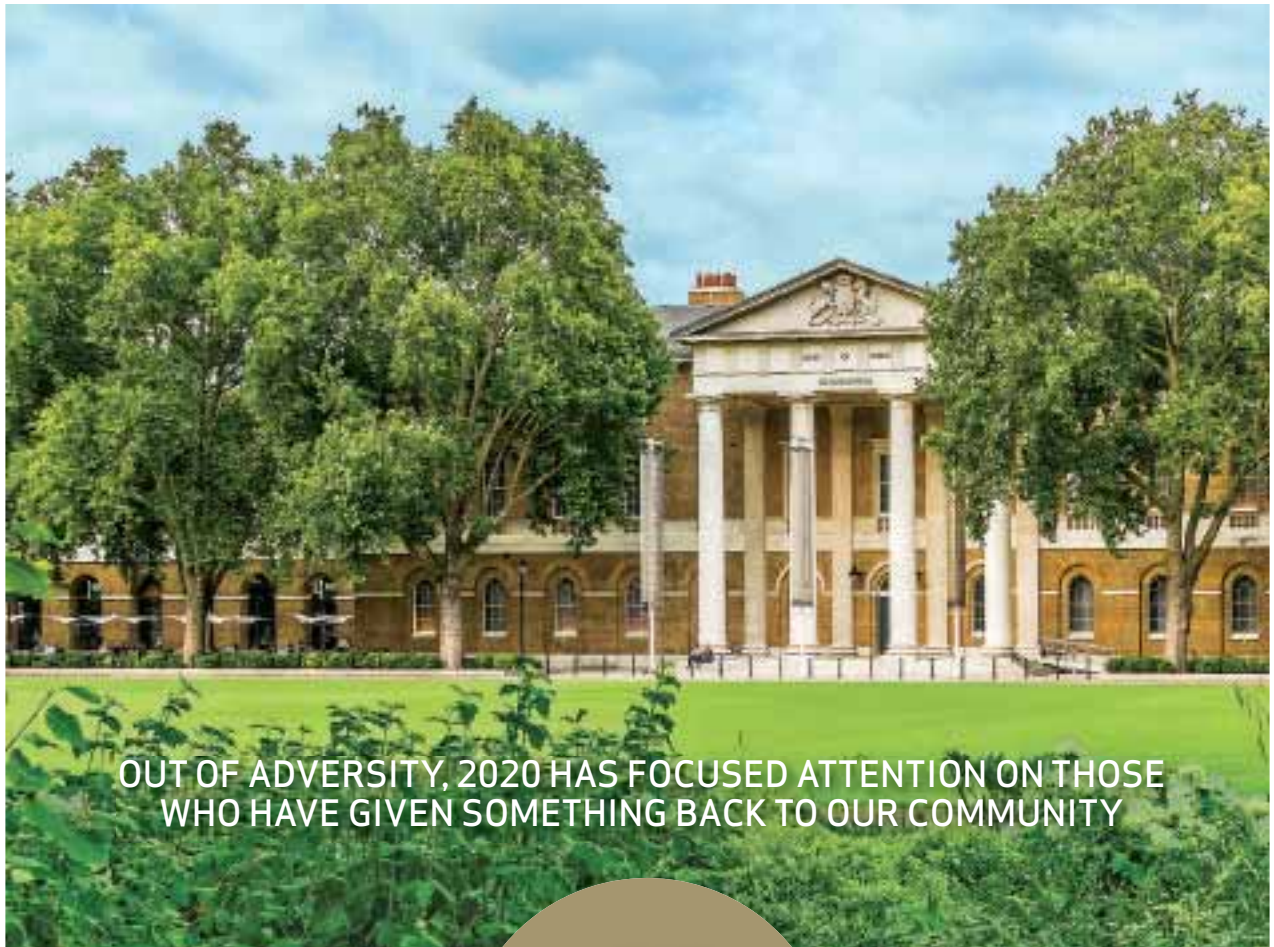
0207 129 1265



## THE INTERIOR DESIGNER'S EYE. THE CLIENT'S VISION

I never forget that my clients aspire to live in a real home, not a show home. With empathy and flair, I blend recycled antiques with new, striking pieces to create perfectly imperfect interiors.

INFO@ANAENGELHORN.COM · ANAENGELHORN.COM · INSTAGRAM @ANAENGELHORN



OUT OF ADVERSITY, 2020 HAS FOCUSED ATTENTION ON THOSE WHO HAVE GIVEN SOMETHING BACK TO OUR COMMUNITY

## THE *CHELSEA* AWARDS

AFTER THE SUCCESS OF the inaugural Chelsea Awards last year, we are forging ahead with plans for the second ceremony, due to be held next March. Now, more than ever, seems the time to be championing our community.

Chelsea has never rested on its illustrious history and is constantly evolving to make it as vibrant, engaging and useful to today's residents and visitors as it was a century ago.

Some change is forced upon us as we adapt to new environments and conditions but

those that embrace change invariably thrive and offer inspiration to others.

The awards celebrate all that we are as a mutually supportive community so here is your chance to champion your favourite local haunts, from artisans and small businesses to shops and restaurants and even those admirable local individuals who have thought of others before themselves during these testing times.

It's a true celebration of the individuals and collaborations that make up our community,

# Community / The Chelsea Awards

enhancing everyday life by going the extra mile, and the evening itself brings everyone together with true Chelsea spirit.

We are proud to be sponsored by Cadogan, Knight Frank, Cripps Pemberton Greenish, Ineos, the Belmond Cadogan Hotel, Ted's Grooming Room and Poliform UK and will be announcing further sponsors in due course.

In the following pages we chat to Knight Frank's Harry Dawes and Arya Sallari. Both work in the heart of Chelsea, so understand just what it is to be a part of this special place.

To nominate a person or organisation that you think helps to make Chelsea a truly wonderful and vibrant place, simply go to [chelseaawards.com](http://chelseaawards.com)

JOHN SANDOE'S TEAM WITH THE ONLY IN CHELSEA AWARD IN 2019



## AWARD CATEGORIES

### ONLY IN CHELSEA

A business that brings something unique to the area

### COMPASSION IN A CRISIS

An individual or business that has adapted and served the community during the Covid-19 pandemic

### IN GOOD TASTE

Someone who has made Chelsea more delicious

### MASTERS OF CRAFT

An artisan who elevates the everyday to the extraordinary

### COMMUNITY HERO

An organisation or person that has benefited the community through their actions

### CULTURAL CHAMPION

An organisation or person that has enriched Chelsea's culture

### COMMUNITY COLLABORATION

Businesses that have joined forces for the greater good

### FUTURE FORWARD

A company innovating to meet tomorrow's challenges

Please make your nominations by visiting [ChelseaAwards.com](http://ChelseaAwards.com)



**Poliform**



**INEOS**



Glass Door is a registered charity  
(No. 1083203) in England and Wales.

# GLASS DOOR SLEEP OUT (OR IN) 02 OCT 20 the choice is yours

## one event, many ways to get involved

Local charity Glass Door provides shelter and support to move beyond homelessness. Its annual Sleep Out event plays an important role in raising funds and awareness. This year, live-streaming elements will make it easy to participate and stay connected from a location of your choosing.

**Sign up, sleep out (or in) and help someone end their chapter of homelessness.**

To find out more visit [GLASSDOOR.ORG.UK](https://GLASSDOOR.ORG.UK), call 020 8016 6825 or email [sleepout@glassdoor.org.uk](mailto:sleepout@glassdoor.org.uk).

**GLASSDOOR**

CHARITABLE GIVING IS PART OF KNIGHT FRANK'S DNA – IT RAISES THOUSANDS OF POUNDS THROUGH VARIOUS FUNDRAISING ACTIVITIES. SO, AS AN AGENT IMMERSSED IN THE LOCAL COMMUNITY, IT'S NO SURPRISE THAT IT IS ONCE AGAIN A HEADLINE SPONSOR OF THE CHELSEA AWARDS. BY ADRIAN DAY

# *Acts of* KINDNESS

WINNERS  
FROM  
THE 2019  
AWARDS





RIGHT:  
GETTING  
READY  
FOR A  
BEACH  
CLEAN ON  
KNIGHT  
FRANK'S  
DAY OF  
GIVING

WHEN IT COMES to being a part of Chelsea, Knight Frank knows as much as anyone. It has been around for decades and has two offices in the area.

Harry Dawes, partner at the Sloane Avenue office has been around a while too, as he has been working in Chelsea and Knightsbridge since 2003.

“We are lucky, in that we have an enormous amount of interaction with our clients and customers,” he says.

“I walk everywhere, where possible – when walking from one meeting to another, it’s highly unlikely that you won’t bump in to someone you know. And that’s something that we encourage our whole team to do – if you immerse yourself in your community you can serve them better, people know you.

“Anna Narizzano, in my team, once made a first contact with a lady who was struggling with her shopping – that was just an act of kindness – but a couple of years later that lady became a client. It’s sometimes small acts of kindness that stick in people’s minds so we always try to remember that.”

It’s that sense of community that has driven Knight Frank to be a headline sponsor of The Chelsea Awards for a second time after the inaugural awards in 2019.

“We are properly embedded in our community,” says Dawes.

“We can’t rely on the big name above the door – it’s about truly local knowledge and engagement. We want to do things that are substantial and meaningful.



“IF YOU IMMERSE  
YOURSELF IN YOUR  
COMMUNITY YOU CAN  
SERVE THEM BETTER,  
PEOPLE KNOW YOU”

*Harry Dawes*

“That also manifests itself through Knight Frank’s Day of Giving and also in the Partners in Property initiative that we have.”

For those who have been snoozing at the back, the Partners in Property initiative promotes Knight Frank not just an estate agent for one transaction, but as a partner for all their clients’ property needs – be that commercial, residential, international or on the advisory side of the business.

Dawes continues: “You can really see where Cadogan has made investments into the area, the public realm and maintaining and promoting Chelsea.

“There is such a difference compared to some other areas. We are seeing plenty of people who are based elsewhere wanting to come further south towards Sloane Square – and that is built to some extent on the back of investment in Pavilion Road. All these things increase the value of an area. I hear things like, ‘we love Pavilion Road, we’re there every weekend. It’s got everything... butchers, fishmongers...’

“It might seem like a tooth-sucking moment when they are investing that kind of money but the payback in terms of desirability of the area and diversity of international wealth is very forward thinking. It’s a community investment that gives a sense of place and a heart to the area – it’s just very well thought out.

“I love the atmosphere around Duke of York Square, especially right now when many people want to eat outside. It’s almost got an Italian piazza feel. If you walk down King’s Road at the moment it’s full of people – there’s a considerable residential community in this area – it’s busy, far more so than places like Mayfair.”

Dawes’ colleague Arya Salari is an associate at Knight Frank and lettings manager in the Chelsea residential team working in the King’s Road office. He says: “The Chelsea Awards were such a great idea and we are so pleased to be involved in this leading role for a second time.

“It is particularly important to celebrate our local communities at this time and

“WE ARE ON THE CORNER OF BEAUFORT STREET. CHELSEA PARK GARDENS IS ON OUR DOORSTEP AND PEOPLE TEND TO KNOW EACH OTHER. THIS IS OFTEN THEIR PRINCIPAL HOME, WHICH ISN’T ALWAYS THE CASE IN OTHER AFFLUENT PARTS OF LONDON”

Arya Sallari



Knight Frank is grateful to be able to contribute in this way.

“I’m based on King’s Road – I know it is a cliché – but it really does have the spirit of a village. During the past few months, we’ve all had a chance to see that important human element – people in businesses and residents alike.

“It’s amazing how communities have different characteristics – even three or four streets can change the overall make-up of the community. That’s why we are so fortunate to have the two offices in Chelsea. I’d say that that’s what Knight Frank is – across the world but also around the corner – and that specialised local knowledge is invaluable.

“I took an instruction from someone the other day and she said to me, ‘oh I walk past you every day’ – it’s that sort of thing – and we are a part of it.

“We are on the corner of Beaufort Street. Chelsea Park Gardens is on our doorstep and people tend to know each other. This is often their principal home, which isn’t always the case in other affluent parts of London.”

Sallari tells a heartwarming story of a recent experience where he was able to rent a home at way under the market rate as the owner knew the prospective tenant worked in the NHS. “I think we’ve all had the feeling that we should be looking out for others in the community – even when we go on appointments we are all just having an eye to check that others in the building are ok,” he says.

And, despite media reports, the Chelsea market, particularly family houses, has never been more buoyant, he says.



“Chelsea has really shown what extra it has to offer during lockdown – I had one family who have moved here and the customer (who moved from Mayfair) said, ‘look, outside in Mayfair it’s dead’. In Chelsea the area has remained vibrant and the streets are full of life.

“I even recently had an enquiry from three students at Harvard who, as things are being done virtually at present, were moving to Chelsea for a while, while still studying at Harvard. That’s something different! But wherever you work, the green space around here is very attractive for people in flats.”

KNIGHT  
FRANK'S  
KING'S  
ROAD  
OFFICE

## KNIGHT FRANK'S DAY OF GIVING

Held every two years, The Day of Giving 2019 raised £250,000 in the UK that was shared by five charities. Just some of the fundraising activities undertaken by Knight Frank teams across the UK included a ‘One Million Footsteps in a day’ challenge, cycling across the UK, the Lake District 10 Peak circular route challenge, abseiling 300ft down the face of a Spitalfields building, a beach clean, a ‘big sing’ choir event, film screenings and bake sales.

# Charity / K+C Foundation

SLOANE SQUARE / SEPTEMBER 2020

# Give where you live

SPEAR, ONE OF THE PROJECTS SUPPORTED BY THE K+C FOUNDATION, HELPS YOUNG PEOPLE INTO EMPLOYMENT

THE K+C FOUNDATION is an independent charity supporting impactful local projects that improve the lives and life chances of some of the most disadvantaged and vulnerable residents in our borough.

It is currently raising funds to support local projects which transform young lives, especially those affected by educational inequality, lack of opportunity, lack of access to outdoor spaces, poor physical health, gangs, poor mental health, loneliness or disability.

**Thanks to the K+C Foundation, young people like Fawzia, age 15, have better access to education and opportunity.**

Fawzia lives below the poverty line and shares a small, two-bedroom flat with numerous younger siblings, her mother and extended family. Her father was the main breadwinner but sadly passed away a few years ago, leaving the family in extreme financial difficulty.

Mental health issues and low self-esteem led Fawzia to feel that she was failing at school and unable to cope. Due to the living conditions, Fawzia found it impossible to study at home and



## IN THIS BOROUGH 37 PER CENT OF CHILDREN LIVE IN POVERTY

fell even further behind at school.

Fortunately, The K+C Foundation supports a project in North Kensington for disadvantaged young people who are unable to study at home due to lack of space and digital access.

The young people are offered nutritious hot meals three times a week and encouraged to stay, use the computers and complete their homework.

Fawzia attended these sessions and the impact has been remarkable. Her mental health improved, she stopped self-harming and her self-esteem was noticeably better. After just three months, Fawzia's core subjects improved by two grades.

*If you would like to donate and support young people like Fawzia please get in touch at [team@theandcfoundation.com](mailto:team@theandcfoundation.com) [theandcfoundation.com](http://theandcfoundation.com) Registered Charity Number 1125940*

***"This project has been hugely beneficial for Fawzia – we've seen a real transformation, both in terms of her grades but also in her wellbeing and engagement in school life. She is a very capable girl and this has given her the boost she needed to really thrive and achieve her potential despite the many disadvantages she faces"***  
*Headteacher at Fawzia's school*

*Kensington  
+Chelsea  
Foundation*  
A better life together



CARPENTRY  
ELECTRICAL  
PLUMBING & DRAINAGE  
LOCKS, DOORS & SHUTTERS  
SHOP FITTING  
ROOFING  
WASTE REMOVAL  
PEST CONTROL  
GLAZING  
CHANDELIER MAINTENANCE  
CLEANING SERVICES  
COVID ELECTROSTATIC DISINFECTING SERVICE



**0203 318 5771**

**WWW.LUXURYMANTENANCESERVICES.CO.UK**  
**SERVING LONDON AND THE HOME COUNTIES**

---

# Hospital *helpers*

THROUGH CW+ VOLUNTEERS ARE GOING THE EXTRA MILE TO HELP ON AND OFF THE WARDS AT CHELSEA AND WESTMINSTER HOSPITAL. SOPHIA CHARALAMBOUS HEARS HOW

**REBECCA TAYLOR AND PLACE SUPPORT WORKER KATIE MACKINNON**

Hospital Youth Worker Rebecca Taylor and Place Support Worker Katie Mackinnon have been working on the Covid paediatric ward and supporting CW+, the official charity of Chelsea and Westminster Hospital during the pandemic

**Rebecca:** We usually work on the paediatric ward – so I work with teenagers and Katie works with younger children. We were assigned to the Covid paediatric ward and, thankfully, there weren't that many Covid-positive children at all so we needed other things to do. We asked if we could move to any other wards, and they said, 'not at the moment'.

Then we heard that the charity needed some help. The charity has been so good to us – they've helped us with projects and getting us equipment, so we just wanted to

help them out. We made sure the wellbeing spaces for staff were stocked with toiletries, snacks, hot drinks.

**Katie:** In the cinema there were just so many donation boxes everywhere – you couldn't move.

**Rebecca:** I'm a bit of a geek and I love sorting and organising so I was like, amazing, leave it to me. We had hundreds of bags of clothes, so we were labelling them with different sizes. It was really fun. Katie did a lot of the heavy lifting. She was missing the gym.

With helping the charity there's been less patient contact, I kind of feel as though we haven't seen the half of it really. We've heard a lot of things but we've been out of the main Covid situation other than being on the ward with the young people.

**Rebecca:** A lot of nurses on our ward got moved up on to the adult Covid ward so we were just checking in with them to see if they were okay, too.

“YOU CAN SAY AS MUCH AS YOU CAN WITH YOUR EYES BUT WHEN YOU'RE TRYING TO REASSURE PEOPLE AND THEY CAN'T SEE YOUR FACE IT FEELS QUITE SAD AT TIMES”

*Rebecca Taylor*

# People / Local heroes

SLOANE SQUARE / SEPTEMBER 2020



**Katie:** I'm very nervous. Because we work on a Covid ward we did have a few patients – not many – but, because I've got children, I just thought 'oh God'. But what I did was shower every night before I left, left my shoes, my uniform would be in a separate bag, and that would go in the washing machine straight away. .

**Rebecca:** Where we work now isn't technically a Covid ward, but it's a pending ward, so people will come in there first. If they're positive, they stay on the ward and if they're negative they'll move to a different ward. With PPE, I think things will stay like this for at least another year or so.

Trying to engage with young people and for them to not be able to see your facial expressions properly is tough. You can say

as much as you can with your eyes but when you're trying to reassure people and they can't see your face it feels quite sad at times.

**Katie:** I'm kind of a very happy person. I try and not let things get on top of me.

**Rebecca:** Because we've been coming to work every day we haven't had the full lockdown experience so things don't seem that different.

**Rebecca:** I want to help the charity rather than sitting around twiddling my thumbs. Some people are doing so much more than unpacking boxes and making sure people get stuff.

**Katie:** It's part of our nature that we would do this. I wouldn't say that we're heroes, but we want to do it. We want to be able to help people.

KATIE MACKINNON, LEFT, AND REBECCA TAYLOR, RIGHT, WANT YOU TO KNOW THAT THEY ARE SMILING UNDER THERE!

## People / Local heroes

### DARREN THOMPSON

Darren Thompson is a volunteer with CW+, the official charity of Chelsea and Westminster Hospital NHS Foundation Trust, working throughout the height of the Coronavirus pandemic

I USED TO BE A VOLUNTEER ON THE CHILDREN'S WARD, then Covid-19 came along and I started almost the first day. I was looking after the sleep pods there. I came back on Monday morning and they were in disarray. Things weren't cleaned so I thought, okay, I have to work the weekends too, so I ended up doing 71 days in a row. But it was great – it was like having a new family.

We got 360 food bags every morning, from Monday to Friday, 400 bags at the weekend, and so we delivered those to the wards. In

“THE MOST REWARDING  
THING IS JUST SEEING  
PEOPLE SMILE IN  
A REALLY DARK  
ENVIRONMENT.  
PEOPLE MAKE JOKES  
AND MAKE LIGHT OF  
THINGS. I JUST FEEL  
LIKE I'VE HELPED OUT”

*Darren Thompson*

the bags we had a brownie, pasta salad, a bag of crisps, some fruit. The community really pitched in, especially in Chelsea – the amount of donations that we got from the likes of Chinese restaurants, pizza places, Nando's – the staff love Nando's – if you walk around with Nando's you're everyone's best friend.

Before Covid, I knew just a couple of the children's wards that I worked on, but with food deliveries I went to every ward.

A typical day started at 9am but I'd get there half an hour earlier, and involved delivering water to ICU, theatre and A&E, then I'd wait for the food bags which normally came about quarter to nine – we'd load up two big cages of breakfast bags – and we'd take





them to all the wards, slowly.

We'd do a pharmacy run, check if medication needed to be delivered. By that time, it would be lunchtime so we would deliver lunch food and finish at 1pm. I was averaging 16,000 steps a day. I'd then go home and self-isolate because I live by myself.

For me it was an escape as well – my family lives in Canada, and I don't have anybody here, but you know, the hospital staff became my family. It's really quite special.

Even the volunteers – we had a lot of young ones – 16 and 17-year olds stepping up like that, it's incredible. You think of the youth like they're doing this wrong and that wrong but not there.

I get a pat on the shoulder, stuff like that, and it makes you feel needed and it's nice to feel needed. I worked in hospitality for 30 years. The only thing I miss was serving them cocktails which you can't do there!

It's just about giving back. I don't make much money so I can't give donations, but I have enough time. I used to chef and bartend for an agency. But since lockdown there's no cheffing or bartending, so why not? I'd just be sitting at home watching movies and probably getting fat.

The most rewarding thing is just seeing people smile in a really dark environment. People make jokes and make light of things. I just feel like I've helped out. A lot of nurses and doctors couldn't leave the wards.

I was not the one who was looking after all these patients, who were really in danger in a sense. They stepped up, they put their life on the line, but that's what they do and I could, at least, feed them.

I feel a bit funny about being called a hero in a sense. I just think I'm a person who wants to look after others. I said I worked in hospitality all my life and I like looking after people. I don't think just because of that I'm a hero. Maybe I'm just a really nice guy.

We need ward volunteers. A lot of people don't have family. And just sitting talking to patients, especially the older patients – they just want to talk – they had incredible lives, they just want someone to listen. We have a lot of hate in the world so we need a balance – we need good people to balance out the negativity.



**CW+ HAS AN ARTS TEAM** that strives to improve patients' quality of life and experience in hospital.

A recent initiative has been to stage a series of live concerts, delivered virtually via Zoom to intensive care patients.

CW+ music and sound research consultant Andy Hall played a variety of music on his piano at home for the performances which were held one-to-one in the newly-refurbished Intensive Care Unit (ICU) at Chelsea and Westminster Hospital.

The music sessions offer patients a chance to relax and be distracted from their surroundings and situation with no disruption to their medical care.

Sue, pictured above, who was fortunate to be leaving the unit for another ward immediately after the concert, said: "The music really brightened up my day, and Andy was amazing, very talented and pleasant!"

# OPENING SOON

Located in the heart of London's most prestigious Royal Borough, the newly refurbished Forty Five Kensington offers a dining and gaming experience that sets new standards in style and sophistication.

Sample the delights of our luxurious new restaurant, offering fine dining with an inspiring menu of dishes from around the world. Equally as impressive as the menu is the level of service, with our team of highly trained staff attending to your every need.

After your meal, enjoy a drink in the relaxed surroundings of our elegant bar or experience the excitement of the Kensington Gaming Floor, where you'll find all your favourite table games and state-of-the-art electronic gaming machines.

Whether you're a discerning gamer wanting to take your skills to the next level, or simply looking to enjoy an evening of first class dining and entertainment, Forty Five Kensington promises to go above and beyond every expectation.

No membership required, over 18s only

 **FORTY FIVE**  
K E N S I N G T O N

Forty Five Kensington,  
45 Cromwell Rd,  
South Kensington,  
London SW7 2EF

+44 (0)20 7589 4041

[www.fortyfivekensington.co.uk](http://www.fortyfivekensington.co.uk)



BeGambleAware.org®



Over 18 only





# Do you talk to your neighbours?

*Every issue 30,000 copies of Sloane Square keep local residents and businesses informed of what's happening locally*

*You too can speak to them simply by advertising*



Increase profitable footfall  
Generate more sales  
Gain a competitive advantage

Call Adrian Day on  
020 7259 1053  
email him on [day@pubbiz.com](mailto:day@pubbiz.com)  
or visit [pubbiz/sloane](http://pubbiz/sloane)

## THE DE-STRESS

**MASSAGE** at Bamford's urban wellness hub concentrates on easing muscle tension on the back of the body by working on Shiatsu pressure points – using gorgeously-scented Bamford oils, of course.

The relaxing treatment starts with an Epsom salt bathing ritual for the feet, followed by a Swedish back and leg massage to boost circulation and finishes with reflex work on the feet.

The treatment costs from £120, and clients are asked to sign a Covid safety questionnaire prior to entering the spa premises.

*104 Draycott Avenue*



## ALL OF TED'S GROOMING ROOM'S

services resumed mid-August, so gents can once again indulge in the Full Ted (from £56) – a traditional Turkish barbering experience with a cut-throat shave or beard design, haircut, hot-towel treatment, massage and ear flaming, if required. For a fully-groomed look, brow threading can be added for £14.

The barbershop has implemented enhanced hygiene procedures, put up protective glass screens and masks are available for those who require them.

*136 King's Road*

## Beauty / News

### IT IS SAFETY FIRST AT NEVILLE.

The salon is taking the temperature of all clients on arrival, handing out fresh masks and wrapping clients' belongings in plastic coverings, as well as limiting the number of people visiting the salon.

The team recently held a charity day, where all the stylists gave up their Sunday to treat local NHS frontline staff to complimentary haircuts and a spot of much-deserved pampering.

*5 Pont Street*



SALON SLOANE is back to rescue lockdown locks, with a much-needed cut,

colour and the salon's signature hair filler conditioning treatment.

Clients can expect to sanitise their hands upon arrival, put on their own gowns, pay using contactless payment and the salon is disinfecting tools between clients with a hospital-grade sanitiser.

A cut and blow-dry with stylist Belle Cannan costs £150 for men and £250 for women. However, the salon is pleased to offer *Sloane Square* readers 25 per cent off all services on presenting a copy of this magazine during September and October.

*186 Pavilion Road*



LOCAL RESIDENT CHARBEC offers reflexology from both her home treatment space and KX gym. Qualified in both foot and facial reflexology, every session is a holistic experience using crystals, essential oils and burning incense such as palo santo wood to create a healing atmosphere for mind and body.

An hour of reflexology focuses on the feet, while Charbec's signature – the zone facial – combines work on the feet with an anti-aging facial targeting acupuncture points.

Clients booking a treatment at Charbec's home can relax knowing they won't come into contact with anyone else. Sanitising wipes are provided and Charbec wears necessary PPE.

*Oakley Street and 151 Draycott Avenue*





SARAH CHAPMAN, the world-class Skinesis clinic, is back open offering a full treatment menu, with a host of Covid-secure measures in place including use of disposable linens, weekly specialised deep cleans and sterilising between clients.  
*259 Pavilion Road*

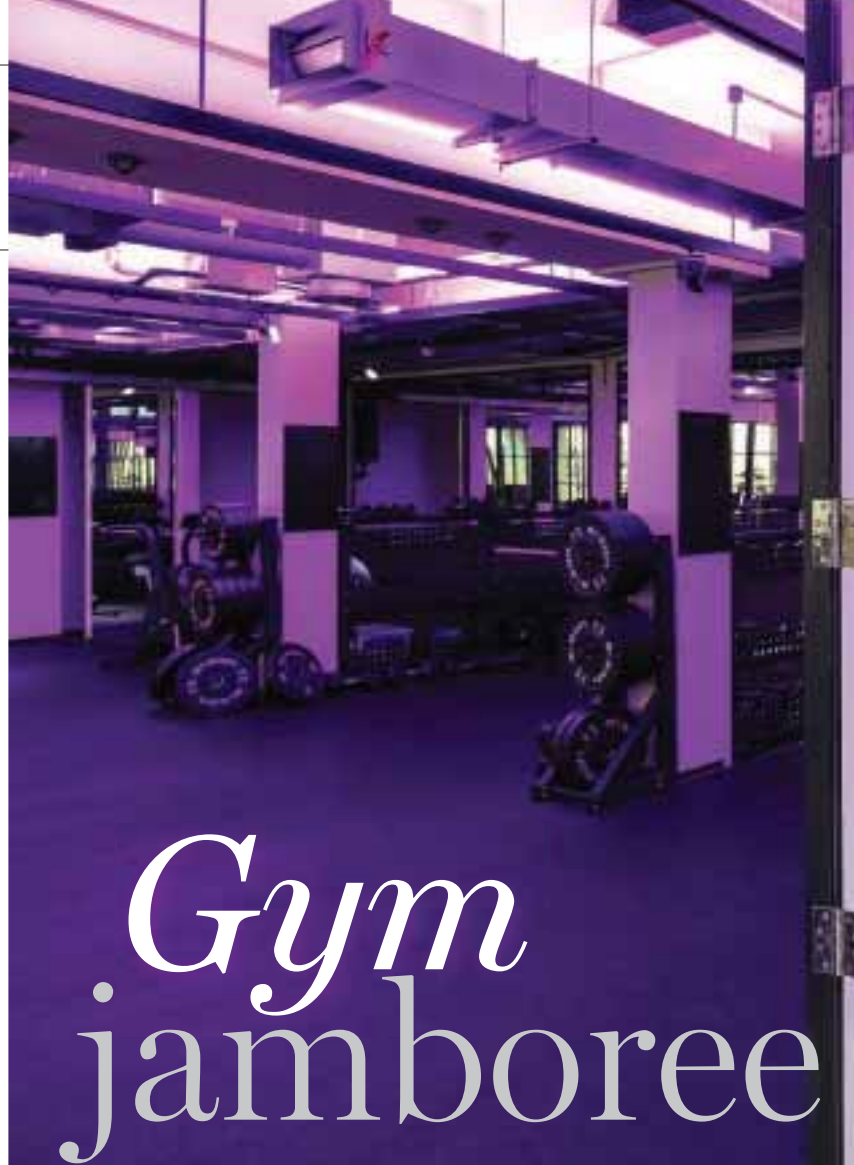
DERMALOGICA is offering two services in the downstairs treatment area – face mapping and the longer Pro60 facial.  
*37 Duke of York Square*



---

**CORE COLLECTIVE**, Jason de Savary's Chelsea gym adapted to Covid quickly, setting up an online workout programme, CCTV, and running outdoor classes. Happily, these are continuing for those on holiday or unable to visit the studio. But those who are keen to get back inside the luxury gym will be pleased to know that the studio is open with enhanced safety measures including reduced class capacity, floor markers, regular deep cleans throughout the day and air replaced in the studios every 10 minutes.

"We have always prided ourselves on the cleanliness of our studios, but strict additional measures will ensure clients feel fully comfortable," said de Savary. As an added incentive, the Fresh Start pack allows both new and old members to try classes such as Cycle, Circuit, ROW, Power Yoga, Pilates, TRX Sculpt and TRX Burn from £12.50 per class.  
23 Pavilion Road



## AS FITNESS STUDIOS GET BACK IN ACTION WITH NEW AND IMPROVED SOCIALLY-DISTANCED PROTOCOLS, WE REPORT ON WHERE TO WORK UP A SWEAT WHILE FEELING CONFIDENT AND SECURE



**THE POPULAR PAVILION ROAD KXU** studio has reopened, with instructors keen to be back training clients. Upon arrival, every client has a temperature scan as a safety precaution, studio capacity has been reduced with clear markers within the studios and equipment thoroughly cleaned in between every session.

For those looking to maximise their visit, the gym's Medispa is also back open within the same building, reducing contact for those looking to treat themselves after a workout. The spa team are fully equipped with PPE, which is changed after every client, and spa bookings are staggered to ensure there is room for social distancing in reception.

The gym's KXU on demand service will also continue to run for the foreseeable future.  
241 Pavilion Road



## *Fitness / Gyms*

SLOANE SQUARE / SEPTEMBER 2020



CORE COLLECTIVE

**THE LIGHT AND AIRY YOGA SPACE** at Daylesford founder Carole Bamford's Chelsea wellness haven is the perfect spot to unwind mentally and physically with a de-stressing yoga class. The indoor studio is now running a reduced timetable with limited class capacity, and yogis are asked to fill out a Covid safety form before arrival on site.

The holistic classes encourage participants not just to move, but to breathe and disconnect from the stresses of urban living.

*104 Draycott Avenue*



**THE PERSONAL TRAINING** fitness space at Urban Retreat at the White House embraced the concept of social distancing long before it was a thing. The boutique PT gym allows clients to work out with head trainer Divan Kombrink one-on-one in total privacy.

The space is also home to a high-tech Car.o.l spinning bike, a HIIT-based machine that can provide a thorough cardio workout led by a trainer in just 10 minutes.

PT sessions with Divan cost £150 per hour, and slots on the Car.o.l bike cost £45 for 20 minutes.

*2-4 Hans Crescent*



# My Chelsea / Adam Handling

SLOANE SQUARE / SEPTEMBER

## WHAT'S NEW OR SEASONAL ON THE MENU AT THE MOMENT?

I'm looking forward to grouse season in Autumn. We serve them on the bone with roasted hazelnuts and blackberries – delicious.

## HOW IS YOUR PASSION FOR REDUCING FOOD WASTE IMPLEMENTED AT THE HOTEL?

Any food offcuts that can't be used in the kitchen are collected for composting, which is available for use in Cadogan Place Gardens. Food suppliers have to deliver their goods in recyclable cardboard and there are no cut flowers used for display, only living potted plants and herbs.

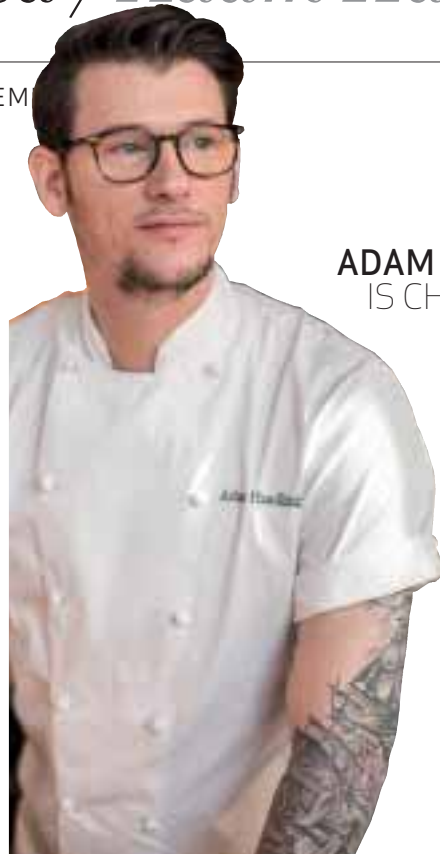
What is your favourite...

## BOTTLE AT THE BELMOND BAR?

I'm an ambassador for Krug, so it would be silly for me to not get excited over the amazing Krug library we have. We have some really unique bottles that are incredibly hard to find.

## DISH ON THE MENU?

If I'm sitting in the bar, it would have to



**ADAM HANDLING** IS CHEF/OWNER OF ADAM HANDLING CHELSEA AT THE BELMOND CADOGAN

a beauty to drive and it's ultra-low emission.

## PODCAST?

I was lucky enough to be on *Chef's Night Out* the other week – the guys are hilarious. *Off Menu* is another favourite.

## BOOK?

*The Gruffalo*, read with my boy, Oliver.

## FILM?

*Braveheart* gets me teary at the end, every time! *Shrek* has to be my guilty pleasure, though.

## PLACE IN CHELSEA?

Pavilion Road – there's something quaint about it that I absolutely love, and the idea of a completely edible street is amazing. I would love to live there one day. Personally, I think there should be more roads like this in London.

## MOTTO OR WORDS OF WISDOM?

We've always opened my restaurants by this motto: 'We want to create the favourite restaurant in the area, not the best in the world.'



be Mac and Cheese. If I'm in the restaurant, it would have to be my 'Mother' dish. The night before my launch, my mother phoned me to let me know she was a vegetarian, so I had to quickly create a dish she could eat. I put this together and it's been a guest favourite ever since.

## MEAL TO COOK AT HOME?

Wagyu ramen – it's super simple to make and unbelievably delicious. I made it so much during

Clockwise from top: Adam Handling; *The Gruffalo*; BMW i8 Roadster; and the Belmond Cadogan bar

the lockdown, so I added it to Hame, my home delivery service.

## HOLIDAY DESTINATION?

Thailand, every time. The food is incredible, the people are amazing, the culture is wonderful.

## CAR?

I love my car so much – it's a BMW i8 Roadster,





### DRAYCOTT PLACE, CHELSEA SW3

**A**n extremely grand newly built house in Chelsea, finished to an exceptionally high specification, behind a front facade retention. Arranged on seven floors, all of which are served by a spacious lift, full air conditioning, generous entertainment space and leisure facilities.

5 BEDROOMS | 5 BATHROOMS | 4 RECEPTION ROOMS | CINEMA  
UTILITY ROOM | GYM | SPA FACILITIES | GARDEN | APPROXIMATELY 5,577 SQ FT | EPC C  
0.4 MILES TO SLOANE SQUARE UNDERGROUND STATION



Guide price £12,950,000 Freehold

Knight Frank Knightsbridge  
harry.dawes@knightfrank.com 020 4502 7491

[knightfrank.co.uk](http://knightfrank.co.uk)



CAMERON VALE SCHOOL  
DA MIHI SAPIENTIAM



THE CHELSEA NURSERY  
DA MIHI SAPIENTIAM

**A First Class Education in a Nurturing Family Environment.**



For further information on Cameron Vale School and The Chelsea Nursery,  
please contact the Admissions Office.

020 7352 4040 | [admissions@cameronvaleschool.com](mailto:admissions@cameronvaleschool.com) | 4 The Vale, London SW3 6AH

[www.cameronvaleschool.com](http://www.cameronvaleschool.com) | [www.thechelseanursery.com](http://www.thechelseanursery.com)

