



WAIKOUAITI COAST COMMUNITY BOARD COMMUNITY PLAN

ADOPTED DECEMBER 2022



DUNEDIN | kaunihera
CITY COUNCIL | a-rohe o
Ōtepoti

dunedin

CONTENTS

	Page No.
SECTION ONE	
Introduction	4
SECTION TWO: KEY INFORMATION	
2.1 Background	4
2.2 Board Members and their Contact Details	6
Community Board Meeting Schedule	6
2.3 Map of Community Board Area	7
2.4 Our Community	7
SECTION THREE: PRIORITIES FOR OUR COMMUNITY	
3.1 Current Priorities	8
3.2 New Priorities	10
SECTION FOUR: COMMUNITY BOARD ACTIVITIES & ASPIRATIONS	11
SECTION FIVE: PLANS & SCHEDULES	
5.1 Emergency Plan – Community Board Response Plan	21
5.2 Discretionary Funding	23
5.3 Community Engagement	27
5.4 Rooding Schedule	28
SECTION SIX: COMMUNITY OVERVIEW	29

1 INTRODUCTION

This Community Board’s Community Plan summarises the needs and priorities of the communities within the Waikouaiti Coast Community Board area for the 2023/24 financial year, and the Dunedin City Council’s (DCC) 2021-31 10 Year Plan. Its primary objective is to signal to the DCC those priorities for our community, with the ultimate goal that they are programmed into the DCC’s 10 Year Plan and funded by the DCC. These priorities are shown in section 3 of this plan.

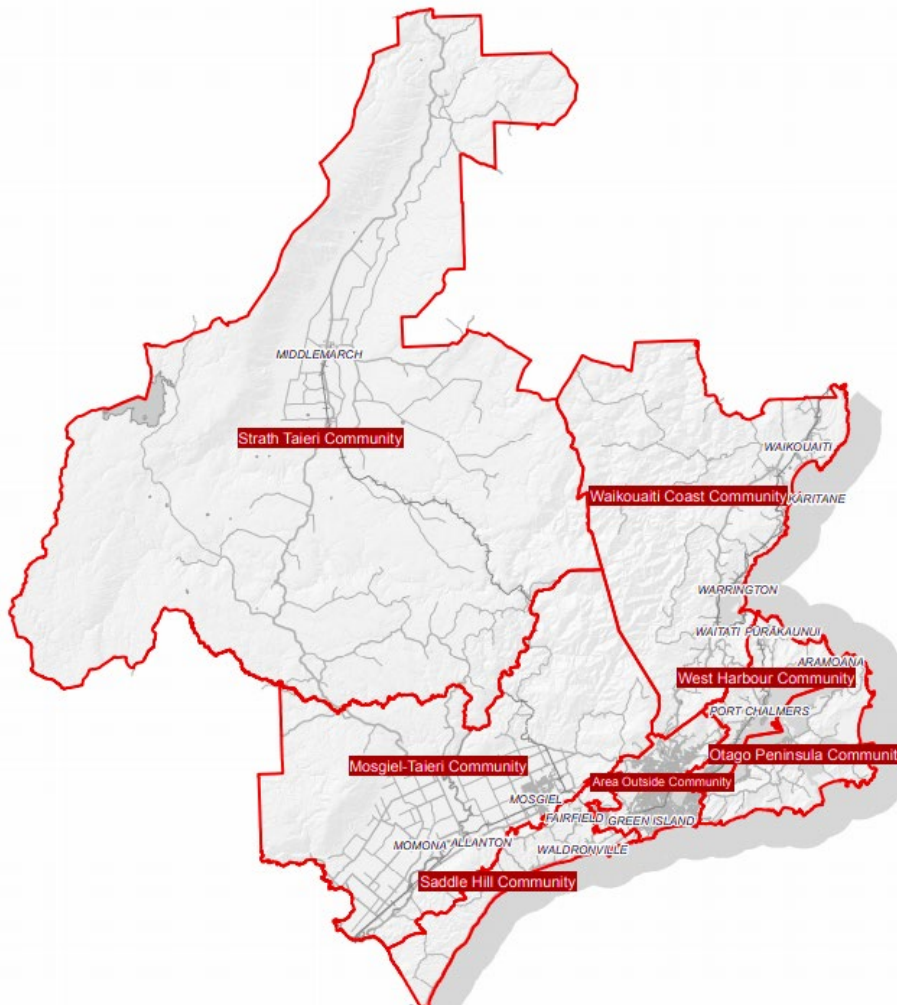
This Plan also includes activities that we, the Community Board, plan to undertake and the aspirations that we have for our community. Our most important role is to be an advocate for our community, but we also proactively support our community in other ways, and these are set out in section 4 of this plan.

This Plan is subject to change and revision as needs arise and priorities alter.

2 KEY INFORMATION

2.1 BACKGROUND

The City of Dunedin has six Community Boards within its boundary, as shown in the map below.



Each Community Board has six elected members, and one councillor representative. The Community Board members are elected every three years as part of the local body elections. Community Boards must comply with the same rules and regulations as council, such as the Local Government Act.

The primary role of a Community Board is one of advocacy for its community. Each Community Board makes representations to the DCC on the priorities those boards have identified for their community area, that they would like to see included and funded in the council's annual plans and 10 Year Plans.

Any matters of an operational nature, e.g., the reporting of potholes, tree issues etc., are reported to council via the DCC's 477 4000 phone number, and do not form part of the Community Board's priorities.

Each Community Board holds public meetings approximately every six weeks, and these meetings are advertised on the DCC website and in the Otago Daily Times. The meeting schedule for the 2023 calendar year is provided in Section 6 of this plan. The agendas and minutes from those meetings are also available on the DCC website at <https://www.dunedin.govt.nz/council/council-meetings/agendas-and-minutes>

At the start of each meeting, there is a public forum session, which gives anyone from the community the opportunity to present to the board members their views on any topic. Anyone wishing to speak at public forum must make a request to speak at least two working days before the day of the meeting. They can do this via the Chair of the Community Board or contact a Governance Support Officer at the DCC at governance.support@dcc.govt.nz.

Community Boards are allocated a Discretionary Fund of \$10,000 each year which can be used to provide grants to community organisations. Details regarding this can be found on Pages 23 - 26.

2.2 BOARD MEMBERS AND CONTACT DETAILS

Board members for the 2022-2025 triennium are as follows:

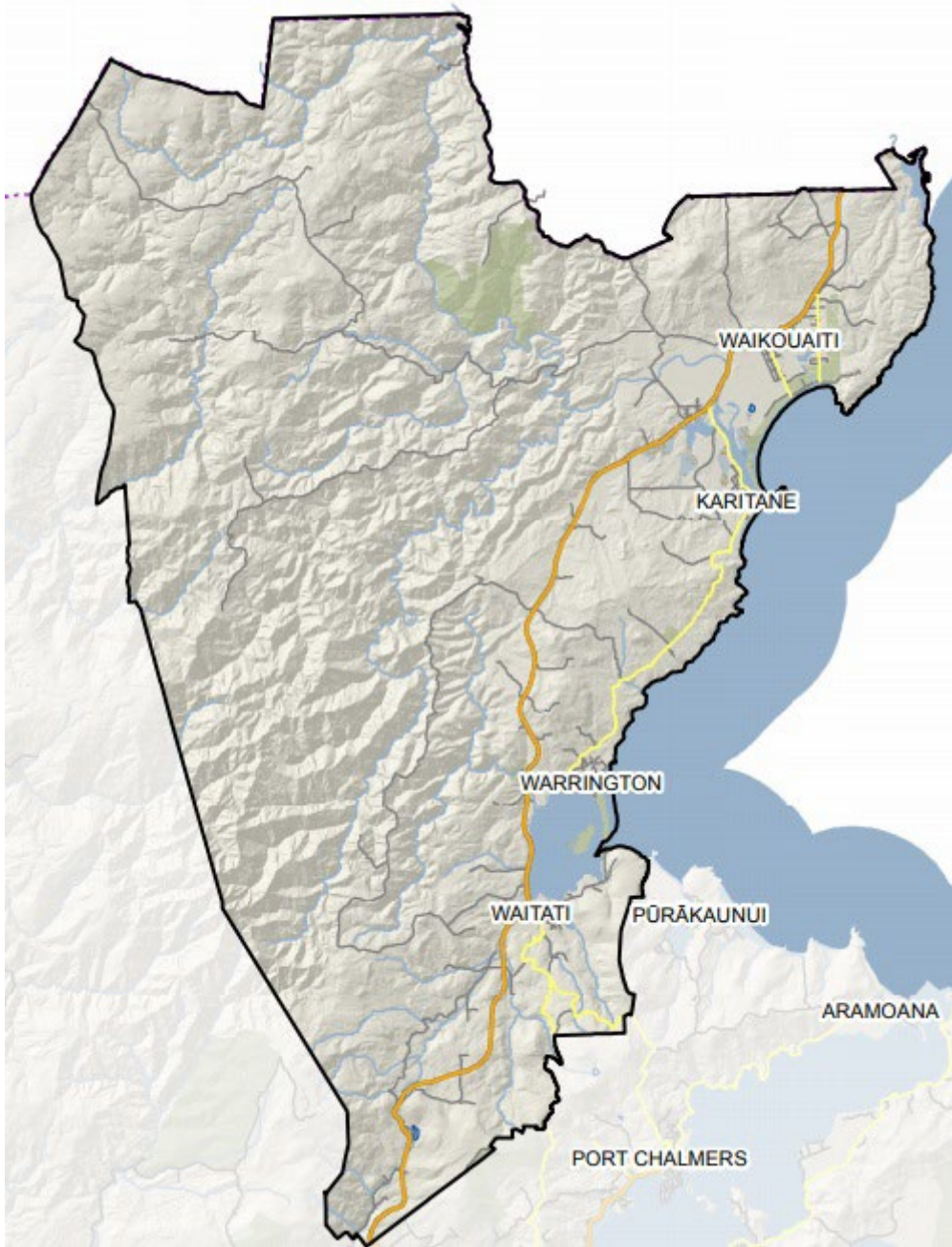
Name	Cell phone	Email
Alasdair Morrison (Chair)	027 435 4384	info@calmarine.co.nz
Andy Barratt (Deputy Chair)	021 890 048	asbarratt@gmail.com
Sonya Billyard	027 253 9205	billyardsonya@gmail.com
Mark Brown	021 169 2303	blueskin@xtra.co.nz
Chris McBride	027 526 6006	chris.mcbride1988@gmail.com
Geraldine Tait	021 217 5492	gersftait@gmail.com
Cr Jim O'Malley (Councillor Representative)	021 525 547	jim.omalley@dcc.govt.nz



Meeting Schedule for 2023

Date	Venue	Starting time
22 February 2023	Blueskin Bay Library, Harvey Street, Waitati	5.30 pm
5 April 2023	Surf Club Social Rooms, Warrington	5.30 pm
17 May 2023	Karitāne Hall, Coast Road, Karitāne	5.30 pm
28 June 2023	East Otago Events Centre, Main Road, Waikouaiti	4.30 pm
9 August 2023	Otaru Room, 2 nd Floor, Civic Centre	5.30 pm
20 September 2023	Blueskin Bay Library, Harvey Street, Waitati	5.30 pm
8 November 2023	Surf Club Social Rooms, Warrington	5.30 pm

2.3 MAP OF THE WAIKOUAITI COAST COMMUNITY BOARD AREA



2.4 OUR COMMUNITY

The Waikouaiti Coast community is made up of seven settlements, including from the south (e.g. Dunedin) to the north: Waitati, Evansdale, Warrington, Seacliff, Hawksbury, Karitāne and Waikouaiti. Between each settlement, the landscape is mainly rural, consisting of farming, forestry, and stands of native bush. The population of the area in the 2013 census was 3261.

Details about our various communities can be found on Pages 29 - 39

3 PRIORITIES FOR OUR COMMUNITY

3.1 Current Priorities

We have identified the following priorities for our community that we would like to see included in the Council's 2021-31 10 year plan. As noted earlier, this plan is subject to change, and so this list of priorities will be included on the agenda of each of our Community Board meetings

Details	Est. Cost	When in 2021-31 10 year plan	Justification	Priority
Continue with planting of native trees and shrubs on dunes alongside Matanaka Drive, Waikouaiti. Parks & Recreation currently contracting Kāti Huirapa Rūnaka ki Puketeraki to carry out the work	Funded from proceeds of pine forest harvesting	Years 1 & 2 for first stage – then progressing to outliers in following years	The pine forest, originally grown as a cash crop, was harvested 2015-16. Community meetings held and good support to create an indigenous forest	
Maintain planted spray area south of the new indigenous forest. This was the first area to be re-planted after the pine forest was harvested, but maintenance by DCC did not happen. It is the area where treated effluent from the Waikouaiti sewage treatment plant is sprayed for dispersion. This requires urgent attention since many of the weeds are now higher than the trees	TBA	Year 1 & 2 then <u>ongoing maintenance required</u>	Will become a very expensive mess if not rectified soon.	
Transfer station and recycling centre at Waikouaiti. Following closure of the landfill in 2016 a transfer station was established on the site – currently managed by Waste Management Ltd under contract to DCC. Following a public meeting we held in 2017 a local group was formed – now known as 'One Coast'. They are working towards the creation of a significant Recycling Centre. Our Board has representation on this group		Ongoing	Meets with DCC goals of waste minimisation	
Maintain facilities for visitors along Waikouaiti beach front. This is a very attractive and popular area for visitors. New seating & picnic tables have been provided recently by local group, POWA	TBA	Year 1, and ongoing maintenance	Popular requests for facilities such as seating, picnic tables and rubbish bins	
Provide measures to reduce the effects of coastal erosion along Waikouaiti beachfront. Establishing suitable plantings along the roadside has been recommended by DCC Coastal Specialist	TBA	Year 1, and ongoing monitoring and maintenance	Community concerns about this area	
Provide disincentives for vandalism along the Waikouaiti beach front. Effective signage and barriers are required to deter vehicular vandalism along the beach area	Approx \$10k	Year 1, and ongoing maintenance	Required to protect valuable ecosystems, wildlife and DCC assets	

<p>Advocate for a cycleway between Waikouaiti and Karitāne. Community input has been sought regarding preferences for a suitable location and formation of a funding organisation. Board will liaise with the recently formed interest group and with KiwiRail, ORC, DCC and other groups as necessary</p>	TBA	Construction could take up to 10 years	Public demand for many years	
<p>Creation of a BMX Track in Waikouaiti Board is working with a local group, and Parks & Recreation</p>	Approx \$250k	Years 3 - 5	Few outdoor recreation facilities in Waikouaiti for young people	
<p>Address safety concerns along Beach Street, Waikouaiti Board & DCC Transportation liaising with Mainland Poultry and local Police</p>	TBA	Year2 and ongoing	Public safety concerns	
<p>Enhance the appearance of Waikouaiti's main road as the 'Northern Entrance to Dunedin City'. Board to work with appropriate DCC departments and 'Keep Dunedin Beautiful'</p>	TBA	Year 2 & 3, and ongoing upkeep	Public concerns	
<p>Moana Gow Swimming Pool Liaise with Moana Gow Trust as necessary. We have a Board Member on the Trust.</p>	TBA	Ongoing	This popular facility is being maintained by the Trust. We ask that DCC funding will continue.	
<p>Continue monitoring of Karitāne Spit Recent efforts by the local community and DCC Coastal Specialist appear to be successful in remediating the sand spit which was partly washed away in 2018 but this seems to have created other issues. An overall management plan for the Karitāne Harbour Area is required.</p>	TBA	Ongoing	A storm in 2000 destroyed much of the spit and caused expensive damage to Coast Road and the foreshore. Heavy rain event in July 2022 caused more issues.	
<p>Provide measures to reduce the effects of coastal erosion along Karitāne beachfront Establishing suitable plantings along the roadside has been recommended by DCC Coastal Specialist. Attend to precarious trees above the beach. Provide signage to restrict large vehicles/camper vans from proceeding uphill on Sulisker Street.</p>	TBA	Year 1, and ongoing monitoring and maintenance	Protection for Sulisker Street	
<p>Truby King Recreation Reserve Board is working with TK Reserve Management Committee and Parks & Recreation to achieve the aims of the revised Management Plan, which include the provision of toilets, car parking & tennis court refurbishment</p>	TBA	Year 1 and ongoing	This historic area had fallen into disrepair. The local community is very keen to see it remediated	
<p>Coast Road between Karitāne and Warrington Local Board Members continue to monitor the condition of this road which is susceptible to slumping and notify DCC Transportation as necessary</p>	TBA	Ongoing	This road is susceptible to sudden slumping, particularly during periods of heavy rain	

Warrington Beach Effective signage and barriers are required to deter vehicular vandalism along the beach area. Signage to be clearly legible.	TBA	Year 1 plus ongoing monitoring and maintenance	Community Concerns about this area	
Advocate for a cycleway between Warrington/Evansdale and Waitati. Community input has been sought regarding preferences for a suitable location and formation of a funding organisation. Board will liaise with the recently formed interest group and with KiwiRail, ORC, DCC and other groups as necessary	TBA	Construction could take up to 10 years	Public demand for many years	
Warrington Domain Board will continue to monitor the effects of Freedom Camping, liaising with Parks & Recreation. Board will continue to advocate for increased Freedom Camping facilities in Dunedin City to reduce congestion on the Domain	TBA	Ongoing	Local concerns	
Doctors Point Beach Board will continue to liaise with local landowners and DCC Parks & Recreation to aid in the preservation of this area	TBA	Ongoing	Much of the area is owned by the Waitati Beach Society, who have problems with unauthorised vehicular campers	
Shortcut Road Board is working with DCC Transportation and local community to provide an effective solution to safety concerns	TBA	Year 2 & 3	Concerns from community	
Waikouaiti, Karitāne and Hawksbury Village areas water quality. Keep up to date with 3 Waters Department regarding current upgrade.	TBA	Year 1 & 2	Public Demand	

3.2 Future Priorities

The following priorities for our community will be included in the Council's 10 Year Plan: 2021-31

Details	Est. Cost	When in 2021-31 10 Year Plan	Justification	Priority
Continue to advocate for improved bus services between Dunedin City and our coastal communities. After much community feedback and liaison with Otago Regional Council a weekend service has started. A regular service for Warrington residents is also required.	TBA	Year 1 & 2 and ongoing	Public Demand	
Improvement in water quality for Waikouaiti, Karitāne and Hawksbury Village residents	TBA	Year 1 -3	Public Demand	
The Board to be included in a working party which will look at all environmental issues in, and around, Karitāne Harbour.	TBA	Year 2 & 3	Public demand and DCC Asset Protection	

SECTION FOUR: COMMUNITY BOARD ACTIVITIES & ASPIRATIONS

MISSION STATEMENT of the Waikouaiti Coast Community Board

To respond to, and represent the community's concerns and aspirations, and to support community initiatives, through effective participation and consultation.

Activities and aspirations of the Waikouaiti Coast Community Board, classified by Dunedin City Council 'Community Outcomes'

Dunedin City Council through the 10 Year Plan 2012/13 – 2021/23 adopted 10 key community outcomes. The following table provides a key to the Board's activities and aspirations

Board's Community Outcomes		DCC Community Outcomes	
➤ Wealthy Community	➤	➤	A Thriving and Diverse Economy
➤ Accessible City	➤	➤	A Connected Community
➤ Safe & Healthy People	➤	➤	A Safe and Healthy City
➤ Sustainable City & Environment	➤	➤	A Distinctive Built Environment
		➤	A Valued and Protected Natural Environment
		➤	A Sustainable and Resilient City
➤ Supportive Community	➤	➤	A Supportive Community
➤ Culture & Learning	➤	➤	A Vibrant and Creative City
		➤	A City of Learning
➤ Active City	➤	➤	An Active City

Projects in relation to goals

Wealthy Community

Priority	Issues	Description	Action to be Taken	Comment
	Events and Festivals	<p>Support and promote cultural and recreational events in the community</p> <p>Support local events and liaise with organisers</p> <p>Encourage new events</p>	<ul style="list-style-type: none"> • Provide support, where appropriate, to Community Events and Festivals. E.g. Community Markets; Blueskin Show; Karitāne Surfing Festival; Warrington Surf Lifesaving; • Support and promote cultural events of DCC and other non-profit community agencies. 	
	Tourism	Identify and, where appropriate, promote tourism opportunities that will provide a benefit to the Board's area and beyond	<ul style="list-style-type: none"> • Support the holding of consultation in the area about Tourism opportunities • Support and promote the formalisation and branding of the "Coastal Scenic Route" • Support the promotion of our area as a destination for cycling and other active recreational activities 	

			<ul style="list-style-type: none"> Support freedom camping and the provision of appropriate facilities within our area. 	
Local Business	Support existing businesses within our community Identify and, where appropriate, support business development opportunities that will provide a benefit to the Board's area and beyond	<ul style="list-style-type: none"> Facilitate discussion between local businesses and Council's Economic Development Unit Facilitate discussion between local business and key agencies as appropriate 		
Technology	Encourage the development of infrastructure that supports and enables effective use of technology in our area	<ul style="list-style-type: none"> Liaise with key infrastructure providers and agencies to encourage the extension, and enhancement of infrastructure in our area 		

ACCESSIBLE CITY

Priority	Issues	Description	Action to be Taken	Comment
	General roading issues	Consult with affected parties e.g. residents, businesses and landowners	<ul style="list-style-type: none"> Ongoing as issues arise 	
	Safety works	Liaise with DCC Transportation to facilitate Safety Assessments on various roads within our community	<ul style="list-style-type: none"> Ongoing as issues arise 	

ACCESSIBLE CITY (cont.)			
Storm water networks	Maintain adequate storm water networks within our urban areas	Review existing issues with the view to creating a schedule of priorities	
Dust suppression	Water run-off from roads Ongoing monitoring	<ul style="list-style-type: none"> Annual comment to Draft Annual Plan 	
Weeds on road & verges & railway land	Weed suppression Promote alternatives to toxic sprays	<ul style="list-style-type: none"> Liaise with relevant departments and authorities 	
Signage	Installation of signs that are easy to read (Beaches, Reserves, Coastal Scenic Route, Location of Truby King Reserve, etc.)	<ul style="list-style-type: none"> Meet with appropriate DCC staff involved in signage and create an action plan to be followed. 	
Bus Shelters	Upgrade and maintain	<ul style="list-style-type: none"> Advocate for the adequate provision of bus shelters. Currently lacking in Karitāne & Waikouaiti 	
Footpaths	Provision of adequate footpaths	<ul style="list-style-type: none"> Encourage DCC to ensure footpaths/walking spaces provided are of a safe and appropriate width, that they are maintained to an acceptable standard, and that vegetation is controlled. Examine feasibility of restricting vehicles parking on footpaths 	

	Rural roads	Monitor for safety issues		
	Street lighting	Provide adequate street lighting	<ul style="list-style-type: none"> • Monitor to ensure adequate lighting for new housing developments. • Evaluate feasibility of lighting between Evansdale & Warrington 	
	Ditches and open drains	Ensure that ditches and drains are cleared regularly	<ul style="list-style-type: none"> • Monitor condition of roadside drainage 	
	Safe Walking Spaces	Concern that the current pedestrian access network within our Townships does not provide for a safe pedestrian environment.	<ul style="list-style-type: none"> • Identify and prioritise through consultation with the Community and DCC staff strategic corridors of safe walking spaces within our townships, with particular focus on providing safe access to community facilities. 	

SAFE & HEALTHY PEOPLE

Priority	Issues	Description	Action to be Taken	Comment
	Northern Water Schemes	Water quality and sustainability	<ul style="list-style-type: none"> • Liaise with DCC 3 Waters Dept. regarding water quality. • Promote harvesting of rainwater where appropriate • Investigate feasibility of a future 'big pipe' from the city to all north coast communities 	

	Waste management	Minimise waste to landfill	<ul style="list-style-type: none"> • Encourage waste minimisation initiatives. • Support 'Clean-up days' at Warrington • Support 'One Coast' group 	
	Sewerage systems / effluent disposal	System upgrades	<ul style="list-style-type: none"> • Waikouaiti/Karitāne systems due for upgrade • Warrington system requires upgrade or relocation 	
	Waitati effluent Disposal	Advocate for an assessment of the community needs and environmental impact of the existing disposal systems within Waitati Township. Consider one or more sewerage schemes.	<ul style="list-style-type: none"> • Facilitate engagement with the Waitati community to gain an understanding of the community's needs and aspirations with regard to effluent management 	
	Public Toilets	Advocate for the provision of additional public toilet facilities as appropriate. Ensure maintenance of existing toilets is adequate	<ul style="list-style-type: none"> • 	

SUSTAINABLE CITY & ENVIRONMENT

Priority	Issues	Description	Action to be Taken	Funding/Resourcing
	Reserves	<p>Management Plans:</p> <ul style="list-style-type: none"> Warrington/Waitati : Rabbit Island Evansdale Glen Mt Watkin/Hikaroroa Truby King Reserve Hawksbury Lagoon 	<ul style="list-style-type: none"> Support staff with the production of Management Plans, in consultation with the community, for all reserves within the Board's area Continue with work at Truby King Reserve, including provision of car parking and toilet facilities plus tennis court refurbishment. Monitor the effects of increased rural and residential activity. 	
	Residential and Rural Development	Meet with DCC Planning Dept to understand their current views regarding residential expansion		

CULTURE & LEARNING

Priority	Issues	Description	Action to be Taken	Funding/Resourcing
	Libraries	Blueskin Bay Library, Waikouaiti Library	<ul style="list-style-type: none"> Advocate for the retention of DCC service facilities at the community libraries 	
	Schools	Waikouaiti, Karitāne, Warrington & Waitati Schools + Early Childhood Centres	<ul style="list-style-type: none"> Maintain contact with school boards and provide support where appropriate 	
	Waikouaiti Museum & Heritage Centre	The museum is a key community asset that actively promotes the area's heritage.	<ul style="list-style-type: none"> Support volunteers as appropriate 	

SUPPORTIVE COMMUNITY

Priority	Issues	Description	Action to be Taken	Funding/Resourcing
	Community Plan		<ul style="list-style-type: none"> Review Community Plan regularly 	
	Communication	Newsletters Media Liaison Community Liaison	<ul style="list-style-type: none"> Provide articles for local and citywide newsletters/newspapers/e- publications Maintain a website 	
	Rates & DCC fees	Monitor/evaluate and advocate where appropriate		
	Retain Community Board and Councillor Representation	Encourage community input	<ul style="list-style-type: none"> Actively participate in the representation review Advocate for increase in discretionary funding 	
	Meetings	Promote availability of Public Forum to raise community issues Community Board Conferences Liaison with Kati Huirapa Rūnaka ki Puketeraki	<ul style="list-style-type: none"> Advertising/newsletter. Promote, facilitate and participate in regular conferences involving Dunedin's Community Board members. Hold Community Board meetings at Puketeraki Marae as appropriate. 	

War Memorials	Waitati Waikouaiti Seacliff Karitāne	Waitati, Waikouaiti, Merton (Private)	<ul style="list-style-type: none"> • Ensure maintenance is undertaken to an acceptable standard. • Support Waikouaiti RSA with their proposal to move the SH1 war memorial. • Advocate for the creation of cemetery management plans. 	
Cemeteries		Develop accessible facilities in the area for disabled people	<ul style="list-style-type: none"> • Evaluate local facilities and infrastructure to determine accessibility and advise Council as appropriate. 	
Heritage Protection	Heritage Values		<ul style="list-style-type: none"> • Encourage the preservation of heritage items and, where appropriate, promote heritage values and assets within the Board's area. 	
Community Halls	Ensure continued provision of community hall facilities in local communities		<ul style="list-style-type: none"> • Liaise with hall committees and support their work 	
Community/Farmers Markets	Community Markets		<ul style="list-style-type: none"> • Support community market days as appropriate 	

ACTIVE CITY

Priority	Issues	Description	Action to be Taken	Funding/Resourcing
	Playgrounds	Existing Community Playgrounds <ul style="list-style-type: none"> • Karitāne Foreshore • Waikouaiti Sportsground 	<ul style="list-style-type: none"> • Advocate for the creation of playgrounds for older children. 	

		<ul style="list-style-type: none"> • East Otago Events Centre • Seacliff • Warrington • Waitati <p>Additional Playgrounds Required:</p> <ul style="list-style-type: none"> • Waikouaiti Events Centre • Adjacent to Karitāne Hall 	<ul style="list-style-type: none"> • Advocate for additional playgrounds in Waikouaiti & Karitāne • Support Waikouaiti BMX Track initiative • Ensure community playgrounds are adequately maintained 	
--	--	---	---	--

5.1 COMMUNITY BOARD EMERGENCY PLAN

The Dunedin City Council (DCC) has a statutory role under Section 64(1) of the Civil Defence Emergency Management Act to plan and provide for civil defence emergency management within its district during all phases of an emergency: Reduction, Readiness, Response and Recovery.

The DCC promotes a policy of integrated emergency and risk planning and management within Council and with other emergency response agencies in the community.

As elected representatives, Community Board members are acknowledged as an important interface between the community and its local agencies during all phases of an emergency.

Communities are also represented by a network of Emergency Management-trained Community Response Groups (CRG) which are optimised to activate rapidly and provide immediate information and support during an emergency response.

Emergency Management Otago encourages the integration of all these entities in preparing for, and responding to, emergency events.

Two established CRGs operate in the WCCB area: Waikouaiti-Karitāne and Blueskin Bay. Whilst these groups consist of a central core of trained volunteers, each group has the flexibility to sub-divide on a geographical basis. A flooding event in Waikouaiti may well require Karitāne-based CRG members to operate independently. Likewise, Waitati, Evansdale, Warrington and Seacliff may all require a decentralised response should any of these locales become isolated. CRGs will operate from established *Community Hubs* at East Otago Events Centre and Waitati Hall. Secondary and Alternative Hub locations are identified and will be used as circumstances dictate. Additional support is likely to be provided by Kāti Huirapa Rūnaka ki Puketeraki based at the Puketeraki Marae, Karitāne.

Each of the WCCB-based CRG has developed a detailed Community Response Plan (CRP). Addressed at each specific local hazard, the CRP contains a detailed Action Plan for CRG members and critical community information such as Evacuation Routes and Assembly Areas. Community Resilience Plans are also available. This is aimed at providing the wider community with a more generic guide to local hazards and emergency preparation.

Links can be found here:

<https://www.otagocdem.govt.nz/media/1529/waikouaiti-online-vs2.pdf>

<https://www.otagocdem.govt.nz/media/1525/blueskin-bay-online-vs2.pdf>

Waikouaiti Coast Hazard Analysis

Event	Likelihood	Consequences	Duration/ Recovery Time
Snow (disruptive)	Frequent	Isolation Loss of utilities: electricity and communications Emergency service response affected	Days/Days
Snowstorm	Probable	Isolation Delivery of supplies disrupted Emergency service response affected Rural economic activity impacted Structural damage to buildings Disruption to utilities: electricity and communications	Weeks/Year
Flooding	Probable	Isolation of rural properties Inundation of land/houses Rural economic activity impacted Recreational activities disrupted Disruption to utilities: roads, bridges and rural water schemes	Days/ Weeks-Year
Extreme winds (Severe gale/ tornado)	Frequent	Property damage Roads blocked by fallen trees Risk of injury from flying materials Increased risk/consequence of fire Disruption to utilities: electricity and communications	Hours/Weeks
Major transportation accident: road, rail, air	Probable	Mass casualties possible Retrieval difficulties (access) Logistics difficulties Environmental damage Disruption to other transportation	Days/Days
Rural/urban interface fire	Probable	Property losses Roads closed Rural economic activity impacted* Environmental damage in water catchments* Disruption to recreational uses Disruption to utilities: electricity and communications	Days/Months *Years
Landslide	Probable	Property losses Roads closed City water supply pipe disrupted Environmental damage in river Disruption to recreational activities (Rail)	Days/weeks - months
Drought	Probable	Rural economic activity impacted Rural water schemes diminished City water supply diminished Increased fire risk Psychological impact on rural communities	Months/Years
Pandemic/COVID19	Current	Liaise with authorities and community as necessary	Unknown at this stage

5.2 DISCRETIONARY FUNDING FOR COMMUNITY BOARDS

The Waikouaiti Coast Community Board has financially supported numerous local projects and causes in recent years, as well as providing community leadership by encouraging networking with other community boards, circulating newsletters and undertaking appropriate training. The Board receives \$10,000 per annum (subject to annual review by Council) which is allocated based on the following guidelines:

GUIDELINES

Implicit in the decision to provide discretionary funding for Community Boards are the following principles.

- The discretionary budget should be funded by the general rate.
- Each Board receives the same amount regardless of the size of its territorial area, population or the capital value of the community area.
- Discretionary funding by the Boards should be identified as a line item in the Annual Plan, so it is subject to public comment in the consultation process. It is over to individual community boards if they wish to determine or indicate a likely apportionment of allocations.
- If expenditure is used for works or services of local significance to the Community Board, where there are consequential ongoing support or maintenance costs which will need to be funded by the Council in future years, the Council's prior approval is required.
- Discretionary expenditure is granted to applicants, with the merits of projects evaluated, on a case by case basis.
- Community Boards need to be aware of the Council's contracts and capital expenditure projects proposed for each community area before the Board finalises discretionary funding allocations.

Note

- Applicants may also be eligible for support from the Council via another of its grants schemes or policies. The Council allocates funds to support community initiatives via its Community Grants Scheme (operated under the Community Initiatives Plan – Funding). Applicants should contact the Community and Recreation Services department to discuss the criteria for receiving funding support.

Guidelines for allocations from the Waikouaiti Community Board discretionary fund

The Waikouaiti Coast Community Board may make allocations from its fund based on the priorities set in its Community Plan, and may make allocations in accordance with the following criteria:

Category A: Community Grants

Available for community-initiated projects. Non-profit making groups and/or organisations wishing to apply for funds under Category A will be required to complete the *Application for Funding from the Waikouaiti Coast Community Board* form.

Applications are subject to community/public scrutiny and comment. Therefore, applications are to be lodged no less than 10 days before the Community Board meeting at which it is to be considered.

Where an application is for part funding of a project the funds will not be released until the Board is satisfied the project (or the stage of the project to which the application relates) will proceed.

Category B: Board Projects/Activities

For Community Board initiated community projects and the Board's related activities, for example such items as attendance at conferences or training workshops, advertising and communication, producing newsletters, undertaking community surveys/questionnaires, and hosting functions.

The Board will make allocations under Category B as the need arises.

Note

The Application for Funding form is available on the Dunedin City Council website - [www.dunedin.govt.nz/ data/assets/pdf file/0006/148281/WCCB-Application-for-Funding.pdf](http://www.dunedin.govt.nz/data/assets/pdf_file/0006/148281/WCCB-Application-for-Funding.pdf)

**Application for Funding from the
Waikouaiti Coast Community Board**

Date: _____

Name of group applying for funds: _____

Contact person: _____ Position held: _____

Address: _____

_____ Post Code: _____

Contact Phone Number _____ Email _____

Short description of the project you are seeking funding for: _____

Please attach any additional information, which may be useful in explaining the project e.g.: quotations or itemised budget. Please note if considered necessary the Board may seek additional information prior to making a decision.

Amount sought from Waikouaiti Coast Community Board: \$ _____

Total cost of project: \$ _____

Amount already raised: \$ _____

How will the rest of the project cost be funded? _____

What is the timeframe for completing the project? [OR What is the date of your even/project?]

Is your project a one-off, annual or biennial event? _____

Detail the benefits to your organisation and/or the wider community which will result from this project. _____

Has your group made an application to the Board for funding within the last five years?

Yes No

If granted, how much and what was that money used for? _____

All approved funding is subject to the following:

- 1** Where an application is for part funding of a project the funds will not be released until the Board is satisfied the project or the stage of the project to which the application relates will proceed.
- 2** The organisation/group must report back to the Board within six months of the project completion or six monthly until completed.

NOTES: Applications will be considered on their merits, regard will also be had to ensuring a fair allocation over all the Board area. Any funds approved **MUST** be paid directly into the organisation's bank account, please supply a copy of the bank account name and number separately.

This application form is also available on www.dunedin.govt.nz and should be returned to Governance Support, Dunedin City Council, PO Box 5045, Moray Place, Dunedin 9054 Email: governance.support@dcc.govt.nz

Or contact: Alasdair Morrison (Board Chairperson) Telephone 027 435 4384

Waikouaiti Coast Community Board

Funding Assistance Project Completion Form

Please complete and return this form within three months of the project's completion.
Return completed form to:

The Governance Support Officer
Waikouaiti Coast Community Board
Dunedin City Council
PO Box 5045
Dunedin 9054

or email governance.support@dcc.govt.nz

Name of recipient organisation		
Contact person		
Phone Landline		Cell
Email		
Date of grant		
Project name		
Project completion date		
Actual project cost (Please include detailed breakdown of expenditure)		
Comments		
Signature		

5.3 COMMUNITY ENGAGEMENT PLAN

Ways to have your say on the Community Board's Community Plan

The Board is very keen to receive your comments on an on-going basis, and you may speak to your comments at any Board meeting. Members of the community are invited to provide feedback;

- *Verbally... by contacting a board member directly, anytime*
- *Written... addressed to the board, postal or email addresses below*
- *In person... to the board at public events*

Please clearly state the issue or suggestion you would like the Community Board to consider, or the specific action you would like to be taken.

Please send written communication to:

The Chairperson
Waikouaiti Coast Community Board
c/- Dunedin City Council
PO Box 5045
Dunedin 9054

Email: info@calmarine.co.nz
 Rebecca.murray@dcc.govt.nz

5.4

Roading Schedule – December 2022
Waikouaiti Coast

Location	Issue	Request
Waikouaiti – Beach Street	Vehicle size, frequency, speed	Safety assessment; Check adherence to Resource Consent Conditions
Waikouaiti – Henry Street	Vehicle speed, dust, noise	Assessment
Waikouaiti – Main Road	Vehicle speed	NZTA issue. Driver feedback sign still required at southern entrance
Karitāne – Coast Road	Speeding in '5 roads' area	Improve signage
Warrington – Hill Road	Vehicle speeds	Safety assessment - considering population increase and return of Freedom Camping vehicles.
Warrington – general	Increased vehicle numbers due to residential development	Safety assessment
Warrington – general	Many footpaths in poor condition	Repair & Maintenance
Waitati – Doctors Point Road	Vehicle speeds	Assessment & signage - considering impending population increase
Waitati – Harvey Street	Vehicle speeds	Assessment & signage
Waitati – Shortcut Road	Road condition; vehicle speeds; signage; overhanging vegetation	Safety assessment & upgrade
Waitati – SH1 intersection	Vehicle speeds around the curve	NZTA issue
Warrington – Evansdale	Condition of footpath	Repair and Maintenance
Karitāne	Scarp St/Coast Road intersection	Safety review
Apes Road by the Marae	Buses parking on Apes Road and blocking the road	Safety assessment of road as it is being blocked by parked buses
Coast Road, Karitāne south of community hall	Footpath very narrow and has a steep drop	Assess and repair

Section 6: Community Overview

INTRODUCTION

The area has a rich Māori heritage, particularly Karitāne, formerly known as Waikouaiti, an important fishing village in the early 17th century. The peninsula there, Huriawa, was the pa site of the principal chief of the Ngāi Tahu Tribe. Even after heavy losses at Mapoutahi Pa and in other 18th century fighting, 200-350 Māori lived in the Waikouaiti area. They formed tracks linking Waitati and Karitāne to the Taieri, which were later also used by the earliest Europeans. There is a small percentage of the population who are Kai Tahu. Another smaller settlement was situated at Warrington in the vicinity of the existing reserve

The Waikouaiti Coast community is made up of seven settlements, including from the south (e.g. Dunedin) to the north: Waitati, Evansdale, Warrington, Seacliff, Hawkesbury, Karitāne and Waikouaiti. Between each settlement, the landscape is mainly rural, consisting of farming, forestry, and stands of native bush. The population of the area in the 2013 census was 3930.

State Highway One connects most of the settlements and is the main transport corridor through the community. Also, Coast Road and Mt Cargill Roads are major scenic corridors that link the communities and have magnificent views of the coast line. There are also Department of Conservation and Dunedin City Council Scenic and Recreational Reserves (7) within the coastal area.

The Waikouaiti area was the first permanent European settlement in Otago, and now the population is predominantly European (2001 Census). In 1837 a whaling station was established at Karitāne by the mouth of the Waikouaiti River. In 1840, Johnny Jones, the owner of the whaleboat, arranged passage for several immigrants who then settled on farms in the area. By the time the first settlers arrived in Dunedin in 1848, the land around Waikouaiti was already being farmed and was able to provide food for the new residents. The original homestead of Johnny Jones – Matanaka – is a recognised site of interest, has heritage status, and is frequently visited by locals and tourists. In 1859, a metalled horse track (Old Mt Cargill Rd) to Blueskin Bay from Dunedin was commissioned and opened up the Northern Coast for settlement. In May, 1878, the main trunk line from Dunedin to Waikouaiti was opened. The train provided Dunedin residents with access to the area for beach days, picnics and holidays.

PHYSICAL ATTRIBUTES AND FEATURES

The Waikouaiti Coast Community Board serves an area containing a wide variety of land types, ranging from the volcanic hills of the Silverpeaks in the west to the yellow sandstone cliffs and sandy beaches along the shores of the Pacific Ocean in the east. Dominant features include the summit of the Northern Motorway and the Kilmog Hill on State Highway 1, both of which are occasionally closed by winter snowfalls. Of the western hills, Mt Watkin/Hikaroroa (616 m), Derdan Hill (443 m) and Baldie are of particular note. The area is drained by two major river systems: on the north side of the Kilmog, the twin branches of the Waikouaiti River join to the west of SH1 and issue into Waikouaiti-Karitāne Estuary system; south of the Kilmog, the Waitati River and Careys Creek flow into Blueskin Bay. Some features of the spectacular and undeveloped coastline include the sandstone cliffs at Matanaka, Huriawa Peninsula and the extensive beaches at Waikouaiti, Karitāne, Warrington and Doctors Point.

The climate is moderate. Winter snowfalls are usually confined to the higher country. Droughts are not uncommon, especially in the coastal area to the north of the Kilmog. Easterly rains sometimes result in floods in the Blueskin Bay and Karitāne areas. The land between Waikouaiti and Evansdale is prone to slumping and to small slips in wet weather.

The natural vegetation of the region has been heavily modified since human civilization. The clearance of native bush, begun by local Māori, intensified with the arrival of European settlers. The wetlands in the Waikouaiti

area have been extensively drained. The land has been mainly converted to agricultural purposes. The steeper land supports extensive sheep and cattle grazing, along with large-scale forestry. The rolling country closer to the coast is employed for livestock and agriculture ventures but dairying is mainly limited to the alluvial plains of the Waikouaiti River and the Seacliff Coast. Small pockets of fertile land are used for horticulture and market gardening.

Several important stands of native bush remain in the area, with approximately 400 hectares in reserves. Mount Watkin Reserve, with its stand of native bush, is an area of high conservation value. The Orokonui Ecosanctuary near Waitati is an ambitious conservation project run by the Otago Natural History Trust. Some 300 hectares of regenerating bush have now been contained within a predator-excluding fence. The Ecosanctuary opened to the public in late 2009 and has become a major visitor attraction.

The rocky coastline is broken by two estuaries; the broad, shallow Blueskin Bay, which is fed by the Waitati and Evansdale Streams, and the narrow, deeper Waikouaiti River estuary. On the seaward side, both have sandy beaches with extensive dune ecosystems and are used by a large number and variety of seabirds and ducks as well as seals and dolphins. The Hawksbury Lagoon is a particularly important wildlife reserve, providing refuge for many ducks, and the Waikouaiti River is known as an important whitebait habitat. A local community group is actively involved in the preservation and restoration of the lower river and estuary between Waikouaiti and Karitāne.

Population Statistics of area

Location	1996	2001	2006	2013	2018	5 year change	22 year change
Waikouaiti	1170	1095	1095	1122	1194	72 (6.0%)	24 (2.0%)
Karitāne	444	396	348	360	405	45 (11%)	-39 (-9.6%)
Warrington	411	396	426	450	489	39 (8.0%)	78 (16.0%)
Waitati	528	495	501	513	573	60 (10.5%)	45 (7.9%)
Evansdale* Buckland's Crossing	1140	1191	1230	1425	1482	57 (3.8%)	342 (23.1%)
Total Population in Board Area:	3693	3573	3651	3930	4143	213 (5.1%)	450 (10.9%)

** It should be noted that Hawksbury/Evansdale/Buckland's Crossing area incorporates the rest of the population outside of the main centres in the Waikouaiti Coast area.*

TOWNSHIPS/DISTRICT

The Coast is made up of seven independent settlements dotted along the coastline and motorway. One of the challenges for the Waikouaiti Coast area is to enhance the area's cohesiveness and Community Spirit as a whole, while maintaining the individuality of each community. Waikouaiti, Karitāne, Warrington, and Waitati have their own citizen groups. These four settlements each have their own primary school, and Waitati and Waikouaiti have Dunedin City Council's (DCC) community libraries. Changes over the years include traditional holiday homes being converted to permanent residences; new lifestyle blocks being created on rural land, and more residents commuting to work in Dunedin. Public transport availability in the area could be improved. Presently, buses run Monday to Friday (7a.m. – 5:20 p.m.) along the motorway from Palmerston to/from Dunedin and has regular stops at Karitāne, Waikouaiti, Evansdale, and Waitati. There are also private bus services running between Dunedin and more northerly towns.

In keeping with the Dunedin City Council's vision statements, the Board would like to work towards encouraging sustainable living within the area, which means using and then cleanly renewing our environmental resources so that our ecological footprint is reduced. This also involves ensuring that our core infrastructure and services (e.g. human made resources (e.g. pipes, roads) and environmental resources, doctors and public transport) are monitored, maintained and improved. The Waikouaiti Coast Community Board would like to support nature conservation in the region

Community descriptions from North to South

Waikouaiti (2013 population: 1125)

Waikouaiti is a large dormitory suburb of Dunedin, has a reputation for being a popular place in which to retire, and is popular with weekend visitors to the beach and river. The population has remained stable over the last 10 years. Waikouaiti has a large community and events centre, a primary school, fire station, police station, doctors' rooms, a library, a veterinarian, boarding kennels, a golf club, a DCC landfill, a rugby club, a campground, holiday accommodation, a beach, a grassy Domain, a lagoon, a river, a museum, and a racecourse. These contribute to the lives of Waikouaiti's residents, and volunteer working groups have formed to help the Council maintain and encourage the sustainable use of DCC amenities. The river is the primary source for the town's water treatment plant which supplies drinking water to the area's residents. Sewage and wastewater are treated and dispersed amongst trees on the coastal dunes. The Board recognises that it is important to maintain the biodiversity of the river in order to keep it healthy.

Waikouaiti's location on State Highway One contributes to the township's commercial activity. Businesses here include a small grocery store, market gardens and horticulture, a baker, saddler, hardware store, petrol station, garages, a fish and chip shop, second hand stores, pubs, a café, a clothing store, and arts and craft stores. These provide local and convenient supplies to the community. It also has large egg producing poultry farms. Waikouaiti also serves a service centre for the nearby Oceana Gold Mine.

Karitāne (2013 population: 360)

Karitāne is a coastal town on the mouth of the Waikouaiti River, and has some commercial sea fishing vessels. It has an important local history, including that of the early Māori (now described on the track around the Huirawa headland), whalers, the first white settlers in Otago and Sir Frederic Truby King (the founder of Plunket and director of Seacliff Mental Hospital).

Huirapa Marae is the Kai Tahu (Mana Whenua of the area) Marae, which is situated at Puketeraki overlooking Karitāne. The marae is very active and contributes a great deal to the community. It is frequently used by groups from outside the area for marae visits.

Karitāne has a primary school, a community hall, a small shop (including a petrol pump), holiday accommodation, a swimming beach, and an inlet formed by the Waikouaiti River. There are active community groups in the area, ranging from the Hall Committee to the Fishing Club, to the Waikouaiti/Karitāne River Care Group.

The recreation reserve on the river mouth and the beach are especially popular during summer, and recreational activities for visitors, including the Huirapa Track (developed by Kai Tahu), ocean wildlife tours, kayaking tours and rentals, and horse trekking are increasing. Many of the permanent community work in Dunedin.

Warrington (2013 population: 450)

Warrington is a coastal settlement on the north side of Blueskin Bay. It has a sandy beach on the Warrington Recreation Reserve with an active surf life saving club and popular playground and picnic area for Dunedin as well as local residents. Freedom Camping is permitted on the Warrington Domain. Historically, the area was an important Māori settlement and the middens at the base of the spit contain large numbers of moa bones. The tidal bay and the beach are important for wildlife. Locally, the numbers of wading birds in the area are second only to those found on Otago harbour. Birdlife here includes oystercatchers, godwits, gulls, terns, shags, herons and spoonbills.

It has a primary school, a hall, a play centre, and one church, but only a few businesses, and small arts and craft operations. The community hall is well used for meetings, parties, Tae Kwon Do classes and various community functions. The former early childhood centre now operates as a community hub, run by the local volunteer group Waiputai Trust and is used for many community activities

Waitati (2013 population: 513)

Waitati is the closest settlement to urban Dunedin, and is a settlement stretching around the south side of Blueskin Bay to Doctors Point. The beach at Doctors Point is popular on weekends and is used to launch small boats and kayaks. Cockles in the bay are harvested commercially, some for export. The Orokonui Ecosanctuary occupies 300+ hectares in the valley upstream and is open to the public. This sanctuary is a safe home to indigenous fauna and flora. The ecosanctuary is surrounded by a predator-proof fence. The tallest tree in New Zealand (an Australian gum tree) is also in the sanctuary.

Waitati has a primary school, a play centre, a community hall, a fire station, and a library. Its businesses include a shop, a garden centre, café, grocery store, art gallery/live music venue, and holiday accommodation. It has an active community which regularly holds events such as dances, markets, flower shows, the annual Music Festival and the large annual Blueskin on Show event at the showground. The Dunedin Railways excursion train runs regular train trips from Dunedin to Waitati in the summer months.

Evansdale/Hawksbury/Seacliff (2013 Population: 1482)

All other areas in the Waikouaiti Coast area out of the main centres described above are included in this **Evansdale Section of the Census**.

Hawksbury is a residential and commercial development on the former Cherry Farm hospital site. The Dunedin City Council's well-used *Moana Gow* community swimming pool is located within the complex, and is operated by a Community Trust. Hawksbury also has a cheese factory, a pie maker, a butchery, condiment makers and facilities for arts and craft workshops. The East Otago Blokes Shed has recently been established, using former Cherry Farm maintenance workshop space. Hawksbury has a private sewerage scheme and purchases potable water from the Waikouaiti municipal supply.

Seacliff is a small settlement on Coast Road alongside the railway. Janet Frame wrote about the local railway station on her way to the old Seacliff Mental Hospital. It is a close community, which designed and built its own

playground. The Dunedin City Council recently updated the Truby King Recreational Reserve Management Plan and this is being managed by Reserve Management Committee which includes Community Board Members, Seacliff residents and DCC staff. Seacliff is also known for its organic gardening and arts and craft community.

Evansdale Junction has only a few dwellings. It is at the intersection of State Highway One and Coast Road. Evansdale now has a successful Craft Brewery, pub and live music venue at the site of the former general store and garage. On the west side of the motorway is a small recreation reserve - Evansdale Glen - with walking tracks up to the Silverpeaks Forest.

Rural Land: Other than these three small settlements, the Evansdale Census Area is a predominantly rural farming community (sheep, cattle, dairy cows, & forestry), although in recent years there has been an increase in lifestyle blocks and subdivisions.

Community Activities

Economic

The Community Board supports businesses and economic activities that contribute to the wellbeing of the area in a sustainable and environmentally sound manner consistent with the principles of the Resource Management Act 1991.

Seafood: A few small fishing boats operate out of Karitāne. Cockles are harvested on an increasing scale for export in Blueskin Bay by Southern Clams Ltd.

Forestry: The large pine plantation along the Waikouaiti foreshore was harvested in 2017 and is being replaced by an indigenous forest. There are smaller privately owned plantations of eucalypts and pines throughout the area.

Farming: Sheep and cattle predominate with properties ranging from large tussock runs to small 2 to 15 hectare lifestyle blocks. Dairying is centred around the Waikouaiti River flats and Church Road.

In recent years, a programme of diversifying the commercial crops grown in the south has been facilitated and nurtured by the Council. The Board is very supportive of the DCC Economic Development Unit's role in continuing to assist with initiatives such as the Topo Climate project.

Tourism: is growing in the area, and some small businesses have recently evolved to meet tourists' needs for refreshments and other activities. Eco-Tourism developments include ocean wildlife tours by kayak or catamaran and the Orokonui Ecosanctuary. As well as the more traditional campgrounds, there are now bed & breakfasts, homestays, motels/hotels and rental holiday homes.

Industrial Developments: Mainland Poultry, close to Waikouaiti, is one of the largest egg-producing suppliers in Australasia. Oceana Gold's gold mine at Macraes Flat is a vast project and, while being slightly outside the Board's geographical area, utilises Waikouaiti and nearby Palmerston as service centres.

Retail: There is a surprisingly wide range of small retail outlets in the area. They include cafes, pubs, dairies/grocery stores, bakery, hardware store, second-hand stores and clothing design and art gallery. Fuel is available at Karitāne Store and at Waikouaiti.

Service Industries: serving the rural sector are mainly concentrated in Waikouaiti, but with some at Evansdale and Waitati, and include engineering/manufacturing plants, garages, transport companies, agricultural contractors, veterinary services, real estate agents, arborists, builders, plumbers, electricians etc

Horticulture: includes the long-established commercial and retail Blueskin Nursery in Waitati and market gardens near Waikouaiti as well as more recent developments in small scale organic production, flowers and native plant seedlings.

Recreation: There are many opportunities for recreation in the Waikouaiti Coast area. Some of the beaches are safe for swimming and surfing, and many residents and visitors from Dunedin also visit to walk along these beaches and in the Council's Recreational Reserves. Boating and fishing are also very popular activities.

Volunteer and Community Groups: Updated as necessary

Big Steps Educare
Blueskin A&P Society
Blueskin Bay Garden Club
Blueskin Bay Watch
Blueskin Media
Blueskin Playcentre and Toy Library
East Otago Arts Group
East Otago Blokes Shed
East Otago Events Centre Committee
East Otago Health Trust
East Otago Swimming Club
East Otago Taiapure
East Otago Walking/Cycling Network
East Otago Youth Worker Trust
East Otago Relief Network Trust
Eastern Rugby Club
Karitāne Fishing Club
Karitāne Hall Committee
Karitāne Lawn Bowls Club
Moana Gow Pool Committee
POWA Committee
River-Estuary Care Waikouaiti-Karitāne Inc
Tumai Ora Whanau Service
Waikouaiti Amateur Music and Drama Society Inc.
Waikouaiti District Museum
Waikouaiti Volunteer Fire Brigade
Waikouaiti Garden Club
Waikouaiti Golf Club
Waikouaiti Lawn Bowls Club
Waikouaiti Petanque
Waikouaiti Playcentre
Waikouaiti Pony Club
Waikouaiti Riding for the Disabled
Waikouaiti Senior Citizens' Club
Waikouaiti Spinners and Weavers
Waikouaiti Tai Chi
Waikouaiti Returned Servicemen's Association
Waikouaiti Tennis Club
Waikouaiti, Warrington, & Karitāne Indoor Bowls Clubs
Waiputai Trust (Waiputai Recreational Hub in Warrington)
Waitati Beach Reserve Society
Waitati Volunteer Fire Brigade
Waitati Militia
Waitati Hall Committee
Warrington Hall Committee
Warrington Surf Life Saving Club

Festivals and Events

Local events, which not only provide entertainment for locals and visitors, but add to the vitality and economic success of the area occur throughout the year. These include Karitāne Fishing Competition, Karitāne Surfing Competition, Warrington Surf Lifesaving competitions, Blueskin A & P Show, Waitati Music Festival and Waikouaiti Rodeo to name but a few. Tours and markets are organised by the Blueskin Bay Garden Club.

Summary

In the Waikouaiti Coast area there is an interaction of differing values, as urban meets with rural, permanent residents living alongside holidaymakers. Core services are limited in the townships. Among these communities there is a general feeling of optimism for the future of this unique and picturesque part of the city.

The Waikouaiti Coast Community Board intends to be proactive in retaining and enhancing essential services which support the infrastructure of the community. Because of the diversity of people's ability to pay, this Board is committed to obtaining the best value for money for its residents. Also, we are committed to developing activities that contribute to the well-being of the community, animal welfare, sustainable development, maintaining and improving biodiversity.

COMMUNITY SERVICE CONTACT INFORMATION:

Council Services	
Dunedin City Council	477 4000
Waikouaiti Library, SH1, Waikouaiti	474 3690
Blueskin Bay Library, Harvey Street, Waitati	474 3690
Education	
Blueskin Playcentre, Waitati	(027) 229 3257
Waikouaiti Playcentre, McGregor Street, Waikouaiti	(027) 426 0415
Bigsteps Educare Early Childcare Centre, Waikouaiti	4657 319
Karitāne Primary School, Coast Road, RD 1, Karitāne	465 7475
Waikouaiti Primary School, Malloch Street, Waikouaiti	465 7225
Waitati School, Mt Cargill Road, RD 2, Waitati	482 2888
Warrington Primary School	482 2605
Medical	
Waikouaiti Medical Centre, Main Road, Waikouaiti	465 7599 or PL (03) 465 1444
Waikouaiti Veterinary Centre, Pratt Street, Waikouaiti	465 7613
Halls	
East Otago Events Centre	(021) 082 55735
Karitāne Hall	Ring the Dunedin City Council on 477 4000 for contact details
Waitati Hall	Ring the Dunedin City Council on 477 4000 for contact details
Warrington Hall	Ring the Dunedin City Council on 477 4000 for contact details
Marae	
Kāti Huirapa Rūnaka ki Puketeraki	465 7300
Public Transport	
Dunedin - Palmerston (Route 1) - operated by GoBus for Otago Regional Council	Timetable on ORC Website : orc.govt.nz