

23rd Street & Park Avenue South ADA

May 27th, 2014

Presentation to Manhattan Community
Board 5 Transportation Committee

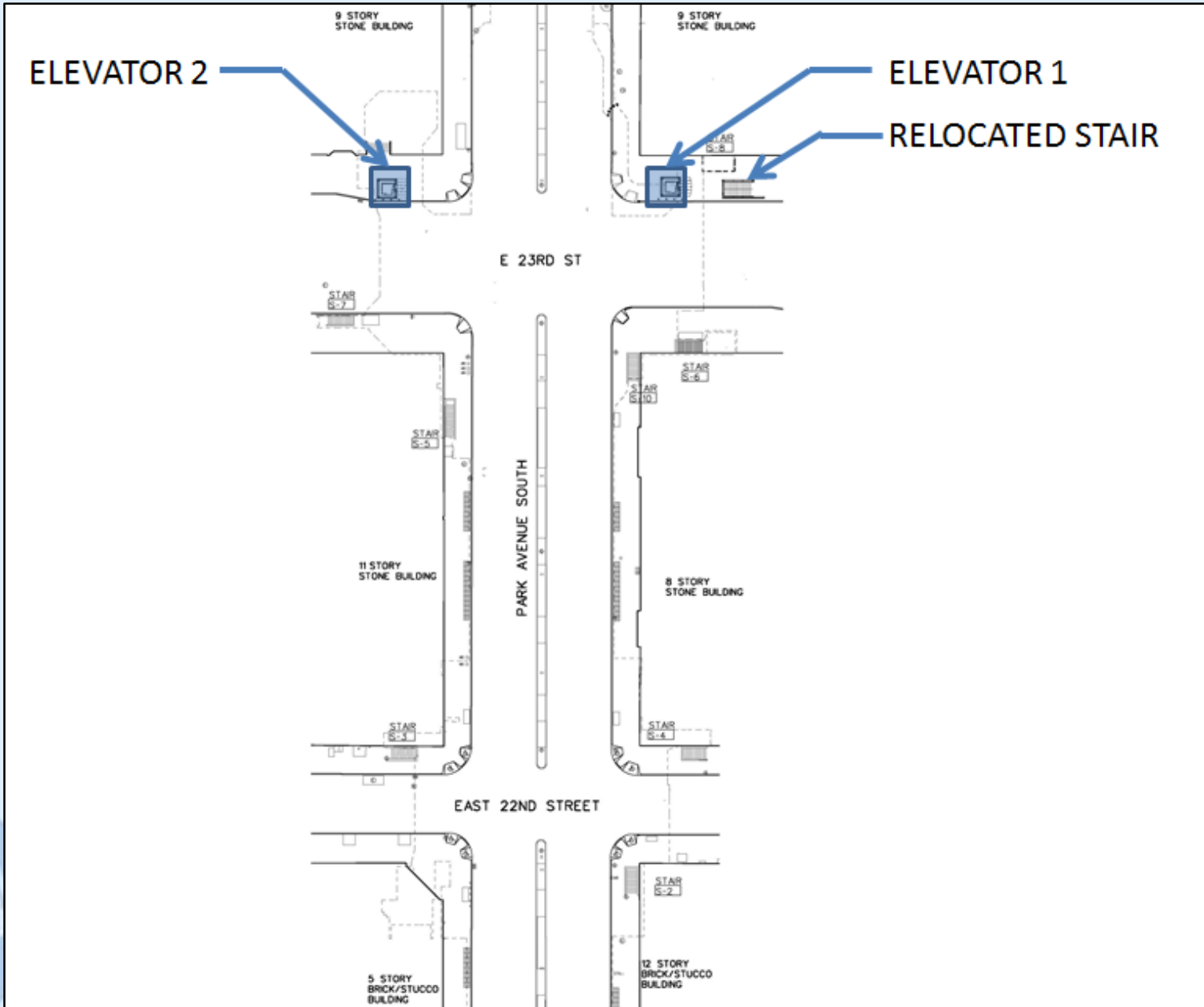


Project Scope

- Part of “Key Station Plan” to make 100 stations fully ADA accessible
- Station upgrade to be fully accessible with ADA compliant features, including:
 - Installation of two ADA accessible elevators
 - Rehabilitation of street stairs, addition of stair S-8/P-8
 - Platform edge replacement with ADA boarding areas
 - Renovation of employee facilities for ADA compliance



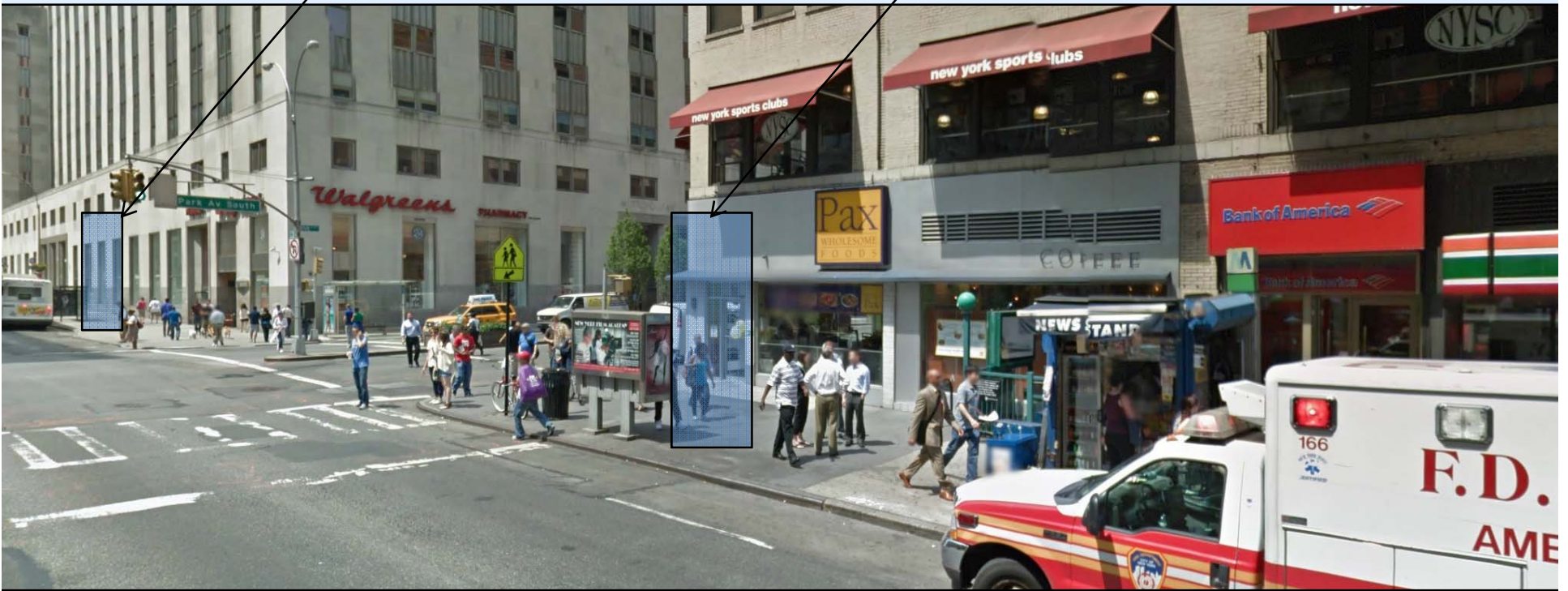
Site Plan



Project Area

ELEVATOR 2

ELEVATOR 1



Schedule

- Contract Award: March 21, 2014
- Scheduled Construction Start: July, 2014
- Construction Duration: 25 Months



Rendering of Completed Elevators

