

ASSET | PROTECTION

FOR THE **21ST CENTURY** |



ASSET PROTECTION

Gangs and the Food Industry



Food Marketing Institute
Asset Protection Conference Orlando
March 2011

Carl D. Gutierrez

Master Sergeant, Illinois State Police (ISP)

- Federal Bureau of Investigation**
Chicago Joint Terrorism Task Force (JTTF)
Statewide Supervisor
- Division of Internal Investigations (ISP)**
- Executive Protection Detail Supervisor (ISP)**
- Diplomatic Security Service, U.S. State Department**
- Liaison to Illinois Department of Agriculture (ISP)**

Supermarket Americana

“We take our supermarkets so much for granted. But go to virtually any other country in the world, and outside of maybe the largest cities, good luck finding one. America developed the idea, and offers more of – well, everything – than you’ll find anywhere else in the world.”

- Great American Things Website

U.S. Food Market Industry

- ❑ Value driven shoppers
- ❑ Mergers/Acquisitions
- ❑ Stable (flat) prices
- ❑ Intense competition
- ❑ Vulnerable to threats



Vulnerabilities

- Internal Theft**
- Financial Fraud**
- Violence/Organized Criminal Activities**

Internal Theft Vulnerability

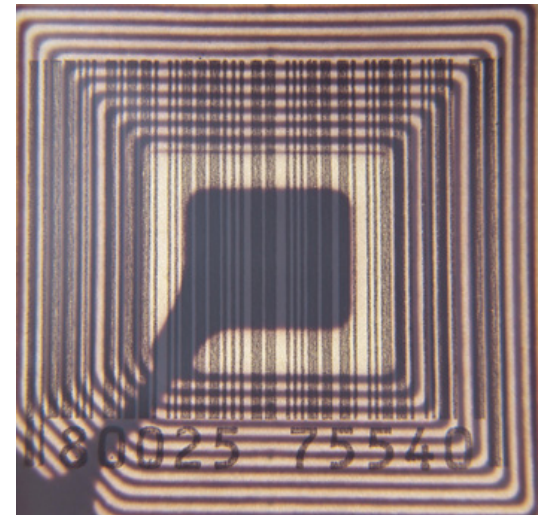
- Conventional internal theft by employees.**
- Coordinated theft by employee with external support.**
- Potential gang involvement with personal associate.
(boyfriend/girlfriend, relative of employee)**

Facebook/Social Media



Financial Fraud Vulnerability

- Increased Technology Utilization
- Online Coupons
- Digital/Mobile Telephone Apps Marketing
- RFID Theft of Personal Data
- Potential For Employee Involvement



RFID Tag

Violence/Organized Criminal Activities

- Organized Criminal groups.**
- Traditional gang violence in and around retail property.**
- “Flash Mob” events.**
- Public events which attract “lone wolf” actor.**

Organized Criminal Groups

Pose most significant threat for financial fraud.

Outlaw Motorcycle Gangs

Eastern European criminal groups



Traditional Street Gangs

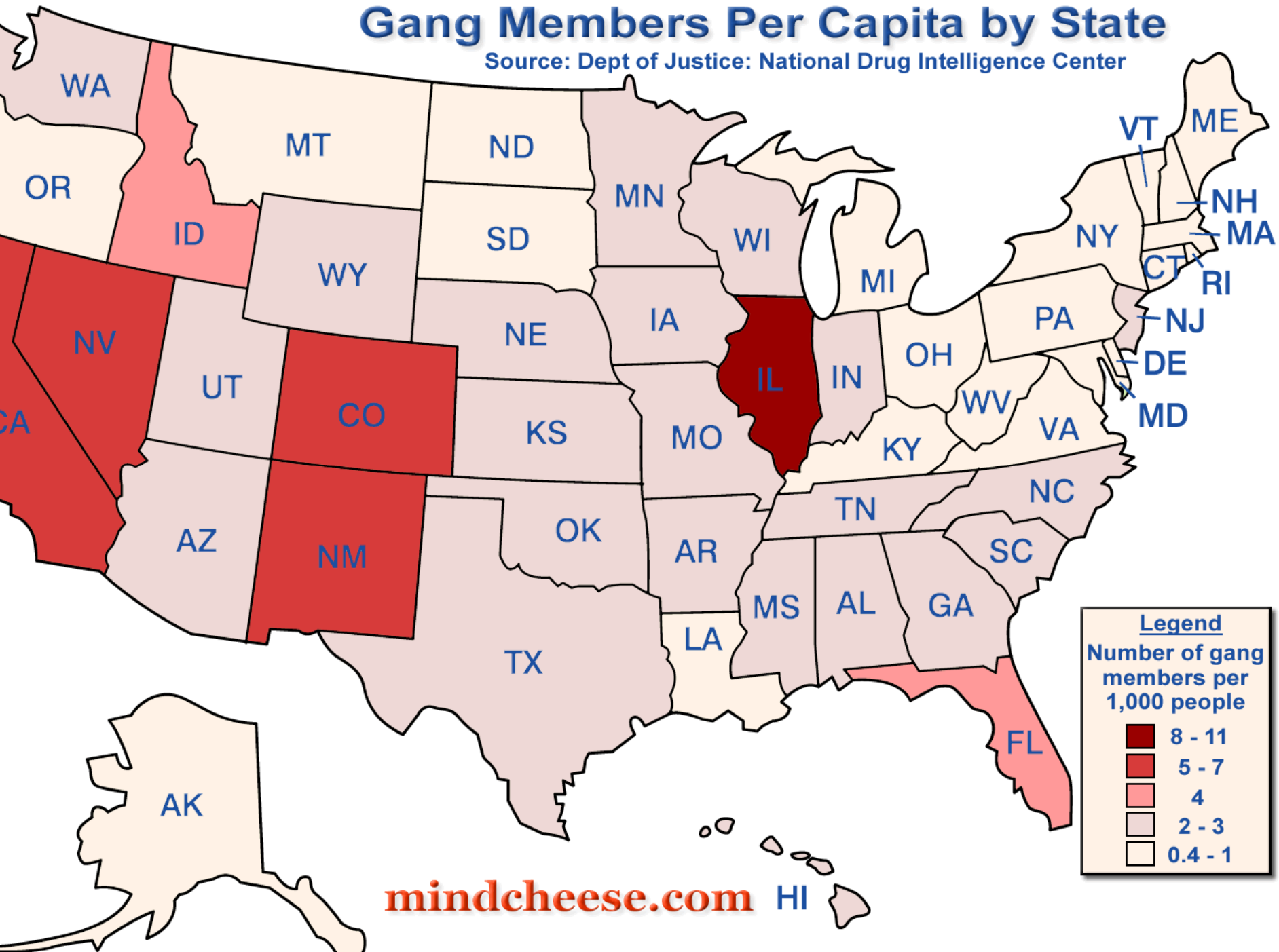
Most significant threat for:

- Disturbances
- Public Disorder
- Dispute related violence



Gang Members Per Capita by State

Source: Dept of Justice: National Drug Intelligence Center



Gangster Disciples

- ❑ Six-pointed star (Star of David) in remembrance of its co-founder 'King' David Barksdale
- ❑ A three-pointed pitchfork (pointed upward like the letter psi, to display it upside-down is an insult), and a love heart with wings, horns, and a tail
- ❑ Colors are black and blue.



Vice Lords

- ❑ A Five-pointed star.
- ❑ Rabbit wearing a bow tie; Martini glass; a glove; a top hat, and cane.
- ❑ Pitchfork pointing down. The pitchfork is a symbol of the Gangster Disciples; the inversion is a sign of disrespect.
- ❑ Colors are black and red.

Native Vice Lords



Ogitchida = Warrior

Mille Lacs are - Tattoo on left side of neck

Colors - Red and Black, RED FLAG.

Represent - Left People nation



Likely Gang Related Event

27 February 2011 TAMPA, FLORIDA —

Open source reporting indicates that Hillsborough County Sheriff's Deputies are searching for the people responsible for the Saturday night shooting death of a young man at the supermarket located at 4501 W Hamilton Ave. at 7:37 p.m.

Witnesses said two dark gray vehicles pulled up in the parking lot near the corner of the store and words were exchanged before the gunfire began. After the shooting stopped, both cars sped away, and a man in his 20s (likely a passenger) was left behind.

“Flash Mob” Events

Organized via:

- Social Networking Sites**
- SMS (Short Messaging Service) Text messages**
- Mobile Phones**

Alleged purposes can range from entertainment to social protests.

High potential for disorder and public disturbances.

Flash Mob Outside Toronto Shopping Center



“Flash Mob”

- ❑ On 31 January 2009, in an Austin, Texas grocery store a group of people assembled into what is now referred to as a flash mob.
- ❑ Hundreds of people appeared and then “froze” at a specific moment.
- ❑ <http://www.sogoodblog.com/2009/02/05/flash-mob-invades-grocery-store/>
- ❑ YouTube poster states:
“It’s amazing that a fight didn’t break out.”

“Lone Wolf” Actor

Supermarket properties may attract “Lone Wolf” actors

- Specific public or semi public events hosted by store.**
- May target these events due to concentration of people, theme, or for “Americana” symbolism previously discussed.**
- Alternatively simply be a “target of opportunity” chosen at random.**

Lone Wolf Event

4 February 2011 TUCSON, ARIZONA –

Jared L. Loughner will not face state murder charges in the Tuscon shooting spree that left 6 dead and 13 injured until after the federal government finishes its trial against him.

Mr. Loughner was tackled by spectators after the shooting outside a supermarket on 8 January 2011.

He faces three charges of attempted murder in the wounding of Representative Gabrielle Giffords and two of her aides. Additional federal charges are expected. He has pleaded not guilty.

Significant Media Coverage of Lone Wolf Attack



Useful Gang Violence Reference Websites

- **Arizona Gang Investigators Association**
<http://www.arizonagia.com>
- **Rocky Mountain Information Network**
<http://rmin.rissinfo.com/>
- **California Gang Investigators Association page**
<http://www.cgiaonline.org>
- **Midwest Gang Investigators Association page. Midwestern STG and Street Gang information**
<http://www.mgia.org>
- **Florida Gang Investigators Association page. Good source for East Coast Gang information page**
<http://www.fgia.com>
- **Texas Gang Investigators Association page. Good information on Southwest STG's and Street gangs in Texas area**
<http://www.tgia.net>
- http://www.gangsorus.com/workplace_gangs.htm

Questions ?

Carl D. Gutierrez

(312) 829-8039

gutierc@isp.state.il.us