

An Evaluation of Montessori Education in South Carolina's Public Schools

Full Report

AN EVALUATION CONDUCTED BY
THE RILEY INSTITUTE® AT FURMAN
WITH SUPPORT FROM:

Self Family Foundation
S.C. Education Oversight Committee



An Evaluation of Montessori Education in South Carolina’s Public Schools

Table of Contents

Executive Summary.....1

Montessori Education and Prior Research.....1

Study Components.....2

Key Research Findings.....3

Montessori in South Carolina’s Public Schools.....5

A Demographic Analysis of Participation in Public School Montessori.....7

Fidelity to the Montessori Model in Public School Classrooms.....9

Exploring the Impact of Public School Montessori on Academic and Behavioral Outcomes.....13

Exploring the Impact of Public School Montessori on Affective Outcomes.....19

Teacher Perceptions of Montessori’s Impact on Students and Teaching.....23

Conclusion and Discussion.....27

Acknowledgements.....28

References.....29

Executive Summary

With support from the Self Family Foundation and the South Carolina Education Oversight Committee, the Riley Institute has completed a multi-year study of Montessori education in South Carolina's public schools, the most comprehensive evaluation of public Montessori ever conducted in the United States. Between 2011 and 2016, this mixed-method study examined how Montessori impacts stakeholders in South Carolina and provided information needed to guide future investment in Montessori education. Researchers investigated the following as parts of the study: the extent to which schools implemented Montessori with fidelity; the demographic makeup of public school Montessori students; the effect of Montessori education on academic and behavioral outcomes; the impact of Montessori education on creativity, social skills, work habits, and executive function; and Montessori teachers' perspectives on job satisfaction and the challenges of Montessori in the public sector. The study results demonstrate that students in public school Montessori classrooms across the state are faring well, as compared to similar non-Montessori public school students, when examining academic, behavioral, and affective outcomes.

Montessori Education and Prior Research

Dr. Maria Montessori developed the Montessori education model over 100 years ago. The Montessori model is a child-centered educational approach based on scientific observations of children from birth to adulthood. The necessary components for a Montessori program to be considered authentic include multiage groupings that foster peer learning, uninterrupted blocks of work time, and guided choice of work activities. In addition, specially designed lessons are provided, and hands-on Montessori learning materials are carefully arranged and available for use to students in an aesthetically pleasing environment. According to the Montessori model, there are no extrinsic rewards offered or grades assigned, and children are encouraged to explore personal interests, while widely engaging with others. Angeline Lillard (2017) further outlines the essential principles of Montessori in her book, *Montessori: The Science Behind the Genius*.

There have been a number of prior evaluations that have explored Montessori education and have measured outcomes of participation in Montessori education, both in the public and private sectors (Ansari, 2014; Byun, Blair, & Pate, 2013; Hanson, 2009; Dohrmann, Nishida, Gartner, Lipsky, & Grimm, 2007; Lillard & Else-Quest, 2006; Lopata, Wallace, & Finn, 2005; Peng & Md-Yunus, 2014; Rathunde & Csikszentmihalyi, 2005). While sometimes demonstrating findings in favor of Montessori education, many of these studies have serious limitations, such as small sample sizes, questionable authenticity of Montessori methods, and selection bias. More recently, a randomized controlled trial was conducted that addresses many of these concerns and points to positive outcomes for children participating in high fidelity Montessori primary programs (Lillard, Heise, Richey, Tong, Hart, & Bray, 2017). However, taken as a whole body of work, the small quantity of research on Montessori education as compared to other educational models demonstrates the critical need for more research in this area. The study described below attempts to fill some of the gaps, particularly for research focusing on public sector Montessori education.

Study Components

Implementation Study

Information about the extent to which public schools were adhering to the Montessori model was assessed in a two-part fidelity study.

Programmatic Fidelity. Montessori principals in the state completed a survey each year about their school's Montessori program. Questions were asked about implementation factors including multi-aged groupings, student assessment protocols, Montessori materials and equipment, Montessori accreditation, and teacher and assistant Montessori credentialing and training.

Classroom Observations. Over four years, 126 classrooms across the state were randomly selected for an unannounced observation. Retired Montessori teachers who met stringent requirements and underwent extensive training conducted these observations. Teacher interviews were included as a part of this process.

Impact Study

Data about academic and behavioral outcomes, such as standardized test performance, discipline, and attendance, were explored yearly as part of the impact study, along with affective outcomes such as creativity, social skills, work habits, and executive function.

Analyzing Student Demographics. Using existing student record databases maintained by the South Carolina Department of Education (SCDE), researchers compared demographic characteristics (gender, race, family income, ESL status, and special education status) of Montessori students and non-Montessori public school students.

Analyzing Student Academic and Behavioral Outcomes. Researchers used existing student record databases maintained by the SCDE to examine standardized test performance, discipline, and attendance. The research team compared outcomes of Montessori students to demographically similar students who did not attend a Montessori school.

Examining the Impact of Montessori on Affective Outcomes. Researchers examined differences in how a cohort of Montessori students and non-Montessori students performed on assessments measuring creativity, work habits, social skills, and executive function. A cohort of students in a high-fidelity Montessori school was selected and tracked across four years. This cohort was compared to non-Montessori students in a demographically similar school in a different school district.

Gaining a Deeper Understanding of Montessori Programs: Surveying Montessori Teachers. Researchers examined how Montessori programs affected students, teachers, and schools from the perspectives of teachers. In the 2013-14 and 2015-16 academic years, an online survey was administered to all Montessori teachers within the South Carolina public school system. For both years of distribution, an average of 72% of Montessori teachers responded.

Overview of Key Findings

The key findings of the analyses are presented and summarized below. Further detail and additional results are provided in the body of this report.



Fidelity to the Model

On average, public school programs in South Carolina are implementing the Montessori model with fidelity, although there is variation regarding the extent to which different programs implement authentic Montessori. Only those students in schools that met a minimum level of fidelity were considered “Montessori students” in the outcomes analyses.



Student Demographics

When the study ended in the 2015-16 academic year, there were 7,402 students participating in a public Montessori program in 45 different schools across 24 districts in South Carolina. According to the National Center for Montessori in the Public Sector, there are more public Montessori programs in South Carolina than any other state in the country. Most Montessori programs are in Title I schools, and the majority of students are low-income. Approximately 55% of Montessori students are white, while 34% are black and 6% are Hispanic. One in ten Montessori students has a special education designation. While Montessori students are generally quite similar demographically to other public school students across the state, Montessori students are more likely to be white and higher income when compared to non-Montessori students in the same district.



Academic Outcomes

Proficiency. For the most recent year of data collection (2015-16), 52% of Montessori students met or exceeded state standards in ELA, 46% met or exceeded state standards in math, 70% met or exceeded state standards in science, and 80% met or exceeded state standards in social studies. When compared to non-Montessori public school students across the state, Montessori students were more likely to have met or exceeded the state standards in each of the four subjects.

Achievement Growth Analyses. After matching Montessori students to demographically similar non-Montessori students and controlling for student demographics and previous test scores, researchers found that Montessori students scored significantly higher on ELA state standardized tests than non-Montessori students across all three years of the analysis. Furthermore, there was a significant Montessori advantage in math and social studies in two of the three years. The results for science were mixed, as Montessori students demonstrated significantly less growth than non-Montessori students in one year (2013-14) and significantly more growth in another year (2015-16). Subgroup analyses indicated that low-income Montessori students scored significantly higher than low-income non-Montessori students in ELA, math, and social studies. While these differences are statistically significant, the differences are generally quite small, as the effect sizes typically range from .05 to .08 standard deviations .

Overview of Key Findings (continued)



Affective Outcomes

Direct assessments of a cohort of students over four years show that Montessori students generally perform similar to or better than non-Montessori students on assessments of executive function, although the results are mixed over the years. Montessori students exhibited significantly higher levels of creativity than non-Montessori students. There were no consistent differences between the two groups on work habits or social skills.



Behavioral Outcomes

Montessori students consistently demonstrated higher school attendance than matched non-Montessori students after adjusting for the attendance rate in the previous year and student characteristics. Furthermore, Montessori students were significantly less likely than similar non-Montessori students to have had a disciplinary incident or have served a suspension during the school year.



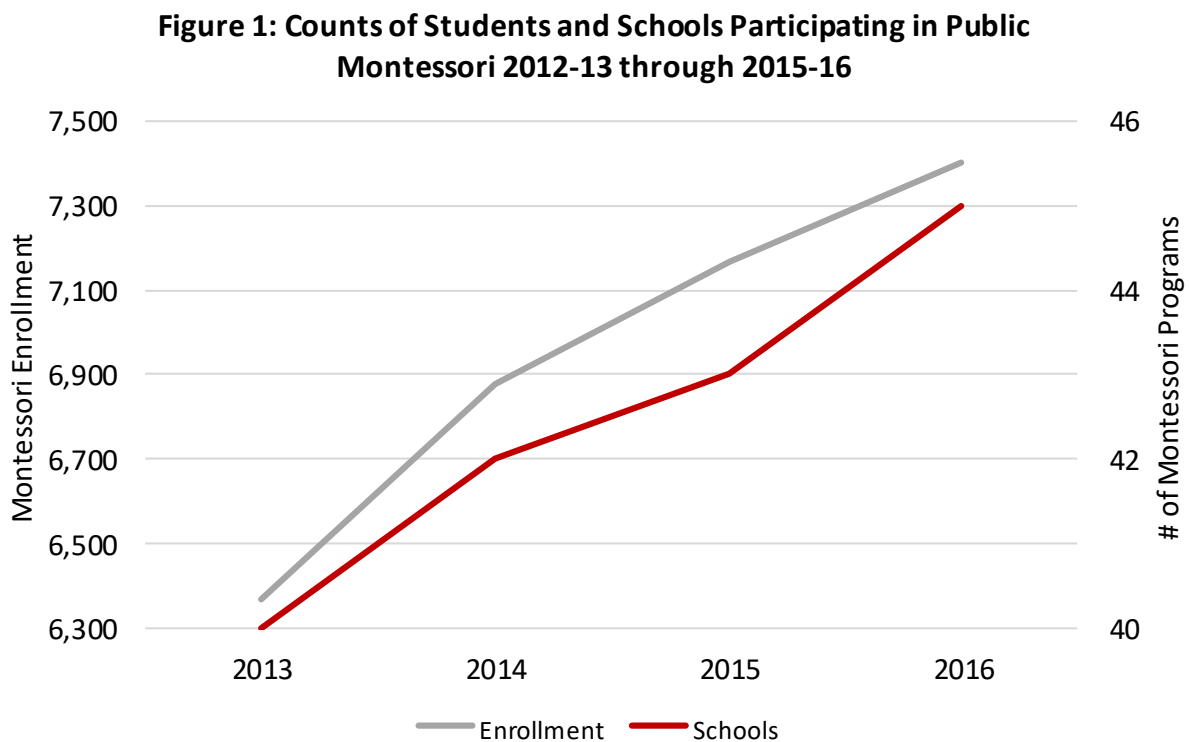
Teacher Perceptions

A majority of Montessori teachers reported that they loved their jobs and planned to remain in the profession. Few showed interest in administration. Teachers expressed concerns about the authenticity of their school's program, school and district administrators' lack of understanding of Montessori, the pressure of a standards-based curriculum, and the amount of time spent testing.

Montessori in South Carolina's Public Schools

Over the past five decades, Montessori education has earned much acclaim within the private school community for its overall approach to teaching and student learning. Its entrance into public education has been slower, but, over the two past decades, Montessori has begun to gain a foothold in America's public schools. In South Carolina, considerable investment has been made into putting Montessori on the ground in the state's public schools, specifically in areas of teacher and administrative training, facilities, Montessori materials, and ongoing professional development.

In terms of the number of programs, public Montessori education in South Carolina expanded throughout the duration of this study from 40 in 2012-13 to 45 in 2015-16. The number of Montessori students increased from 6,365 students in the 2012-13 academic year to 7,402 students by the end of the study. See Figure 1. According to the National Center for Montessori in the Public Sector, there now are more public Montessori programs in South Carolina than any other state in the country.



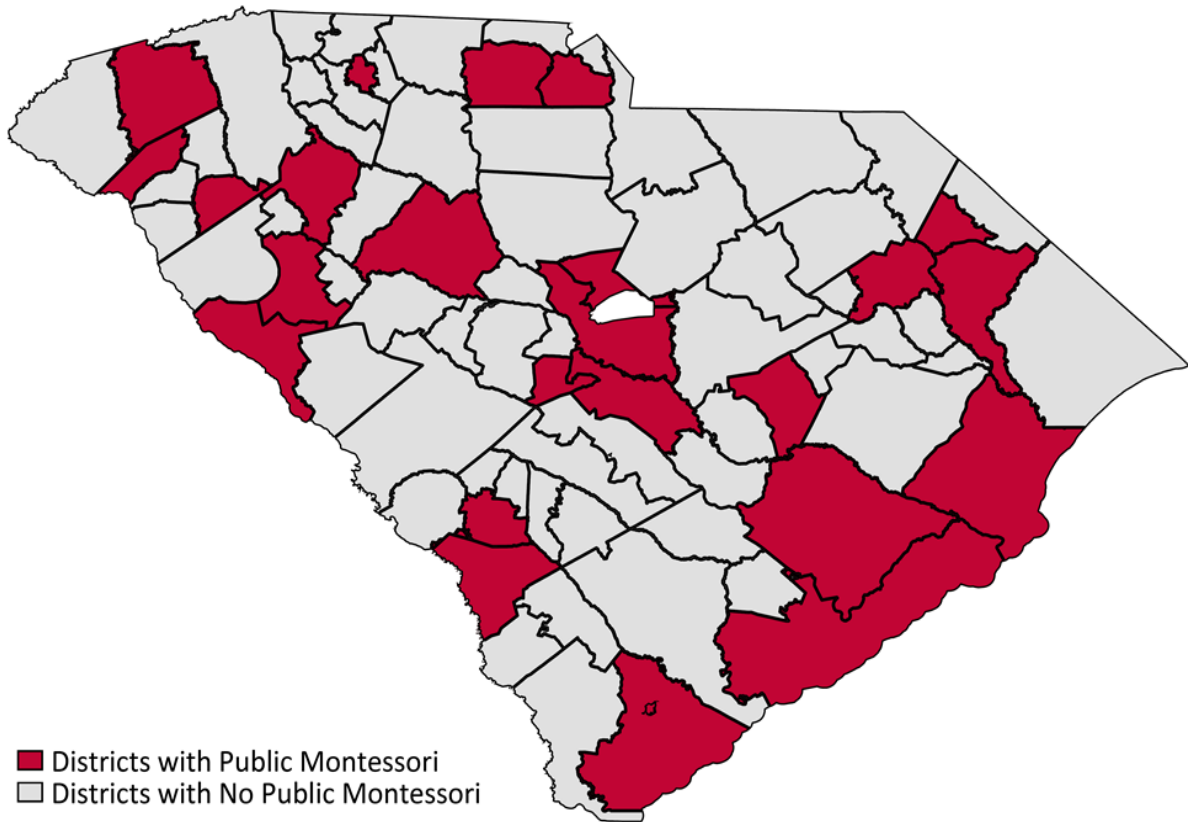
While public school students in South Carolina attended Montessori programs in all grades from PK to eighth grade, the majority of Montessori education occurred at the primary and lower elementary levels. See Table 1. During the 2015-16 academic year, 17% of public Montessori students were enrolled at the pre-Kindergarten level and 13% at the Kindergarten level. The grades with the largest Montessori enrollment were first and second grade, with each over 1,000 students. Enrollment in the middle school grades (sixth through eighth) accounted for approximately 9% of the total South Carolina public Montessori student enrollment. Most schools that had Montessori were school-within-a-school programs (88%). Approximately, 15% of schools were magnet programs, and 8% were charter schools. Sixty-one percent of Montessori programs were housed within Title I schools.

Table 1: Montessori Enrollment by Grade (2015-16)

	PK3	PK4	K	1	2	3	4	5	6	7	8	Total
N	449	820	960	1,177	1,042	891	798	596	350	187	132	7,402
%	6%	11%	13%	16%	14%	12%	11%	8%	5%	3%	3%	100%

During the 2015-16 academic year, the 45 public schools that offered Montessori education were spread across 24 different school districts in South Carolina. See Figure 2. As one can see, school districts across the state are implementing public Montessori. Public Montessori exists in rural, as well as urban, school districts in South Carolina.

Figure 2: Map of South Carolina School Districts with Public Montessori Programs



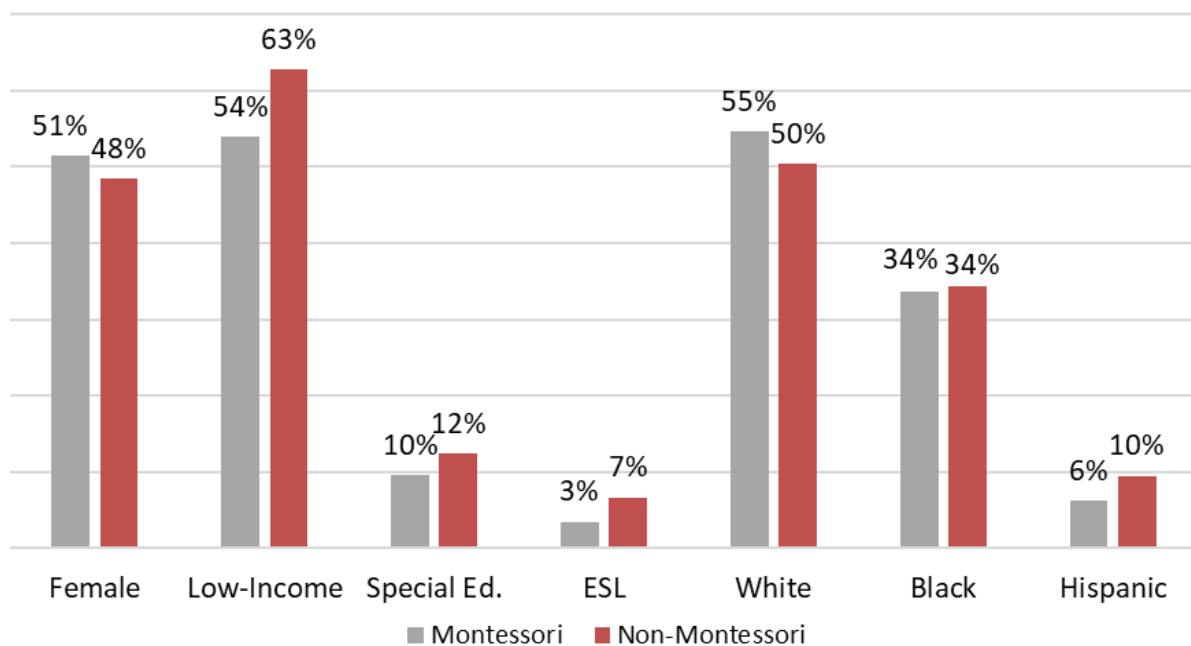
A Demographic Analysis of Participation in Public School Montessori



Research Question One: To what extent do the demographic characteristics of South Carolina’s public school Montessori students differ from students not enrolled in Montessori?

Using 2015-16 data from the PowerSchool database, researchers compared the demographic characteristics of individual public Montessori students to non-Montessori students across the state in preschool to grade eight. See Figure 3. While the majority of Montessori students qualify for free or reduced priced lunches, the analysis showed that Montessori students were somewhat more advantaged than non-Montessori public school students, as 54% of Montessori students were low-income as compared to 63% of non-Montessori students. In terms of race, approximately 55% of Montessori students were white, while 34% were black and 6% were Hispanic. Further, one in ten Montessori students had a special education designation, and three percent were considered English Language Learners. Finally, female students were slightly overrepresented in Montessori programs when compared to other public school students.

Figure 3: Demographic Characteristics of Montessori and Non-Montessori Students (2015-16)

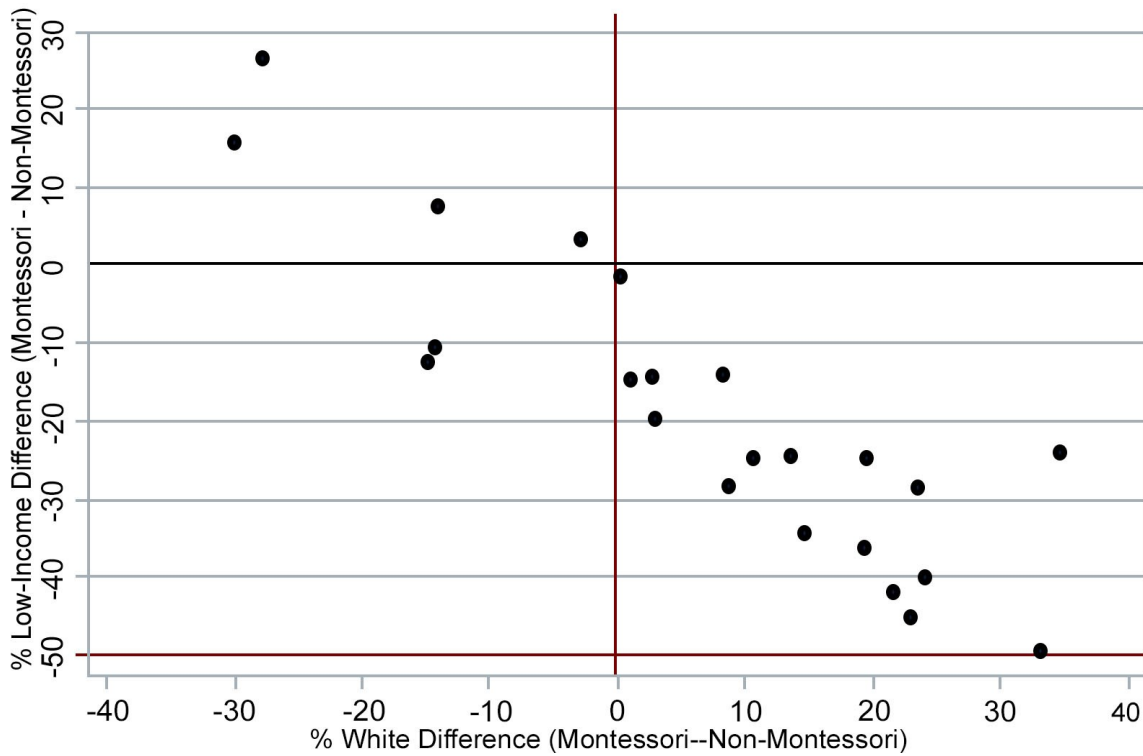


Results of this analysis demonstrate that public Montessori education is not limited to high-income or white students in South Carolina and that a large and diverse set of families are attracted to public Montessori programs. Although demographic differences do exist, the population of Montessori students is generally quite similar to non-Montessori students from across the state.

In order to better analyze the differences between Montessori and non-Montessori students, additional demographic analyses were conducted. Figure 3 compared Montessori students to all other students in the state. However, this

analysis was limited because there may have been large demographic differences between districts that provided Montessori education and those that did not. To control for this fact, researchers examined the percentage of white students participating in Montessori education and the percentage of non-Montessori white students within each school district, using data from the 2012-13 academic year. Researchers performed the same analysis for low-income students. Therefore, one is able to compare the demographic makeup of Montessori students to non-Montessori public school students in the same district. The results are presented in Figure 4. Each dot on the figure represents a different school district. The districts located in the upper left quadrant were those in which Montessori students were more likely to be low-income and non-white than non-Montessori students within the same district. The majority of districts (16 of 23 districts) were in the lower right quadrant. Montessori students in these districts were more likely to be white and not low-income than non-Montessori students in the same district. This could mean that Montessori programs in these districts were particularly appealing to white or higher income parents. Further, it is possible that these Montessori programs attracted parents who would normally have sent their children to private schools.

Figure 4: District Demographic Comparison (2012-13)



How Montessori students differ from other public school students in South Carolina is a complicated question. Initial analyses that compared Montessori students to non-Montessori students across the state showed that while Montessori students were more advantaged, overall there were few large differences between the two groups. However, the within district analysis indicated that minority and low-income students are underrepresented in Montessori programs in many school districts that offer public Montessori.

Fidelity to the Montessori Model in Public School Classrooms

 **Research Question Two:** To what extent are public schools in South Carolina implementing Montessori with fidelity?

On average, results showed that public school programs in South Carolina were implementing the Montessori model with fidelity, although there was variation regarding the extent to which different programs implemented authentic Montessori.

Fidelity to the Montessori model was measured by programmatic implementation surveys administered to all principals and by observations of randomly selected classrooms in all programs that participated for the duration of the study, across the state. The implementation survey focused on critical implementation factors, such as multi-aged groupings, student assessment protocols, Montessori lessons and materials, Montessori accreditation, and teacher and assistant credentialing and training. Schools not meeting a minimum threshold for fidelity on the programmatic implementation survey were excluded from the study and not included in further classroom observations. Thus, students attending these schools were not considered “Montessori students” for the impact analyses in this report. Programs that met the minimum threshold for fidelity on the programmatic implementation survey were promoted to the classroom observation process.

Over the four years of the study, 126 randomly selected Montessori classrooms were observed. At least one Montessori classroom was observed in each program. The number of classrooms observed at each program depended on the size of the Montessori program and the levels of Montessori offered.¹ The instruments used during classroom observations were developed by the research team for each of the three Montessori levels—primary, lower elementary, and upper elementary—included in the fidelity study. The main resources used to develop the instruments include Lillard’s (2017) *Eight Principles of Montessori Education* and the Classroom Assessment Scoring System (Pianta, 2003). All instruments were reviewed extensively by experts from international and national Montessori organizations and were piloted and calibrated. In addition, an inter-rater reliability study was conducted to establish and confirm the reliability of the data collection instruments.

Each classroom observation instrument had its own unique set of indicators widely accepted as critical to Montessori classrooms of high quality for that level, in addition to several post-observation interview questions. The indicators for all three levels were divided into the same areas: Prepared Environment; Classroom Climate; Student Learning; and Teacher and Assistant. Following the formal classroom observation, researchers conducted a post-observation interview focused on three areas: Lesson Planning; Recordkeeping; and Student Assessment.

The process to select the observation sample was systematic and utilized stratified random sampling techniques in order to ensure the appropriate levels and programs from across the state were observed. The hour-long observations were unannounced and conducted by former Montessori teachers with a Montessori credential for the level they observed.

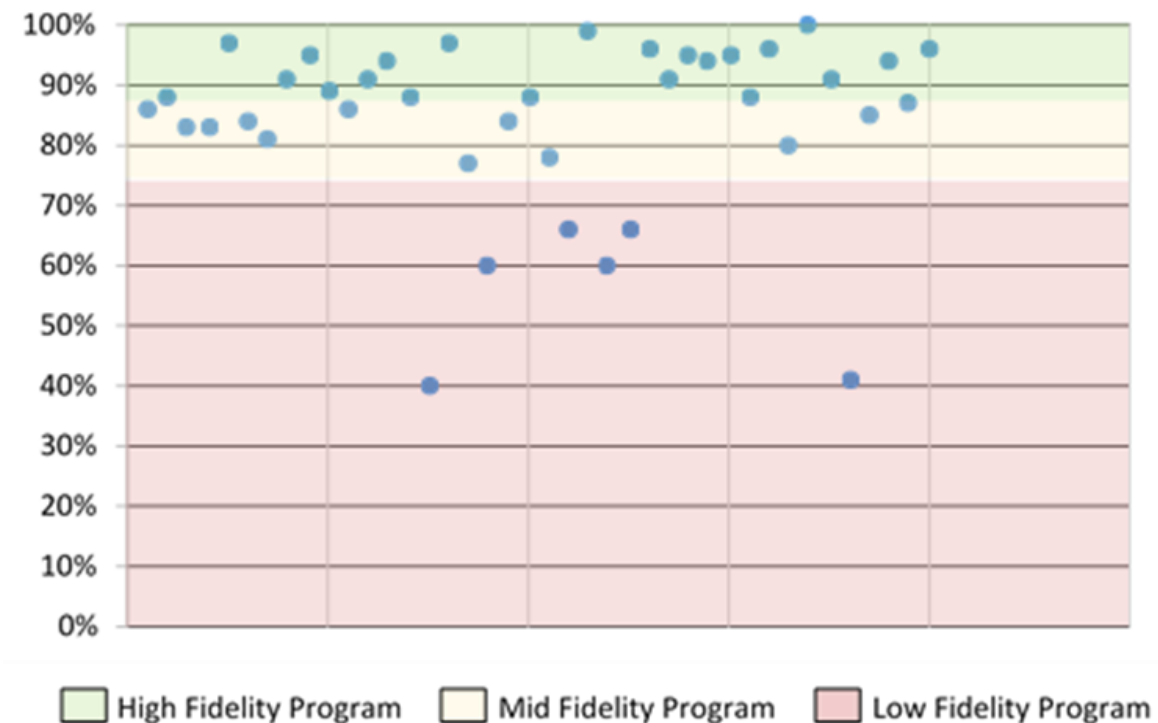
¹ Montessori programs are typically divided into multi-age classrooms—parent infant (ages 0 to 3); primary (ages 3 to 6); lower elementary (ages 6 to 9); upper elementary (ages 9 to 12); and middle school (ages 12 to 14).

A Breakdown of Classroom Observation Scores

Figure 5 below displays the fidelity scores for all programs included in the classroom observation process. Possible scores ranged from a low of 0% to a high of 100%. A program classified as high fidelity had an average classroom observation score between 88% and 100%. A program classified as mid fidelity had an average classroom observation score between 75% and 87%. Any program with an average classroom observation score of 74% or below was classified as a low fidelity program. The project's Montessori consultant assisted with the development of these program fidelity ranges.

Overall, for the primary level, 34 classrooms were observed with scores ranging from 40% to 100%. For the lower elementary level, 39 classrooms were observed with scores ranging from 51% to 99%. And, for the upper elementary level, 25 classrooms were observed with scores ranging from 41% to 100%.² All observation scores in a school were averaged to determine the overall program fidelity score. Looking at the fidelity classification of all programs, 22 programs were classified as high fidelity, 14 as mid fidelity, and 8 as low fidelity.

Figure 5: Levels of Montessori Program Fidelity



² Scores were only included for non-pilot observations.

Rich data about Montessori implementation can be gleaned from the classroom observation results, particularly when looking at results by level and focus area. Strengths of South Carolina’s public school Montessori classrooms include a positive classroom climate, Montessori credentialed teachers, sufficient blocks of uninterrupted work time for students, demonstration of the Montessori philosophy in the classroom, and high level of student engagement/learning. Programs rated as low fidelity to the model often were lacking a fully prepared environment containing all of the Montessori materials, an appropriate number of lesson demonstrations, and adequate recording of observation notes for evaluation/record keeping.

As shown by Table 2, generally, across all Montessori levels, the highest classroom observation scores were found in the area of classroom climate and the lowest scores were found in the area of prepared environment.

Table 2: Classroom Observation Scores by Level and Focus Area

	Prepared Environment	Classroom Climate	Student Learning	Instruction		Total Score
				Teacher	Assistant	
Primary	78%	88%	85%	78%	82%	82%
Lower Elementary	73%	95%	93%	86%	88%	87%
Upper Elementary	68%	90%	77%	84%	84%	81%
Average Score	73%	91%	85%	83%	85%	

The post-observation interview results in Table 3 provided additional information that aided in the assessment of classrooms. The lowest scores were in the area of record keeping and the highest scores were in the areas on lesson planning and student assessment.

Table 3: Post-Observation Interview Scores by Levels and Indicator

	Lesson Planning	Record Keeping	Student Assessment	Total Score
Primary	86%	78%	85%	83%
Lower Elementary	82%	80%	86%	83%
Upper Elementary	81%	79%	77%	79%
Average Score	83%	79%	83%	

In Table 4, perceptions of teachers regarding Montessori implementation are displayed. As the results indicate, the perceptions of teachers’ abilities to meet the needs of their students, particularly their behavioral needs, are high. The perceptions of teachers’ abilities to implement authentic Montessori while incorporating state standards, however, are lower, particularly in the lower and upper elementary levels.

Table 4: Post-Observation Interview Opinion Question Results*

	Able to meet the academic needs of students.	Able to meet behavioral needs of students.	Able to implement authentic Montessori while incorporating state standards	Feel supported, not isolated by administrators and other teachers.
Primary	8.3	8.0	8.6	8.3
Lower Elementary	7.3	8.1	6.9	7.4
Upper Elementary	7.5	8.3	6.7	7.9
Average Score	7.7	8.1	7.4	7.9

**For this portion of the interview, teachers were asked to rate on a scale from 1 to 10 how much they identified with each statement (with 10 being the highest). The average rating for each question is shown above.*

Exploring the Impact of Public School Montessori on Academic and Behavioral Outcomes



Research Question Three: To what extent do South Carolina’s public school Montessori students differ from non-Montessori on student academic and behavioral outcomes?

Using existing student record databases maintained by the South Carolina State Department of Education, the research team examined outcomes of Montessori students and looked for changes over time in student achievement, student behavior, and student attendance. The dataset included all public school students in the state from 2012-13 to 2015-16. Importantly, this database had an indicator variable for students who received Montessori education.³ To measure student achievement, researchers examined standardized test scores for grades three through eight in math, writing, ELA, social studies, and science. While all five subjects were included in the analyses, the focus was on math and ELA, as South Carolina eliminated the writing assessment for the 2015-16 school year and not all students took the science and social studies tests every year. The research team created one measure for student attendance: average daily attendance across all public schools the student attended in a given year. Finally, the research team examined student behavior, specifically if a student had an in-school or out-of-school suspension and the number of discipline incidents during the academic year.

Selection bias is a significant threat to evaluations like this one. Parents who choose to send their children to Montessori schools may be quite different than parents who do not. These differences also may be related to a host of outcomes, including test scores and attendance. To address the challenge of selection bias, the research team used three methods to accurately estimate the effect of Montessori education on the outcomes of interest. First, the analyses focused on individual student growth or change in the outcome over time, rather than on a one-year analysis of outcomes. Second, the main analyses accounted for several factors that are related to student achievement and behavior, such as family income and student disability. Lastly, the research team implemented a matching procedure to produce apples-to-apples comparisons between Montessori and non-Montessori students. The design was similar to the virtual control records approach made popular by the Center for Research on Education Outcomes (CREDO) at Stanford University (e.g., CREDO 2009, 2015; Davis and Raymond 2012). In short, Montessori students were matched to non-Montessori public school students using previous test scores and demographic factors. First, matches were limited to other students in the same grade who attended a public school in the same school district as the Montessori student. From this pool, students were exact matched on gender, race, English as a second language status, special education status, and free/reduced priced lunch status.⁴ Then, researchers included the previous year’s test scores into the matching procedure.⁵ Any potential match with a test score that differed from the Montessori student’s test score by more than .20 standard deviations was dropped. For situations in which a Montessori student had more than five potential matches at this point, the research

³ The research team worked with Montessori schools to ensure the correct coding of the variable.

⁴ In this case, exact matching means that each Montessori student was matched to non-Montessori students with the same race, gender, poverty status, ESL status, and special education status in the same grade and school district.

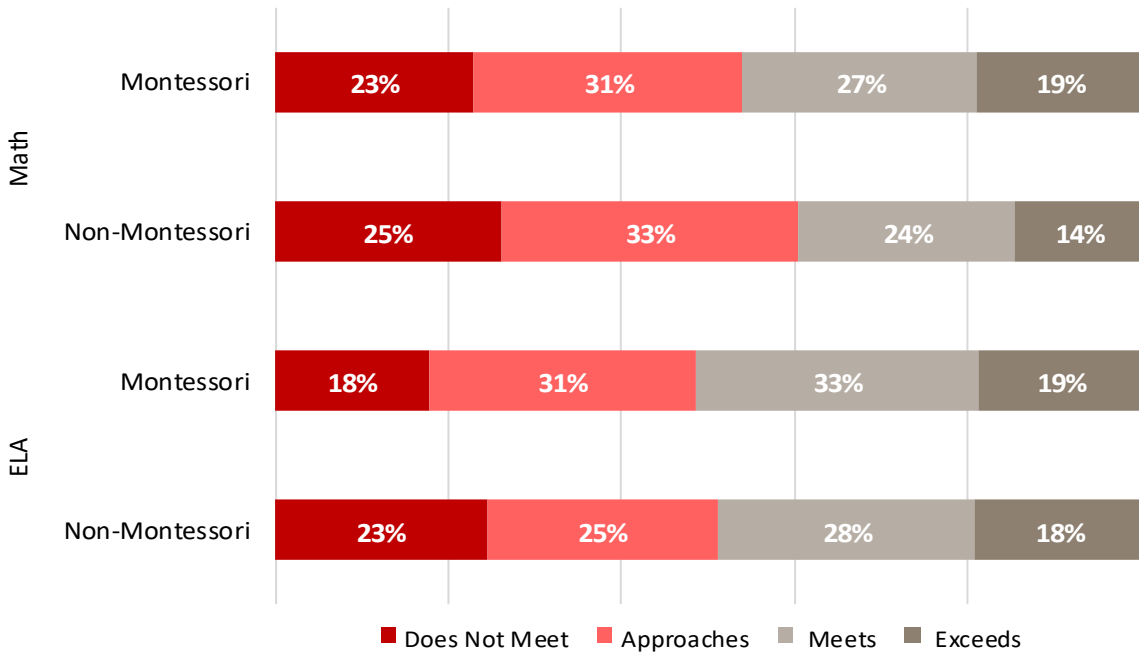
⁵ This process was completed separately for ELA, math, science, social studies, and writing.

team selected the five non-Montessori students with test scores that were the closest to the Montessori student. The goal was to get two samples, a Montessori sample and a non-Montessori sample that were as similar as possible at baseline.⁶

Proficiency

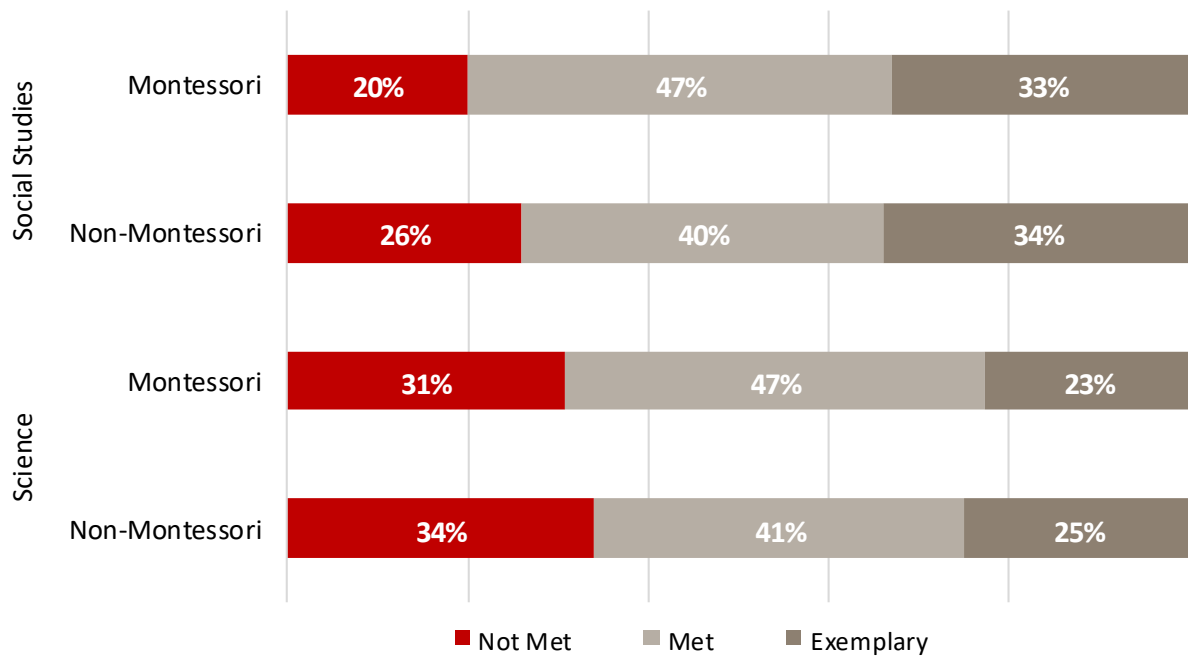
Before examining the results of the matched analyses, it is important to get a sense of overall Montessori student achievement. For the most recent year of data collection (2015-16), 52% of Montessori students met or exceeded the standards in ELA, and 46% met or exceeded the standards in math. See Figure 6. Montessori student performance was better for science and social studies as 70% and 80%, respectively, of Montessori students scored at or above the standards in these subjects, as can be seen in Figure 7. When compared to non-Montessori school students across the state, Montessori students were more likely to have met or exceeded the state standards in all four subjects.

Figure 6: Montessori and Non-Montessori Student Proficiency in Math and ELA (2015-16)



⁶ Given the stringent matching protocol, not all Montessori students could be matched. On average, 80% of Montessori students had at least one non-Montessori match. Montessori students with no matches were excluded from the study.

Figure 7: Montessori and Non-Montessori Student Proficiency in Social Studies and Science (2015-16)



Growth

The previous analyses only consider differences in Montessori and non-Montessori students in terms of 2015-16 proficiency. In the preferred analyses presented below, researchers analyzed test score growth, or how students’ scores changed from one year to the next. Further, these analyses examined standardized scale scores, which are more precise than proficiency levels.⁷ Montessori achievement growth was compared to two different groups: other public schools students across the state and non-Montessori students who were matched to Montessori students based on district, grade, demographic characteristics, and the previous years’ test scores.

Table 5 summarizes the results of these one-year growth models, which control for student grade and demographics. Outcomes for each year are compared to how students did in the previous academic year. A positive value in the table indicates that Montessori growth was higher than non-Montessori growth, whereas a negative value means that non-Montessori students exhibited greater achievement growth.

⁷ Another advantage of standardizing the test score values is that it more readily allows for comparisons across different exams. Given that South Carolina changed exams throughout this study from SC PASS (2012-13, 2013-14) to ACT Aspire (2014-15) to SC Ready (2015-16), the analyses here do not measure true growth in test scores from one year to the next. However, each of the exams should provide a proxy for student achievement in that subject and are used in the analyses to control for prior academic achievement.

Table 5: Student Achievement - Summary of Regressions: Montessori Indicator

	Comparison Group	ELA	Math	Writing	Science	Social Studies
2012-13 to 2013-14	State	0.05*	-0.01	0.07**	-0.03	-0.05
	Matched	0.07***	0.02	0.07**	-0.06*	-0.03
2013-14 to 2014-15	State	0.06*	0.07*	0.00	-0.01	0.05
	Matched	0.07***	0.07***	0.02	-0.01	0.08***
2014-15 to 2015-16	State	0.05	-0.02		0.05	0.08**
	Matched	0.08***	0.04***		0.07***	0.08**

Note: *** $p < 0.01$, ** $p < 0.05$, * $p < 0.1$. Values in the table represent the Montessori coefficient from multivariate OLS regressions.

According to Table 5, Montessori students consistently demonstrated greater achievement growth than non-Montessori students across all three years of analyses in ELA. When compared to the matched comparison students, Montessori students increased their test scores by .07 or .08 standard deviations more than non-Montessori students. While these effect sizes are small, the differences are statistically significant. Compared to all other public school students across the state, there are few meaningful differences in math growth. However, Montessori students exhibited greater growth when compared to matched non-Montessori students in the last two years of analyses. While the Montessori advantage in math is apparent in the more recent analyses, the opposite trend is evident for writing growth. Montessori students demonstrated statistically significant more growth in writing test scores from the 2012-13 to the 2013-14 school year. There was no statistically significant difference in growth for the following year.

The results for the science and social studies achievement are interesting. Montessori students exhibited .06 standard deviations less growth in science than the matched sample in 2013-14. This difference was statistically significant at the .10 level. Matched non-Montessori students also had higher growth than Montessori students in social studies, but it was not statistically significant. There was no difference in science achievement growth in 2014-15, whereas Montessori students achieved higher growth in science in 2015-16. Montessori students had higher growth for both of the final two years of the analysis in social studies when compared to the matched sample. It is important to remember that not all public school students take the science and social studies exam each year, unlike the ELA and math exams, so the samples included in the analyses differ year-to-year. It also is important to note that the effect sizes of the differences between Montessori and non-Montessori student achievement across the five subjects are generally small with all estimates less than one-tenth of a standard deviation.

Sub Group Analyses

Is Montessori education more “effective” for some students rather than others? Thus far, the results have examined Montessori students as a single group. To examine the possibility of differential effects of Montessori by student characteristics, researchers pooled the three years of growth together into one analysis and included interaction terms between the Montessori indicator and race, gender, poverty status, and the previous year’s test score (highest and lowest 20 percentiles).

The average marginal effects of participating in Montessori for different demographic and baseline test score groups are presented in Table 6. Positive values indicate that Montessori students with a particular demographic exhibited greater one-year achievement growth than matched non-Montessori students of that same demographic category between the 2013-14 to 2015-16 school years. The results indicate that low-income Montessori students exhibit more growth in ELA, math, and social studies than low-income non-Montessori students. These findings mirror the results for non-low income students. In terms of race, significant differences exist for black students in ELA and social studies, with Montessori students displaying greater growth. While white Montessori students achieved at greater levels than white non-Montessori students across all five subjects, there were no statistically significant differences for Hispanic and those in the “other race” category. The insignificant findings for Hispanic and the other race category may be partly due to smaller samples sizes for these groups. Both male and female Montessori students achieve at greater levels than their matched non-Montessori counterparts in ELA, math, and social studies.

Table 6: Subgroup Analysis– Average Marginal Effects

	<i>ELA</i>	<i>Math</i>	<i>Writing</i>	<i>Science</i>	<i>Social Studies</i>
Low Income	0.06***	0.04***	0.03	0.03	0.05**
Non-Low Income	0.08***	0.08***	0.03	0.01	0.10***
White	0.07***	0.08***	0.04*	0.03*	0.08***
Black	0.09***	0.01	0.00	0.01	0.06**
Hispanic	-0.01	0.04	0.16	-0.05	0.02
Other Race	0.08	0.08	-0.07	-0.03	0.09
Female	0.08***	0.06***	0.04*	0.02	0.07***
Male	0.07***	0.06***	0.02	0.02	0.07***
Lowest Test	0.07***	0.03	0.08**	0.00	0.06**
Highest Test	0.01	0.07**	-0.02	-0.01	0.04

*Note: *** $p < 0.01$, ** $p < 0.05$, * $p < 0.1$. Values in the table represent average marginal effects from multivariate OLS regressions that included interaction terms with the Montessori variable.*

Is the higher achievement growth of Montessori students limited to students who are naturally high achievers? The results in Table 6 suggest otherwise. While Montessori students who achieved at the 80th percentile or higher on the prior year’s exam scored significantly better than matched non-Montessori students only in math, Montessori students who scored at the 20th percentile or below on the baseline exam had statistically significantly higher one-year achievement growth in ELA, writing, and social studies than matched students who scored at the 20th percentile or below on the baseline exam.

Attendance & Behavior

To get an accurate causal estimate of the effect of Montessori education on attendance and behavior, researchers completed the same matching process as described above for the test score analyses. Students in grades PK to eighth were included in these analyses. After the matched sample was identified, the researchers performed ordinary least square regressions that adjusted for the previous year’s outcome, family income, race, gender, ESL status, special education status, and grade. See Table 7. Looking at the attendance results, one sees that Montessori students consistently demonstrated higher attendance than the non-Montessori matched comparison group after adjusting for the attendance rate in the previous year and student demographics. In each year of the analysis, the difference is approximately .05-.07 standard deviations and is statistically significant. Montessori students were less likely to have had in-school or out-of-school suspensions in 2015 and 2016 than non-Montessori students. In terms of discipline incidents, the results indicated that Montessori students were less likely to have any discipline incidents and had a smaller number of incidents on average when compared to the matched non-Montessori sample. These differences are statistically significant for both year of the analysis. While the differences in attendance and behavior outcomes between Montessori and non-Montessori matched students were often small, Montessori students consistently demonstrated statistically significant higher attendance and fewer discipline incidents.

Table 7: Student Attendance and Behavior– Summary of Regressions: Montessori Indicator

	<i>Comparison Group</i>	<i>Attendance Rate</i>	<i>Suspension</i>	<i>Any Discipline Incidents</i>	<i>Discipline Incident Count</i>
2012-13 to 2013-14	<i>Matched</i>	0.07***	-0.00		
2013-14 to 2014-15	<i>Matched</i>	0.05***	-0.02***	-0.05***	-0.12***
2014-15 to 2015-16	<i>Matched</i>	0.05***	-0.01***	-0.02***	-0.10***

Note: *** $p < 0.01$, ** $p < 0.05$, * $p < 0.1$. Values in the table represent the Montessori coefficient from multivariate OLS regressions.

Exploring the Impact of Public School Montessori on Affective Outcomes



Research Question Four: To what extent do South Carolina’s public school Montessori students differ from non-Montessori students on variables generally classed in the affective domain?

State databases provided the research team with data on student test scores, attendance, and behavior. While these are important outcomes, the research team also was interested in a number of other outcomes that are related to college and career readiness. To this end, researchers examined the relationship between participation in Montessori education and affective outcomes, including creativity, executive function, social skills, and work habits.

Since measures of these outcomes are not found in state databases, the research team selected and administered assessments of these constructs to a sample of Montessori and comparison non-Montessori students. By their nature, these outcomes are difficult to measure. Further, the number of valid and reliable measures available to the research team at the beginning of the study were limited. The design of this longitudinal study followed a cohort of students from age five to age eight, so it also was challenging to find consistent age-appropriate measures across time. With these limitations in mind, the research team used several different assessments to try to accurately measure the effect of Montessori education on these key outcomes.

As noted earlier, selection bias is major threat to evaluations of education programs. In the case of Montessori education, it is challenging to isolate the effect of participating in a Montessori program, as parents usually select into these programs. A primary task of the research team was to try to mitigate selection bias. Given limited resources, the research team was unable to follow the population of all Montessori students, so a sample was selected. Researchers chose a Montessori school with a “no choice” enrollment situation, where Montessori was the only option for parents wanting to enroll their children in public preschool in the district. Since all preschool students were placed in the Montessori program, selection bias may be lessened (but not eliminated). The research team also was able to verify that the Montessori school included in this part of the study was implementing a high fidelity Montessori program, as measured by programmatic implementation surveys and classroom observations.

After selecting the Montessori cohort, the research team chose a demographically similar public school in another region of the state to be the non-Montessori comparison school. Approximately 100 Montessori and 100 non-Montessori students were included in the analysis each year.

The research team administered a number of different measures across four general domains: executive function, social skills, work habits, and creativity. To examine how the Montessori students differed on these outcomes from the non-Montessori public school cohort, researchers used ordinary least squares (OLS) regression, while adjusting for student race, poverty status, ESL status, gender, and special education status. When appropriate, growth models, which included earlier outcome measures as covariates, were also estimated. In order to increase comparability, all outcome measures for the regression models were standardized to have a mean of zero and a standard deviation of one. This meant that the Montessori coefficient in the regression reflected how many standard deviations Montessori students were above or below non-Montessori students on that particular measure, after controlling for student demographics. Table 8 presents the regression coefficient, or effect size, for the Montessori indicator variable from the multivariate regressions.

Table 8: Summary of Montessori vs. Non-Montessori Differences

		2012-13	2013-14	2014-15	2015-16
Executive Function	Head, Toes, Knees, Shoulders	.01			
	NIH Toolbox		-0.13	0.39***	
	Minnesota Executive Function Scale				-0.13
	Behavior Rating Inventory of Executive Function	-0.13	-0.29**	0.03	
Social Skills	Student Inventory	.19	-.11	.05	
Work Habits	Student Inventory	.22	-.29**	-.02	
Creativity	Evaluation of Potential Creativity				0.28*

Note: No data are available for the cells with an X. Values in the table represent the Montessori coefficient from multivariate OLS regressions. *** $p < 0.01$, ** $p < 0.05$, * $p < 0.1$

Executive Function

Executive function is a set of cognitive processes that are necessary for the cognitive control of behavior—selecting and successfully monitoring behaviors that facilitate the attainment of chosen goals (Malenka et. al., 2009). Executive functions include basic cognitive processes, such as attentional control, cognitive inhibition, inhibitory control, working memory, and cognitive flexibility (Malenka et. al., 2009). In this study, several instruments were used to measure executive function in both Montessori and non-Montessori cohorts at various points.

When the cohort was aged five, the Head Toes Knees Shoulders (HTKS) assessment was used to measure executive function. The HTKS has been conceptualized as a measure of inhibitory control, working memory, and attention focusing (McClelland et. al., 2014; Ponitz et. al., 2008). When administered, children are asked by researchers to play a game in which they must do the opposite of what the researcher says. If children pass the head/toes part of the task, they complete an advanced trial where the knees and shoulders commands are added.

The two executive function measures in the National Institutes of Health (NIH) Toolbox were used in the two subsequent years. The NIH Toolbox Dimensional Change Card Sort (DCCS) Test directly measures cognitive flexibility (Slotkin et. al., 2012). The NIH Toolbox Flanker Inhibitory Control and Attention Test measures cognitive control of both thought and action (Slotkin et. al., 2012). These measures were administered to students by researchers with the aid of a computer and mouse.

The Minnesota Executive Function Scale (MEFS) was used in the last year of the study, when students in the cohort were approximately eight years old. It is a virtual card-sorting task administered individually to a child with the aid of an Apple iPad. The MEFS addresses progressively higher-level decision-making and executive functions through drag and drop responses scored by level of difficulty and response time (Carlson, 2017).

The Behavior Rating Inventory of Executive Function (BRIEF) is a measure of executive function for children and adolescents. In this study, teachers completed an inventory on all of their students during three years of the study. The

BRIEF questionnaire included approximately 80 items in eight non-overlapping clinical scales and two validity scales: Behavioral Regulation (Inhibit, Shift, and Emotional Control) and Metacognition (Initiate, Working Memory, Plan/Organize, Organization of Materials, and Monitor), as well as a Global Executive Composite score which takes into account all of the clinical scales and represents the child's overall executive function (Gioia, 2000).

Results-Executive Function

The HTKS assessment was administered to the Montessori and non-Montessori cohorts in the spring of 2013, when the cohort was approximately age five. After controlling for student demographics, Montessori student performance on the HTSK exam closely mirrored the performance of the non-Montessori students.

Both cohorts of students were tested with the NIH Toolbox in spring 2014 and spring 2015. There were no significant differences between the scores of Montessori students and non-Montessori students in 2014. However, Montessori students scored almost .4 standard deviations above non-Montessori students in 2015, a statistically significant result. Given that the cohorts received the NIH assessment in both the 2013-14 and 2014-15 school years, the researchers also examined how NIH scores changed from one year to the next. The 2013-14 NIH score was used as a “pre-test” covariate when examining the relationship between participating in the Montessori program in 2014-15 and the 2015 NIH score. The results from this analysis indicated that Montessori students exhibited significantly greater growth in executive function during the 2014-15 academic year than did the comparison students.

In spring 2016, students in both cohorts completed the MEFS assessment. After adjusting for student demographics, Montessori students scored .13 standard deviations below the comparison group, which was not a statistically significant difference.

On the BRIEF assessment, there were no statistically significant differences between the two groups in 2013 or 2015. In 2014, however, non-Montessori students had better total BRIEF score, a statistically significant result.⁸ While the results from the BRIEF assessment are suggestive, they should be interpreted with great caution. Unlike the HTSK, NIH Toolbox, and MEFS, students in Montessori and non-Montessori cohorts were not assessed by a common rater, but rather by the students' own teachers. In addition, both cohorts had different raters over time. The teachers who completed the BRIEF assessments may have had different interpretations of the questions or definitions of “often,” “sometimes,” or “never.” Since teachers only completed assessments for students in one cohort, it was difficult for researchers to compare across cohorts or even across time. Regardless, useful descriptive information, particularly for use by schools, can be gleaned from the BRIEF assessment.

Social Skills and Work Habits

Teachers also rated students on social skills and work habits using an inventory created by researchers at Lander University. The Rating Scale of Work Habits and Social Relationships for Young Children was based largely upon the developmental milestones of self-regulation detailed by Bronson (2000). The measure contained 17 Likert-scale response items; 8 related to social relationships and 9 to work habits. At the end of the scale, the teacher was asked to rate each

⁸ Originally, the BRIEF assessment was coded so that lower values indicated better executive function than higher values. This was changed in this analysis, so that the interpretation for this outcome would be consistent with the other outcomes in Table 8.

child's academic performance (Ervin et. al., 2010). After standardizing these measures, researchers performed OLS regressions while controlling for student demographics to examine the relationship between participating in Montessori and these three domains. This inventory had many of the same limitations of a teacher completed student inventory as did the BRIEF discussed above.

According to Table 8, Montessori students were rated as having better social skills than the non-Montessori comparison group in 2013 and 2015, after controlling for student demographics, but these differences were not statistically significant. There is one statistically significant difference between Montessori and non-Montessori students in terms of work habits. According to teacher reports on the student inventories in 2014, Montessori students were rated by their teachers approximately .3 standard deviations below non-Montessori students on work habits, a statistically significant result.

Creativity

Creativity is commonly acknowledged as the ability to produce original works (Paulus & Nijstad 2003; Runco & Jaeger 2012). Considered as one of the most important skills for childhood development, creativity contributes to an individual's problem-solving and innovative ability, which play a crucial role in personal growth and professional development (Besançon & Lubart 2008).

The Evaluation of Potential Creativity (EPoC) measures creative potential through examining both divergent-exploratory thinking and convergent-integrative thinking. This EPoC test is standardized (same task materials, same time allotted, same instructions, etc.) and requires students to produce work (i.e., drawings) based on a specific set of stimuli. Researchers have students complete one divergent-exploratory task and one convergent-integrative task during an initial session, followed by another divergent-exploratory task and convergent-integrative task to complete in a second session approximately one to two weeks later. This allows the child to show his/her creative potential on two occasions (two different days) with two slightly different tasks for divergence and convergence (Lubart, 2011).

The EPoC was administered to students in the Montessori and non-Montessori cohorts during the last year of the study. According to Table 8, Montessori students scored .28 standard deviations higher than non-Montessori students on the total EPoC score. This Montessori advantage is statistically significant at the .10 level. Additional analyses indicated that this result was driven by Montessori students demonstrating better performance on the divergent-exploratory section of the EPoC assessment.

Teacher Perceptions of Montessori's Impact on Students and Teaching



Research Question Five: What are the demographic characteristics of public school Montessori teachers in South Carolina? What are teachers' perspectives on the impact of Montessori on their students and their teaching?

For both years of administration (academic year 2013-14 and academic year 2015-16), researchers surveyed the entire population of public Montessori lead teachers. The survey administered in academic year 2013-14 included 57 questions and had a 71% response rate (186 out of 261). The survey administered in academic year 2015-16 included 80 questions and had a 72% response rate (192 out of 268). The response rate for both years is substantially higher than the average survey response rate and provides for results that should be quite representative of the population of Montessori teachers.

The findings presented within this report are grouped by survey category. Some of the question scales have been slightly adjusted to help in the summarizing of data.

Educator Demographics

More than half of those surveyed have been teaching for 10 years or more; however, only 27% have been teaching in the Montessori classroom for 10 years or more. Teachers have been in their current Montessori teaching positions an average of 6 years. The majority have master's degrees (67%), while 32% have bachelor's degrees and 1% have a doctorate degree. Nearly all educators who responded to the surveys hold a Montessori credential for the level they currently teach or will within the next year (95%). The most popular program from which educators earned their credential was the American Montessori Society, and the most credentialed levels were early childhood and lower elementary.

Training and Professional Development

Most Montessori educators report that they are observed in their classroom at least two times per school year for at least 30 minutes (83%) and agree that they are provided helpful feedback after they are observed (63%).

Slightly less than half of educators report that their school or district implements two or more Montessori teacher trainings every year (48%). Overall, 71% of educators report that they receive enough professional development to stay current in their field. Most educators report that their biggest professional development need is Montessori-specific curriculum and lessons instruction. Others would like to have more training on classroom management strategies, time management, as well as more opportunities for networking and/or collaboration.

Job Satisfaction and Future Career Plans

Most Montessori educators feel supported to some extent in their school (75%) and agree that their principal has adequate knowledge about Montessori (77%). Nearly all educators report loving or liking their job as a Montessori teacher (98%). This is substantially higher than the 89% of South Carolina educators on the 2015 Report Card Teacher Survey who strongly agreed or agreed that they were satisfied with their current working conditions (EOC, 2016). Most survey respondents plan to remain a Montessori teacher (84%). Very few plan to move to a non-Montessori classroom (3%) or become a Montessori administrator (10%).

Classroom Organization

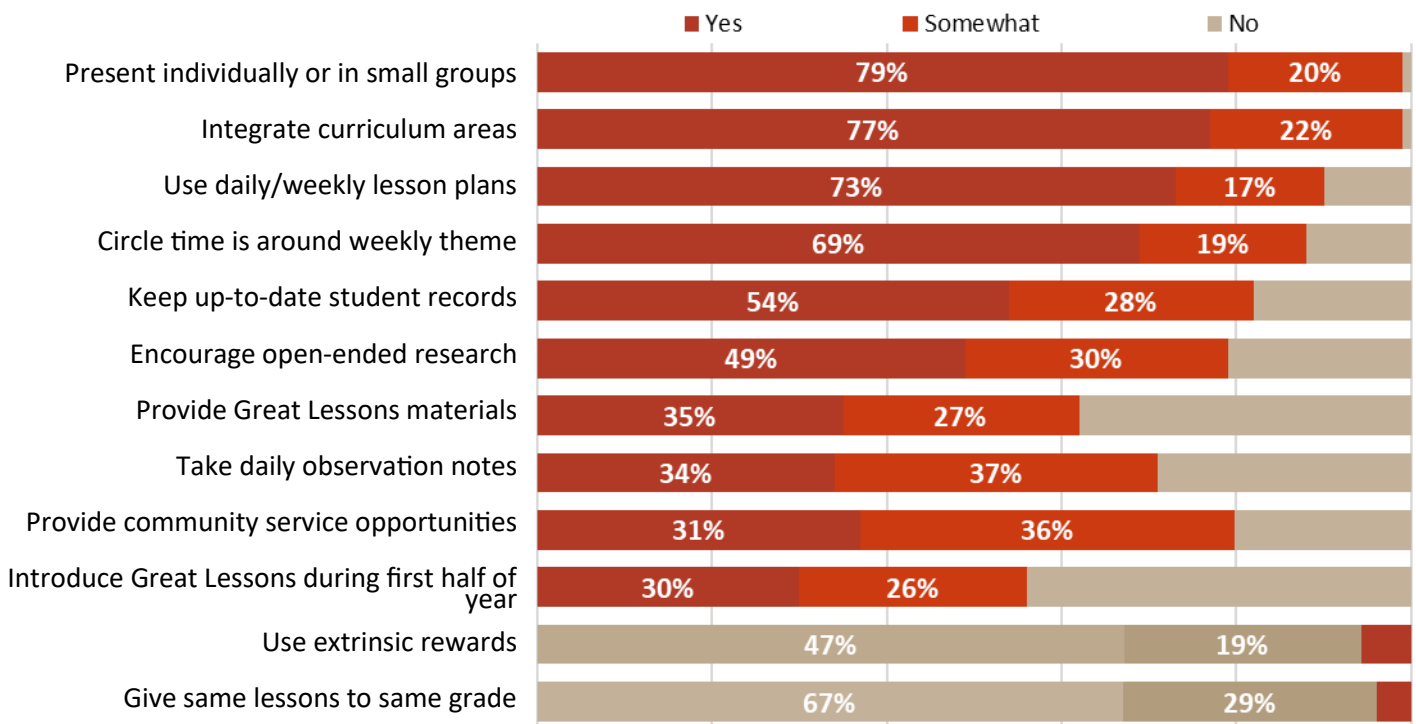
Most primary and elementary level educators report that their classrooms are appropriately multi-aged according to the Montessori Model (81%), while only half of middle level educators do. Approximately 84% of educators agree to some extent that they can keep up with the multiple ages/levels of children in their classroom. The majority of educators report having between 21 and 24 students enrolled in their classrooms. Nearly all educators have a full or part time teaching assistant (90%).

Educator Practices in the Classroom

Montessori educators present an average of 6 lessons during the typical school day, and more than half report that they have all or most of the key Montessori materials necessary to present lessons appropriately (65%). Most educators use the Montessori curriculum/sequence (training albums) as their foremost teaching guide (80%); however, 46% report that their school makes them use a pacing guide to some extent to prepare students for benchmark tests. Nearly all educators completely agree or somewhat agree that they are able to implement authentic Montessori curriculum/lessons while incorporating South Carolina state standards.

Slightly more than half report that their school uses a specially created Montessori report card (56%). See Figure 8 for more information on the frequency of use with regards to specific practices employed by educators within their classrooms.

Figure 8: Use of Educational Practices in the Montessori Classroom

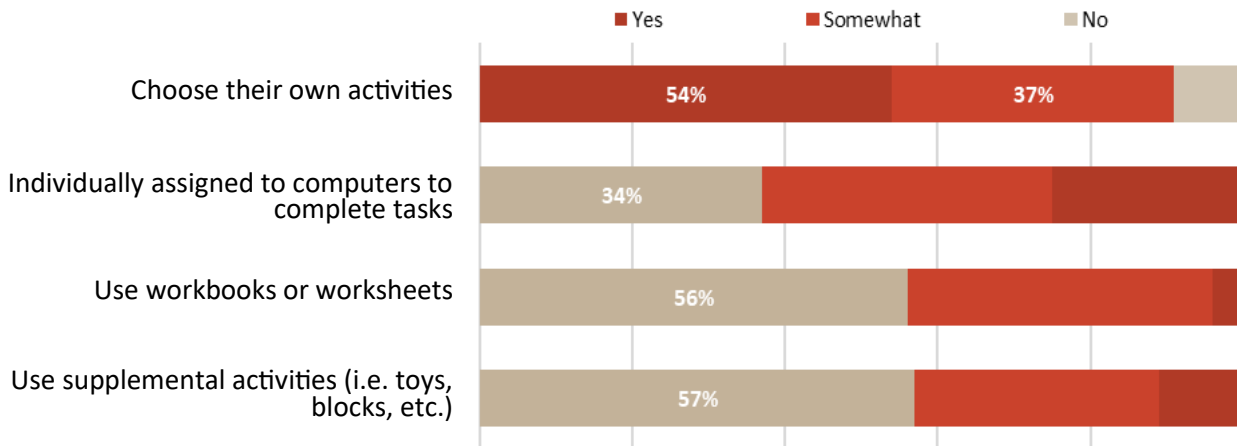


Note: the last two practices are contrary to Montessori principles and their response values are therefore inverted

Student Learning and Outcomes

While the majority of educators report that their students are working with Montessori materials most of the time (70%), there are varying levels of consistency with regards to the typical Montessori experiences their students usually have in the classroom. For more information on these experiences, see Figure 9.

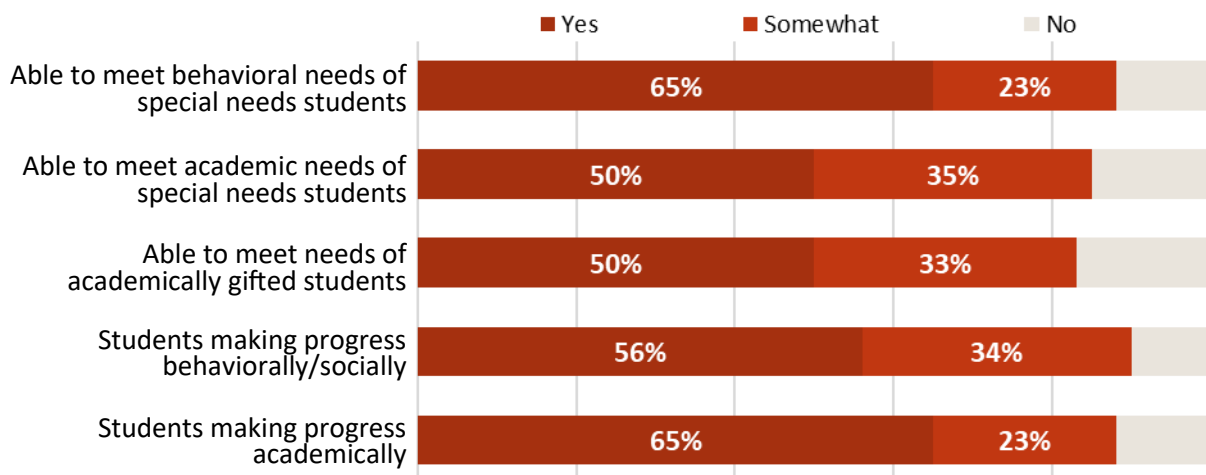
Figure 9: Student Experiences in the Montessori Classroom



Note: the last three experiences are atypical in an authentic Montessori classroom and their response values are therefore inverted

The majority of educators agree to some extent that, on the whole, their students are making steady progress and that they are able to meet the needs of their academically gifted and/or special needs students. See Figure 10 for more detail on specific student outcomes.

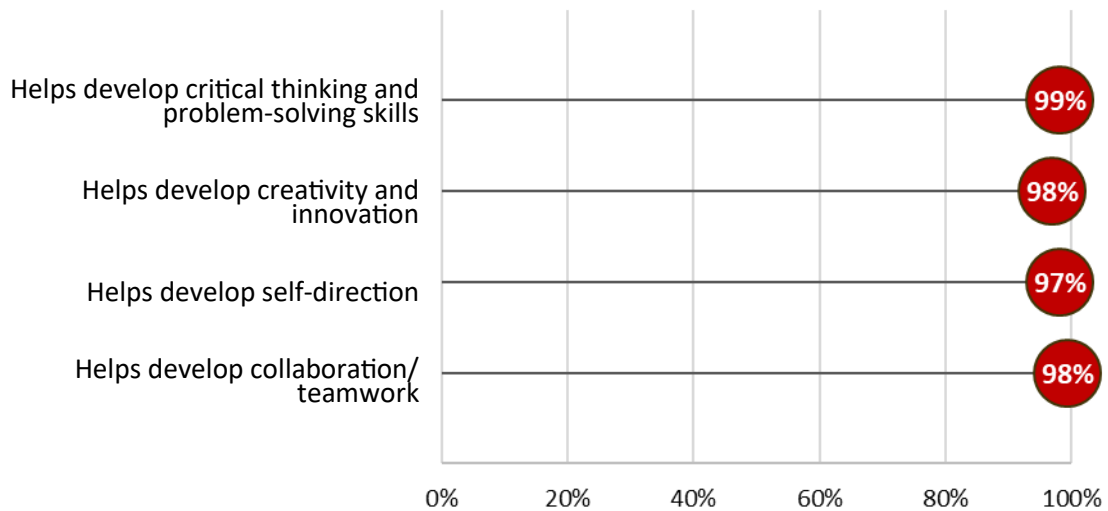
Figure 10: Montessori Student Learning and Outcomes



Montessori and the Skills of the South Carolina Graduate

In an effort to align public education in South Carolina to a common goal, the Board of Education adopted TransformSC's Profile of the South Carolina Graduate as its mission in the spring of 2015. As such, in the survey administered during academic year 2015-16, researchers included a set of questions related to Montessori education's impact on the development of many of the skills cited within the Profile of the South Carolina Graduate. These results are presented in Figure 11. There is widespread agreement from Montessori teachers that Montessori education promotes the skills noted in the Profile of the South Carolina Graduate.

Figure 11: Educators Who Strongly Agree or Agree that Montessori Has a Positive Impact on the Skills of the SC Graduate



Authenticity of the Montessori Program

Slightly over half of all survey respondents agree that, to some extent, their school's Montessori program authenticity is decreasing each year. Most educators report making slight modifications to Montessori educational classroom practices (63%), while 30% report making moderate modifications or extensive modifications. The majority of educators report that testing requirements have the largest impact on their ability to implement authentic Montessori. Despite these challenges, most educators believe that Montessori education in South Carolina still has the potential to be sustained and/or grow.

Conclusions and Discussion

Since the establishment of the state's first public Montessori program at Walker Gamble School in the Clarendon 3 school district in the mid-1990s, South Carolina has been on the cutting edge of public Montessori. Yet, despite the growth and popularity of Montessori education in the state and across the country, there has been a dearth of research on the fidelity of Montessori programs in the public sector and the effect of Montessori on student outcomes. To analyze these important questions, the Riley Institute developed and implemented the most comprehensive evaluation of public Montessori to date. This evaluation provides insight on the impact of public Montessori on diverse stakeholders.

Through the efforts of state, district, and school officials, South Carolina is a leader in public Montessori, and this study demonstrates that public Montessori continues to grow throughout the state in terms of the number of Montessori programs and student enrollment. While the teacher survey results indicate that there is some tension between the Montessori model and the standards and accountability movement, classroom observation and principal surveys indicate that most public Montessori programs are implementing the Montessori model with fidelity.

For the impact study, researchers matched Montessori students to non-Montessori students with the same demographics and similar baseline academic performance. These matched analyses provided evidence that Montessori students experienced greater achievement growth in ELA, math, and social studies. Further, the benefits of Montessori extend beyond standardized test scores, as Montessori students also demonstrated better school attendance and behavior. The results for affective outcomes were mixed, but Montessori students had higher levels of creativity and executive function in some years of the evaluation.

Some possible reasons for the positive Montessori effects seen in this study stem directly from the core elements of the Montessori philosophy and method, which have remained relatively unchanged for over 100 years. Many of these core practices have been researched independently and found to be solid strategies for yielding positive outcomes for students. In the Montessori model, however, they are bundled into one instructional package, complementing each other as they are guided by the Montessori philosophy of how children develop and learn.

Like any evaluation of this kind, this study is not without its limitations. In terms of fidelity to the model, principal survey scores were sometimes inconsistent with the classroom observation scores. For the impact analyses, the major challenge was selection bias. The research team employed exact matching for the achievement, attendance, and behavior outcome analyses to create apples-to-apples comparisons, and a "no choice" Montessori program at entry for three and four year-olds was selected for the cohort analyses. Despite the best efforts of the research team, selection bias could still exist. Finally, the research team faced a host of challenges regarding measurement of outcomes. The state-mandated standardized testing regime changed three times over the course of this study. Additionally, while there is general agreement that affective outcomes are critically important, there is still debate regarding the best way to measure them. In this evaluation, researchers used a variety of measures to assess affective outcomes, none of which were perfect.

This evaluation provided considerable evidence of a Montessori advantage. However, the research team was particularly interested in the effect of Montessori on education inequalities. Montessori education is often thought of as an elite approach to education for privileged students, primarily available in the private sector. However, because of the promise the model has offered to students across the world for over 100 years, considerable investment was made in South Carolina to implement Montessori in public schools across the state. These schools, most of them classified as Title I,

serve large numbers of low-income and minority students in often rural and poverty-stricken areas. The question of how these students perform and whether or not investment in Montessori has paid off for these students looms large.

This study attempted to answer these and other questions around the ability of Montessori education in the public sector to moderate the effects of poverty on students. This study found that public Montessori is not limited to high-income, primarily white students. In fact, low-income students and non-white students make up 54% and 45%, respectively, of all Montessori students in public Montessori programs in South Carolina. However, within district analyses demonstrated that white and higher income students may be overrepresented in public Montessori programs. Nonetheless, it remained an open question whether the Montessori advantages in test score growth found in the general analyses were wide-ranging. The sub-group analyses presented in this evaluation provide evidence of the egalitarian possibilities of Montessori education. Low-income students and low-achieving students seem to benefit from Montessori. While white Montessori students exhibit higher growth than similar students in the matched comparison group, so do black Montessori students. This evaluation by the Riley Institute provides evidence that public Montessori has appeal to a broad range of parents in South Carolina, and it appears that the benefits of Montessori education are wide-ranging as well.

Acknowledgements

The authors thank the Self Family Foundation and the South Carolina Education Oversight Committee for providing funding for this evaluation. The authors also thank the children, parents, teachers, and school administrators for their participation and several groups and individuals who provided assistance throughout the study: the South Carolina State Department of Education; Dr. Angela Murray with the American Montessori Society; Dr. Steve Hughes with the Association Montessori Internationale global research committee; Jackie Cossentino and Katie Brown with the National Center for Montessori in the Public Sector; and numerous student research assistants, including Delia Allen, Elizabeth Bundy, Maddison Hall, Amanda Michalski, Julia Roberts, Hannah Warren, and Daniel Zhang.

This evaluation was carried out in accordance with the recommendations in the guidelines for human research of the Institutional Review Board at Furman University, which approved the study protocol. Parents or guardians provided written consent for all participation of minors.

The content of this report is solely the responsibility of the authors and does not necessarily reflect any official positions of the funding organizations or Furman University.

Future reports from this evaluation will be available at furman.edu/Montessori.

References

- Ansari, A. & Winsler, A. (2014). Montessori Public School Pre-K Programs and the School Readiness of Low-Income Black and Latino Children. *Journal of Educational Psychology*, 106(4), 1066-1079.
- Besançon, M. & Lubart, T. (2008). Differences in the development of creative competencies in children schooled in diverse learning environments. *Learning and Individual Differences*, 18(4), 381-389.
- Bronson, M. (2000). *Self-regulation in early childhood*. New York: Guilford Press.
- Byun, W., Blair, S., & Pate, R. (2013). Objectively measured sedentary behavior in preschool children: comparison between Montessori and traditional preschools. *International Journal of Behavioral Nutrition and Physical Activity*, 10(2).
- Cameron Ponitz C. E., McClelland M. M., Jewkes A. M., Connor C. M., Farris C. L., & Morrison F. J. (2008). Touch your toes! Developing a direct measure of behavioral regulation in early childhood. *Early Child. Res. Q.* 23, 141–158.
- Carlson, S. M. (2017). *Minnesota Executive Function Scale Technical Report*. St. Paul: Reflection Sciences.
- Center for Research on Education Outcomes (2015). *Urban Charter School Study Report on 41 Regions*. [online] Stanford: Stanford University. Available at: <http://urbancharters.stanford.edu/download/Urban%20Charter%20School%20Study%20Report%20on%2041%20Regions.pdf> [Accessed 28 Nov. 2017].
- Center for Research on Education Outcomes (2009). *Multiple choice: Charter school performance in 16 states*. [online] Stanford: Stanford University. Available at: http://credo.stanford.edu/reports/MULTIPLE_CHOICE_CREDO.pdf
- Davis, D. H. & Raymond, M. (2012). Choices for Studying Choice: Assessing Charter School Effectiveness Using Two Quasi-Experimental Methods. *Economics of Education Review* 31(2), 225–36.
- Dohrmann, K., Nishida, T., Gartner, A., Lipsky, D., & Grimm, K. (2007). High School Outcomes for Students in a Public Montessori Program. *Journal of Research in Childhood Education*, 22(2), 205-217.
- Education Oversight Committee (2016). *Results from the 2015 Parent Survey*. Columbia, 31.
- Ervin, B., Walsh, P. D., & Mecca, M. E. (2010). A Three-Year Study of Self-Regulation in Montessori and Non-Montessori Classrooms. *Montessori Life*, (2), 22-31.
- Gioia, G., Isquith, P., Guy, S., & Kenworthy, L. (2000). TEST REVIEW Behavior Rating Inventory of Executive Function. *Child Neuropsychology (Neuropsychology, Development and Cognition: Section C)*, 6(3), 235-238.
- Hanson, B. E. E. (2009). *An Exploratory Study on the Effectiveness of Montessori Constructs and Traditional Teaching Methodology as Change Agents to Increase Academic Achievement of Elementary Black Students*. Unpublished doctoral dissertation. Capella University.
- Lillard, A. S., & Else-Quest, N. (2006). Evaluating Montessori Education. *Science*, 313(5795), 1893-1894.
- Lillard, A. S. (2012). Preschool children's development in classic Montessori, supplemented Montessori, and conventional programs. *Journal of School Psychology*, 50(3), pp.379-401.

- Lillard, A. S. (2017). *Montessori: The Science behind the Genius*, 3rd ed. New York, NY: Oxford University Press.
- Lillard, A. S., Heise, M., Richey, E., Tong, X., Hart, A., & Bray, P. Montessori Preschool Elevates and Equalizes Child Outcomes: A Longitudinal Study. *Frontiers*, 25 Sept. 2017, www.frontiersin.org/articles/10.3389/fpsyg.2017.01783/full.
- Lopata, C., Wallace, N., & Finn, K. (2005). Comparison of Academic Achievement Between Montessori and Traditional Education Programs. *Journal of Research in Childhood Education*, 20(1), 5-13.
- Lubart, T., Laud B., and Baptiste, B. (2011). *EPoC: Évaluation Du Potentiel Créatif Des Enfants*. Paris: Editions Hogrefe France.
- Malenka, R.C., Nestler, E.J., & Hyman, S.E. (2009). Widely Projecting Systems: Monoamines, Acetylcholine, and Orexin In A. Sydor & R.Y. Brown (Eds.) *Molecular Neuropharmacology: A Foundation for Clinical Neuroscience*, 2nd ed. (155–157). New York: McGraw-Hill Medical.
- McClelland, M. M., Cameron, C. E., Duncan, R., Bowles, R. P., Acock, A. C., Miao, A., & Pratt, M. E. (2014). Predictors of early growth in academic achievement: The head-toes-knees-shoulders task. *Frontiers in Psychology*, 5, 1-14.
- Paulus, P. B. & Nijstad, B. A. (2003). *Group Creativity: Innovation through Collaboration*. New York: Oxford University Press.
- Peng, H.H. & Md-Yunus, S. (2014). Do children in Montessori schools perform better in the achievement test? A Taiwanese perspective. *Int. J. Early Child.* 46, 299–311.
- Pianta, R. C., & La Paro, K. M. (2003). *Classroom Assessment Scoring System: Guide and Training Manual*. University of Virginia, Charlottesville. Unpublished manuscript.
- Rathunde, K. & Csikszentmihalyi, M. (2005). Middle school students' motivation and quality of experience: a comparison of Montessori and Traditional school environments. *American Journal of Education*, 111(3), 341-371.
- Runco, M. & Jaeger, G. (2012). The Standard Definition of Creativity. *Creativity Research Journal*, 24(1), 92–96.
- Slotkin, J., Kallen, M., Griffith, J. Magasi, S. Salsman, J., Nowinski, C. & Gershon, R. (2012). *NIH Toolbox Technical Manual*. Bethesda: National Institutes of Health.

Websites Cited

American Montessori Society: <https://amshq.org>

National Center for Montessori in the Public Sector: <https://www.public-montessori.org/>

Study Authors and Contributors

Dr. Brooke Culclasure (Ph.D. University of Virginia)



served as the study's principal investigator and oversaw all aspects of the study. Dr. Culclasure is the Research Director of the Riley Institute's Center for Education Policy and Leadership, housed at Furman University.

Dr. David J. Fleming (Ph.D. University of Wisconsin)



served as the study's senior statistician and co-investigator. Dr. Fleming is an Associate Professor in the Politics and International Affairs Department at Furman University and a Senior Researcher with the Riley Institute.

Dr. Ginny Riga (Ed.D. University of South Carolina) served



as the Montessori expert consultant for the study and assisted with the measurement of model fidelity. Dr. Riga currently works in the South Carolina State Department of Education as the Montessori Consultant in the Office of Personalized Learning.

Alexis Sprogis assisted with data collection, project



logistics, and reporting. She is a Research Specialist in the Riley Institute's Center for Education Policy and Leadership, housed at Furman University.

Dr. Lorraine DeJong, Kelly Gregory, and Rashmi Janakiraman served as data collectors in schools. Montessori classroom observers included **Catherine Stevenson Beemer, Gail Hornsby, Stacy Hudson, Elaine Kalagher, Jo-Anne Long, Russell Long, Teresa Noble, and Diana Zellner.**

Suggested Citation

Culclasure, B., Fleming, D.J., Riga, G., & Sprogis, A. (2018). An Evaluation of Montessori Education in South Carolina's Public Schools. The Riley Institute at Furman University. Unpublished manuscript.



Leadership, Knowledge, Impact.

The Riley Institute at Furman broadens student and community perspective about issues critical to South Carolina's progress. It builds and engages present and future leaders, creates and shares data-supported information about the state's core challenges, and links the leadership body to sustainable solutions.

Launched in 1999, the Institute is named for former South Carolina governor and former United States Secretary of Education Richard W. (Dick) Riley. It is committed to nonpartisanship in all it does and to a rhetoric-free, facts-based approach to change.

The Riley Institute's research group promotes evidence informed education practices and supports organizations that serve children and families across South Carolina. Part of the Institute's Center for Education Policy and Leadership, the group conducts in-depth research and evaluation studies to support organizational decision-making and practice. It also builds internal evaluation capacity among organizations serving children and families so that outcomes are maximized for citizens across the state.

For more information, please visit riley.furman.edu

