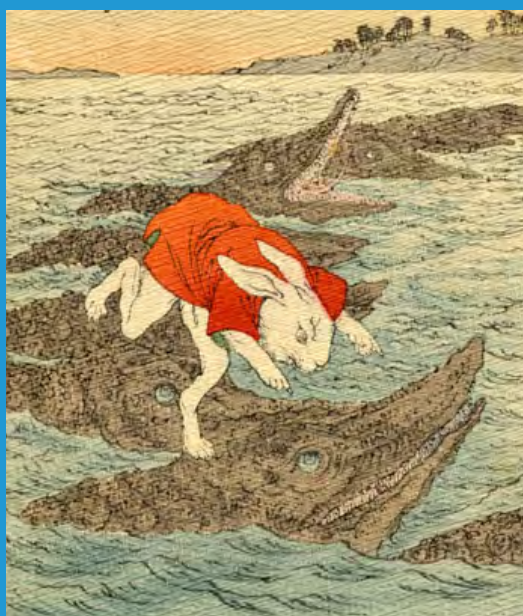
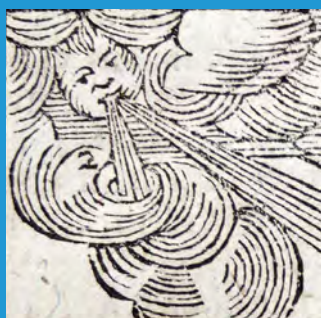


International Library of Children's Literature, National Diet Library

国立国会図書館 国際子ども図書館

Children's books link the world and open up the future.



Based on the philosophy “**Children’s books link the world and open up the future!**” the International Library of Children’s Literature (ILCL), a branch of the National Diet Library (NDL), was established.

The ILCL is a national library based on the National Library Law, dedicated to children’s books, which provides internationally linked library services for children’s literature published in Japan and abroad.

The ILCL formulated the Basic Plan for the International Library of Children’s Literature 2021-2025 in March 2021, which defines its mission and basic roles as follows:

Mission

For all children, reading activities are “indispensable to learn languages, to cultivate sensitivity, to heighten power of expression, to enrich creativity and to acquire power for living life more deeply” (Act on Promotion of Children’s Reading).

In a form that responds to the changes in the environment surrounding children and libraries in an increasingly digital society, the ILCL has a mission to support activities and research related to children’s books by using its abundant domestic and foreign materials and information resources.

Role

The ILCL fulfills the following three basic roles.



Role as a library dedicated to children's books

The ILCL acquires, preserves, and makes available a wide range of Japanese and foreign children’s books and related materials. By providing professional information on children’s books, it also supports a variety of programs related to children’s books and reading.



Role as a place where children encounter books

Not only at the ILCL itself, but also through the internet and other libraries nearby, the ILCL gives every child the opportunity to become familiar with libraries and reading.



Role as a museum of children's books

The ILCL will realize the library as a place where people can enjoy culture in a comprehensive manner, taking advantage of electronic exhibitions provided via the internet and the unique characteristics of its historical building located in Ueno, in addition to the Museum.



Role as a library dedicated to children’s books

Enrichment of collection

- The ILCL acquires and preserves an extensive collection of children’s books (defined as materials intended primarily for users aged up to 18 years) published in Japan, based on the legal deposit system, under which publishers are required by law to furnish a copy of every new publication to the NDL. The ILCL has collected and preserved an extensive collection of school textbooks since FY 2002. In addition, the ILCL collects and houses children’s books and related resources from about 160 countries and regions through purchases, international exchanges and donations.
- The ILCL promotes the digitization of its collections to support reading activities and research.

Special Materials and Collections

- Nobumasa Ikeda Collection
- Winnington-Ingram Collection
- Children’s Book Collection of the Gordon W. Prange Collection (available in the NDL Digital Collections)

Providing information on children’s books

- NDL Search allows you to centrally search for materials of major related organizations that hold children’s books.
- We are expanding the additional information available as bibliographic data, such as information on the outlines of books, on Japanese children’s books translated and published in foreign languages, etc.
- By using our specialized knowledge based on experience with references related to children’s books, we introduce how to search for information related to children’s books, etc.



NDL Search
<https://iss.ndl.go.jp/?locale=en>



NDL Online
<https://ndlonline.ndl.go.jp/>



RESEARCH NAVI
<https://rnavi.ndl.go.jp/en/index.html>

Support for children’s service personnel

- We provide information on children’s books such as Japanese and foreign children’s literature awards.
- By holding professional training programs and meetings, we help children’s service personnel to improve their expertise and also provide a place for information exchange. We conduct online professional training programs, so that children service personnel nationwide can take the course.
- We dispatch our staff to basic training programs on children’s books and services.
- By accepting trainees of related organizations in Japan and abroad, we support human resource development.



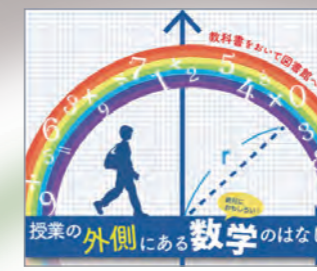
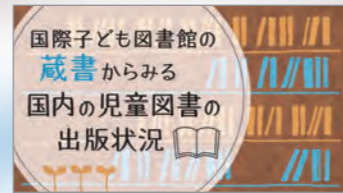
Promotion of children’s reading activities
<https://www.kodomo.go.jp/english/promotion/index.html>



Newsletters via email (in Japanese)
<https://www.kodomo.go.jp/about/mailmagazine/index.html>

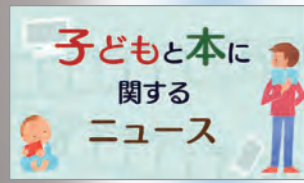
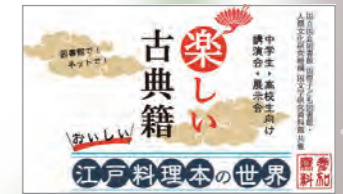
Cooperation and public relations with related organizations

- The ILCL participates in international conferences such as the IFLA General Conference and Assembly and IBBY International Congress, etc.
- We hold exhibitions, lectures and other events in collaboration with related organizations.
- We carry out various projects in cooperation with cultural and educational institutions in and around the Ueno area.



Role as a place where children encounter books

- ▶ Provide an opportunity for children to interact with books and become familiar with the library and reading.



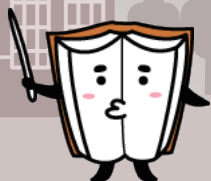
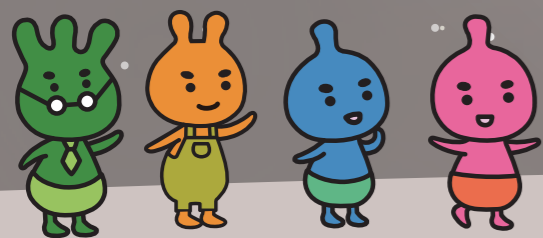
Role as a library dedicated to children's books

- ▶ Collect, store, and provide children's books and provide specialized information.



Role as a museum of children's books

- ▶ Provide a place where you can get to know the culture comprehensively through exhibitions, electronic exhibitions and historic building.





Role as a place where children encounter books

Providing information to tempt children into reading

- National Diet Library Kids' Page ... This website provides information about the National Diet Library.
- ILCL Online Public Access Catalog for Kids ... Using ILCL OPAC for Kids, children can search materials in the ILCL by themselves.



National Diet Library Kids' Page (in Japanese)
<https://www.kodomo.go.jp/kids/>



ILCL Online Public Access Catalog for Kids (in Japanese)
<https://iss.ndl.go.jp/children/top/>

Supporting children's reading activities at other libraries

- We provide book lists of past small themed exhibitions according to seasons, and information about books introduced at events, on the ILCL website.
- As support for school libraries, we provide the Book Sets Lending Service for School Libraries, which lends children's books including foreign books.
- We loan public libraries the book set of the exhibition "The World through Picture Books" led by the IFLA section Libraries for Children and Young Adults.

Activities at the ILCL

- ILCL houses rooms for children of/under elementary school age and the Teens' Research Room for adolescents of junior high/high school age.
- We hold nursery rhyme and picture book readings, story hour for children and events for adolescents of junior high/high school age.
- We hold different kinds of library tours according to the age of participants, and research practice programs for adolescents of junior high/high school age as an opportunity to experience research activities.
- We hold library tours for children with special needs and exhibit books for persons with disabilities and books for understanding disability.



Library tours for children



Role as a museum of children's books

Exhibitions

- We hold various attractive, themed exhibitions and exhibitions of our large collection of foreign children's books. Small themed exhibitions are also held in other rooms.
- We provide digital exhibitions, which anyone can visit, to promote children's books and to introduce Japanese children's books globally.

A library as a place to become familiar with culture

- Taking advantage of the appeal of our buildings as historic structures and cooperating with nearby cultural facilities, we provide opportunities to enjoy culture such as music and art with children's books.
- We hold exhibitions about the ILCL's buildings and its history to deepen understanding of the ILCL. We provide a virtual tour with a 360° panoramic view.



"Concert for children" in cooperation with the Tokyo Bunka Kaikan

Past Exhibitions
https://www.kodomo.go.jp/english/event/exhibition/past_exb.html



Past Events
https://www.kodomo.go.jp/english/event/past_evt.html



History

From the Imperial Library to the International Library of Children's Literature

This western, Renaissance-style building of the Meiji era, designated as a historic building by the Tokyo Metropolitan Government, was first constructed in 1906 as the Imperial Library. In 1929 (Showa era), some additional construction work was done.

After World War II, the Imperial Library ceased to exist, and in 1947, it was renamed the National Library. In 1948, the National Diet Library was established, and this library was reorganized as its branch. In 2000, the building was reborn as the International Library of Children's Literature (ILCL).



Chronology

Nov. 1995	Report of the investigation committee on establishing a new facility of the NDL facility to provide children's books and others submitted
May 1996	"Basic Plan of the International Library of Children's Literature (ILCL)" formulated
Jan. 2000	ILCL officially founded
May 2000	ILCL partly opened to the public (Phase I)
May 2002	ILCL fully opened
Oct. 2008	Number of visitors reached one million.
Mar. 2011	"Second Basic Plan for the ILCL" formulated
Sep. 2015	Arch Building opened
Mar. 2016	ILCL fully renewed
May 2019	Number of visitors reached two million
Mar. 2021	"Basic Plan for the International Library of Children's Literature 2021-2025" formulated

The ILCL in Numbers from April 2018 to March 2019 (as of March 31, 2019)

*The latest data before the spread of COVID-19

ILCL Collection Statistics (as of March 31, 2021)	Japanese books (Volumes)	324,623
	Foreign books (Volumes)	122,641
	Japanese magazines (titles)	1,872
	Foreign magazines (titles)	191
Days open		285
Number of visitors		143,241
	Under 15 years old	30,285
Circulation		29,281
Photoduplication		7,050
Reference services	Document Reference	135
	Telephone Reference	1,063
	Under 18 years old	1
	Onsite reference	17,173
Lending service	Under 18 years old	2,031
	Mutual Lending among Branch Libraries	11
	Interlibrary Loan	267
	Book-sets Lending Service for School Libraries	7,602
Guided Tour	Exhibit-sets lending Service	1,831
		219
Website Access	Top page (Japanese/English)	322,099
Building (as of March 31, 2021)	Ground floor	7,733 square meters
	Brick Building Total floor area	6,672 square meters
	Stack capacity	0.4 million volumes
	Arch Building Total floor area	6,184 square meters
	Stack capacity	0.65 million volumes



Brick Building The Brick Building, which was originally built as the Imperial Library, was renovated for opening as the ILCL in 2000. As a leading example of Renaissance-style Western architecture from the Meiji Era (1868-1912), it has been designated a selected historic structure by the Tokyo Metropolitan Government.



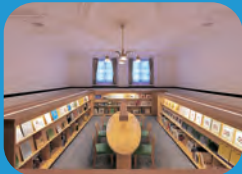
Arch Building Across the courtyard from the Brick Building, the Arch Building was built in 2015. The building is shaped in a gentle arc.



Children's Library
This reading room, mainly for children up to elementary school age, contains children's literature published in Japan. Small themed exhibitions are also held according to seasons. /Brick Building 1F



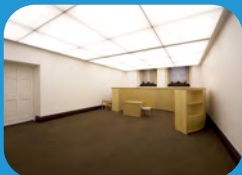
Researchers' Reading Room
This is the primary access point for researchers seeking to use the children's literature collection of the ILCL. Users are required to fill in the application form to access this room and to use materials stored in the closed stacks. /Arch Building 2F



Meet the World
This room provides children with materials on the geography, history, and folklore of various countries and regions. Picture books and story books in foreign languages are also available. /Brick Building 1F



Grand Staircase
The staircase rails, thick wooden doors and chandelier conveying the flavor of the Meiji Era can be seen. /Brick Building



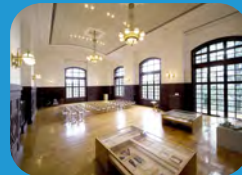
Story Hour Room
Story hour for children and nursery rhyme and picture book readings are held here. /Brick Building 1F



Museum
Exhibitions of children's literature are held here. /Brick Building 3F



Gallery of Children's Literature
Materials which demonstrate the history of Japanese children's books from the Meiji Era to the present are exhibited. /Brick Building 2F



Hall
Concerts, an exhibition introducing the ILCL and other events are held here. /Brick Building 3F



Teens' Research Room
Materials mainly useful for teens' research, and assistance with research-oriented learning, are available here. A research practice program for teenagers is also provided (advance reservation). /Brick Building 2F



Common Room
This is a room for resting, eating and nursing. /Brick Building 1F

International Library of Children's Literature

12- 49 Ueno Park, Taito-ku.Tokyo 110-0007, Japan

TEL

+81-3-3827-2053

FAX

+81-3-3827-2043

Website

<https://www.kodomo.go.jp/>

Newsletters via email

To subscribe,visit the website

Hours

9:30 a.m. – 5:00 p.m.

Closed

Mondays, National holidays (except Children's Day on May 5)
Year-end and New Year holidays
Third Wednesdays of the month (for refiling)

Location

10minutes' walk from JR Ueno Station (Park Exit) or JR Uguisudani Station (South Exit)



リサイクル適性

この印刷物は、印刷用の紙へリサイクルできます。