

SIC Japanese Visit Course

“No Japanese language class nearby”

“My day off schedule does not match the Japanese class schedule”

The Japanese language course for you, begins!

《 Year 2020 2nd term 》

- ◇ **Period of application: October 2 (Friday) to October 20 (Tuesday)**
- ◇ **Period of study: November to January**

Participation
is free

- **Time schedule・Lesson** : 90min×10times
* Please let us know the day and time you wish to study
- **Place** : Public facilities near (Community center)
* We cannot teach you at home because of the coronavirus
- **Style of study** : 1 on 1 (learn with friends and family)
- **Contents** : Shimane original Japanese teaching materials

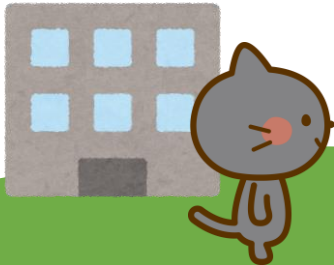
“Issho ni Nihongo Shimane-ken”

- * Study conversations necessary for daily life
- * This course is for adults entry-level

- **Number of applicants:** 30

We are looking for participants for the third term in November. The third term is a short course.

* People who cannot attend Japanese class



Be careful of the new coronavirus, while learning.

Application form
English



Pormat ng
Aplikasyon
Tagalog



- ✓ Please apply during the application period.

English <https://www.sic-info.org/visit-course/learner-registration-en/>

Tagalog <https://www.sic-info.org/visit-course/learner-registration-tg/>

- ✓ If the number of applicants exceeds, a lottery will be held.
- ✓ We will inform you by phone or e-mail for the result.
- ✓ Due to the effect of coronavirus, study may be interrupted. There is a possibility to be cancel.
- ✓ Shimane International Center will adjust the study place and make a decision and inform the student.
- ✓ If you have any questions, please ask by phone or email.

- **Contact ● Shimane International Center (SIC)**
TEL: 0852-31-5056 E-mail: issho@sic-info.org
URL: www.sic-info.org



**Shimane
International
Center**