

Tiara[®]

Y A C H T S



IT IS NOT MERELY OUR CRAFT.
IT IS OUR CALLING.

From day one, Tiara has been led by a passion for handcrafted, beautiful boats that create truly incredible experiences for Captain and guests. It is our conviction that to be the best is not sufficient, for that is only a comparison to the standards of others. We set ourselves apart by pursuing the ultimate goal of perfection, both in the products we make and in the entire conduct of our business.

We spend time truly understanding customers' wants and needs, and providing for them in ways that exceed expectations. It's a passion that extends to the Tiara buying experience, and a better overall dealer organization because every great voyage starts on shore.



Our service to customers encompasses partnerships with our dealers, establishing cooperative working relationships with suppliers and standing behind our product at all times. In doing so, we are confident our products will be a source of pride, an exhilarating thrill on the water and a lasting investment to their owners for years to come.



Back row: Alex Slikkers, Tom Slikkers, Tim Slikkers, Bob Slikkers
Front row: Kelly Slikkers, Leon Slikkers, David Slikkers

Tiara Yachts, its rich history and all that it has accomplished wouldn't have been possible if not for the vision, passion and unyielding entrepreneurial drive that my father, Leon Slikkers, demonstrated for decades.

Leon began building boats with the simple goal of delivering the highest quality product possible while utilizing modern production techniques of the era. His dedication to excellence and passion for boat building has inspired three generations of family members and will be a lasting legacy. Every Tiara is built on more than 75 years of boat manufacturing experience, by hand, with passion and inspiration.

The evolution in design, construction and performance of Tiara Yachts firmly places us at the height of the luxury yachting industry today. Following the remarkable success of our luxury outboard segment, our EX 60 is yet another signal of our commitment to innovation and building in America, as well as our inboard heritage.

As we approach the 50-year anniversary of Tiara Yachts, we continue to deliver products complete with the latest proven performance technologies, engineering advancements and timeless styling you have come to expect from our company. Our commitment to excellence, development of exciting new models and customer service are paramount to our success. We believe that in each and every Tiara Yacht, you will feel the passion and inspiration my father instilled in our company, family and employees responsible for delivering you an exceptional experience on the water.

Welcome Aboard,

Tom B. Slikkers
CEO and President



OUR STORY

From day one, Tiara Yachts has been led by a passion for boat building that was instilled by company founder Leon R. Slikkers. From wooden runabouts, sailboats, and fishing boats to day yachts and express cruisers, the vessels may have evolved over the years, but Tiara has remained true to its commitment to superior craftsmanship, manufacturing an American Made product, and its dedication to creating exceptional experiences on the water.

With a desire to make and create, 18-year-old Leon Slikkers left the family farm in Diamond Springs, Mich. in 1946 to join his brothers Gerald and Dennis at one of nearby Holland's largest factories, Chris-Craft.

Leon's love for boat building blossomed at Chris-Craft, where he was assigned to the joiner department to make cabin tops. Known for his high and unyielding expectations, Leon quickly worked his way up to the position of assistant foreman by the age of 24.

During a company-wide labor strike in 1952, Leon and fellow Chris-Craft employee Jason Petroelije decided to start building their own boats out of the Slikkers' family garage. Leon and Jason built -- and sold -- around 10 outboard-powered runabouts, made of sheet plywood and averaging 15-feet in length, with painted hulls and varnished mahogany decks, while waiting to return to work.

Though the promise of a steady paycheck and ability to support his growing family were Leon's reasons for initially returning to Chris-Craft, continued work stoppages motivated Leon to take his financial security into his own hands and venture out on his own.

By January 1955, a 27-year-old Leon left Chris-Craft and sold his home to raise the capital needed to

start building wooden runabouts under the SlickCraft name. Leon made 35 boats during that first official model year in 1955, constructed in a rented workshop while living with his family in the small apartment upstairs.

With a keen eye for spotting industry trends, Leon began experimenting with fiberglass almost immediately, working with his ever-expanding network of boat builders and local tradesmen. By 1960, SlickCraft was building fiberglass hulls in-house and had phased out its line of molded plywood models.

During the 1962 model year, Leon moved production to a 29,000 square foot former skating rink on South Washington in Holland. To keep up with increasing demand, SlickCraft headquarters would continue to grow and expand over the next decade, including to a plant on Brooks Ave., just one block away from today's manufacturing facility.

The rise in popularity also attracted the attention of larger conglomerates, and in September 1969, after much thought and prayer, Leon sold SlickCraft to AMF Corporation. As part of the agreement, he would remain as president of the SlickCraft division and would not build powerboats for five years as part of a non-compete clause.

AMF did not meet the high standards Leon had built his SlickCraft brand on, and he soon parted ways with the corporation to begin experimenting with a fiberglass sailboat design. On February 18, 1974, S2 Yachts, Inc., Leon's second company, was born with his eldest sons David and Robert by his side.

With the help of family members, friends and others, S2 Yachts blossomed quickly as its sailboats became well known in cruising and racing circles. Once the non-complete clause expired, S2 Yachts re-entered the powerboat manufacturing industry and its new 'Tiara Division' was created.

At the same time, construction began on a new 72,000 square foot manufacturing facility at 725 E. 40th Street, where the plant remains to this day. Demand for boats was so high that production began as soon as the walls and roof were raised. One of Slikkers' sons or another trusted employee would guard the plant each night until windows and doors could be installed.

In 1977, the Pursuit fishing boat line was added to the S2 portfolio and so well received that another 72,000 square foot plant was built in 1983, this time in Fort Pierce, Florida. Production of the Pursuit line would be concentrated in Fort Pierce, leaving the Holland plant to focus on Tiara.

In 1983, the Slikkers family purchased the SlickCraft name back from AMF and began producing boats under the banner until the late 80s.

Now with four unique brands in the S2 Yachts portfolio - S2 Sailboats, Tiara Yachts, Pursuit Fishing Boats and SlickCraft Sport Boats, Leon transitioned to Chief Executive Officer (CEO) in 1984. Eldest son David took over as president.

Leon began stepping further back in 1994, allowing his youngest son Tom to start assuming more and more of the administrative responsibilities of leading a corporation. He eventually took over as president of Pursuit in 2001, while at the same time, Bob became president of Tiara and David was promoted to CEO.

As the demands of the marketplace continued to evolve and grow, so did the S2 Yachts model lineup. After being elevated to CEO and President in 2012, Tom Slikkers ushered S2 into the next chapter, first unveiling the successful Coupe series before introducing the Tiara Sport outboard-powered product line.

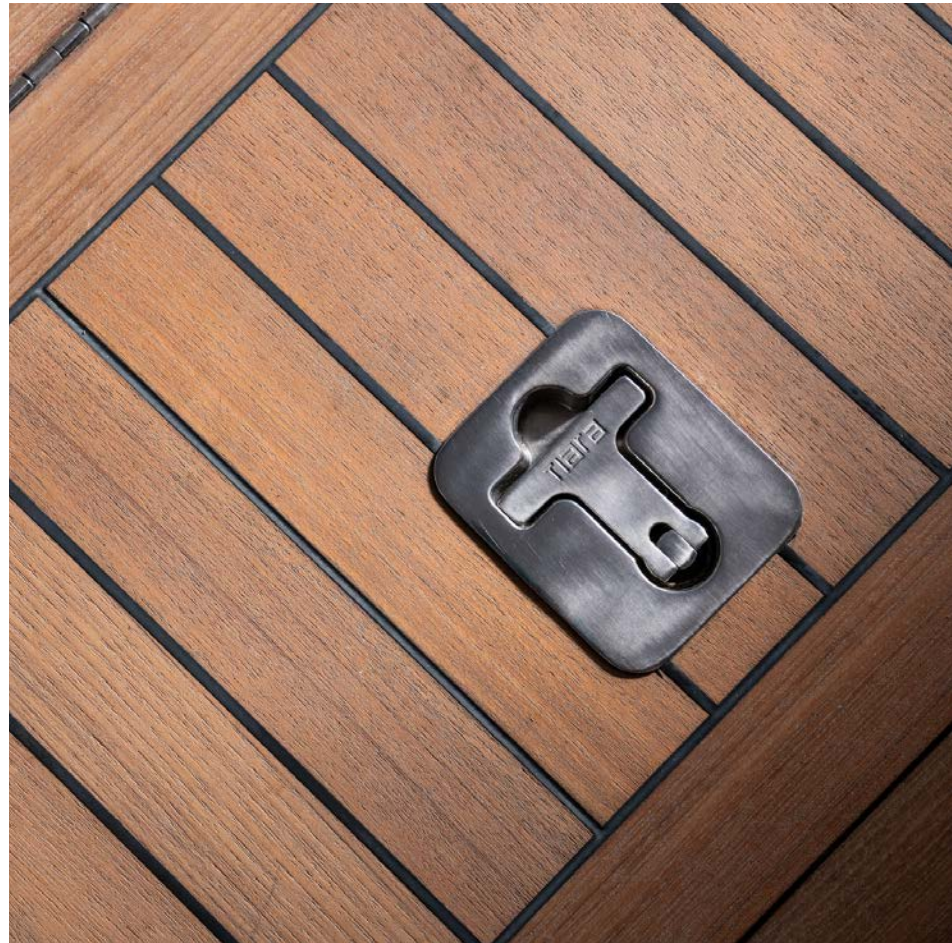
The flagship 38 Luxury Sport (LS) debuted in the fall of 2017 as the first outboard-powered Tiara. Its focus on performance without sacrificing luxury quickly set it apart from other vessels in its class; the 38 LS was recognized as the 2018 Miami International Boat Show Innovation Award winner.

Since then, the outboard market has grown exponentially and Tiara continues to develop and add new models to its lineup. As of 2023, the outboard roster included seven models across three distinct lines: Luxury Sport (LS), Luxury Crossover (LX) and Luxury Express (LE). One of its most recent launches, the 48 LS, was named a 2021 Top Product by Boating Industry and earned a spot in Robb Reports' Best of the Best issue as the best modular yacht.

In 2023, Tiara launched its largest vessel in company history: the EX 60. With a nod to the inboard heritage Leon built his business on, the EX 60 combines the classic elements, comforts and luxurious appointments of an inboard cruising yacht with the performance and functionality of a day boat.

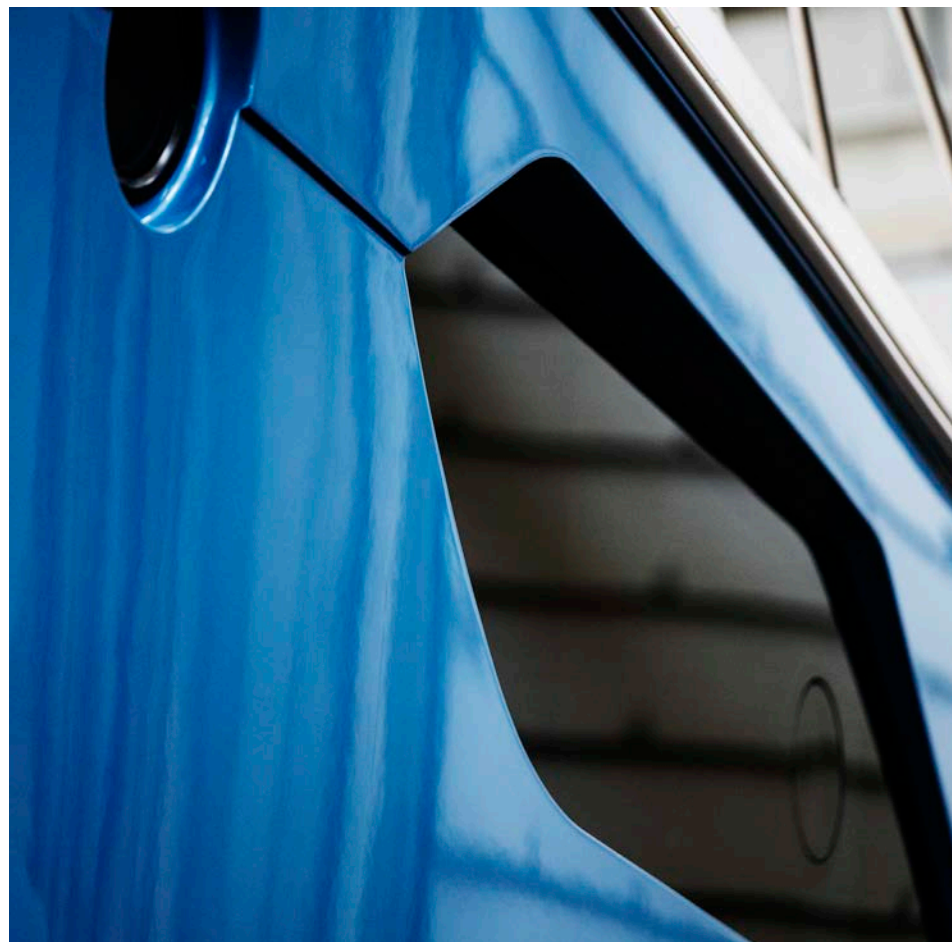
Tiara Yachts remains to this day one of the oldest, privately held boat manufacturers in the world. With the solid foundation laid by Leon's vision, passion for boat building and drive to be the best, the second, third and even fourth generations of Slikkers and employees alike are poised for even greater things ahead as they navigate the ever-changing waters.





A VISION FOR TIMELESS DESIGN

The timeless elegance of Tiara is recognizable from great distances, but is also evident in the smallest of details. Sweeping lines make for classic silhouettes, carefully-curated colors and materials, and even the layouts themselves, establish the highest standards of comfort and sophistication. Thoughtful design and engineering allow for more open, airy spaces to connect with the water and with your guests. Integrated features allow for every conceivable adventure you might want to embark on, and below deck, our yachts offer a luxurious respite and refined quarters for socializing or an enjoyable break. Every nuance of design has been crafted and polished for an unparalleled yachting experience. Social and piloting areas are as thoughtful in their design as it is effortless for Captain and guests to interact, pilot the boat, dock and embark again. Foresight and intelligent design offer up options and functionality to outfit your yacht perfectly for any excursions you can dream of.



AMERICAN MADE

We take great pride in manufacturing an American Made product. Throughout our storied history of hand-building boats, we have remained based in beautiful Holland, Michigan. This allows us to offer the highest level of craftsmanship, the greatest control over quality and creates a source of pride for our customers that their boat was handmade in the U.S.A., and legitimately of the greatest quality in the world. We have honed our craft throughout decades and generations, improving on design and manufacturing to the apex of refinement evident in our boats today. The drive embedded in our company as the finest, privately owned U.S. boat builder was instilled by our founder, NMMA Hall of Fame member, Leon Slikkers. From our president to our newest employees, everyone at Tiara is committed to providing the best boat possible, from the smallest detail to the greatest, and with a world-class level of customer service. It's a passion instilled in every Tiara employee and alive in everything we do today. In all the boats that Tiara Yachts crafts, there is a single theme: that only the absolute finest will do, from materials to quality standards, all the way through to the customer buying experience.





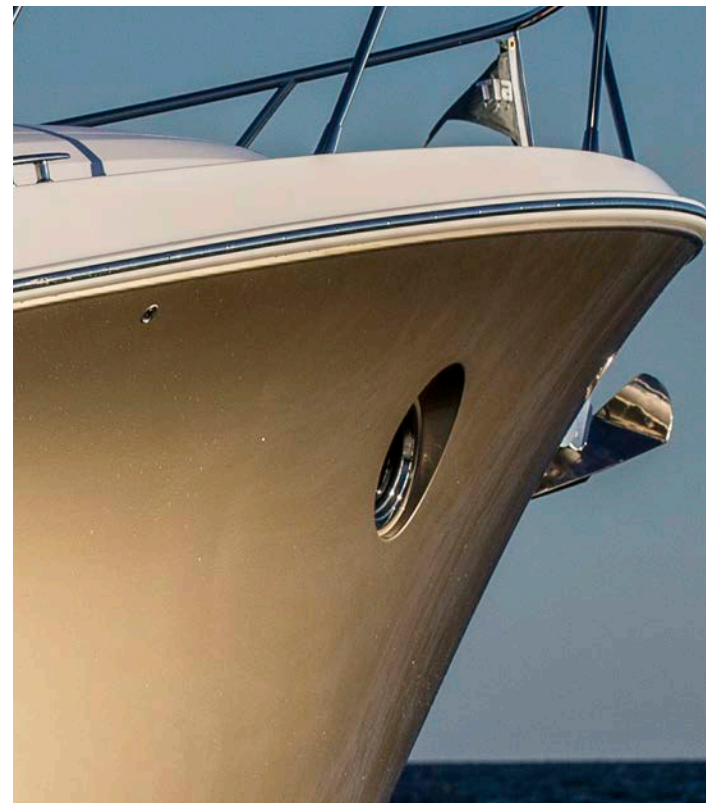
CONTINUED EXCELLENCE

We have prided ourselves for many years on our commitment to excellence both in the quality of the product we build, and the service we provide to our loyal customers. In doing so, we have been recognized by the National Marine Manufacturers Association for excellence in customer satisfaction every year since 2004. This prestigious award is presented to manufacturers who recognize the importance of customer satisfaction programs and utilize industry best practices. In order to receive this award, Tiara maintained a standard of excellence of 90 percent or higher in customer satisfaction.

Every new Tiara owner is sent a survey in an effort for us to best understand how we can improve the customer's experience. This diligent research process allows Tiara owners to feel confident that we will go above and beyond to make sure their boating experience is enjoyable, and provides valuable feedback so that we can continue to provide the highest level of customer service throughout the entire purchasing process.

Everything we do centers around the enjoyment of friends, family and the water. We bring this focus to life through sophisticated design and engineering, creating yachts that are visually stunning, incredibly comfortable, technologically advanced, and easier to pilot.

In the following pages, you will witness the result of our efforts to create the world's most rewarding yachting experience. From handcrafted tactile beauty to exacting technology, we have set out to make every detail and aspect of your Tiara a pleasure to behold. We hope you feel our passion too, in every yacht that bears the Tiara name, some of the finest yachts on the water.



IT'S ALL IN THE DETAILS

Each Tiara Yacht is built specifically to order, providing the opportunity to tailor your new Tiara Yacht. Various material and paint selections allow for your Tiara to truly become your own. Our fabric and solid surface options are carefully curated into packages, offering designer fabrics specifically engineered for a marine environment while combining luxurious designs and contemporary textures. A selection of solid surfaces and Quartz are built for durability and longevity and showcase stunning colorways.

Recognizable from a distance, the hallmark of each Tiara Yacht is its iconic hull shape. Your custom selection of hull paint creates the largest visual impact on your vessel, making your boat stand out from every other boat on the water and in the marina.

Each Tiara is primed and finished sanded prior to the application of a waterborne base coat preparing the vessel for your choice of paint followed by a sealing marine-grade clear coat. The durability and abrasion resistance of Axalta's marine coatings help ensure that every painted Tiara Yacht requires less maintenance over time and retains its glossy mirror-like finish longer. Our online Paint Your Tiara configurator further showcases our most popular color selections.

Outboard customers can create an elegant statement by choosing to paint the cowlings of the engines. In addition, select your color preference in patent synthetic teak, made with the highest grade UV protection available, refining the space while keeping maintenance to a minimum.

The details are important to us. It's the details that make every Tiara as unique as its owner.



INBOARD MODELS

COUPE SERIES

C 39
C 44
C 49

EX SERIES

EX 54
EX 60

OUTBOARD MODELS

LS SERIES

34 LS
38 LS
43 LS
48 LS

LX SERIES

34 LX

LE SERIES

43 LE
48 LE



COUPE SERIES

The Tiara Yachts Coupe lineup is built on the strengths of modern design, technical innovations and performance without abandoning the classic traditions and styling of its heritage. Complemented by integrated hardtops with built-in sunroofs and windshields with tinted, unobstructed glass port, starboard and aft, our Coupe models offer an open and airy feel throughout.

Open the counterbalanced, sliding doors and join indoor entertaining with the joys of whatever waters and scenery you find yourself moored. Traditional hardwood flooring and trim are paired with modern materials, hardware and finishes to give each Coupe a contemporary feel. Staterooms, heads and living spaces are basked with abundant natural light through skylights and port lighting.

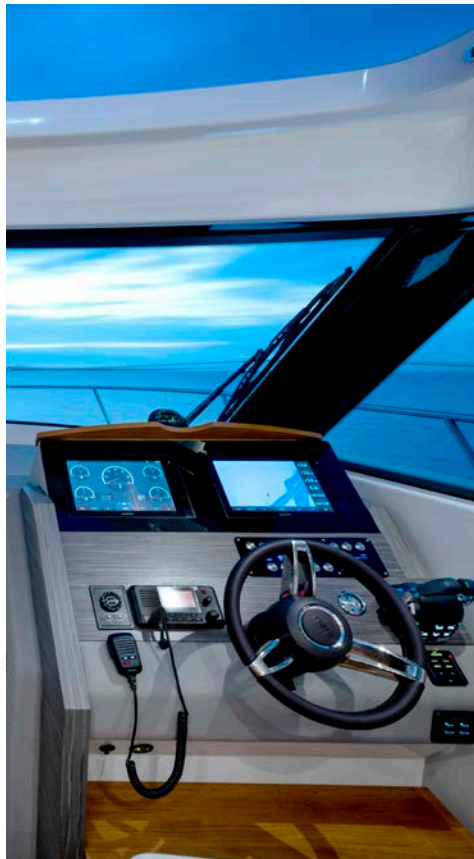
Perhaps best of all, your yachting experience will be brought to new levels of enjoyment through the feel of Volvo Penta IPS drives engineered with glass cockpit instrumentation and effortless joystick operation, standard on each of the Tiara Coupes.

Tiara's uncompromised quality and luxury combined with top-of-the-line integrated electronics systems make the 39 Coupe a perfectly sized and powerful package. Twin Volvo Penta IPS drives, paired with the dependable Tiara hull, deliver an exceptional driving experience alongside joystick controls and glass cockpit instrumentation.

Classic Tiara styling and quality components highlight the exterior, while modern interiors and architectural appointments await inside. A forward owner's stateroom with queen berth is complemented by a head and guest stateroom aft, providing plenty of comfortable space for a family or two couples to enjoy an extended cruise.



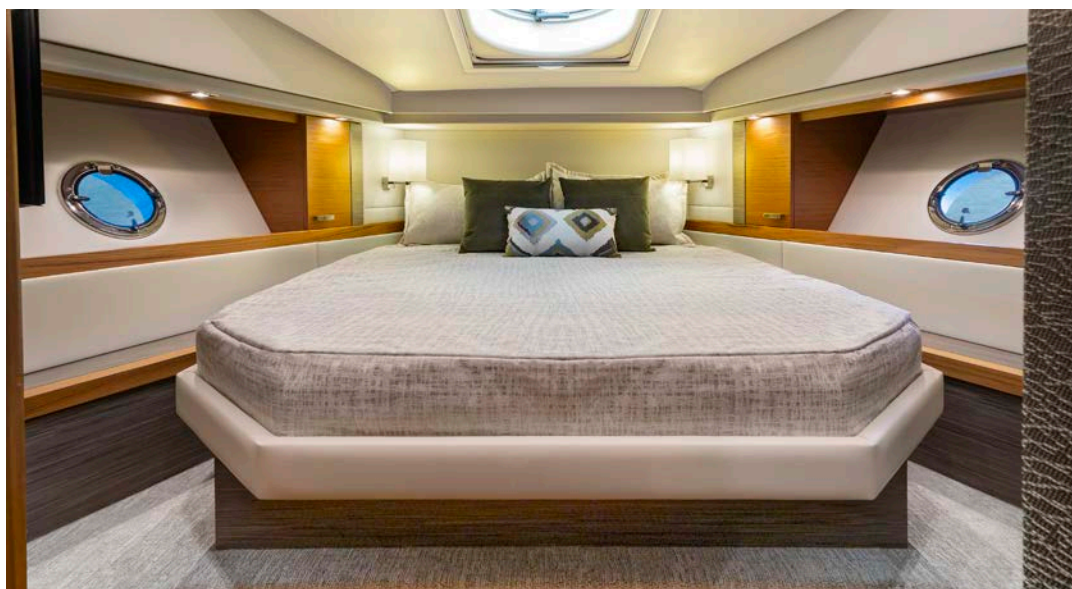




SALON PLAN

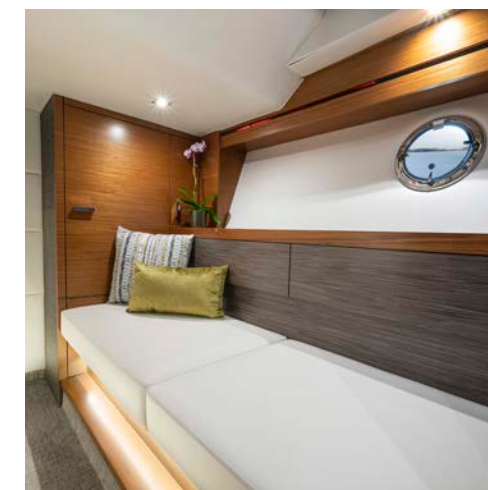
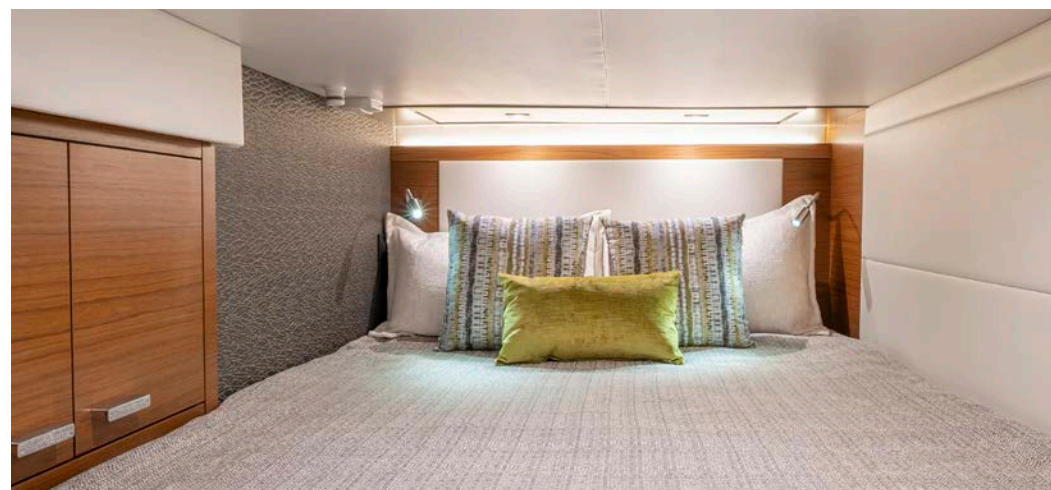


CABIN PLAN



SPECIFICATIONS

L.O.A. with Standard Swim Platform	40'10"	12.45 m
Beam	13'3"	4.04 m
Draft (fully loaded)	3'4"	1.02 m
Dry Weight	24,320 lbs	11,031 kg
Height from Waterline to Hardtop	9'10"	2.99 m
Height from Waterline to Radar Mount	10'4"	3.15 m
Height from Waterline to Garmin® Radar	11'2"	3.41 m
Height from Waterline to Anchor/Navigation Light	13'0"	3.96 m
Fuel Capacity	300 US gallons	1,135.62 L
Water Capacity	100 US gallons	378.54 L
Holding Tank Capacity	38 US gallons	143.84 L
Sleeping Accommodations		4
Deadrise at Transom		13.8°



44 COUPE

A forward-leaning take on classic Tiara Yacht lines, the profile of the 44 Coupe heralds the progressive nuances of this yacht. Warm, inviting and authentic materials alongside the integration of exterior and interior spaces promote interaction between pilot and guests for further enjoyment of the water. The salon opens easily through the oversized sliding glass doors, joining the galley, salon and aft cockpit seating.

Owner's and guest accommodations can be found below deck in addition to two heads. While topside, the fun gathers around the aft grill and swim platform. It's the perfect yacht where everything revolves around your connection to those aboard and the water.





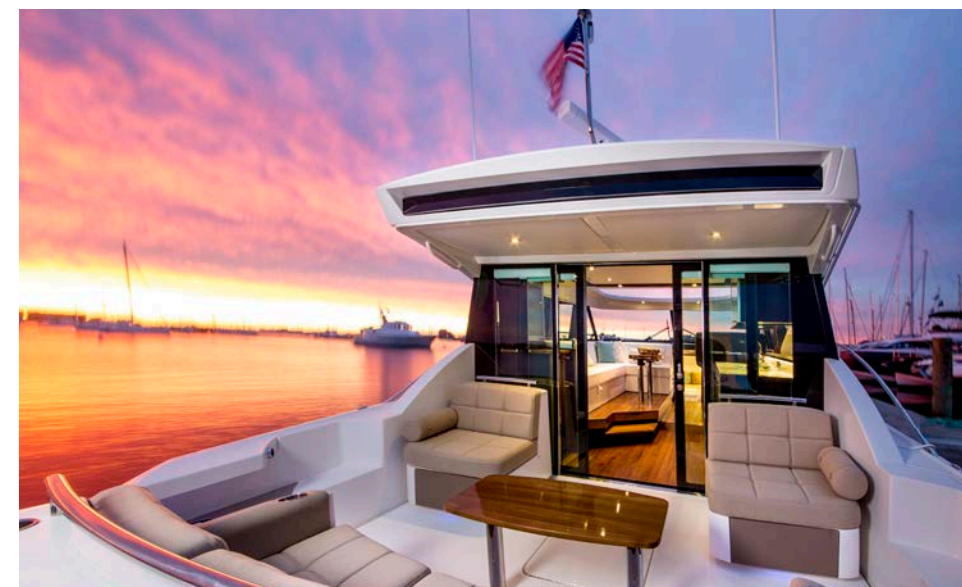
Hull Color: Patriotic Blue



SALON PLAN

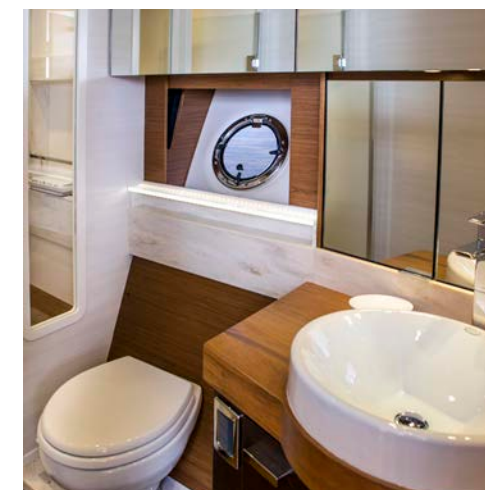


CABIN PLAN



SPECIFICATIONS

L.O.A. with Standard Swim Platform	45'6"	13.87 m
Beam	14'11"	4.54 m
Draft (fully loaded)	3'8.75"	1.14 m
Dry Weight	28,700 lbs	13,018 kg
Height from Waterline to Hardtop	10'0"	3.05 m
Height from Waterline to Radar Mount	10'1"	3.08 m
Height from Waterline to Garmin® Radar	12'3"	3.73 m
Height from Waterline to Anchor/Navigation Light	13'5"	4.09 m
Fuel Capacity	350 US gallons	1,324.89 L
Water Capacity	118 US gallons	446.68 L
Holding Tank Capacity	35 US gallons	132.49 L
Sleeping Accommodations		4
Deadrise at Transom		18°



49 COUPE

The 49 Coupe blends classic Tiara Yachts legacy with a contemporary balance of materials and improved layout, increasing social zones while maximizing seating and comfort. Interior, the single-level salon offers unparalleled height, 360-degree visibility, cross conversational seating and a generous 48" wide helm seat. Connect interior and exterior zones via sliding glass doors that open the galley to the single-entry cockpit with spacious L-lounge.

Accommodations for up to six guests await below deck. The centerline owner's berth boasts private head, storage and an abundance of natural light via the large hullside windows. Guest accommodations enjoy natural light and a private head entry.





Hull Color: Pewter



SALON PLAN



CABIN PLAN



SPECIFICATIONS

L.O.A. with Standard Swim Platform	50'3"	15.31 m
Beam	15'4"	4.67 m
Draft (fully loaded)	4'2"	1.27 m
Dry Weight	41,000 lbs	18,642 kg
Height from Waterline to Hardtop	12'9"	3.88 m
Height from Waterline to Radar Mount	13'2.5"	4.04 m
Height from Waterline to Garmin® Radar	14'8"	4.50 m
Height from Waterline to Anchor/Navigation Light	15'7"	4.76 m
Fuel Capacity	500 US gallons	1,892.71 L
Water Capacity	135 US gallons	511.03 L
Holding Tank Capacity	68 US gallons	257.41 L
Sleeping Accommodations		6
Deadrise at Transom		17°





EX SERIES

FLEXible Luxury. Endless Adventure to EXplore.

A tribute to our history and the products that paved the way, the EX Series is the next level of personalized luxury. Our team of design, engineering and manufacturing experts combined learning from our popular LS Series alongside the established success of our Coupe models maximizing exterior enjoyment, while providing comforts in the salon and the ability for extended stays. Each owner's unique boating needs are met through their selection of cockpit layout and amenities creating the ultimate luxury purchase experience.

No detail has been overlooked. A concerted effort was placed on minimizing noise and vibration through a complete vessel audit identifying all opportunities where both could be reduced. As a result, vibration from the mechanical space is reduced via the resin infused grid system. Our resin infusion process continues to all fiberglass parts used. This process leads to lightweight parts which offers high performance and ride control. In longstanding partnership and experience with Volvo Penta, IPS units pair with the latest Volvo technology including Electronic Vessel Control and Volvo's Interceptor Trim System with Active Ride Control.

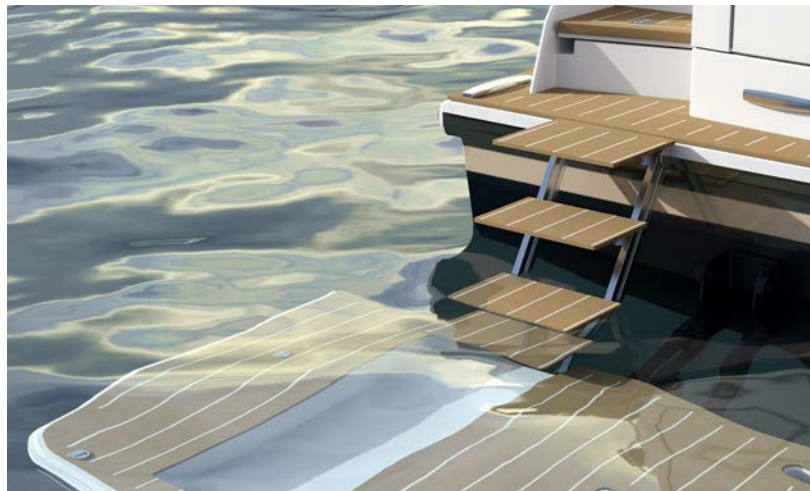
Expanding the series, the Tiara Yachts EX 54 carries the tradition of its flagship, the EX 60, with customizable aft cockpit, twin terraces and disappearing bulkhead. Flexible salon seating and a mid-cockpit breakfast bar blends exterior enjoyment with interior amenities, guests will enjoy the open air and social settings onboard. Cruise and entertain or opt to enjoy your favorite water activities from the twin terraces and swim platform.

Interior, the salon and galley offer plenty of amenities and comforts for dining and entertaining. Below deck, three peaceful and private sleeping accommodations for six adults alongside two heads provide space and comfort for all onboard. Continuing our partnership and experience with Volvo Penta as well as Garmin® electronics, Twin IPS2 950s pair with the latest Volvo technology including glass cockpit, assisted docking and 360° surround view camera.





Hull Color: Fog Grey



SALON PLAN



CABIN PLAN

SPECIFICATIONS

L.O.A. with Standard Swim Platform	54'3"	16.54 m
Beam	15'11"	4.85 m
Draft (fully loaded)	3'8"	1.12 m
Dry Weight	48,400 lbs	21,954 kg
Height from Waterline to Hardtop	12'5"	3.78 m
Height from Waterline to Radar Mount	13'9"	4.20 m
Height from Waterline to Garmin® Radar	15'3"	4.64 m
Height from Waterline to Anchor/Navigation Light	18'1"	5.51 m
Fuel Capacity	650 US gallons	2,460 L
Water Capacity	135 US gallons	511 L
Holding Tank Capacity	68 US gallons	257.4 L
Sleeping Accommodations		6
Deadrise at Transom		14°

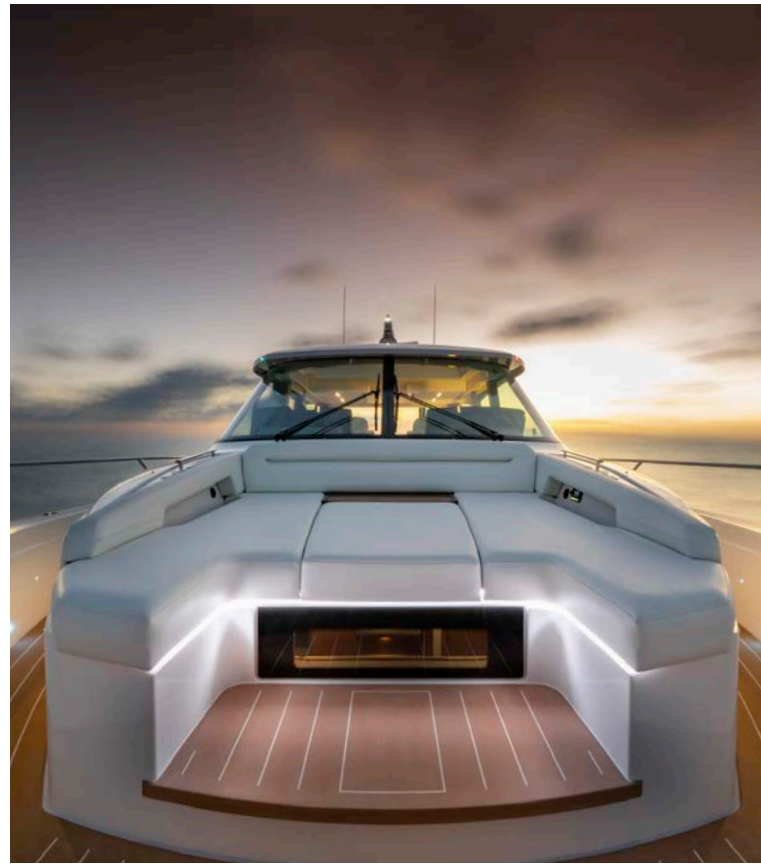
An anthology of our rich history and product portfolio, the Tiara Yachts EX 60 embodies flexible luxury and endless adventure. A true reflection of each owner and their unique boating lifestyle, the 60 offers customer flexibility alongside elevated luxury. Different options focused on cruising, entertaining or enjoying your favorite water sports provide a cockpit layout entirely and exclusively of your selection. The salon and galley integrate seamlessly to the cockpit, maximizing social function and open-air entertainment.

Forward, the easily accessible bow provides yet another exterior relaxation zone. Below deck, three peaceful sleeping accommodations for six adults and two private heads provide space and comfort for all onboard. The Tiara spirit is reinvigorated with quiet, Bluewater performance that encourages you to venture farther. Explore for the day, weekend or week.





Hull Color: Tour De France Blue



SALON PLAN



CABIN PLAN



SPECIFICATIONS

L.O.A. with Standard Swim Platform	60'3"	18.36 m
Beam	16'11"	5.16 m
Draft (fully loaded)	4'0"	1.22 m
Dry Weight	53,350 lbs	24,200 kg
Height from Waterline to Hardtop	12'9"	3.88 m
Height from Waterline to Radar Mount	14'1"	4.29 m
Height from Waterline to Garmin® Radar	15'6"	4.72 m
Height from Waterline to Anchor/Navigation Light	18'1"	5.51 m
Fuel Capacity	700 US gallons	2,649 L
Water Capacity	150 US gallons	568 L
Holding Tank Capacity	86 US gallons	325.5 L
Sleeping Accommodations		6
Deadrise at Transom		14°



34 LS
38 LS
43 LS
48 LS

LS SERIES

The Luxury Sport (LS) Series consists of the first-ever outboard powered Tiara products, designed specifically around outboard propulsion. With a focus on luxury sport yachting, this lineup offers sophisticated vessels ready to meet the demands of day yachting. The epitome of functionality and comfort, LS models feature multiple and easily accessible social zones as well as ample lounging accommodations with transformational seating. Optional fishing equipment offers an extra dimension of usability.



34 LS

The 34 LS carries the functionality and heritage of luxury sport yachting set by its predecessor, the 38 LS. Complete with walk-around capabilities, outdoor galley and convertible sun pad, this model continues to define luxury day yachting. Captain and guests will enjoy multiple lounging spaces and social zones.

Interior, guests will find a quiet refuge complete with sleeping accommodation and head. Athletic, sleek styling combined with thrilling performance ensures one exciting day on the water after another.



Hull Color: Silver Metallic



EXTERIOR PLAN



INTERIOR PLAN



SPECIFICATIONS

L.O.A. with Standard Swim Platform	34'9"	10.59 m
Beam	11'0"	3.35 m
Draft (motors down)	3'1"	0.94 m
Dry Weight	13,800 lbs	6,260 kg
Height from Waterline to Hardtop	8'7"	2.62 m
Height from Waterline to Garmin® Radar	10'1"	3.07 m
Fuel Capacity	200 US gallons	757.08 L
Diesel Capacity (optional)	20 US gallons	75.71 L
Water Capacity	30 US gallons	113.56 L
Holding Tank Capacity	20 US gallons	75.71 L
Deadrise at Transom		22°





38 LS

The 38 LS is the reinterpretation of luxury sport yachting, a fusion of sophistication against the demands of day yachting. The epitome of functionality, the 38 LS offers walk-around capabilities, side boarding door and outdoor galley in addition to an aft rotating U-lounge that further opens the swim platform and access to the water. Below deck you'll find an elegant cabin with berth and private head.

With a fuel capacity of 331 US gallons, you have plenty of range to spend a couple of days running to your favorite ports of call.



Hull Color: Abu Dhabi



EXTERIOR PLAN



INTERIOR PLAN



SPECIFICATIONS

L.O.A. with Standard Swim Platform	38'1"	11.61 m
Beam	12'6"	3.81 m
Draft (motors down)	3'6"	1.07 m
Dry Weight	18,600 lbs	8,437 kg
Height from Waterline to Hardtop	9'2"	2.79 m
Height from Waterline to Garmin® Radar	10'4"	3.15 m
Fuel Capacity	331 US gallons	1,252.97 L
Diesel Capacity (generator)	30 US gallons	113.56 L
Water Capacity	50 US gallons	189.27 L
Holding Tank Capacity	27 US gallons	102.21 L
Deadrise at Transom		20°





43 LS

The 43 LS combines the luxurious amenities and details synonymous with the Tiara Yachts brand. Forward, the bow features wrap around seating with a reclining lounge. The helm seats four comfortably, with standing room and a leaning bolster just aft, providing a secure zone for more guests while underway. A hullside terrace located portside presents access to your favorite water activities. The innovative aft U-lounge rotates 180° allowing guests to further enjoy the swim platform and beautiful views. Entertain everyone aboard from the galley, well equipped with sink, refrigerator and large countertop. While below deck, comfortable accommodations for four await.

The sleek styling of the 43 LS is best complemented by power and performance. A fuel capacity of 400 US gallons combined with a top speed over 50 mph gets you to your favorite port of call fast, giving you more time to enjoy with family and friends.



Hull Color: Bright Silver



EXTERIOR PLAN



INTERIOR PLAN



SPECIFICATIONS

L.O.A. with Standard Swim Platform	43'6"	13.26 m
Beam	13'0"	3.96 m
Draft (motors down)	3'5"	1.04 m
Dry Weight	22,400 lbs	10,160 kg
Height from Waterline to Hardtop	9'4"	2.84 m
Height from Waterline to Garmin® Radar	10'9"	3.28 m
Fuel Capacity	400 US gallons	1,514.16 L
Diesel Capacity	30 US gallons	113.56 L
Water Capacity	60 US gallons	227.12 L
Holding Tank Capacity	40 US gallons	151.42 L
Deadrise at Transom		21°



The largest outboard powered Tiara Yacht ever built, the 48 LS builds on the legacy of the LS series. The bow features wrap-around seating and reclining lounge while aft, the innovative rotating lounge boasts multiple locking positions and built-in footrest. Deploy the terrace and expand the cockpit in addition to improving access to the water. At the helm, sliding doors provide a welcome retreat from the elements.

Below deck you'll find a forward pedestal berth and private head in addition to the aft stateroom that features dual twin berths. The berths may be converted for more comfortable adult sleeping accommodations.





Hull Color: Tanzanite



EXTERIOR PLAN

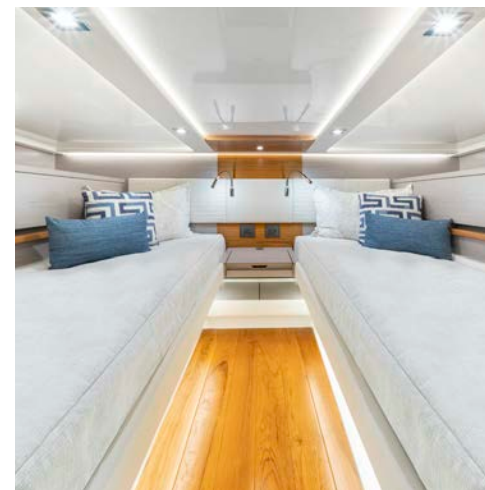


INTERIOR PLAN



SPECIFICATIONS

L.O.A. with Standard Swim Platform	48'4"	14.73 m
Beam	14'2"	4.32 m
Draft (motors down)	3'10"	1.17 m
Dry Weight	30,000 lbs	13,608 kg
Height from Waterline to Hardtop	9'8"	2.95 m
Height from Waterline to Garmin® Radar	12'0"	3.95 m
Fuel Capacity	660 US gallons	2,498.37 L
Diesel Capacity	30 US gallons	113.56 L
Water Capacity	100 US gallons	378 L
Holding Tank Capacity	50 US gallons	189.27 L
Deadrise at Transom		21°





LX SERIES

The Luxury Crossover (LX) Series boasts the 34 LX which offers functionality and comfort for everyone aboard. Transformational aft seating, a hallmark feature on our outboard models, allows guests to find their individual place for optimal relaxation while the centerline walkway leads to bow seating. Storage, a well-equipped galley and private head allow for a full day's worth of enjoyment on the water.



34 LX

A traditional bow rider layout, the 34 LX provides comfortable forward seating accessed via a centerline pass through. An accommodating cockpit provides abundant seating for family and friends while the transformational aft seat offers the ability to enlarge or reduce the cockpit size based on guests' needs aboard. Smart storage allows space for beach and water gear as well as boat equipment. The sunroof and centerline passive ventilation system both offer fresh air throughout, adding comfort for everyone aboard.

Mercury® propulsion provides power and performance both captain and guests are sure to appreciate. Integrated electronics and Garmin® Marine Navigation Systems complement the package, providing intuitive and functional ease of use.



Bootline and Accent Color: Delft Blue



EXTERIOR PLAN



INTERIOR PLAN



SPECIFICATIONS

L.O.A. with Standard Swim Platform	34'9"	10.59 m
Beam	11'0"	3.35 m
Draft (motors down)	3'1"	0.94 m
Dry Weight	13,800 lbs	6,260 kg
Height from Waterline to Hardtop	8'7"	2.62 m
Height from Waterline to Garmin® Radar	9'11"	3.02 m
Fuel Capacity	200 US gallons	757.08 L
Diesel Capacity (optional)	20 US gallons	75.71 L
Water Capacity	30 US gallons	113.56 L
Holding Tank Capacity	20 US gallons	75.71 L
Deadrise at Transom		22°



LE SERIES

The Luxury Express (LE) Series consists of the 48 LE and 43 LE, built with unique social zones, transformational seating and thrilling performance. Innovative features including a fold-down terrace and rotating module further improve your comfort aboard. Optional fishing equipment including an aft cockpit module and hardtop equipment further enhance the usability of the lineup.



43 LE

The updated 43 LE offers refined interior amenities alongside an updated aft cockpit. Below deck, a private owner's stateroom is located forward while a mid-cabin guest stateroom and private head accent the space. The atrium and steps lead upstairs to a fully equipped and centralized galley in the salon. This space is complemented by the transforming portside companion seat that adjusts for additional dining seating. The dinette also converts to a berth.

A glass enclosure with sliding glass door and electrically actuated glass window open to the aft cockpit with standard rotating u-lounge seating. Optional aft cockpit equipment includes the fishing module and related accessories. The fold-down terrace expands and improves your access to the water.



Hull Color: Viper Blue



EXTERIOR PLAN



INTERIOR PLAN



SPECIFICATIONS

L.O.A. with Standard Swim Platform	43'6"	13.26 m
Beam	13'0"	3.96 m
Draft (motors down)	3'5"	1.04 m
Dry Weight	24,000 lbs	10,866 kg
Height from Waterline to Hardtop	9'9"	2.97 m
Height from Waterline to Garmin® Radar	11'2"	3.04 m
Fuel Capacity	540 US gallons	2,044 L
Diesel Capacity	30 US gallons	113.56 L
Water Capacity	60 US gallons	227.12 L
Holding Tank Capacity	40 US gallons	151.42 L
Deadrise at Transom		21°

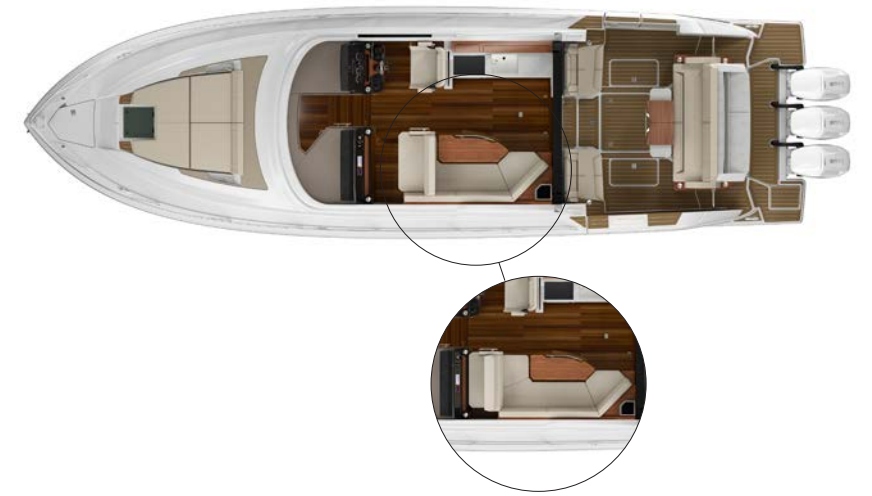
The flagship of our Luxury Express series, the 48 LE is the perfect blend of entertaining comforts and adventure amenities. The galley and dining area welcomes you with robust features to starboard and dining accommodations to port while the aft bulkhead and salon doors open to blend the galley and aft cockpit zones for the ultimate entertaining area onboard. The rotating lounge module has power actuation allowing the seat to be positioned towards the terrace, aft, and anywhere in between.

A high-gloss teak table complements the seating while an electric grill and countertop are located on the aft of the seat. The portside terrace expands your access to the water with integrated swimming ladder. Below deck, sleeping accommodations for four include a forward queen pedestal berth and aft twin berths that conveniently converts to a queen in addition to two heads.

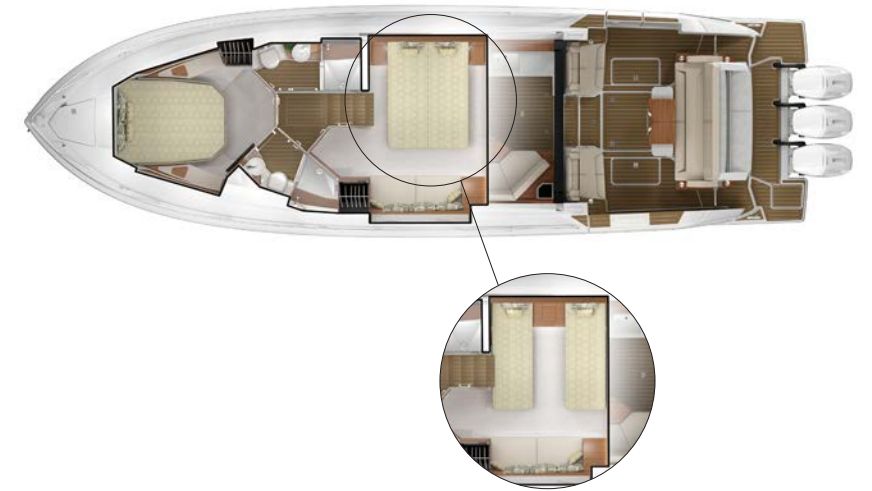




Hull Color: Midnight Blue



EXTERIOR PLAN



INTERIOR PLAN



SPECIFICATIONS

L.O.A. with Standard Swim Platform	48'4"	14.99 m
Beam	14'2"	4.32 m
Draft (motors down)	3'10"	1.17 m
Dry Weight	32,500 lbs	14,742 kg
Height from Waterline to Hardtop	10'10"	3.30 m
Height from Waterline to Garmin® Radar	13'1"	3.99 m
Fuel Capacity	660 US gallons	2,498.37 L
Diesel Capacity	30 US gallons	113.56 L
Water Capacity	100 US gallons	178.54 L
Holding Tank Capacity	50 US gallons	189.27 L
Deadrise at Transom		21°





POWER PARTNERS

Tiara Yachts might be most recognizable by their elegant, timeless design, hardware and trims, but the true hallmark of our yachts are the innovative features and thoughtfully integrated powertrains.

More than 10 years ago, innovation and customer satisfaction collided when we partnered with Volvo Penta, making history and becoming one of the first boat builders in the world to use Volvo Penta's revolutionary new propulsion system: Volvo Penta IPS. As an early adopter, we immediately realized the future of boating lay in the innovative pod propulsion system that offered unparalleled benefits as a unique alternative to the traditional shaft drive. A singular goal drives our partnership with Volvo Penta: continually improving the boating experience.

Our outboard portfolio boasts a close partnership with Mercury Marine. In 2019, our collaboration grew as we learned of their upcoming Verado® v12 engine launch. Aiming to maximize the harmony and performance of craft and powertrain, we designed a product specific to this revolutionary outboard propulsion, the 48 LS. Over the years, our partnership has expanded as we've introduced Mercury power on each of our outboard products. Every outboard option offers customers a unique combination of technology and power including joystick driving. Captain and guests will delight in thrilling performance aboard and enjoy the peace of mind delivered through dependable and purpose-built technologies.

**VOLVO
PENTA**

MERCURY





ADVENTURE AWAITS



Specifications, pricing as well as standard and optional equipment are subject to change without notice. All measurements shown throughout the Tiara Yachts brochure are approximate. For more information and pricing, please contact your factory authorized Tiara Yachts dealer.

TIARA YACHTS

725 E 40th Street, Holland, MI 49423 - 616.392.7163

tiarayachts.com