

Universal Multiple-Octet Coded Character Set
 International Organization for Standardization
 Organisation Internationale de Normalisation
 Международная организация по стандартизации

Doc Type: Working Group Document**Title: Final proposal for encoding the Warang Citi script in the SMP of the UCS****Source: UC Berkeley Script Encoding Initiative (Universal Scripts Project)****Author: Michael Everson****Status: Liaison Contribution****Action: For consideration by JTC1/SC2/WG2 and UTC****Replaces: N1958 (1999-01-29), N3411 (2008-04-08), N3668 (2009-08-05)****Date: 2012-04-19**

1. Introduction. The Warang Citi script is used to write the Ho language. Ho is a North Munda language, which family, together with the Mon-Khmer languages, makes up Austro-Asiatic. Warang Citi was devised by charismatic community leader Lako Bodra as part of a comprehensive cultural program, and was offered as an improvement over scripts used by Christian missionary linguists. Ho people live in the Indian states of Orissa and Jharkand. In Jharkand, they are found in Ranchi, Chaibasa and Jamshedpur, and in villages like Pardsa, Jaldhar, Tekasi, Tilupada, Baduri, Purtydigua, Roladih, Tupu Dana, Jetia, Dumbisai, Harira, Gitilpi, Karlajuri, Sarliburu, Narsana, Gidibas Kokcho, Lupungutu, Pandaveer, Jhinkapani, Kondwa. According to the SIL *Ethnologue*, there are 1,026,000 speakers of Ho. There are at present two publications in the script: a magazine *Ho Sanagam* ('meeting' from Hindi *saṅgam*), which comes out yearly and *Kolhan Sakam*, which comes out biweekly.

Today, the Ho community can be characterized as still a primarily oral community, with an emergent literary tradition. Many Ho do not write their language in any form. Among those who do, there are different camps. One camp that promotes the use of Devanagari for Ho; another camp knows how to use Warang Citi, and expresses a strong sentiment, even a kind of reverence towards it. And there are some people who seem to fall into both camps. There are also people who use Latin letters to write Ho on an ad-hoc basis and for things like e-mail or SMS. The use of Warang Citi seems to be stronger in the eastern part of the diaspora, where books that use it have been printed. (See samples below.) The expert we consulted, Mr Dobro Buriuli, teaches the script and over 200 students have passed his courses. In the opinion of Anna Pucilowski, who did fieldwork in February 2012, "the people that are interested in Warang Chiti are all ages I would say but they're mostly educated. Literacy is pretty low outside the towns and cities."

2. Structure. Warang Citi is a casing script, written from left to right. Unlike many other Indic scripts, it has features of an alphabet: vowels are written as full letters, with no vowel-modifiers. However, consonants may have an inherent vowel; it typically is pronounced [a] or [ɔ], and less often [ɛ], and never occurs in final position. Because the inherent vowels do not appear explicitly, there can be ambiguity in the reading of certain words. The script has no regular system of conjuncts nor an explicit virama. In the presentation here, the inherent vowel is transcribed *Aa* and the explicit vowel 𑄓𑄣 is transcribed *Āā*.

The letter 𑄣𑄣 *hiyo* is used after a vowel to indicate lengthening or aspiration: 𑄣𑄣𑄣𑄣 *ĀH āh* (*Ā ā*). Long *i* and *u* are represented by the individual letters 𑄣𑄣 *ī ī* and 𑄣𑄣 *ū ū*; these do not appear to be equivalent to 𑄣𑄣𑄣𑄣 *iH ih* or 𑄣𑄣𑄣𑄣 *uH uh*. The letters 𑄣𑄣 *ī ī* and 𑄣𑄣 *ū ū* may also, in certain cases, be pronounced as short vowels or diphthongs ([ai] for long *i* or [au] for long *u*). The details of how (or if) length is handled orthographically in Warang Citi is unclear at this point.

118B6;WARANG CITI CAPITAL LETTER AM;Lu;0;L;;;N;;;118D6;
118B7;WARANG CITI CAPITAL LETTER BU;Lu;0;L;;;N;;;118D7;
118B8;WARANG CITI CAPITAL LETTER PU;Lu;0;L;;;N;;;118D8;
118B9;WARANG CITI CAPITAL LETTER HIYO;Lu;0;L;;;N;;;118D9;
118BA;WARANG CITI CAPITAL LETTER HOLO;Lu;0;L;;;N;;;118DA;
118BB;WARANG CITI CAPITAL LETTER HORR;Lu;0;L;;;N;;;118DB;
118BC;WARANG CITI CAPITAL LETTER HAR;Lu;0;L;;;N;;;118DC;
118BD;WARANG CITI CAPITAL LETTER SSUU;Lu;0;L;;;N;;;118DD;
118BE;WARANG CITI CAPITAL LETTER SII;Lu;0;L;;;N;;;118DE;
118BF;WARANG CITI CAPITAL LETTER VIYO;Lu;0;L;;;N;;;118DF;
118C0;WARANG CITI SMALL LETTER NGAA;Ll;0;L;;;N;;;118A0;;118A0
118C1;WARANG CITI SMALL LETTER A;Ll;0;L;;;N;;;118A1;;118A1
118C2;WARANG CITI SMALL LETTER WI;Ll;0;L;;;N;;;118A2;;118A2
118C3;WARANG CITI SMALL LETTER YU;Ll;0;L;;;N;;;118A3;;118A3
118C4;WARANG CITI SMALL LETTER YA;Ll;0;L;;;N;;;118A4;;118A4
118C5;WARANG CITI SMALL LETTER YO;Ll;0;L;;;N;;;118A5;;118A5
118C6;WARANG CITI SMALL LETTER II;Ll;0;L;;;N;;;118A6;;118A6
118C7;WARANG CITI SMALL LETTER UU;Ll;0;L;;;N;;;118A7;;118A7
118C8;WARANG CITI SMALL LETTER E;Ll;0;L;;;N;;;118A8;;118A8
118C9;WARANG CITI SMALL LETTER O;Ll;0;L;;;N;;;118A9;;118A9
118CA;WARANG CITI SMALL LETTER ANG;Ll;0;L;;;N;;;118AA;;118AA
118CB;WARANG CITI SMALL LETTER GA;Ll;0;L;;;N;;;118AB;;118AB
118CC;WARANG CITI SMALL LETTER KO;Ll;0;L;;;N;;;118AC;;118AC
118CD;WARANG CITI SMALL LETTER ENY;Ll;0;L;;;N;;;118AD;;118AD
118CE;WARANG CITI SMALL LETTER YUJ;Ll;0;L;;;N;;;118AE;;118AE
118CF;WARANG CITI SMALL LETTER UC;Ll;0;L;;;N;;;118AF;;118AF
118D0;WARANG CITI SMALL LETTER ENN;Ll;0;L;;;N;;;118B0;;118B0
118D1;WARANG CITI SMALL LETTER ODD;Ll;0;L;;;N;;;118B1;;118B1
118D2;WARANG CITI SMALL LETTER TTE;Ll;0;L;;;N;;;118B2;;118B2
118D3;WARANG CITI SMALL LETTER NUNG;Ll;0;L;;;N;;;118B3;;118B3
118D4;WARANG CITI SMALL LETTER DA;Ll;0;L;;;N;;;118B4;;118B4
118D5;WARANG CITI SMALL LETTER AT;Ll;0;L;;;N;;;118B5;;118B5
118D6;WARANG CITI SMALL LETTER AM;Ll;0;L;;;N;;;118B6;;118B6
118D7;WARANG CITI SMALL LETTER BU;Ll;0;L;;;N;;;118B7;;118B7
118D8;WARANG CITI SMALL LETTER PU;Ll;0;L;;;N;;;118B8;;118B8
118D9;WARANG CITI SMALL LETTER HIYO;Ll;0;L;;;N;;;118B9;;118B9
118DA;WARANG CITI SMALL LETTER HOLO;Ll;0;L;;;N;;;118BA;;118BA
118DB;WARANG CITI SMALL LETTER HORR;Ll;0;L;;;N;;;118BB;;118BB
118DC;WARANG CITI SMALL LETTER HAR;Ll;0;L;;;N;;;118BC;;118BC
118DD;WARANG CITI SMALL LETTER SSUU;Ll;0;L;;;N;;;118BD;;118BD
118DE;WARANG CITI SMALL LETTER SII;Ll;0;L;;;N;;;118BE;;118BE
118DF;WARANG CITI SMALL LETTER VIYO;Ll;0;L;;;N;;;118BF;;118BF
118E0;WARANG CITI DIGIT ZERO;Nd;0;L;;0;0;0;N;;;;
118E1;WARANG CITI DIGIT ONE;Nd;0;L;;1;1;1;N;;;;
118E2;WARANG CITI DIGIT TWO;Nd;0;L;;2;2;2;N;;;;
118E3;WARANG CITI DIGIT THREE;Nd;0;L;;3;3;3;N;;;;
118E4;WARANG CITI DIGIT FOUR;Nd;0;L;;4;4;4;N;;;;
118E5;WARANG CITI DIGIT FIVE;Nd;0;L;;5;5;5;N;;;;
118E6;WARANG CITI DIGIT SIX;Nd;0;L;;6;6;6;N;;;;
118E7;WARANG CITI DIGIT SEVEN;Nd;0;L;;7;7;7;N;;;;
118E8;WARANG CITI DIGIT EIGHT;Nd;0;L;;8;8;8;N;;;;
118E9;WARANG CITI DIGIT NINE;Nd;0;L;;9;9;9;N;;;;
118EA;WARANG CITI NUMBER TEN;No;0;L;;;10;N;;;;
118EB;WARANG CITI NUMBER TWENTY;No;0;L;;;20;N;;;;
118EC;WARANG CITI NUMBER THIRTY;No;0;L;;;30;N;;;;
118ED;WARANG CITI NUMBER FORTY;No;0;L;;;40;N;;;;
118EE;WARANG CITI NUMBER FIFTY;No;0;L;;;50;N;;;;
118EF;WARANG CITI NUMBER SIXTY;No;0;L;;;60;N;;;;
118F0;WARANG CITI NUMBER SEVENTY;No;0;L;;;70;N;;;;
118F1;WARANG CITI NUMBER EIGHTY;No;0;L;;;80;N;;;;
118F2;WARANG CITI NUMBER NINETY;No;0;L;;;90;N;;;;
118FF;WARANG CITI OM;Lo;0;L;;;N;;;;

10. Bibliography.

- Pinnow, Heinz-Jürgen. 1972. “Schrift und Sprache in den Werken Lako Bodras im Gebiet der Ho von Singbhum (Bihar)”, in *Anthropos* 67:822–857.
- Zide, Norman. 1996. “Scripts for Munda languages”, in Peter T. Daniels and William Bright, eds. *The world’s writing systems*. New York; Oxford: Oxford University Press. ISBN 0-19-507993-0
- [s.n.]. 2003. ᱥᱟᱦᱮ ᱵᱟᱨ (ᱱᱟᱥᱟ ᱵᱟᱨ). [s.l.]: [s.n.]. (See Figure 25.)

11. Acknowledgements. This project was made possible in part by a grant from the U.S. National Endowment for the Humanities, which funded the which funded the Universal Scripts Project (part of the Script Encoding Initiative at UC Berkeley) in respect of the Warang Citi encoding. Any views, findings, conclusions or recommendations expressed in this publication do not necessarily reflect those of the National Endowment of the Humanities.

	118A	118B	118C	118D	118E	118F
0	V 118A0	ᮒ 118B0	ᮓ 118C0	ᮔ 118D0	ᮕ 118E0	ᮖ 118F0
1	ᮗ 118A1	ᮘ 118B1	ᮙ 118C1	ᮚ 118D1	ᮛ 118E1	ᮜ 118F1
2	ᮝ 118A2	ᮞ 118B2	ᮟ 118C2	ᮠ 118D2	ᮡ 118E2	ᮢ 118F2
3	ᮣ 118A3	ᮤ 118B3	ᮥ 118C3	ᮦ 118D3	ᮧ 118E3	
4	ᮩ 118A4	᮪ 118B4	᮫ 118C4	ᮬ 118D4	ᮭ 118E4	
5	ᮯ 118A5	᮰ 118B5	᮱ 118C5	᮲ 118D5	᮳ 118E5	
6	᮵ 118A6	᮶ 118B6	᮷ 118C6	᮸ 118D6	᮹ 118E6	
7	ᮻ 118A7	ᮼ 118B7	ᮽ 118C7	ᮾ 118D7	ᮿ 118E7	
8	ᮽ 118A8	ᮾ 118B8	ᮿ 118C8	ᯀ 118D8	ᯁ 118E8	
9	ᯃ 118A9	ᯄ 118B9	ᯅ 118C9	ᯆ 118D9	ᯇ 118E9	
A	ᯉ 118AA	ᯊ 118BA	ᯋ 118CA	ᯌ 118DA	ᯍ 118EA	
B	ᯏ 118AB	ᯐ 118BB	ᯑ 118CB	ᯒ 118DB	ᯓ 118EB	
C	ᯕ 118AC	ᯖ 118BC	ᯗ 118CC	ᯘ 118DC	ᯙ 118EC	
D	ᯛ 118AD	ᯜ 118BD	ᯝ 118CD	ᯞ 118DD	ᯟ 118ED	
E	ᯡ 118AE	ᯢ 118BE	ᯣ 118CE	ᯤ 118DE	ᯥ 118EE	
F	ᯧ 118AF	ᯨ 118BF	ᯩ 118CF	ᯪ 118DF	ᯫ 118EF	ᯬ 118FF

Uppercase vowels

118A0	∨	WARANG CITI CAPITAL LETTER NGAA
118A1	⌈	WARANG CITI CAPITAL LETTER A
118A2	ƒ	WARANG CITI CAPITAL LETTER WI
118A3	ℒ	WARANG CITI CAPITAL LETTER YU
118A4	℣	WARANG CITI CAPITAL LETTER YA
118A5	℥	WARANG CITI CAPITAL LETTER YO
118A6	Ⓔ	WARANG CITI CAPITAL LETTER II
118A7	Ⓕ	WARANG CITI CAPITAL LETTER UU
118A8	∇	WARANG CITI CAPITAL LETTER E
118A9	ℤ	WARANG CITI CAPITAL LETTER O

Uppercase consonants

118AA	⊘	WARANG CITI CAPITAL LETTER ANG
118AB	Ⓙ	WARANG CITI CAPITAL LETTER GA
118AC	Ⓚ	WARANG CITI CAPITAL LETTER KO
118AD	Ⓛ	WARANG CITI CAPITAL LETTER ENY
118AE	Ⓔ	WARANG CITI CAPITAL LETTER YUJ
118AF	Ⓛ	WARANG CITI CAPITAL LETTER UC
118B0	Ⓜ	WARANG CITI CAPITAL LETTER ENN
118B1	Ⓡ	WARANG CITI CAPITAL LETTER ODD
118B2	ℒ	WARANG CITI CAPITAL LETTER TTE
118B3	Ⓡ	WARANG CITI CAPITAL LETTER NUNG
118B4	Ⓛ	WARANG CITI CAPITAL LETTER DA
118B5	Ⓚ	WARANG CITI CAPITAL LETTER AT
118B6	Ⓛ	WARANG CITI CAPITAL LETTER AM
118B7	Ⓚ	WARANG CITI CAPITAL LETTER BU
118B8	Ⓜ	WARANG CITI CAPITAL LETTER PU
118B9	Ⓡ	WARANG CITI CAPITAL LETTER HIYO
118BA	Ⓡ	WARANG CITI CAPITAL LETTER HOLO
118BB	Ⓡ	WARANG CITI CAPITAL LETTER HORR
118BC	Ⓚ	WARANG CITI CAPITAL LETTER HAR
118BD	Ⓛ	WARANG CITI CAPITAL LETTER SSUU
118BE	Ⓡ	WARANG CITI CAPITAL LETTER SII
118BF	Ⓡ	WARANG CITI CAPITAL LETTER VIYO

Lowercase vowels

118C0	∨	WARANG CITI SMALL LETTER NGAA
118C1	ƒ	WARANG CITI SMALL LETTER A
118C2	ƒ	WARANG CITI SMALL LETTER WI
118C3	ℒ	WARANG CITI SMALL LETTER YU
118C4	℣	WARANG CITI SMALL LETTER YA
118C5	℥	WARANG CITI SMALL LETTER YO
118C6	Ⓔ	WARANG CITI SMALL LETTER II
118C7	Ⓕ	WARANG CITI SMALL LETTER UU
118C8	∇	WARANG CITI SMALL LETTER E
118C9	ℤ	WARANG CITI SMALL LETTER O

Lowercase consonants

118CA	⊘	WARANG CITI SMALL LETTER ANG
118CB	Ⓡ	WARANG CITI SMALL LETTER GA
118CC	Ⓚ	WARANG CITI SMALL LETTER KO
118CD	Ⓛ	WARANG CITI SMALL LETTER ENY
118CE	Ⓔ	WARANG CITI SMALL LETTER YUJ
118CF	Ⓛ	WARANG CITI SMALL LETTER UC
118D0	Ⓜ	WARANG CITI SMALL LETTER ENN
118D1	Ⓡ	WARANG CITI SMALL LETTER ODD
118D2	ℒ	WARANG CITI SMALL LETTER TTE
118D3	Ⓡ	WARANG CITI SMALL LETTER NUNG
118D4	Ⓡ	WARANG CITI SMALL LETTER DA
118D5	Ⓚ	WARANG CITI SMALL LETTER AT
118D6	Ⓛ	WARANG CITI SMALL LETTER AM
118D7	Ⓚ	WARANG CITI SMALL LETTER BU
118D8	Ⓜ	WARANG CITI SMALL LETTER PU
118D9	Ⓡ	WARANG CITI SMALL LETTER HIYO
118DA	Ⓡ	WARANG CITI SMALL LETTER HOLO
118DB	Ⓡ	WARANG CITI SMALL LETTER HORR

118DC	Ⓡ	WARANG CITI SMALL LETTER HAR
118DD	Ⓡ	WARANG CITI SMALL LETTER SSUU
118DE	Ⓡ	WARANG CITI SMALL LETTER SII
118DF	Ⓡ	WARANG CITI SMALL LETTER VIYO

Digits

118E0	0	WARANG CITI DIGIT ZERO
118E1	1	WARANG CITI DIGIT ONE
118E2	2	WARANG CITI DIGIT TWO
118E3	3	WARANG CITI DIGIT THREE
118E4	4	WARANG CITI DIGIT FOUR
118E5	5	WARANG CITI DIGIT FIVE
118E6	6	WARANG CITI DIGIT SIX
118E7	7	WARANG CITI DIGIT SEVEN
118E8	8	WARANG CITI DIGIT EIGHT
118E9	9	WARANG CITI DIGIT NINE


Numbers

118EA	10	WARANG CITI NUMBER TEN
118EB	20	WARANG CITI NUMBER TWENTY
118EC	30	WARANG CITI NUMBER THIRTY
118ED	40	WARANG CITI NUMBER FORTY
118EE	50	WARANG CITI NUMBER FIFTY
118EF	60	WARANG CITI NUMBER SIXTY
118F0	70	WARANG CITI NUMBER SEVENTY
118F1	80	WARANG CITI NUMBER EIGHTY
118F2	90	WARANG CITI NUMBER NINETY

Signs

118FF	Ⓡ	WARANG CITI OM
-------	---	----------------

Originalschr. Groß- Buchstabe	Klein- Buchstabe	Transliteration		Bezeichnung der Grapheme		Phonement- sprechung
		Devanāgarī	Latein- Schrift	Devanāgarī	Phonetisch	
E	ε	ज	J j	बिज्	yü'j	j
प	५	ब	C c	बिच्	ʔüc	c
न	३	न	N n	त्रैण	ʔɛɳ̄	n
ड	१	ड	D d	ओड्	ʔɔ'd	d
ट	८	ट	T t	टेःए	tɛʔ	t
न	२	न	N n	नुङ्	nunɳ̄	n
द	३	द	D d	दःऽ	daʔ	d
त	६	त	T t	औत	ʔat	t
म	९	म	M m	ऽह्म	ʔam	m
ब	०	ब	B b	बु	bu	b
प	७	प	P p	पुःऽ	puʔ	p
ह	५	ह	H h	ह्यी	hiyo	h , Vokaldehnung
ल	७	ल	L l	ह्ली	holo	l
र	५	ड़	R r	हड़	hor	r
र	४	र	R r	हर	har	r
ष	४	ष, श	S s	षु	śu:	ś , s
स	८	स	S s	सी	sī:	s
८०	५०	हब	HB hb	—	—	b , w

5. Zeichen für die heilige Silbe  OM

6. Zahlzeichen

१	२	३	४	५	६	७	८	९
१०	२०	३०	४०	५०	६०	७०	८०	९०
aber	११	२३	usw.	५७				

Figure 2b. Description of the alphabet from Pinnow 1972.

1ZUJTF



ε...γ...δ εφθ ζητις !
 Τφχθς Λιλιτιχ θζςς ! ιφχθς θεχςς θζςς !!
 ιφχθς ιοιςχβ υςςυ!!! ιφχθς ιηζεφθ ζητις!!!!
 θυθυ ον οια Γ θ Δ
 ♡ ♡ ϑ Ν υν ον.

ηζθ ηιθυ ηιθυ—ειχθθ ειχθθ υιχ υθθ
 εζ υυυζ ζιζθ εζθ ου ιηζιυ
 υιχθθ ουυθθ εςχθθ ριιθθ ριθθ χζςιι
 οχθς υυυζ ιθυ ηθυ εςιιυ.
 Τζιζχ υςςχ υιιχ ρειχ θςειχ ιυ Δ'
 ηυθζιυ θυθζιυ θυθυ ιηζιυ εςειυ
 ιθ, θςχθ θιιχθ θιιχθ ιηειχ θςειχθ
 υςυιιη, υυυθθθυ θςθ εθχς ηζ ♡ ιοθης.
 Κιιηθ χιιθθθθθ υφχθθ θζθθ θζθθ
 ♡ ιοιςχβ εοθχιυ Δ' εοθχς εοθθςυ ειις.

υυιιτ υζιιτ

Seite 1 aus *Shar Hora* „Der Weg zum Himmel“ (Transliteration 6.1.4)

Figure 3. Sample text from Pinnow 1972.

᳚

᳚	᳚	बो	हं ᳚᳚
᳚	᳚	हो	ल ᳚᳚
᳚	᳚	हड़	ह ᳚᳚
᳚	᳚	हर	र ᳚᳚
᳚	᳚	ष	ष ᳚᳚᳚᳚᳚ ᳚᳚
᳚	᳚	सी	स ᳚᳚᳚ ᳚᳚
	᳚᳚ ᳚᳚᳚		᳚᳚᳚᳚᳚ ᳚᳚᳚᳚
	अप पाट		तृतीय पाठः

᳚᳚᳚᳚᳚ ᳚᳚᳚᳚᳚᳚
ककर ककहारा

V— ᳚᳚, ᳚᳚, ᳚᳚, ᳚᳚, ᳚᳚, ᳚᳚, ᳚᳚, ᳚᳚, ᳚᳚, ᳚᳚,
अं, गं, कं, जं, चं, णं, डं, टं,
᳚᳚, ᳚᳚, ᳚᳚, ᳚᳚, ᳚᳚, ᳚᳚, ᳚᳚, ᳚᳚, ᳚᳚,
नं, दं, तं, मं, वं, पं, हं, लं, ङं,
᳚᳚, ᳚᳚, ᳚᳚.
रं, षं, सं।

᳚— ᳚᳚, ᳚᳚, ᳚᳚, ᳚᳚, ᳚᳚, ᳚᳚, ᳚᳚, ᳚᳚, ᳚᳚,
गा, का, जा, चा, णा, डा, टा, ना,
᳚᳚, ᳚᳚, ᳚᳚, ᳚᳚, ᳚᳚, ᳚᳚, ᳚᳚, ᳚᳚, ᳚᳚,
दा, ता, मा, वा, पा, हा, ला, डा, रा,
᳚᳚, ᳚᳚,
षा, सा।

᳚— ᳚᳚, ᳚᳚, ᳚᳚, ᳚᳚, ᳚᳚, ᳚᳚, ᳚᳚, ᳚᳚, ᳚᳚, ᳚᳚,
गि, कि, जि, चि, णि, डि, टि, नि, दि, ति,

Figure 4a. Sample text with syllabary from Pinnow 1972.

4

8

५f, ०f, १f, ७f, ७f, ५f, ४f, ४f, ५f, ५f.
मि, वि, पि, हि, लि, डि, रि, षि, सि।

L— १L, १L, ५L, ६L, १L, १L, १L, १L, १L, १L,
ग, कु, ङ, जु, चु, ण, ड, ट, न, द,
६L, १L, ०L, १L, ७L, ७L, ७L, ४L, ४L, ५L.
त, म, व, प, ह, ल, ड, रु, ष, सु।

V— १V, १V, ५V, ६V, १V, १V, १V, १V, १V, १V,
ग, के, जे, जे, चे, णे, डे, टे, ने, दे,
६V, १V, ०V, १V, ७V, ७V, ७V, ४V, ४V, ४V, ५V.
ते, मे, वे, पे, हे, ले, डे, रे, षे, से।


Z— १Z, १Z, ५Z, ६Z, १Z, १Z, १Z, १Z, १Z, १Z,
गो, को, जो, जो, चो, णो, डो, टो, नो, दो,
६Z, १Z, ०Z, १Z, ७Z, ७Z, ७Z, ४Z, ४Z, ४Z, ५Z.
तो, मो, वो, पो, हो, लो, डो, रो, षो, सो।

Y— १Y, १Y, ५Y, ६Y, १Y, १Y, १Y, १Y, १Y, १Y,
गः, कः, जः, जः, चः, णः, डः, टः, नः,
५Y, ६Y, १Y, ०Y, १Y, ७Y, ७Y, ७Y, ४Y, ४Y,
दः, तः, मः, वः, पः, हः, लः, डः, रः,
४Y, ५Y.
षः, सः।

H— १H, १H, ५H, ६H, १H, १H, १H, १H, १H, १H,
गै, कै, जै, जै, चै, णै, डै, टै, नै,
५H, ६H, १H, ०H, १H, ७H, ७H, ७H, ४H, ४H,
दै, तै, मै, वै, पै, है, लै, डै, रै,
४H, ५H.
षै, सै।

Seite 4 aus *Ho H(a)y(a)m P(a)ham Puti*

Figure 4b. Sample text with syllabary from Pinnow 1972.

अध्याय 5  **पाठ**
अध्ययनार्थ कुञ्जी Key to read the book
एव ०२४३ - स्वर वर्ण - Vowels
पाठ १२ - अक्षरें - Alphabets

बड़ा Capitals	छोटा Small	उच्चारण Pronunciation	हिन्दी Hindi	अंग्रेजी English
V	v	ड्	-	n
।	।	ऽ, अ	।, अ	a
f	f	विःइ	ि	i
L	L	युःउ	ु	u
Y	Y	यःऽ	ः	?
H	H	यो	य	ea
E	E	इ	ई,ी	ii
T	T	उ	उ,ू	uu
A	A	ए	,,ए	e
N	N	।अ	।,ओ	o
०३१ ०२४३ व्यन्जन वर्ण - Consonant				
३	३	।ङ्	ङ	ng
।	।	ग	ग	g
9	9	क	क	k, ch
6	6	विञ्	ञ	n
8	8	विज्	ज	j
8	8	विच्	च्	ch, c
।	।	एण	ण	N
।	।	।ङ्	ङ	d
।	।	टेःए	ट	t
।	।	नुङ	न	n
।	।	दःऽ	द	d
6	6	।त्	त्	t
4	4	ऽह	म्	m
4	4	वू	व	b
0	0	पुःउ	प	p
U	U	ह्यो	ह	h
0	0	हलौ	ल्	l
5	5	हड	ड्	!
4	4	हऽ	र्	r
4	4	षू	ष्	sh
।	।	सी	स्	s

नोट :- । + U के सम्मिश्रण से यह वर्ण बना है।

Figure 5. Alphabet chart from the book *शिशु हलाम*, 2003.

In the last line the letter **।** VIYO is given with the text “। + U ke sammishraṇa yah varna banā hai” ‘from a ligature of । + U this character is made’.



Warang Citi Alphabet

Warang Citi Alphabet

Warang Citi alphabet text (left column)

Warang Citi alphabet text (right column)

Warang Citi alphabet text (right column)

Warang Citi alphabet text (right column)

Figure 7. Part of a newsletter in Warang Citi.

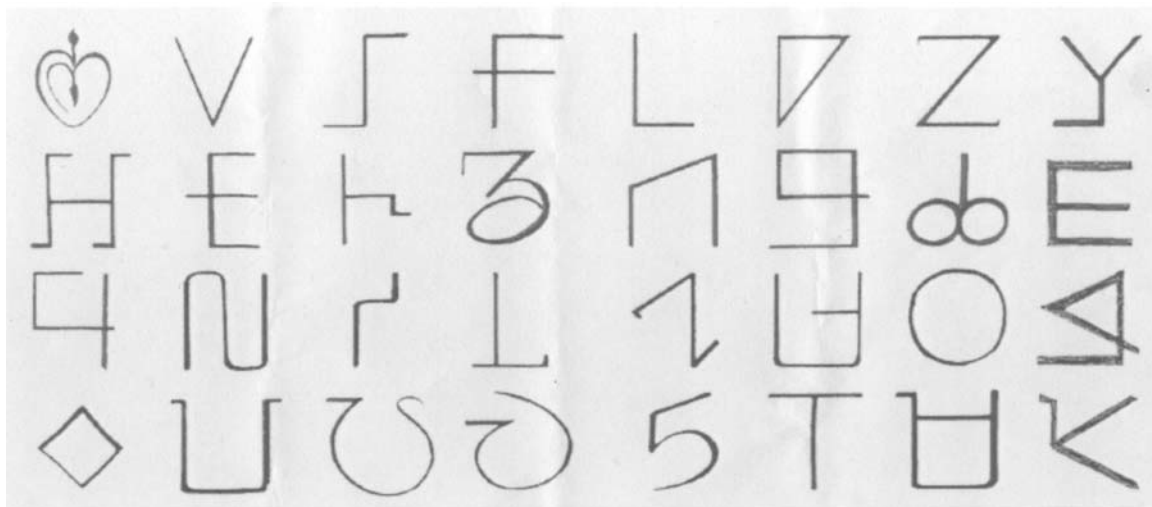


Figure 8. Warang Citi alphabet as written out by K. C. Naik.

ᄃᄃᄃ ᄃᄃ ᄃᄃᄃᄃᄃ ᄃᄃᄃ ᄃᄃᄃᄃ ᄃᄃᄃᄃᄃ ᄃᄃᄃᄃᄃ
 (Prime Minister) ᄃᄃᄃᄃᄃ ᄃᄃᄃᄃᄃ ᄃᄃᄃᄃᄃ
 ᄃᄃᄃ ᄃᄃᄃᄃᄃᄃ ᄃᄃᄃ ᄃᄃᄃᄃ ᄃᄃᄃᄃᄃᄃ ᄃᄃᄃᄃᄃ

Figure 16. Text showing ᄃᄃᄃᄃᄃ *Paruṣottama* /puru sutam/, with a ᄃᄃ conjunct.

ᄃᄃᄃᄃ ᄃᄃᄃᄃ ᄃᄃᄃᄃ ᄃᄃ
 ᄃᄃᄃᄃ ᄃᄃᄃᄃ ᄃᄃᄃᄃ ᄃᄃᄃᄃᄃ

Figure 17. Text showing ᄃᄃᄃᄃ *triyu* /tiriyu/, with a ᄃᄃ conjunct.

ᄃᄃᄃ ᄃᄃᄃᄃ ᄃᄃ ᄃᄃ ᄃᄃ ᄃᄃᄃᄃ ᄃᄃᄃᄃᄃ;

Figure 18. Text showing ᄃᄃᄃᄃ *Tsiṅa* /tisij/, with a ᄃᄃ conjunct.

ᄃᄃᄃ. ᄃᄃᄃ ᄃᄃᄃᄃᄃ ᄃᄃ ᄃᄃᄃᄃᄃ ᄃᄃᄃ ᄃᄃᄃᄃ. ᄃᄃ

Figure 19. Text showing ᄃᄃᄃ *Bha~Baha* /ba:/, without a ᄃᄃ conjunct.

ᄃᄃᄃ ᄃᄃᄃᄃᄃ ᄃᄃ ᄃᄃᄃᄃᄃ ᄃᄃᄃᄃ
 “ᄃᄃᄃᄃᄃ ᄃᄃᄃ ᄃᄃᄃᄃᄃ” .

Figure 20. Text showing ᄃᄃᄃ *Bha* /ba:/, with a ᄃᄃᄃ conjunct.

ᄃᄃ ᄃᄃᄃᄃᄃ ᄃᄃᄃᄃᄃ ᄃᄃᄃᄃᄃ ᄃᄃᄃᄃ.

Figure 21. Text showing ᄃᄃᄃ *bha* /ba:/, with a ᄃᄃᄃ conjunct.

ᄃᄃᄃᄃᄃᄃᄃ ᄃᄃᄃ ᄃᄃᄃᄃ. ᄃᄃᄃ ᄃᄃ ᄃᄃᄃᄃᄃ, ᄃᄃᄃᄃᄃᄃᄃ

Figure 22. Text showing ᄃᄃᄃᄃᄃᄃ *juppuāhṇ*, (*juppuāḥ*) /jupuwaʔ/, with a ᄃᄃᄃ conjunct.

ᄃᄃ ᄃᄃᄃᄃᄃᄃᄃ — ᄃᄃᄃᄃᄃ ᄃᄃᄃᄃ ᄃᄃ ᄃᄃᄃᄃᄃᄃ
 ᄃᄃᄃᄃᄃᄃ — ᄃᄃᄃᄃᄃ — ᄃᄃᄃᄃᄃ — ᄃᄃᄃᄃᄃ ᄃᄃᄃ ᄃᄃᄃᄃᄃ
 ᄃᄃᄃᄃᄃᄃᄃᄃ |

Figure 23. Text showing ᄃᄃᄃᄃ *parra* /par/ and ᄃᄃᄃᄃᄃ *porra* /por/, each with a ᄃᄃᄃ conjunct. It appears that the right-side-up conjunct form on ᄃᄃᄃᄃ *parra* is an error and should be ᄃᄃᄃᄃ *parra*.

ᄃᄃᄃᄃᄃ ᄃᄃ ᄃᄃᄃᄃᄃᄃ ᄃᄃᄃᄃᄃ ᄃᄃᄃᄃ ᄃᄃ ᄃᄃᄃᄃᄃᄃ ᄃᄃᄃᄃ.
 ᄃᄃᄃᄃ ᄃᄃᄃᄃᄃ ᄃᄃ ᄃᄃᄃᄃ ᄃᄃᄃᄃᄃ ᄃᄃᄃᄃᄃ. ᄃᄃᄃᄃᄃᄃ
 ᄃᄃᄃᄃᄃ ᄃᄃ ᄃᄃᄃᄃᄃᄃᄃ ᄃᄃᄃᄃᄃ ᄃᄃᄃᄃᄃ ᄃᄃᄃᄃᄃ.

Figure 24. Text showing ᄃᄃᄃᄃ *olla* /ol/ and ᄃᄃᄃᄃ *olla*, each with a ᄃᄃᄃ conjunct. It appears that the right-side-up conjunct form on ᄃᄃᄃᄃ *olla* is an error and should be ᄃᄃᄃᄃ *olla*.

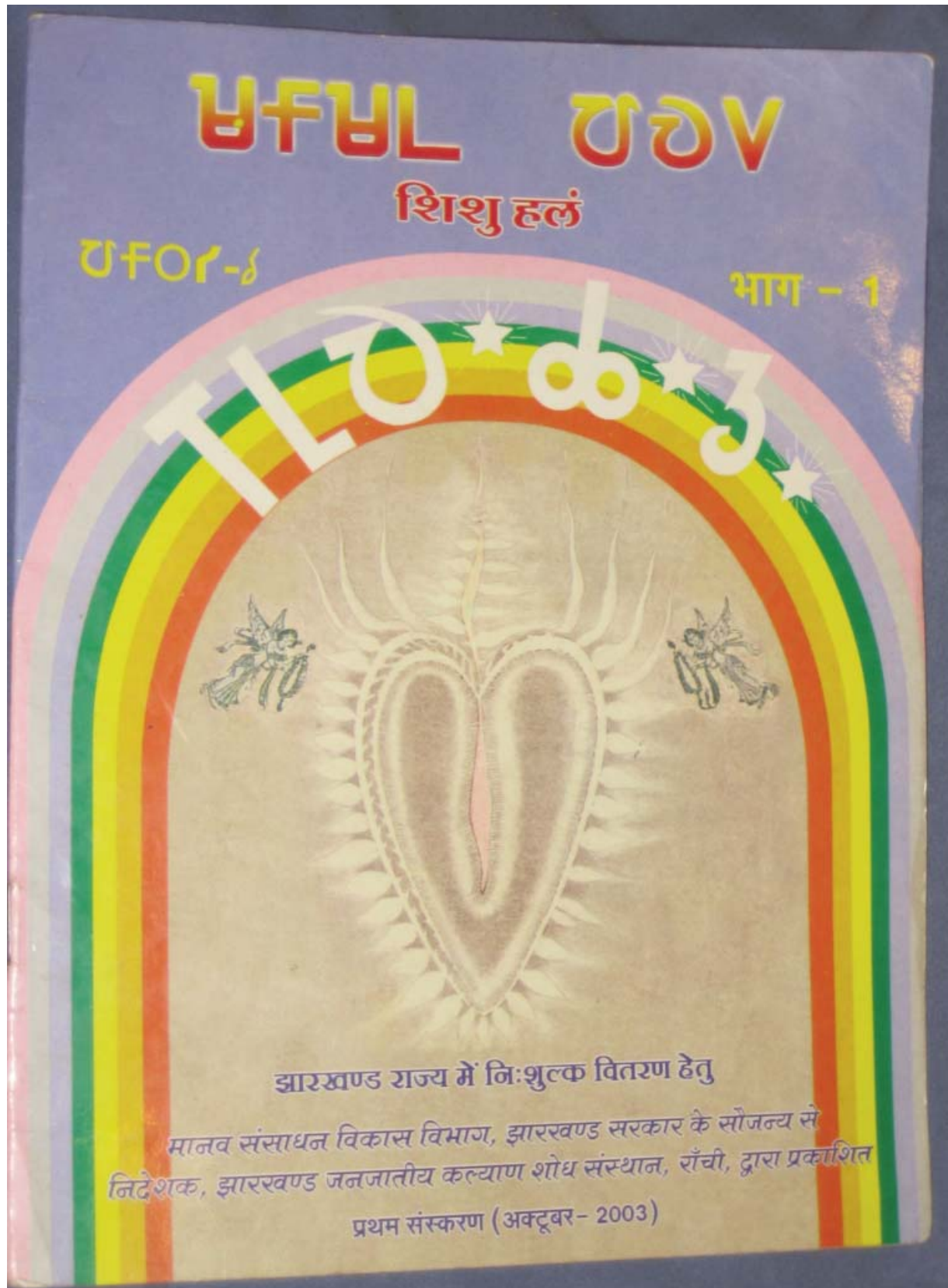


Figure 25. The cover of UFUL UDU (Şiřu halam).

A. Administrative

1. Title

Revised proposal for encoding the Warang Citi script in the SMP of the UCS

2. Requester's name

UC Berkeley Script Encoding Initiative (Universal Scripts Project)

3. Requester type (Member body/Liaison/Individual contribution)

Liaison contribution.

4. Submission date

2012-04-19

5. Requester's reference (if applicable)

6. Choose one of the following:

6a. This is a complete proposal

Yes.

6b. More information will be provided later

No.

B. Technical – General

1. Choose one of the following:

1a. This proposal is for a new script (set of characters)

Yes.

1b. Proposed name of script

Warang Citi.

1c. The proposal is for addition of character(s) to an existing block

No.

1d. Name of the existing block

2. Number of characters in proposal

84.

3. Proposed category (A-Contemporary; B.1-Specialized (small collection); B.2-Specialized (large collection); C-Major extinct; D-Attested extinct; E-Minor extinct; F-Archaic Hieroglyphic or Ideographic; G-Obscure or questionable usage symbols)

Category A.

4a. Is a repertoire including character names provided?

Yes.

4b. If YES, are the names in accordance with the “character naming guidelines” in Annex L of P&P document?

Yes.

4c. Are the character shapes attached in a legible form suitable for review?

Yes.

5a. Who will provide the appropriate computerized font (ordered preference: True Type, or PostScript format) for publishing the standard?

Michael Everson.

5b. If available now, identify source(s) for the font (include address, e-mail, ftp-site, etc.) and indicate the tools used:

Michael Everson, Fontographer.

6a. Are references (to other character sets, dictionaries, descriptive texts etc.) provided?

Yes.

6b. Are published examples of use (such as samples from newspapers, magazines, or other sources) of proposed characters attached?

Yes.

7. Does the proposal address other aspects of character data processing (if applicable) such as input, presentation, sorting, searching, indexing, transliteration etc. (if yes please enclose information)?

Yes.

8. Submitters are invited to provide any additional information about Properties of the proposed Character(s) or Script that will assist in correct understanding of and correct linguistic processing of the proposed character(s) or script. Examples of such properties are: Casing information, Numeric information, Currency information, Display behaviour information such as line breaks, widths etc., Combining behaviour, Spacing behaviour, Directional behaviour, Default Collation behaviour, relevance in Mark Up contexts, Compatibility equivalence and other Unicode normalization related information. See the Unicode standard at <http://www.unicode.org> for such information on other scripts. Also see Unicode Character Database <http://www.unicode.org/Public/UNIDATA/UnicodeCharacterDatabase.html> and associated Unicode Technical Reports for information needed for consideration by the Unicode Technical Committee for inclusion in the Unicode Standard.

See above.

C. Technical – Justification

1. Has this proposal for addition of character(s) been submitted before? If YES, explain.

Yes, in N1958, N3411, N3668.

2a. Has contact been made to members of the user community (for example: National Body, user groups of the script or characters, other experts, etc.)?

Yes.

2b. If YES, with whom?

Dobro Buriuli (teacher of Warang Citi), Chandra Mohan Haibru, K.C. Naik Biruli, Anna Pucilowski, K. David Harrison, Gregory Anderson.

2c. If YES, available relevant documents

3. Information on the user community for the proposed characters (for example: size, demographics, information technology use, or publishing use) is included?

Speakers of the Ho language, whose population is 1,026,000, with 25%-50% literacy, according to the SIL *Ethnologue*. The *Ethnologue* mentions only the Oriya and Devanagari script areas.

4a. The context of use for the proposed characters (type of use; common or rare)

To write the Ho language.

4b. Reference

5a. Are the proposed characters in current use by the user community?

Yes.

5b. If YES, where?

In India.

6a. After giving due considerations to the principles in the P&P document must the proposed characters be entirely in the BMP?

Yes.

6b. If YES, is a rationale provided?

Yes.

6c. If YES, reference

Contemporary use and accordance with the Roadmap.

7. Should the proposed characters be kept together in a contiguous range (rather than being scattered)?

Yes.

8a. Can any of the proposed characters be considered a presentation form of an existing character or character sequence?

No.

8b. If YES, is a rationale for its inclusion provided?

8c. If YES, reference

9a. Can any of the proposed characters be encoded using a composed character sequence of either existing characters or other proposed characters?

No.

9b. If YES, is a rationale for its inclusion provided?

9c. If YES, reference

10a. Can any of the proposed character(s) be considered to be similar (in appearance or function) to an existing character?

No.

10b. If YES, is a rationale for its inclusion provided?

10c. If YES, reference

11a. Does the proposal include use of combining characters and/or use of composite sequences?

No.

11b. If YES, is a rationale for such use provided?

11c. If YES, reference

11d. Is a list of composite sequences and their corresponding glyph images (graphic symbols) provided?

No.

11e. If YES, reference

12a. Does the proposal contain characters with any special properties such as control function or similar semantics?

No.

12b. If YES, describe in detail (include attachment if necessary)

13a. Does the proposal contain any Ideographic compatibility character(s)?

No.

13b. If YES, is the equivalent corresponding unified ideographic character(s) identified?