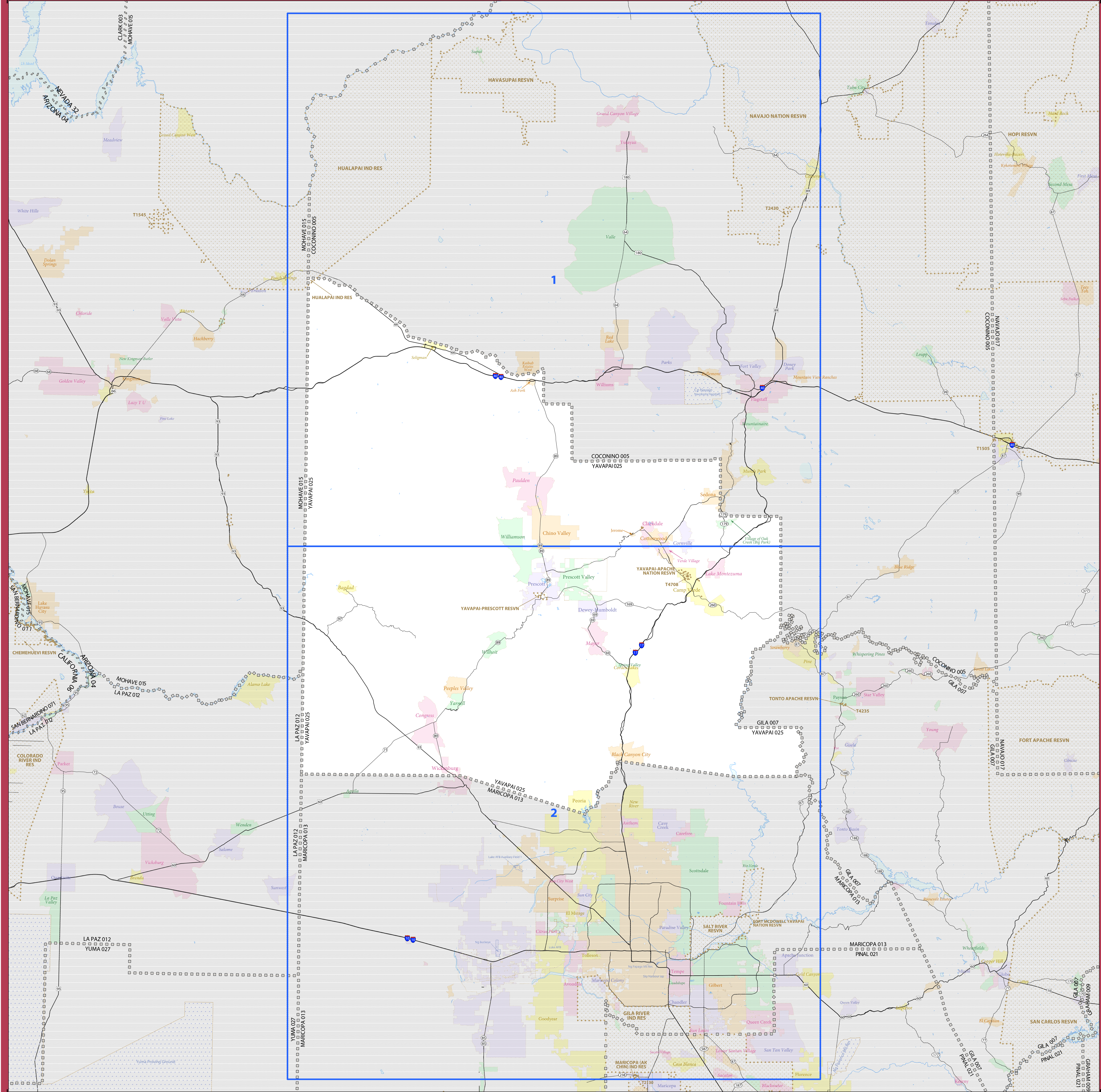


2020 CENSUS - SCHOOL DISTRICT REFERENCE MAP: Yavapai County, AZ



SYMBOL DESCRIPTION	SYMBOL	LABEL STYLE
International	☆☆☆☆☆	CANADA
Federal American Indian Reservation	L'ANSE RES 1880
Off-Reservation Trust Land	T1880
State American Indian Reservation	Tama Res 9400
Alaska Native Regional Corporation	+++++	NANA ANRC 52120
State (or statistically equivalent entity)		NEW YORK 36
County (or statistically equivalent entity)	□□□□□	ERIE 029
Minor Civil Division (MCD) ^{1,2}	○ ○ ○ ○ ○	Bristol town 07485
Consolidated City	○ ○ ○ ○ ○	MILFORD 47500
Incorporated Place ^{3,4}	■ ■ ■ ■ ■	Davis 18100
Census Designated Place (CDP) ⁵	■ ■ ■ ■ ■	Incline Village 35100
Unified School District ⁴	UNI 03370
Secondary School District ⁴	SEC 99965
Elementary School District ⁴	ELM 02220

DESCRIPTION	SYMBOL	DESCRIPTION	SYMBOL
Interstate	— 4 —	Water Body
U.S. Highway	— 2 —	Military
State Highway or State Road	— 1 —	National or State Park, Forest, or Recreation Area
Other Road	Yosemite NP
4WD Trail, Steamer, Alley, Walkway, or Ferry	Inset Area
Railroad	Outside Subject Area
Pipeline or Power Line		
Ridge or Fence		
Nonratable Boundary or Feature Not Elsewhere Classified		

Where international, state, county, and/or MCD boundaries coincide, the map shows the boundary symbol for only the highest-ranking of these boundaries.

Geographic area names are followed by either their FIPS or census code.

1 MCD boundaries are shown in the following states in which some or all MCDs function as general-purpose governmental units: Connecticut, Illinois, Indiana, Kansas, Maine, Massachusetts, Michigan, Minnesota, Missouri, Nebraska, New Hampshire, New Jersey, New York, North Dakota, Ohio, Pennsylvania, Rhode Island, South Dakota, Vermont, and Wisconsin. (Note that Illinois and Nebraska have some counties covered by nongovernmental precincts and Missouri has most counties covered by nongovernmental townships.)

2 A " " following an MCD name denotes a false MCD. A " " following a place name indicates that a false MCD exists with the same name and FIPS code as the place; the false MCD label is not shown.

3 Place label color corresponds to the place fill color.

4 A " " following a label indicates that the school district is in more than one county.

Due to space limitations, some areas and features such as water bodies, parks, and roads may not be labeled.

Note: This index map sheet provides the map sheet configuration in relation to the subject entity. Due to scale limitations, map content may be simplified. Refer to parent and/or inset map sheets for detailed map content.

- ### OFF-RESERVATION TRUST LAND NAMES
- T1505 Hopi
 - T1545 Hualapai
 - T2130 Maricopa (Ak Chin)
 - T2430 Navajo Nation
 - T4235 Tonto Apache
 - T4708 Yavapai-Apache Nation

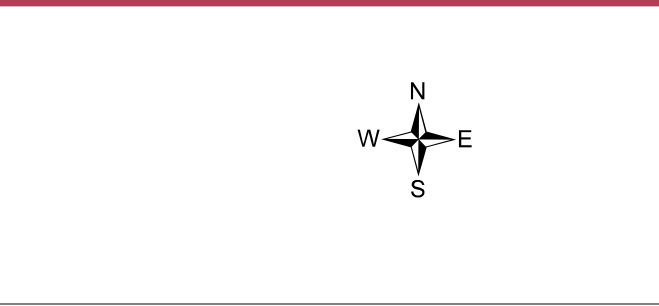
All legal boundaries and names are as of January 1, 2020. The boundaries shown on this map are for Census Bureau statistical data collection and tabulation purposes only; their depiction and designation for statistical purposes does not constitute a determination of jurisdictional authority or rights of ownership or entitlement.

Geographic Vintage: 2020 Census (reference date: January 1, 2020)
Data Source: U.S. Census Bureau's MAINTIGER database (TAB20)
Map Created by Geography Division: December 22, 2020

U.S. DEPARTMENT OF COMMERCE U.S. Census Bureau

Projection: Albers Equal Area Conic
Datum: NAD 83
Spheroid: GRS 80
1st Standard Parallel: 32 16 37
2nd Standard Parallel: 36 03 21
Central Meridian: -111 55 48
Latitude of Projection's Origin: 31 19 56
False Easting: 0
False Northing: 0

Scale: 1:151,749

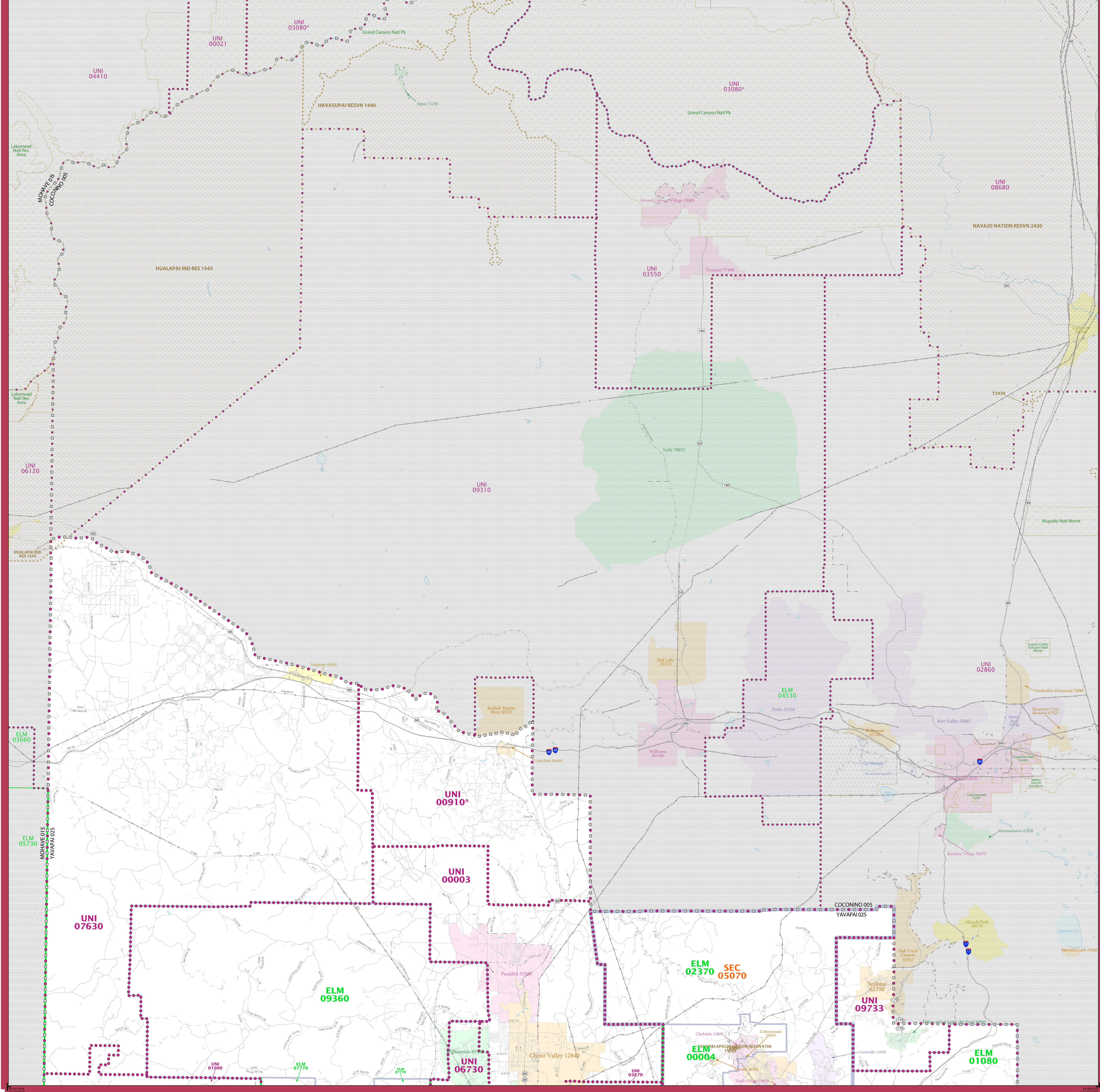


Total Sheets: 3 (Index 1; Parent 2; Inset 0)

NAME: Yavapai County (025)
ENTITY TYPE: County or statistically equivalent entity
ST: Arizona (04)

2020 CENSUS SD REF MAP (INDEX)
Sheet ID: 25150402000

2020 CENSUS - SCHOOL DISTRICT REFERENCE MAP: Yavapai County, AZ



SYMBOL DESCRIPTION	SYMBOL	LABEL STYLE
International	☆☆☆☆☆	CANADA
Federal American Indian Reservation	[Dotted Pattern]	L'ANSE RES 1880
Off-Reservation Trust Land	[Dotted Pattern]	T1880
State American Indian Reservation	[Dotted Pattern]	Tama Res 9400
Alaska Native Regional Corporation	+++++	NANA ANRC 52120
State (or statistically equivalent entity)		NEW YORK 36
County (or statistically equivalent entity)	□□□□□	ERIE 029
Minor Civil Division (MCD) ^{1,2}	○ ○ ○ ○ ○	Bristol town 07485
Consolidated City	● ● ● ● ●	MILFORD 47500
Incorporated Place ^{3,4}	[Color Fill]	Davis 18100
Census Designated Place (CDP) ⁵	[Color Fill]	Incline Village 35100
Unified School District ⁴	[Dotted Line]	UNI 03370
Secondary School District ⁴	[Thick Line]	SEC 99965
Elementary School District ⁴	[Thin Line]	ELM 02220

DESCRIPTION	SYMBOL	DESCRIPTION	SYMBOL
Interstate	[Blue Line]	Water Body	[Blue Area]
U.S. Highway	[Yellow Line]	Military	[Green Line]
State Highway or State Road	[Orange Line]	National or State Park, Forest, or Recreation Area	[Green Area]
Other Road	[Grey Line]	Inset Area	[Green Area]
4WD Trail, Steepway, Alley, Walkway, or Ferry	[Dashed Line]	Outside Subject Area	[Grey Area]
Railroad	[Black Line]		
Pipeline or Power Line	[Black Line]		
Ridge or Fence	[Black Line]		
Nonstable Boundary or Feature Not Elsewhere Classified	[Dashed Line]		

Where international, state, county, and/or MCD boundaries coincide, the map shows the boundary symbol for only the highest-ranking of these boundaries.

Geographic area names are followed by either their FIPS or census code.

1 MCD boundaries are shown in the following states in which some or all MCDs function as general-purpose governmental units: Connecticut, Illinois, Indiana, Kansas, Maine, Massachusetts, Michigan, Minnesota, Missouri, Nebraska, New Hampshire, New Jersey, New York, North Dakota, Ohio, Pennsylvania, Rhode Island, South Dakota, Vermont, and Wisconsin. (Note that Illinois and Nebraska have some counties covered by nongovernmental precincts and Missouri has most counties covered by nongovernmental townships.)

2 A " " following an MCD name denotes a false MCD. A " " following a place name indicates that a false MCD exists with the same name and FIPS code as the place; the false MCD label is not shown.

3 Place label color corresponds to the place fill color.

4 A " " following a label indicates that the school district is in more than one county.

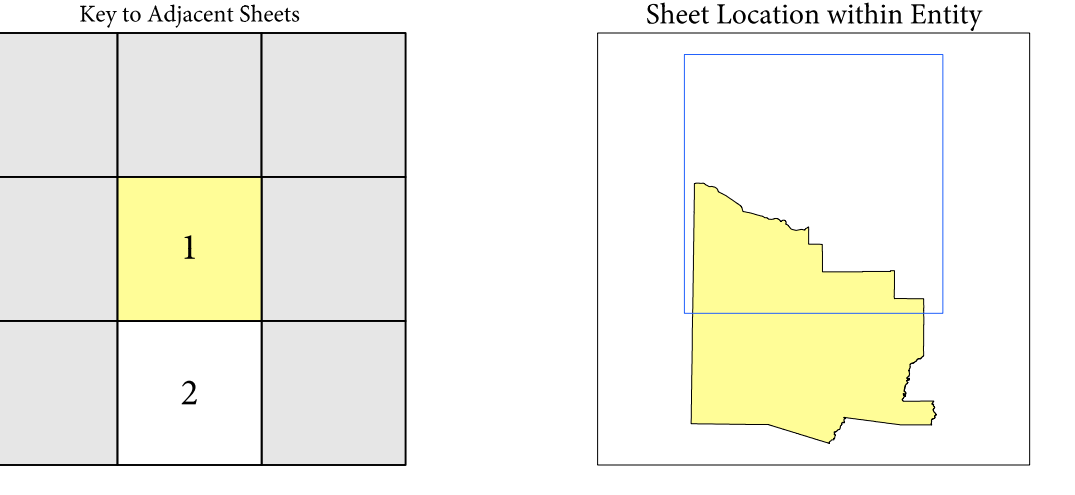
Due to space limitations, some areas and features such as water bodies, parks, and roads may not be labeled.

OFF-RESERVATION TRUST LAND NAMES

12430	Navajo Nation
14708	Yavapai-Apache Nation

SUBJECT AREA SCHOOL DISTRICTS ON MAP SHEET

TYPE	CODE	NAME
ELM	0004	Clarkdale-Jerome Elementary District
ELM	01080	Bever Creek Elementary District
ELM	02170	Cottonwood Oak Creek Elementary District
ELM	07770	Skull Valley Elementary District
ELM	09360	Williamson Valley Elementary School District
SEC	05070	Mingus Union High School District
UNI	00003	Chino Valley Unified District
UNI	00910	Ash Fork Joint Unified District
UNI	01000	Bagdad Unified District
UNI	03870	Humboldt Unified District
UNI	06730	Prescott Unified District
UNI	07630	Seligman Unified District
UNI	09733	Sedona-Oak Creek Joint Unified District



Sheet 1 of 2 PARENT sheets
Total Sheets: 3 (Index 1; Parent 2; Inset 0)

All legal boundaries and names are as of January 1, 2020. The boundaries shown on this map are for Census Bureau statistical data collection and tabulation purposes only; their depiction and designation for statistical purposes does not constitute a determination of jurisdictional authority or rights of ownership or entitlement.

Geographic: Vintage: 2020 Census (reference date: January 1, 2020)
Data Source: U.S. Census Bureau's MAINTIGR database (TAB20)
Map Created by Geography Division: December 22, 2020

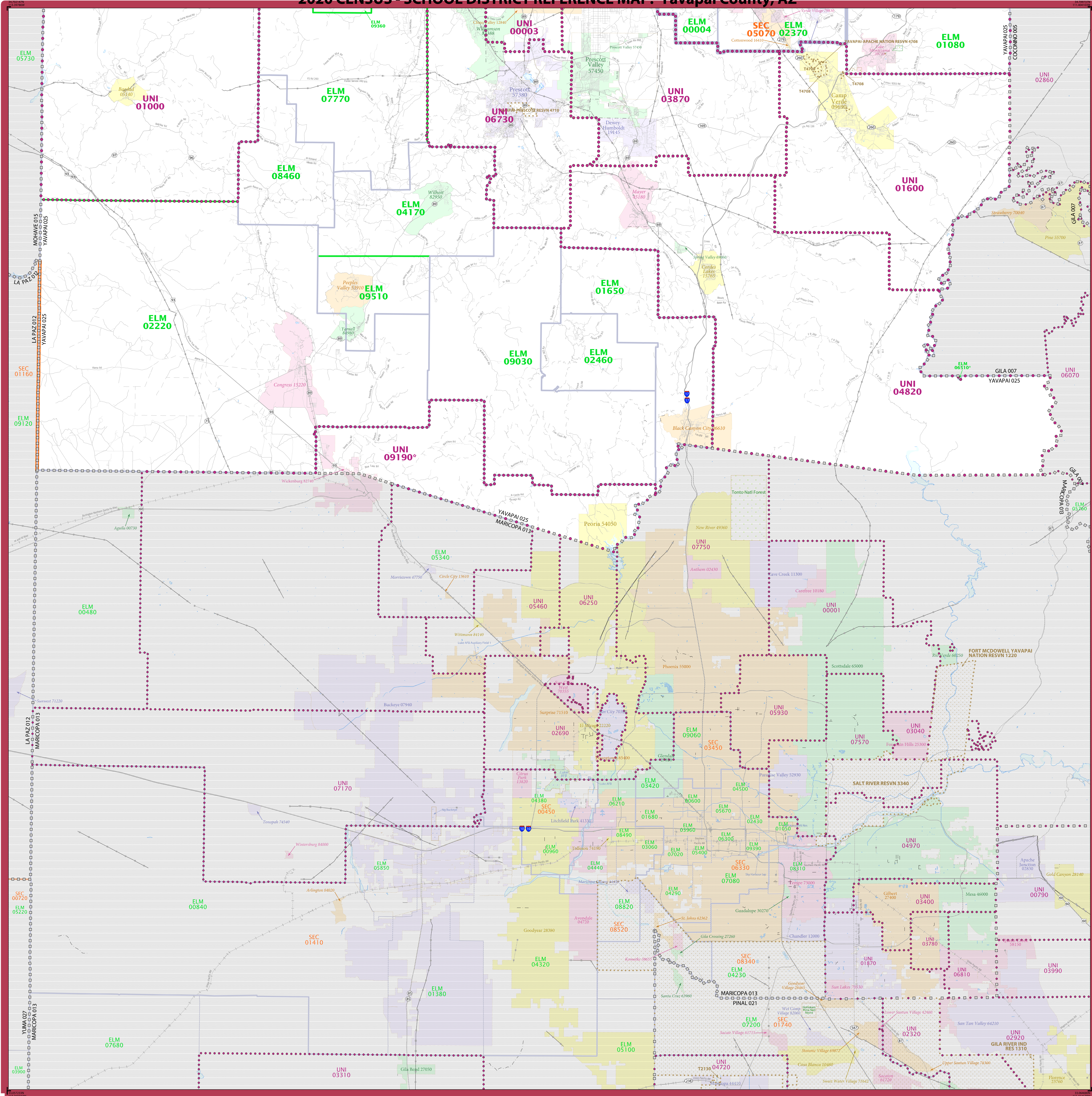
U.S. DEPARTMENT OF COMMERCE U.S. Census Bureau

Projection: Albers Equal Area Conic
Datum: NAD83
Spheroid: GRS 80
1st Standard Parallel: 32 16 37
2nd Standard Parallel: 36 03 21
Central Meridian: -111 55 48
Latitude of Projection's Origin: 31 19 56
False Easting: 0
False Northing: 0

The plotted map scale is 1:250,000

United States Census 2020

2020 CENSUS - SCHOOL DISTRICT REFERENCE MAP: Yavapai County, AZ



LEGEND

SYMBOL DESCRIPTION	SYMBOL	LABEL STYLE
International	☆☆☆☆	CANADA
Federal American Indian Reservation	[Dotted pattern]	L'ANSE RES 1880
Off-Reservation Trust Land	[Dotted pattern]	T1880
State American Indian Reservation	[Dotted pattern]	Tama Res 9400
Alaska Native Regional Corporation	+++++	NANA ANRC 52120
State (or statistically equivalent entity)	[Dashed line]	NEW YORK 36
County (or statistically equivalent entity)	[Dotted line]	ERIE 029
Minor Civil Division (MCD) ^{1,2}	[Dotted line]	Bristol town 07485
Consolidated City	[Dotted line]	MILFORD 47500
Incorporated Place ^{3,4}	[Dotted line]	Davis 18100
Census Designated Place (CDP) ⁵	[Dotted line]	Incline Village 35100
Unified School District ⁴	[Dotted line]	UNI 03370
Secondary School District ⁴	[Dotted line]	SEC 99965
Elementary School District ⁴	[Dotted line]	ELM 02220

DESCRIPTION	SYMBOL	DESCRIPTION	SYMBOL
Interstate	[Blue line with shield]	Water Body	[Blue area]
U.S. Highway	[Grey line with shield]	Military	[Blue line with shield]
State Highway or State Road	[Grey line with shield]	National or State Park, Forest, or Recreation Area	[Green area]
Other Road	[Grey line]	Yosemite NP	[Green area]
Railroad	[Black line with cross-ticks]	Inset Area	[Grey area]
Pipeline or Power Line	[Black line]	Outside Subject Area	[Grey area]
Ridge or Fence	[Black line]		
Navigable Boundary or Feature Not Elsewhere Classified	[Black line]		

Where international, state, county, and/or MCD boundaries coincide, the map shows the boundary symbol for only the highest-ranking of these boundaries.
 Geographic area names are followed by either their FIPS or census code.

1 MCD boundaries are shown in the following states in which some or all MCDs function as general-purpose governmental units: Connecticut, Illinois, Indiana, Kansas, Maine, Massachusetts, Michigan, Minnesota, Missouri, Nebraska, New Hampshire, New Jersey, New York, North Dakota, Ohio, Pennsylvania, Rhode Island, South Dakota, Vermont, and Wisconsin. (Note that Illinois and Nebraska have some counties covered by nongovernmental precincts and Missouri has most counties covered by nongovernmental townships.)

2 A " " following an MCD name denotes a false MCD. A " " following a place name indicates that a false MCD exists with the same name and FIPS code as the place; the false MCD label is not shown.

3 Place label color corresponds to the place fill color.

4 A " " following a label indicates that the school district is in more than one county.

Due to space limitations, some areas and features such as water bodies, parks, and roads may not be labeled.

OFF-RESERVATION TRUST LAND NAMES

12130 - Maricopa (AZ Chin
 14708 - Yavapai-Apache Nation

SUBJECT AREA SCHOOL DISTRICTS ON MAP SHEET

TYPE	CODE	NAME
ELM	0004	Clark-Jerome Elementary District
ELM	01080	Beaver Creek Elementary District
ELM	01650	Canon Elementary District
ELM	02220	Cottonwood Elementary District
ELM	03370	Cottonwood Oak Creek Elementary District
ELM	04600	Crown King Elementary District
ELM	04170	Kirkland Elementary District
ELM	05510	Pine Strawberry Elementary District
ELM	07770	Shall Valley Elementary District
ELM	08460	Hillside Elementary District
ELM	09030	Walnut Grove Elementary District
ELM	09360	Williamson Valley Elementary School District
ELM	09510	Yarnell Elementary District
SEC	05070	Mingus Union High School District
UNI	00003	Chino Valley Unified District
UNI	01000	Bagdad Unified School District
UNI	01600	Camp Verde Unified District
UNI	03870	Humboldt Unified District
UNI	04820	Mayer Unified District
UNI	06730	Prescott Unified District
UNI	09190	Wickenburg Unified District

Key to Adjacent Sheets		Sheet Location within Entry	
1	2		

All legal boundaries and names are as of January 1, 2020. The boundaries shown on this map are for Census Bureau statistical data collection and tabulation purposes only; their depiction and designation for statistical purposes does not constitute a determination of jurisdictional authority or rights of ownership or entitlement.

Geographic: Vintage: 2020 Census (reference date: January 1, 2020)
 Data Source: U.S. Census Bureau's MA/TIGER database (TIGER20)
 Map Created by Geography Division: December 22, 2020

U.S. DEPARTMENT OF COMMERCE U.S. Census Bureau

Projection: Albers Equal Area Conic
 Datum: NAD83
 Spheroid: GRS 80
 1st Standard Parallel: 32 16 37
 2nd Standard Parallel: 36 03 21
 Central Meridian: -111 55 48
 Latitude of Projection's Origin: 31 19 56
 False Easting: 0
 False Northing: 0

The plotted map scale is 1:250,000

United States
Census 2020

NAME: Yavapai County (025)
 ENTITY TYPE: County or statistically equivalent entity
 ST: Arizona (04)

2020 CENSUS 50 REF MAP (PARENT)
 Sheet ID: 25194025P02