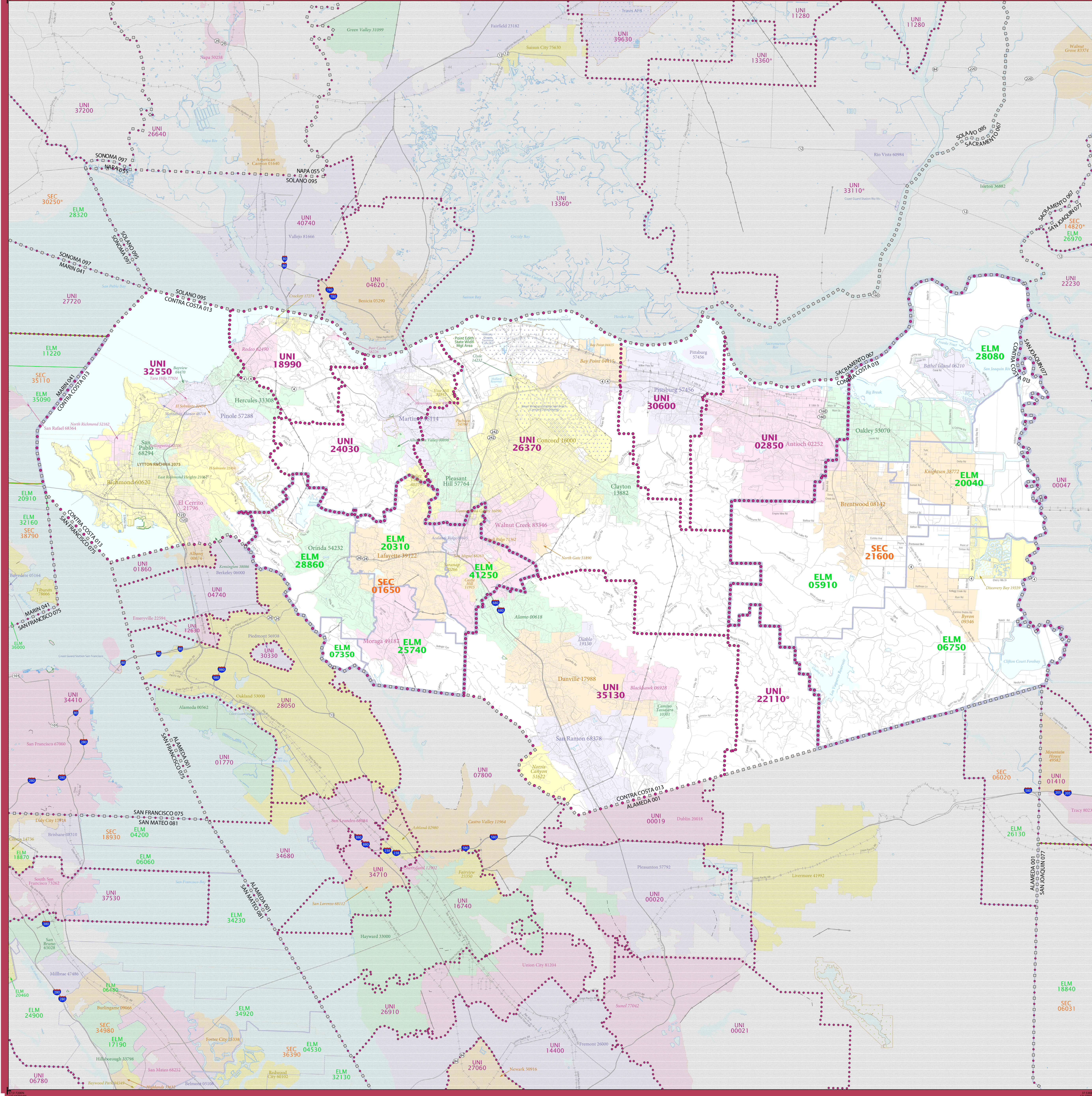


2020 CENSUS - SCHOOL DISTRICT REFERENCE MAP: Contra Costa County, CA



LEGEND

SYMBOL DESCRIPTION	SYMBOL	LABEL STYLE
International	☆☆☆☆☆	CANADA
Federal American Indian Reservation	[Dotted pattern]	L'ANSE RES 1880
Off-Reservation Trust Land	[Dotted pattern]	T1880
State American Indian Reservation	[Dotted pattern]	Tama Res 9400
Alaska Native Regional Corporation	+++++	NANA ANRC 52120
State (or statistically equivalent entity)		NEW YORK 36
County (or statistically equivalent entity)	□□□□	ERIE 029
Minor Civil Division (MCD) ^{1,2}	○	Bristol town 07485
Consolidated City	○	MILFORD 47500
Incorporated Place ³	[Color swatch]	Davis 18100
Census Designated Place (CDP) ²	[Color swatch]	Incline Village 35100
Unified School District ⁴	[Purple outline]	UNI 0330
Secondary School District ⁴	[Orange outline]	SEC 9965
Elementary School District ⁴	[Green outline]	ELM 0220

DESCRIPTION	SYMBOL	DESCRIPTION	SYMBOL
Interstate	[Blue line with shield]	Water Body	[Blue area]
U.S. Highway	[Blue line with shield]	Military	[Blue line with shield]
State Highway or State Road	[Blue line with shield]	National or State Park, Forest, or Recreation Area	[Green area]
Other Road	[Grey line]	Yosemite NP	[Green area]
AWD Trail, Steamer, Alley, Walkway, or Ferry	[Thin grey line]	Inset Area	[Green area]
Railroad	[Black line with cross-ticks]	Outside Subject Area	[Grey area]
Pipeline or Power Line	[Black line with cross-ticks]		
Ridge or Fence	[Dashed line]		
Notable Boundary or Feature Not Elsewhere Classified	[Dotted line]		

Where international, state, county, and/or MCD boundaries coincide, the map shows the boundary symbol for only the highest-ranking of these boundaries.
 Geographic area names are followed by either their FIPS or census code.

1 MCD boundaries are shown in the following states in which some or all MCDs function as general-purpose governmental units: Connecticut, Illinois, Indiana, Kansas, Maine, Massachusetts, Michigan, Minnesota, Missouri, Nebraska, New Hampshire, New Jersey, New York, North Dakota, Ohio, Pennsylvania, Rhode Island, South Dakota, Vermont, and Wisconsin. (Note that Illinois and Nebraska have some counties covered by nongovernmental precincts and Missouri has most counties covered by nongovernmental townships.)

2 A " " following an MCD name denotes a false MCD. A " " following a place name indicates that a false MCD exists with the same name and FIPS code as the place; the false MCD label is not shown.

3 Place label color corresponds to the place fill color.

4 A " " following a label indicates that the school district is in more than one county.

Due to space limitations, some areas and features such as water bodies, parks, and roads may not be labeled.

SUBJECT AREA SCHOOL DISTRICTS ON MAP SHEET

TYPE	CODE	NAME
ELM	02910	Brentwood Union Elementary School District
ELM	06750	Byron Union Elementary School District
ELM	07250	Canyon Elementary School District
ELM	20040	Knightsen Elementary School District
ELM	20310	Lafayette Elementary School District
ELM	25740	Moraga Elementary School District
ELM	28860	Oakley Union Elementary School District
ELM	28860	Orinda Union Elementary School District
ELM	41250	Walnut Creek Elementary School District
SEC	01650	Acalanes Union High School District
SEC	21600	Liberty Union High School District
SEC	02850	Antioch Unified School District
UNI	18990	John Sewart Unified School District
UNI	22110	Livermore Valley Joint Unified School District
UNI	24630	Marine Union High School District
UNI	26370	Mount Diablo Unified School District
UNI	30600	Pittsburg Unified School District
UNI	32550	West Contra Costa Unified School District
UNI	35130	San Ramon Valley Unified School District

All legal boundaries and names are as of January 1, 2020. The boundaries shown on this map are for Census Bureau statistical data collection and tabulation purposes only; their depiction and designation for statistical purposes does not constitute a determination of jurisdictional authority or rights of ownership or entitlement.

Geographic Vintage: 2020 Census (reference date: January 1, 2020)
 Data Source: U.S. Census Bureau's MA/TIGER database (TIGER20)
 Map Created by Geography Division: December 18, 2020

U.S. DEPARTMENT OF COMMERCE U.S. Census Bureau

Projection: Albers Equal Area Conic
 Datum: NAD 83
 Spheroid: GRS 80
 1st Standard Parallel: 34 06 27
 2nd Standard Parallel: 40 25 20
 Central Meridian: -119 18 20
 Latitude of Projection's Origin: 32 31 43
 False Easting: 0
 False Northing: 0

