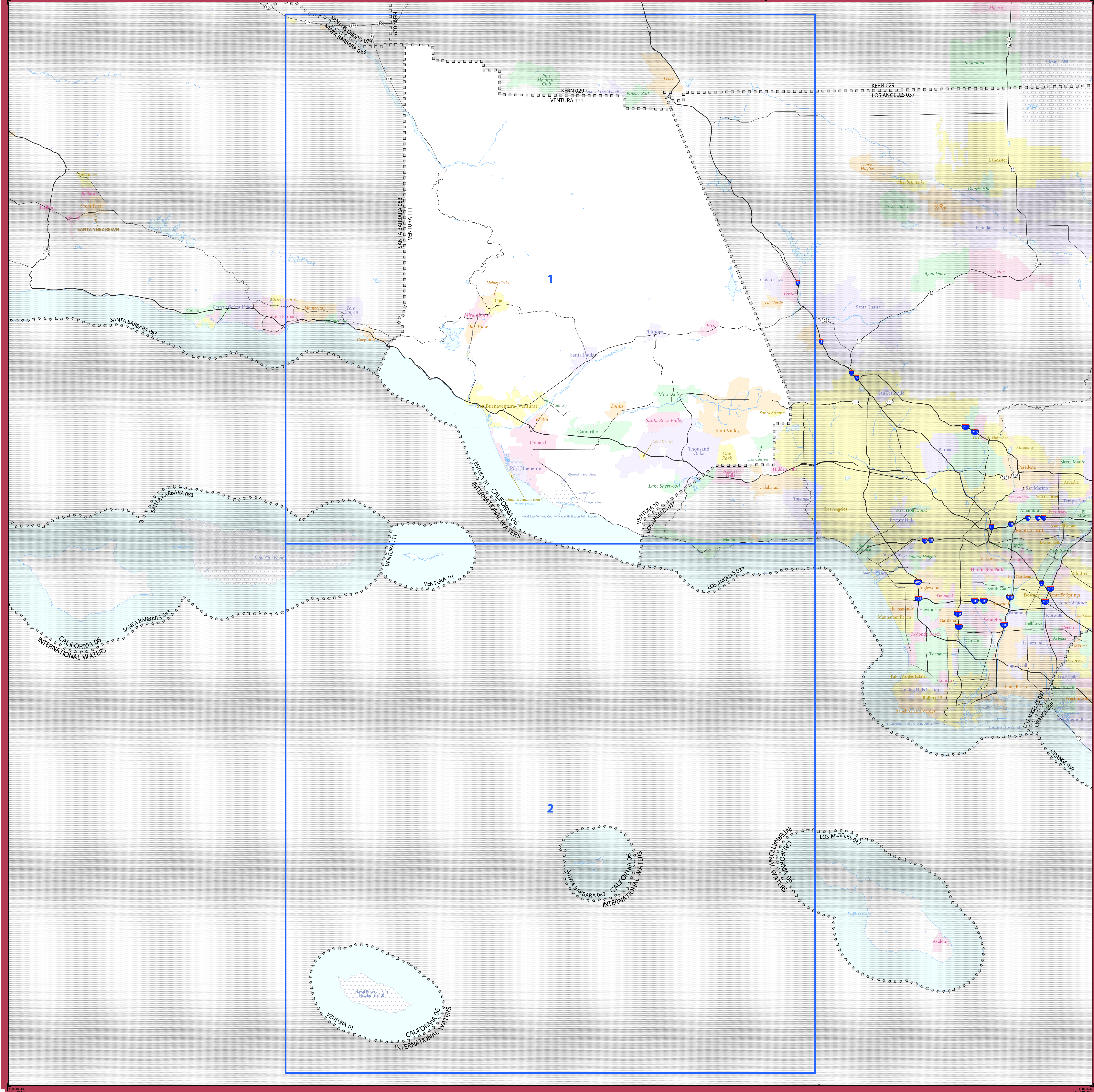


2020 CENSUS - SCHOOL DISTRICT REFERENCE MAP: Ventura County, CA



LEGEND

SYMBOL DESCRIPTION	SYMBOL	LABEL STYLE
International	☆☆☆☆☆	CANADA
Federal American Indian Reservation	[Dotted Pattern]	L'ANSE RES 1880
Off-Reservation Trust Land	[Dotted Pattern]	T1880
State American Indian Reservation	[Dotted Pattern]	Tama Res 9400
Alaska Native Regional Corporation	+++++	NANA ANRC 52120
State (or statistically equivalent entity)		NEW YORK 36
County (or statistically equivalent entity)	□□□□□	ERIE 029
Minor Civil Division (MCD) ^{1,2}	○○○○○	Bristol town 07485
Consolidated City	○●○○○	MILFORD 47500
Incorporated Place ^{3,4}	[Color Swatch]	Davis 18100
Census Designated Place (CDP) ⁵	[Color Swatch]	Incline Village 35100
Unified School District ⁴	[Color Swatch]	UNI 03370
Secondary School District ⁴	[Color Swatch]	SEC 99965
Elementary School District ⁴	[Color Swatch]	ELM 02220

DESCRIPTION	SYMBOL	DESCRIPTION	SYMBOL
Interstate	[Blue Line]	Water Body	[Blue Swatch]
U.S. Highway	[Black Line]	Military	[Blue Swatch]
State Highway or State Road	[Black Line]	National or State Park, Forest, or Recreation Area	[Green Swatch]
Other Road	[Black Line]	Yosemite NP	[Green Swatch]
RWD Trail, Stairway, Alley, Walkway, or Ferry	[Dashed Line]	Inset Area	[Green Swatch]
Railroad	[Black Line]	Outside Subject Area	[Grey Swatch]
Pipeline or Power Line	[Black Line]		
Ridge or Fence	[Dashed Line]		
Nonvisible Boundary or Feature Not Elsewhere Classified	[Dotted Line]		

Where international, state, county, and/or MCD boundaries coincide, the map shows the boundary symbol for only the highest-ranking of these boundaries.

Geographic area names are followed by either their FIPS or census code.

1 MCD boundaries are shown in the following states in which some or all MCDs function as general-purpose governmental units: Connecticut, Illinois, Indiana, Kansas, Maine, Massachusetts, Michigan, Minnesota, Missouri, Nebraska, New Hampshire, New Jersey, New York, North Dakota, Ohio, Pennsylvania, Rhode Island, South Dakota, Vermont, and Wisconsin. (Note that Illinois and Nebraska have some counties covered by nongovernmental precincts and Missouri has most counties covered by nongovernmental townships.)

2 A " " following an MCD name denotes a false MCD. A " " following a place name indicates that a false MCD exists with the same name and FIPS code as the place; the false MCD label is not shown.

3 Place label color corresponds to the place fill color.

4 A " " following a label indicates that the school district is in more than one county.

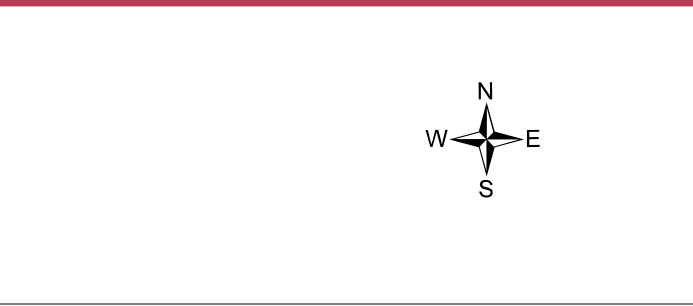
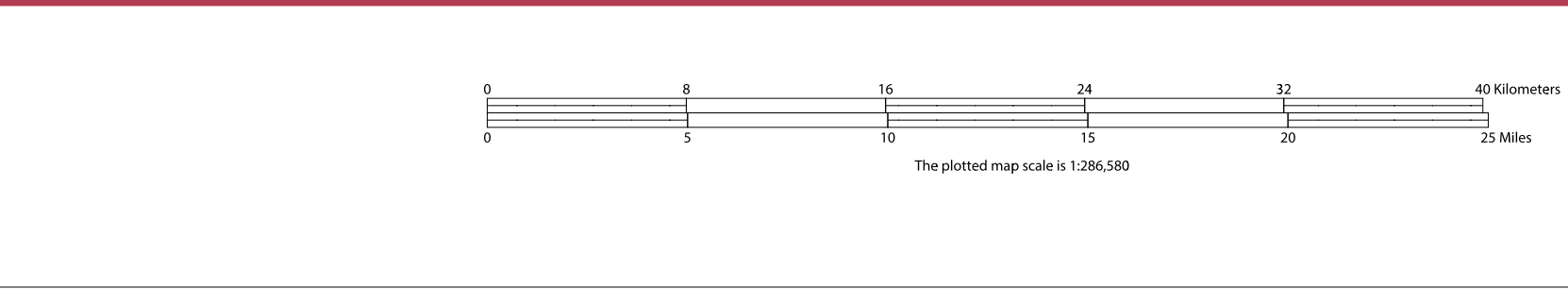
Due to space limitations, some areas and features such as water bodies, parks, and roads may not be labeled.

Note: This index map sheet provides the map sheet configuration in relation to the subject entity. Due to scale limitations, map content may be simplified. Refer to parent and/or inset map sheets for detailed map content.

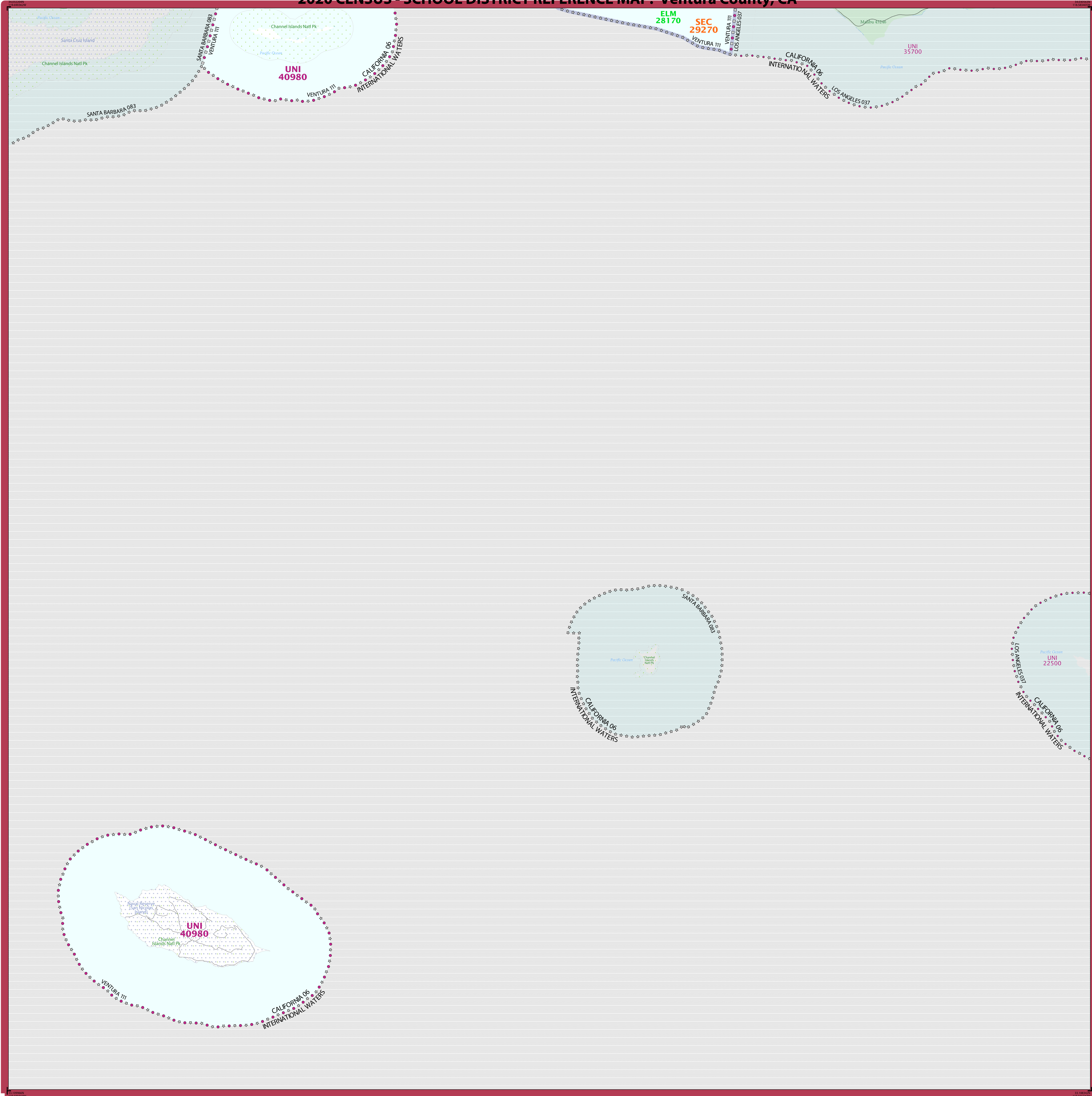
All legal boundaries and names are as of January 1, 2020. The boundaries shown on this map are for Census Bureau statistical data collection and tabulation purposes only; their depiction and designation for statistical purposes does not constitute a determination of jurisdictional authority or rights of ownership or entitlement.

Geographic: Vintage: 2020 Census (reference date: January 1, 2020)
 Data Source: U.S. Census Bureau's MA7/TIGER database (TAB20)
 Map Created by Geography Division: December 18, 2020

Projection: Albers Equal Area Conic
 Datum: NAD 83
 Spheroid: GRS 80
 1st Standard Parallel: 34 06 27
 2nd Standard Parallel: 40 25 20
 Central Meridian: -119 18 20
 Latitude of Projection's Origin: 32 31 43
 False Easting: 0
 False Northing: 0



2020 CENSUS - SCHOOL DISTRICT REFERENCE MAP: Ventura County, CA



LEGEND

SYMBOL DESCRIPTION	SYMBOL	LABEL STYLE
International	☆☆☆☆	CANADA
Federal American Indian Reservation	L'ANSE RES 1880
Off-Reservation Trust Land	T1880
State American Indian Reservation	Tama Res 9400
Alaska Native Regional Corporation	+++++	NANA ANRC 52120
State (or statistically equivalent entity)		NEW YORK 36
County (or statistically equivalent entity)	□□□□	ERIE 029
Minor Civil Division (MCD) ^{1,2}	○○○○	Bristol town 07485
Consolidated City	○○○○○	MILFORD 47500
Incorporated Place ^{3,3}	■■■■■	Davis 18100
Census Designated Place (CDP) ³	■■■■■	Incline Village 35100
Unified School District ⁴	UNI 03370 SEC 99965 ELM 02220
Secondary School District ⁴	
Elementary School District ⁴	

DESCRIPTION	SYMBOL	DESCRIPTION	SYMBOL
Interstate	—[2]—	Water Body	Pleasant Lake
U.S. Highway	—[2]—	Military	Port Belvoir
State Highway or State Road	—[2]—	National or State Park, Forest, or Recreation Area	Yosemite NP
Other Road	—[2]—	Inset Area	A1
4WD Trail, Stairway, Alley, Walkway, or Ferry	—[2]—	Outside Subject Area	
Railroad	—[2]—		
Pipeline or Power Line	—[2]—		
Ridge or Fence	—[2]—		
Nonvisible Boundary or Feature Not Elsewhere Classified	—[2]—		

Where international, state, county, and/or MCD boundaries coincide, the map shows the boundary symbol for only the highest-ranking of these boundaries.

Geographic area names are followed by either their FIPS or census code.

1 MCD boundaries are shown in the following states in which some or all MCDs function as general-purpose governmental units: Connecticut, Illinois, Indiana, Kansas, Maine, Massachusetts, Michigan, Minnesota, Missouri, Nebraska, New Hampshire, New Jersey, New York, North Dakota, Ohio, Pennsylvania, Rhode Island, South Dakota, Vermont, and Wisconsin. (Note that Illinois and Nebraska have some counties covered by nongovernmental precincts and Missouri has most counties covered by nongovernmental townships.)

2 A " " following an MCD name denotes a false MCD. A " " following a place name indicates that a false MCD exists with the same name and FIPS code as the place; the false MCD label is not shown.

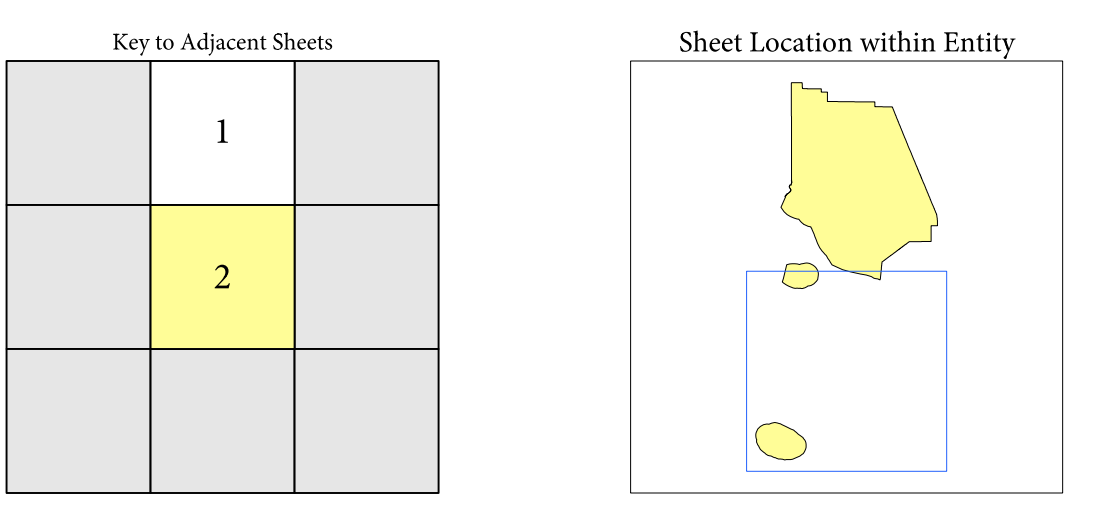
3 Place label color corresponds to the place fill color.

4 A " " following a label indicates that the school district is in more than one county.

Due to space limitations, some areas and features such as water bodies, parks, and roads may not be labeled.

SUBJECT AREA SCHOOL DISTRICTS ON MAP SHEET

TYPE	CODE	NAME
ELM	28170	Ocotuit View Elementary School District
SEC	29270	Ormand Union High School District
UNI	40980	Ventura Unified School District

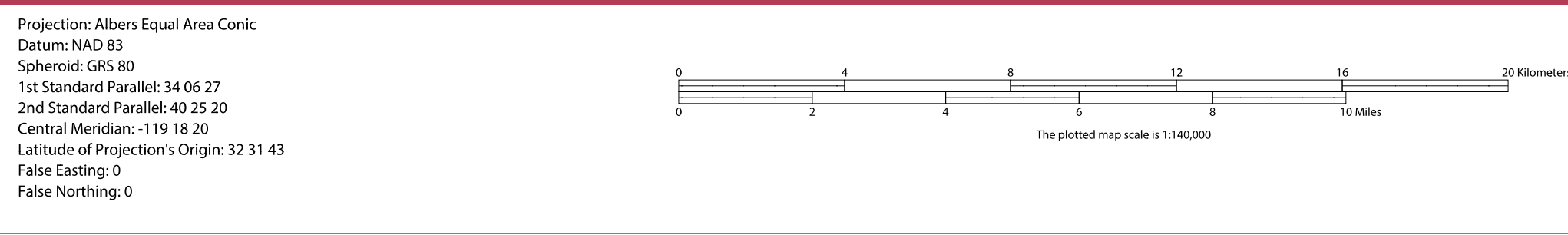


Sheet 2 of 2 PARENT sheets
Total Sheets: 3 (Index 1; Parent 2; Inset 0)

All legal boundaries and names are as of January 1, 2020. The boundaries shown on this map are for Census Bureau statistical data collection and tabulation purposes only; their depiction and designation for statistical purposes does not constitute a determination of jurisdictional authority or rights of ownership or entitlement.

Geographic Vintage: 2020 Census (reference date: January 1, 2020)
Data Source: U.S. Census Bureau's MAINTIGR database (TAB20)
Map Created by Geography Division: December 18, 2020

U.S. DEPARTMENT OF COMMERCE U.S. Census Bureau



NAME: Ventura County (111)
ENTITY TYPE: County or statistically equivalent entity
ST: California (06)

2020 CENSUS SD REF MAP (PARENT)
Sheet ID: 25150811502