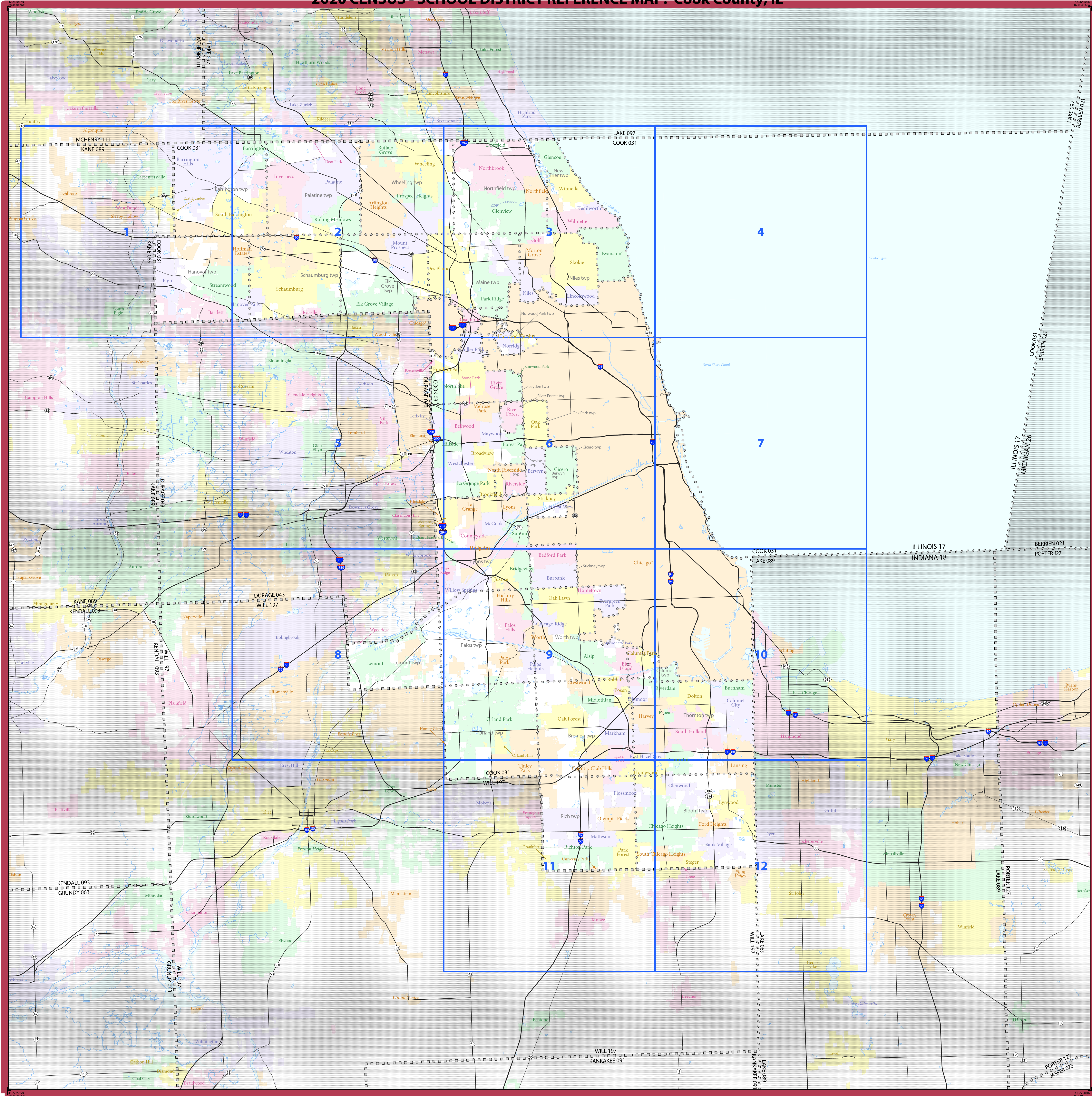


2020 CENSUS - SCHOOL DISTRICT REFERENCE MAP: Cook County, IL



LEGEND

SYMBOL DESCRIPTION	SYMBOL	LABEL STYLE
International	☆☆☆☆☆	CANADA
Federal American Indian Reservation	■■■■■■■	L'ANSE RES 1880
Off-Reservation Trust Land	■■■■■■■	T1880
State American Indian Reservation	■■■■■■■	Tama Res 9400
Alaska Native Regional Corporation	+++++	NANA ANRC 52120
State (or statistically equivalent entity)		NEW YORK 36
County (or statistically equivalent entity)	□□□□□	ERIE 029
Minor Civil Division (MCD) ^{1,2}	○ ○ ○ ○ ○	Bristol town 07485
Consolidated City	○ ○ ○ ○ ○	MILFORD 47500
Incorporated Place ³	■ ■ ■ ■ ■	Davis 18100
Census Designated Place (CDP) ²	■ ■ ■ ■ ■	Incline Village 35100
Unified School District ⁴	● ● ● ● ●	UNI 03370
Secondary School District ⁴	— — — — —	SEC 99965
Elementary School District ⁴	— — — — —	ELM 02220

DESCRIPTION	SYMBOL	DESCRIPTION	SYMBOL
Interstate	—(I)—	Water Body	■ (light blue)
U.S. Highway	—(U.S.)—	National or State Park, Forest, or Recreation Area	■ (green)
State Highway or State Road	—(S)—	Yosemite NP	■ (green)
Other Road	—	Inset Area	■ (green)
4WD Trail, Steepway, Alley, Walkway, or Ferry	—	Outside Subject Area	■ (grey)
Railroad	—+—+—+—		
Pipeline or Power Line	—+—+—		
Ridge or Fence	—+—+—		
Nonvisible Boundary or Feature Not Elsewhere Classified	—+—+—		

Where international, state, county, and/or MCD boundaries coincide, the map shows the boundary symbol for only the highest-ranking of these boundaries.
 Geographic area names are followed by either their FIPS or census code.

- MCD boundaries are shown in the following states in which some or all MCDs function as general-purpose governmental units: Connecticut, Illinois, Indiana, Kansas, Maine, Massachusetts, Michigan, Minnesota, Missouri, Nebraska, New Hampshire, New Jersey, New York, North Dakota, Ohio, Pennsylvania, Rhode Island, South Dakota, Vermont, and Wisconsin. (Note that Illinois and Nebraska have some counties covered by nongovernmental precincts and Missouri has most counties covered by nongovernmental townships.)
- A " " following an MCD name denotes a false MCD. A " " following a place name indicates that a false MCD exists with the same name and FIPS code as the place; the false MCD label is not shown.
- Place label color corresponds to the place fill color.
- A " " following a label indicates that the school district is in more than one county.

Due to space limitations, some areas and features such as water bodies, parks, and roads may not be labeled.

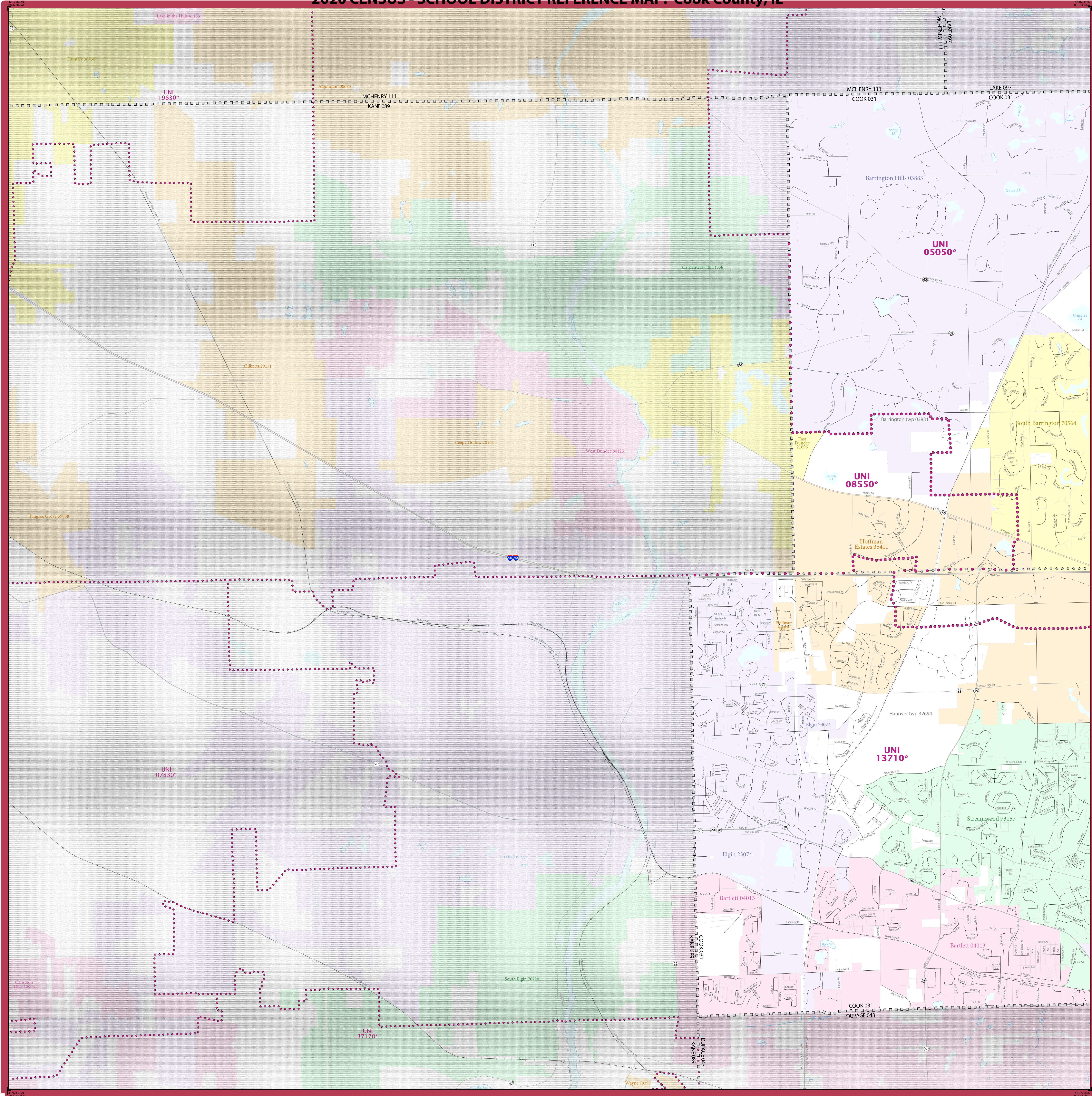
Note: This index map sheet provides the map sheet configuration in relation to the inset map entity. Due to scale limitations, map content may be simplified. Refer to parent and/or inset map sheets for detailed map content.

All legal boundaries and names are as of January 1, 2020. The boundaries shown on this map are for Census Bureau statistical data collection and tabulation purposes only; their depiction and designation for statistical purposes does not constitute a determination of jurisdictional authority or rights of ownership or entitlement.
 Geographic Vintage: 2020 Census (reference date: January 1, 2020)
 Data Source: U.S. Census Bureau's MAINTIGR database (TAB20)
 Map Created by Geography Division: January 15, 2021
 U.S. DEPARTMENT OF COMMERCE U.S. Census Bureau

Projection: Albers Equal Area Conic
 Datum: NAD 83
 Spheroid: GRS 80
 1st Standard Parallel: 37 53 35
 2nd Standard Parallel: 41 35 07
 Central Meridian: -89 18 43
 Latitude of Projection's Origin: 36 58 12
 False Easting: 0
 False Northing: 0

Total Sheets: 13 (Index 1; Parent 12; Inset 0)
 NAME: Cook County (031)
 ENTITY TYPE: County or statistically equivalent entity
 ST: Illinois (17)
 2020 CENSUS SD REF MAP (INDEX)
 Sheet ID: 251517031000

2020 CENSUS - SCHOOL DISTRICT REFERENCE MAP: Cook County, IL



LEGEND

SYMBOL DESCRIPTION	SYMBOL	LABEL STYLE
International	☆☆☆☆☆	CANADA
Federal American Indian Reservation	[Dotted Pattern]	L'ANSE RES 1880
Off-Reservation Trust Land	[Dotted Pattern]	T1880
State American Indian Reservation	[Dotted Pattern]	Tama Res 9400
Alaska Native Regional Corporation	+++++	NANA ANRC 52120
State (or statistically equivalent entity)		NEW YORK 36
County (or statistically equivalent entity)	□□□□□	ERIE 029
Minor Civil Division (MCD) ^{1,2}	○○○○○	Bristol town 07485
Consolidated City	⊙⊙⊙⊙⊙	MILFORD 47500
Incorporated Place ^{3,4}	[Color Box]	Davis 18100
Census Designated Place (CDP) ³	[Color Box]	Incline Village 55100
Unified School District ⁴	[Dotted Line]	UNI 05370
Secondary School District ⁴	[Thick Line]	SEC 99965
Elementary School District ⁴	[Thin Line]	ELM 02220

DESCRIPTION	SYMBOL	DESCRIPTION	SYMBOL
Interstate	[Blue Line]	Water Body	[Blue Area]
U.S. Highway	[Black Line]	Military	[Green Area]
State Highway or State Road	[Black Line]	National or State Park, Forest, or Recreation Area	[Green Area]
Other Road	[Thin Line]	Yosemite NP	[Green Area]
4WD Trail, Steepway, Alley, Walkway, or Ferry	[Thin Line]	Inset Area	[Green Area]
Railroad	[Black Line]	Outside Subject Area	[Grey Area]
Pipeline or Power Line	[Thin Line]		
Ridge or Fence	[Thin Line]		
Notable Boundary or Feature Not Elsewhere Classified	[Thin Line]		

Where international, state, county, and/or MCD boundaries coincide, the map shows the boundary symbol for only the highest-ranking of these boundaries.

Geographic area names are followed by either their FIPS or census code.

1 MCD boundaries are shown in the following states in which some or all MCDs function as general-purpose governmental units: Connecticut, Illinois, Indiana, Kansas, Maine, Massachusetts, Michigan, Minnesota, Missouri, Nebraska, New Hampshire, New Jersey, New York, North Dakota, Ohio, Pennsylvania, Rhode Island, South Dakota, Vermont, and Wisconsin. (Note that Illinois and Nebraska have some counties covered by nongovernmental precincts and Missouri has most counties covered by nongovernmental townships.)

2 A "*" following an MCD name denotes a false MCD. A "*" following a place name indicates that a false MCD exists with the same name and FIPS code as the place; the false MCD label is not shown.

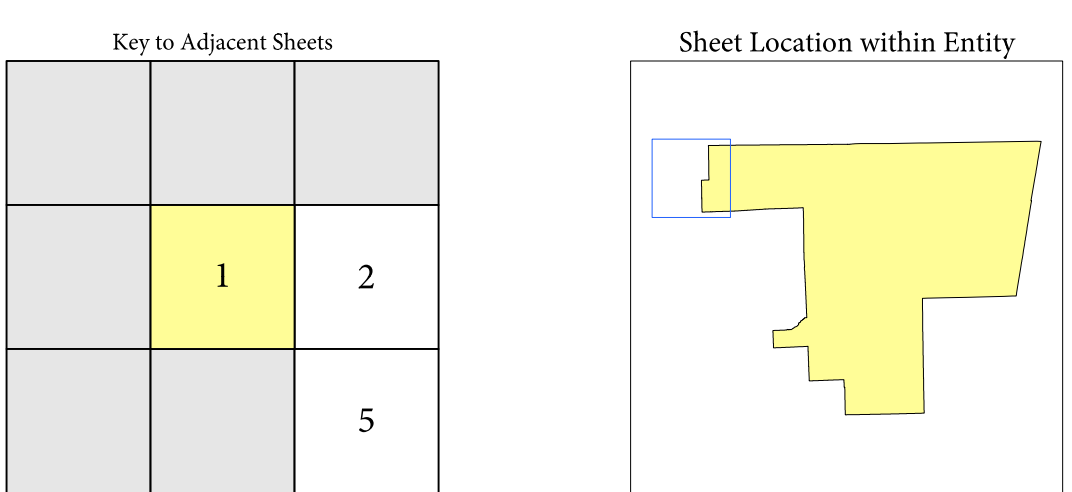
3 Place label color corresponds to the place fill color.

4 A "*" following a label indicates that the school district is in more than one county.

Due to space limitations, some areas and features such as water bodies, parks, and roads may not be labeled.

SUBJECT AREA SCHOOL DISTRICTS ON MAP SHEET

TYPE	CODE	NAME
UNI	05050	Barrington Community Unit School District 220
UNI	08550	Community Unit School District 300
UNI	13710	School District 46



Sheet 1 of 12 PARENT sheets
Total Sheets: 13 (Index 1; Parent 12; Inset 0)

All legal boundaries and names are as of January 1, 2020. The boundaries shown on this map are for Census Bureau statistical data collection and tabulation purposes only; their depiction and designation for statistical purposes does not constitute a determination of jurisdictional authority or rights of ownership or entitlement.

Geographic Vintage: 2020 Census (reference date: January 1, 2020)
Data Source: U.S. Census Bureau's MA7/TIGER database (TAB20)
Map Created by Geography Division: January 15, 2021

U.S. DEPARTMENT OF COMMERCE U.S. Census Bureau

Projection: Albers Equal Area Conic
Datum: NAD 83
Spheroid: GRS 80
1st Standard Parallel: 37 53 35
2nd Standard Parallel: 41 35 07
Central Meridian: -89 18 43
Latitude of Projection's Origin: 36 58 12
False Easting: 0
False Northing: 0

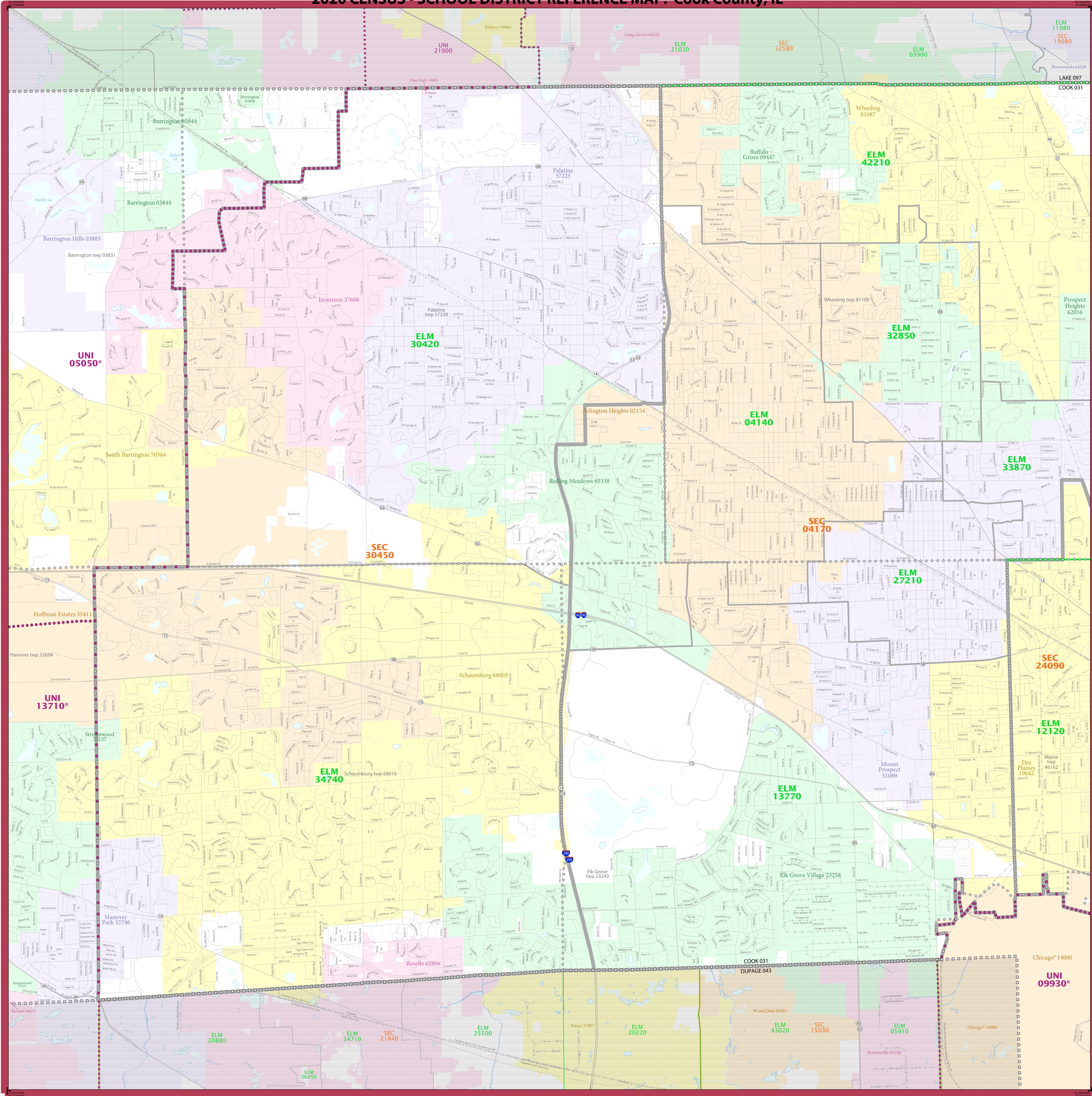
The plotted map scale is 1:300,000



NAME: Cook County (031)
ENTITY TYPE: County or statistically equivalent entity
ST: Illinois (17)

2020 CENSUS 50 REF MAP (PARENT)
Sheet ID: 251517031001

2020 CENSUS - SCHOOL DISTRICT REFERENCE MAP: Cook County, IL



LEGEND

SYMBOL DESCRIPTION	SYMBOL	LABEL STYLE
International	☆☆☆☆☆	CANADA
Federal American Indian Reservation	L'ANSE RES 1880
Off-Reservation Trust Land	T1880
State American Indian Reservation	Tama Res 9400
Alaska Native Regional Corporation	+++++	NANA ANRC 52120
State (or statistically equivalent entity)		NEW YORK 36
County (or statistically equivalent entity)	□□□□	ERIE 029
Minor Civil Division (MCD) ^{1,2}	○○○○○	Bristol town 07485
Consolidated City	○○○○○	MILFORD 47500
Incorporated Place ³	■	Davis 18100
Census Designated Place (CDP) ²	■	Inline Village 35100
Unified School District ⁴	UNI 05370
Secondary School District ⁴	SEC 99965
Elementary School District ⁴	ELM 02220

DESCRIPTION	SYMBOL	DESCRIPTION	SYMBOL
Interstate	—	Water Body	■
U.S. Highway	—	National or State Park, Forest, or Recreation Area	■
State Highway or State Road	—	Other Road	—
Other Road	—	4WD Trail, Steepway, Alley, Walkway, or Ferry	—
Railroad	—	Ridge or Fence	—
Pipeline or Power Line	—	Navigable Boundary or Feature Not Elsewhere Classified	—

Where international, state, county, and/or MCD boundaries coincide, the map shows the boundary symbol for only the highest-ranking of these boundaries.

Geographic area names are followed by either their FIPS or census code.

1 MCD boundaries are shown in the following states in which some or all MCDs function as general-purpose governmental units: Connecticut, Illinois, Indiana, Kansas, Maine, Massachusetts, Michigan, Minnesota, Missouri, Nebraska, New Hampshire, New Jersey, New York, North Dakota, Ohio, Pennsylvania, Rhode Island, South Dakota, Vermont, and Wisconsin. (Note that Illinois and Nebraska have some counties covered by nongovernmental precincts and Missouri has most counties covered by nongovernmental townships.)

2 A " " following an MCD name denotes a false MCD. A " " following a place name indicates that a false MCD exists with the same name and FIPS code as the place; the false MCD label is not shown.

3 Place label color corresponds to the place fill color.

4 A " " following a label indicates that the school district is in more than one county.

Due to space limitations, some areas and features such as water bodies, parks, and roads may not be labeled.

SUBJECT AREA SCHOOL DISTRICTS ON MAP SHEET

TYPE	CODE	NAME
ELM	04140	Arlington Heights School District 25
ELM	12120	Des Plaines Community Consolidated School District 62
ELM	13770	Community Consolidated School District 59
ELM	27210	Mount Prospect School District 57
ELM	30420	Palatine Community Consolidated School District 15
ELM	32850	Prospect Heights School District 23
ELM	33870	River Trails School District 26
ELM	34740	Schaumburg Community Consolidated School District 54
ELM	42210	Wheeling Community Consolidated School District 21
SEC	04170	Township High School District 214
SEC	24090	Maine Township High School District 207
SEC	30450	Township High School District 211
UNI	05550	Barrington Community Unit School District 220
UNI	09930	Chicago Public School District 299
UNI	13710	School District U-46

Key to Adjacent Sheets

1	2	3
	5	6

Sheet Location within Entry

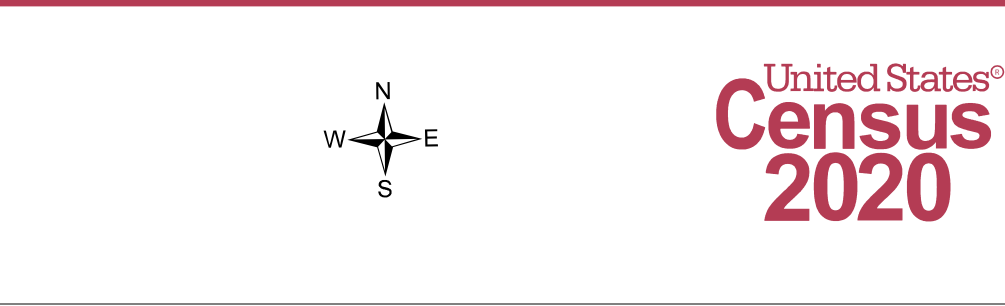
All legal boundaries and names are as of January 1, 2020. The boundaries shown on this map are for Census Bureau statistical data collection and tabulation purposes only; their depiction and designation for statistical purposes does not constitute a determination of jurisdictional authority or rights of ownership or entitlement.

Geographic Vintage: 2020 Census (reference date: January 1, 2020)
 Data Source: U.S. Census Bureau's MAI/TIGER database (TIGER20)
 Map Created by Geography Division: January 15, 2021

U.S. DEPARTMENT OF COMMERCE U.S. Census Bureau

Projection: Albers Equal Area Conic
 Datum: NAD 83
 Spheroid: GRS 80
 1st Standard Parallel: 37 53 35
 2nd Standard Parallel: 41 35 07
 Central Meridian: -89 18 43
 Latitude of Projection's Origin: 36 58 12
 False Easting: 0
 False Northing: 0

The plotted map scale is 1:30,000



NAME: Cook County (031)
 ENTRY TYPE: County or statistically equivalent entity
 ST: Illinois (17)

Sheet 2 of 12 PARENT sheets
 Total Sheets: 13 (Index 1; Parent 12; Index 0)

2020 CENSUS 50 REF MAP (PARENT)
 Sheet ID: 25151701002

2020 CENSUS - SCHOOL DISTRICT REFERENCE MAP: Cook County, IL

LEGEND

SYMBOL DESCRIPTION	SYMBOL	LABEL STYLE
International	☆☆☆☆	CANADA
Federal American Indian Reservation	L'ANSE RES 1880
Off-Reservation Trust Land	T1880
State American Indian Reservation	Tama Res 9400
Alaska Native Regional Corporation	+++++	NANA ANRC 52120
State (or statistically equivalent entity)	//////	NEW YORK 36
County (or statistically equivalent entity)	□□□□	ERIE 029
Minor Civil Division (MCD) ^{1,2}	○○○○	Bristol town 07485
Consolidated City	○○○○	MILFORD 47500
Incorporated Place ³	Davis 18100
Census Designated Place (CDP) ³	Inline Village 35100
Unified School District ⁴	UNI 05370
Secondary School District ⁴	SEC 99965
Elementary School District ⁴	ELM 02220

DESCRIPTION	SYMBOL	DESCRIPTION	SYMBOL
Interstate	—	Water Body
U.S. Highway	—	Military
State Highway or State Road	—	National or State Park, Forest, or Recreation Area
Other Road	—	Inset Area
AT&T Trail, Stream, Alley, Walkway, or Ferry	—	Inset Area
Railroad	—	Outside Subject Area
Pipeline or Power Line	—		
Ridge or Fence	—		
Navigable Boundary or Feature Not Elsewhere Classified	—		

Where international, state, county, and/or MCD boundaries coincide, the map shows the boundary symbol for only the highest-ranking of these boundaries.
Geographic area names are followed by either their FIPS or census code.

- MCD boundaries are shown in the following states in which some or all MCDs function as general-purpose governmental units: Connecticut, Illinois, Indiana, Kansas, Maine, Massachusetts, Michigan, Minnesota, Missouri, Nebraska, New Hampshire, New Jersey, New York, North Dakota, Ohio, Pennsylvania, Rhode Island, South Dakota, Vermont, and Wisconsin. (Note that Illinois and Nebraska have some counties covered by nongovernmental precincts and Missouri has most counties covered by nongovernmental townships.)
 - A " " following an MCD name denotes a false MCD. A " " following a place name indicates that a false MCD exists with the same name and FIPS code as the place; the false MCD label is not shown.
 - Place label color corresponds to the place fill color.
 - A " " following a label indicates that the school district is in more than one county.
- Due to space limitations, some areas and features such as water bodies, parks, and roads may not be labeled.

TYPE	CODE	NAME
ELM	04802	Aurora School District 73
ELM	10380	Skokie School District 73.5
ELM	12120	Des Plaines Community Consolidated School District 62
ELM	13140	East Maine School District 63
ELM	13260	East Prairie School District 73
ELM	14460	Evansville Community Consolidated School District 65
ELM	14620	Skokie Township School District 72
ELM	16800	Glencoe School District 35
ELM	16920	Glencoe Community Consolidated School District 34
ELM	17850	Northbrook Elementary School District 27
ELM	20970	Kenilworth School District 38
ELM	23100	Lincolnwood School District 74
ELM	24420	Northbrook-Glenview School District 30
ELM	26820	Golf Elementary School District 67
ELM	26850	Morton Grove School District 70
ELM	28500	Niles Elementary School District 71
ELM	29650	Norridge School District 88
ELM	29880	Northbrook School District 28
ELM	30940	Park Ridge Consolidated Community School District 64
ELM	31200	Peruville School District 79
ELM	31870	River Trails School District 26
ELM	34770	Rosemont Elementary School District 78
ELM	35460	Schiller Park School District 81
ELM	36450	Skokie School District 69
ELM	38400	Sunset Ridge School District 29
ELM	39780	Lincolnwood School District 86
ELM	41700	West Northfield School District 31
ELM	42210	Wheeling Community Consolidated School District 21
ELM	42600	Wilmette School District 39
ELM	42980	Winnetka School District 36
ELM	44170	Township High School District 214
SEC	44890	Evansville Township High School District 203
SEC	22740	Loyola Community High School District 212
SEC	24000	Maine Township High School District 207
SEC	26200	New Trier Township High School District 203
SEC	28530	Niles Township Community High School District 219
SEC	29010	Northfield Township High School District 225
SEC	33720	Ridgewood Community High School District 234
UNI	09930	Chicago Public School District 299

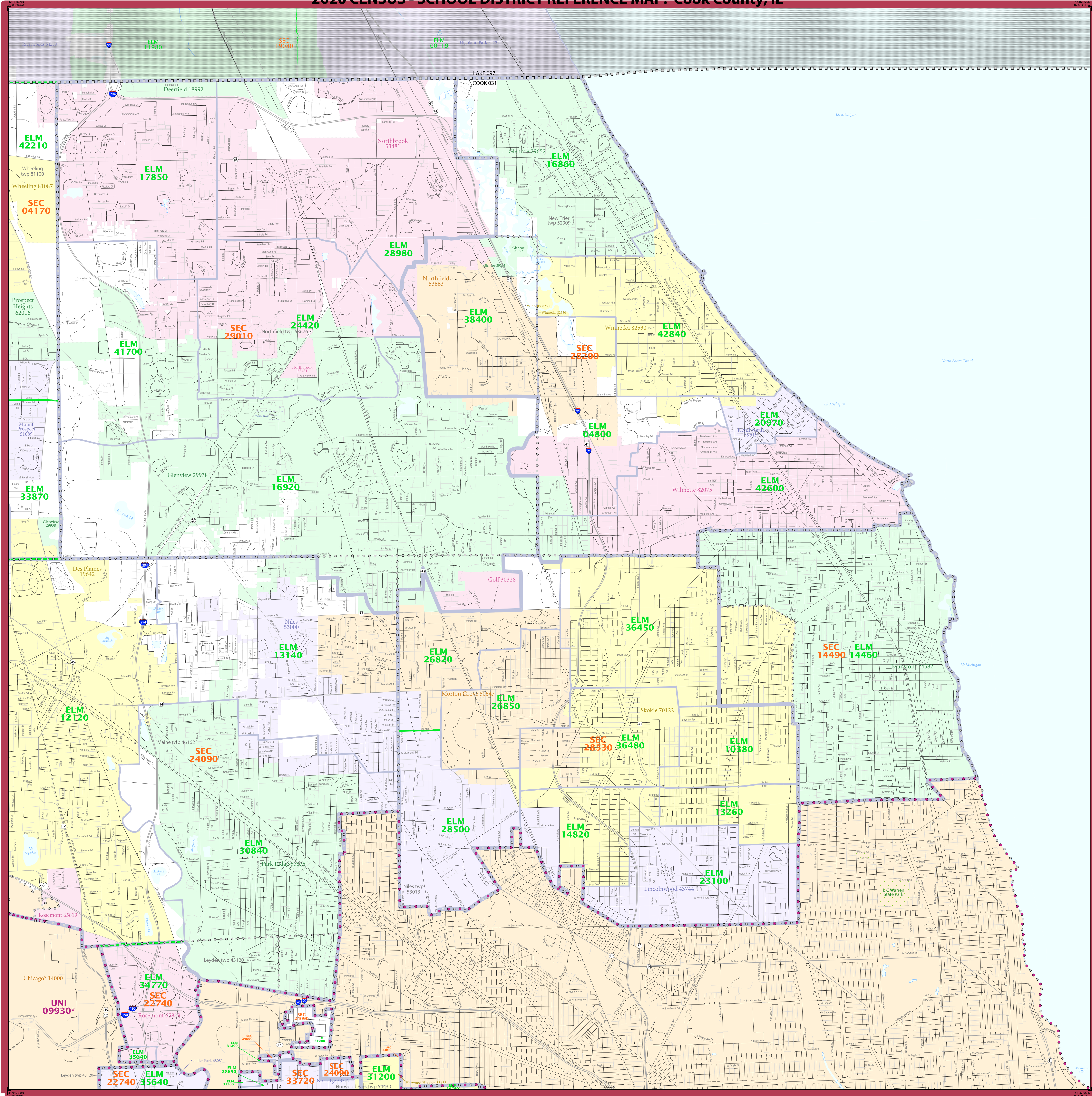
Key to Adjacent Sheets

2	3	4
5	6	7

Sheet Location within Entry

Sheet 3 of 12 PARENT sheets
Total Sheets: 13 (Index 1; Parent 12; Inset 0)

NAME: Cook County (031)
ENTRY TYPE: County or statistically equivalent entity
ST: Illinois (17)



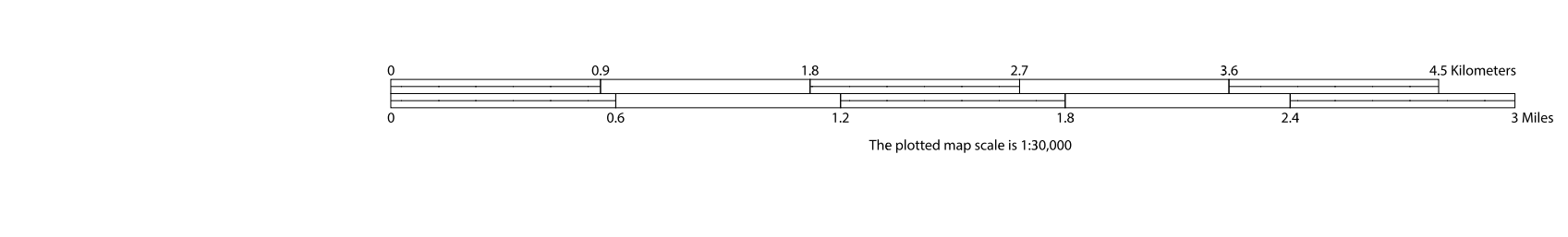
All legal boundaries and names are as of January 1, 2020. The boundaries shown on this map are for Census Bureau statistical data collection and tabulation purposes only; their depiction and designation for statistical purposes does not constitute a determination of jurisdictional authority or rights of ownership or entitlement.

Geographic: Vintage: 2020 Census (reference date: January 1, 2020)
Data Source: U.S. Census Bureau's MAINTIGIS database (TAB20)
Map Created by Geography Division: January 15, 2021

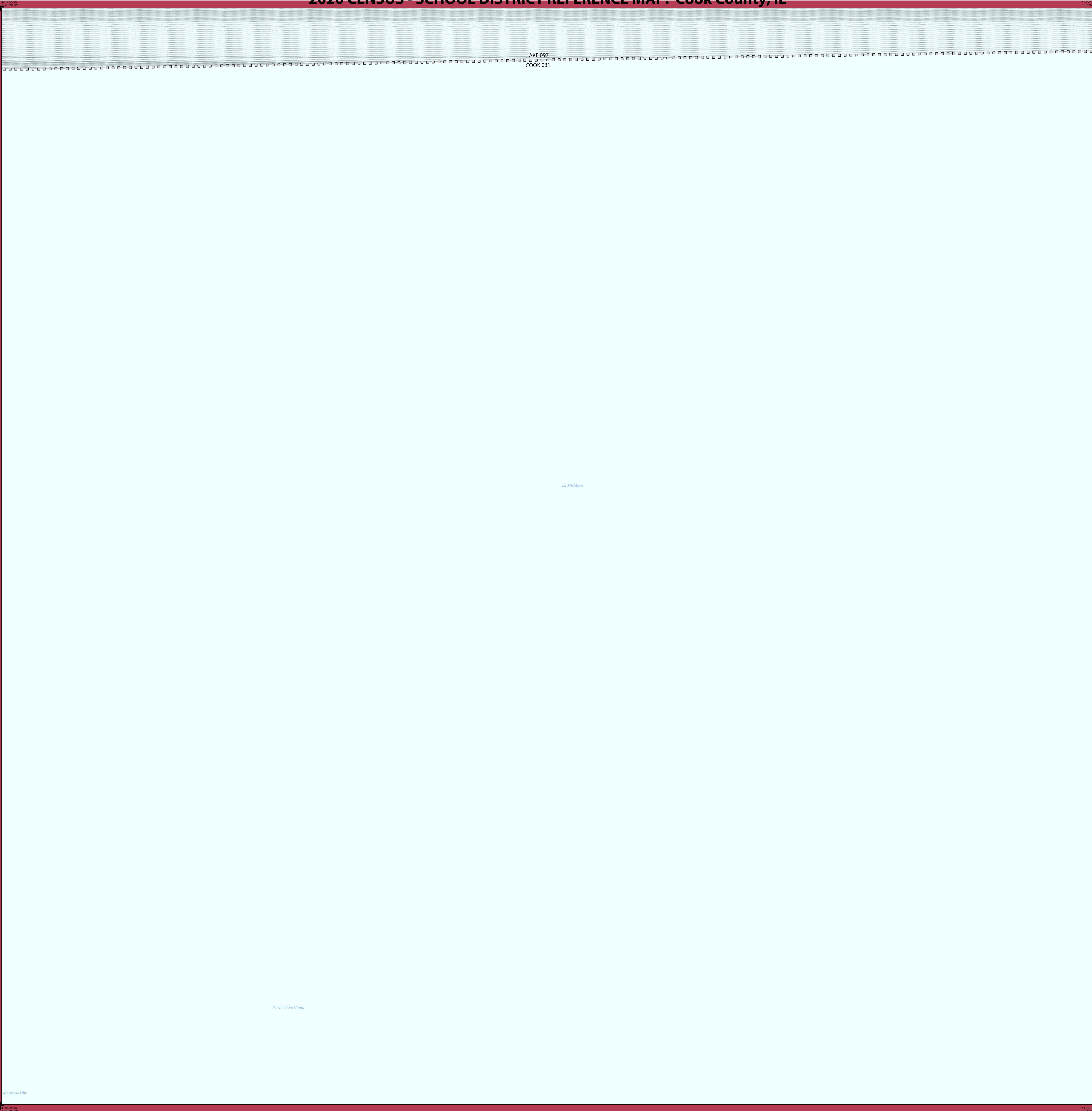
Projection: Albers Equal Area Conic
Datum: NAD 83
Spheroid: GRS 80
1st Standard Parallel: 37 53 35
2nd Standard Parallel: 41 35 07
Central Meridian: -89 18 43
Latitude of Projection's Origin: 36 58 12
False Easting: 0
False Northing: 0

United States
Census
2020

U.S. DEPARTMENT OF COMMERCE U.S. Census Bureau



2020 CENSUS - SCHOOL DISTRICT REFERENCE MAP: Cook County, IL



LEGEND

SYMBOL DESCRIPTION	SYMBOL	LABEL STYLE
International	☆☆☆☆	CANADA
Federal American Indian Reservation	L'ANSE RES 1880
Off-Reservation Trust Land	T1880
State American Indian Reservation	Tama Res 9400
Alaska Native Regional Corporation	++++	NANA ANRC 52120
State (or statistically equivalent entity)	////	NEW YORK 36
County (or statistically equivalent entity)	□□□□	ERIE 029
Minor Civil Division (MCD) ^{1,2}	○○○○	Bristol town 07485
Consolidated City	○○○○	MILFORD 47500
Incorporated Place ^{3,3}	■■■■	Davis 18100
Census Designated Place (CDP) ²	■■■■	Inline Village 35100
Unified School District ⁴	●●●●	UNI 03370
Secondary School District ⁴	■■■■	SEC 99965
Elementary School District ⁴	■■■■	ELM 02220

DESCRIPTION	SYMBOL	DESCRIPTION	SYMBOL
Interstate	— — —	Water Body	Pleasant Lake
U.S. Highway	— — —	Military	Port Belvoir
State Highway or State Road	— — —	National or State Park, Forest, or Recreation Area	Yosemite NP
Other Road	— — —	Inset Area	A1
4WD Trail, Stateway, Alley, Walkway, or Ferry	— — —	Outside Subject Area	
Railroad	— — —		
Pipeline or Power Line	— — —		
Ridge or Fence	— — —		
Nonvisible Boundary or Feature Not Elsewhere Classified	— — —		

Where international, state, county, and/or MCD boundaries coincide, the map shows the boundary symbol for only the highest-ranking of these boundaries.

Geographic area names are followed by either their FIPS or census code.

1 MCD boundaries are shown in the following states in which some or all MCDs function as general-purpose governmental units: Connecticut, Illinois, Indiana, Kansas, Maine, Massachusetts, Michigan, Minnesota, Missouri, Nebraska, New Hampshire, New Jersey, New York, North Dakota, Ohio, Pennsylvania, Rhode Island, South Dakota, Vermont, and Wisconsin. (Note that Illinois and Nebraska have some counties covered by nongovernmental precincts and Missouri has most counties covered by nongovernmental townships.)

2 A " " following an MCD name denotes a false MCD. A " " following a place name indicates that a false MCD exists with the same name and FIPS code as the place; the false MCD label is not shown.

3 Place label color corresponds to the place fill color.

4 A " " following a label indicates that the school district is in more than one county.

Due to space limitations, some areas and features such as water bodies, parks, and roads may not be labeled.

SUBJECT AREA SCHOOL DISTRICTS ON MAP SHEET

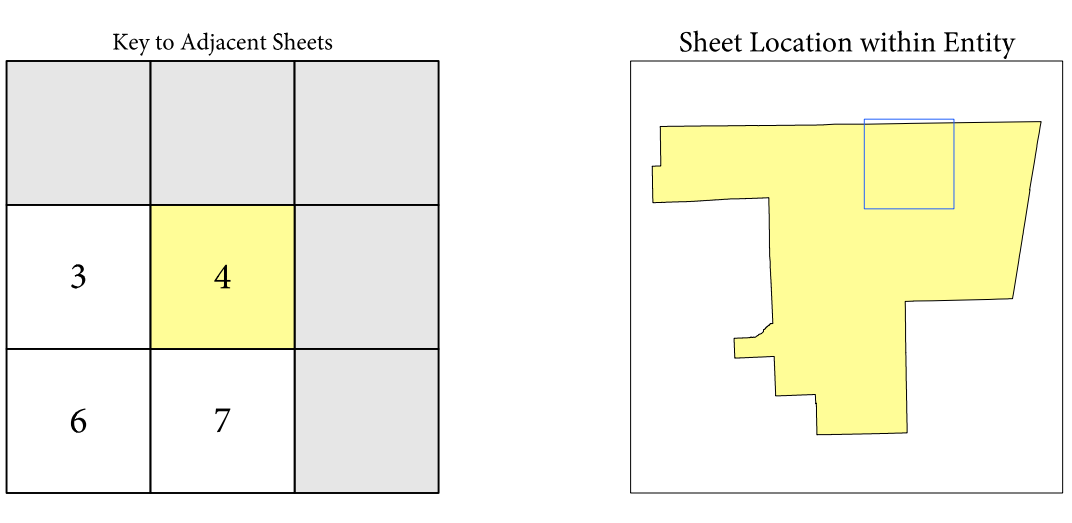
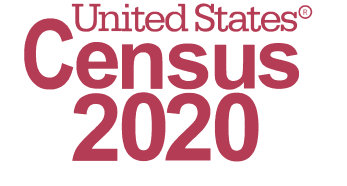
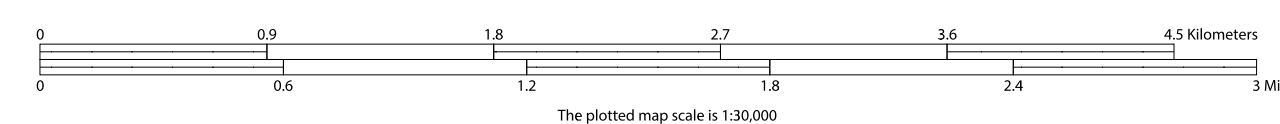
TYPE	CODE	NAME
UN	09990	Chicago Public School District 299

All legal boundaries and names are as of January 1, 2020. The boundaries shown on this map are for Census Bureau statistical data collection and tabulation purposes only; their depiction and designation for statistical purposes does not constitute a determination of jurisdictional authority or rights of ownership or entitlement.

Geographic Vintage: 2020 Census (reference date: January 1, 2020)
 Data Source: U.S. Census Bureau's MA7/TIGER database (TAB20)
 Map Created by Geography Division: January 15, 2021

U.S. DEPARTMENT OF COMMERCE U.S. Census Bureau

Projection: Albers Equal Area Conic
 Datum: NAD 83
 Spheroid: GRS 80
 1st Standard Parallel: 37 53 35
 2nd Standard Parallel: 41 35 07
 Central Meridian: -89 18 43
 Latitude of Projection's Origin: 36 58 12
 False Easting: 0
 False Northing: 0

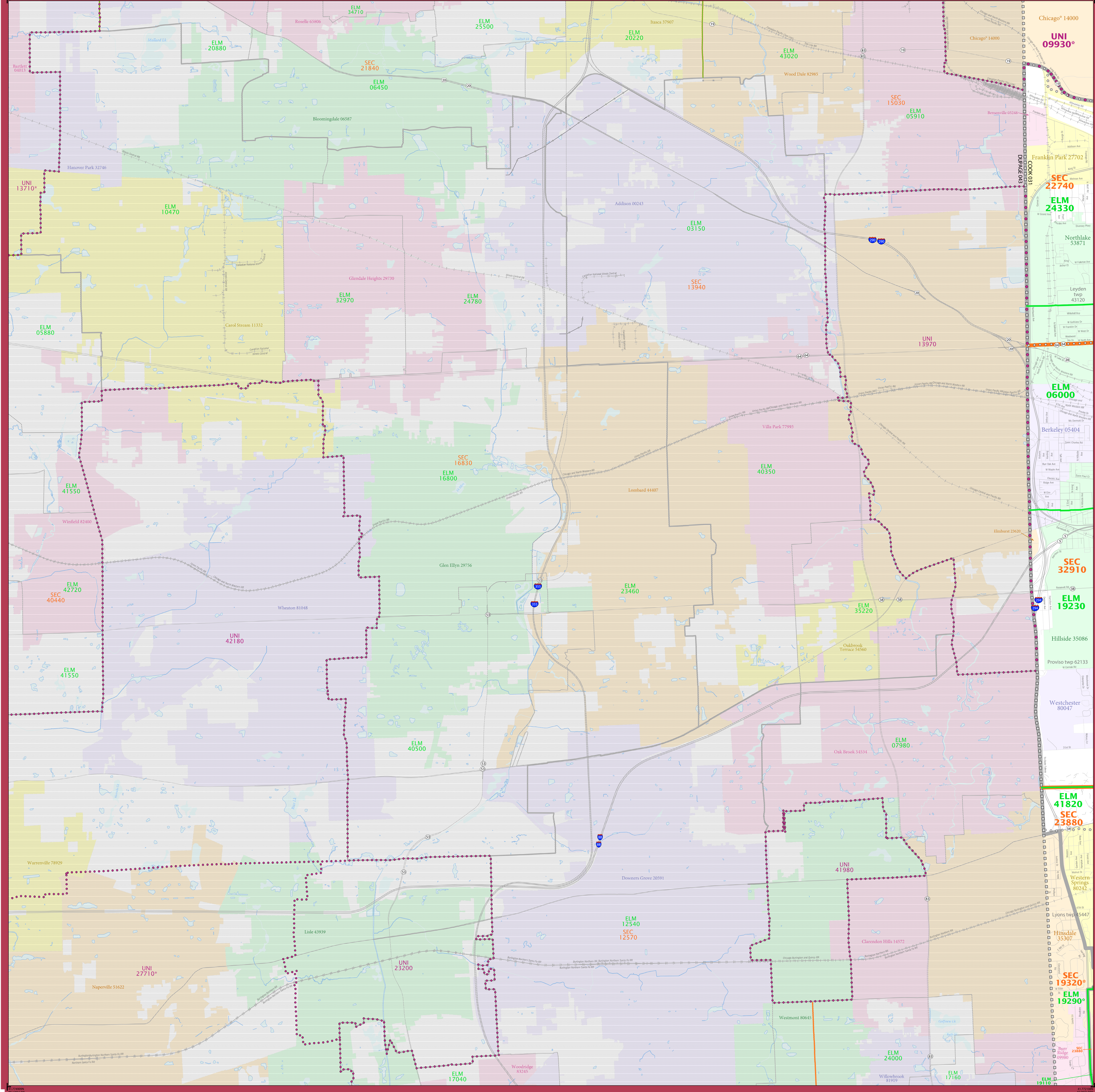


Sheet 4 of 12 PARENT sheets
 Total Sheets: 13 (Index 1; Parent 12; Inset 0)

NAME: Cook County (031)
 ENTITY TYPE: County or statistically equivalent entity
 ST: Illinois (17)

2020 CENSUS SD REF MAP (PARENT)
 Sheet ID: 25151701004

2020 CENSUS - SCHOOL DISTRICT REFERENCE MAP: Cook County, IL



LEGEND

SYMBOL DESCRIPTION	SYMBOL	LABEL STYLE
International	☆☆☆☆☆	CANADA
Federal American Indian Reservation	L'ANSE RES 1880
Off-Reservation Trust Land	T1880
State American Indian Reservation	Tama Res 9400
Alaska Native Regional Corporation	+++++	NANA ANRC 52120
State (or statistically equivalent entity)		NEW YORK 36
County (or statistically equivalent entity)	□□□□	ERIE 029
Minor Civil Division (MCD) ^{1,2}	○○○○○	Bristol town 07485
Consolidated City	○○○○○	MILFORD 47500
Incorporated Place ³	■	Davis 18100
Census Designated Place (CDP) ³	■	Inline Village 35100
Unified School District ⁴	UNI 03370
Secondary School District ⁴	SEC 99965
Elementary School District ⁴	ELM 02220

DESCRIPTION	SYMBOL	DESCRIPTION	SYMBOL
Interstate	— — —	Water Body	Blue Area
U.S. Highway	— — —	National or State Park, Forest, or Recreation Area	Green Area
State Highway or State Road	— — —	Inset Area	Green Box
Other Road	— — —	Outside Subject Area	Grey Area
4WD Trail, Footway, Alley, Walkway, or Ferry	— — —		
Railroad	— — —		
Pipeline or Power Line	— — —		
Ridge or Fence	— — —		
Non-labeled Boundary or Feature Not Elsewhere Classified		

Where international, state, county, and/or MCD boundaries coincide, the map shows the boundary symbol for only the highest-ranking of these boundaries.

Geographic area names are followed by either their FIPS or census code.

1 MCD boundaries are shown in the following states in which some or all MCDs function as general-purpose governmental units: Connecticut, Illinois, Indiana, Kansas, Maine, Massachusetts, Michigan, Minnesota, Missouri, Nebraska, New Hampshire, New Jersey, New York, North Dakota, Ohio, Pennsylvania, Rhode Island, South Dakota, Vermont, and Wisconsin. (Note that Illinois and Nebraska have some counties covered by nongovernmental precincts and Missouri has most counties covered by nongovernmental townships.)

2 A " " following an MCD name denotes a false MCD. A " " following a place name indicates that a false MCD exists with the same name and FIPS code as the place; the false MCD label is not shown.

3 Place label color corresponds to the place fill color.

4 A " " following a label indicates that the school district is in more than one county.

Due to space limitations, some areas and features such as water bodies, parks, and roads may not be labeled.

SUBJECT AREA SCHOOL DISTRICTS ON MAP SHEET

TYPE	CODE	NAME
ELM	06000	Berkley School District 87
ELM	19110	LaGrange Highlands School District 106
ELM	19230	Hillside School District 93
ELM	19290	Hinsdale Community Consolidated School District 181
ELM	24330	Manheim School District 83
ELM	41820	Western Springs School District 101
ELM	19320	Hinsdale Township High School District 86
SEC	22740	Leyden Community High School District 212
SEC	23880	Lyons Township High School District 204
SEC	32910	Proviso Township High School District 209
UNI	09930	Chicago Public School District 299

Key to Adjacent Sheets

1	2	3
	5	6
	8	9

Sheet Location within Entity

Sheet 5 of 12 PARENT sheets
Total Sheets: 13 (Index 1; Parent 12; Inset 0)

All legal boundaries and names are as of January 1, 2020. The boundaries shown on this map are for Census Bureau's statistical data collection and tabulation purposes only; their depiction and designation for statistical purposes does not constitute a determination of jurisdictional authority or rights of ownership or entitlement.

Geographic Vintage: 2020 Census (reference date: January 1, 2020)
Data Source: U.S. Census Bureau's MAINTIGIS database (TAB20)
Map Created by Geography Division: January 15, 2021

U.S. DEPARTMENT OF COMMERCE U.S. Census Bureau

Projection: Albers Equal Area Conic
Datum: NAD83
Spheroid: GRS 80
1st Standard Parallel: 37 53 35
2nd Standard Parallel: 41 35 07
Central Meridian: -89 18 43
Latitude of Projection's Origin: 36 58 12
False Easting: 0
False Northing: 0

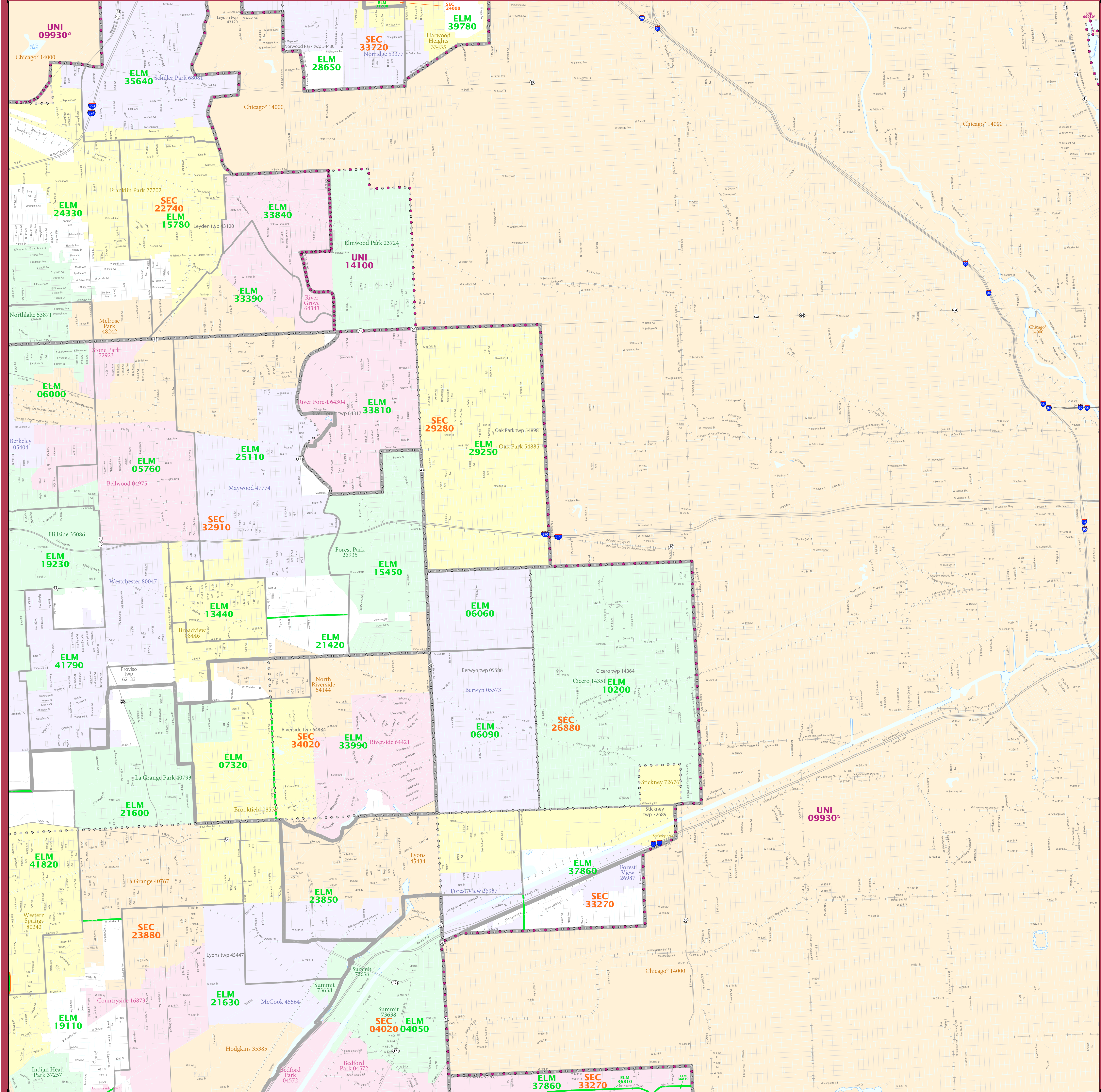
The plotted map scale is 1:30,000



NAME: Cook County (031)
ENTITY TYPE: County or statistically equivalent entity
ST: Illinois (17)

2020 CENSUS 50 REF MAP (PARENT)
Sheet ID: 25151701005

2020 CENSUS - SCHOOL DISTRICT REFERENCE MAP: Cook County, IL



LEGEND

SYMBOL DESCRIPTION	SYMBOL	SYMBOL DESCRIPTION	SYMBOL
International	☆☆☆☆	CANADA	
Federal American Indian Reservation	L'ANSE RES 1880	
Off-Reservation Trust Land	T1880	
State American Indian Reservation	Tama Res 9400	
Alaska Native Regional Corporation	+++++	NANA ANRC 52120	
State (or statistically equivalent entity)	//////	NEW YORK 36	
County (or statistically equivalent entity)	□□□□	ERIE 029	
Minor Civil Division (MCD) ^{1,2}	○ ○ ○ ○ ○	Bristol town 07485	
Consolidated City	○ ○ ○ ○ ○	MILFORD 47500	
Incorporated Place ³	■ ■ ■ ■ ■	Davis 18100	
Census Designated Place (CDP) ³	■ ■ ■ ■ ■	Inline Village 35100	
Unified School District ⁴	UNI 05370	
Secondary School District ⁴	SEC 99965	
Elementary School District ⁴	ELM 02220	

DESCRIPTION	SYMBOL	DESCRIPTION	SYMBOL
Interstate	—	Water Body	■ ■ ■ ■ ■
U.S. Highway	—	Military	■ ■ ■ ■ ■
State Highway or State Road	—	National or State Park, Forest, or Recreation Area	■ ■ ■ ■ ■
Other Road	—	Inset Area	■ ■ ■ ■ ■
Railroad	—	Outside Subject Area	■ ■ ■ ■ ■
Pipeline or Power Line	—		
Ridge or Fence	—		
Non-labeled Boundary or Feature Not Elsewhere Classified	—		

Where international, state, county, and/or MCD boundaries coincide, the map shows the boundary symbol for only the highest-ranking of these boundaries.
 Geographic area names are followed by either their FIPS or census code.

1 MCD boundaries are shown in the following states in which some or all MCDs function as general-purpose governmental units: Connecticut, Illinois, Indiana, Kansas, Maine, Massachusetts, Michigan, Minnesota, Missouri, Nebraska, New Hampshire, New Jersey, New York, North Dakota, Ohio, Pennsylvania, Rhode Island, South Dakota, Vermont, and Wisconsin. (Note that Illinois and Nebraska have some counties covered by non-governmental precincts and Missouri has most counties covered by non-governmental townships.)

2 A " " following an MCD name denotes a false MCD. A " " following a place name indicates that a false MCD exists with the same name and FIPS code as the place; the false MCD label is not shown.

3 Place label color corresponds to the place fill color.

4 A " " following a label indicates that the school district is in more than one county.

Due to space limitations, some areas and features such as water bodies, parks, and roads may not be labeled.

SUBJECT AREA SCHOOL DISTRICTS ON MAP SHEET

TYPE	CODE	NAME
ELM	04050	Sherman School District 104
ELM	05760	Bellwood School District 88
ELM	06000	Berkshire School District 87
ELM	06060	Berwyn North School District 98
ELM	06090	Berwyn South School District 100
ELM	07320	Brookfield School District 95
ELM	10200	Cicero School District 99
ELM	13440	Lindspg School District 92
ELM	14560	Forest Park School District 91
ELM	15780	Franklin Park School District 84
ELM	19110	LaGrange-Highlands School District 106
ELM	19230	Hillside School District 93
ELM	19290	LaGrange Community Consolidated School District 181
ELM	21420	Komarek School District 94
ELM	21630	LaGrange School District 102
ELM	23850	Lyons School District 103
ELM	24330	Mannheim School District 83
ELM	25110	Maywood-Mainland Park-Broadview School District 89
ELM	28650	Norridge School District 79
ELM	29250	Oak Park Elementary School District 86
ELM	31200	Pennoyer School District 97
ELM	32040	Pleasantdale School District 107
ELM	33390	Rhodes School District 84-5
ELM	33810	River Forest School District 90
ELM	33840	River Grove School District 85-5
ELM	33990	Riverside School District 111
ELM	35640	Schiller Park School District 81
ELM	36810	Stanhope School District 86
ELM	37890	Central Stickney School District 110
ELM	39780	Union Ridge School District 86
ELM	41790	Westchester School District 92-5
ELM	41820	Western Springs School District 101
SEC	04020	Argo-Community High School District 217
SEC	19520	Hinsdale Township High School District 86
SEC	22740	Leyden Community High School District 212
SEC	23880	Lyons Township High School District 204
SEC	24090	Maine Township High School District 207
SEC	26880	J. Sterling Morton High School District 201
SEC	29200	Oak Park and River Forest District 200
SEC	32910	Prevost Township High School District 209
SEC	33270	Rensselaersville High School District 229
SEC	33720	Ridgeway Community High School District 234
SEC	34020	Riverside-Broadfield Township School District 208
UNI	09930	Chicago Public School District 299
UNI	14100	Elmwood Park Community Unit School District 401

Key to Adjacent Sheets

2	3	4
5	6	7
8	9	10

Sheet Location within Entry

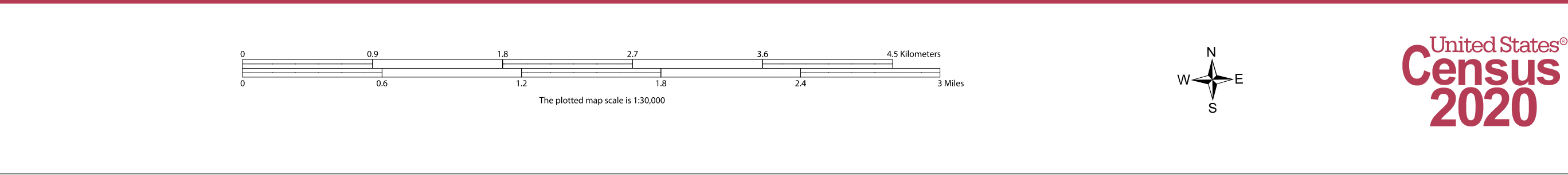
All legal boundaries and names are as of January 1, 2020. The boundaries shown on this map are for Census Bureau statistical data collection and tabulation purposes only; their depiction and designation for statistical purposes does not constitute a determination of jurisdictional authority or rights of ownership or entitlement.

Geographic Vintage: 2020 Census (reference date: January 1, 2020)
 Data Source: U.S. Census Bureau's MA7/TIGER database (14820)
 Map Created by Geography Division: January 15, 2021

U.S. DEPARTMENT OF COMMERCE U.S. Census Bureau

Projection: Albers Equal Area Conic
 Datum: NAD83
 Spheroid: GRS 80
 1st Standard Parallel: 37 53 35
 2nd Standard Parallel: 41 35 07
 Central Meridian: -89 18 43
 Latitude of Projection's Origin: 36 58 12
 False Easting: 0
 False Northing: 0

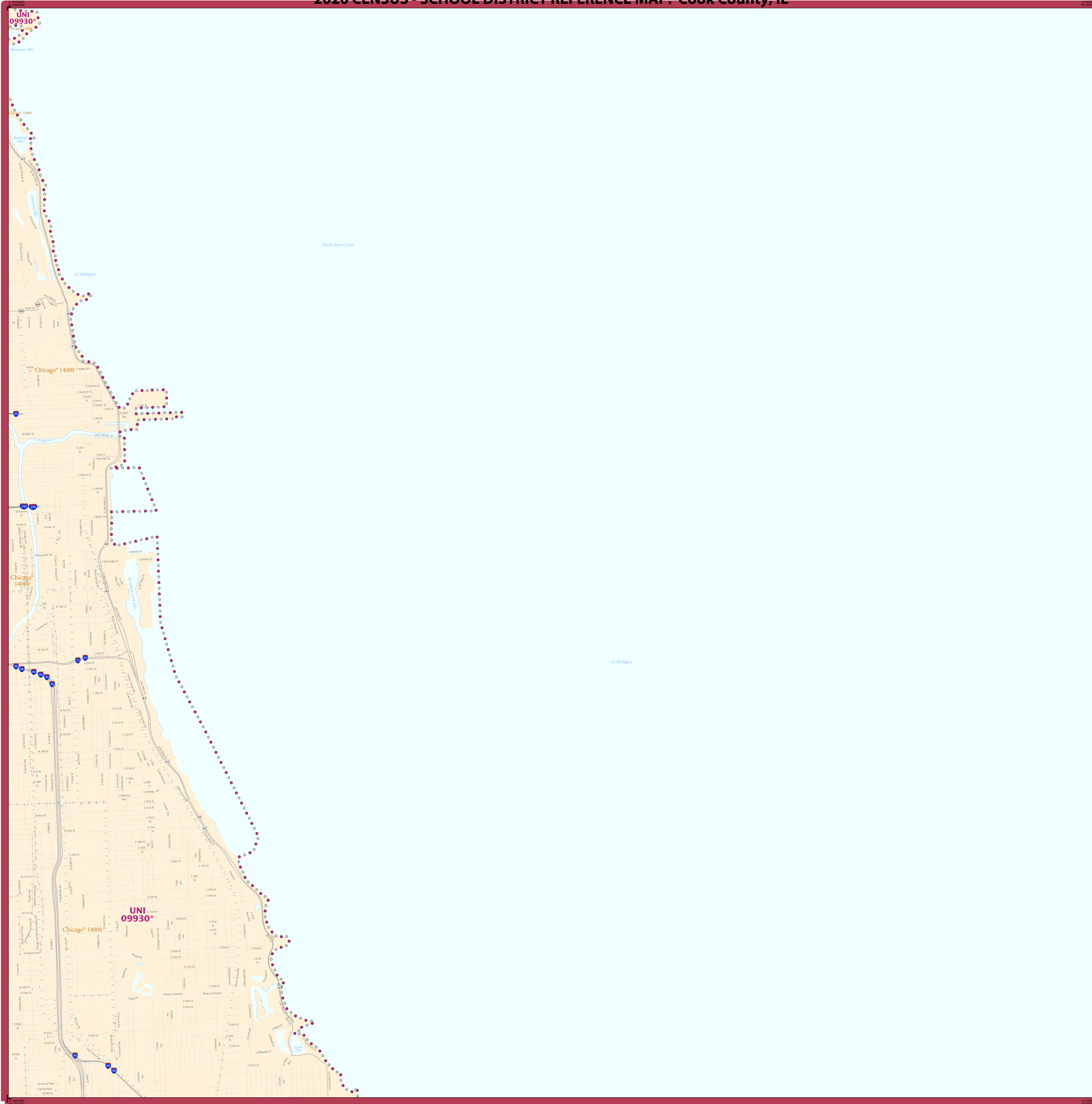
The plotted map scale is 1:300,000



NAME: Cook County (031)
 ENTRY TYPE: County or statistically equivalent entity
 ST: Illinois (17)

2020 CENSUS 50 REF MAP (PARENT)
 Sheet ID: 25151701006

2020 CENSUS - SCHOOL DISTRICT REFERENCE MAP: Cook County, IL



LEGEND

SYMBOL DESCRIPTION	SYMBOL	LABEL STYLE
International	☆☆☆☆☆	CANADA
Federal American Indian Reservation	■ ■ ■ ■ ■	L'ANSE RES 1880
Off-Reservation Trust Land	■ ■ ■ ■ ■	T1880
State American Indian Reservation	■ ■ ■ ■ ■	Tama Res 9400
Alaska Native Regional Corporation	+++++	NANA ANRC 52120
State (or statistically equivalent entity)		NEW YORK 36
County (or statistically equivalent entity)	□ □ □ □ □	ERIE 029
Minor Civil Division (MCD) ^{1,2}	○ ○ ○ ○ ○	Bristol town 07485
Consolidated City	○ ○ ○ ○ ○	MILFORD 47500
Incorporated Place ^{3,4}	■ ■ ■ ■ ■	Davis 18100
Census Designated Place (CDP) ³	■ ■ ■ ■ ■	Inline Village 35100
Unified School District ⁴	● ● ● ● ●	UNI 09930
Secondary School District ⁴	— — — — —	SEC 99965
Elementary School District ⁴	— — — — —	ELM 02220

DESCRIPTION	SYMBOL	DESCRIPTION	SYMBOL
Interstate	— 2 —	Water Body	■ Pleasant Lake
U.S. Highway	— 2 —	Military	■ Fort Belvoir
State Highway or State Road	— 2 —	National or State Park, Forest, or Recreation Area	■ Yosemite NP
Other Road	— — — — —	Inset Area	■ A1
4WD Trail, Stairway, Alley, Walkway, or Ferry	— — — — —	Outside Subject Area	■
Railroad	— + — + — + —		
Pipeline or Power Line	— + — + — + —		
Ridge or Fence	— + — + — + —		
Nonvisible Boundary or Feature Not Elsewhere Classified	— + — + — + —		

Where international, state, county, and/or MCD boundaries coincide, the map shows the boundary symbol for only the highest-ranking of these boundaries.

Geographic area names are followed by either their FIPS or census code.

1 MCD boundaries are shown in the following states in which some or all MCDs function as general-purpose governmental units: Connecticut, Illinois, Indiana, Kansas, Maine, Massachusetts, Michigan, Minnesota, Missouri, Nebraska, New Hampshire, New Jersey, New York, North Dakota, Ohio, Pennsylvania, Rhode Island, South Dakota, Vermont, and Wisconsin. (Note that Illinois and Nebraska have some counties covered by nongovernmental precincts and Missouri has most counties covered by nongovernmental townships.)

2 A " " following an MCD name denotes a false MCD. A " " following a place name indicates that a false MCD exists with the same name and FIPS code as the place; the false MCD label is not shown.

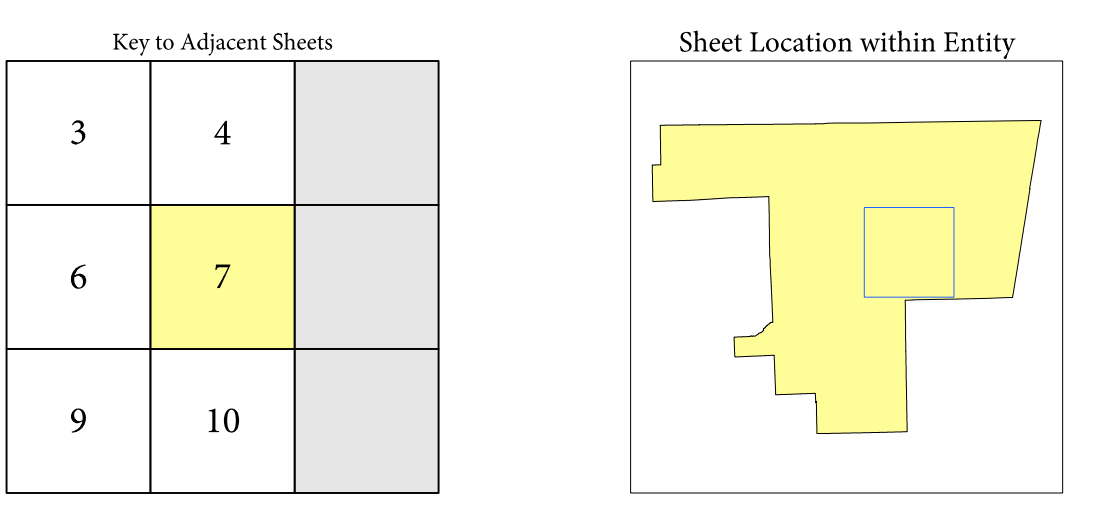
3 Place label color corresponds to the place fill color.

4 A " " following a label indicates that the school district is in more than one county.

Due to space limitations, some areas and features such as water bodies, parks, and roads may not be labeled.

SUBJECT AREA SCHOOL DISTRICTS ON MAP SHEET

TYPE	CODE	NAME
UNI	09930	Chicago Public School District 299



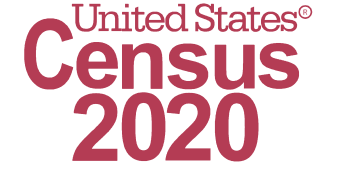
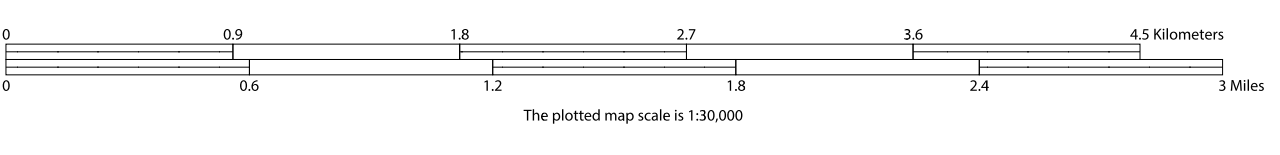
Sheet 7 of 12 PARENT sheets
Total Sheets: 13 (Index 1; Parent 12; Inset 0)

All legal boundaries and names are as of January 1, 2020. The boundaries shown on this map are for Census Bureau statistical data collection and tabulation purposes only; their depiction and designation for statistical purposes does not constitute a determination of jurisdictional authority or rights of ownership or entitlement.

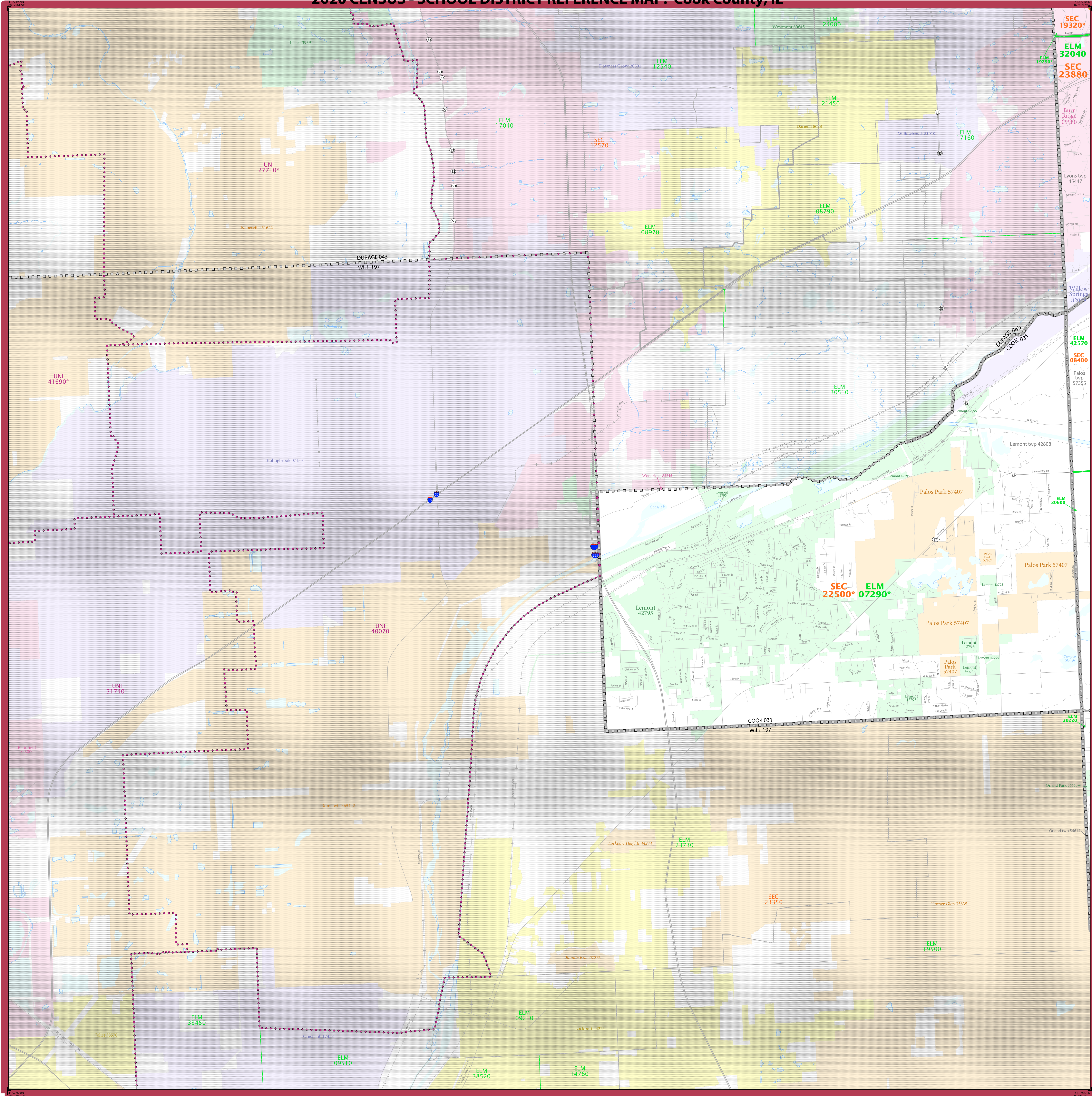
Geographic Vintage: 2020 Census (reference date: January 1, 2020)
Data Source: U.S. Census Bureau's MAINTIGR database (TAB20)
Map Created by Geography Division: January 15, 2021

U.S. DEPARTMENT OF COMMERCE U.S. Census Bureau

Projection: Albers Equal Area Conic
Datum: NAD 83
Spheroid: GRS 80
1st Standard Parallel: 37 53 35
2nd Standard Parallel: 41 35 07
Central Meridian: -89 18 43
Latitude of Projection's Origin: 36 58 12
False Easting: 0
False Northing: 0



2020 CENSUS - SCHOOL DISTRICT REFERENCE MAP: Cook County, IL



LEGEND

SYMBOL DESCRIPTION	SYMBOL	LABEL STYLE
International	☆☆☆☆☆	CANADA
Federal American Indian Reservation	□□□□□	L'ANSE RES 1880
Off-Reservation Trust Land	□□□□□	T1880
State American Indian Reservation	□□□□□	Tama Res 9400
Alaska Native Regional Corporation	+++++	NANA ANRC 52120
State (or statistically equivalent entity)	//////	NEW YORK 36
County (or statistically equivalent entity)	□□□□	ERIE 029
Minor Civil Division (MCD) ^{1,2}	□□□□	Bristol town 07485
Consolidated City	□□□□	MILFORD 47500
Incorporated Place ³	□□□□	Davis 18100
Census Designated Place (CDP) ²	□□□□	Incline Village 35100
Unified School District ⁴	●●●●●	UNI 03370
Secondary School District ⁴	—	SEC 99965
Elementary School District ⁴	—	ELM 02220

DESCRIPTION	SYMBOL	DESCRIPTION	SYMBOL
Interstate	—	Water Body	Pleasant Lake
U.S. Highway	—	Military	Port Belvoir
State Highway or State Road	—	National or State Park, Forest, or Recreation Area	Yosemite NP
Other Road	—	Inset Area	A1
AWD Trail, Stairway, Alley, Walkway, or Ferry	—	Outside Subject Area	
Railroad	—		
Pipeline or Power Line	—		
Ridge or Fence	—		
Nonvisible Boundary or Feature Not Elsewhere Classified	—		

Where international, state, county, and/or MCD boundaries coincide, the map shows the boundary symbol for only the highest-ranking of these boundaries.

Geographic area names are followed by either their FIPS or census code.

1 MCD boundaries are shown in the following states in which some or all MCDs function as general-purpose governmental units: Connecticut, Illinois, Indiana, Kansas, Maine, Massachusetts, Michigan, Minnesota, Missouri, Nebraska, New Hampshire, New Jersey, New York, North Dakota, Ohio, Pennsylvania, Rhode Island, South Dakota, Vermont, and Wisconsin. (Note that Illinois and Nebraska have some counties covered by nongovernmental precincts and Missouri has most counties covered by nongovernmental townships.)

2 A " " following an MCD name denotes a false MCD. A " " following a place name indicates that a false MCD exists with the same name and FIPS code as the place; the false MCD label is not shown.

3 Place label color corresponds to the place fill color.

4 A " " following a label indicates that the school district is in more than one county.

Due to space limitations, some areas and features such as water bodies, parks, and roads may not be labeled.

SUBJECT AREA SCHOOL DISTRICTS ON MAP SHEET

TYPE	CODE	NAME
ELM	02700	Lemont-Bromberg Combined School District 113A
ELM	19110	LaGrange Highlands School District 106
ELM	19200	Hendale Community Consolidated School District 181
ELM	30220	Ontario School District 135
ELM	30600	Palos Community Consolidated School District 118
ELM	32040	Pleasantdale School District 107
ELM	42570	Willow Springs School District 108
SEC	08400	Consolidated High School District 230
SEC	19300	Hendale Township High School District 86
SEC	23300	Lemont Township High School District 210
SEC	23800	Lyons Township High School District 204

Key to Adjacent Sheets

	5	6
8		9
		11

Sheet Location within Entity

Sheet 8 of 12 PARENT sheets
Total Sheets: 13 (Index 1; Parent 12; Inset 0)

All legal boundaries and names are as of January 1, 2020. The boundaries shown on this map are for Census Bureau statistical data collection and tabulation purposes only; their depiction and designation for statistical purposes does not constitute a determination of jurisdictional authority or rights of ownership or entitlement.

Geographic Vintage: 2020 Census (reference date: January 1, 2020)
Data Source: U.S. Census Bureau's MA7/TIGER database (TAB20)
Map Created by Geography Division: January 15, 2021

U.S. DEPARTMENT OF COMMERCE U.S. Census Bureau

Projection: Albers Equal Area Conic
Datum: NAD 83
Spheroid: GRS 80
1st Standard Parallel: 37 53 35
2nd Standard Parallel: 41 35 07
Central Meridian: -89 18 43
Latitude of Projection's Origin: 36 58 12
False Easting: 0
False Northing: 0

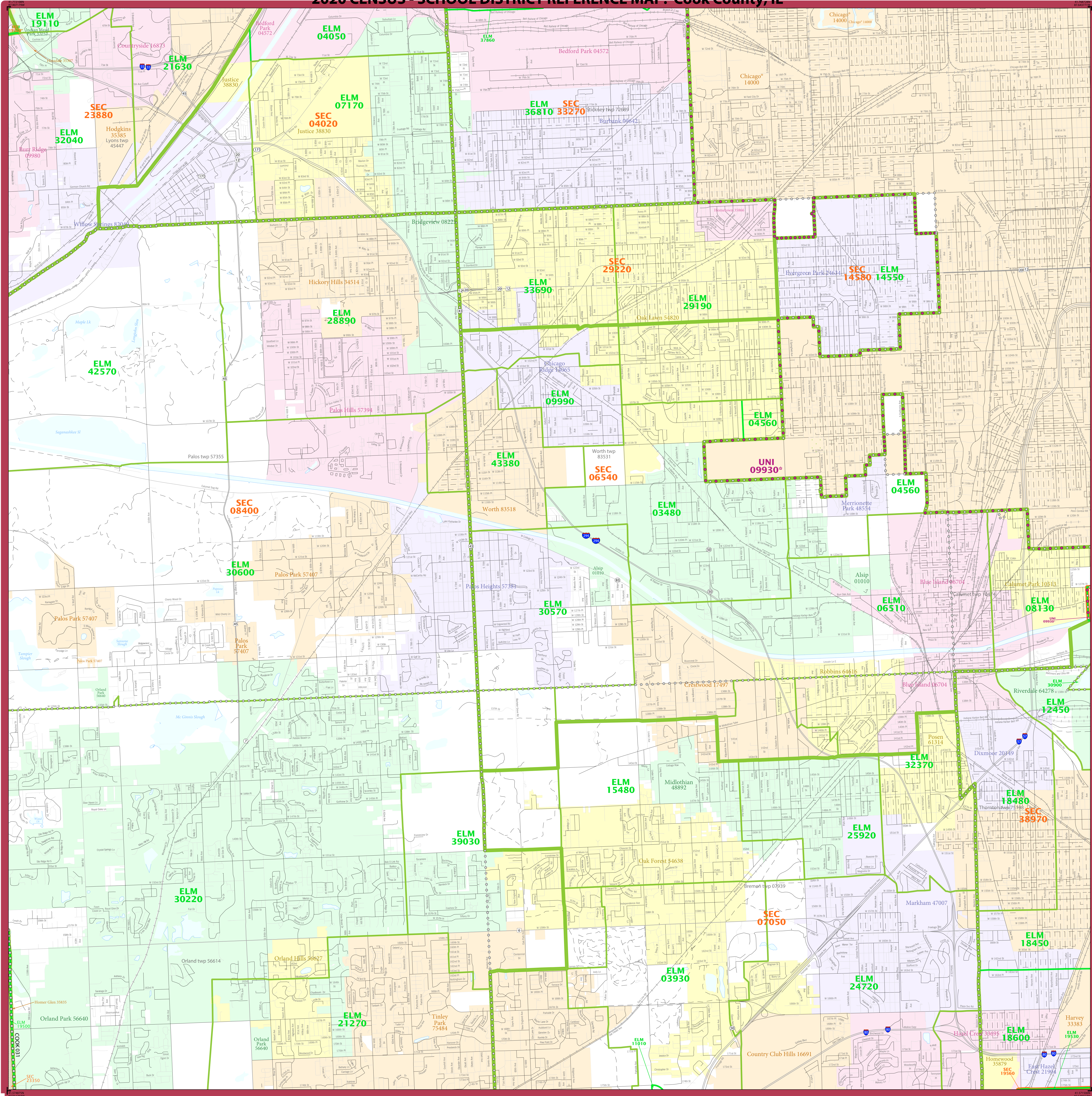
The plotted map scale is 1:30,000



NAME: Cook County (031)
ENTITY TYPE: County or statistically equivalent entity
ST: Illinois (17)

2020 CENSUS 50 REF MAP (PARENT)
Sheet ID: 251517031008

2020 CENSUS - SCHOOL DISTRICT REFERENCE MAP: Cook County, IL



LEGEND

SYMBOL DESCRIPTION	SYMBOL	LABEL STYLE
International	☆☆☆☆☆	CANADA
Federal American Indian Reservation	L'ANSE RES 1880
Off-Reservation Trust Land	T1880
State American Indian Reservation	Tama Res 9400
Alaska Native Regional Corporation	+++++	NANA AMRC 52120
State (or statistically equivalent entity)		NEW YORK 36
County (or statistically equivalent entity)	□□□□	ERIE 029
Minor Civil Division (MCD) ^{1,2}	○ ○ ○ ○ ○	Bristol town 07485
Consolidated City	○ ○ ○ ○ ○	MILFORD 47500
Incorporated Place ³	■ ■ ■ ■ ■	Davis 18100
Census Designated Place (CDP) ³	■ ■ ■ ■ ■	Inline Village 35100
Unified School District ⁴	UNI 03370
Secondary School District ⁴	SEC 99965
Elementary School District ⁴	ELM 02220

DESCRIPTION	SYMBOL	DESCRIPTION	SYMBOL
Interstate	— I —	Water Body	■
U.S. Highway	— 2 —	Military	■
State Highway or State Road	— 3 —	National or State Park, Forest, or Recreation Area	■
Other Road	— 4 —	Inset Area	■
Railroad	— RR —	Outside Subject Area	■
Pipeline or Power Line	— PL —		
Ridge or Fence	— RF —		
Navigable Boundary or Feature Not Elsewhere Classified	— NB —		

Where international, state, county, and/or MCD boundaries coincide, the map shows the boundary symbol for only the highest-ranking of these boundaries.
 Geographic area names are followed by either their FIPS or census code.
 1 MCD boundaries are shown in the following states in which some or all MCDs function as general-purpose governmental units: Connecticut, Illinois, Indiana, Kansas, Maine, Massachusetts, Michigan, Minnesota, Missouri, Nebraska, New Hampshire, New Jersey, New York, North Dakota, Ohio, Pennsylvania, Rhode Island, South Dakota, Vermont, and Wisconsin. (Note that Illinois and Nebraska have some counties covered by non-governmental precincts and Missouri has most counties covered by non-governmental townships.)
 2 A " " following an MCD name denotes a false MCD. A " " following a place name indicates that a false MCD exists with the same name and FIPS code as the place; the false MCD label is not shown.
 3 Place label color corresponds to the place fill color.
 4 A " " following a label indicates that the school district is in more than one county.
 Due to space limitations, some areas and features such as water bodies, parks, and roads may not be labeled.

SUBJECT AREA SCHOOL DISTRICTS ON MAP SHEET

TYPE	CODE	NAME
ELM	03450	Alsip-Hazelgreen-Oaklawn School District 126
ELM	03930	Arbor Park School District 145
ELM	04050	Summit School District 150
ELM	04560	Atwood Heights School District 125
ELM	06510	Cook County School District 130
ELM	07170	Indian Springs School District 109
ELM	08130	Calumet Public School District 132
ELM	09990	Chicago Ridge School District 127.5
ELM	11010	Country Club High School District 160
ELM	12450	Dorton School District 148
ELM	14580	Evergreen Park Elementary School District 124
ELM	15480	Forest Park School District 142
ELM	18450	Harvey School District 152
ELM	18480	West Harvey Dixmoor Public School District 147
ELM	19600	Hazel Crest School District 152.5
ELM	19110	LaGrange Highlands School District 106
ELM	19280	Hinsdale Community Consolidated School District 181
ELM	19530	Homewood School District 153
ELM	21270	Arling School District 140
ELM	21630	LaGrange School District 105
ELM	24720	Prairie Hills Elementary School District 144
ELM	25920	Melothian School District 143
ELM	28890	North Palos School District 117
ELM	29190	Oak Lawn-Homewood School District 123
ELM	30230	Chilad School District 125
ELM	30570	Palos Heights School District 138
ELM	30600	Palos Community Consolidated School District 118
ELM	30900	General George Patton School District 133
ELM	32040	Pharmaceutical School District 103
ELM	32370	Posen-Robbins Elementary School District 143-5
ELM	32890	Ridgecrest School District 122
ELM	36810	Burbank School District 111
ELM	37860	Central Stickney School District 110
ELM	42570	Community Consolidated School District 146
ELM	43380	Worth School District 127
SEC	04020	Argo Community High School District 217
SEC	06400	Community High School District 218
SEC	07050	Bremen Community High School District 228
SEC	08400	Consolidated High School District 86
SEC	14580	Evergreen Park Community High School District 231
SEC	19320	Lyons Township High School District 204
SEC	19560	Homewood-Flossmoor Community High School District 233
SEC	23890	Lyons Township High School District 204
SEC	29220	Oak Lawn Community High School District 229
SEC	33270	Revere Township High School District 220
SEC	38970	Thomson Township High School District 205
UNI	09930	Chicago Public School District 209

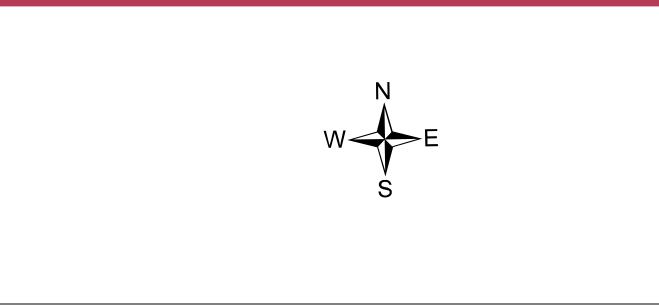
Key to Adjacent Sheets

5	6	7
8	9	10
	11	12

Sheet Location within Entry

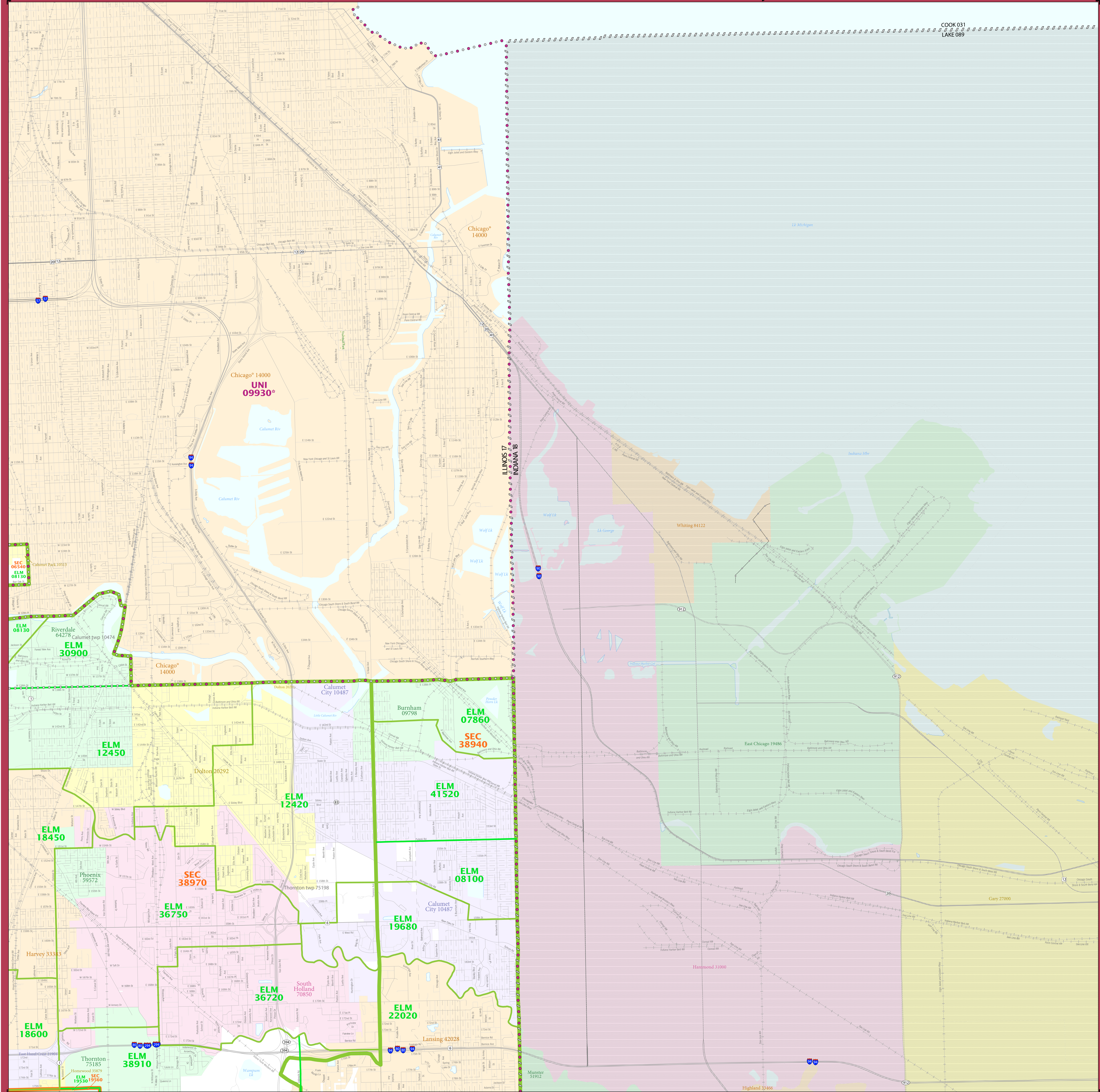
All legal boundaries and names are as of January 1, 2020. The boundaries shown on this map are for Census Bureau statistical data collection and tabulation purposes only; their depiction and designation for statistical purposes does not constitute a determination of jurisdictional authority or rights of ownership or entitlement.
 Geographic Vintage: 2020 Census (reference date: January 1, 2020)
 Data Source: U.S. Census Bureau's MAINTIGR database (TAB20)
 Map Created by Geography Division: January 15, 2021
 U.S. DEPARTMENT OF COMMERCE U.S. Census Bureau

Projection: Albers Equal Area Conic
 Datum: NAD 83
 Spheroid: GRS 80
 1st Standard Parallel: 37 53 35
 2nd Standard Parallel: 41 35 07
 Central Meridian: -89 18 43
 Latitude of Projection's Origin: 36 58 12
 False Easting: 0
 False Northing: 0
 The plotted map scale is 1:300,000



NAME: Cook County (031)
 ENTRY TYPE: County or statistically equivalent entity
 ST: Illinois (17)
 2020 CENSUS 50 REF MAP (PARENT)
 Sheet ID: 25151703109

2020 CENSUS - SCHOOL DISTRICT REFERENCE MAP: Cook County, IL



LEGEND

SYMBOL DESCRIPTION	SYMBOL	LABEL STYLE
International	☆☆☆☆☆	CANADA
Federal American Indian Reservation	■ ■ ■ ■ ■	L'ANSE RES 1880
Off-Reservation Trust Land	■ ■ ■ ■ ■	T1880
State American Indian Reservation	■ ■ ■ ■ ■	Tama Res 9400
Alaska Native Regional Corporation	+++++	NANA ANRC 52120
State (or statistically equivalent entity)	▨ ▨ ▨ ▨ ▨	NEW YORK 36
County (or statistically equivalent entity)	□ □ □ □ □	ERIE 029
Minor Civil Division (MCD) ^{1,2}	○ ○ ○ ○ ○	Bristol town 07485
Consolidated City	○ ○ ○ ○ ○	MILFORD 47500
Incorporated Place ^{3,4}	■ ■ ■ ■ ■	Davis 18100
Census Designated Place (CDP) ³	■ ■ ■ ■ ■	Inline Village 35100
Unified School District ⁴	● ● ● ● ●	UNI 09930*
Secondary School District ⁴	— — — — —	SEC 99965
Elementary School District ⁴	— — — — —	ELM 02220

DESCRIPTION	SYMBOL	DESCRIPTION	SYMBOL
Interstate	— 2 —	Water Body	■
U.S. Highway	— 2 —	Port Belvoir	■
State Highway or State Road	— 2 —	National or State Park, Forest, or Recreation Area	■
Other Road	— — — — —	Yosemite NP	■
4WD Trail, Steepway, Alley, Walkway, or Ferry	— — — — —	Inset Area	■
Railroad	— + — + — + — + —	Outside Subject Area	■
Pipeline or Power Line	— — — — —		
Ridge or Fence	— — — — —		
Nonvisible Boundary or Feature Not Elsewhere Classified	— — — — —		

Where international, state, county, and/or MCD boundaries coincide, the map shows the boundary symbol for only the highest-ranking of these boundaries.
 Geographic area names are followed by either their FIPS or census code.

1 MCD boundaries are shown in the following states in which some or all MCDs function as general-purpose governmental units: Connecticut, Illinois, Indiana, Kansas, Maine, Massachusetts, Michigan, Minnesota, Missouri, Nebraska, New Hampshire, New Jersey, New York, North Dakota, Ohio, Pennsylvania, Rhode Island, South Dakota, Vermont, and Wisconsin. (Note that Illinois and Nebraska have some counties covered by nongovernmental precincts and Missouri has most counties covered by nongovernmental townships.)

2 A '*' following an MCD name denotes a false MCD. A '*' following a place name indicates that a false MCD exists with the same name and FIPS code as the place; the false MCD label is not shown.

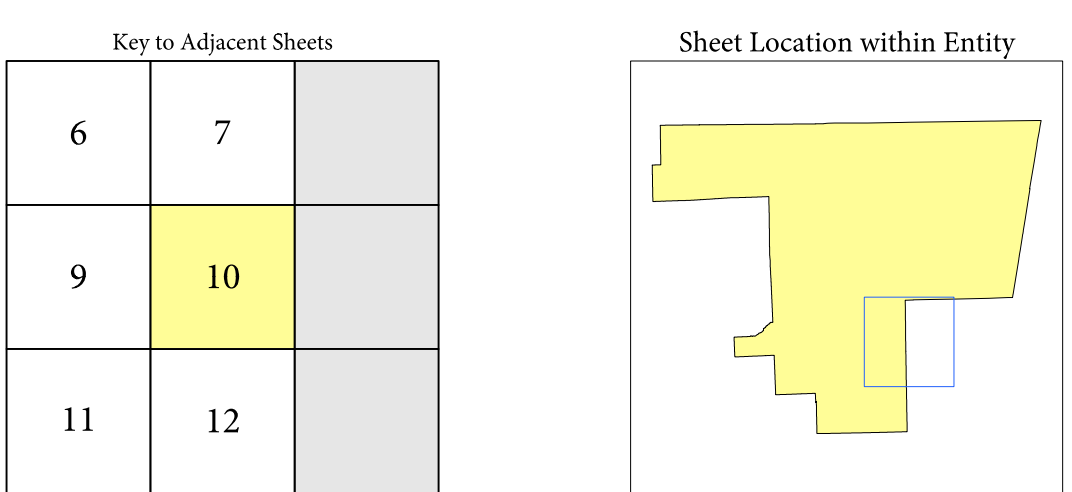
3 Place label color corresponds to the place fill color.

4 A '*' following a label indicates that the school district is in more than one county.

Due to space limitations, some areas and features such as water bodies, parks, and roads may not be labeled.

SUBJECT AREA SCHOOL DISTRICTS ON MAP SHEET

TYPE	CODE	NAME
ELM	07860	Burnham School District 154-5
ELM	08100	Lincoln Elementary School District 156
ELM	08130	Calumet Public School District 132
ELM	12420	Dolton School District 149
ELM	12450	Dolton School District 148
ELM	18450	Harvey School District 152
ELM	18600	Harvey School District 152-5
ELM	19530	Homeewood School District 153
ELM	19680	Hoover School Memorial School District 157
ELM	20200	Lansing School District 158
ELM	30900	General George Patton School District 133
ELM	36720	South Holland School District 150
ELM	36750	South Holland School District 151
ELM	38910	Thornton School District 154
ELM	41520	Calumet City School District 155
SEC	06540	Community High School District 218
SEC	19560	Homeewood-Flossmoor Community High School District 233
SEC	38940	Thornton Fractional Township High School District 215
SEC	38970	Thornton Township High School District 205
UNI	09930	Chicago Public School District 299



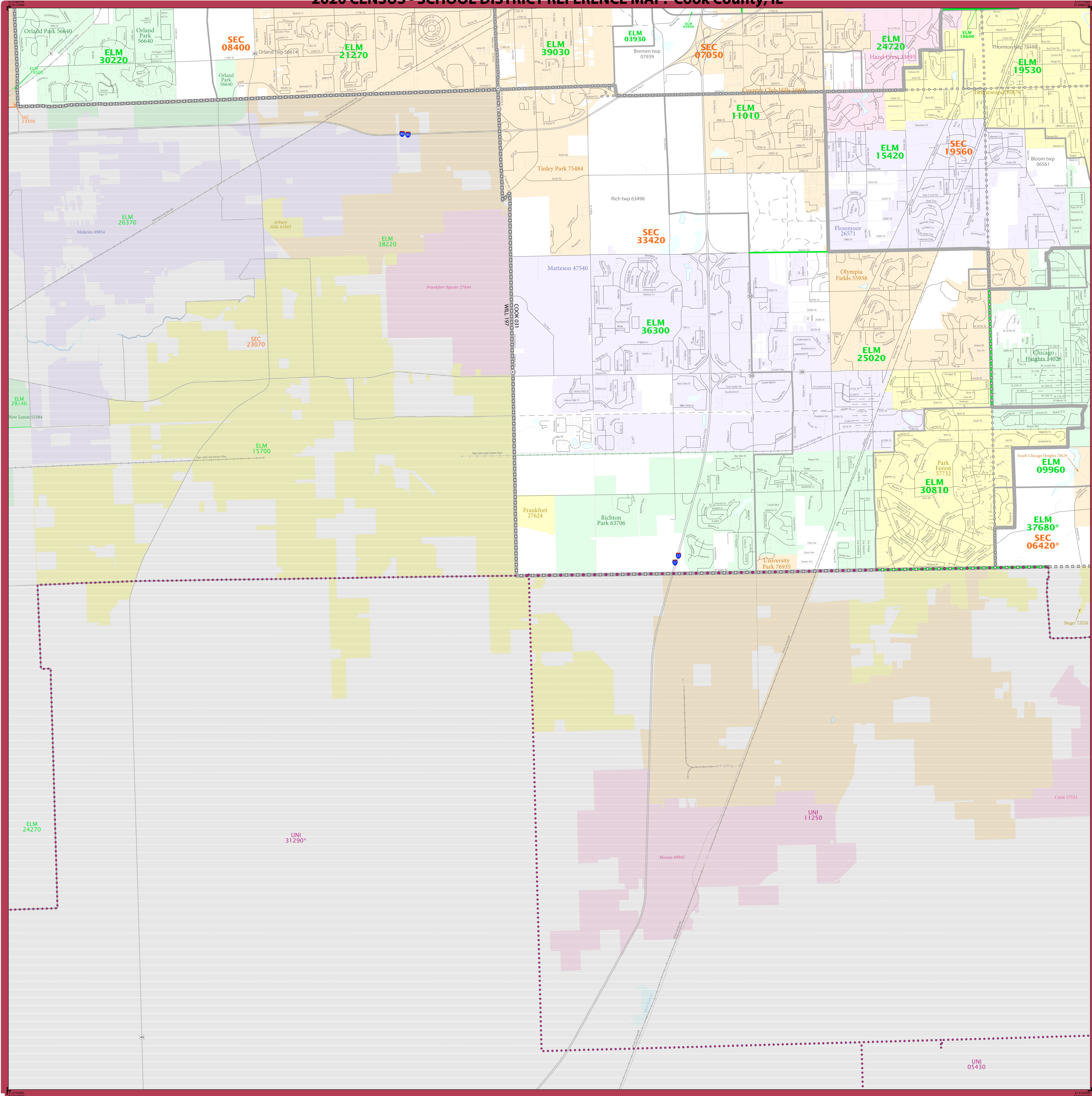
Sheet 10 of 12 PARENT sheets
 Total Sheets: 13 (Index 1; Parent 12; Inset 0)

All legal boundaries and names are as of January 1, 2020. The boundaries shown on this map are for Census Bureau statistical data collection and tabulation purposes only; their depiction and designation for statistical purposes does not constitute a determination of jurisdictional authority or rights of ownership or entitlement.
 Geographic Vintage: 2020 Census (reference date: January 1, 2020)
 Data Source: U.S. Census Bureau's MAINTIGR database (TAB20)
 Map Created by Geography Division: January 15, 2021
 U.S. DEPARTMENT OF COMMERCE U.S. Census Bureau

Projection: Albers Equal Area Conic
 Datum: NAD83
 Spheroid: GRS 80
 1st Standard Parallel: 37 53 35
 2nd Standard Parallel: 41 35 07
 Central Meridian: -89 18 43
 Latitude of Projection's Origin: 36 58 12
 False Easting: 0
 False Northing: 0



2020 CENSUS - SCHOOL DISTRICT REFERENCE MAP: Cook County, IL



LEGEND

SYMBOL DESCRIPTION	SYMBOL	LABEL STYLE
International	☆☆☆☆☆	CANADA
Federal American Indian Reservation	L'ANSE RES 1880
Off-Reservation Trust Land	T1880
State American Indian Reservation	Tama Res 9400
Alaska Native Regional Corporation	+++++	NANA ANRC 52120
State (or statistically equivalent entity)		NEW YORK 36
County (or statistically equivalent entity)	□□□□	ERIE 029
Minor Civil Division (MCD) 1,2	○ ○ ○ ○	Bristol town 07485
Consolidated City	○ ○ ○ ○	MILFORD 47500
Incorporated Place ³	□ □ □ □	Davis 18100
Census Designated Place (CDP) ²	□ □ □ □	Incline Village 55100
Unified School District ⁴	UN1 05370
Secondary School District ⁴	SEC 99965
Elementary School District ⁴	ELM 02220

DESCRIPTION	SYMBOL	DESCRIPTION	SYMBOL
Interstate	[Blue line with shield]	Water Body	[Blue wavy line]
U.S. Highway	[Black line with shield]	Pleasant Lake	[Blue wavy line]
State Highway or State Road	[Black line with shield]	Port Belvoir	[Blue wavy line]
Other Road	[Black line]	National or State Park, Forest, or Recreation Area	[Green wavy line]
4WD Trail, Steeple, Alley, Walkway, or Ferry	[Thin black line]	Yosemite NP	[Green wavy line]
Railroad	[Black line with cross-ticks]	Inset Area	[Green box]
Pipeline or Power Line	[Thin black line]	Outside Subject Area	[Grey box]
Ridge or Fence	[Dashed black line]		
Non-labeled Boundary or Feature Not Elsewhere Classified	[Dotted black line]		

Where international, state, county, and/or MCD boundaries coincide, the map shows the boundary symbol for only the highest-ranking of these boundaries.

Geographic area names are followed by either their FIPS or census code.

1 MCD boundaries are shown in the following states in which some or all MCDs function as general-purpose governmental units: Connecticut, Illinois, Indiana, Kansas, Maine, Massachusetts, Michigan, Minnesota, Missouri, Nebraska, New Hampshire, New Jersey, New York, North Dakota, Ohio, Pennsylvania, Rhode Island, South Dakota, Vermont, and Wisconsin. (Note that Illinois and Nebraska have some counties covered by nongovernmental precincts and Missouri has most counties covered by nongovernmental townships.)

2 A " " following an MCD name denotes a false MCD. A " " following a place name indicates that a false MCD exists with the same name and FIPS code as the place; the false MCD label is not shown.

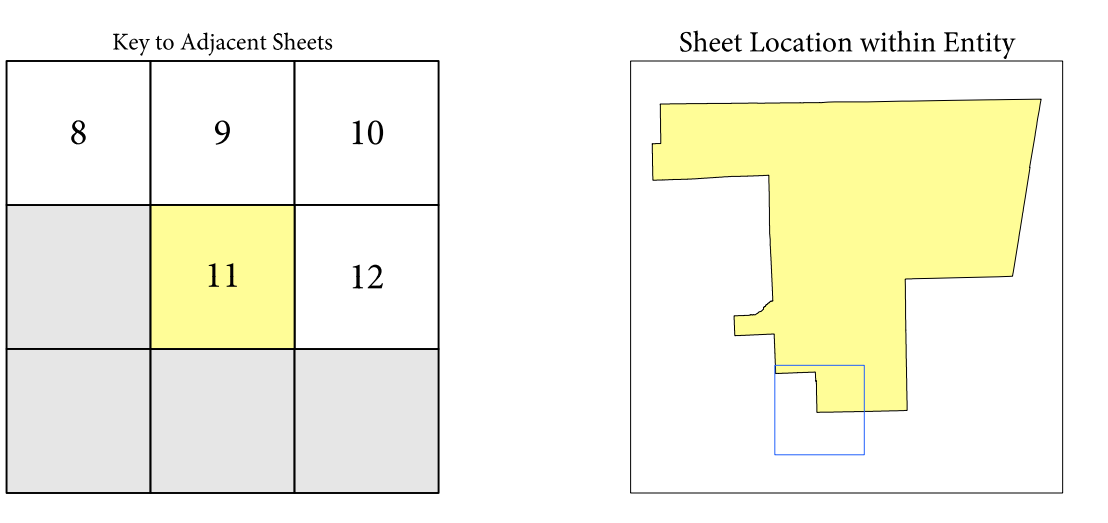
3 Place label color corresponds to the place fill color.

4 A " " following a label indicates that the school district is in more than one county.

Due to space limitations, some areas and features such as water bodies, parks, and roads may not be labeled.

SUBJECT AREA SCHOOL DISTRICTS ON MAP SHEET

TYPE	CODE	NAME
ELM	03930	Arlow Park School District 145
ELM	09960	Chicago Heights School District 170
ELM	11910	Country Club Hills School District 160
ELM	15420	Flossmoor School District 161
ELM	18600	Hazel Crest School District 152-5
ELM	19530	Homewood School District 153
ELM	21270	Kirby School District 40
ELM	24720	Prairie Hills Elementary School District 144
ELM	25020	Matteson Elementary School District 162
ELM	30220	Ogden School District 135
ELM	30810	Park Forest School District 163
ELM	36300	Elementary School District 159
ELM	37680	Steger School District 184
ELM	39030	Community Consolidated School District 146
SEC	06420	Bremen Township High School District 206
SEC	07050	Bremen Community High School District 228
SEC	08430	Consolidated High School District 239
SEC	19560	Homewood-Flossmoor Community High School District 233
SEC	33420	Rich Township High School District 227
SEC	38970	Thornton Township High School District 205



All legal boundaries and names are as of January 1, 2020. The boundaries shown on this map are for Census Bureau's statistical data collection and tabulation purposes only; their depiction and designation for statistical purposes does not constitute a determination of jurisdictional authority or rights of ownership or entitlement.

Geographic: Vintage: 2020 Census (reference date: January 1, 2020)
 Data Source: U.S. Census Bureau's MAINTIGR database (TAB20)
 Map Created by Geography Division: January 15, 2021

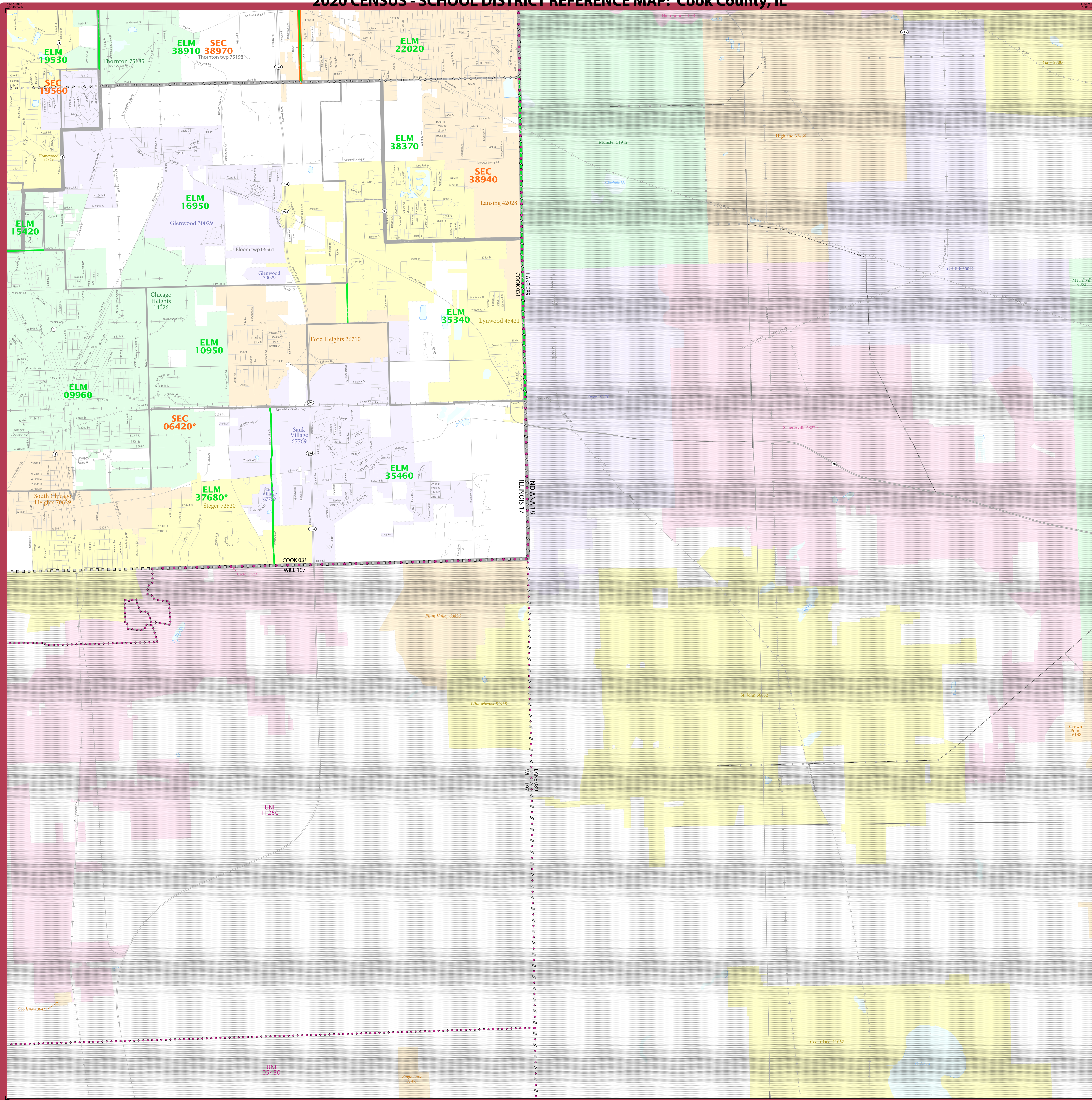
U.S. DEPARTMENT OF COMMERCE U.S. Census Bureau

Projection: Albers Equal Area Conic
 Datum: NAD83
 Spheroid: GRS 80
 1st Standard Parallel: 37 53 35
 2nd Standard Parallel: 41 35 07
 Central Meridian: -89 18 43
 Latitude of Projection's Origin: 36 58 12
 False Easting: 0
 False Northing: 0

The plotted map scale is 1:30,000

2020 CENSUS 50 REF MAP (PARENT)
 Sheet ID: 251517031011

2020 CENSUS - SCHOOL DISTRICT REFERENCE MAP: Cook County, IL



LEGEND

SYMBOL DESCRIPTION	SYMBOL	LABEL STYLE
International	☆☆☆☆☆	CANADA
Federal American Indian Reservation	L'ANSE RES 1880
Off-Reservation Trust Land	T1880
State American Indian Reservation	Tama Res 9400
Alaska Native Regional Corporation	+++++	NANA ANRC 52120
State (or statistically equivalent entity)	////	NEW YORK 36
County (or statistically equivalent entity)	□□□□	ERIE 029
Minor Civil Division (MCD) ^{1,2}	○○○○○	Bristol town 07485
Consolidated City	○○○○○	MILFORD 47500
Incorporated Place ³	□□□□	Davis 18100
Census Designated Place (CDP) ⁴	□□□□	Incline Village 35100
Unified School District ⁴	UNI 05370
Secondary School District ⁴	SEC 99965
Elementary School District ⁴	ELM 02220

DESCRIPTION	SYMBOL	DESCRIPTION	SYMBOL
Interstate	— — —	Water Body
U.S. Highway	— — —	Military
State Highway or State Road	— — —	National or State Park, Forest, or Recreation Area
Other Road	— — —	Yosemite NP ⁵
4WD Trail, Steepway, Alley, Walkway, or Ferry	Inset Area
Railroad	— — —	Outside Subject Area
Pipeline or Power Line		
Ridge or Fence		
Nonvisible Boundary or Feature Not Elsewhere Classified		

Where international, state, county, and/or MCD boundaries coincide, the map shows the boundary symbol for only the highest-ranking of these boundaries. Geographic area names are followed by either their FIPS or census code.

1 MCD boundaries are shown in the following states in which some or all MCDs function as general-purpose governmental units: Connecticut, Illinois, Indiana, Kansas, Maine, Massachusetts, Michigan, Minnesota, Missouri, Nebraska, New Hampshire, New Jersey, New York, North Dakota, Ohio, Pennsylvania, Rhode Island, South Dakota, Vermont, and Wisconsin. (Note that Illinois and Nebraska have some counties covered by nongovernmental precincts and Missouri has most counties covered by nongovernmental townships.)

2 A " " following an MCD name denotes a false MCD. A " " following a place name indicates that a false MCD exists with the same name and FIPS code as the place; the false MCD label is not shown.

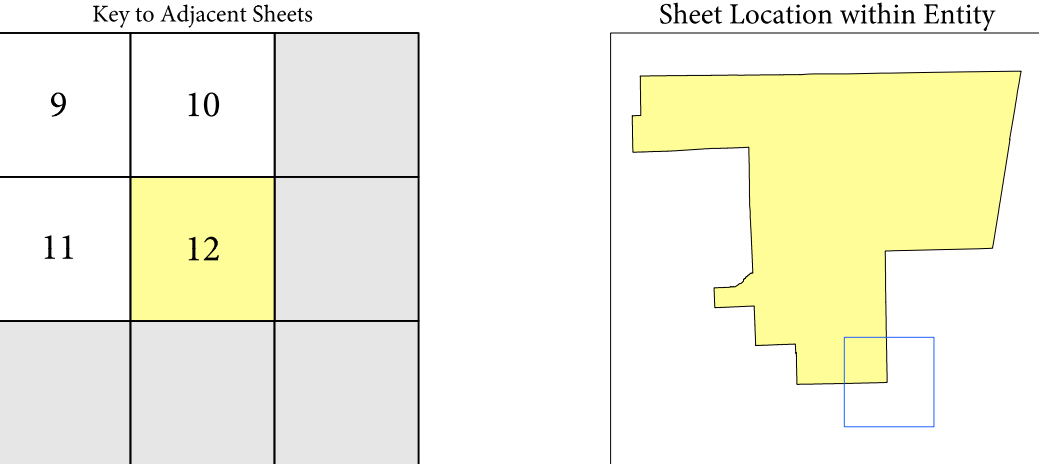
3 Place label color corresponds to the place fill color.

4 A " " following a label indicates that the school district is in more than one county.

Due to space limitations, some areas and features such as water bodies, parks, and roads may not be labeled.

SUBJECT AREA SCHOOL DISTRICTS ON MAP SHEET

TYPE	CODE	NAME
ELM	09960	Chicago Heights School District 170
ELM	10950	Ford Heights School District 169
ELM	15420	Plasmater School District 161
ELM	16950	Brookwood School District 167
ELM	19530	Homewood School District 153
ELM	22020	Lansing School District 158
ELM	35340	Sandridge School District 172
ELM	35460	Community Consolidated School District 168
ELM	37680	Steger School District 184
ELM	38370	Sunnybrook School District 171
ELM	38910	Thornton School District 154
ELM	06420	Bloom Township High School District 200
SEC	19560	Homewood-Flossmoor Community High School District 233
SEC	38940	Thornton Fractional Township High School District 215
SEC	38970	Thornton Township High School District 205



Sheet 12 of 12 PARENT sheets
Total Sheets: 13 (Index 1; Parent 12; Inset 0)

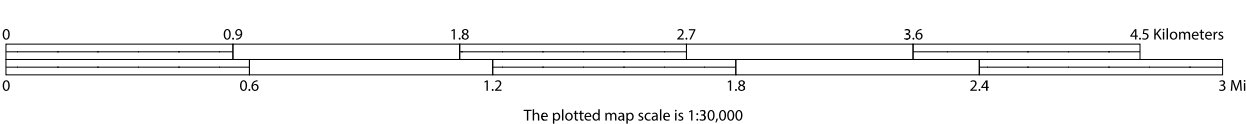
NAME: Cook County (031)
ENTITY TYPE: County or statistically equivalent entity
ST: Illinois (17)

All legal boundaries and names are as of January 1, 2020. The boundaries shown on this map are for Census Bureau's statistical data collection and tabulation purposes only; their depiction and designation for statistical purposes does not constitute a determination of jurisdictional authority or rights of ownership or entitlement.

Geographic Vintage: 2020 Census (reference date: January 1, 2020)
Data Source: U.S. Census Bureau's MA7/TIGER database (TAB20)
Map Created by Geography Division: January 15, 2021

U.S. DEPARTMENT OF COMMERCE U.S. Census Bureau

Projection: Albers Equal Area Conic
Datum: NAD 83
Spheroid: GRS 80
1st Standard Parallel: 37 53 35
2nd Standard Parallel: 41 35 07
Central Meridian: -89 18 43
Latitude of Projection's Origin: 36 58 12
False Easting: 0
False Northing: 0



2020 CENSUS 50 REF MAP (PARENT)
Sheet ID: 25151701012