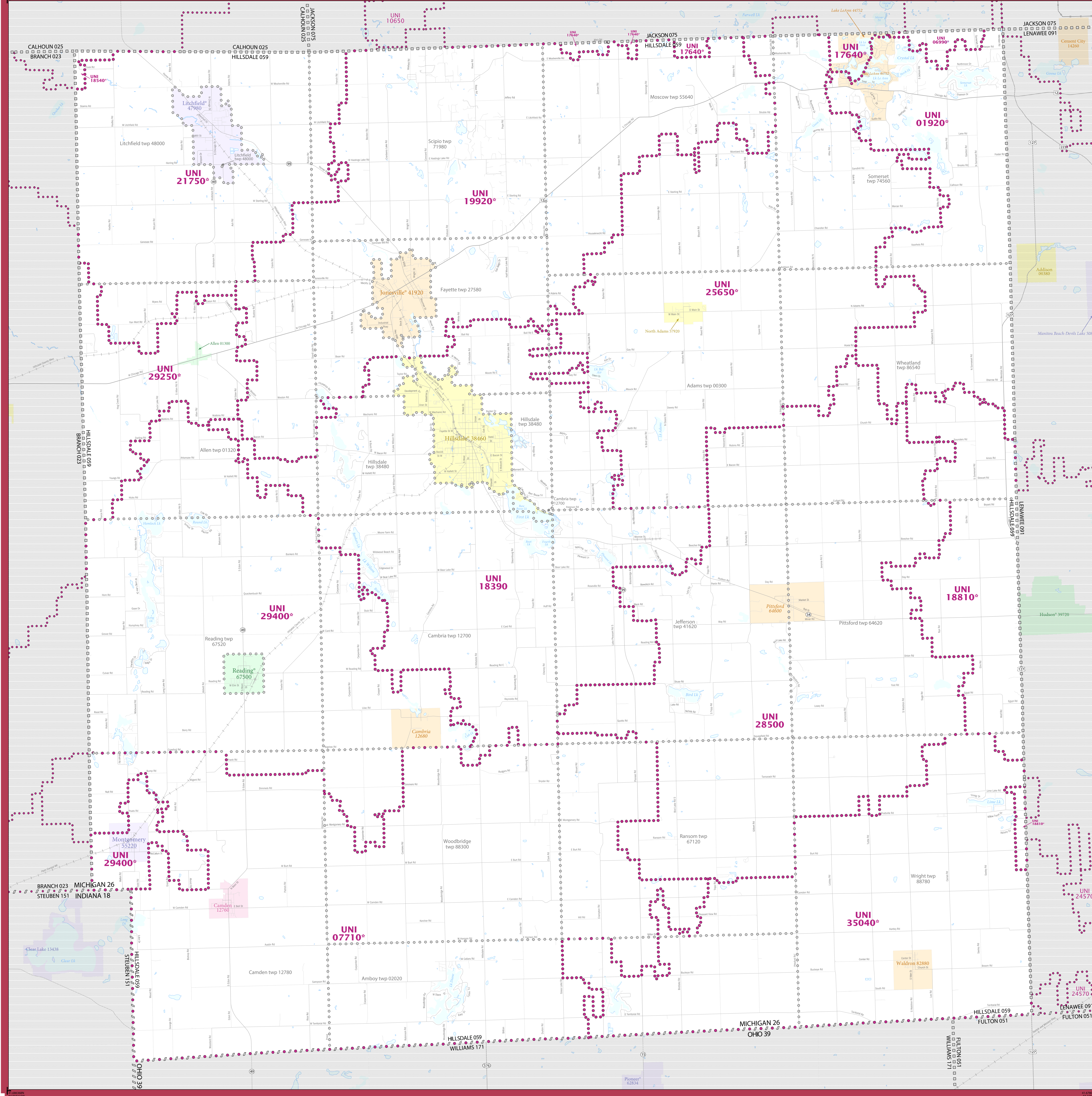


2020 CENSUS - SCHOOL DISTRICT REFERENCE MAP: Hillsdale County, MI



LEGEND

SYMBOL DESCRIPTION	SYMBOL	SYMBOL	SYMBOL	DESCRIPTION	SYMBOL
International	☆☆☆☆☆	☆☆☆☆☆	☆☆☆☆☆	Water Body	
Federal American Indian Reservation				Military	
Off-Reservation Trust Land				National or State Park, Forest, or Recreation Area	
State American Indian Reservation				Other Road	
Alaska Native Regional Corporation	+++++			Railroad	
State (or statistically equivalent entity)				Pipeline or Power Line	
County (or statistically equivalent entity)				Ridge or Fence	
Minor Civil Division (MCD) 1,2				Navigable Boundary or Feature Not Elsewhere Classified	
Consolidated City					
Incorporated Place 3,3					
Census Designated Place (CDP) 3					
Unified School District 4					
Secondary School District 4					
Elementary School District 4					

Where international, state, county, and/or MCD boundaries coincide, the map shows the boundary symbol for only the highest-ranking of these boundaries.

Geographic area names are followed by either their FIPS or census code.

- MCD boundaries are shown in the following states in which some or all MCDs function as general-purpose governmental units: Connecticut, Illinois, Indiana, Kansas, Maine, Massachusetts, Michigan, Minnesota, Missouri, Nebraska, New Hampshire, New Jersey, New York, North Dakota, Ohio, Pennsylvania, Rhode Island, South Dakota, Vermont, and Wisconsin. (Note that Illinois and Nebraska have some counties covered by nongovernmental precincts and Missouri has most counties covered by nongovernmental townships.)
- A " " following an MCD name denotes a false MCD. A " " following a place name indicates that a false MCD exists with the same name and FIPS code as the place; the false MCD label is not shown.
- Place label color corresponds to the place fill color.
- A " " following a label indicates that the school district is in more than one county.

Due to space limitations, some areas and features such as water bodies, parks, and roads may not be labeled.

SUBJECT AREA SCHOOL DISTRICTS ON MAP SHEET

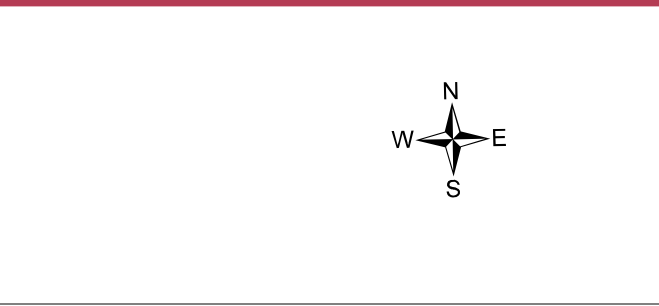
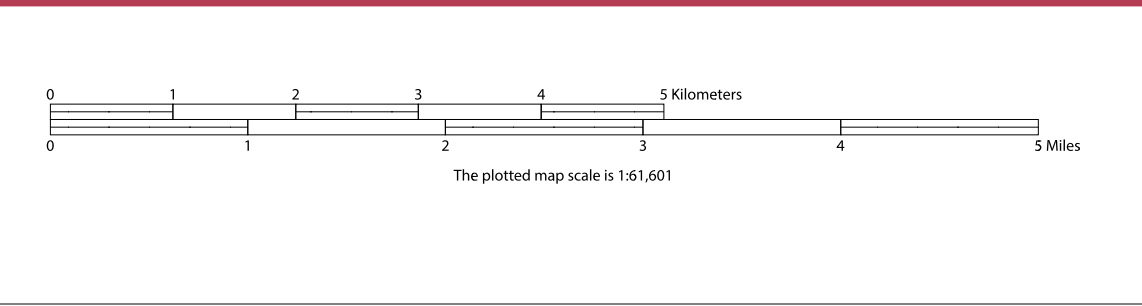
TYPE	CODE	NAME
UNI	01920	Addison Community Schools
UNI	06990	Columbia School District
UNI	07710	Camden Frontier School District
UNI	17640	Harvor Horton Schools
UNI	18390	Hillsdale Community Schools
UNI	18540	Homer Community Schools
UNI	18810	Hudson Area Schools
UNI	19920	Jonesville Community Schools
UNI	21750	Litchfield Community Schools
UNI	25650	North Adams Jerome Schools
UNI	28500	Pittsford Area Schools
UNI	29250	Quincy Community School District
UNI	29400	Reading Community Schools
UNI	35040	Waldron Area Schools

All legal boundaries and names are as of January 1, 2020. The boundaries shown on this map are for Census Bureau statistical data collection and tabulation purposes only; their depiction and designation for statistical purposes does not constitute a determination of jurisdictional authority or rights of ownership or entitlement.

Geographic: Vintage: 2020 Census (reference date: January 1, 2020)
 Data Source: U.S. Census Bureau's MA7/TIGER database (TAB20)
 Map Created by Geography Division: January 15, 2021

U.S. DEPARTMENT OF COMMERCE U.S. Census Bureau

Projection: Albers Equal Area Conic
 Datum: NAD83
 Spheroid: GRS 80
 1st Standard Parallel: 42 47 51
 2nd Standard Parallel: 47 12 16
 Central Meridian: 86 16 13
 Latitude of Projection's Origin: 41 41 45
 False Easting: 0
 False Northing: 0



Sheet 1 of 1 PARENT sheets
 Total Sheets: 1 (Index 0; Parent 1; Inset 0)

NAME: Hillsdale County (059)
 ENTITY TYPE: County or statistically equivalent entity
 ST: Michigan (26)

2020 CENSUS SD MAP (PARENT)
 Sheet ID: 25113609001