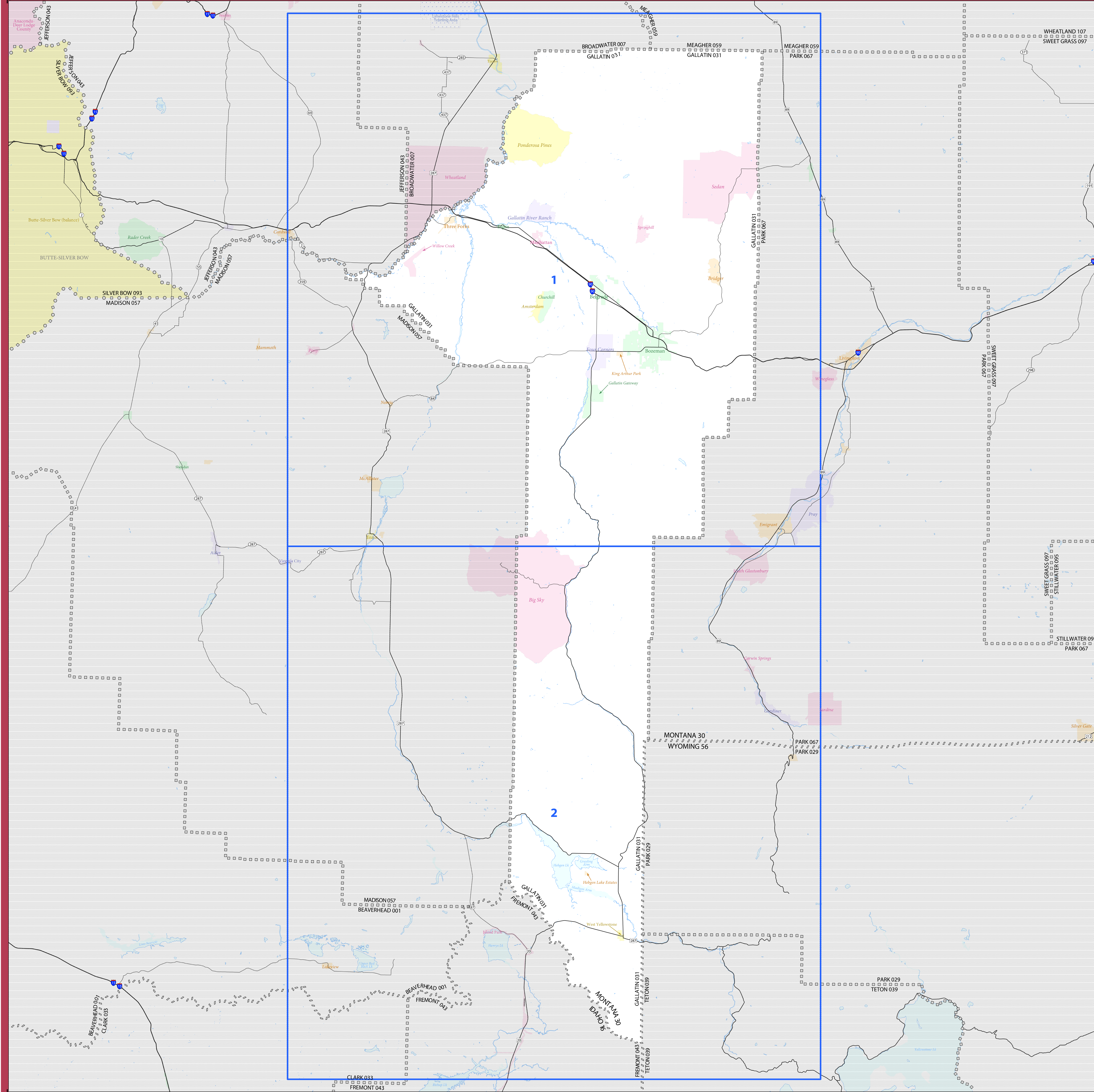


2020 CENSUS - SCHOOL DISTRICT REFERENCE MAP: Gallatin County, MT



LEGEND

SYMBOL DESCRIPTION	SYMBOL	LABEL STYLE
International	☆☆☆☆☆	CANADA
Federal American Indian Reservation	[Dotted Pattern]	L'ANSE RES 1880
Off-Reservation Trust Land	[Dotted Pattern]	T1880
State American Indian Reservation	[Dotted Pattern]	Tama Res 9400
Alaska Native Regional Corporation	+++++	NANA ANRC 52120
State (or statistically equivalent entity)	//////	NEW YORK 36
County (or statistically equivalent entity)	□□□□	ERIE 029
Minor Civil Division (MCD) ^{1,2}	○○○○	Bristol town 07485
Consolidated City	○●○○○	MILFORD 47500
Incorporated Place ^{3,3}	[Color Swatches]	Davis 18100
Census Designated Place (CDP) ³	[Color Swatches]	Incline Village 35100
Unified School District ⁴	[Thick Line]	UNI 03370
Secondary School District ⁴	[Thick Line]	SEC 99965
Elementary School District ⁴	[Thick Line]	ELM 02220

DESCRIPTION	SYMBOL	DESCRIPTION	SYMBOL
Interstate	[Blue Line]	Water Body	[Blue Area]
U.S. Highway	[Black Line]	Military	[Star Symbol]
State Highway or State Road	[Black Line]	National or State Park, Forest, or Recreation Area	[Green Area]
Other Road	[Thin Line]	Yosemite NP	[Green Area]
Railroad	[Black Line]	Inset Area	[Green Area]
Pipeline or Power Line	[Thin Line]	Outside Subject Area	[Grey Area]
Ridge or Fence	[Dashed Line]		
Nonvisible Boundary or Feature Not Elsewhere Classified	[Dotted Line]		

Where international, state, county, and/or MCD boundaries coincide, the map shows the boundary symbol for only the highest-ranking of these boundaries.

Geographic area names are followed by either their FIPS or census code.

1 MCD boundaries are shown in the following states in which some or all MCDs function as general-purpose governmental units: Connecticut, Illinois, Indiana, Kansas, Maine, Massachusetts, Michigan, Minnesota, Missouri, Nebraska, New Hampshire, New Jersey, New York, North Dakota, Ohio, Pennsylvania, Rhode Island, South Dakota, Vermont, and Wisconsin. (Note that Illinois and Nebraska have some counties covered by nongovernmental precincts and Missouri has most counties covered by nongovernmental townships.)

2 A " " following an MCD name denotes a false MCD. A " " following a place name indicates that a false MCD exists with the same name and FIPS code as the place; the false MCD label is not shown.

3 Place label color corresponds to the place fill color.

4 A " " following a label indicates that the school district is in more than one county.

Due to space limitations, some areas and features such as water bodies, parks, and roads may not be labeled.

Note: This index map sheet provides the map sheet configuration in relation to the subject entity. Due to scale limitations, map content may be simplified. Refer to parent and/or inset map sheets for detailed map content.

All legal boundaries and names are as of January 1, 2020. The boundaries shown on this map are for Census Bureau statistical data collection and tabulation purposes only; their depiction and designation for statistical purposes does not constitute a determination of jurisdictional authority or rights of ownership or entitlement.

Geographic Vintage: 2020 Census (reference date: January 1, 2020)
 Data Source: U.S. Census Bureau's MA7/TIGER database (TIGER20)
 Map Created by Geography Division: December 22, 2020

U.S. DEPARTMENT OF COMMERCE U.S. Census Bureau

Projection: Albers Equal Area Conic
 Datum: NAD 83
 Spheroid: GRS 80
 1st Standard Parallel: 45 07 55
 2nd Standard Parallel: 48 13 38
 Central Meridian: -110 02 38
 Latitude of Projection's Origin: 44 21 29
 False Easting: 0
 False Northing: 0

Scale: 1:250,000
 The plotted map scale is 1:250,000

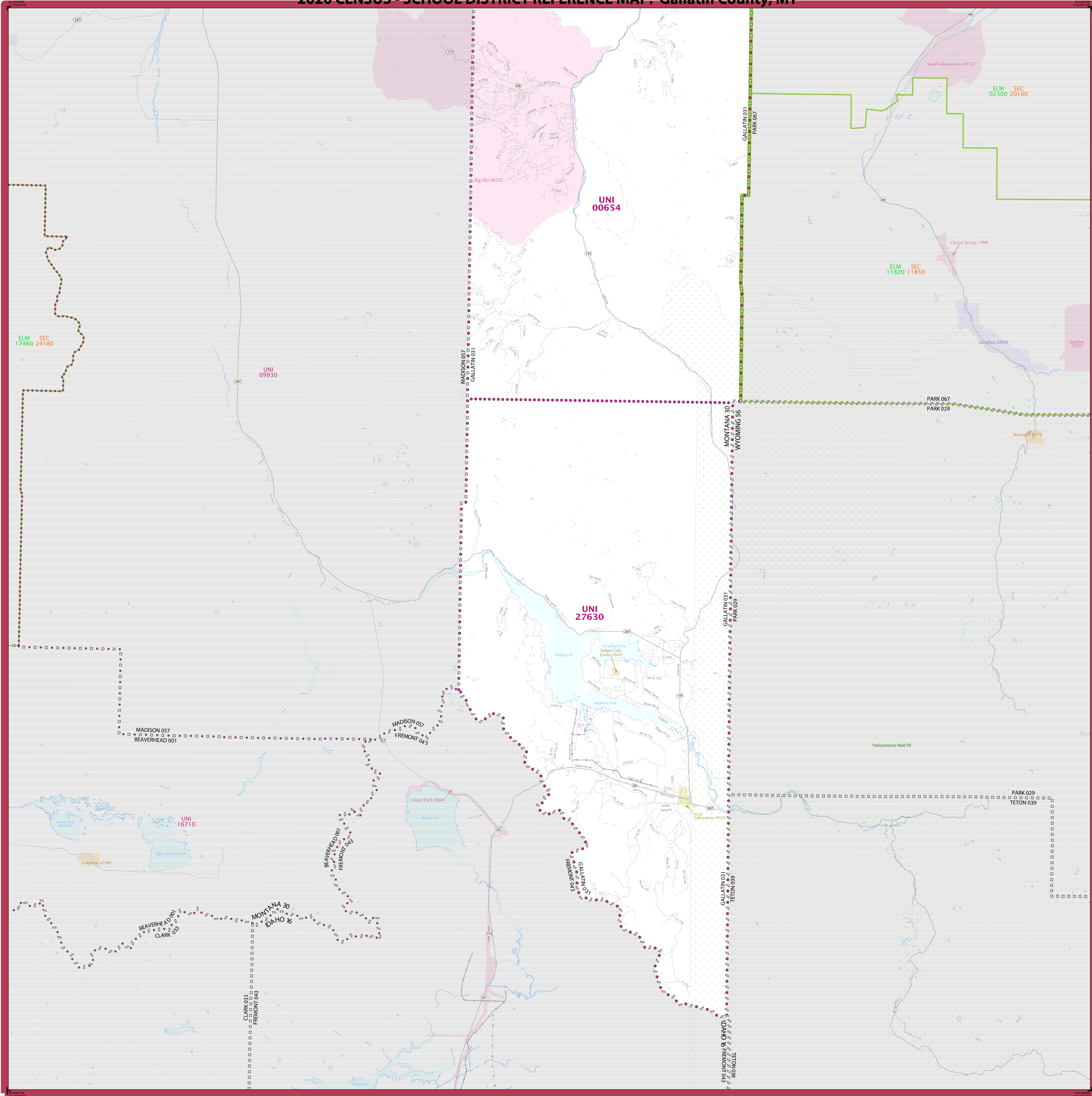


Total Sheets: 3 (Index 1; Parent 2; Inset 0)

NAME: Gallatin County (031)
 ENTITY TYPE: County or statistically equivalent entity
 ST: Montana (30)

2020 CENSUS SD REF MAP (INDEX)
 Sheet ID: 25153001000

2020 CENSUS - SCHOOL DISTRICT REFERENCE MAP: Gallatin County, MT



LEGEND

SYMBOL DESCRIPTION	SYMBOL	LABEL STYLE
International	☆☆☆☆☆	CANADA
Federal American Indian Reservation	[Dotted Pattern]	L'ANSE RES 1880
Off-Reservation Trust Land	[Dotted Pattern]	T1880
State American Indian Reservation	[Dotted Pattern]	Tama Res 9400
Alaska Native Regional Corporation	+++++	NANA ANRC 52120
State (or statistically equivalent entity)		NEW YORK 36
County (or statistically equivalent entity)	□□□□□	ERIE 029
Minor Civil Division (MCD) ^{1,2}	○○○○○	Bristol town 07485
Consolidated City	⊙⊙⊙⊙⊙	MILFORD 47500
Incorporated Place ^{3,4}	[Color Swatches]	Davis 18100
Census Designated Place (CDP) ³	[Color Swatches]	Incline Village 35100
Unified School District ⁴	●●●●●	UNI 03370
Secondary School District ⁴	—	SEC 99965
Elementary School District ⁴	—	ELM 02220

DESCRIPTION	SYMBOL	DESCRIPTION	SYMBOL
Interstate	[Blue Line]	Water Body	[Blue Area]
U.S. Highway	[Black Line]	Military	[Green Line]
State Highway or State Road	[Black Line]	National or State Park, Forest, or Recreation Area	[Green Area]
Other Road	[Thin Black Line]	Yosemite NP	[Green Area]
4WD Trail, Stairway, Alley, Walkway, or Ferry	[Thin Black Line]	Inset Area	[Green Area]
Railroad	[Black Line]	Outside Subject Area	[Grey Area]
Pipeline or Power Line	[Black Line]		
Ridge or Fence	[Dashed Line]		
Notable Boundary or Feature Not Elsewhere Classified	[Dashed Line]		

Where international, state, county, and/or MCD boundaries coincide, the map shows the boundary symbol for only the highest-ranking of these boundaries.

Geographic area names are followed by either their FIPS or census code.

1 MCD boundaries are shown in the following states in which some or all MCDs function as general-purpose governmental units: Connecticut, Illinois, Indiana, Kansas, Maine, Massachusetts, Michigan, Minnesota, Missouri, Nebraska, New Hampshire, New Jersey, New York, North Dakota, Ohio, Pennsylvania, Rhode Island, South Dakota, Vermont, and Wisconsin. (Note that Illinois and Nebraska have some counties covered by nongovernmental precincts and Missouri has most counties covered by nongovernmental townships.)

2 A " " following an MCD name denotes a false MCD. A " " following a place name indicates that a false MCD exists with the same name and FIPS code as the place; the false MCD label is not shown.

3 Place label color corresponds to the place fill color.

4 A " " following a label indicates that the school district is in more than one county.

Due to space limitations, some areas and features such as water bodies, parks, and roads may not be labeled.

SUBJECT AREA SCHOOL DISTRICTS ON MAP SHEET

TYPE	CODE	NAME
UNI	00654	Big Sky School K-12
UNI	27630	West Yellowstone K-12

Key to Adjacent Sheets

	1	
	2	

Sheet Location within Entity

All legal boundaries and names are as of January 1, 2020. The boundaries shown on this map are for Census Bureau statistical data collection and tabulation purposes only; their depiction and designation for statistical purposes does not constitute a determination of jurisdictional authority or rights of ownership or entitlement.

Geographic Vintage: 2020 Census (reference date: January 1, 2020)
 Data Source: U.S. Census Bureau's MA/TIGER database (TAB20)
 Map Created by Geography Division: December 22, 2020

U.S. DEPARTMENT OF COMMERCE U.S. Census Bureau

Projection: Albers Equal Area Conic
 Datum: NAD 83
 Spheroid: GRS 80
 1st Standard Parallel: 45 07 55
 2nd Standard Parallel: 48 13 38
 Central Meridian: -110 02 38
 Latitude of Projection's Origin: 44 21 29
 False Easting: 0
 False Northing: 0



NAME: Gallatin County (031)
 ENTITY TYPE: County or statistically equivalent entity
 ST: Montana (30)

2020 CENSUS 50 REF MAP (PARENT)
 Sheet ID: 25153001002