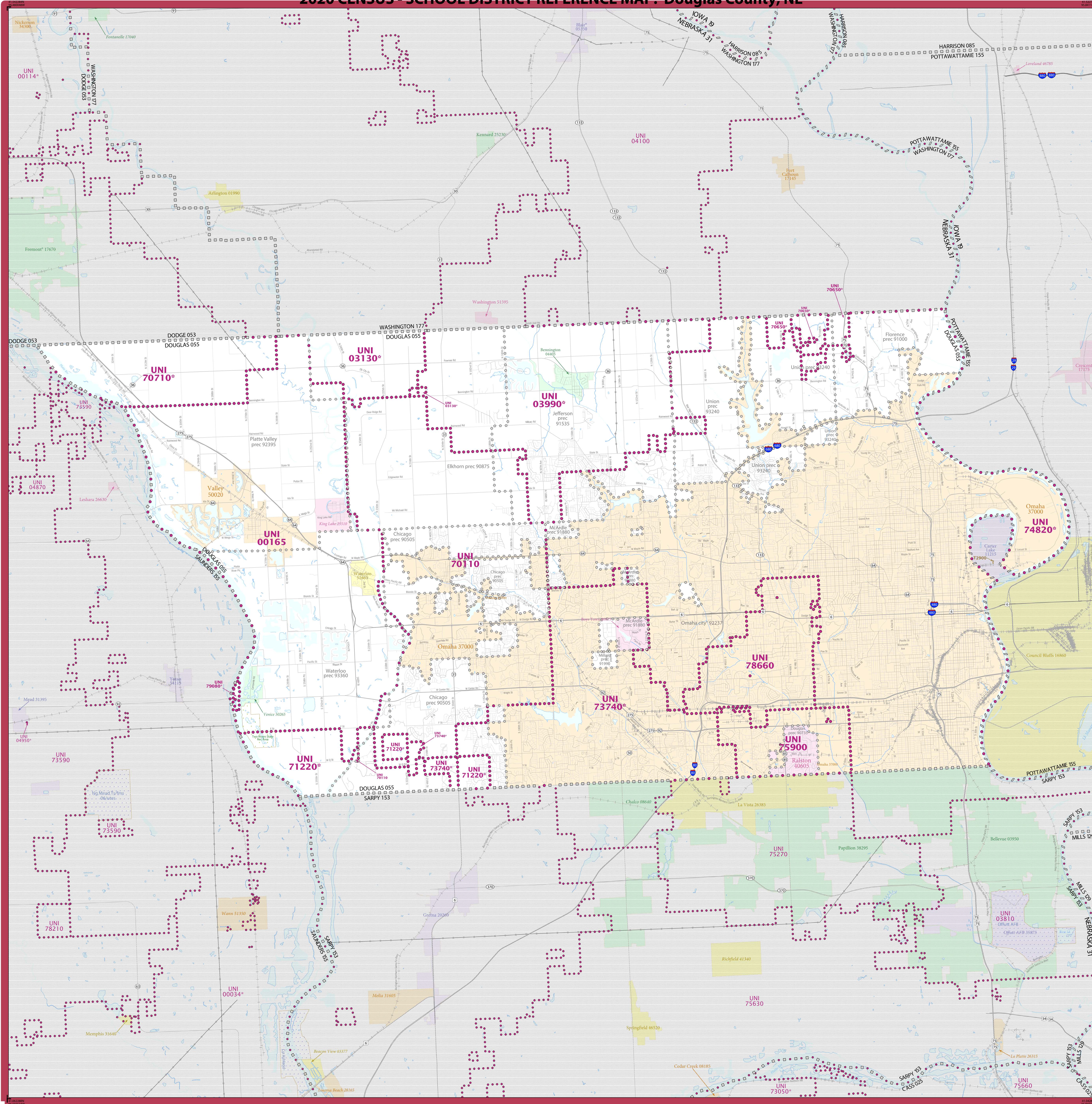


2020 CENSUS - SCHOOL DISTRICT REFERENCE MAP: Douglas County, NE



LEGEND

SYMBOL DESCRIPTION	SYMBOL	LABEL STYLE
International	☆☆☆☆☆	CANADA
Federal American Indian Reservation	[Dotted Pattern]	L'ANSE RES 1880
Off-Reservation Trust Land	[Dotted Pattern]	T1880
State American Indian Reservation	[Dotted Pattern]	Tama Res 9400
Alaska Native Regional Corporation	+++++	NANA ANRC 52120
State (or statistically equivalent entity)		NEW YORK 36
County (or statistically equivalent entity)	□□□□	ERIE 029
Minor Civil Division (MCD) ^{1,2}	○	Bristol town 07485
Consolidated City	○	MILFORD 47500
Incorporated Place ^{3,4}	[Color Swatches]	Davis 18100
Census Designated Place (CDP) ³	[Color Swatches]	Incline Village 35100
Unified School District ⁴	[Dotted Line]	UNI 03370
Secondary School District ⁴	[Thick Line]	SEC 99965
Elementary School District ⁴	[Thin Line]	ELM 02220

DESCRIPTION	SYMBOL	DESCRIPTION	SYMBOL
Interstate	[Blue Line]	Water Body	[Blue Area]
U.S. Highway	[Black Line]	Pleasant Lake	[Blue Label]
State Highway or State Road	[Black Line]	Military	[Blue Label]
Other Road	[Thin Line]	National or State Park, Forest, or Recreation Area	[Green Label]
Railroad	[Black Line]	Inset Area	[Green Label]
Pipeline or Power Line	[Black Line]	Outside Subject Area	[Grey Label]
Ridge or Fence	[Black Line]		
Notable Boundary or Feature Not Elsewhere Classified	[Black Line]		

Where international, state, county, and/or MCD boundaries coincide, the map shows the boundary symbol for only the highest-ranking of these boundaries.

Geographic area names are followed by either their FIPS or census code.

1 MCD boundaries are shown in the following states in which some or all MCDs function as general-purpose governmental units: Connecticut, Illinois, Indiana, Kansas, Maine, Massachusetts, Michigan, Minnesota, Missouri, Nebraska, New Hampshire, New Jersey, New York, North Dakota, Ohio, Pennsylvania, Rhode Island, South Dakota, Vermont, and Wisconsin. (Note that Illinois and Nebraska have some counties covered by nongovernmental precincts and Missouri has most counties covered by nongovernmental townships.)

2 A '*' following an MCD name denotes a false MCD. A '*' following a place name indicates that a false MCD exists with the same name and FIPS code as the place; the false MCD label is not shown.

3 Place label color corresponds to the place fill color.

4 A '*' following a label indicates that the school district is in more than one county.

Due to space limitations, some areas and features such as water bodies, parks, and roads may not be labeled.

OFF-RESERVATION TRUST LAND NAMES

12900	Portia (NE)
-------	-------------

SUBJECT AREA SCHOOL DISTRICTS ON MAP SHEET

TYPE	CODE	NAME
UNI	00165	Douglas County West Community Schools
UNI	03130	Arlington Public Schools
UNI	03990	Bemington Public Schools
UNI	70110	Elkhorn Public Schools
UNI	70650	Fort Calhoun Community Schools
UNI	70710	Fremont Public Schools
UNI	71220	Greeva Public Schools
UNI	73740	Millard Public Schools
UNI	74820	Omaha Public Schools
UNI	79900	Ralston Public Schools
UNI	78650	Westside Community Schools
UNI	79080	Yutan Public Schools

All legal boundaries and names are as of January 1, 2020. The boundaries shown on this map are for Census Bureau statistical data collection and tabulation purposes only; their depiction and designation for statistical purposes does not constitute a determination of jurisdictional authority or rights of ownership or entitlement.

Geographic: Vintage: 2020 Census (reference date: January 1, 2020)
 Data Source: U.S. Census Bureau's MA/7IGIG database (TAB20)
 Map Created by Geography Division: January 14, 2021

U.S. DEPARTMENT OF COMMERCE U.S. Census Bureau

Projection: Albers Equal Area Conic
 Datum: NAD 83
 Spheroid: GRS 80
 1st Standard Parallel: 40 30 01
 2nd Standard Parallel: 42 30 05
 Central Meridian: 99 40 49
 Latitude of Projection's Origin: 40 00 00
 False Easting: 0
 False Northing: 0

The plotted map scale is 1:73,000

