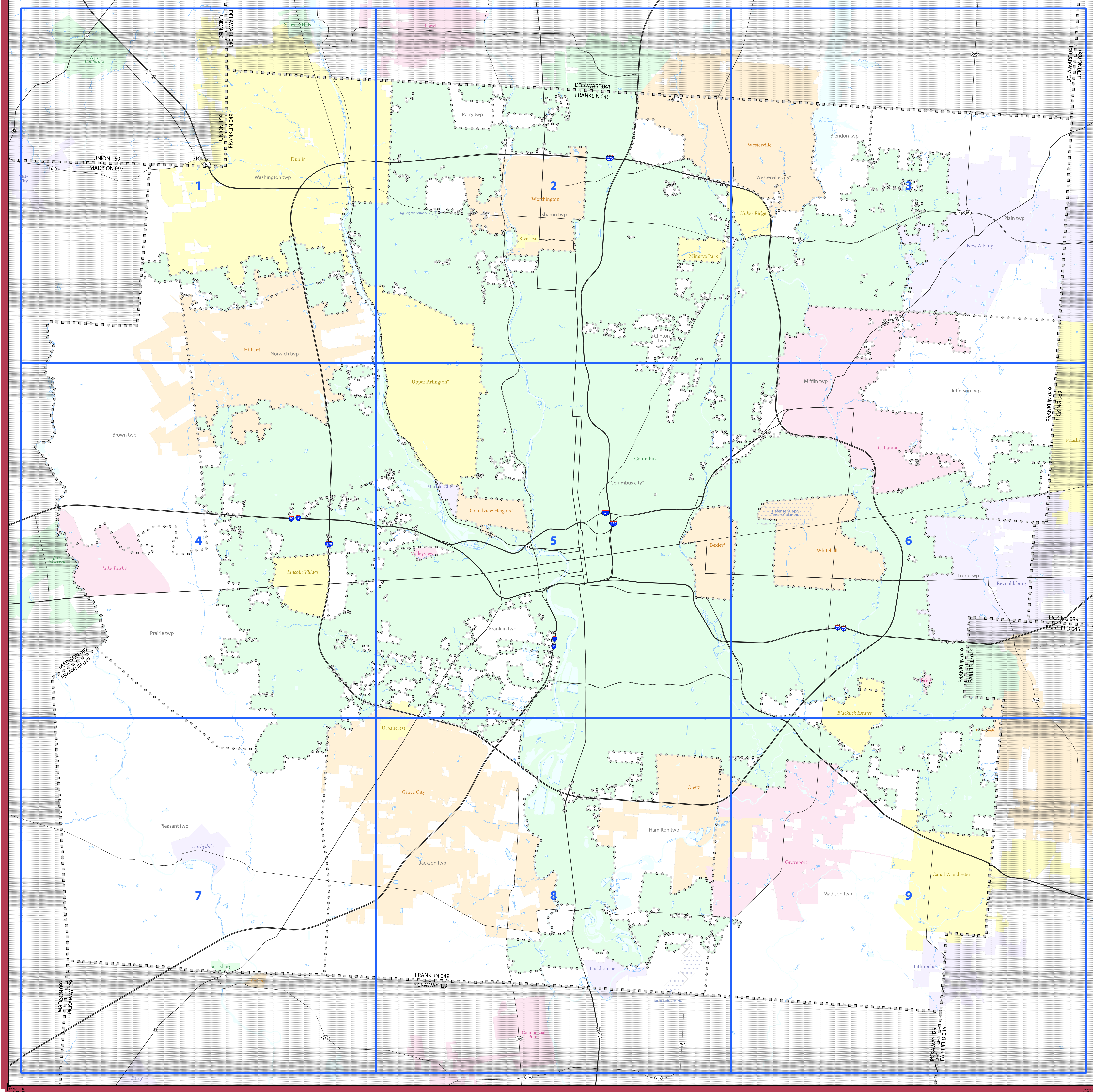


2020 CENSUS - SCHOOL DISTRICT REFERENCE MAP: Franklin County, OH



LEGEND

SYMBOL DESCRIPTION	SYMBOL	LABEL STYLE
International	☆☆☆☆☆	CANADA
Federal American Indian Reservation	L'ANSE RES 1880
Off-Reservation Trust Land	T1880
State American Indian Reservation	Tama Res 9400
Alaska Native Regional Corporation	+++++	NANA ANRC 52120
State (or statistically equivalent entity)		NEW YORK 36
County (or statistically equivalent entity)	□□□□	ERIE 029
Minor Civil Division (MCD) ^{1,2}	○ ○ ○ ○ ○	Bristol town 07485
Consolidated City	○ ○ ○ ○ ○	MILFORD 47500
Incorporated Place ³	■ ■ ■ ■ ■	Davis 18100
Census Designated Place (CDP) ³	■ ■ ■ ■ ■	Incline Village 35100
Unified School District ⁴	UNI 03370 SE 99965
Secondary School District ⁴	ELM 02220
Elementary School District ⁴	

DESCRIPTION	SYMBOL	DESCRIPTION	SYMBOL
Interstate	— 1 —	Water Body
U.S. Highway	— 2 —	Military
State Highway or State Road	— 3 —	National or State Park, Forest, or Recreation Area
Other Road	— 4 —	Yosemite NP
4WD Trail, Steepway, Alley, Walkway, or Ferry	— 5 —	Inset Area
Railroad	— 6 —	Outside Subject Area
Pipeline or Power Line	— 7 —		
Ridge or Fence	— 8 —		
Nonvisible Boundary or Feature Not Elsewhere Classified	— 9 —		

Where international, state, county, and/or MCD boundaries coincide, the map shows the boundary symbol for only the highest-ranking of these boundaries.

Geographic area names are followed by either their FIPS or census code.

1 MCD boundaries are shown in the following states in which some or all MCDs function as general-purpose governmental units: Connecticut, Illinois, Indiana, Kansas, Maine, Massachusetts, Michigan, Minnesota, Missouri, Nebraska, New Hampshire, New Jersey, New York, North Dakota, Ohio, Pennsylvania, Rhode Island, South Dakota, Vermont, and Wisconsin. (Note that Illinois and Nebraska have some counties covered by nongovernmental precincts and Missouri has most counties covered by nongovernmental townships.)

2 A " " following an MCD name denotes a false MCD. A " " following a place name indicates that a false MCD exists with the same name and FIPS code as the place; the false MCD label is not shown.

3 Place label color corresponds to the place fill color.

4 A " " following a label indicates that the school district is in more than one county.

Due to space limitations, some areas and features such as water bodies, parks, and roads may not be labeled.

Note: This index map sheet provides the map sheet configuration in relation to the subject entity. Due to scale limitations, map content may be simplified. Refer to parent and/or inset map sheets for detailed map content.

All legal boundaries and names are as of January 1, 2020. The boundaries shown on this map are for Census Bureau's statistical data collection and tabulation purposes only; their depiction and designation for statistical purposes does not constitute a determination of jurisdictional authority or rights of ownership or entitlement.

Geographic: Vintage: 2020 Census (reference date: January 1, 2020)
 Data Source: U.S. Census Bureau's MA7/TIGER database (TAB20)
 Map Created by Geography Division: January 12, 2021

U.S. DEPARTMENT OF COMMERCE U.S. Census Bureau

Projection: Albers Equal Area Conic
 Datum: NAD 83
 Spheroid: GRS 80
 1st Standard Parallel: 39 03 25
 2nd Standard Parallel: 41 40 23
 Central Meridian: -82 40 11
 Latitude of Projection's Origin: 38 24 11
 False Easting: 0
 False Northing: 0

The plotted map scale is 1:61,410

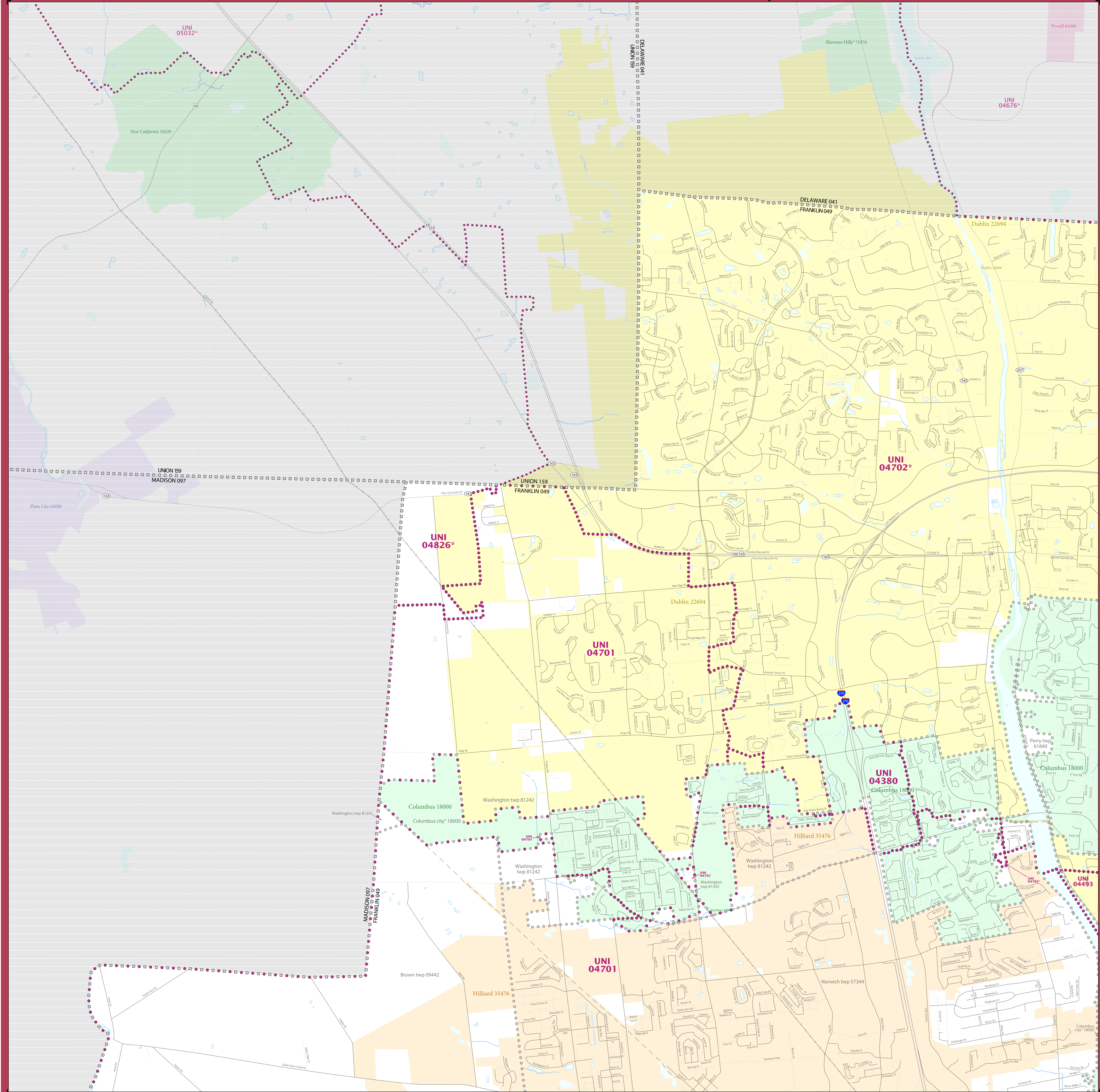
United States Census 2020

Total Sheets: 10 (Index 1; Parent 9; Inset 0)

NAME: Franklin County (049)
 ENTITY TYPE: County or statistically equivalent entity
 ST: Ohio (39)

2020 CENSUS SD REF MAP (INDEX)
 Sheet ID: 2515304000

2020 CENSUS - SCHOOL DISTRICT REFERENCE MAP: Franklin County, OH



LEGEND

SYMBOL DESCRIPTION	SYMBOL	LABEL STYLE
International	☆☆☆☆☆	CANADA
Federal American Indian Reservation	[Pattern]	L'ANSE RES 1880
Off-Reservation Trust Land	[Pattern]	T1880
State American Indian Reservation	[Pattern]	Tama Res 9400
Alaska Native Regional Corporation	+++++	NANA ANRC 52120
State (or statistically equivalent entity)		NEW YORK 36
County (or statistically equivalent entity)	□□□□□	ERIE 029
Minor Civil Division (MCD) ^{1,2}	○○○○○	Bristol town 07485
Consolidated City	○●○○○	MILFORD 47500
Incorporated Place ^{3,4}	[Color]	Davis 18100
Census Designated Place (CDP) ⁵	[Color]	Inline Village 35100
Unified School District ⁴	[Color]	UNI 03370
Secondary School District ⁴	[Color]	SEC 99965
Elementary School District ⁴	[Color]	ELM 02220

DESCRIPTION	SYMBOL	DESCRIPTION	SYMBOL
Interstate	[Symbol]	Water Body	[Symbol]
U.S. Highway	[Symbol]	Military	[Symbol]
State Highway or State Road	[Symbol]	National or State Park, Forest, or Recreation Area	[Symbol]
Other Road	[Symbol]	Yosemite NP	[Symbol]
AWD Trail, Steamer, Alley, Walkway, or Ferry	[Symbol]	Inset Area	[Symbol]
Railroad	[Symbol]	Outside Subject Area	[Symbol]
Pipeline or Power Line	[Symbol]		
Ridge or Fence	[Symbol]		
Nonlinear Boundary or Feature Not Elsewhere Classified	[Symbol]		

Where international, state, county, and/or MCD boundaries coincide, the map shows the boundary symbol for only the highest-ranking of these boundaries.

Geographic area names are followed by either their FIPS or census code.

1 MCD boundaries are shown in the following states in which some or all MCDs function as general-purpose governmental units: Connecticut, Illinois, Indiana, Kansas, Maine, Massachusetts, Michigan, Minnesota, Missouri, Nebraska, New Hampshire, New Jersey, New York, North Dakota, Ohio, Pennsylvania, Rhode Island, South Dakota, Vermont, and Wisconsin. (Note that Illinois and Nebraska have some counties covered by nongovernmental precincts and Missouri has most counties covered by nongovernmental townships.)

2 A " " following an MCD name denotes a false MCD. A " " following a place name indicates that a false MCD exists with the same name and FIPS code as the place; the false MCD label is not shown.

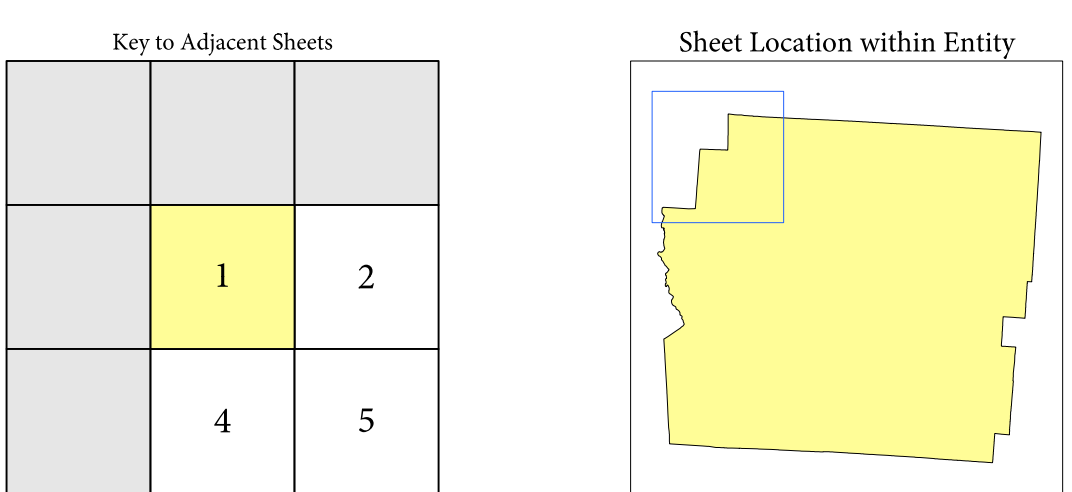
3 Place label color corresponds to the place fill color.

4 A " " following a label indicates that the school district is in more than one county.

Due to space limitations, some areas and features such as water bodies, parks, and roads may not be labeled.

SUBJECT AREA SCHOOL DISTRICTS ON MAP SHEET

TYPE	CODE	NAME
UNI	04380	Columbus City School District
UNI	04493	Upper Arlington City School District
UNI	04701	Hilliard City School District
UNI	04702	Dublin City School District
UNI	04826	Jonathan Alder Local School District



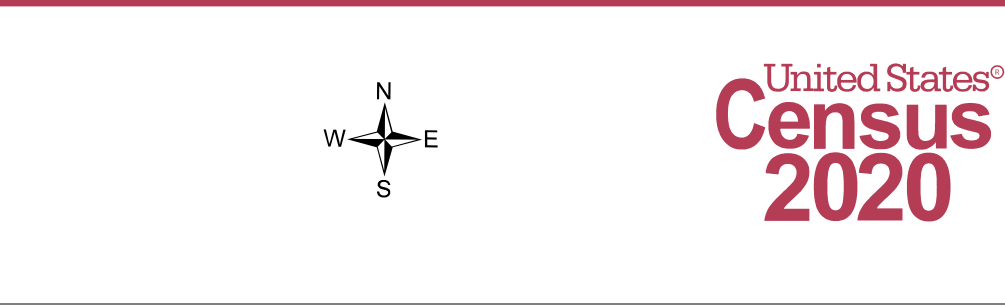
All legal boundaries and names are as of January 1, 2020. The boundaries shown on this map are for Census Bureau statistical data collection and tabulation purposes only; their depiction and designation for statistical purposes does not constitute a determination of jurisdictional authority or rights of ownership or entitlement.

Geographic: Vintage: 2020 Census (reference date: January 1, 2020)
 Data Source: U.S. Census Bureau's MA7/TIGER database (TAB20)
 Map Created by Geography Division: January 12, 2021

U.S. DEPARTMENT OF COMMERCE U.S. Census Bureau

Projection: Albers Equal Area Conic
 Datum: NAD 83
 Spheroid: GRS 80
 1st Standard Parallel: 39 03 25
 2nd Standard Parallel: 41 40 23
 Central Meridian: -82 40 11
 Latitude of Projection's Origin: 38 24 11
 False Easting: 0
 False Northing: 0

The plotted map scale is 1:200,000



2020 CENSUS - SCHOOL DISTRICT REFERENCE MAP: Franklin County, OH

SYMBOL DESCRIPTION	SYMBOL	LABEL STYLE
International	☆☆☆☆☆	CANADA
Federal American Indian Reservation	L'ANSE RES 1880
Off-Reservation Trust Land	T1880
State American Indian Reservation	Tama Res 9400
Alaska Native Regional Corporation	+++++	NANA ANRC 52120
State (or statistically equivalent entity)	//////	NEW YORK 36
County (or statistically equivalent entity)	□□□□	ERIE 029
Minor Civil Division (MCD) ^{1,2}	○○○○○	Bristol town 07485
Consolidated City	○●○○○	MILFORD 47500
Incorporated Place ³	■ ■ ■ ■	Davis 18100
Census Designated Place (CDP) ²	■ ■ ■ ■	Inline Village 35100
Unified School District ⁴	●●●●●	UNI 0370
Secondary School District ⁴	—	SEC 9965
Elementary School District ⁴	—	ELM 02220

DESCRIPTION	SYMBOL	DESCRIPTION	SYMBOL
Interstate	—	Water Body	—
U.S. Highway	—	Military	—
State Highway or State Road	—	National or State Park, Forest, or Recreation Area	—
Other Road	—	Yosemite NP	—
RWD Trail, Steamer, Alley, Walkway, or Ferry	—	Inset Area	—
Railroad	—	Outside Subject Area	—
Pipeline or Power Line	—		
Ridge or Fence	—		
Notable Boundary or Feature Not Elsewhere Classified	—		

Where international, state, county, and/or MCD boundaries coincide, the map shows the boundary symbol for only the highest-ranking of these boundaries.

Geographic area names are followed by either their FIPS or census code.

1 MCD boundaries are shown in the following states in which some or all MCDs function as general-purpose governmental units: Connecticut, Illinois, Indiana, Kansas, Maine, Massachusetts, Michigan, Minnesota, Missouri, Nebraska, New Hampshire, New Jersey, New York, North Dakota, Ohio, Pennsylvania, Rhode Island, South Dakota, Vermont, and Wisconsin. (Note that Illinois and Nebraska have some counties covered by nongovernmental precincts and Missouri has most counties covered by nongovernmental townships.)

2 A '*' following an MCD name denotes a false MCD. A '*' following a place name indicates that a false MCD exists with the same name and FIPS code as the place; the false MCD label is not shown.

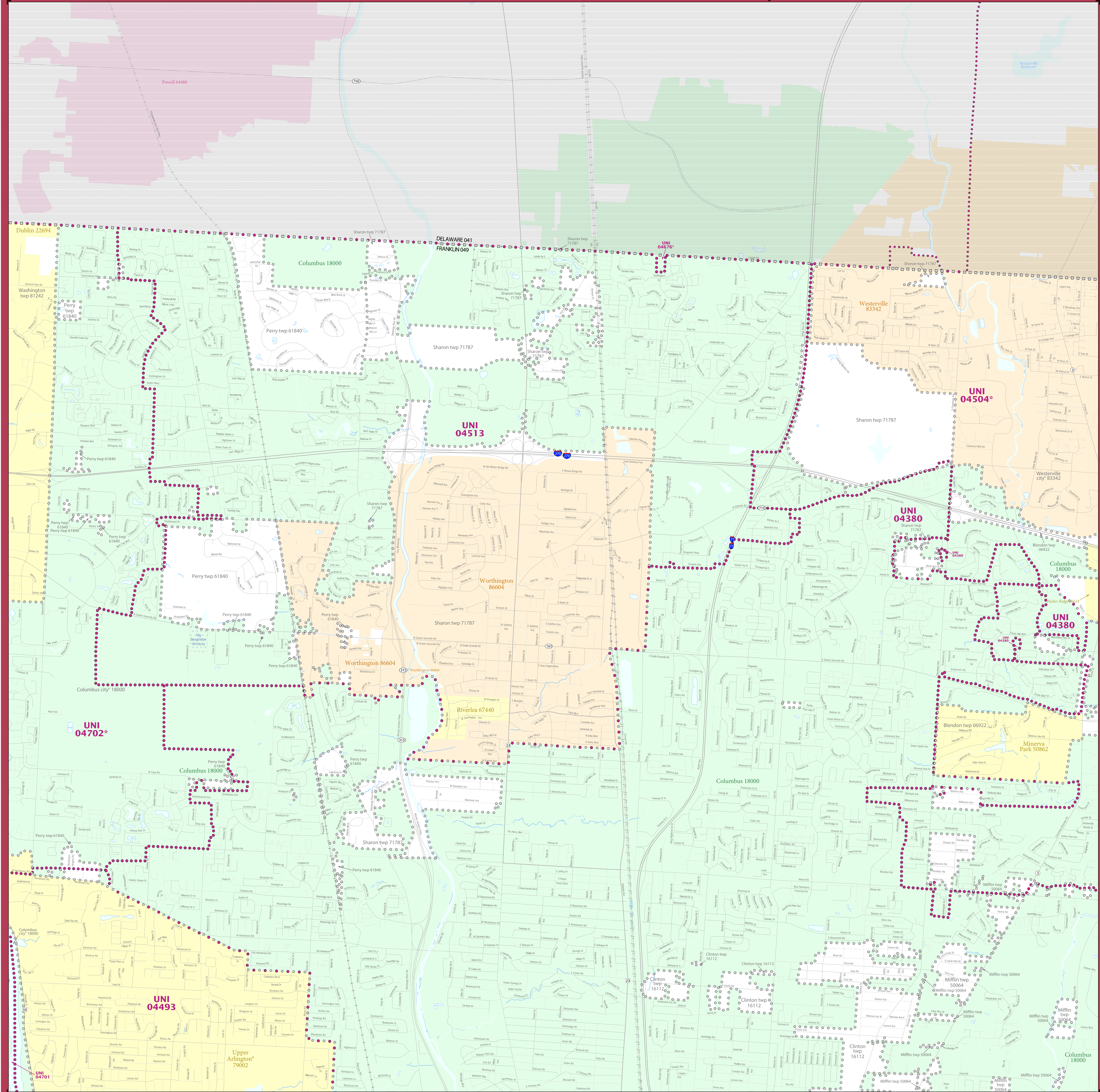
3 Place label color corresponds to the place fill color.

4 A '*' following a label indicates that the school district is in more than one county.

Due to space limitations, some areas and features such as water bodies, parks, and roads may not be labeled.

SUBJECT AREA SCHOOL DISTRICTS ON MAP SHEET

TYPE	CODE	NAME
UNI	04380	Columbus City School District
UNI	04493	Upper Arlington City School District
UNI	04504	Westerville City School District
UNI	04513	Worthington City School District
UNI	04676	Channahon Local School District
UNI	04701	Hilliard City School District
UNI	04702	Dublin City School District



Key to Adjacent Sheets			Sheet Location within Entry		
1	2	3			
4	5	6			

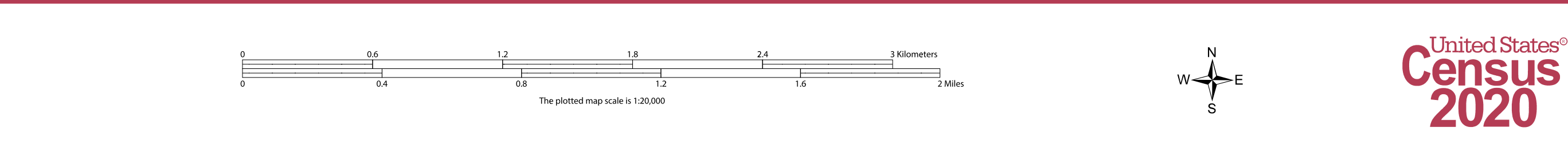
All legal boundaries and names are as of January 1, 2020. The boundaries shown on this map are for Census Bureau statistical data collection and tabulation purposes only; their depiction and designation for statistical purposes does not constitute a determination of jurisdictional authority or rights of ownership or entitlement.

Geographic: Vintage: 2020 Census (reference date: January 1, 2020)
 Data Source: U.S. Census Bureau's MA/TIGER database (TIGER20)
 Map Created by Geography Division: January 12, 2021

U.S. DEPARTMENT OF COMMERCE U.S. Census Bureau

Projection: Albers Equal Area Conic
 Datum: NAD83
 Spheroid: GRS 80
 1st Standard Parallel: 39 03 25
 2nd Standard Parallel: 41 40 23
 Central Meridian: -82 40 11
 Latitude of Projection's Origin: 38 24 11
 False Easting: 0
 False Northing: 0

The plotted map scale is 1:250,000



NAME: Franklin County (049)
 ENTITY TYPE: County or statistically equivalent entity
 ST: Ohio (39)

2020 CENSUS 50 REF MAP (PARENT)
 Sheet ID: 2515304002

2020 CENSUS - SCHOOL DISTRICT REFERENCE MAP: Franklin County, OH

SYMBOL DESCRIPTION	SYMBOL	LABEL STYLE
International	☆☆☆☆☆	CANADA
Federal American Indian Reservation	■ ■ ■ ■ ■	L'ANSE RES 1880
Off-Reservation Trust Land	■ ■ ■ ■ ■	T1880
State American Indian Reservation	■ ■ ■ ■ ■	Tama Res 9400
Alaska Native Regional Corporation	+++++	NANA ANRC 52120
State (or statistically equivalent entity)		NEW YORK 36
County (or statistically equivalent entity)	□ □ □ □ □	ERIE 029
Minor Civil Division (MCD) ^{1,2}	○ ○ ○ ○ ○	Bristol town 07485
Consolidated City	○ ○ ○ ○ ○	MILFORD 47500
Incorporated Place ^{3,4}	■ ■ ■ ■ ■	Davis 18100
Census Designated Place (CDP) ³	■ ■ ■ ■ ■	Incline Village 35100
Unified School District ⁴	● ● ● ● ●	UNI 03370
Secondary School District ⁴	— — — — —	SEC 99965
Elementary School District ⁴	— — — — —	ELM 02220

DESCRIPTION	SYMBOL	DESCRIPTION	SYMBOL
Interstate	— 4 —	Water Body	■
U.S. Highway	— 2 —	Pleasant Lake	■
State Highway or State Road	— 1 —	Military	■
Other Road	— 0 —	National or State Park, Forest, or Recreation Area	■
4WD Trail, Stairway, Alley, Walkway, or Ferry	— 3 —	Yosemite NP	■
Railroad	— 5 —	Inset Area	■
Pipeline or Power Line	— 6 —	Outside Subject Area	■
Ridge or Fence	— 7 —		
Non-labeled Boundary or Feature Not Elsewhere Classified	— 8 —		

Where international, state, county, and/or MCD boundaries coincide, the map shows the boundary symbol for only the highest-ranking of these boundaries.

Geographic area names are followed by either their FIPS or census code.

1 MCD boundaries are shown in the following states in which some or all MCDs function as general-purpose governmental units: Connecticut, Illinois, Indiana, Kansas, Maine, Massachusetts, Michigan, Minnesota, Missouri, Nebraska, New Hampshire, New Jersey, New York, North Dakota, Ohio, Pennsylvania, Rhode Island, South Dakota, Vermont, and Wisconsin. (Note that Illinois and Nebraska have some counties covered by nongovernmental precincts and Missouri has most counties covered by nongovernmental townships.)

2 A " " following an MCD name denotes a false MCD. A " " following a place name indicates that a false MCD exists with the same name and FIPS code as the place; the false MCD label is not shown.

3 Place label color corresponds to the place fill color.

4 A " " following a label indicates that the school district is in more than one county.

Due to space limitations, some areas and features such as water bodies, parks, and roads may not be labeled.

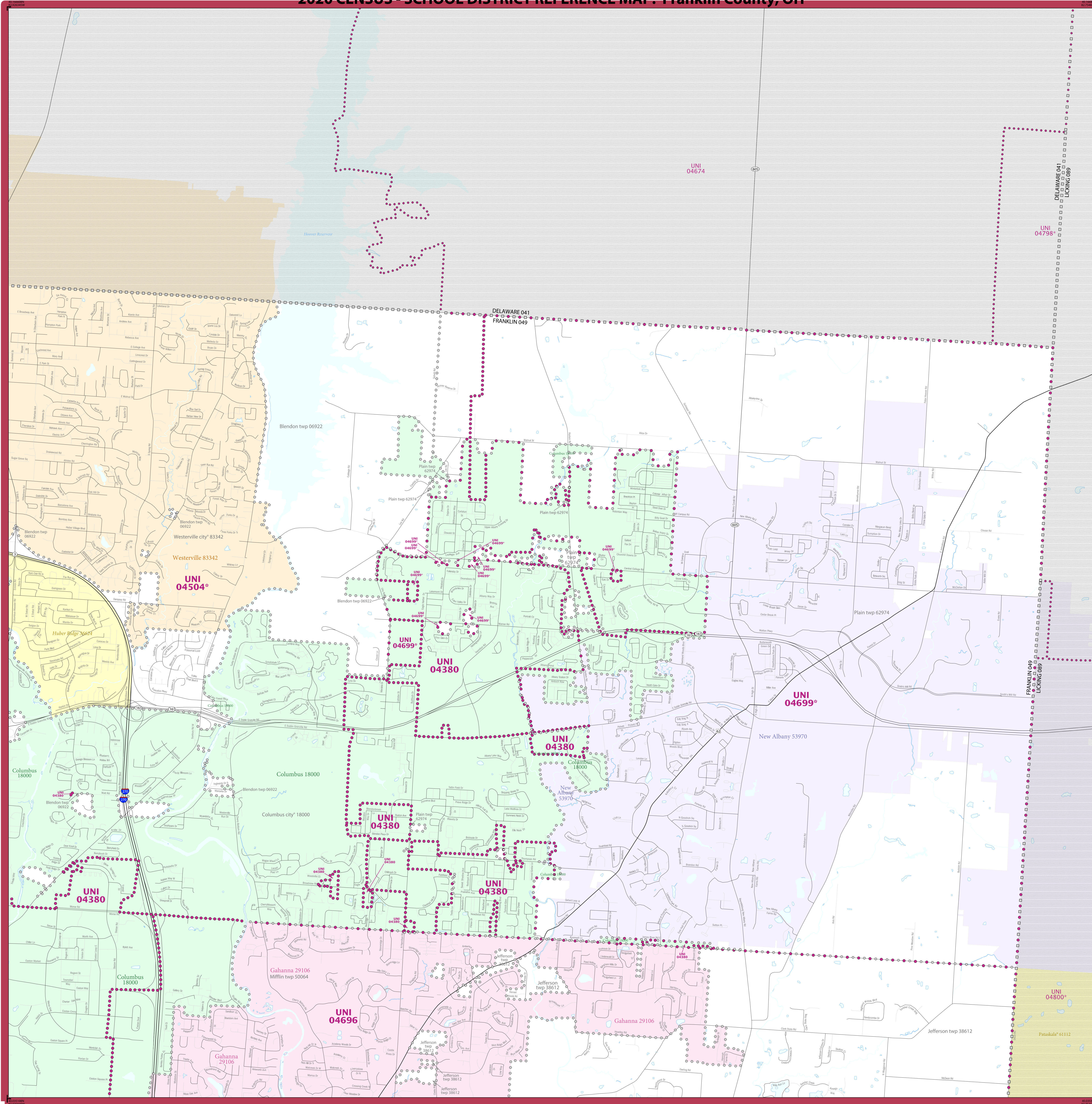
SUBJECT AREA SCHOOL DISTRICTS ON MAP SHEET
UNI 04380 Columbus City School District
UNI 04504 Westerville City School District
UNI 04696 Gahanna-Jefferson City School District
UNI 04699 New Albany-Plain Local School District

Key to Adjacent Sheets		Sheet Location within Entity
2	3	
5	6	

Sheet 3 of 9 PARENT sheets
Total Sheets: 10 (Index 1; Parent 9; Inset 0)

NAME: Franklin County (049)
ENTITY TYPE: County or statistically equivalent entity
ST: Ohio (39)

2020 CENSUS SD REF MAP (PARENT)
Sheet ID: 2515394003



All legal boundaries and names are as of January 1, 2020. The boundaries shown on this map are for Census Bureau statistical data collection and tabulation purposes only; their depiction and designation for statistical purposes does not constitute a determination of jurisdictional authority or rights of ownership or entitlement.

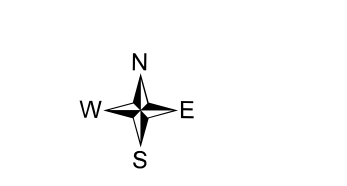
Geographic: Vintage: 2020 Census (reference date: January 1, 2020)
Data Source: U.S. Census Bureau's MA7/TIGER database (TAB20)
Map Created by Geography Division: January 12, 2021

U.S. DEPARTMENT OF COMMERCE U.S. Census Bureau

Projection: Albers Equal Area Conic
Datum: NAD 83
Spheroid: GRS 80
1st Standard Parallel: 39 03 25
2nd Standard Parallel: 41 40 23
Central Meridian: -82 40 11
Latitude of Projection's Origin: 38 24 11
False Easting: 0
False Northing: 0

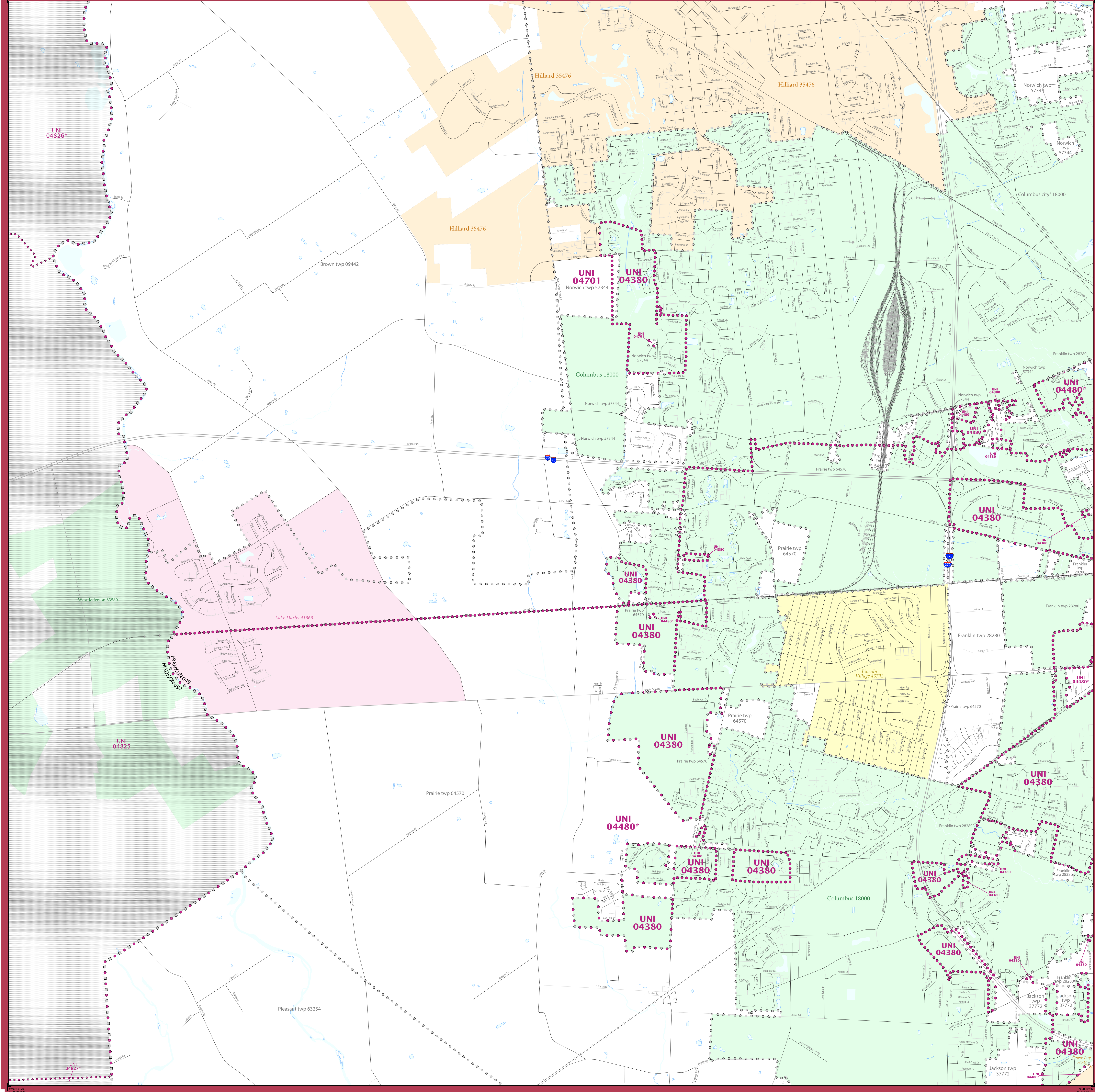
The plotted map scale is 1:200,000

0 0.6 1.2 1.8 2.4 3.0 Kilometers
0 0.4 0.8 1.2 1.6 Miles



United States
Census
2020

2020 CENSUS - SCHOOL DISTRICT REFERENCE MAP: Franklin County, OH



LEGEND

SYMBOL DESCRIPTION	SYMBOL	LABEL STYLE
International	☆☆☆☆☆	CANADA
Federal American Indian Reservation	L'ANSE RES 1880
Off-Reservation Trust Land	T1880
State American Indian Reservation	Tama Res 9400
Alaska Native Regional Corporation	+++++	NANA ANRC 52120
State (or statistically equivalent entity)	////	NEW YORK 36
County (or statistically equivalent entity)	□□□□	ERIE 029
Minor Civil Division (MCD) ^{1,2}	○○○○○	Bristol town 07485
Consolidated City	○○○○○	MILFORD 47500
Incorporated Place ^{3,4}	Davis 18100
Census Designated Place (CDP) ⁵	Inline Village 35100
Unified School District ⁴	UNI 03370
Secondary School District ⁴	SEC 99965
Elementary School District ⁴	ELM 02220

DESCRIPTION	SYMBOL	DESCRIPTION	SYMBOL
Interstate	———	Water Body
U.S. Highway	———	Natural or State Park, Forest, or Recreation Area
State Highway or State Road	———	Inset Area
Other Road	———	Outside Subject Area
4WD Trail, Steeple, Alley, Walkway, or Ferry	———		
Railroad	———		
Pipeline or Power Line	———		
Ridge or Fence	———		
Non-labeled Boundary or Feature Not Elsewhere Classified		

Where international, state, county, and/or MCD boundaries coincide, the map shows the boundary symbol for only the highest-ranking of these boundaries.
Geographic area names are followed by either their FIPS or census code.

1 MCD boundaries are shown in the following states in which some or all MCDs function as general-purpose governmental units: Connecticut, Illinois, Indiana, Kansas, Maine, Massachusetts, Michigan, Minnesota, Missouri, Nebraska, New Hampshire, New Jersey, New York, North Dakota, Ohio, Pennsylvania, Rhode Island, South Dakota, Vermont, and Wisconsin. (Note that Illinois and Nebraska have some counties covered by nongovernmental precincts and Missouri has most counties covered by nongovernmental townships.)

2 A '*' following an MCD name denotes a false MCD. A '*' following a place name indicates that a false MCD exists with the same name and FIPS code as the place; the false MCD label is not shown.

3 Place label color corresponds to the place fill color.

4 A '*' following a label indicates that the school district is in more than one county.

Due to space limitations, some areas and features such as water bodies, parks, and roads may not be labeled.

SUBJECT AREA SCHOOL DISTRICTS ON MAP SHEET

TYPE	CODE	NAME
UNI	04380	Columbus City School District
UNI	04480	South-Western City School District
UNI	04701	Hilliard City School District

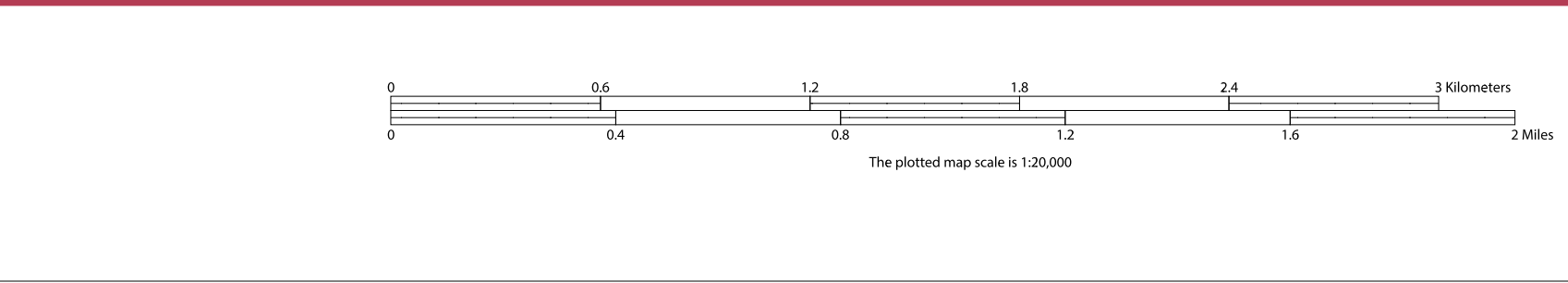
Key to Adjacent Sheets

1	2
4	5
7	8



Sheet 4 of 9 PARENT sheets
Total Sheets: 10 (Index 1; Parent 9; Inset 0)

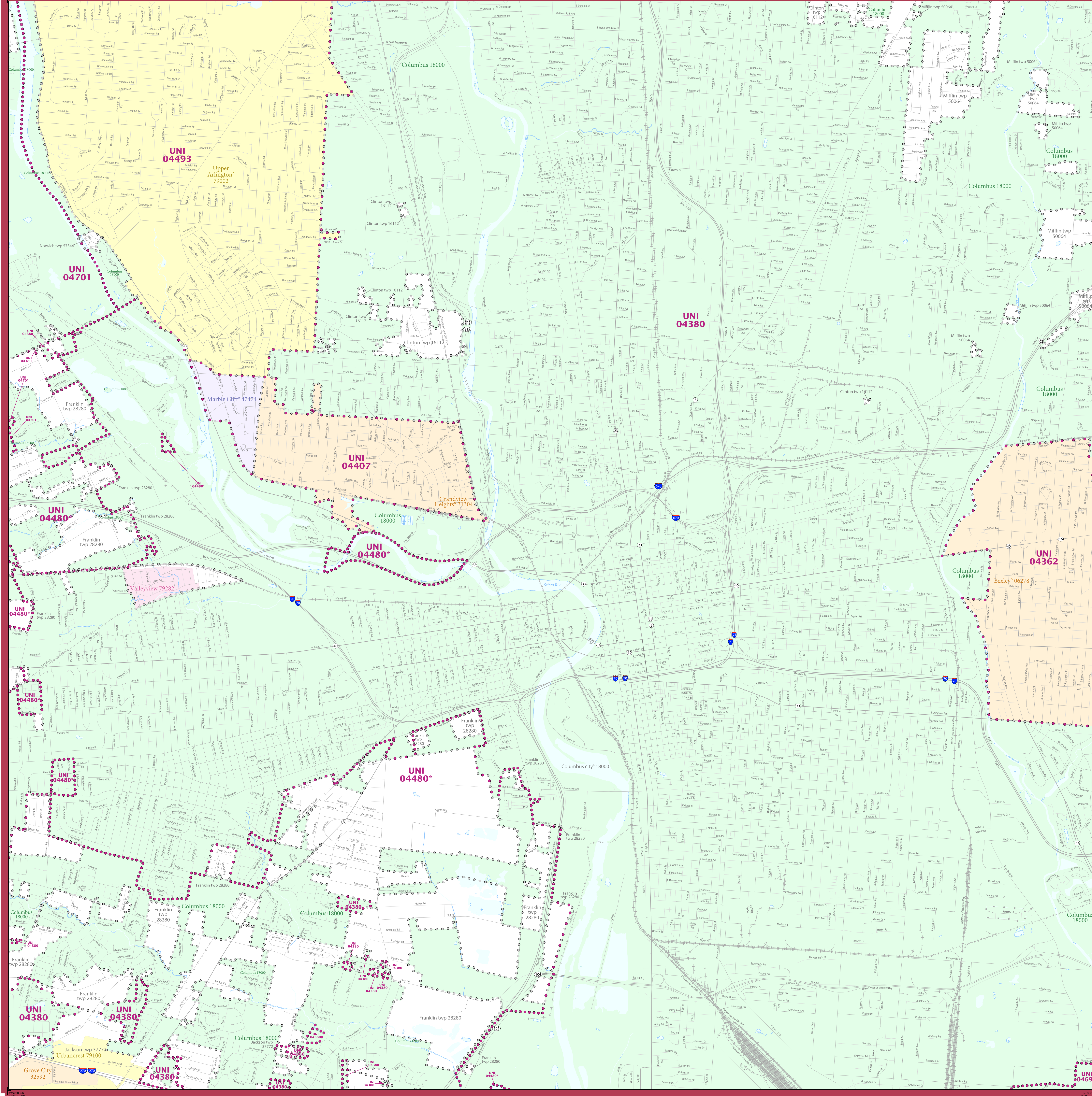
All legal boundaries and names are as of January 1, 2020. The boundaries shown on this map are for Census Bureau statistical data collection and tabulation purposes only; their depiction and designation for statistical purposes does not constitute a determination of jurisdictional authority or rights of ownership or entitlement.
Geographic: Vintage: 2020 Census (reference date: January 1, 2020)
Data Source: U.S. Census Bureau's MA7/TIGER database (TAB20)
Map Created by Geography Division: January 12, 2021
U.S. DEPARTMENT OF COMMERCE U.S. Census Bureau



NAME: Franklin County (049)
ENTITY TYPE: County or statistically equivalent entity
ST: Ohio (39)

2020 CENSUS SD REF MAP (PARENT)
Sheet ID: 2515304004

2020 CENSUS - SCHOOL DISTRICT REFERENCE MAP: Franklin County, OH



LEGEND

SYMBOL DESCRIPTION	SYMBOL	LABEL STYLE
International	☆☆☆☆☆	CANADA
Federal American Indian Reservation	L'ANSE RES 1880
Off-Reservation Trust Land	T1880
State American Indian Reservation	Tama Res 9400
Alaska Native Regional Corporation	+++++	NANA ANRC 52120
State (or statistically equivalent entity)	//////	NEW YORK 36
County (or statistically equivalent entity)	□□□□	ERIE 029
Minor Civil Division (MCD) ^{1,2}	○○○○○	Bristol town 07485
Consolidated City	○○○○○	MILFORD 47500
Incorporated Place ³	Davis 18100
Census Designated Place (CDP) ³	Incline Village 35100
Unified School District ⁴	UNI 0370
Secondary School District ⁴	SEC 99965
Elementary School District ⁴	ELM 02220

DESCRIPTION	SYMBOL	DESCRIPTION	SYMBOL
Interstate	Water Body
U.S. Highway	Military
State Highway or State Road	National or State Park, Forest, or Recreation Area
Other Road	Yosemite NP
Railroad	Inset Area
Pipeline or Power Line	Outside Subject Area
Ridge or Fence		
Notable Boundary or Feature Not Elsewhere Classified		

Where international, state, county, and/or MCD boundaries coincide, the map shows the boundary symbol for only the highest-ranking of these boundaries.

Geographic area names are followed by either their FIPS or census code.

- MCD boundaries are shown in the following states in which some or all MCDs function as general-purpose governmental units: Connecticut, Illinois, Indiana, Kansas, Maine, Massachusetts, Michigan, Minnesota, Missouri, Nebraska, New Hampshire, New Jersey, New York, North Dakota, Ohio, Pennsylvania, Rhode Island, South Dakota, Vermont, and Wisconsin. (Note that Illinois and Nebraska have some counties covered by nongovernmental precincts and Missouri has most counties covered by nongovernmental townships.)
- A "*" following an MCD name denotes a false MCD. A "*" following a place name indicates that a false MCD exists with the same name and FIPS code as the place; the false MCD label is not shown.
- Place label color corresponds to the place fill color.
- A "A" following a label indicates that the school district is in more than one county.

Due to space limitations, some areas and features such as water bodies, parks, and roads may not be labeled.

SUBJECT AREA SCHOOL DISTRICTS ON MAP SHEET

TYPE	CODE	NAME
UNI	04362	Bexley City School District
UNI	04380	Columbus City School District
UNI	04407	Grandview Heights City School District
UNI	04480	South Western City School District
UNI	04493	Upper Arlington City School District
UNI	04697	Groveport Madison Local School District
UNI	04701	Hilliard City School District

Key to Adjacent Sheets

1	2	3
4	5	6
7	8	9

Sheet Location within Entry

All legal boundaries and names are as of January 1, 2020. The boundaries shown on this map are for Census Bureau statistical data collection and tabulation purposes only; their depiction and designation for statistical purposes does not constitute a determination of jurisdictional authority or rights of ownership or entitlement.

Geographic: Vintage: 2020 Census (reference date: January 1, 2020)
 Data Source: U.S. Census Bureau's MAINTIGR database (TAB20)
 Map Created by Geography Division: January 12, 2021

U.S. DEPARTMENT OF COMMERCE U.S. Census Bureau

Projection: Albers Equal Area Conic
 Datum: NAD 83
 Spheroid: GRS 80
 1st Standard Parallel: 39 03 25
 2nd Standard Parallel: 41 40 23
 Central Meridian: -82 40 11
 Latitude of Projection's Origin: 38 24 11
 False Easting: 0
 False Northing: 0

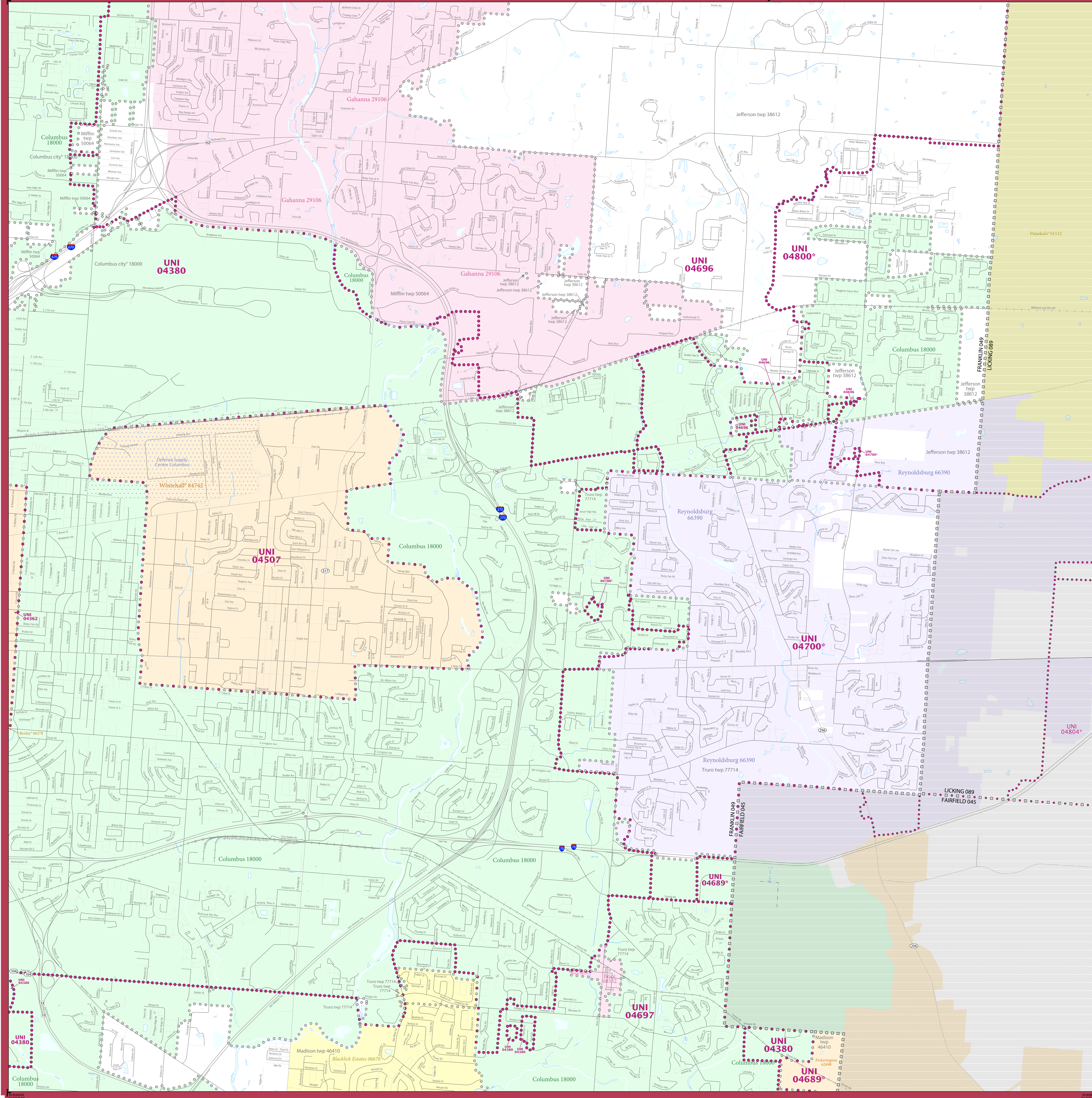
The plotted map scale is 1:200,000

Sheet 5 of 9 PARENT sheets
 Total Sheets: 10 (Index 1; Parent 9; Inset 0)

NAME: Franklin County (049)
 ENTITY TYPE: County or statistically equivalent entity
 ST: Ohio (39)

2020 CENSUS SD REF MAP (PARENT)
 Sheet ID: 2515390405

2020 CENSUS - SCHOOL DISTRICT REFERENCE MAP: Franklin County, OH



LEGEND

SYMBOL DESCRIPTION	SYMBOL	LABEL STYLE
International	☆☆☆☆☆	CANADA
Federal American Indian Reservation	[Dotted pattern]	L'ANSE RES 1880
Off-Reservation Trust Land	[Dotted pattern]	T1880
State American Indian Reservation	[Dotted pattern]	Tama Res 9400
Alaska Native Regional Corporation	+++++	NANA ANRC 52120
State (or statistically equivalent entity)		NEW YORK 36
County (or statistically equivalent entity)	□□□□□	ERIE 029
Minor Civil Division (MCD) ^{1,2}	○ ○ ○ ○ ○	Bristol town 07485
Consolidated City	○ ○ ○ ○ ○	MILFORD 47500
Incorporated Place ^{3,4}	[Color swatches]	Davis 18100
Census Designated Place (CDP) ⁵	[Color swatches]	Incline Village 35100
Unified School District ⁴	[Dotted pattern]	UNI 03370
Secondary School District ⁴	[Dotted pattern]	SEC 99965
Elementary School District ⁴	[Dotted pattern]	ELM 02220

DESCRIPTION	SYMBOL	DESCRIPTION	SYMBOL
Interstate	[Blue line]	Water Body	[Blue wavy line]
U.S. Highway	[Black line]	Military	[Black line]
State Highway or State Road	[Black line]	National or State Park, Forest, or Recreation Area	[Green area]
Other Road	[Thin black line]	Yosemite NP	[Green area]
4WD Trail, Stairway, Alley, Walkway, or Ferry	[Thin black line]	Inset Area	[Green area]
Railroad	[Black line]	Outside Subject Area	[Grey area]
Pipeline or Power Line	[Thin black line]		
Ridge or Fence	[Thin black line]		
Natural Boundary or Feature Not Elsewhere Classified	[Thin black line]		

Where international, state, county, and/or MCD boundaries coincide, the map shows the boundary symbol for only the highest-ranking of these boundaries.

Geographic area names are followed by either their FIPS or census code.

1 MCD boundaries are shown in the following states in which some or all MCDs function as general-purpose governmental units: Connecticut, Illinois, Indiana, Kansas, Maine, Massachusetts, Michigan, Minnesota, Missouri, Nebraska, New Hampshire, New Jersey, New York, North Dakota, Ohio, Pennsylvania, Rhode Island, South Dakota, Vermont, and Wisconsin. (Note that Illinois and Nebraska have some counties covered by nongovernmental precincts and Missouri has most counties covered by nongovernmental townships.)

2 A " " following an MCD name denotes a false MCD. A " " following a place name indicates that a false MCD exists with the same name and FIPS code as the place; the false MCD label is not shown.

3 Place label color corresponds to the place fill color.

4 A " " following a label indicates that the school district is in more than one county.

Due to space limitations, some areas and features such as water bodies, parks, and roads may not be labeled.

SUBJECT AREA SCHOOL DISTRICTS ON MAP SHEET

TYPE	CODE	NAME
UNI	04380	Bexley City School District
UNI	04380	Columbus City School District
UNI	04507	Whitehall City School District
UNI	04689	Pickerington Local School District
UNI	04696	Gahanna-Jefferson City School District
UNI	04697	Groveport Madison Local School District
UNI	04700	Reynoldsburg City School District
UNI	04800	Licking Heights Local School District

Key to Adjacent Sheets

2	3
5	6
8	9

Sheet Location within Entity

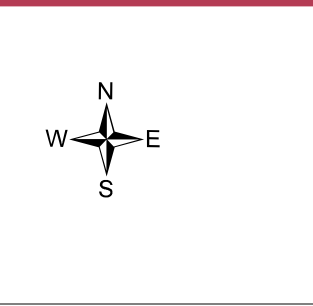
All legal boundaries and names are as of January 1, 2020. The boundaries shown on this map are for Census Bureau statistical data collection and tabulation purposes only; their depiction and designation for statistical purposes does not constitute a determination of jurisdictional authority or rights of ownership or entitlement.

Geographic Vintage: 2020 Census (reference date: January 1, 2020)
 Data Source: U.S. Census Bureau's MAINTIGER database (T4820)
 Map Created by Geography Division: January 12, 2021

U.S. DEPARTMENT OF COMMERCE U.S. Census Bureau

Projection: Albers Equal Area Conic
 Datum: NAD83
 Spheroid: GRS 80
 1st Standard Parallel: 39 03 25
 2nd Standard Parallel: 41 40 23
 Central Meridian: -82 40 11
 Latitude of Projector's Origin: 38 24 11
 False Easting: 0
 False Northing: 0

The plotted map scale is 1:200,000

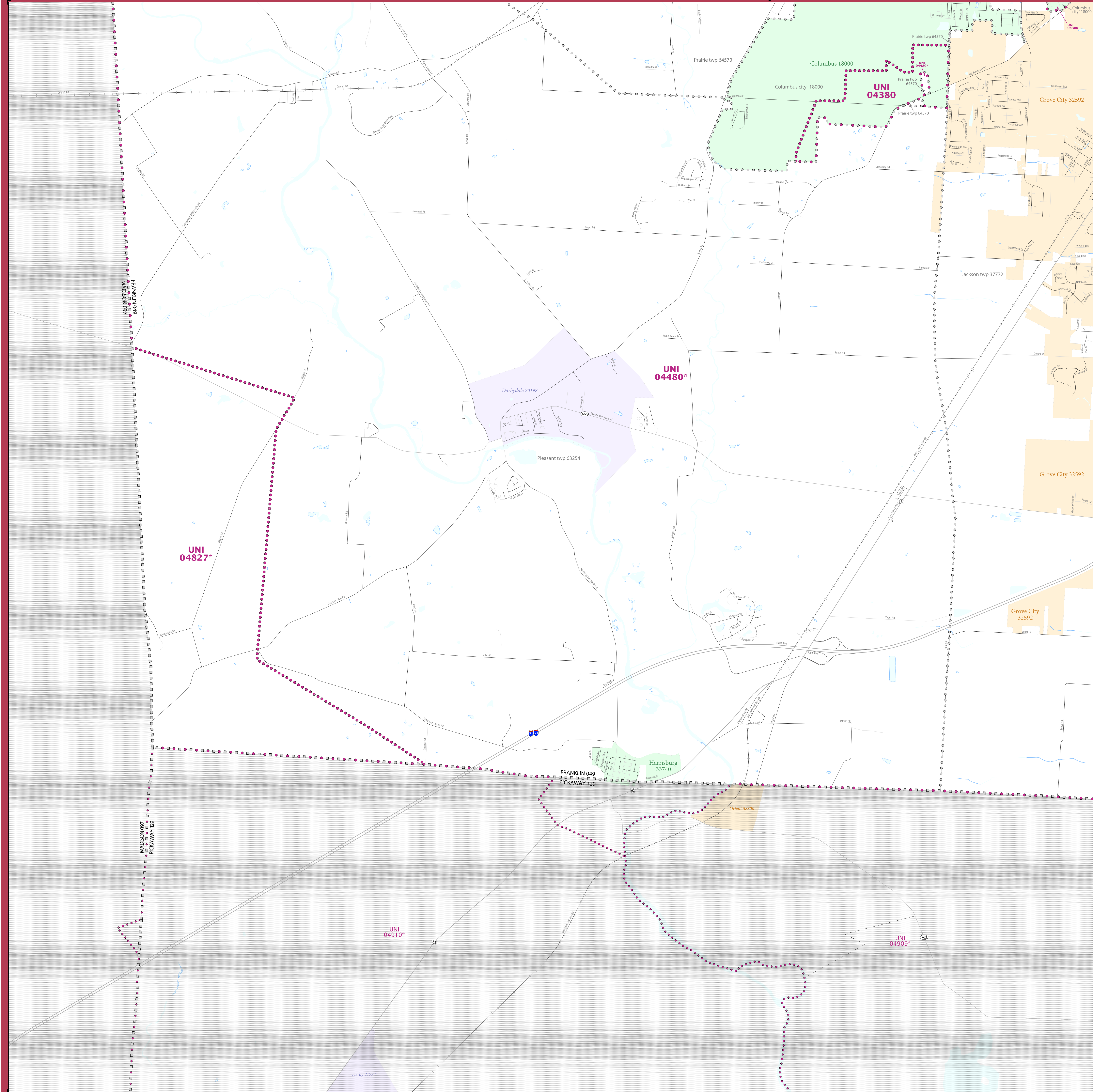


Sheet 6 of 9 PARENT sheets
 Total Sheets: 10 (Index 1; Parent 9; Inset 0)

NAME: Franklin County (049)
 ENTITY TYPE: County or statistically equivalent entity
 ST: Ohio (39)

2020 CENSUS SD REF MAP (PARENT)
 Sheet ID: 2515394006

2020 CENSUS - SCHOOL DISTRICT REFERENCE MAP: Franklin County, OH



LEGEND

SYMBOL DESCRIPTION	SYMBOL	LABEL STYLE
International	☆☆☆☆☆	CANADA
Federal American Indian Reservation	■ ■ ■ ■ ■	L'ANSE RES 1880
Off-Reservation Trust Land	■ ■ ■ ■ ■	T1880
State American Indian Reservation	■ ■ ■ ■ ■	Tama Res 9400
Alaska Native Regional Corporation	+++++	NANA ANRC 52120
State (or statistically equivalent entity)		NEW YORK 36
County (or statistically equivalent entity)	□ □ □ □ □	ERIE 029
Minor Civil Division (MCD) ^{1,2}	○ ○ ○ ○ ○	Bristol town 07485
Consolidated City	○ ○ ○ ○ ○	MILFORD 47500
Incorporated Place ^{3,3}	■ ■ ■ ■ ■	Davis 18100
Census Designated Place (CDP) ³	■ ■ ■ ■ ■	Inline Village 55100
Unified School District ⁴	● ● ● ● ●	UNI 03370 SEC 99965 ELM 02220
Secondary School District ⁴	— — — — —	
Elementary School District ⁴	— — — — —	

DESCRIPTION	SYMBOL	DESCRIPTION	SYMBOL
Interstate	— 2 —	Water Body	■
U.S. Highway	— 1 —	Port Belvoir NP	■
State Highway or State Road	— 0 —	National or State Park, Forest, or Recreation Area	■
Other Road	— — — — —	Yosemite NP	■
Other Road	— — — — —	Inset Area	■
4WD Trail, Stairway, Alley, Walkway, or Ferry	— — — — —	Outside Subject Area	■
Railroad	— + — + — + —		
Pipeline or Power Line	— — — — —		
Ridge or Fence	— — — — —		
Non-labeled Boundary or Feature Not Elsewhere Classified	— — — — —		

Where international, state, county, and/or MCD boundaries coincide, the map shows the boundary symbol for only the highest-ranking of these boundaries.

Geographic area names are followed by either their FIPS or census code.

1 MCD boundaries are shown in the following states in which some or all MCDs function as general-purpose governmental units: Connecticut, Illinois, Indiana, Kansas, Maine, Massachusetts, Michigan, Minnesota, Missouri, Nebraska, New Hampshire, New Jersey, New York, North Dakota, Ohio, Pennsylvania, Rhode Island, South Dakota, Vermont, and Wisconsin. (Note that Illinois and Nebraska have some counties covered by nongovernmental precincts and Missouri has most counties covered by nongovernmental townships.)

2 A " " following an MCD name denotes a false MCD. A " " following a place name indicates that a false MCD exists with the same name and FIPS code as the place; the false MCD label is not shown.

3 Place label color corresponds to the place fill color.

4 A " " following a label indicates that the school district is in more than one county.

Due to space limitations, some areas and features such as water bodies, parks, and roads may not be labeled.

SUBJECT AREA SCHOOL DISTRICTS ON MAP SHEET

TYPE	CODE	NAME
UNI	04380	Columbus City School District
UNI	04480	South-Western City School District
UNI	04827	Madison-Plains Local School District

Key to Adjacent Sheets

	4	5
7		8

Sheet Location within Entity

All legal boundaries and names are as of January 1, 2020. The boundaries shown on this map are for Census Bureau statistical data collection and tabulation purposes only; their depiction and designation for statistical purposes does not constitute a determination of jurisdictional authority or rights of ownership or entitlement.

Geographic Vintage: 2020 Census (reference date: January 1, 2020)
 Data Source: U.S. Census Bureau's MA7/TIGER database (TIGER20)
 Map Created by Geography Division: January 12, 2021

U.S. DEPARTMENT OF COMMERCE U.S. Census Bureau

Projection: Albers Equal Area Conic
 Datum: NAD 83
 Spheroid: GRS 80
 1st Standard Parallel: 39 03 25
 2nd Standard Parallel: 41 40 23
 Central Meridian: -82 40 11
 Latitude of Projection's Origin: 38 24 11
 False Easting: 0
 False Northing: 0

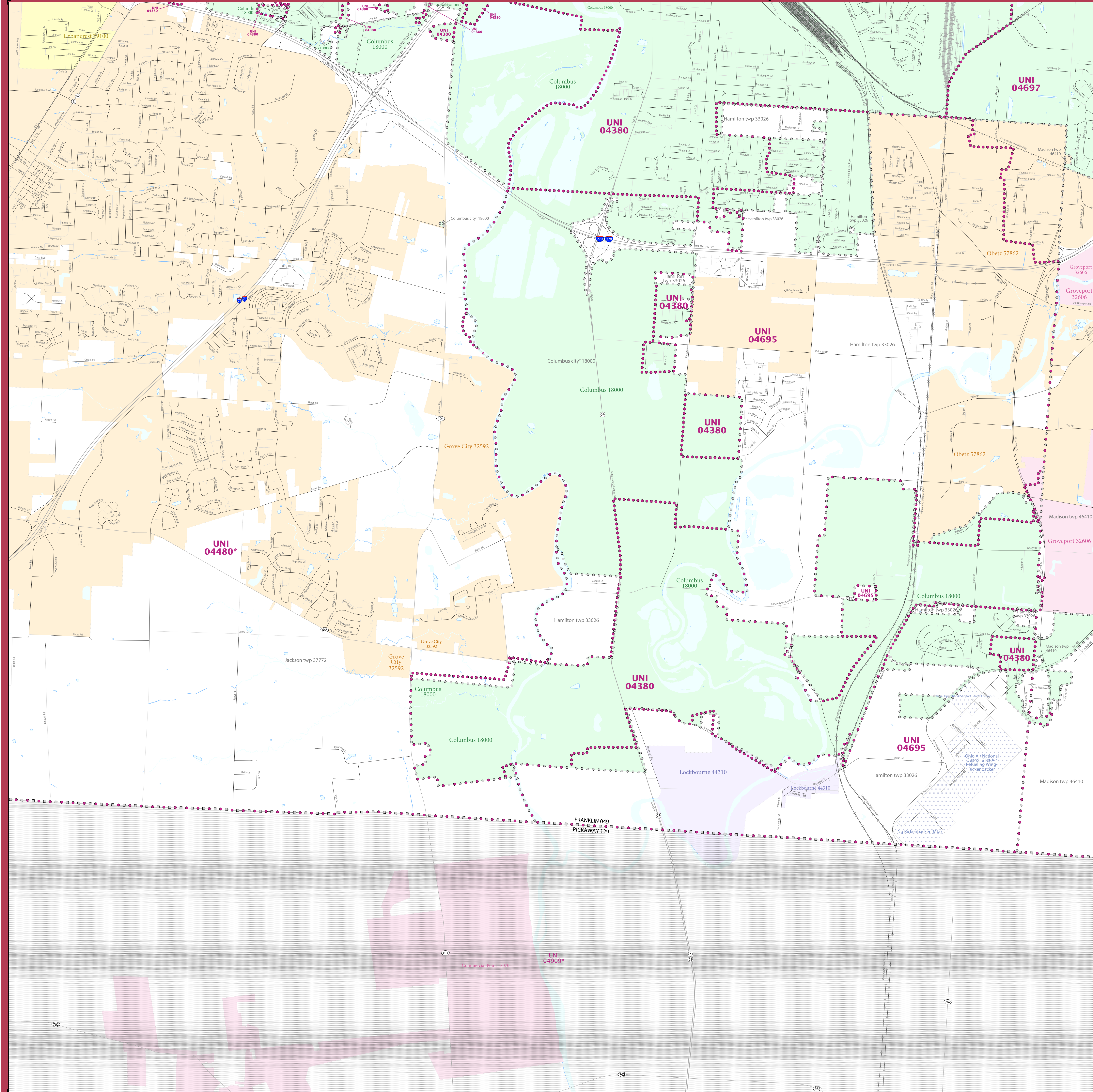
The plotted map scale is 1:200,000

Sheet 7 of 9 PARENT sheets
 Total Sheets: 10 (Index 1; Parent 9; Inset 0)

NAME: Franklin County (049)
 ENTITY TYPE: County or statistically equivalent entity
 ST: Ohio (39)

2020 CENSUS 50 REF MAP (PARENT)
 Sheet ID: 2515394007

2020 CENSUS - SCHOOL DISTRICT REFERENCE MAP: Franklin County, OH



LEGEND

SYMBOL DESCRIPTION	SYMBOL	LABEL STYLE
International	☆☆☆☆☆	CANADA
Federal American Indian Reservation	L'ANSE RES 1880
Off-Reservation Trust Land	T1880
State American Indian Reservation	Tama Res 9400
Alaska Native Regional Corporation	+++++	NANA ANRC 52120
State (or statistically equivalent entity)		NEW YORK 36
County (or statistically equivalent entity)	□□□□	ERIE 029
Minor Civil Division (MCD) ^{1,2}	○ ○ ○ ○ ○	Bristol town 07485
Consolidated City	○ ○ ○ ○ ○	MILFORD 47500
Incorporated Place ³	■ ■ ■ ■ ■	Davis 18100
Census Designated Place (CDP) ³	■ ■ ■ ■ ■	Incline Village 35100
Unified School District ⁴	UNI 03370
Secondary School District ⁴	SEC 99965
Elementary School District ⁴	ELM 02220

DESCRIPTION	SYMBOL	DESCRIPTION	SYMBOL
Interstate	—+—	Water Body
U.S. Highway	— —	Military
State Highway or State Road	—○—	National or State Park, Forest, or Recreation Area
Other Road	— —	Yosemite NP
4WD Trail, Stearway, Alley, Walkway, or Ferry	— —	Inset Area
Railroad	—+—+—+—	Outside Subject Area
Pipeline or Power Line	— —		
Ridge or Fence	— —		
Natural Boundary or Feature Not Elsewhere Classified		

Where international, state, county, and/or MCD boundaries coincide, the map shows the boundary symbol for only the highest-ranking of these boundaries.

Geographic area names are followed by either their FIPS or census code.

1 MCD boundaries are shown in the following states in which some or all MCDs function as general-purpose governmental units: Connecticut, Illinois, Indiana, Kansas, Maine, Massachusetts, Michigan, Minnesota, Missouri, Nebraska, New Hampshire, New Jersey, New York, North Dakota, Ohio, Pennsylvania, Rhode Island, South Dakota, Vermont, and Wisconsin. (Note that Illinois and Nebraska have some counties covered by nongovernmental precincts and Missouri has most counties covered by nongovernmental townships.)

2 A " " following an MCD name denotes a false MCD. A " " following a place name indicates that a false MCD exists with the same name and FIPS code as the place; the false MCD label is not shown.

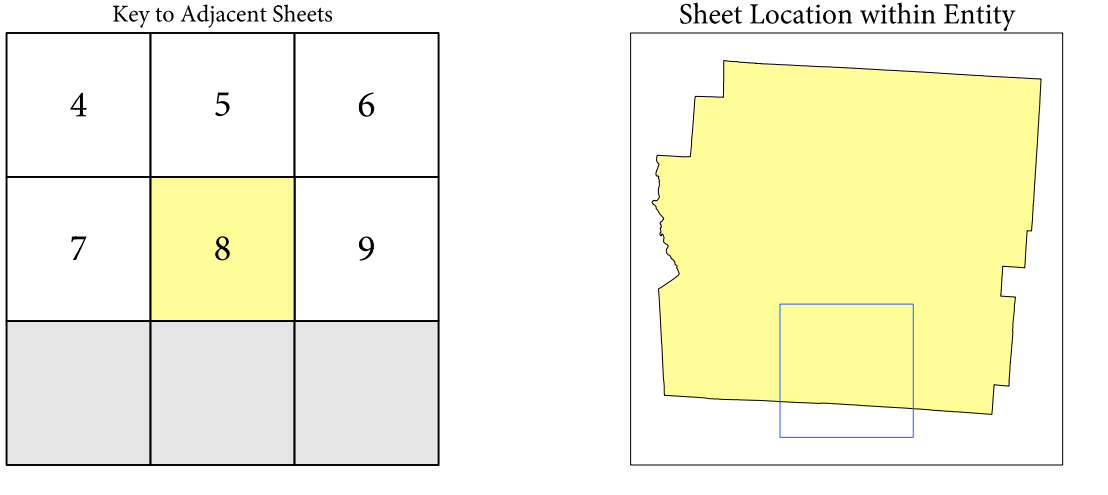
3 Place label color corresponds to the place fill color.

4 A " " following a label indicates that the school district is in more than one county.

Due to space limitations, some areas and features such as water bodies, parks, and roads may not be labeled.

SUBJECT AREA SCHOOL DISTRICTS ON MAP SHEET

TYPE	CODE	NAME
UNI	04380	Columbus City School District
UNI	04480	South-Western City School District
UNI	04695	Hamilton Local School District
UNI	04697	Groveport Madison Local School District



Sheet 8 of 9 PARENT sheets
Total Sheets: 10 (Index 1; Parent 9; Inset 0)

All legal boundaries and names are as of January 1, 2020. The boundaries shown on this map are for Census Bureau statistical data collection and tabulation purposes only; their depiction and designation for statistical purposes does not constitute a determination of jurisdictional authority or rights of ownership or entitlement.

Geographic Vintage: 2020 Census (reference date: January 1, 2020)
Data Source: U.S. Census Bureau's MA/TIGER database (TIGER20)
Map Created by Geography Division: January 12, 2021

U.S. DEPARTMENT OF COMMERCE U.S. Census Bureau

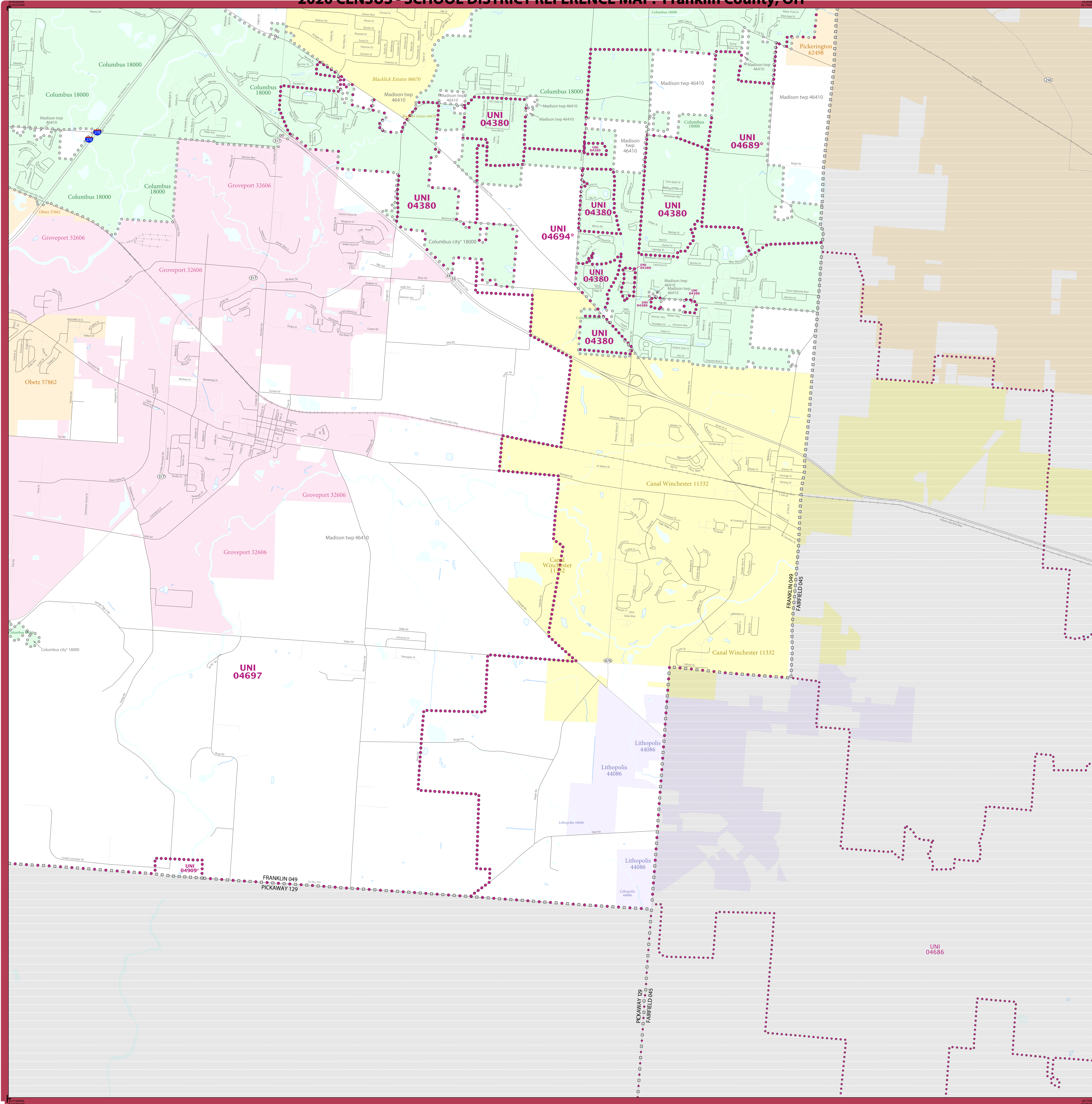
Projection: Albers Equal Area Conic
Datum: NAD 83
Spheroid: GRS 80
1st Standard Parallel: 39 03 25
2nd Standard Parallel: 41 40 23
Central Meridian: -82 40 11
Latitude of Projection's Origin: 38 24 11
False Easting: 0
False Northing: 0

The plotted map scale is 1:20,000

NAME: Franklin County (049)
ENTITY TYPE: County or statistically equivalent entity
ST: Ohio (39)

2020 CENSUS SD REF MAP (PARENT)
Sheet ID: 25153904008

2020 CENSUS - SCHOOL DISTRICT REFERENCE MAP: Franklin County, OH



LEGEND

SYMBOL DESCRIPTION	SYMBOL	LABEL STYLE
International	☆☆☆☆☆	CANADA
Federal American Indian Reservation	■■■■■■■■	L'ANSE RES 1880
Off-Reservation Trust Land	■■■■■■■■	T1880
State American Indian Reservation	■■■■■■■■	Tama Res 9400
Alaska Native Regional Corporation	+++++	NANA ANRC 52120
State (or statistically equivalent entity)	//////	NEW YORK 36
County (or statistically equivalent entity)	□□□□	ERIE 029
Minor Civil Division (MCD) ^{1,2}	○○○○	Bristol town 07485
Consolidated City	○○○○○	MILFORD 47500
Incorporated Place ^{3,3}	■■■■■	Davis 18100
Census Designated Place (CDP) ³	■■■■■	Inline Village 35100
Unified School District ⁴	■■■■■	UNI 03370
Secondary School District ⁴	■■■■■	SEC 99965
Elementary School District ⁴	■■■■■	ELM 02220

DESCRIPTION	SYMBOL	DESCRIPTION	SYMBOL
Interstate		Water Body	
U.S. Highway		Military	
State Highway or State Road		National or State Park, Forest, or Recreation Area	
Other Road		Yosemite NP	
4WD Trail, Steeplechase, Alley, Walkway, or Ferry		Inset Area	
Railroad		Outside Subject Area	
Pipeline or Power Line			
Ridge or Fence			
Navigable Boundary or Feature Not Elsewhere Classified			

Where international, state, county, and/or MCD boundaries coincide, the map shows the boundary symbol for only the highest-ranking of these boundaries.

Geographic area names are followed by either their FIPS or census code.

1 MCD boundaries are shown in the following states in which some or all MCDs function as general-purpose governmental units: Connecticut, Illinois, Indiana, Kansas, Maine, Massachusetts, Michigan, Minnesota, Missouri, Nebraska, New Hampshire, New Jersey, New York, North Dakota, Ohio, Pennsylvania, Rhode Island, South Dakota, Vermont, and Wisconsin. (Note that Illinois and Nebraska have some counties covered by nongovernmental precincts and Missouri has most counties covered by nongovernmental townships.)

2 A ' ' following an MCD name denotes a false MCD. A ' ' following a place name indicates that a false MCD exists with the same name and FIPS code as the place; the false MCD label is not shown.

3 Place label color corresponds to the place fill color.

4 A ' ' following a label indicates that the school district is in more than one county.

Due to space limitations, some areas and features such as water bodies, parks, and roads may not be labeled.

SUBJECT AREA SCHOOL DISTRICTS ON MAP SHEET

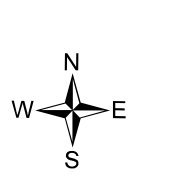
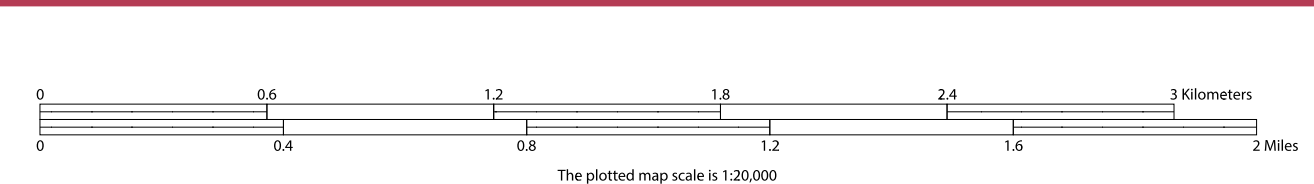
TYPE	CODE	NAME
UNI	04380	Columbus City School District
UNI	04689	Pickerington Local School District
UNI	04684	Canal Winchester Local School District
UNI	04697	Groveport Madison Local School District
UNI	04699	Troy's Valley Local School District

All legal boundaries and names are as of January 1, 2020. The boundaries shown on this map are for Census Bureau statistical data collection and tabulation purposes only; their depiction and designation for statistical purposes does not constitute a determination of jurisdictional authority or rights of ownership or entitlement.

Geographic Vintage: 2020 Census (reference date: January 1, 2020)
 Data Source: U.S. Census Bureau's MA/TIGER database (TIGER20)
 Map Created by Geography Division: January 12, 2021

U.S. DEPARTMENT OF COMMERCE U.S. Census Bureau

Projection: Albers Equal Area Conic
 Datum: NAD 83
 Spheroid: GRS 80
 1st Standard Parallel: 39 03 25
 2nd Standard Parallel: 41 40 23
 Central Meridian: -82 40 11
 Latitude of Projection's Origin: 38 24 11
 False Easting: 0
 False Northing: 0



Key to Adjacent Sheets

5	6
8	9

Sheet Location within Entity

Sheet 9 of 9 PARENT sheets
 Total Sheets: 10 (Index 1; Parent 9; Inset 0)

NAME: Franklin County (049)
 ENTITY TYPE: County or statistically equivalent entity
 ST: Ohio (39)