

2020 CENSUS - SCHOOL DISTRICT REFERENCE MAP: Beadle County, SD

SYMBOL DESCRIPTION		SYMBOL	LEGEND	
International	☆☆☆☆☆	☆☆☆☆☆	CANADA	
Federal American Indian Reservation	[Pattern]	[Pattern]	L'ANSE RES 1880	
Off-Reservation Trust Land	[Pattern]	[Pattern]	T1880	
State American Indian Reservation	[Pattern]	[Pattern]	Tama Res 9400	
Alaska Native Regional Corporation	[Pattern]	[Pattern]	NANA ANRC 52120	
State (or statistically equivalent entity)	[Pattern]	[Pattern]	NEW YORK 36	
County (or statistically equivalent entity)	[Pattern]	[Pattern]	ERIE 029	
Minor Civil Division (MCD) ^{1,2}	[Pattern]	[Pattern]	Bristol town 07485	
Consolidated City	[Pattern]	[Pattern]	MILFORD 47500	
Incorporated Place ^{3,3}	[Pattern]	[Pattern]	Davis 18100	
Census Designated Place (CDP) ²	[Pattern]	[Pattern]	Incline Village 35100	
Unified School District ⁴	[Pattern]	[Pattern]	UNI 05370	
Secondary School District ⁴	[Pattern]	[Pattern]	SEC 99965	
Elementary School District ⁴	[Pattern]	[Pattern]	ELM 02220	

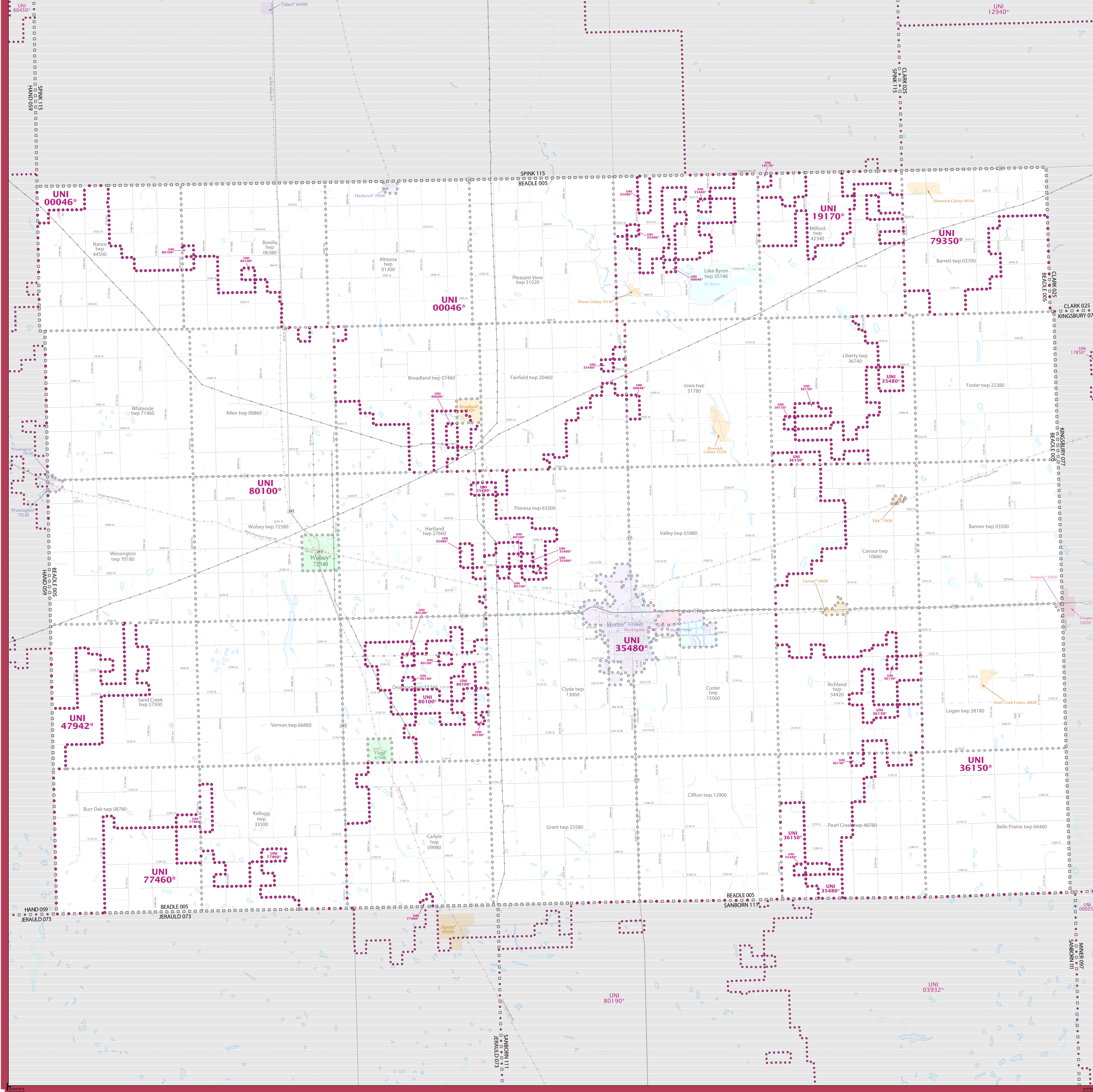
DESCRIPTION	SYMBOL	DESCRIPTION	SYMBOL
Interstate	[Symbol]	Water Body	[Symbol]
U.S. Highway	[Symbol]	Military	[Symbol]
State Highway or State Road	[Symbol]	National or State Park, Forest, or Recreation Area	[Symbol]
Other Road	[Symbol]	Inset Area	[Symbol]
AWD Trail, Stairway, Alley, Walkway, or Ferry	[Symbol]	Outside Subject Area	[Symbol]
Railroad	[Symbol]		
Pipeline or Power Line	[Symbol]		
Ridge or Fence	[Symbol]		
Notable Boundary or Feature Not Elsewhere Classified	[Symbol]		

Where international, state, county, and/or MCD boundaries coincide, the map shows the boundary symbol for only the highest-ranking of these boundaries.
 Geographic area names are followed by either their FIPS or census code.

- MCD boundaries are shown in the following states in which some or all MCDs function as general-purpose governmental units: Connecticut, Illinois, Indiana, Kansas, Maine, Massachusetts, Michigan, Minnesota, Missouri, Nebraska, New Hampshire, New Jersey, New York, North Dakota, Ohio, Pennsylvania, Rhode Island, South Dakota, Vermont, and Wisconsin. (Note that Illinois and Nebraska have some counties covered by nongovernmental precincts and Missouri has most counties covered by nongovernmental townships.)
- A " " following an MCD name denotes a false MCD. A " " following a place name indicates that a false MCD exists with the same name and FIPS code as the place; the false MCD label is not shown.
- Place label color corresponds to the place fill color.
- A " " following a label indicates that the school district is in more than one county.

Due to space limitations, some areas and features such as water bodies, parks, and roads may not be labeled.

TYPE	CODE	NAME
UNI	0006	Hickcock-Tulare School District 56-6
UNI	19170	Doland School District 56-2
UNI	35480	Huron School District 02-3
UNI	36150	Ingoquo School District 02-3
UNI	47942	Miller Area School District 29-4
UNI	77460	Wessington Springs School District 36-2
UNI	79350	Willow Lake School District 12-3
UNI	80100	Woley-Wessington School District 02-6



All legal boundaries and names are as of January 1, 2020. The boundaries shown on this map are for Census Bureau's statistical data collection and tabulation purposes only; their depiction and designation for statistical purposes does not constitute a determination of jurisdictional authority or rights of ownership or entitlement.
 Geographic: Vintage: 2020 Census reference date: January 1, 2020
 Data Source: U.S. Census Bureau's MA7/TIGER database (TIGER20)
 Map Created by Geography Division: January 14, 2021
 U.S. DEPARTMENT OF COMMERCE U.S. Census Bureau

Projection: Albers Equal Area Conic
 Datum: NAD 83
 Spheroid: GRS 80
 1st Standard Parallel: 43 03 20
 2nd Standard Parallel: 45 21 35
 Central Meridian: -100 14 55
 Latitude of Projection's Origin: 42 28 46
 False Easting: 0
 False Northing: 0

The plotted map scale is 1:99982



Sheet 1 of 1 PARENT sheets
 Total Sheets: 1 (Index 0; Parent 1; Inset 0)
 NAME: Beadle County (005)
 ENTITY TYPE: County or statistically equivalent entity
 ST: South Dakota (46)
 2020 CENSUS SD REF MAP (PARENT)
 Sheet ID: 201146000051