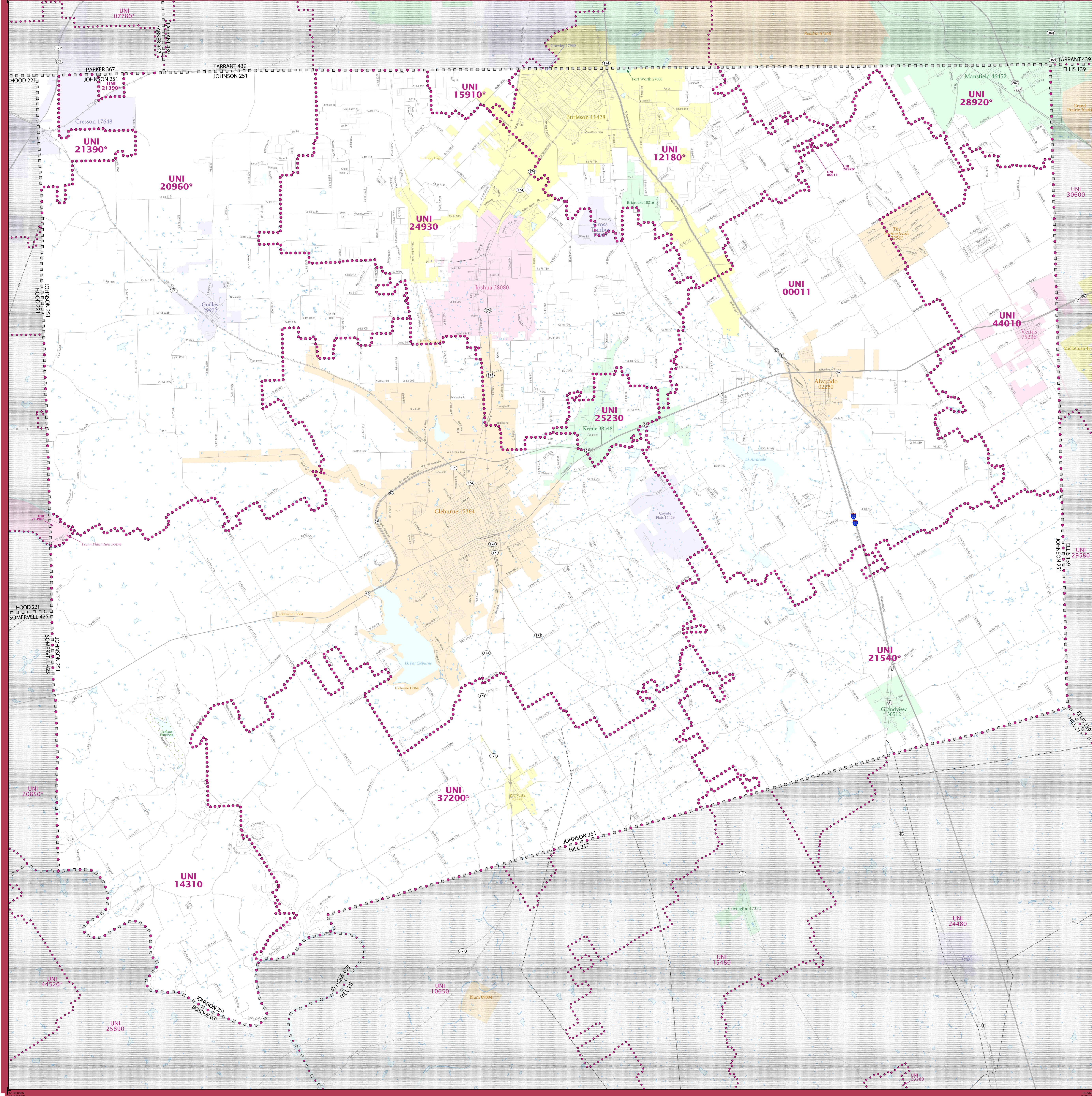


2020 CENSUS - SCHOOL DISTRICT REFERENCE MAP: Johnson County, TX



LEGEND

SYMBOL DESCRIPTION	SYMBOL	LABEL STYLE
International	☆☆☆☆☆	CANADA
Federal American Indian Reservation	[Dotted pattern]	L'ANSE RES 1880
Off-Reservation Trust Land	[Dotted pattern]	T1880
State American Indian Reservation	[Dotted pattern]	Tama Res 9400
Alaska Native Regional Corporation	+++++	NANA ANRC 52120
State (or statistically equivalent entity)	[Dotted pattern]	NEW YORK 36
County (or statistically equivalent entity)	[Dotted pattern]	ERIE 029
Minor Civil Division (MCD) ^{1,2}	○○○○○	Bristol town 07485
Consolidated City	○●○○○	MILFORD 47500
Incorporated Place ³	[Color fill]	Davis 18100
Census Designated Place (CDP) ²	[Color fill]	Incline Village 35100
Unified School District ⁴	[Color fill]	UNI 03370
Secondary School District ⁴	[Color fill]	SEC 99965
Elementary School District ⁴	[Color fill]	ELM 02220

DESCRIPTION	SYMBOL	DESCRIPTION	SYMBOL
Interstate	[Blue line with shield]	Water Body	[Blue wavy line]
U.S. Highway	[Black line with shield]	Military	[Blue line with shield]
State Highway or State Road	[Black line with shield]	National or State Park, Forest, or Recreation Area	[Green wavy line]
Other Road	[Black line]	Yosemite NP	[Green wavy line]
Railroad	[Black line with cross-ticks]	Inset Area	[Green wavy line]
Pipeline or Power Line	[Black line with cross-ticks]	Outside Subject Area	[Grey wavy line]
Ridge or Fence	[Black line with cross-ticks]		
Notable Boundary or Feature Not Elsewhere Classified	[Black line with cross-ticks]		

Where international, state, county, and/or MCD boundaries coincide, the map shows the boundary symbol for only the highest-ranking of these boundaries.

Geographic area names are followed by either their FIPS or census code.

- MCD boundaries are shown in the following states in which some or all MCDs function as general-purpose governmental units: Connecticut, Illinois, Indiana, Kansas, Maine, Massachusetts, Michigan, Minnesota, Missouri, Nebraska, New Hampshire, New Jersey, New York, North Dakota, Ohio, Pennsylvania, Rhode Island, South Dakota, Vermont, and Wisconsin. (Note that Illinois and Nebraska have some counties covered by nongovernmental precincts and Missouri has most counties covered by nongovernmental townships.)
- A " " following an MCD name denotes a false MCD. A " " following a place name indicates that a false MCD exists with the same name and FIPS code as the place; the false MCD label is not shown.
- Place label color corresponds to the place fill color.
- A " " following a label indicates that the school district is in more than one county.

Due to space limitations, some areas and features such as water bodies, parks, and roads may not be labeled.

SUBJECT AREA SCHOOL DISTRICTS ON MAP SHEET

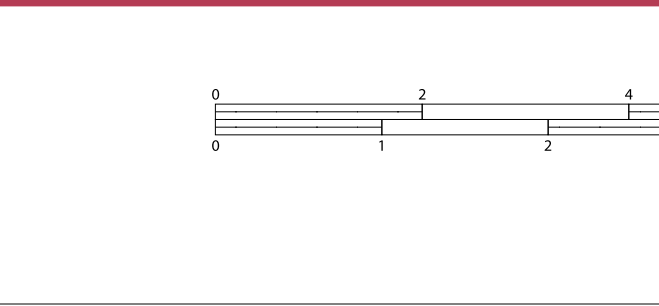
TYPE	CODE	NAME
UNI	00011	Alvarado Independent School District
UNI	12180	Burleson Independent School District
UNI	14310	Cleburne Independent School District
UNI	19910	Crowley Independent School District
UNI	20960	Godley Independent School District
UNI	21390	Granbury Independent School District
UNI	21540	Grandview Independent School District
UNI	24930	Joshua Independent School District
UNI	25230	Keene Independent School District
UNI	28920	Mansfield Independent School District
UNI	37200	Rio Vista Independent School District
UNI	44010	Venus Independent School District

All legal boundaries and names are as of January 1, 2020. The boundaries shown on this map are for Census Bureau statistical data collection and tabulation purposes only; their depiction and designation for statistical purposes does not constitute a determination of jurisdictional authority or rights of ownership or entitlement.

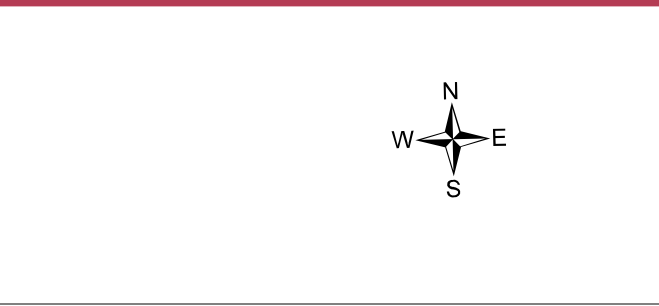
Geographic: Vintage: 2020 Census (reference date: January 1, 2020)
 Data Source: U.S. Census Bureau's MAINTIGR database (T4820)
 Map Created by Geography Division: December 22, 2020

U.S. DEPARTMENT OF COMMERCE U.S. Census Bureau

Projection: Albers Equal Area Conic
 Datum: NAD 83
 Spheroid: GRS 80
 1st Standard Parallel: 27 36 51
 2nd Standard Parallel: 34 43 24
 Central Meridian: -100 04 35
 Latitude of Projection's Origin: 25 50 13
 False Easting: 0
 False Northing: 0



The plotted map scale is 1:73,140



Sheet 1 of 1 PARENT sheets
 Total Sheets: 1 (Index 0; Parent 1; Inset 0)

NAME: Johnson County (251)
 ENTITY TYPE: County or statistically equivalent entity
 ST: Texas (48)

2020 CENSUS SD REF MAP (PARENT)
 Sheet ID: 2514823101