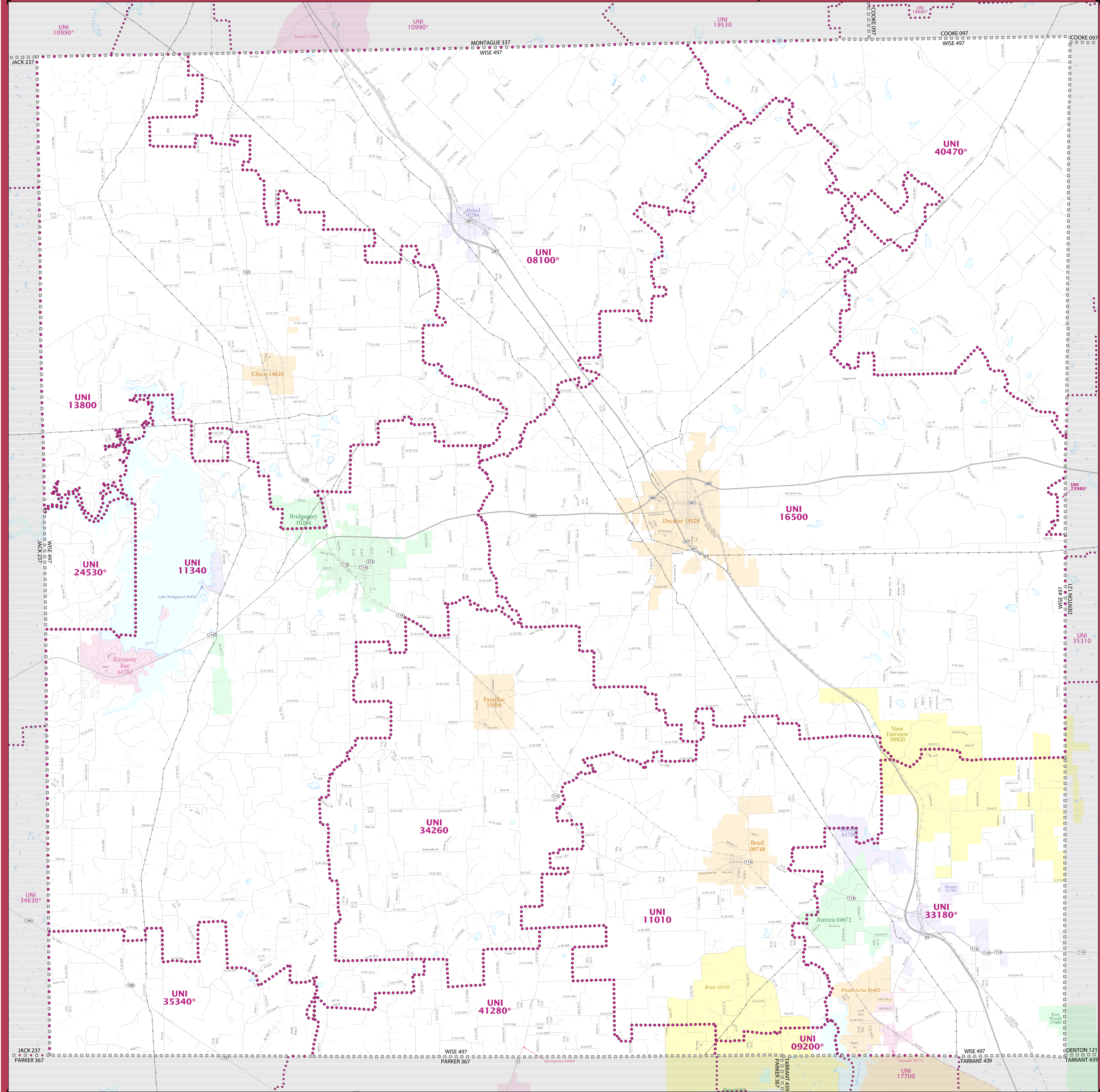


2020 CENSUS - SCHOOL DISTRICT REFERENCE MAP: Wise County, TX



LEGEND

SYMBOL DESCRIPTION	SYMBOL	LABEL STYLE
International	☆☆☆☆☆	CANADA
Federal American Indian Reservation	L'ANSE RES 1880
Off-Reservation Trust Land	T1880
State American Indian Reservation	Tama Res 9400
Alaska Native Regional Corporation	+++++	NANA ANRC 52120
State (or statistically equivalent entity)	//////	NEW YORK 36
County (or statistically equivalent entity)	□□□□	ERIE 029
Minor Civil Division (MCD) ^{1,2}	○○○○	Bristol town 07485
Consolidated City	○○○○○	MILFORD 47500
Incorporated Place ^{3,4}	Davis 18100
Census Designated Place (CDP) ⁵	Inline Village 35100
Unified School District ⁴	UNI 0330
Secondary School District ⁴	SEC 9965
Elementary School District ⁴	ELM 0220

DESCRIPTION	SYMBOL	DESCRIPTION	SYMBOL
Interstate	Water Body
U.S. Highway	Military
State Highway or State Road	National or State Park, Forest, or Recreation Area
Other Road	Yosemite NP
4WD Trail, Steepway, Alley, Walkway, or Ferry	Inset Area
Railroad	Outside Subject Area
Pipeline or Power Line		
Ridge or Fence		
Natural Boundary or Feature Not Elsewhere Classified		

Where international, state, county, and/or MCD boundaries coincide, the map shows the boundary symbol for only the highest-ranking of these boundaries.

Geographic area names are followed by either their FIPS or census code.

1 MCD boundaries are shown in the following states in which some or all MCDs function as general-purpose governmental units: Connecticut, Illinois, Indiana, Kansas, Maine, Massachusetts, Michigan, Minnesota, Missouri, Nebraska, New Hampshire, New Jersey, New York, North Dakota, Ohio, Pennsylvania, Rhode Island, South Dakota, Vermont, and Wisconsin. (Note that Illinois and Nebraska have some counties covered by nongovernmental precincts and Missouri has most counties covered by nongovernmental townships.)

2 A " " following an MCD name denotes a false MCD. A " " following a place name indicates that a false MCD exists with the same name and FIPS code as the place; the false MCD label is not shown.

3 Place label color corresponds to the place fill color.

4 A " " following a label indicates that the school district is in more than one county.

Due to space limitations, some areas and features such as water bodies, parks, and roads may not be labeled.

SUBJECT AREA SCHOOL DISTRICTS ON MAP SHEET

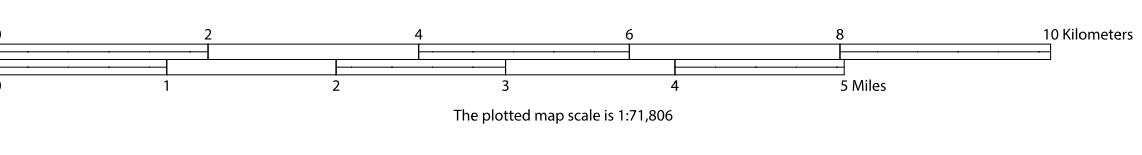
TYPE	CODE	NAME
UNI	08100	Alford Independent School District
UNI	09200	Able Independent School District
UNI	11010	Boyd Independent School District
UNI	11340	Bridgeport Independent School District
UNI	13800	Chico Independent School District
UNI	16500	Decatur Independent School District
UNI	24530	Jackson Independent School District
UNI	25980	Krum Independent School District
UNI	31180	Northwest Independent School District
UNI	34260	Paradise Independent School District
UNI	35340	Poskitt Independent School District
UNI	40470	Slidell Independent School District
UNI	41280	Springtown Independent School District

All legal boundaries and names are as of January 1, 2020. The boundaries shown on this map are for Census Bureau statistical data collection and tabulation purposes only; their depiction and designation for statistical purposes does not constitute a determination of jurisdictional authority or rights of ownership or entitlement.

Geographic Vintage: 2020 Census (reference date: January 1, 2020)
 Data Source: U.S. Census Bureau's MAINTIGR database (TIGER2020)
 Map Created by Geography Division: December 22, 2020

U.S. DEPARTMENT OF COMMERCE U.S. Census Bureau

Projection: Albers Equal Area Conic
 Datum: NAD83
 Spheroid: GRS 80
 1st Standard Parallel: 27 36 51
 2nd Standard Parallel: 34 43 24
 Central Meridian: -100 04 35
 Latitude of Projection's Origin: 25 50 13
 False Easting: 0
 False Northing: 0



Sheet 1 of 1 PARENT sheets
 Total Sheets: 1 (Index 0; Parent 1; Inset 0)

NAME: Wise County (497)
 ENTITY TYPE: County or statistically equivalent entity
 ST: Texas (48)

2020 CENSUS 50 REF MAP (PARENT)
 Sheet ID: 20154849701