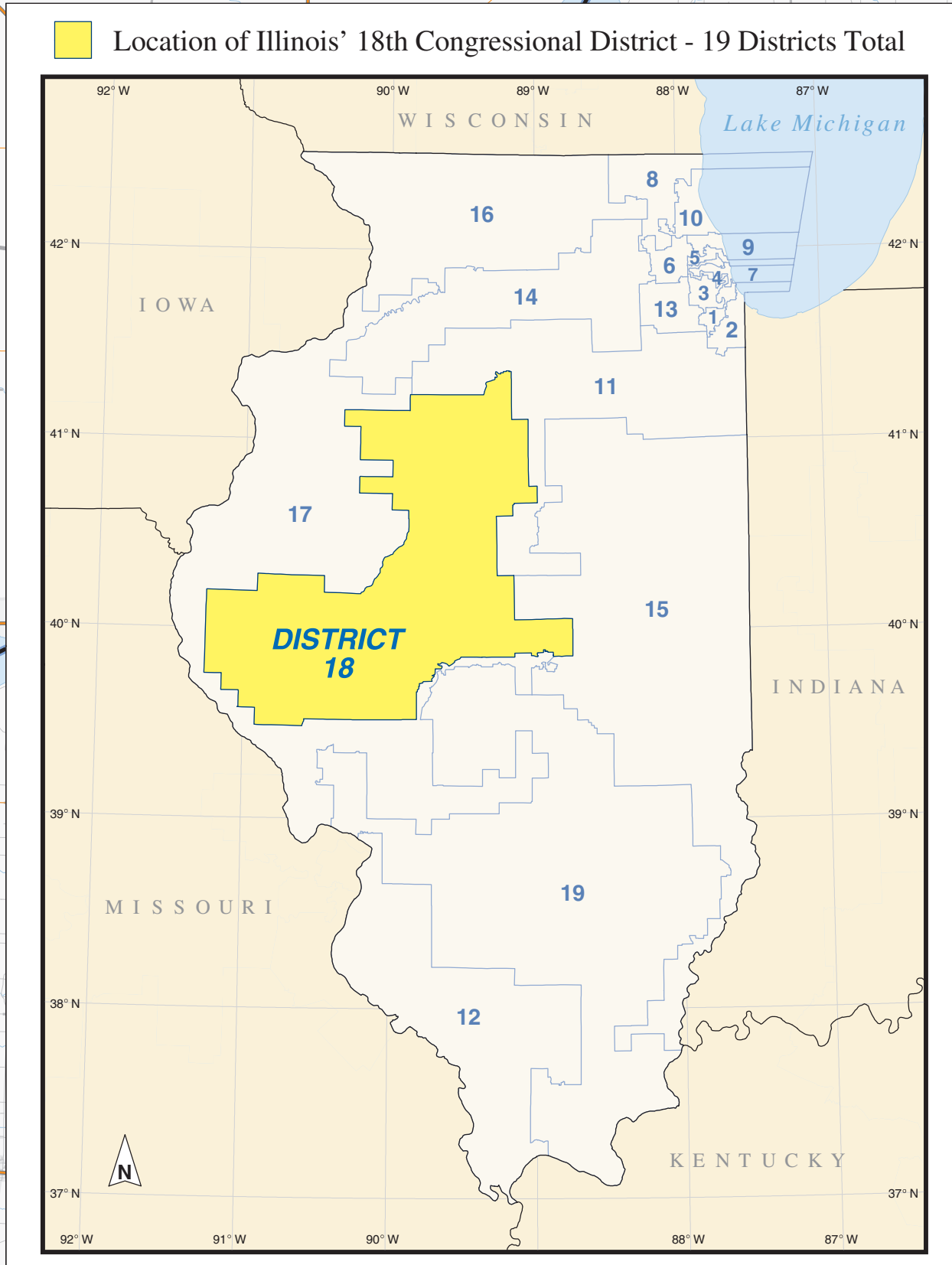
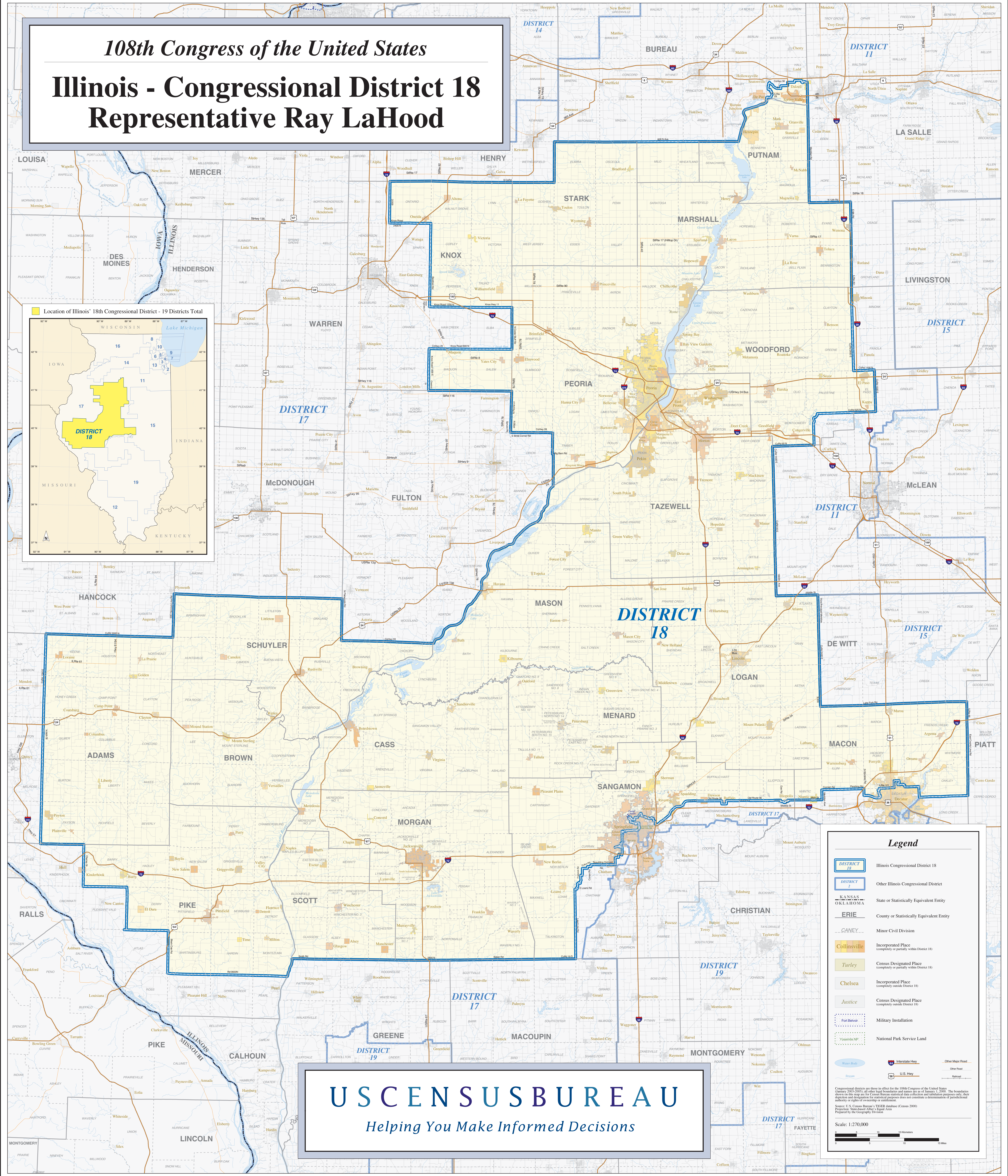


108th Congress of the United States

Illinois - Congressional District 18

Representative Ray LaHood



Legend

- DISTRICT 18** (Blue outline): Illinois Congressional District 18
- DISTRICT 2** (Blue outline): Other Illinois Congressional District
- KANSAS OKLAHOMA** (Blue outline): State or Statistically Equivalent Entity
- ERIE** (Blue outline): County or Statistically Equivalent Entity
- CANEY** (Blue outline): Minor Civil Division
- Collinsville** (Orange square): Incorporated Place (completely or partially within District 18)
- Turley** (Yellow square): Census Designated Place (completely or partially within District 18)
- Chelsea** (Green square): Incorporated Place (completely outside District 18)
- Justice** (Grey square): Census Designated Place (completely outside District 18)
- Fort Belvoir** (Blue dashed outline): Military Installation
- Yosemite NP** (Green dashed outline): National Park Service Land

Scale: 1:270,000

0 5 10 15 Miles
0 5 10 15 Kilometers

Water Body Interstate Hwy U.S. Hwy Other Major Road Other Road Railroad

Congressional districts are those in effect for the 108th Congress of the United States (January 2003-2005); all other legal boundaries and names are as of January 1, 2000. The boundaries shown on this map are for Census Bureau statistical data collection and tabulating purposes only; their authority or rights of ownership or jurisdiction are not shown. Source: U.S. Census Bureau's TIGER database (Census 2000) Prepared by the Geography Division

USCENSUSBUREAU
Helping You Make Informed Decisions